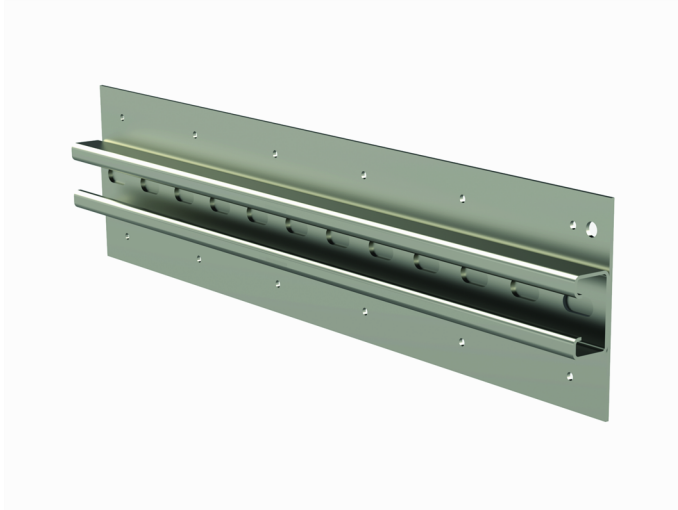


Wall mounting rail AS WALL L=1980 HDG

Mounting rails AS WALL are used for fastening cable ladders and -trays to wall by using VK-type supports. Support plates allow load distribution to a larger area on the wall that enable mounting to wood or other lightweight material walls.



Product name	AS WALL L=1980 HDG		
SKU	1449208		
Material	Steel		
Corrosivity category	C1-C4		
Color	Grey		
Sales unit	PCE		
Packing size	1 PCE / 2 MTR		
Dimensions (mm) Width Height Length	128	29	1980
Weight (kg/pce)	8,94		
GTIN	6438377019877		
Surface finish	Hot-dip galvanized after manufacturing in accordance with standard EN ISO 1461		

Dimension L (mm)	1980
------------------	------

