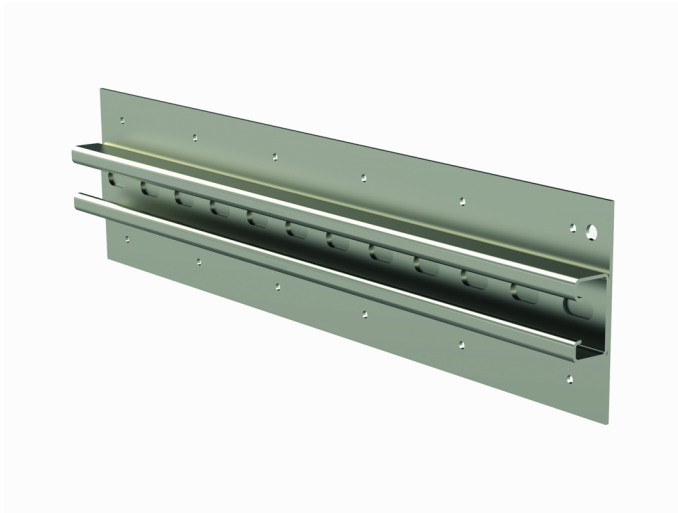


# Wall mounting rail HST AS WALL L=1980

Mounting rails AS WALL are used for fastening cable ladders and -trays to wall by using VK-type supports. Support plates allow load distribution to a larger area on the wall that enable mounting to wood or other lightweight material walls.



Product name	HST AS WALL L=1980		
SKU	1430409		
Material	Acid-proof steel		
Corrosivity category	C1-CX		
Color	Grey		
Sales unit	PCE		
Packing size	1 PCE / 2 MTR		
Dimensions (mm) Width   Height   Length	128	29	1980
Weight (kg/pce)	8,94		
GTIN	6438377005764		
Surface finish	Manufactured of stainless steel in accordance with standard EN 10088		

Dimension L (mm)	1980
------------------	------

