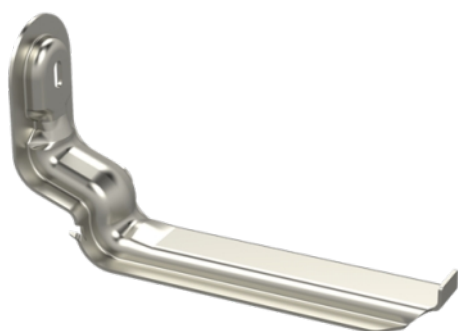


Wall support RVK-400 PG

Wall supports RVK are used for mounting 40 mm height KR-type cable trays to wall, mounting rails AS, ceiling supports HK1, HK2 and TP2 from the inner side of the cable trays. Supports RVK are placed inside of cable trays that allows a good-looking installation at places where the design is important.



Product name	RVK-400 PG		
SKU	1431534		
Material	Steel		
Corrosivity category	C1-C2		
Color	Grey		
Sales unit	PCE		
Packing size	10 PCE		
Dimensions (mm) Width Height Length	442	182	85
Weight (kg/pce)	1,28		
GTIN	6438377011017		
Surface finish	Manufactured of hot-dip galvanized steel in accordance with standard EN 10346		

Dimension L (mm)	395
Loading capacity (kg)	56

