

A Virtual Peritoneal Dialysis Clinic Pilot to Advance Patient Care

Margarita Kunin¹, Shoshi Segal¹, Luda Dumanov¹, Tomer Levi, Talia Godis², Aviram Buganim², Galia Barkai², Pazit Beckerman¹

Institute of Nephrology and Hypertension¹, Sheba Beyond², Sheba Medical Center, IL

Background

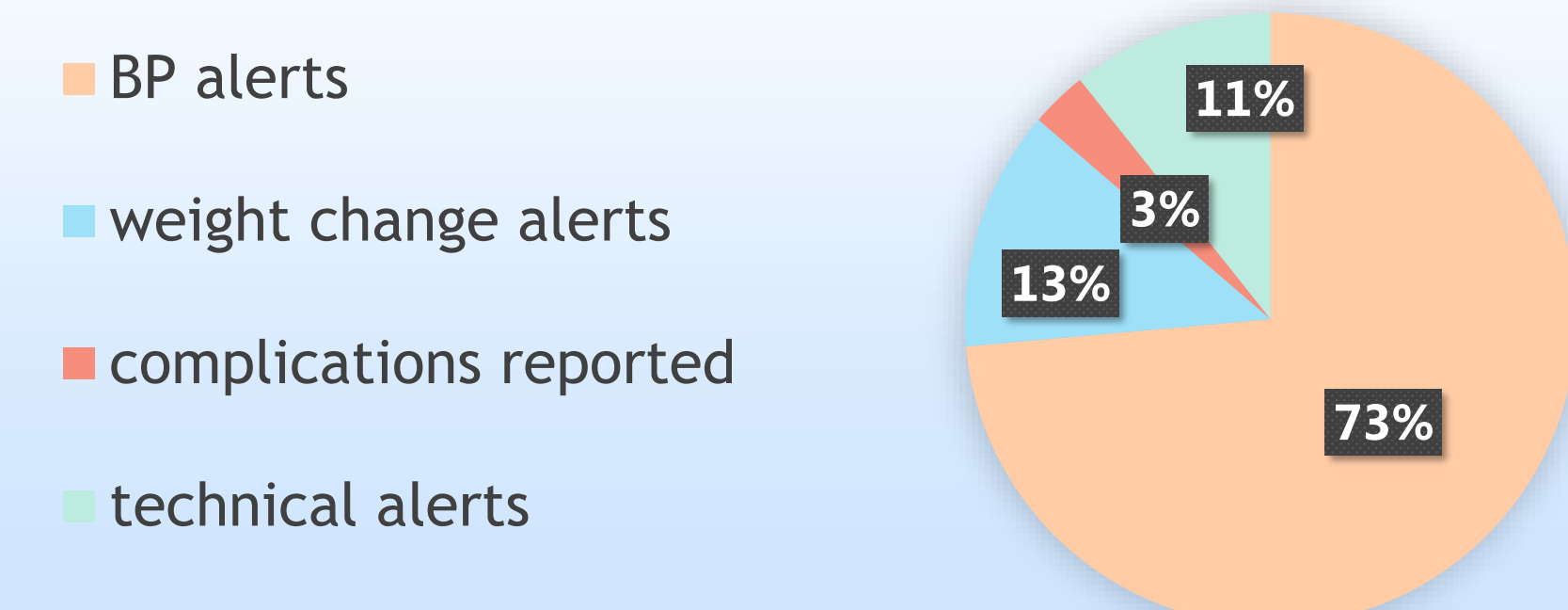
- Peritoneal dialysis (PD) offers a home-based alternative to hemodialysis, currently utilized by approximately 8% of dialysis patients in Israel
- PD allows for daily treatment, potentially preserving residual renal function and offering greater lifestyle flexibility
- However, between monthly follow-up visits, PD staff have no information about patient status, including adequacy of dialysis and complication risk
- This pilot study evaluated a virtual clinic model to enhance PD care and patient outcomes

Results

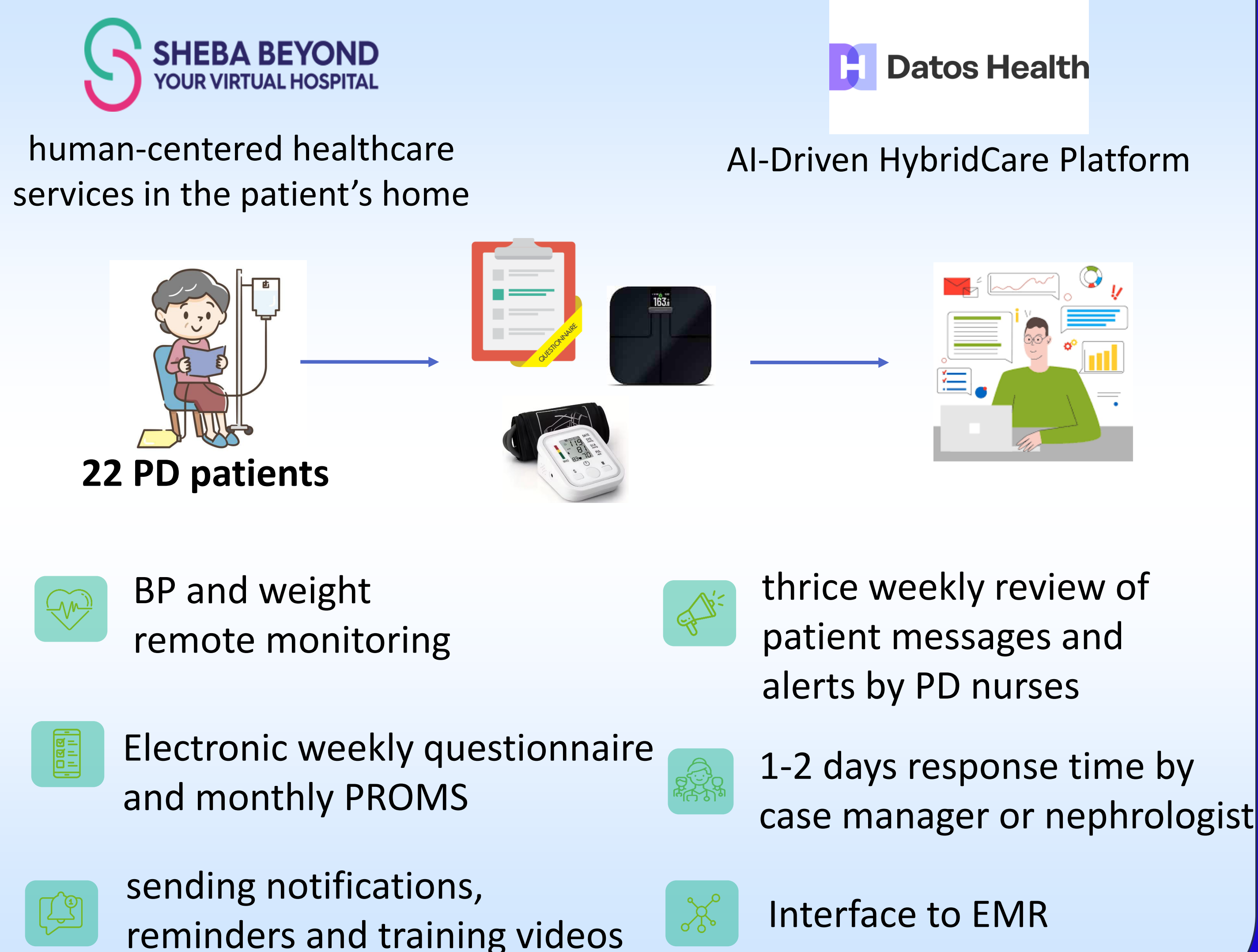
Virtual PD clinic in numbers

# of patients enrolled	22
length of pilot (days)- average (range)	223 (7-415)
# of questionnaires sent - average (range)	31 (7-60)
# of questionnaires answered- average (range)	16.3 (1-60)
percent of answered questionnaires	51%
# of patient alerts sent to PD staff	5106

Questionnaire alert type (%)

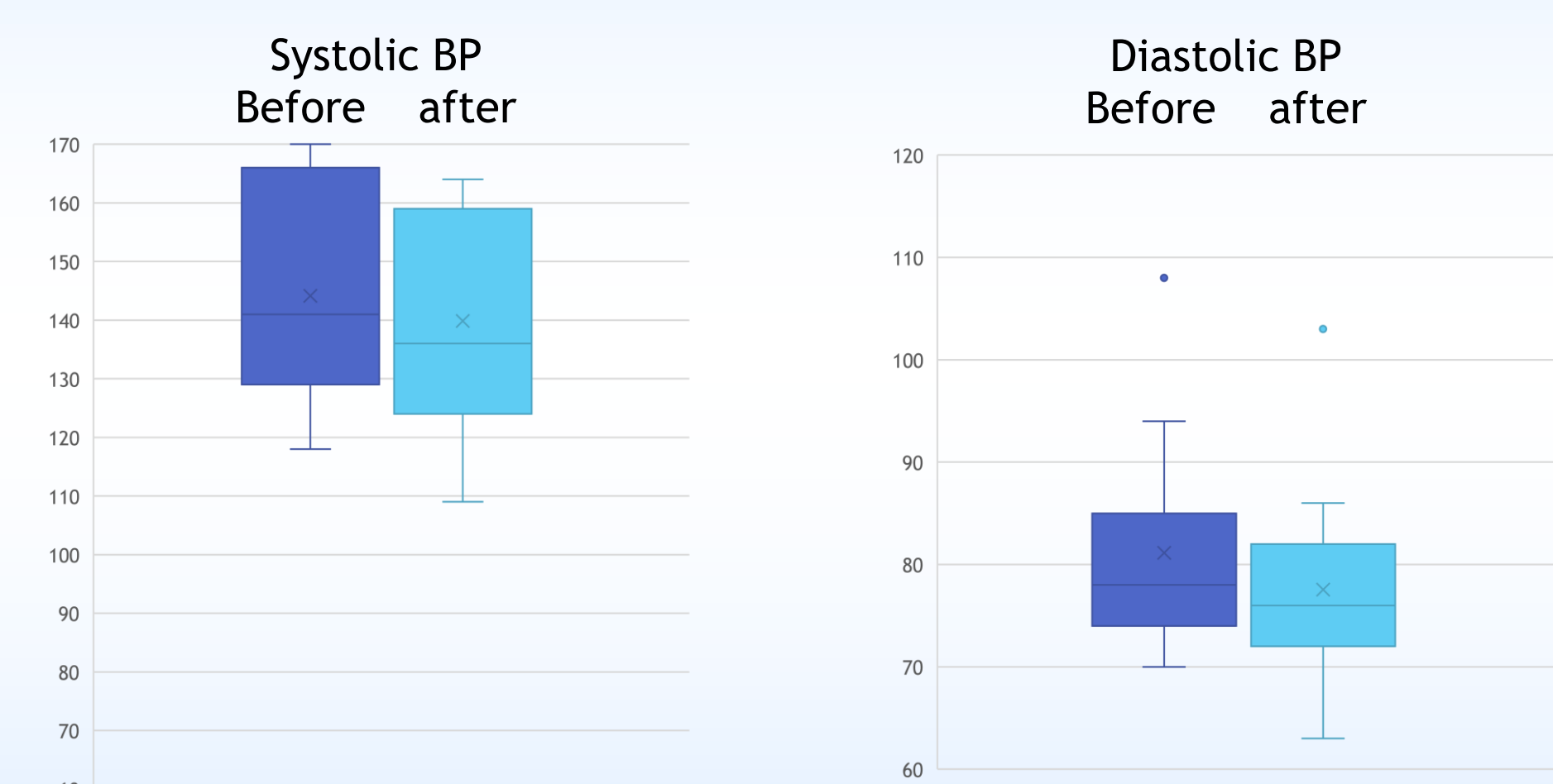


Methods



Preliminary outcomes

A trend towards lower blood pressure (small sample size) before vs after entering the program
Weight was stable

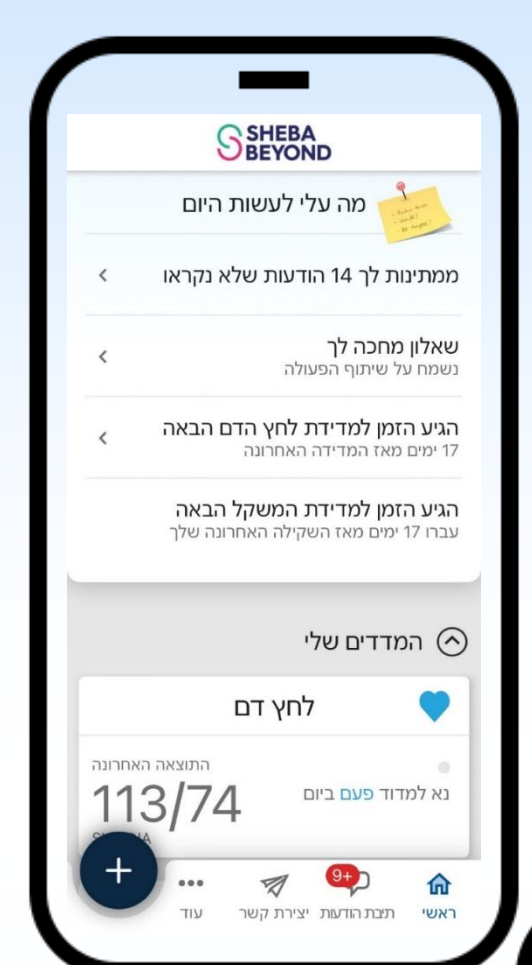


Average weight before vs after entering the program- 79.69 Kg and 79.63 Kg, respectively

Conclusions

- This virtual clinic pilot demonstrates the feasibility and operational effectiveness of a remote monitoring and communication system for PD patients
- The model aims to enhance PD care by facilitating early detection of complications, improving patient safety and satisfaction, reducing hospital visits, and providing continuous support and medical advice
- Ongoing data collection and patient feedback will further optimize the system and inform its broader implementation

Patient's app



PD staff dashboard

Plan summary	Plan start date	Last 7 days activity	Weight	Blood pressure	Updated date
5w 0d	Jan 28, 2025	4	64.83	119/82.90	1 day
12w 2d	Dec 08, 2024	7	67.83	130/63.64	7 hours
14w 2d	Nov 24, 2024	3	74.93	149/94.92	7 hours
21w 1d	Oct 07, 2024	2	88.05	142/70.71	2 days
21w 2d	Oct 06, 2024	5	90.81	161/84.65	19 hours
12w 0d	Dec 10, 2024	4	73.99	92/69.80	8 hours
25w 5d	Sep 05, 2024	2	80.52	154/65.75	1 day
31w 1d	Jul 29, 2024	5	64	196/78.74	5 hours
30w 0d	Aug 06, 2024	3	82.79	174/77.72	1 day

Patient health record

