

# AccuFIT9000

---

## Data Convert Software

### User's Manual

01 001RC

18.10

- 
- \* This User's Manual is stored in a PDF file on a USB Thumb Drive. In order to read this manual, Adobe Acrobat 4.x or higher is needed.
  - \* Windows 7/8/8.1/10/ are registered trademarks of Microsoft Corporation in the U.S.
  - \* No copying or reproduction of this product in any way form, in part or in whole, is permitted without the written permission of Kanomax, Levitt Safety, or Accutec-IHS.
  - \* The contents of this User's Manual are subject to change without prior notice.

---

---

## Table of Contents

<b>1. General Overview .....</b>	<b>4</b>
<b>Overview of System.....</b>	<b>4</b>
<b>System Requirements.....</b>	<b>4</b>
<b>2. Installation.....</b>	<b>5</b>
<b>Installation.....</b>	<b>5</b>
<b>Starting and Exiting the Software .....</b>	<b>5</b>
<b>3. User Interface .....</b>	<b>6</b>
<b>Main Screen.....</b>	<b>6</b>
<b>4. Data Importing.....</b>	<b>7</b>
<b>5. Contact Information .....</b>	<b>14</b>

---

## 1. General Overview

---

### Overview of System

---

This is software to create database(s) which will be used in AccuFIT9000 (hereinafter referred to as the “Device”) from a CSV file exported from the FitPro+™ Software.

---

### System Requirements

---

Operating Systems: English, French, Spanish, Portuguese

Windows® 7/8/8.1/10 32-bit or 64-bit

.NET Framework: .NET Framework 3.5 or higher

USB ポート: Not Required.

Ethernet: Required. (To install .NET Framework 3.5, Ethernet may be necessary.)

Wi-Fi: Not required.

---

## 2. Installation

---

### **Installation**

---

This software will be installed simultaneously when the AccuFIT9000 software is installed.

To install and uninstall, please refer to the AccuFIT9000 software User's Manual.

### **Starting and Exiting the Software**

---

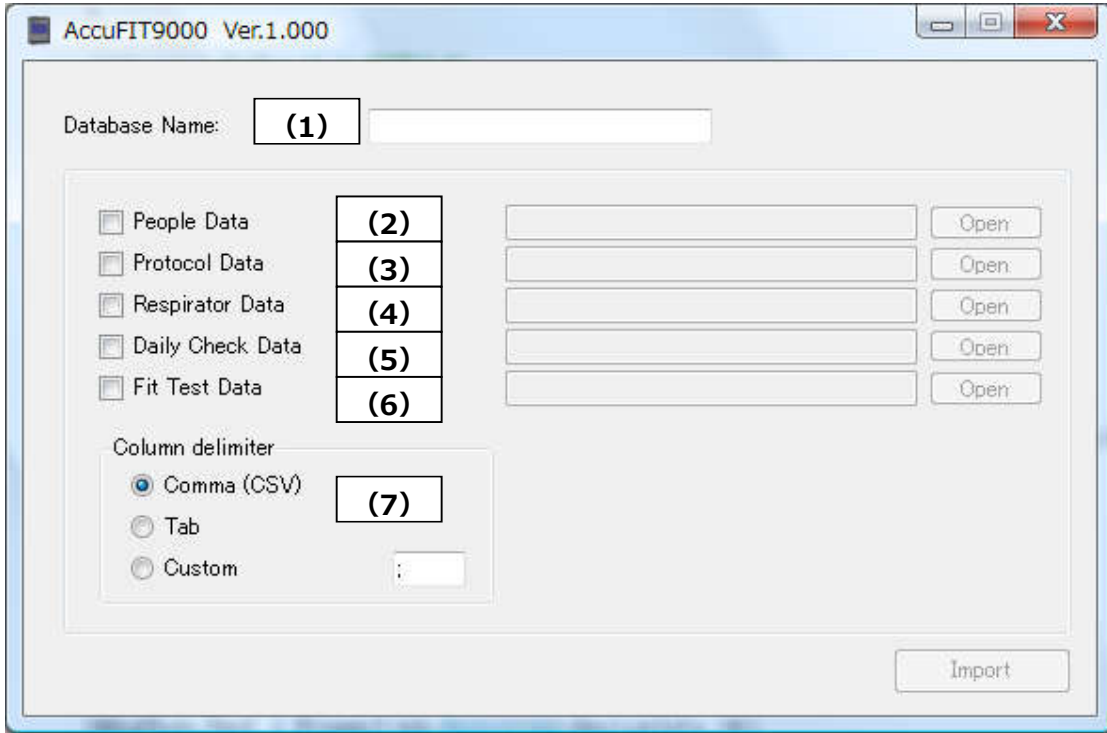
To start the Software, select **AccuFIT9000** on the **START** menu, and then click the **Data Convert Software** button.

To exit the Software, click "**X**" button on the title bar of the Main screen.

### 3. User Interface

#### Main Screen

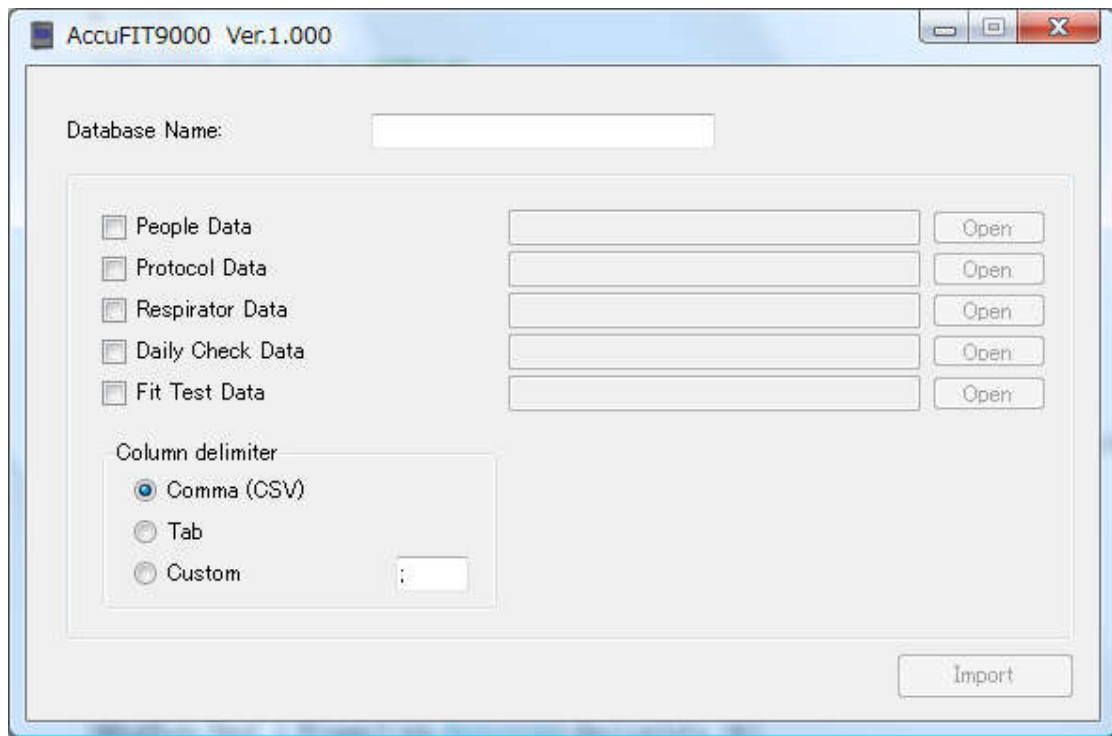
When the Software starts, the Main Screen appears.



(1)	Database Name	Enter a name for the database you are creating.
(2)	People Data	To import People data, select the People Data check box, and choose a file you wish to import.
(3)	Protocol Data	To import Protocol data, select the Protocol Data check box, and choose a file you wish to import.
(4)	Respirator Data	To import Respirator data, select the Respirator data check box, and choose a file you wish to import.
(5)	Daily Check Data	To import Daily Check data, select the Daily Check Data check box, and choose a file you wish to import.
(6)	Fit Test Data	To import Fit Test data, select the Fit Test Data check box, and choose a file you wish to import.
(7)	Column delimiter	Select type of column delimiter you used when you exported data from FitPro+™.

**Check the boxes indicating which data you wish to import. All fields are optional.**

## 4. Data Importing

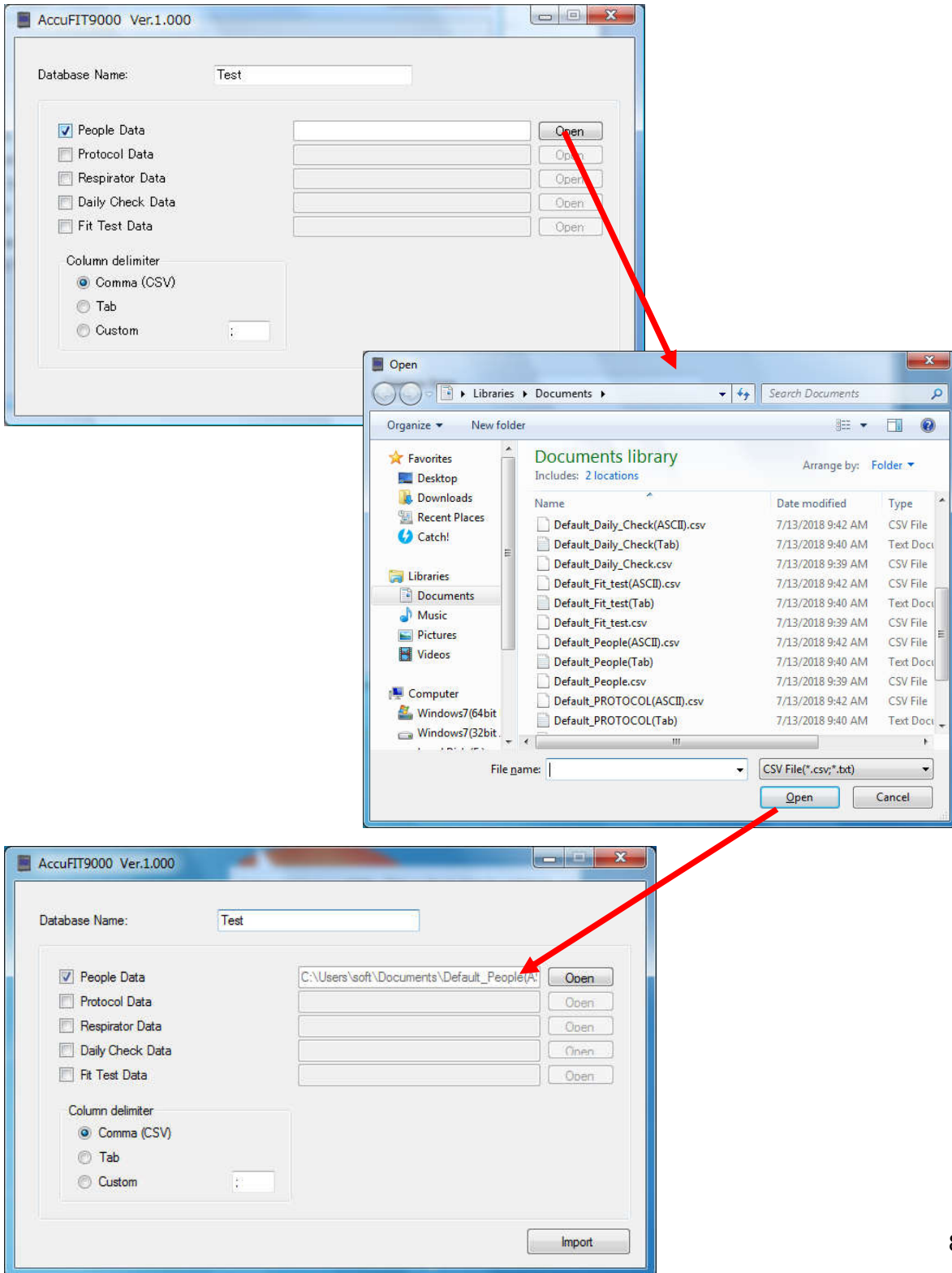


Example using CSV delimiter

- **Database Name:** Enter a name of database you are going to create from an imported CSV file. Database will be stored in Document¥AccuFit9000.

• **People Data:** To import People data, select the People Data check box.

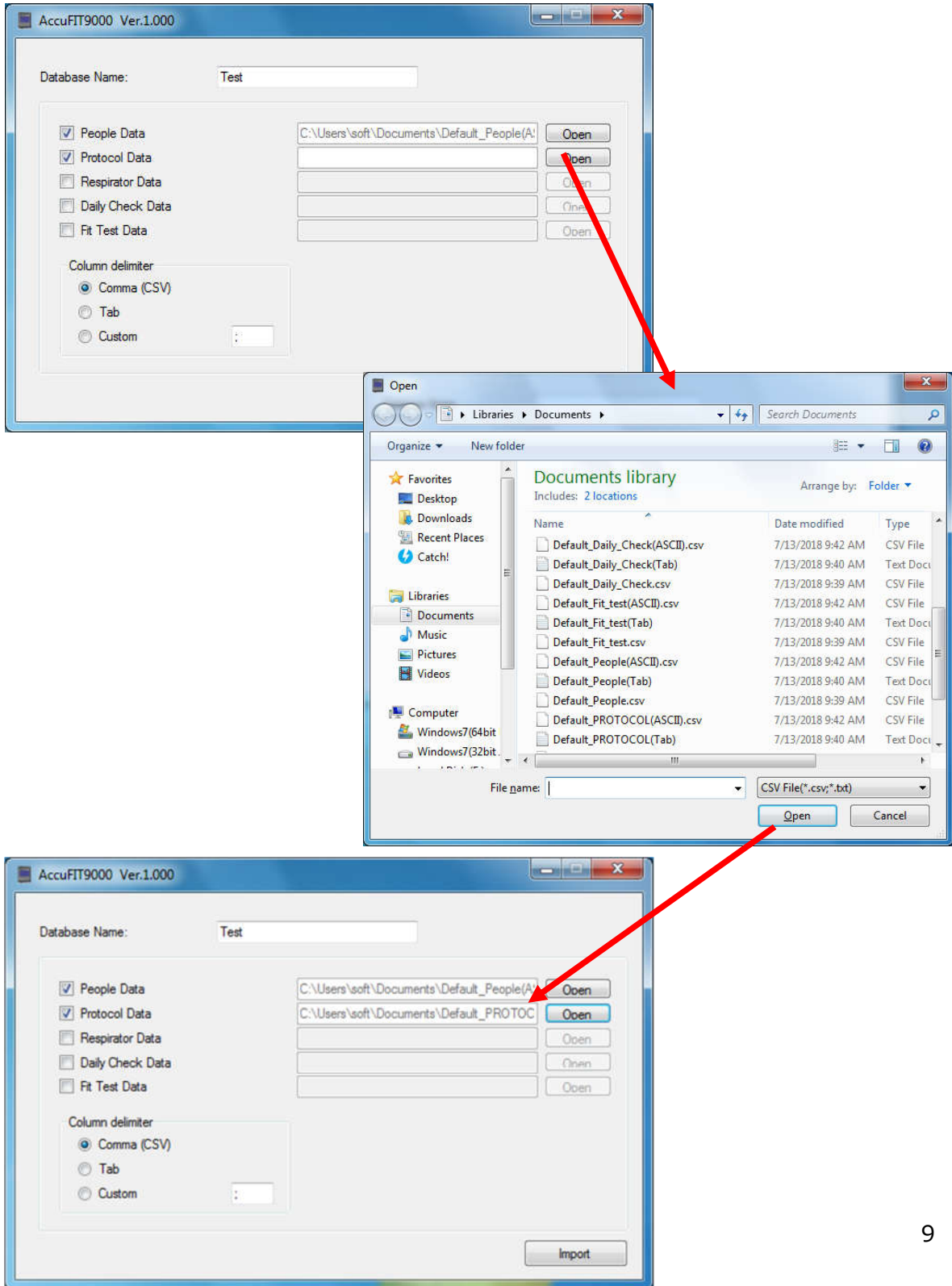
Click the **Open** button to open a dialog box. Select a CSV file of People data exported from the FitPro+™ database to open the file.



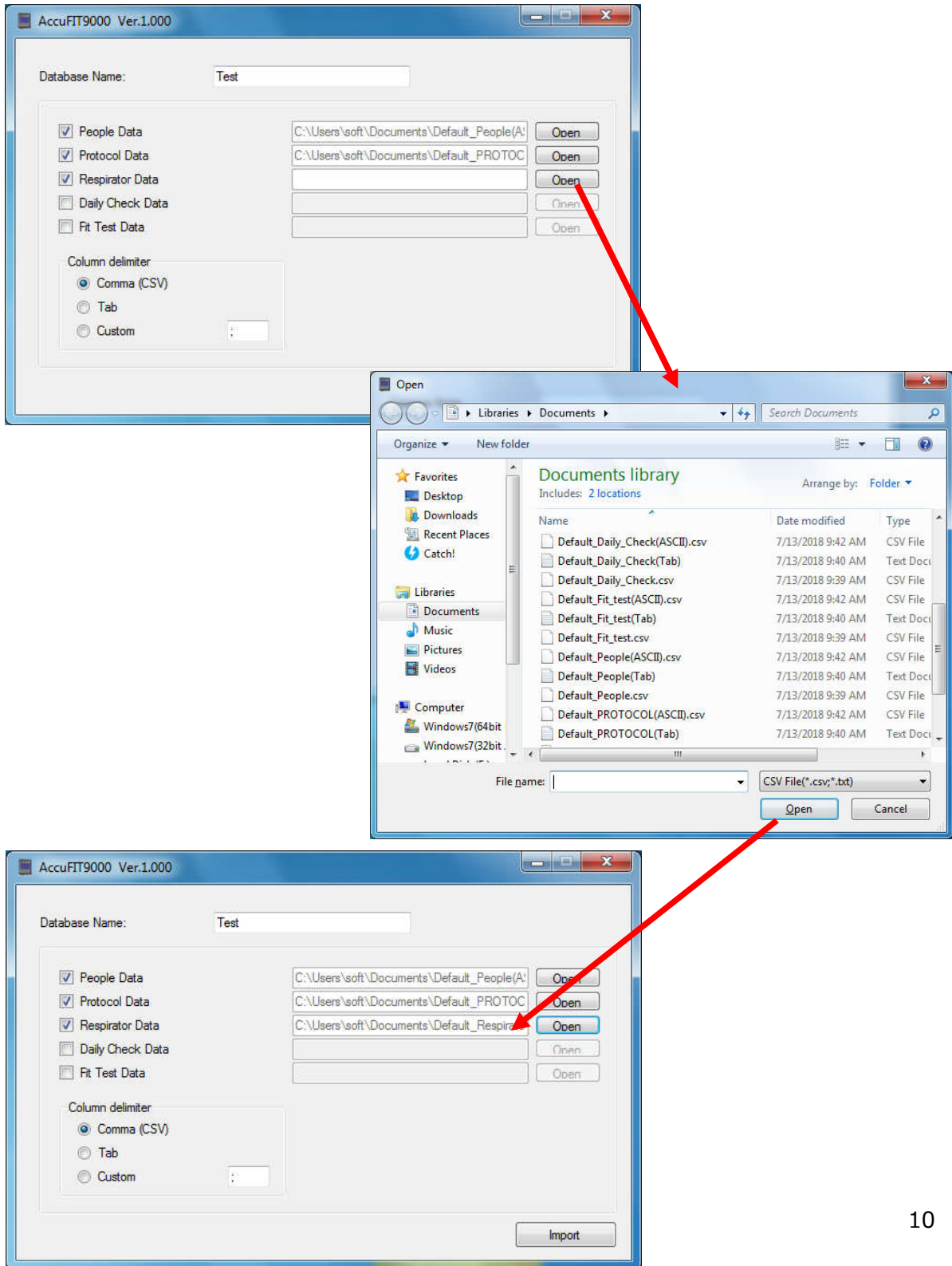


• **Protocol Data:** To import Protocol data, select the Protocol Data check box.

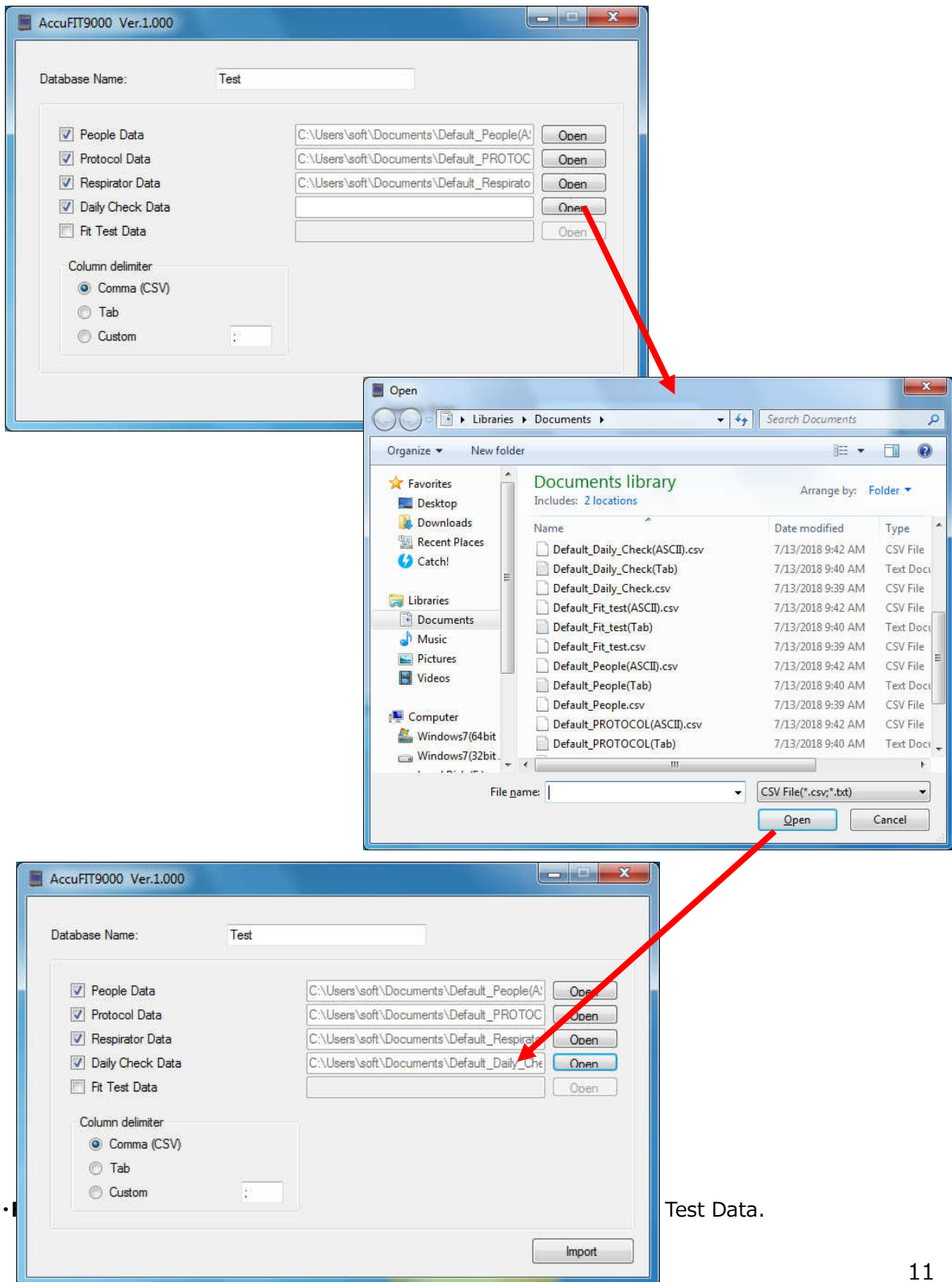
Click the **Open** button to open a dialog box. Select a CSV file of Protocol data exported from the FitPro+™ database to open the file.



- **Respirator Data:** To import Respirator data, select the Respirator Data check box. Click the **Open** button to open a dialog box. Select a CSV file of Respirator data exported from the FitPro+™ database to open the file.



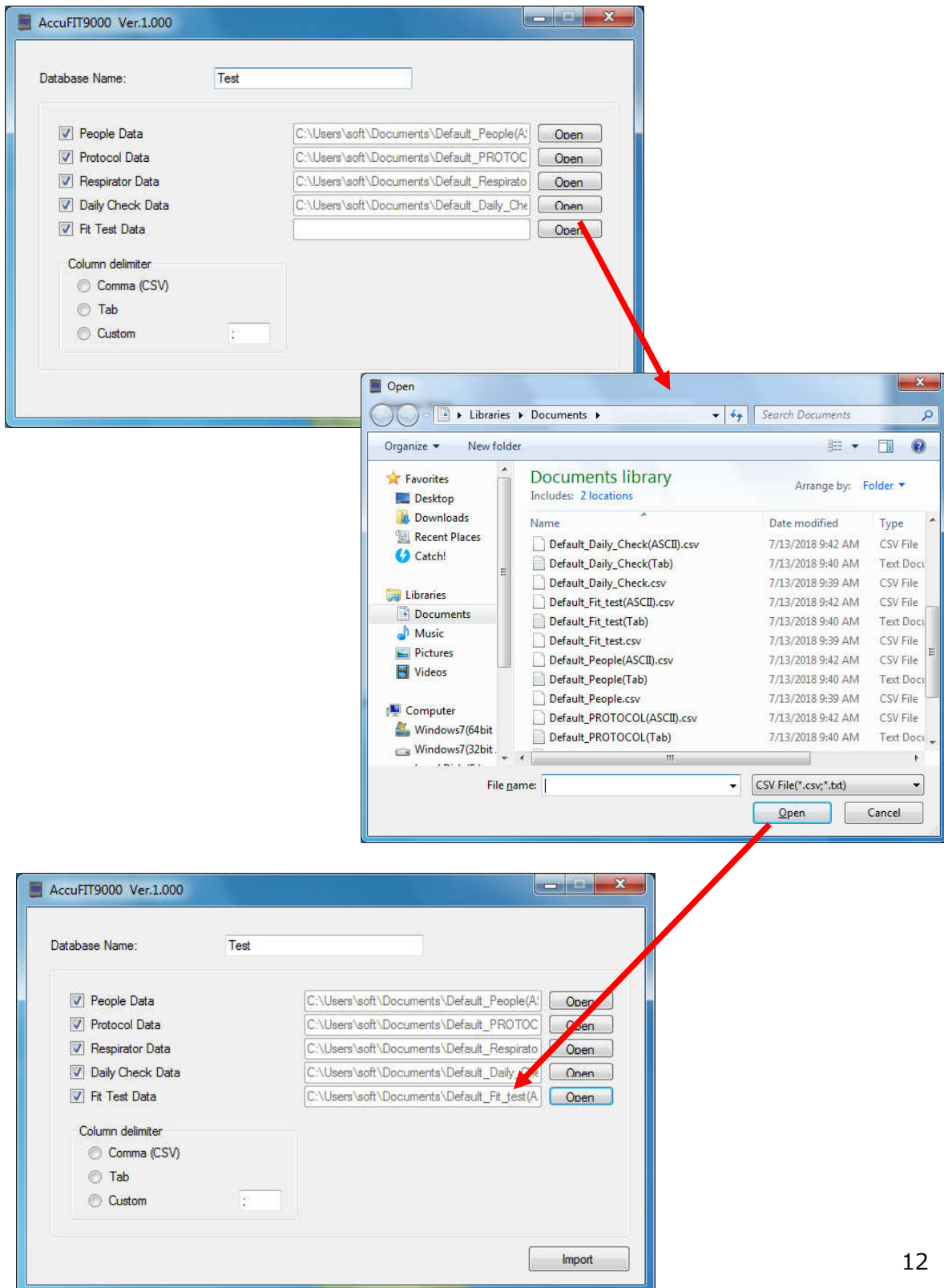
- **Daily Check Data:** To import Daily Check Data, select the Daily Check Data check box. Click the **Open** button to open a dialog box. Select a CSV file of Daily Check Data exported from the FitPro+™ database to open the file.



Test Data.

Click the **Open** button to open a dialog box.

Select a CSV file of Fit Test Data exported from the FitPro+™ database to open the file.



- 
- **Column delimiter:** Select the same column delimiter you used to export data from FitPro™+. If you select a different column delimiter, you cannot import data.
  
  - **Import Button:** Start importing data, and create a database with the file name you have entered for the Database Name. If database already has the same file name, the message “Do you want to create a new data?” appears. To create a new data, click **Yes** button. When you want to overwrite, click **No** button.

---

## 5. Contact Information

---



AccuTec-IHS, Inc.

1408 South Denver Ave Tulsa, OK 74119, USA

TEL: (918)-984-9838

URL: <https://www.accutec-ihs.com/>

E-Mail: [info@accutec-ihs.com](mailto:info@accutec-ihs.com)