

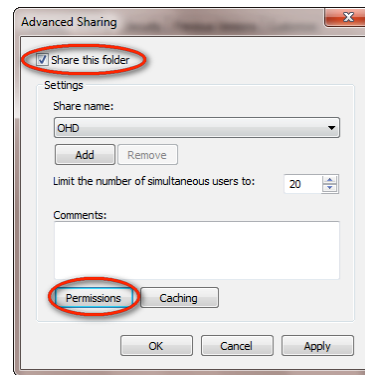


Steps for changing sharing permissions on Windows 7

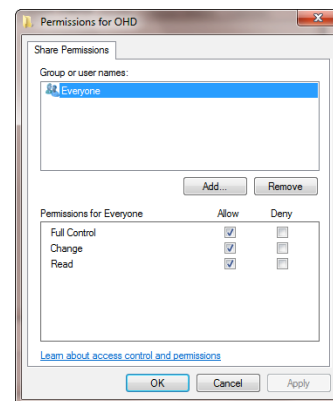
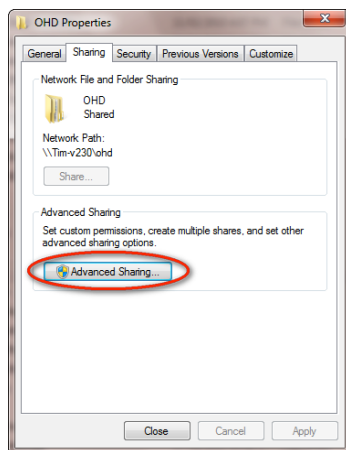
Problem: If this setting is not set correctly, FitTrack software may not save any data. This is especially critical when someone may have spent a day testing, and when the software is closed and reopened, no data has been saved.

Solution: The folder where FitTrack resides must be set to be shared with all users. This occurs only on some systems, but it would be better to follow these steps as a precaution.

1. On your computer, go to C:/ Program Files and look for the OHD folder. (In some versions of Windows 7, you will find OHD in "Program Files (x86).")
2. Right-click on the OHD folder, and select Properties.
3. Select the Sharing tab, and select Advanced Sharing...
4. Check the box next to Share This Folder, and then choose Permissions



5. With Everyone selected, check the boxes allowing Full Control, then click Apply and OK.

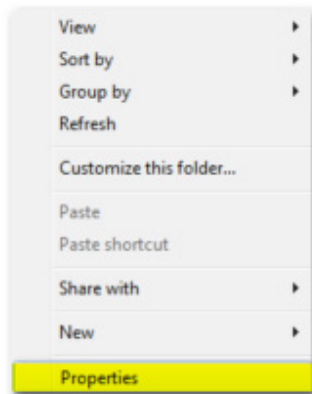


Steps for setting the graph to draw during tests on Windows 7

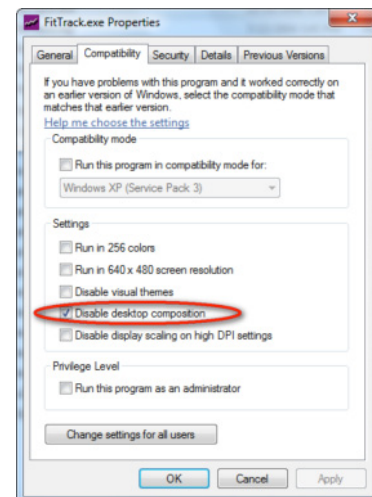
Problem: When using FitTrack software under the standard Windows 7 settings, the test graph may not draw or populate until the test step has been completed.

Solution: Follow these instructions if you'd like to correct this issue. If you cannot get to the screens as shown, you must ask your IT Administrator to give you the correct permissions, or for them to make this change.

1. Go to the FitTrack icon in Program Files: C:/ Program Files/OHD/501 (or 301)
2. Right-click the FitTrack program icon.
4. Select "Disable desktop composition."
5. Click on Apply, then OK.



2. Select Properties.
3. Choose the Compatibility tab.



6. Open FitTrack and begin testing.

Instructions for installing Quantifit Driver on Windows 7

1. Install FitTrack software by accepting all defaults on installation disc.
2. Connect the Quantifit
3. Go to Start button > Devices & Printers
4. At the bottom you'll see an unspecified device. Double-click this device
5. Click on Properties and then select the Update Driver button
6. Select "Automatic."
7. This should automatically update the driver.
8. Open FitTrack to see if it finds the Quantifit.