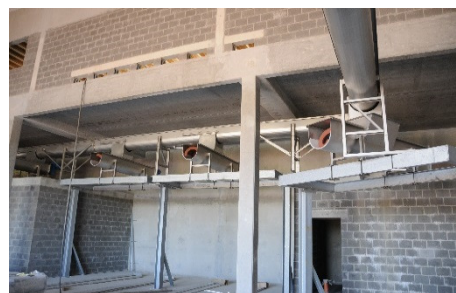


SCREW CONVEYORS

- A stainless steel trough, thickness 3mm.
- In the trough is a wear-resistant layer of high strength. Thickness of the coating: 10mm.
- A screw in spiral form, thickness 20mm. The diameter is adapted to the trough.
- The screw rests over all its length on the coating.
- This coating is replaceable, in parts of 1,2,or 3m.
- The end of the screw is coupled by a support, bolted to the gearbox.
- The drive is a hollow shaft geared motor.
- The reducer is fixed to the trough by a support.
- The reducer is removable without disassembling the screw.
- The trough is covered by a bolted cover plate.
- The screw is equipped with inlet and outlet hoppers, and is entirely closed.
- The screw is made of special hard steel to resist to the maximum wear of friction.
- The supports are adapted to the local circumstances, and are included in the price, according to description in the offer.

Models			
Type	Trough width [mm]	Screw diameter [mm]	Approximate flow (volume) [m ³ /h]
U200	200	160	2,3
U260	260	215	4,2
U320	320	280	10
U420	420	380	23
U500	500	460	41
U600	600	560	75

POSITIONS: horizontal, inclined (all angles), vertical



TWIN SCREWS

- A stainless steel trough, thickness 3mm.
- In the trough is a wear-resistant layer of high strength. Thickness of the coating: 10mm.
- Two screws in spiral form, thickness 20mm. The diameters are adapted to the trough.
- The screw rests over all its length on the coating.
- This coating is replaceable, in parts of 1,2,or 3m.
- The end of a screw is coupled by a support, bolted to the gearbox.
- The drive is a hollow shaft geared motor.
- The reducer is fixed to the trough by a support.
- The reducers are removable without disassembling the screws.
- The screw is made of special hard steel to resist to the maximum wear of friction.
- The supports are adapted to the local circumstances, and are included in the price, according to description in the offer.

Models			
Type	Trough width [mm]	Screw diameter [mm]	Approximate flow (volume) [m ³ /h]
U320	2x320=640	2x280	2x10=20
U420	2x420=840	2x380	2x23=46
U500	2x500=1000	2x460	2x41=82
U600	2x600=1200	2x560	2x75=150

