



PRODUCT OVERVIEW

Bench most adapted for :

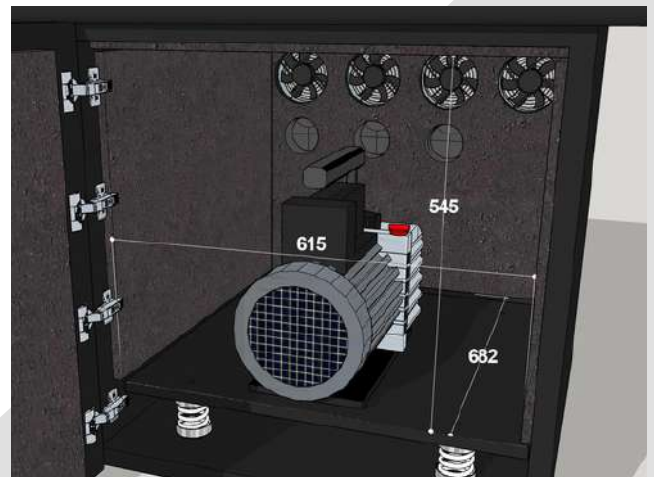


- Fully movable Mass Spectrometer Bench with 7x solidly built lockable casters
- Integrated noise reduction enclosure for accommodating vacuum pumps
- Patented dampening system to prevent vibrations being transmitted to the Mass Spectrometer
- Audible & visual overheating temperature alarm
- Quick & easy oil change procedure
- Tubing & cabling management
- Dedicated place for the solvent storage

Bench size :

External dimensions	CM	INCH
Width	190	74.80
Depth	88	34.64
Height	86	33.9
ionBench Weight	200 kg	441 lb
Weight Capacity	Up to 500kg	1110 lb

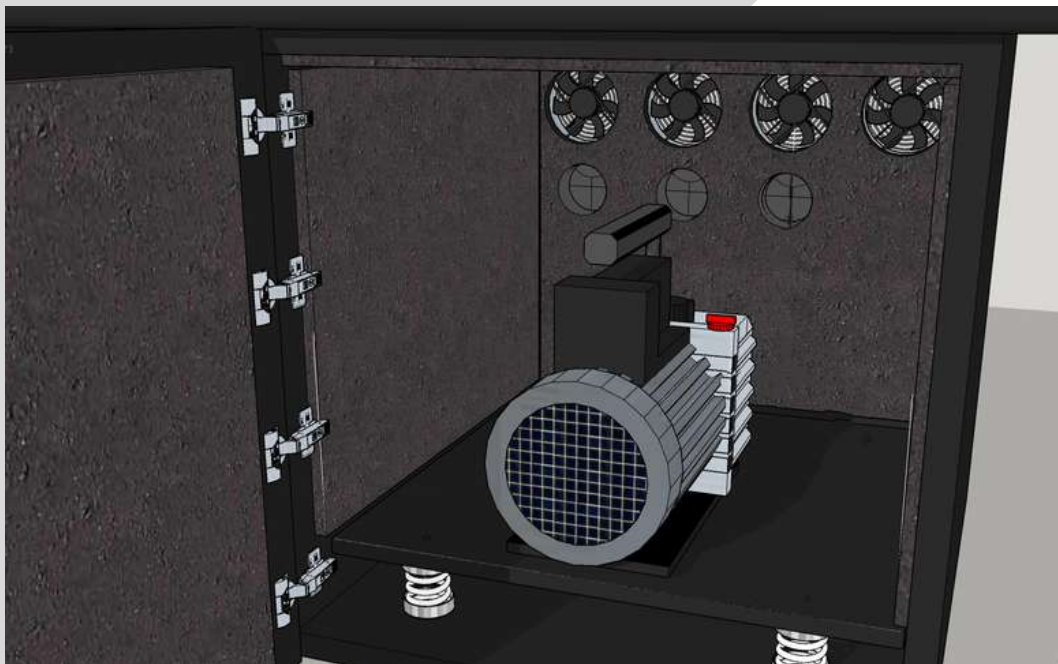
NE58 noise enclosure size :



SEE THIS VIDEO ON IONBENCH :

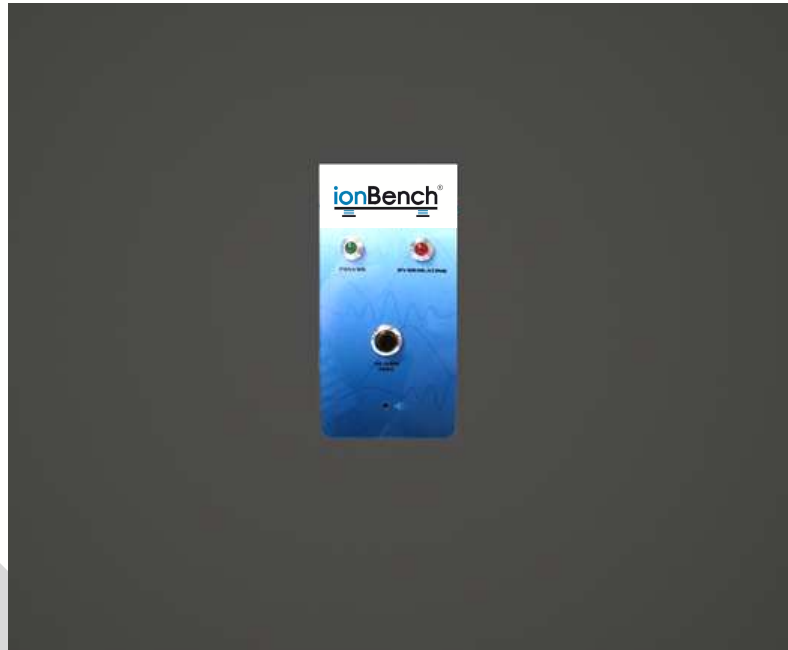


NOISE ENCLOSURE FOR VACUUM PUMPS



- Noise reduction performance : - 15 db(A) (80% reduction in noise perception)
- Compatible with one, two (or more vacuum pumps ...)
- Silent technology cooling fans (110/220 V, 50/60 hz)
- Thick special acoustic foam around the interior of the cabinet
- All requirements related to safety are considered in the design [ventilated enclosure by double ball bearing fans, use of non flammable materials (class 1 rated), and use of heat resistant materials]
- Noise reduction cabinet integrates an audible & visual (red LED) overheating temperature alarm (with battery backup) for an increased vacuum pump lifetime.

OVERHEATING ALARM TEMPERATURE



- In case of air intake or air exhaust obstruction, the air inside the noise enclosure could exceed the limits set by vacuum pump manufacturers for best performance. With this sensor, if the temperature goes above an acceptable limit, the alarm will sound (a red led will come on and an audible continuous alarm will start ~ 90 dB).
- Alarm Test function: test switch button available to make sure batteries are charged and alarm is functional. When pushing the switch, the red led will come on and a continuous audible sound will start if the system is operating correctly.
- Requires 2 x 1.5 AA Batteries - independent from noise enclosure main power supply.

VIBRATION DAMPENING



- One issue that is not addressed by conventional lab benching for mass spectrometers is the vibration transmitted by the vacuum pump to the mass spectrometer. Excessive vibration affects the performance and lifetime of turbomolecular pumps inside the mass spectrometer, and thus reduces performance which can lead to costly repairs. The IonBench solution is to apply patented coil spring-based vibration dampeners which reduce vibrations by 99%.
- The design of the system prevents vibrations being transmitted from the primary vacuum pumps to the Mass Spectrometer (especially to the Turbomolecular pump inside the MS)
- Calibrated springs are matched to your vacuum pump configuration (rotation speed, frequency and weight)
- Optional oil drip steel tray can be provided for each vacuum pump

FULLY MOVABLE BENCH



- Fully movable bench with a weight capacity up to 500 kg / 1110 lbs and standard laminate chemically resistant worksurface / Trespa TopLab optional for laboratory applications. Different bench sizes available depending on configuration of the LC/GC/MS. Black steel powder coated frame.
- Provided with 7x solidly built lockable casters. Simplifies moving the system to ensure easy access to the back of the instruments which also saves space in your lab

***Focus on Trespa® TopLab®PLUS**

For environments where hygiene, avoidance of contamination, sustainability, ergonomics and safety are of importance. Manufactured with Trespa's in-house developed EBC-technology.

Ideal for chemical, physical and analytical laboratories.

Easy to clean and excellent resistance to most aggressive chemicals and cleaning agents.

Anti-Bacterial



Follow **ionBench** on LinkedIn

AVAILABLE OPTIONS



DRAWERS

(DR3)

Add three drawer option to your bench



INFORMATION CONTROL PACKAGE

(ARM1)

Features include a retractable keyboard, mouse table and LCD screen mounting with an adjustable stand for easy and convenient viewing



PC HOLDER

(PC1)

Save space with this vertical mount PC holder

AVAILABLE OPTIONS



RETRACTABLE KEYBOARD

(KEY1)

Retractable keyboard and mouse table



ARTICULATED DISPLAY ARM

(SCR1)

Up to 27" screen size
Display mounting with an adjustable stand
for easy and convenient viewing.

For biggest screen please ask.



MONITOR ARM WITH KEYBOARD TRAY

(ARMERG)

Flat screen monitor arm including tray
for keyboard

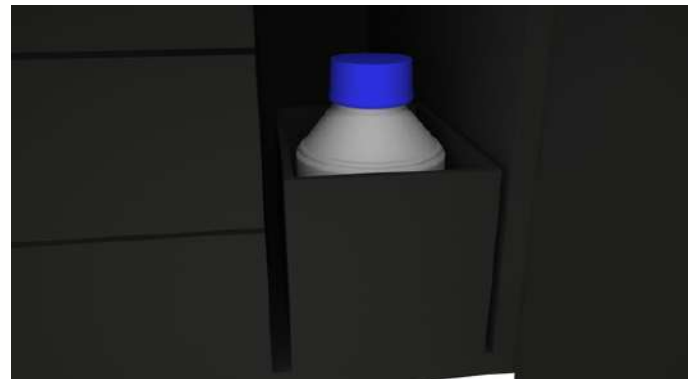
AVAILABLE OPTIONS

SOLVENT WASTE STORAGE

(SOLV)

Ideal for Waste Container Storage to improve safety

Internal dimension :
200 x 300 x 200 mm
7.87 x 11.81 x 7.87 in



STAINLESS STEEL OIL DRIP PAN

(VPSP)

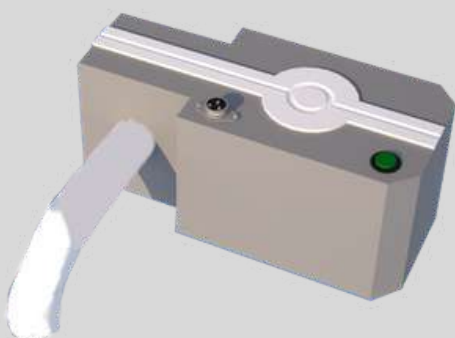
This helps to prevent and avoid oil leaks.

dimension (D x W) :
500 mm x 450 mm
19.68 in x 17.71 in



OIL DRAIN PUMP

(ODP)



OR / AND

Oil change kit for easy cleaning and changing of oil

Oil drain kit include :

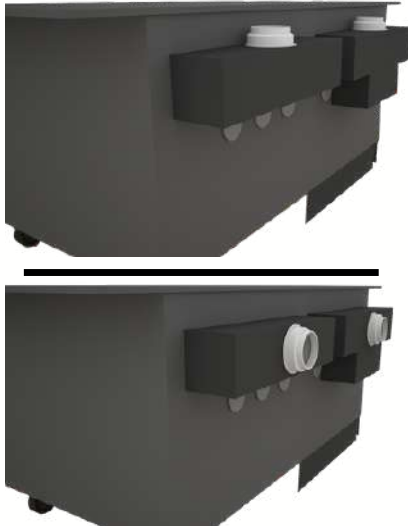
- Adaptator to your pump
- Valve
- Quick connector
- 30cm pipe
- Glue
- Teflon roll

OIL DRAIN KIT

(ODK)



AVAILABLE OPTIONS



HEAT REMOVAL MODULE (HRM)

Vacuum pumps produce significant heat. Instead of spending money on an Air Conditioning system, it is more environmentally friendly to remove vacuum pump heat out of the laboratory to maintain an acceptable ambient temperature. The **HRM** module allows you to connect the vacuum pump cabinet to your laboratory extraction / ventilation system. Connection flange can be installed horizontally or vertically



LATERAL SOLVANT WASTE STORAGE (LAT-SOLV)

Allows you to place your solvent waste on the side of the bench

Internal dimension :
200 x 300 x 200 mm
7.87 x 11.81 x 7.87 in



8 ELECTRIC PLUG EU (ELECEU)

Electric powerstrip for european country (except United Kingdom - Switzerland and Germany)

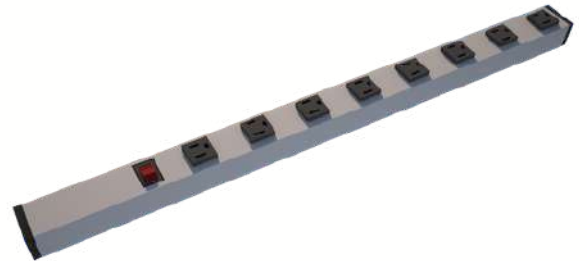
230V - 50Hz - Type E

AVAILABLE OPTIONS



8 ELECTRIC PLUG USA (ELECUSA)

Electric powerstrip for USA
120V - 60Hz - Type A / B



6 ELECTRIC PLUG UK (ELECUK)

Electric powerstrip United Kingdom
230V - 50Hz - Type G



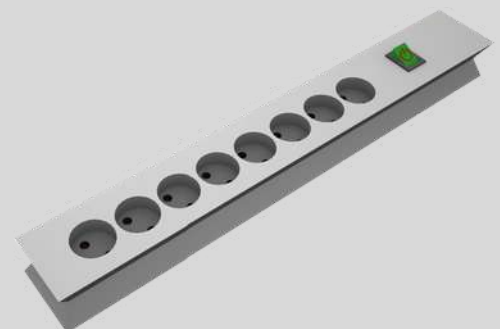
6 ELECTRIC PLUG CH (ELECCH)

Electric powerstrip for Switzerland
230V - 50Hz - Type J

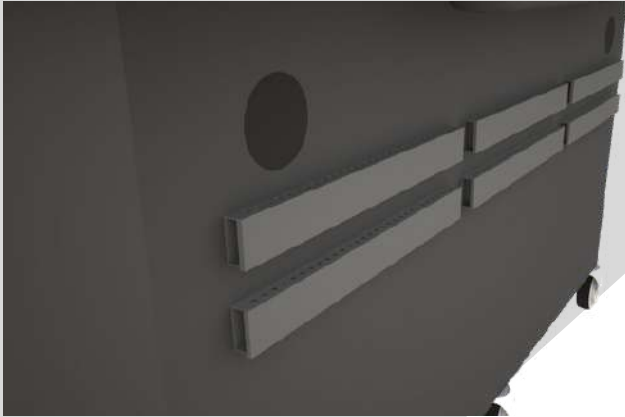


8 ELECTRIC PLUG DE (ELECDE)

Electric powerstrip for Germany
230V - 50Hz - Type F



AVAILABLE OPTIONS



CABLE TRAY MANAGEMENT (6 PIECES)

(CABLE-TRAY)

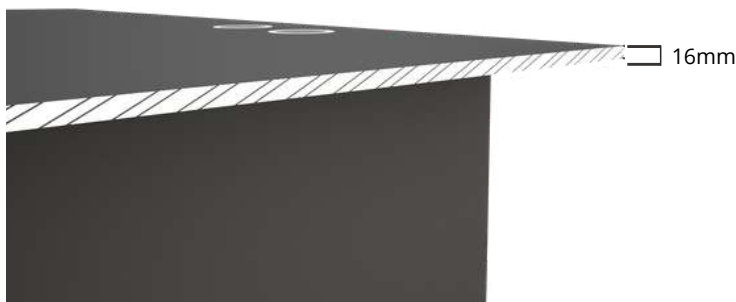
Keep cables, power strips, surge protectors, and power adapters hidden and tidy



GREY COLOUR BENCH

(GREY-CO)

Optional light grey colour.



WORKSPACE UPGRADE TO TRESPA TOPLAB

(TRESPA-WS)

Trespa* chemically resistant work top.

**see page 5*

AVAILABLE OPTIONS



SLIDING TRAY

(SLIDE)

Heavy duty slide out vacuum pump tray allows full access to the pumps, filters and connectors.



CUSTOM BENCHES



Many designs and sizes available on request.

AUTOMATIC OVERHEATING DOOR OPENING

(DOOR-OPE-SAFETY)

Automatic door opening if the enclosure temperature becomes too high



AVAILABLE OPTIONS



GAS FIXING SYSTEM

(CART-BOTTLE)

Available on request.
Depends on the size and number of
bottles to be used

**WE ALSO DESIGN COMPLETE LAB LAYOUTS WITH
STANDARD OR CUSTOM BENCHES.
PLEASE CONTACT US FOR MORE INFORMATION**



**SCAN THIS QR CODE TO SEE
WHAT IONBENCH CAN DO FOR
YOU**

Description	Part number
ionBench MS	BCH190NE58
Optional Drawers	DR3
Optional information control package	ARM 1
Retractable keyboard	KEY 1
Articuled display arm	SCR 1
Flat screen monitor arm including tray for keyboard	ARM-ERG
Optional CPU holder	PC1
Optional solvent waste storage	SOLV
Optional Stainless Steel Oil Drip Pan	VPSP58
Optional Oil Drain Pump	ODP
Optional Oil Drain Kit	ODK
Optional Heat Removal Module	HRM
Optional lateral solvent waste storage	LAT-SOLV
8 Electric plug EU	ELECEU
8 Electric plug USA	ELECUSA
6 Electric plug UK	ELECUK
6 Electric plug CH	ELECCH
8 Electric plug DE	ELECDE
Cable Tray (6 pieces)	CABLE-TRAYx6
Light grey colour bench	GREY-CO
Workspace upgrade to Trespa TopLab	TRESPA-WS
Sliding tray	SLIDE
Increased worksurface depth to 97cm (38,20 inch)	D97
Automatic overheating door opening	DOOR-OPE-SAFETY
Gas fixing system	CART-BOTTLE

