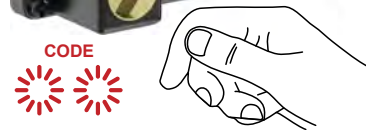




PAT. PEND.



SP01 code

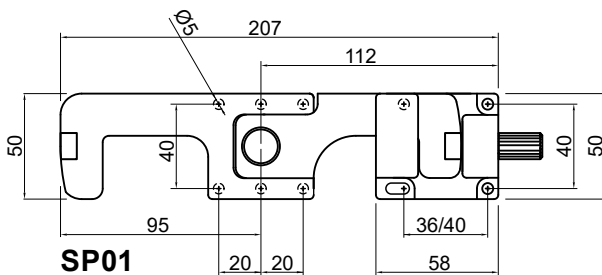


CODE

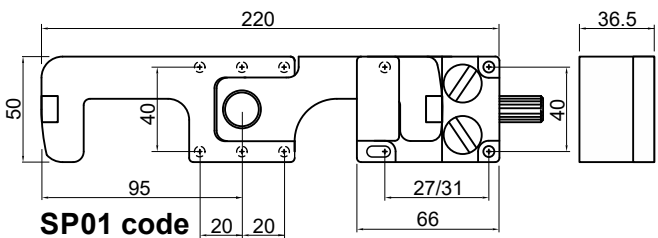


SP01

VIDEO:



SP01



SP01 code

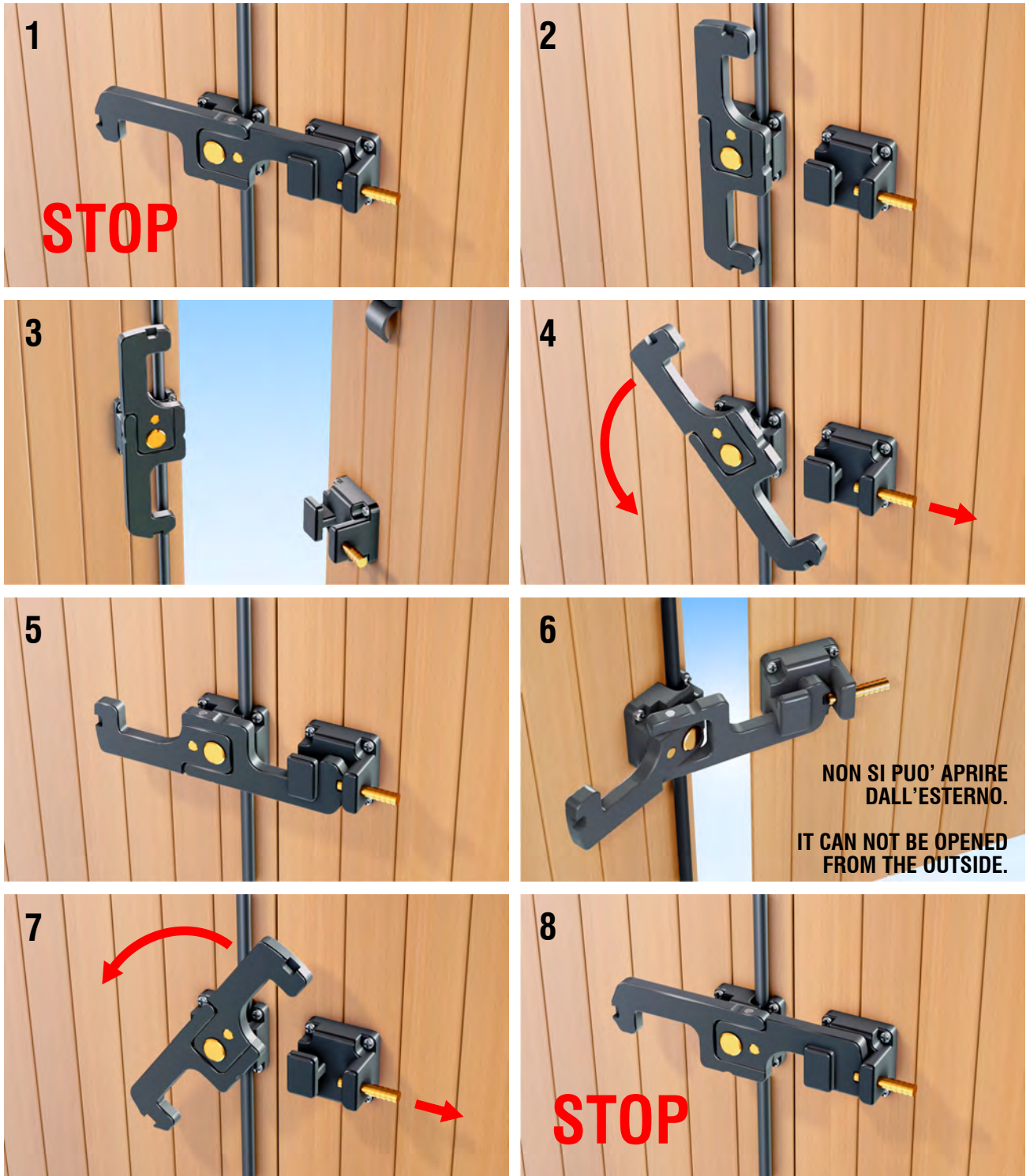


fig. 1-8 Barra orizzontale dritta mantiene gli scuri saldamente bloccati.

fig. 6 Barra girata di 180° Spingendo una delle ante verso l'esterno il braccio si piega e permette la parziale apertura delle ante. Piegandosi il braccio si blocca e mantiene lo scuro in sicurezza (non apribile dall'esterno) nonostante la semi-apertura. Per poterlo richiudere è necessario riportarlo in posizione parallela (perciò con ante chiuse).

fig. 2 Barra verticale neutra; in questa posizione la barra rimane bloccata verticalmente in modo da non interferire con le ante.

fig. 1-8 When locked horizontally, the bar keeps the shutters firmly locked. With the bar rotated of 180°, by pushing the

fig. 6 shutters outward, one of the two arms, folds in and allows the partial opening.

When folded, one of the arms, wedges in the dovetailed base and keeps the pannels blocked, not openable from outside. To close the shutter back, it is necessary to realine the bar (therefore to close it).

When vertical the bar is in neutral position; in this situation the bar remains locked vertically so not to interfere with the shutters.

fig. 2