



TRIUNFO SANITATION DISTRICT

A PUBLIC AGENCY

Board of Directors

Janna Orkney, Chair

Susan Pan, Vice Chair

Leon Shapiro, Director

Raymond Tjulander, Director

James Wall, Director

Providing Outstanding Service Since 1963

November 26, 2018

Board of Directors
Triunfo Sanitation District
Ventura County, California

EMERGENCY POWER CAPABILITIES FOR DISTRICT FACILITIES - UPDATE

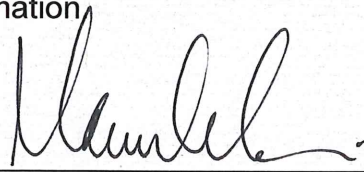
Summary

At the October 22, 2018, Triunfo Sanitation District (TSD) Board Meeting, Vice Chair Pan requested an update on the District's emergency power capabilities in the event of a power shutdown. This request was based on recent destructive wildfires that have plagued California, as well as recent implementation of SCE's Public Safety Power Shutdown (PSPS) plan. Following the Thomas Fire in 2017, staff evaluated existing emergency generator capabilities to determine adequacy of existing emergency power resources. Specifically, whether or not the District has ample backup power in place, or readily available, to mitigate both planned and unplanned electrical service disruptions.

Staff has evaluated backup emergency power capabilities for all TSD facilities, including the District's potable water booster and pump stations and wastewater lift stations. The evaluation concluded that the District has adequate emergency backup power generations capabilities to effectively maintain full operational capability of both water and wastewater systems under any anticipated electrical power outage event. This conclusion was further supported by the District's ability to maintain emergency operations throughout the Woolsey fire event.

Please contact me at 805-658-4621 or email marknorris@vrsd.com if you have any questions or need additional information.

REVIEWED AND APPROVED:

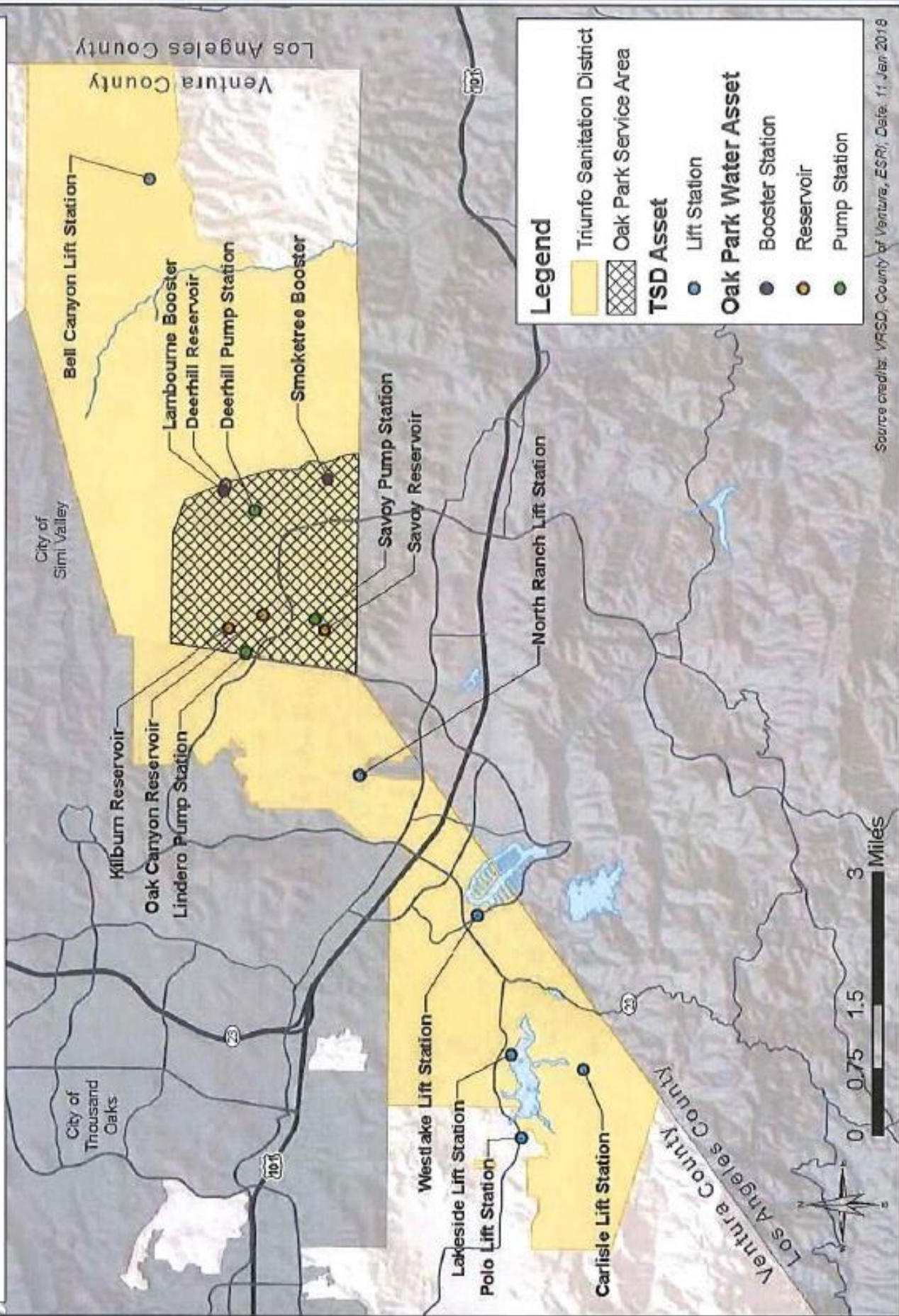


Mark Norris - General Manager

Attachment: Photos and description of District facilities

This page is intentionally blank

Triunfo Sanitation District & Oak Park Water



Source credits: VRSD, County of Ventura, ESR, Date: 11 Jan 2019

TSD Emergency Generator Capabilities 2018

ITEM # 7

| <u>Facility</u> | <u>Facility Type</u> | <u>Generator Type/Connection</u> |
|-----------------|----------------------|----------------------------------|
| Bell Canyon | Lift Station | Diesel Generator |
| Carlisle | Lift Station | Diesel Generator |
| Lakeside | Lift Station | Diesel Generator |
| North Ranch | Lift Station | Diesel Generator |
| Polo | Lift Station | Diesel Generator |
| Westlake | Lift Station | Diesel Generator |
| Deerhill | Pump Station | Diesel Generator |
| Lindero | Pump Station | Diesel Generator |
| Savoy | Pump Station | Connection for portable unit |
| Lambourne | Booster Station | Connection for portable unit |
| Smoketree | Booster Station | Connection for portable unit |