



Nova

6 M / Max 15 kg



bébé·confort®



EN IMPORTANT

Keep these instructions for future reference.

FR IMPORTANT

Conserver ces instructions pour consultation ultérieure.

ES IMPORTANTE

Conservar para futuras consultas.

IT IMPORTANTE

Conservare queste istruzioni per consultazione futura.

PT IMPORTANTE

Guardar este manual para consulta posterior.

RU ВАЖНО

Сохраните это руководство для последующего использования.

TR ÖNEMLİ

Bu talimatları gelecekte başvurmak için saklayın.

AR هام

احتفظ بهذه التعليمات للإطلاع عليها مستقبلاً.



EN Instructions for use

FR Mode d'emploi

ES Instrucciones de uso

IT Istruzioni d'uso

PT Instruções de utilização

RU Инструкция по применению

TR Kullanım talimatları

AR تعليمات الإستعمال

INDEX



5



6



16



19



21



23



29



31



36



38



44



49



54



EN Depending on version

FR Selon version

ES Según versión

IT Secondo la versione

PT Segundo a versão

RU зависимости от артикула

TR Versiyona bağlı

AR حسب النوع





EN Assembling

FR Montage

ES Montaje

IT Montaggio

PT Montagem

RU Сборка

TR Montaj

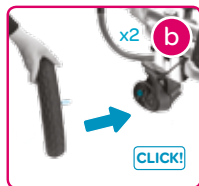
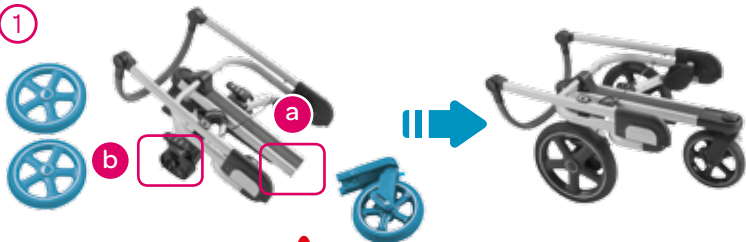
AR التجميع



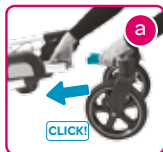
www.bebeconfort.com



1

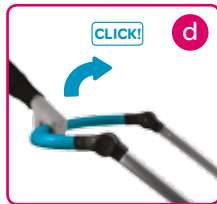
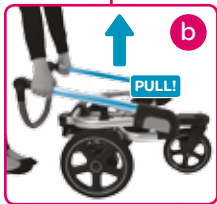
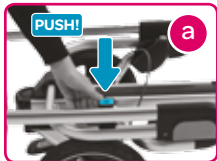
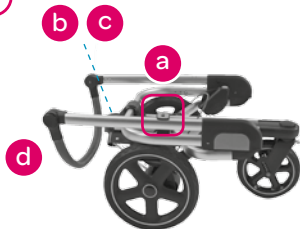


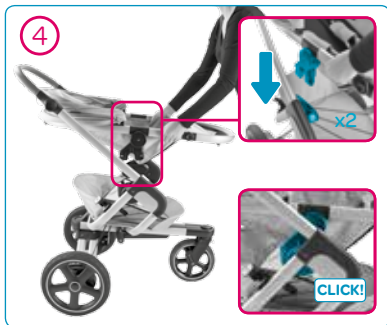
EN Depending on version
FR Selon version
ES Según versión
IT Secondo la versione
PT Segundo a versão
RU ЗАВИСИМОСТИ ОТ АРТИКУЛА
TR Versiyona bağıli
AR حسب النوع





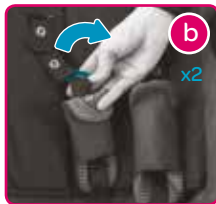
2

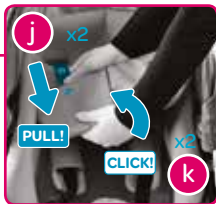
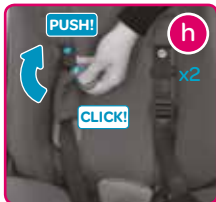






6



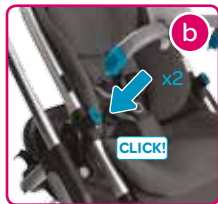




7



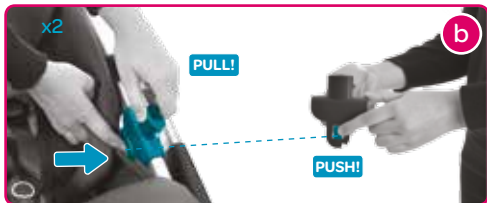
a



b



8





- EN** Self-folding in few seconds. Folding time may vary according to ambient temperature. In some cases, it can be required to support / assist the folding process with one hand.
- FR** Pliage automatique en quelques secondes. La vitesse de pliage peut évoluer en fonction de la T° d'utilisation ; dans certains cas un accompagnement du pliage avec une main peut-être nécessaire.
- ES** Auto-plegable en pocos segundos. El tiempo de plegado puede variar según la temperatura ambiente. En algunos casos, puede ser necesario para apoyar / asistir el proceso de plegado con una mano.
- IT** Chiusura automatica in pochi secondi. Il tempo di chiusura può variare in base alla temperatura in cui ci si trova. In alcuni casi potrebbe essere necessario accompagnare la chiusura con una mano.
- PT** Auto-dobrável em poucos segundos. O tempo de dobra pode variar de acordo com a temperatura ambiente. Em alguns casos, pode ser necessário apoiar / auxiliar o processo de dobragem com uma mão.
- RU** Складывается за несколько секунд. Время сгиба может варьироваться в зависимости от температуры окружающей среды. В некоторых случаях может потребоваться поддержка / содействие процессу складывания одной рукой.



TR Birkaç saniye içinde kendiliğinden katlanır. Katlanma süresi, ortam sıcaklığına bağlı olarak değişiklik gösterebilir. Bazı durumlarda, bir elle katlama işlemini desteklemek / yardımcı olmak istenebilir.

AR في بضع ثوانٍ للطي النفس. للطي الوقت قد تختلف وفقا لدرجة الحرارة المحيطة. في بعض الحالات، يمكن أن تكون هناك حاجة إلى دعم / مساعدة عملية للطي مع يد واحدة.



EN Folding

FR Pliage

ES Plegado

IT Chiusura

PT Fecho

RU Складывание

TR Katlanma

AR الطي



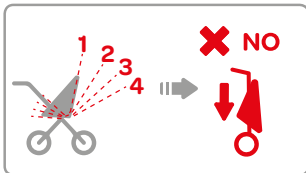
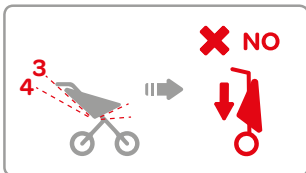
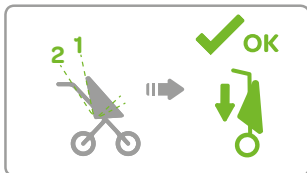
www.bebeconfort.com



1

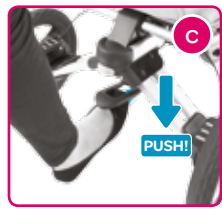
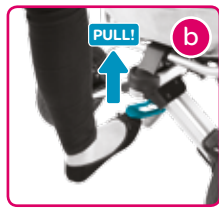
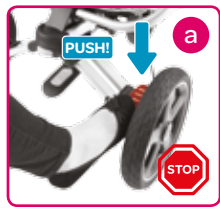


CLICK!





2





- EN Compact folding
FR Pliage compact
ES Plegado compacto
IT Chiusura compatta
PT Fecho compacto
RU Компактное складывание
TR Kompakt katlama
AR للطّي المدمجة



www.bebeconfort.com





EN Unfolding

FR Dépliage

ES Desplegado

IT Apertura

PT Abertura

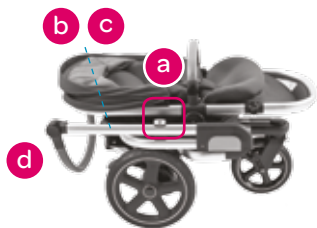
RU Раскладывание

TR Açılma

AR البسط



www.bebeconfort.com





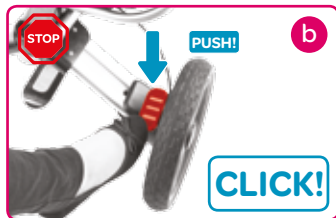
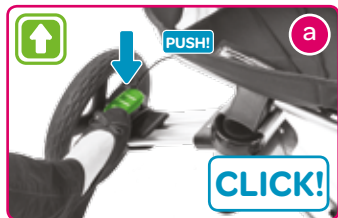
- EN Use
FR Usage
ES Uso
IT Utilizzo
PT Utilização
RU Использование
TR Kullanım
AR الاستخدام



www.bebeconfort.com

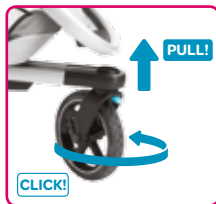
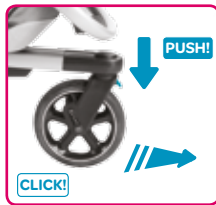


1





2

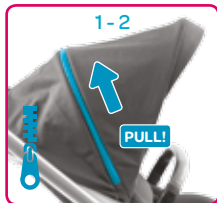




3

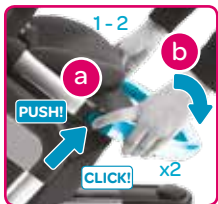


4

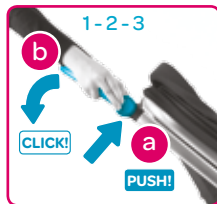




5



6







- EN Rearward facing position
- FR Position dos route
- ES Posición en el sentido contrario a la marcha
- IT Posizione fronte mamma
- PT Posição voltada para a retaguarda
- RU Размещение ребенка
- TR Geriye dönük konum
- AR وضعية مواجهة الخلف



www.bebeconfort.com

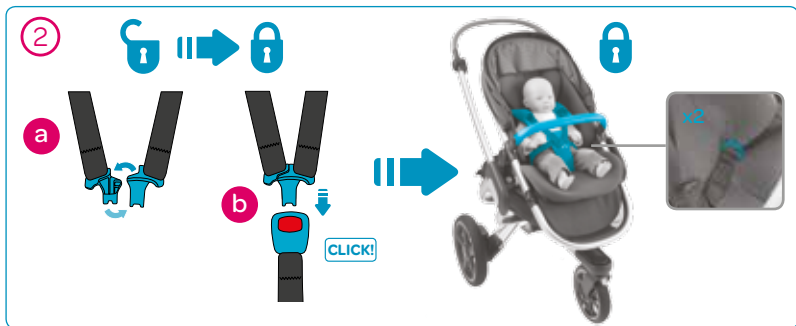




- EN Child installation
- FR Installation de l'enfant
- ES Instalación del niño
- IT Accomodare il bambino
- PT Instalação da criança
- RU Размещение ребенка
- TR Çocuğun yerleştirilmesi
- AR تعليمات تثبيت الطّفّل

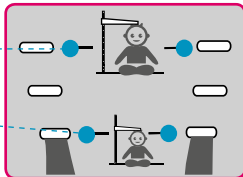


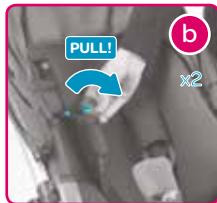
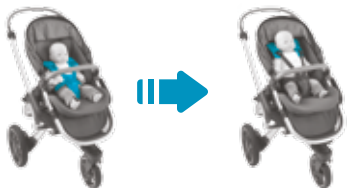
www.bebeconfort.com





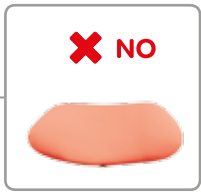
3







4

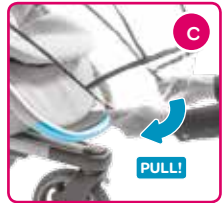
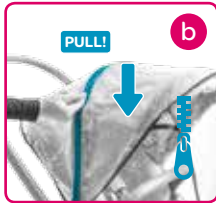
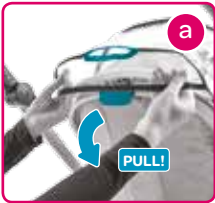
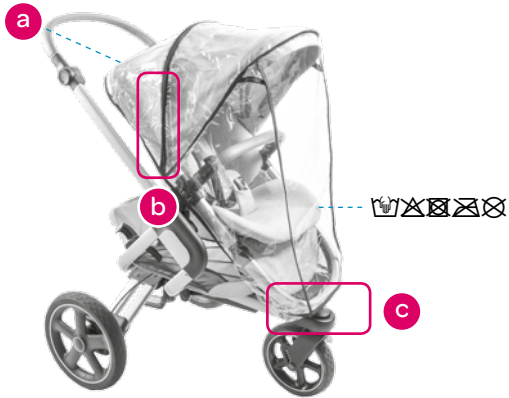




- EN Bag content
- FR Inclus dans le sac
- ES Contenido de la bolsa
- IT Contenuto della confezione
- PT Incluído no saco
- RU Содержимое пакета
- TR Çanta İçeriği
- AR محتوى الحقيبة



www.bebeconfort.com

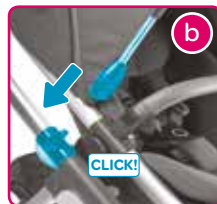
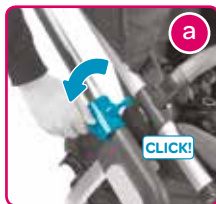


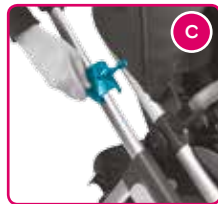
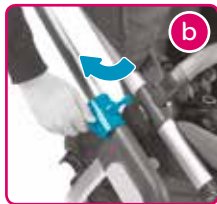
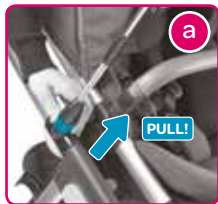


- EN Accessories sold separately
- FR Accessoires vendus séparément
- ES Accesorios que se venden por separado
- IT Accessori venduti separatamente
- PT Acessórios vendidos separadamente
- RU Аксессуары продаются отдельно
- TR Aksesuarlar ayrı satılır
- AR الملحقات المباعة بشكل منفصل



www.bebeconfort.com





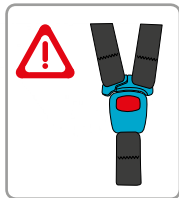


0M-6M





6 M / Max 15 kg







- EN Stroller + carrycot
FR Poussette + nacelle
ES Cochecito + capazo
IT Passeggino + navicella
PT Carrinho + alcofa
RU Коляска + переносная колыбель
TR Puset + port bebe
AR عربة أطفال + سرير أطفال محمول



www.bebeconfort.com



Amber



Oria



Compact
Safety
Carrycot







①



②





3



4





- EN Stroller + car seat
- FR Poussette + si ge auto
- ES Cochecito + silla de auto
- IT Passeggino + seggiolino auto
- PT Carrinho + cadeira auto
- RU Коляска + автокресло
- TR Puset + oto g venlik koltuđu
- AR عربة الأطفال + كرسي أوتوماتيكي للرضع



www.bebeconfort.com



Rock



Citi



Pebble



Pebble Plus



CabrioFix







①



②







EN Washing

FR Lavage

ES Lavado

IT Lavaggio

PT Lavagem

RU Чистка

TR Yıkama

AR تعليمات الغسل



www.bebeconfort.com





DOREL FRANCE S.A.S.
Z.I. - 9 bd du Poitou
BP 9005
49309 Cholet Cedex
FRANCE

DOREL BELGIUM
BITM Brussels
International Trade Mart
Atomiumsquare, 1
BP 177
1020 Brussels
BELGIQUE / BELGIE

DOREL U.K.
Imperial Place, 4
Maxwell Road
Borehamwood
Hertfordshire WD6 1JN
UNITED KINGDOM

DOREL GERMANY
Augustinusstraße, 9 c
D-50226
Frechen-Königsdorf
DEUTSCHLAND

DOREL NETHERLANDS
Postbus 6071
5700 ET Helmond
NEDERLAND

DOREL ITALIA S.P.A.
a Socio Unico
Via Verdi, 14
24060 Telgate (Bergamo)
ITALIA

DOREL HISPANIA S.A.U.
Edificio Barcelona
Moda Centre Ronda Maiols,
1 Planta 4ª,
Puerta 401 - 403 - 405
08192 Sant Quirze del Vallès
ESPAÑA

DOREL PORTUGAL
Rua Pedro Dias, 25
4480-614 Rio Mau (VDC)
PORTUGAL

DOREL SWITZERLAND S.A.
Chemin de la Colice, 4
1023 Crissier
SWITZERLAND / SUISSE

DOREL POLSKA
Innowacyjna, 8
41-208 Sosnowiec
POLAND

