



FIA EUROPEAN HISTORIC RALLY CHAMPIONSHIP

29. HISTORIC VLTAVA RALLYE

7. – 8. 5. 2021

SUPPLEMENTARY REGULATIONS

INDEX

1 INTRODUCTION.....	2
2 ORGANISATION.....	2
3 PROGRAMME	5
4 ENTRIES	7
5 INSURANCE.....	9
6 ADVERTISING & IDENTIFICATION	10
7 TYRES.....	10
8 FUEL	11
9 RECONNAISSANCE	11
10 ADMINISTRATIVE CHECKS	13
11 SCRUTINEERING, MARKING AND SEALING	13
12 OTHER PROCEDURES.....	15
13 IDENTIFICATION OF OFFICIALS.....	16
14 PRIZES	16
15 FINAL CHECKS AND PROTESTS	16
APPENDIX 1 – ITINERARY	17
APPENDIX 2 – RECONNAISSANCE SCHEDULE	19
APPENDIX 3 – COMPETITORS’ RELATIONS OFFICERS.....	21
APPENDIX 4 – COMPETITION NUMBERS AND ADVERTISING	22
APPENDIX 5 – CHAPTER III DRIVERS’ EQUIPMENT OF APPENDIX L.....	23
APPENDIX 6 – UNIFORM GPS MONITORING SYSTEM ONI®	24



1. INTRODUCTION

1.1 GENERAL

This rally will be run in compliance with the FIA International Sporting Code and its appendices including Appendix S, the 2021 FIA EHRC Sporting Regulations, the National Sporting Regulations which comply with the FIA regulations and these Supplementary Regulations.

Modifications, amendments and/or changes to these Supplementary Regulations will be announced only by numbered and dated Bulletins (issued by the organiser or the stewards)

Competitors, drivers, teams, officials and other staff are obliged to follow all regulations and arrangements related to COVID 19 virus set by the Ministry of Health. Details will be specified in a bulletin which will be send with the confirmation of the entries.

The 2021 FIA EHRC Sporting Regulations can be found at: www.fia.com/historic-regulations

1.2 ROAD SURFACE

Tarmac – 96,9 %

Gravel – 3,1 %

Gravel surface is reinforced, there is no increased risk of puncture, it is possible to pass these sections on tarmac tires.

1.3 OVERALL SS DISTANCE AND TOTAL DISTANCE OF THE RALLY

Total Special Stage Distance	135,08 Km
Total Rally Distance	505,96 Km
Number of Special Stages	12
Number of Sections	4
Number of Legs	2

2. ORGANISATION

2.1 TITLES FOR WHICH THE RALLY COUNTS:

FIA TITLES

FIA European Historic Rally Championship for Drivers and Co-Drivers

FIA Trophy for EHRC Teams

Other titles:

Nordic cup

2.2 VISA NUMBERS

FIA: **2EHRC/210408** issued on: **8. 4. 2021**

ASN: **HA00121** issued on: **29. 3. 2021**



2.3 ORGANISER'S NAME / ADDRESS AND CONTACT DETAILS

Name: Pošumavský auto moto klub v AČR
Address: Dobrovského 154, 339 01 Klatovy
Tel: + 420 376 310 180, + 420 728 110 486
E-mail: autoklub@pamk.cz
Web: <http://www.pamk.cz/category/en/>

2.4 ORGANISATION COMMITTEE

Chairman	Jan Petrů
Member	Jiří Valenta
Member	Jiří Nejd
Member	MUDr. Milan Procházka
Member	Petr Rath
Member	Jan Suda
Member	Milan Pošpíšil
Member	Petr Kubíni
Member	Zdeněk Weber
Member	Miroslava Neubauerová
Member	Josef Rubáš
Member	Pavel Štípek
Member	Pavel Ausperger

2.5 STEWARDS

Chairperson (appointed by the FIA)	Rod Parkin (GBR)
FIA Steward (appointed by the FIA)	Jaroslav Novorol (POL)
ASN Steward	Stanislav Minářík (CZE)
Secretary to the Stewards	Jan Mochan (CZE)

2.6 FIA DELEGATES AND OBSERVER

FIA sporting delegate	Arnaud Crépin
FIA observer	Paavo Virtanen
Assistant to FIA observer	John Millington
FIA eligibility delegate	Pat O'Dowd
Assistant to FIA eligibility delegate	Petteri Sappinen
FIA media delegate	Jeff Carter

2.7 SENIOR OFFICIALS

Clerk of the Course	Jiří Nejd
Deputy Clerk of the Course	Alexandra Weberová
Deputy Clerk of the Course/Chief Safety Officer	Petr Kubíni
Route manager	Josef Rubáš
Secretary of the Rally	Tereza Sýkorová
Chief Rescue Officer	Zdeněk Cirman
Chief Medical Officer	MUDr. Milan Procházka
Chief Scrutineer	Martin Svoboda
Press Officer	Alexandra Weberová
Chief of Results System	RECCO Luboš Šperka
Chief Timekeeper	Svatobor Saller
Competitors' Relations Officer	Pert PLUTO Linhart
Competitors' Relations Officer	Petra Mynářová
Service Park Manager	Jan Richard Petrů
GPS System Officer	Václav Štípek



2.8 HQ LOCATION AND CONTACT DETAILS

Rally HQ location from 4.5.2021 until 9.5.2021

Rozvojová zóna Janovice nad Úhlavou
Service area Janovice nad Úhlavou
Tel.: + 420 728 110 486
GPS: N49°3331458', E13°2095186'

Rally HQ opening hours:

Tuesday – 4.5.2021	17:00 – 19:00
Wednesday – 5.5.2021	08:00 – 20:00
Thursday – 6.5.2021	08:00 – 20:00
Friday – 7.5.2021	08:00 – 23:59
Saturday – 8.5.2021	07:00 – 23:00
Sunday – 9.5.2021	07:00 – 13:00

2.9 OFFICIAL NOTICE BOARD LOCATION

The ONB is located in Rally HQ, Service area Janovice nad Úhlavou
GPS: N49°3331458', E13°2095186'

Virtual Notice Board (VNB) is online at <http://www.pamk.cz/official-notice-board/>

2.10 LOCATION OF PARC FERMÉ

Location: Rozvojová zóna Janovice nad Úhlavou
Service area Janovice nad Úhlavou
GPS: N49°3331458', E13°2095186'
Date: 7.5.2021 – 9.5.2021

2.11 LOCATION OF SERVICE PARK AND TRAILER PARK

Location: Rozvojová zóna Janovice nad Úhlavou
Service area Janovice nad Úhlavou
GPS: N49°3331458', E13°2095186'

Opening hours:

5.5.2021 – 08:00 until 9.5.2021 – 12:00

2.12 MEDIA CENTRE OPENING HOURS

2.12.1. Media Centre

Location: Rozvojová zóna Janovice nad Úhlavou
Service area Janovice nad Úhlavou
GPS: N49°3331458', E13°2095186'

Opening hours:

Friday – 7.5.2021 08:00 – 23:59
Saturday – 8.5.2021 08:00 – 20:00



2.13 MAIN GPS COORDINATES

Rally HQ and Media Centre	N49°3331458', E13°2095186'
Ceremonial Start and Podium Finish	N49°3951956', E13°2934717'
Pre-Event Scrutineering	N49°1980450', E13°1243252'
Final Scrutineering	N49°3908036', E13°2757706'
Start Shakedown Stage	N49°3882986', E13°2490350'
Parc Fermé	N49°3331458', E13°2095186'
Service Park	N49°3331458', E13°2095186'

3. PROGRAMME

3.1 PROGRAMME BEFORE THE RALLY WEEK

26.3.2021 - Friday		
13:00	Publishing of the Supplementary Regulations, entries open	www.pamk.cz
25.4.2021 - Sunday		
20:00	Closing date for Media accreditation	www.pamk.cz
26.4.2021 - Monday		
23:59	Closing date for entries Closing date for order of extra services in Service Park, additional space, consecutive Service areas	www.pamk.cz petru@pamk.cz autoklub@pamk.cz
27.4.2021 - Tuesday		
20:00	Original Entry Form must reach the Organiser	Permanent Secretariat
29.4.2021 - Thursday		
20:00	Publication of Entry List	www.pamk.cz

3.2 PROGRAMME DURING THE RALLY WEEK

Tuesday – 4.5.2021		
17:00 – 19:00	Rally HQ open	Rally HQ, Service area Janovice nad Úhlavou
17:00 – 19:00	Registration for Reconnaissance Administrative Checks Collection of Road Book, route map and other documents	Service area Janovice nad Úhlavou
Wednesday – 5.5.2021		
08:00 – 20:00	Rally HQ open	Rally HQ, Service area Janovice nad Úhlavou
08:00 – 10:00	Registration for Reconnaissance Administrative Checks Collection of Road Book, route map and other documents	Service area Janovice nad Úhlavou
08:00 – 23:59	Service Park open Trailer Park open	Service area Janovice nad Úhlavou
08:00 – 20:00	Reconnaissance	See Schedule App 2
Thursday – 6.5.2021		
08:00 – 20:00	Rally HQ open	Rally HQ, Service area Janovice nad Úhlavou



08:00 – 20:00	Reconnaissance	See Schedule App 2
08:00 – 23:59	Service Park open Trailer Park open	Service area Janovice nad Úhlavou
16:30 – 19:00	Administrative checks	ARBO, spol. s.r.o., Service area Janovice nad Úhlavou, GPS: N 49°19.81495', E 13°12.44783'
17:00 – 19:30	Scrutineering Collection of recce trackers - ONI® tracking system	ARBO, spol. s.r.o., Service area Janovice nad Úhlavou
20:00	First Stewards' Meeting	Rally HQ, Service area Janovice nad Úhlavou
21:00	Publication of Start List for Leg 1	Official Notice board, VNB
Friday – 7.5.2021		
08:00 – 23:59	Rally HQ open Service Park open Trailer Park open Media Centre open	Rally HQ, Service area Janovice nad Úhlavou
08:00 – 12:00	Reconnaissance	See Schedule App 2
10:30 – 12:30	Optional Shakedown Poborovice – Dolní Lhota, dist. 2,38 km	Start - Poborovice, N49°3882986', E13°2490350'
15:45	Start order selection for Leg 1	Official Notice board, VNB
15:45	Start Leg 1 Section 1 / TC 0	Podium, square Míru, Klatovy, N49°3951956', E13°2934717'
21:59	Finish Leg 1 / TC5C	Service area Janovice nad Úhlavou
23:30	Publication of Start List for Leg 2	Official Notice board, VNB
Saturday – 8.5.2021		
07:00 – 23:00	Rally HQ open	Rally HQ, Service area Janovice nad Úhlavou
00:00 – 23:00	Service Park open Trailer Park open	Service area Janovice nad Úhlavou
06:15 – 06:45	Scrutineering of restarting cars	Parc Fermé, Service area Janovice nad Úhlavou
07:45	Start of Leg 2 / TC 5D	Parc Fermé, Service area Janovice nad Úhlavou
08:00 – 20:00	Media Centre open	Media Centre, Service area Janovice nad Úhlavou



17:16	Podium Ceremony	Podium, square Míru, Klatovy, N49°3951956', E13°2934717'
17:30	Final Scrutineering	AUTO NEJDL s.r.o., Domažlické předměstí 610, 339 01 Klatovy, N49°3913822', E13°2757447'
17:30	Parc Fermé after finish	Service area Janovice nad Úhlavou
19:30	Publication of Provisional Final Classification	Official Notice board, VNB
20:30	Prize-Giving	Refektář jezuitské koleje, N49°23.66288', E13°17.47703'
Sunday – 9.5.2021		
08:00	Opening hour of Parc Fermé	Service area Janovice nad Úhlavou
12:00	Closing hour of Parc Fermé	Service area Janovice nad Úhlavou

4. ENTRIES

4.1 CLOSING DATE FOR ENTRIES

26.4.2021 – Monday

23:59

4.2 ENTRY PROCEDURE

4.2.1 Anyone wishing to take part in the 29. HISTORIC VLTAVA RALLYE must use the **FIA Online Registration Platform**.

All crews who wish to score points in the EHRC must make their entries by using the standard entry form for their championship available in the FIA application at: <https://registrations.fia.com/EHRC>

4.2.2 Any other crews who are not registered in the EHRC and who are therefore not wishing to collect points in the EHRC, must use and send the entry form available at https://registrations.fia.com/EHRC_3CZE duly completed before the closing date of entries.

Please note that the FIA registration platform requires a user ID and a password to access the entry system. The FIA will need time to register you in the system and open your user account. Please do not wait until the last moment to make your entry in order not to miss the entry closing date.

4.2.3 Acceptance of Entry Form

The entry application will only be accepted if duly completed and accompanied by the bank transfer of the total amount of the entry fee to the Organiser's bank account.



4.3 NUMBER OF ENTRIES ACCEPTED AND CLASSES

4.3.1 The maximum number of entries accepted will be 70. If more than 70 entries are received, the Organisers reserve the sole right to decide which entries among the EHRC non-registered drivers will be accepted.

4.3.2 Cars eligible to enter the event

Cars complying with FIA EHRC Sporting Regulations Art.12 are eligible.

4.3.3 Classes of cars

CATEGORIES	CLASSES	
Category 1 Road legal cars built between 1/1/1931 and 31/12/1957 and Touring and GT cars, models homologated between 1/1/1958 and 31/12/1969.	A1	up to 1000cm ³ (before 31/12/1961)
	A2	from 1001cm ³ to 1600 cm ³ (before 31/12/1961)
	A3	over 1600cm ³ (before 31/12/1961)
	B1	up to 1000cm ³ (after 31/12/1961)
	B2	from 1001cm ³ to 1300cm ³ (after 31/12/1961)
	B3	from 1301cm ³ to 1600cm ³ (after 31/12/1961)
	B4	from 1601cm ³ to 2000cm ³ (after 31/12/1961)
Category 2 Touring (T), Competition Touring (CT), Grand Touring (GT) and Competition Grand Touring (GTS) cars of Groups 1, 2, 3 and 4, models homologated between 1/1/1970 and 31/12/1975.	C0	up to 1150cm ³
	C1	from 1151cm ³ to 1300cm ³
	C2	from 1301 cm ³ to 1600cm ³
	C3	from 1601 cm ³ to 2000cm ³
	C4	over 2000cm ³
Category 3 Touring (T), Competition Touring (CT), Grand Touring (GT) and Competition Grand Touring (GTS) cars of Groups 1, 2, 3 and 4, models homologated between 1/1/1976 and 31/12/1981.	D0	up to 1150cm ³
	D1	from 1151cm ³ to 1300cm ³
	D2	from 1301cm ³ to 1600cm ³
	D3	from 1601cm ³ to 2000cm ³
	D4	over 2000cm ³
Category 4 Touring (T), Competition Touring (CT), Grand Touring (GT) and Competition Grand Touring (GTS) cars of Groups A, B and N, models homologated between 1/1/1982 and 31/12/1985 (Period J1) and models homologated between 1/1/1986 and 31/12/1990 (Period J2).	E1	Group A up to 1300cm ³
	E2	Group A from 1301cm ³ to 1600cm ³
	E3	Group A from 1601cm ³ to 2000cm ³
	E4	Group A over 2000cm ³
	E5	Group B up to 1600cm ³
	E6	Group B over 1600cm ³
	E7	Group N up to 1600cm ³
	E8	Group N over 1600cm ³



4.4 ENTRY FEES

The entry fees for the Competition are fixed at € 1.050 per car.

4.4.1 Entry packages

The entry fee includes:

- road book and other documents for the crew
- identification for 1 competition car
- identification for 2 assistance service car "SERVICE"
- identification for 4 mechanics
- installation and rent of GPS monitoring system (only for FIA European Historic Rally Championship)
- tickets for driver & co-driver and 3 persons (ceremonial price giving on 8.5.2021) – other tickets can be bought by € 30 only on the Registration for Reconnaissance.

4.5 PAYMENT DETAILS

The entry will only be accepted if accompanied by the total entry fees.

beneficiary name: Posumavsky auto moto klub v ACR
address: Dobrovskeho 154, 33901 Klatovy, Czech republic

IBAN: CZ5520100000002700361535, BIC: FIOBCZPPXXX

4.6 REFUNDS

Entry fees will be refunded in full:

- a) to candidates whose entry has not been accepted:
- b) in the case of the Rally not taking place.

The organiser will refund minimum 80 % of the entry fee to those competitors who for reason of "force majeure" were unable to start in the event.

5. INSURANCE

The organiser has contracted an insurance guaranteeing the Third Party Civil Liability (via broker PLATINUM Consulting, s.r.o) and provides the insurance at the price of € 100 (included in entry fee). The general insurance policy includes insurance of participants' vehicles against damage caused to third parties up to CZK 10,000,000 per participant and will be increased to € 10,000,000. Insurance cover will come into effect from the start and will cease at the end of the Rally or at the moment of withdrawal, disqualification or exclusion of the Competitor. The insurance policy covers the car against the damage caused to third party. However the damage caused by competitors among themselves is not covered by the contract. The insurance for organizers and participants is made with an integral excess of € 200. It means that damage up to € 200 won't be refunded and damage over € 200 will be covered without the complicity of insured. Further insurance details to be communicated via an Official Addendum or Bulletin. Insurance cover will come into effect from the start and will cease at the end of the Rally or at the moment of withdrawal or disqualification of the Competitor.

In case of accident, the competitor or his representative must notify the clerk of the course within 24 hours.

On arrival at each leg the competitor must sign a declaration concerning any accident he may have had on route.



6. ADVERTISING & IDENTIFICATION

Must comply with the Article 2.1.9 of Appendix K.

7. TYRES

7.1 NUMBER OF TYRES & TYRE MARKING PROCEDURE

7.1.1 Eligible tyres

All tyres used for rally stages on tarmac and road sections must be marked «E» or «DOT» in accordance with the appropriate standard of the country in which the Competition is taking place. They must have a minimum external diameter corresponding to the period in question (see Article 8.4.2 of Appendix K) and they must not be marked «*Not for highway use*» nor «*For Racing Only*» nor imply any indication limiting, specifying or recommending a use in competition. Any alteration, modification or adaptation (which for the avoidance of doubt includes cutting of additional grooves) of tyres other than wear through normal use is forbidden. For stages run on gravel, and so declared by the clerk of the course, no «E» or «DOT» tyre marking is necessary.

a) Cars of Category 1: During Competitions classed as tarmac event (i.e. excluding gravel or snow Competitions) there shall be **a maximum of 14 tyres permitted**. Tyres must be uniquely identified with a barcode (or such other method as may be prescribed) and registered with the FIA eligibility delegate before the start of the Competition. Checks for compliance with this regulation may be undertaken at any time during the Competition and any discrepancies will be reported to the stewards. A detailed information sheet will be available before each Competition.

b) Cars of Category 2, 3 and 4: During Competitions classed as tarmac (i.e. excluding gravel or snow Competitions) there shall be **a maximum of 10 tyres said «dry» permitted**. Tyres must be uniquely identified with a barcode (or such other method as may be prescribed) and registered with the FIA eligibility delegate before the start of the Competition.

Due to the lack of availability of «wet» tyres in their appropriate sizes, the cars listed as exceptions in the appendix to the FIA authorized wet tyre list may register a maximum of 14 tyres before the start of the Competition. Thus there is no allowance for additional «wet» tyres.

Checks for compliance with this regulations may be undertaken at any time during the Competition and any discrepancies will be reported to the stewards. The number of «wet» tyres is not limited. Only the «wet» tyres as per the FIA authorised tyre list can be used. A detailed information sheet will be available before each Competition.

7.1.2 Tyre marking is obligatory for all the competitors.

All tyres must have a specific barcode number supplied by the 2021 FIA-approved barcode supplier. All tyres must be registered with the FIA Eligibility delegate before the start of the rally, at pre-event scrutineering.

The cars must be presented at the tyre Marking Zone with their spare wheels placed with the outer part of the rim on top, and if needed, unfastened, to facilitate the procedure. Following the marking, and before the cars departure from the tyre marking area, crews, or their team member, must properly fasten the spare wheels as required.

For Competitors taking part in the Shakedown, tyres used for the Shakedown will not be marked.

7.1.3 Tyre Marking during the rally

A wheel/tyre marking / barcode reading zone may be established at the exit of the authorised service parks or remote service zones and at the start of a stage.



The crew has to stop its car and wait for the instructions of the scrutineers and/or marshal. In the absence of scrutineers or marshals, the crew may leave the zone without stopping. A tyre mark checking zone may be established at the entrance of the authorised service parks and remote service zones.

7.1.4 Means of control

Checks for compliance with this regulation may be undertaken at any time during the rally and any discrepancies will be reported to the stewards. A detailed information sheet will be available before each rally.

7.2 TYRES USED FOR RECONNAISSANCE

Only E- or DOT-approved homologated road legal tyres are allowed. Retreated tyres are forbidden for reconnaissance. Any treatment (ie. removing or damaging) on road tyres side markings or texts is not allowed.

7.3 NATIONAL LAWS OR SPECIAL REQUIREMENTS

Not applicable.

8. FUEL

8.1 FUEL RESTRICTIONS

It is mandatory for participants to use Fuel in accordance with FIA Appendix K Article 3.9.

8.2 REFUELLING

8.2.1 All Competitors may only refuel in a Refuelling Zone as indicated in the Road Book.

Competitors' cars may be refuelled directly from fuel pump from drums/cans with commercially available fuel and two team members with team passes may access the RZ to assist each crew. The relevant personnel must be wearing clothing which will provide adequate protection against fire. Refuelling and fuel handling must be performed in accordance with environmental protection. Refuelling during the rally must be done in RZ only.

8.2.2 Refuelling procedure

The complete refuelling procedure must be in compliance with Article 61.2 of the FIA EHRC Sporting Regulations.

9. RECONNAISSANCE

9.1 PROCEDURE FOR REGISTRATION

Reconnaissance registration will take place as follows:

Date: Tuesday – 4.5.2021	17:00 – 19:00
Wednesday – 5.5.2021	08:00 – 10:00

Location: Service area Janovice nad Úhlavou, GPS coordinates: N49°3331458', E13°2095186'

Reconnaissance material will be issued upon collection of the Road Book.

Upon Reconnaissance registration, it is possible to complete administrative checks.

9.1.1 Registration form

Not applicable.

9.1.2 Checking of Reconnaissance cars

Reconnaissance cars will be checked during reconnaissance by ONI® tracking system for reconnaissance. See APPENDIX 6. (page 25) for information on ONI® tracking system for reconnaissance.

The ONI® tracking system units will be returned to the Media Centre no later than Friday – 7.5.2021 to 13:00.

Reconnaissance cars must comply with Art.25.1 of FIA RRSR.



If, for any reason, a crew is forced to replace the reconnaissance car during the reconnaissance, the Secretariat (phone: +420 728 110 486) must be informed about the details of the new reconnaissance car. Failure to follow this procedure will result in refusal to participate in the reconnaissance.

9.1.3 Reconnaissance identification

The crew will receive identification for their car (1 windscreen sticker and 2 number stickers). The windscreen sticker must be fixed to the top right of the front windscreen and 2 number stickers rear both side window during reconnaissance at all the times.

Reconnaissance cards will not be issued, the Reconnaissance cars will be checked during reconnaissance by ONI® tracking system. The ONI® tracking system unit must be carried in the reconnaissance vehicle.

9.2 RALLY-SAFETY-TRACKING-SYSTEM

Rally safety tracking system is provided by ONI® tracking system

Manuals and other information: www.onisystem.cz/rally

9.2.1 Safety tracking deposit

No deposit will be necessary for the GPS – Safety – Tracking system fitting.

9.3 RECONNAISSANCE TIME SCHEDULE

Reconnaissance Time Schedule is given in Appendix 2.

9.4 RECONNAISSANCE RULES

The crews are obliged to follow all reconnaissance rules specified in FIA EHRC Sporting Regulations and these Supplementary Regulations.

9.4.1 Reconnaissance

Reconnaissance will be organised in compliance with art. 35 of FIA EHRC Sporting Regulations and only series production cars conforming to art. 35.1 of FIA EHRC Sporting Regulations must be used.

9.4.2 Speed limit (Art. 34.2 of FIA EHRC Sporting Regulations):

The maximum speed set for the reconnaissance of the SS is 80 km/h, except for those areas in which there are speed limit signs or in built-up areas (50 km/h) or other limitations marked in the Road Book.

9.4.3 Direction

Each crew may drive the Special Stages in the direction of the rally.

Driving in the opposite direction during reconnaissance is allowed on: SS 7/10 only on the road No. 1719 from the destination SS to the turning from the gravel section towards the village Chlistov, SS 9/12 only when passing through the village of Strašín.

The crews must always enter and leave the Special Stages through the start and stop controls.

9.4.4 Restriction of reconnaissance

Any driver, or his co-driver, or any other team member who has entered or intends to enter the rally and who wishes to drive 3 months ahead the rally on any road which is or might be used as a Special Stage in that rally, may only do so after he has obtained written permission from Clerk of the Course. Failure to respect this rule shall result in the driver being reported to the Stewards.

9.4.5 Number of persons on board

During each passage through a Special Stage, a maximum of 2 persons (the crew) are permitted in the car.

9.4.6 Number of passages

Competitors should have the opportunity to pass a minimum of 2 times and a maximum of 3 times through each special stage.



9.4.7 Illegal reconnaissance

Illegal reconnaissance performed out of the official time schedule or performing more passages than permitted will be reported to the stewards.

9.4.8 Speeding

Speeding will be penalized according to the Art. 34.2 of FIA EHRC Sporting Regulations.

Speeding during reconnaissance will incur a fine applied by the clerk of the course as follows - per km per hour over the speed limit: **all drivers 25 EUR.**

The fine will be doubled in case of a second offence committed during reconnaissance.

Speeding during reconnaissance will be checked by GPS system.

9.4.9 Radar detection equipment

The fitting or carrying of radar detection equipment during reconnaissance is not permitted. Infringements will be reported to the stewards.

10. ADMINISTRATIVE CHECKS

10.1 DOCUMENTS TO BE PRESENTED

At Administrative Checks the following documents will be checked and entry form details verified:

- Competitor's license
- Driver and Co-driver competition licenses
- Driver and Co-driver valid driving licence
- ASN authorisation (mandatory for all foreign Competitors and/or drivers)
- Completion of all details on the entry form
- Valid personal accident insurance of non-EU drivers
- Car registration papers
- Valid car's HTP

10.2 TIMETABLE

Administrative Checks will take place as follows:

Date: Thursday – 6.5.2021 at 16:30 – 19:00

Location: ARBO, spol. s.r.o., Service area Janovice nad Úhlavou, GPS: N 49°19.81495', E 13°12.44783'

Administrative Checks can also be done by Registration for Reconnaissance at Tuesday (4.5.2021) - 17:00 – 19:00, and at Wednesday (5.5.2021) - 08:00 – 10:00.

All Administrative Checks must be completed by 19:00 on Thursday – 6.5.2021 at ARBO, spol. s.r.o., Service area Janovice nad Úhlavou.

Drivers and co-drivers must be present at Administrative Checks.

11. SCRUTINEERING, SEALING AND MARKING

11.1 SCRUTINEERING VENUE AND TIMETABLE

Venue: ARBO, spol. s.r.o., Service area Janovice nad Úhlavou, GPS: N 49°19.81495', E 13°12.44783'

Date: Thursday – 6.5.2021 at 17:00 – 19:30

The detailed timetable for pre-rally scrutineering will be published in a Bulletin.



Any crew taking part in the rally, or their representative must arrive at the Scrutineering and present the car in accordance with the timetable to be issued in a Bulletin. **Any lateness entering to pre-rally Scrutineering area will be sanctioned with a fine of 50 EUR for each 10 minutes delayed.** Drivers and Co-drivers are not required to attend Scrutineering.

The cars must be fully prepared and ready for all necessary sealing and marking (Art 16.1.2 FIA EHRC Sporting Regulations), (if the car is not prepared for the sealing, the car will not be authorized to access to the Scrutineering and fine for lateness will be applicable):

- compressor (turbocharger) and the spare one for all compressor equipped cars;
- The dismantled underbody protectors must be kept with the car weight checks.
Sealing wires must be installed according to the instructions given at a later date.

11.2 DOCUMENTS TO BE PRESENTED AT SCRUTINEERING:

- Vehicle registration document, when it's applicable;
- power of attorney or letter of permission from the owner of the car, if he/she is not one of the drivers;
- Valid vehicle insurance policy (e.g. Green Card);
- **Vehicle original FIA HTP.** In addition, homologation form for roll cage (if homologated) must be with the car at Scrutineering.

The crew must present the FIA HTP to the FIA eligibility delegate who may keep it until the end of the event. If this is not submitted, the car may not start.

11.3 DRIVERS' SAFETY EQUIPMENT

At Scrutineering Competitors must produce all items of protective clothing, underwear, including helmets and a FIA approved head restraint (FHR, formerly called HANS) intended to be used. Compliance with Appendix L Chapter III will be checked. The use of FHR in Category 1 is recommended but not mandatory. Any infringement will be penalised by the Stewards.

The use of driver's safety equipment may be checked at any time.

11.4 INSTALLATION OF SAFETY TRACKING SYSTEM

ONI® tracking system will be installed to every rally car before scrutineering in ARBO, spol. s.r.o., Service area Janovice nad Úhlavou, GPS: N 49°19.81495', E 13°12.44783', at Thursday 6.5.2021 at 16:30, by the marshals.

In case of withdrawal the tracking system must be returned to the HQ. At the end of the rally, the tracking system will be dismantled by a marshal at the Parc Ferme entrance.

Requirements for installation of SAFETY TRACKING SYSTEM for rally (ONI System) – is used one of the most quality GPS tracking system for rally cars. The requirements for car preparation for installing:

- prepare the power cable to co-driver side (preferably to the co-driver's door)
- the power cable must be fixed to electric site of your car after the main switch (not straight on battery)
- our staff will install the GPS unit and all components before the scrutineering
- they will be on the their place 60 minutes before the start of scrutineering
- installing takes 5 – 10 minutes (it depend to your preparation)
- after the installation of tracking system, you mustn't change the placement of it

If you don't have installed completely GPS tracking system, you cannot allowed to scrutineering. Please, arrive on time.



12. OTHER PROCEDURES

12.1 CEREMONIAL START PROCEDURE

Ceremonial Start procedure

The crews must present the car at the start area square Míru, Klatovy 10 minutes before start time at Friday – 7.5.2021. The start area will be made available at the time scheduled in the programme. Any delay will be penalised with a fine of € 100. The cars will be started at one minute intervals.

12.2 FINISH PROCEDURE

The cars will pass through the Finish Podium TC 12A (square Míru, Klatovy - N49°3951956', E13°2934717') and then will continue in final Parc Ferme (Service area Janovice nad Úhlavou, N49°3338303', E13°2066031').

Selected cars must be driven to the Final Scrutineering by the driver or mechanic.

The Prize-giving will take place in the Refektář jezuitské koleje, N49°23.66288', E13°17.47703', without the cars at Saturday – 8.5.2021 at 20:30.

12.3 PERMITTED EARLY CHECK-IN

Crews are authorised to check-in early without time penalty at:
TC5C, TC 12A, TC 12B and final Parc Fermé – TC 12C

12.4 START PROCEDURE AND ORDER

12.4.1 Starting order and intervals

The start order will according to Article 41 of the FIA EHRC Sporting Regulations.
The interval between each car will be 1 minute.

12.4.2 Start procedure for Special Stages

When the car with its crew on board has stopped in front of the starting control, the marshal will enter the time scheduled for the start of the car in Time card, and he will hand this document back to the crew.

A Start Clock with countdown will be placed in the start line. Cell Beam is located 40 cm in front of the start line.

12.4.3 Re-start after retirement / Catch-up

Re-start will be allowed under all provisions applied in Article 54 of FIA EHRC Sporting Regulations.

Any crew which has failed to complete Leg 1 can re-start the rally from the start of Leg 2 unless if they confirm otherwise to the Clerk of the Course prior to the publication of the start list of Leg 2 on Friday – 7.5.2021 at the latest 22:30.

The restarting car must report to the overnight Parc Fermé prior to Leg 2, on Friday – 7.5.2021 at the latest 23:59. The re-scrutineering will take place at Parc Fermé at 06:15 – 06:45.

12.5 REMOVAL OF CARS FROM THE FINAL PARC FERMÉ

Cars may be removed from final Parc Fermé once the Stewards authorise its opening. Provided that the above takes place as scheduled, all cars must be removed no later than 12:00 on Sunday 9.5.2021.

12.6 OFFICIAL TIME USED DURING THE RALLY

Throughout the rally, the official time will be Central European Time, CET.

12.7 TIME CARDS

12.7.1. At the start of the Rally, each crew will be given a time card, on which the times to cover the distance between time controls will be shown. The time card will be handed in at the finish time control of a section and will be replaced by a new one at the start of the next section. Each crew is solely responsible for their time card.

12.7.2. Upon retiring, a crew must hand in its time card either to a marshal at a time Control or to the sweeping car.



12.8 Circuit Special Stages

In circuit part of the SS 1/6 is the same part taken several times according to the road book. After start to the SS crew passes prescribed number of laps according to the road book. Laps are counted by crew. After circuit part continues standard SS. Crews who not pass all prescribed number of laps will be penalised by 8 minutes per each not finished lap. If the number was exceeded, the real time covered all taken laps will be counted to the crew and crew will be reported to the stewards.

13. IDENTIFICATION OF OFFICIALS AND MEDIA

Official function with text on tabard	Colour of the identification tabard
Stage Commander	Red with text VRZ
Stage Safety Officer	Red with text BRZ
Safety Marshal	Yellow with marking
Competitors' Relations Officer	Orange with text Competitors Relations Officer
Scrutineer	Black
Media	Yellow
Radio Point Marshal	Blue
Judges of fact	Orange
Timekeeper	Yellow with Časoměřič / Timekeeper

14. PRIZES

14.1 PRIZE-GIVING

Date: Saturday – 8.5.2021 at 20:30

Location: Refektář jezuitské koleje, N49°23.66288', E13°17.47703'

The implementation of the Prize-giving ceremony will be specified according to the current epidemiological conditions in the bulletin.

Prizes will be awarded according to the final results of the Rally.

The following cups will be awarded as a minimum to both Driver and Co-driver:

- Winners in each category.
- Winners in each class.

Where there are three or more classified in either category or class, awards for 2nd place will be given. Where there are six or more classified in either category or class, awards for 3rd place will be given.

Prize giving will take place without the cars but the presence of the driver and the co-driver is mandatory.

15. FINAL CHECKS AND PROTESTS

15.1 Final Scrutineering

Date: Saturday – 8.5.2021 at 17:30

Location: AUTO NEJDL s.r.o., Domažlické předměstí 610, 339 01 Klatovy, N49°3913822', E13°2757447'

Competitors who will be selected for final Scrutineering are requested to provide proper equipment (including all sealed spare parts) and mechanics at the Final Scrutineering venue.

Each selected car will be driven to Final Scrutineering by a designated member of the team (who must be present at the finish), and accompanied by an official.

In case of a protest, the said car will be checked at the same venue.



15.2 PROTEST DEPOSIT

The protest deposit is € 1.000 (FIA EHRC Sporting Regulations - Art. 65.2).

If a protest requires the dismantling and re-assembly of different parts of the car, the claimant must pay an additional deposit:

15.2.1 For a protest involving only a clearly defined part of the car (engine, transmission, steering, braking system, electrical installation, body work, etc.): additional deposit € 750 each part of the car.

15.2.2 For a protest involving the whole car: additional deposit € 4,000.

15.3 APPEAL DEPOSIT

The sum for an international appeal deposit (FIA) is: € **3.000**

Jiří Nejd
Clerk of the Course



APPENDIX 1. ITINERARY

29. HISTORIC VLTAVA RALLYE 2021

TIME SCHEDULE / ČASOVÝ HARMONOGRAM

LEG 1 / 1. ETAPA				Friday /pátek 7.5.2021		
SS/RZ TC/ČK	Location Místo	SS dist. RZ délka	Liaison dist. Trať bez RZ	Total dist. Spoj. úsek	Target time Jízdní doba	First car due Čas 1. jezdce
0	START Klatovy, Square / Náměstí Míru	—	—	—		15:45
1	Slavošovice od Bolešín	—	10,15	10,15	0:17	16:02
SS 1	KLATOVSKÝ OKRUH	11,58	—	—		16:05
2	Svrčovec	—	14,56	26,14	0:36	16:41
SS 2	ANDĚLICKÁ	8,69	—	—		16:44
3	Skelná Huť	—	30,16	38,85	0:51	17:35
SS 3	CHUDENÍNSKÁ	8,85	—	—		17:38
3A	Regrouping-IN & Technical zone-IN	—	15,12	23,97	0:33	18:11
Regrouping (Janovice)					0:30	
3B	Regrouping-OUT - Service-IN	—	—	—		18:41
Service A (Janovice, rozvoj.zóna)		(29,12)	(59,84)	(88,96)	0:30	
3C	Service-OUT	—	—	—		19:11
RZ 1	Refuelling - tank.zóna	(17,54)	(61,19)	(78,73)		
4	Svrčovec	—	15,91	15,91	0:30	19:41
SS 4	ANDĚLICKÁ	8,69	—	—		19:44
5	Skelná Huť	—	30,16	38,85	0:51	20:35
SS 5	CHUDENÍNSKÁ	8,85	—	—		20:38
5A	Regrouping-IN & Technical zone-IN	—	15,12	23,97	0:33	21:11
Regrouping (Janovice)					0:03	
5B	Regrouping-OUT - Service-IN	—	—	—		21:14
Service B (Janovice, rozvoj.zóna)		(17,54)	(61,19)	(78,73)	0:45	
5C	Service-OUT - Parc ferme / UP2-IN	—	—	—		21:59

LEG 1 totals	46,66	131,18	177,84
---------------------	--------------	---------------	---------------

Section 1

Section 2



29. HISTORIC VLTAVA RALLYE 2021

TIME SCHEDULE / ČASOVÝ HARMONOGRAM

LEG 2 / 2. ETAPA Saturday / sobota 8.5.2021

SS/RZ TC/ČK	Location Místo	SS dist. RZ délka	Liaison dist. Trať bez RZ	Total dist. Spoj. úsek	Target time Jízdní doba	First car due Čas 1. jezdce
5D	Parc fermé-OUT - Janovice					7:45
5E	Service-IN	—	0,32	0,32	0:03	7:48
Service C (Janovice, rozvoj.zóna)		(0)	(0,32)	(0,32)	0:15	
5F	Service-OUT	—	—	—		8:03
RZ 2	Refuelling - tank.zóna	(27,91)	(45,6)	(73,51)		
6	Slavošovice	—	16,48	16,48	0:31	8:34
SS 6	KLATOVSKÝ OKRUH	12,82	—	—		8:37
7	Boříkovy	—	11,72	24,54	0:34	9:11
SS 7	MLÁZOVSKÁ	7,49	—	—		9:14
8	Keplý	—	14,46	21,95	0:30	9:44
SS 8	KEPLY	7,60	—	—		9:47
RZ 3	Refuelling - tank.zóna Hlavňovice	(22,71)	(82,18)	(104,89)		
9	Pohorsko	—	30,24	37,84	0:58	10:45
SS 9	STRAŠÍNSKÁ	22,71	—	—		10:48
9A	Regrouping-IN & Technical zone-IN	—	54,88	77,59	1:45	12:33
Regrouping (Janovice)					0:30	
9B	Regrouping-OUT - Service-IN	—	—	—		13:03
Service D (Janovice, rozvoj.zóna)		(50,62)	(128,1)	(178,72)	0:30	
9C	Service-OUT	—	—	—		13:33
RZ 4	Refuelling - tank.zóna	(15,09)	(37,25)	(52,34)		
10	Boříkovy	—	19,85	19,85	0:34	14:07
SS 10	MLÁZOVSKÁ	7,49	—	—		14:10
11	Keplý	—	14,46	21,95	0:30	14:40
SS 11	KEPLY	7,60	—	—		14:43
RZ 5	Refuelling - tank. zóna Hlavňovice	(22,71)	(74,35)	(97,06)		
12	Pohorsko	—	30,24	37,84	0:58	15:41
SS 12	STRAŠÍNSKÁ	22,71	—	—		15:44
12A	FINISH KLATOVY	—	47,05	69,76	1:32	17:16
	Target ramp / Cílová rampa		Neutralization / Neutralizace			
12B	Klatovy, square					
12C	Janovice, Parc ferme / UP	—	11,67	11,67	15	

Section 3

Section 4

LEG 2 totals	88,42	239,70	328,12
---------------------	--------------	---------------	---------------

RALLY TOTALS					
LEG ETAPA	No. of SS Počet RZ	SS dist. RZ délka	Liaison dist. Trať bez RZ	Total. dist. Délka celk.	
1	5	46,66	131,18	177,84	26,24%
2	7	88,42	239,70	328,12	26,95%
Overall Totals	12	135,08	370,88	505,96	26,70%



APPENDIX 2. RECONNAISSANCE SCHEDULE

Each crew is limited to 3 passages on each Special Stage.

Special Stages run twice are considered to be one Special Stage.

Driving in the opposite direction during reconnaissance is allowed on: SS 7/10 only on the road No. 1719 from the destination SS to the turning from the gravel section towards the village Chlistov, SS 9/12 only when passing through the village of Strašín.

SS 1 - the first pass of the SS according to the roadbook means three passes of the circuit part, which are considered as three passes of reconnaissance, the second pass is allowed only from the START through the shifting retarder to the STOP. One pass within the reconnaissance of the SS 6 is considered to be the third passage of the stages of the SS from the START through the shifting retarder to the STOP.

SS 6 - passage of SS according to the roadbook means three passes of the circuit part, which are considered as three passes of the SS for reconnaissance, the exit to the STOP stand is allowed only once.

Note the limited speed on SS 9/12 in Kváskovice 30 km / h, SS 7/10 on the gravel section after the village Sluhov in range of 1,2 km – speed limit 50 km/h.

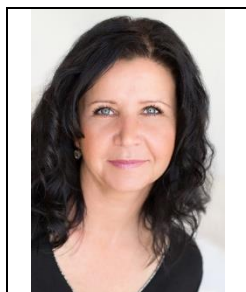
Date	SS	Time
Wednesday 05. 05. 2021	SS 2/4 SS 3/5 SS 7/10 SS 8/11	08:00 – 20:00
Thursday 06. 05. 2021	SS 1	09.00 – 11.00 see in Bulletin
	SS 6	17.00 – 19.00 see in Bulletin
	SS 2/4 SS 3/5 SS 7/10 SS 8/11 SS 9/12 Skakedown	08:00 – 20:00
Friday 07. 05. 2021	SS 2/4 SS 3/5 SS 7/10 SS 8/11 SS 9/12	08:00 – 12:00



APPENDIX 3. COMPETITORS' RELATIONS OFFICERS



NAME: Petr Linhart
Phone: +420 604 733 295
Languages: ENG, CZE



NAME: Petra Mynářová
Phone: +420 775 760 464
Languages: CZE, ENG

The **COMPETITORS' RELATIONS OFFICERS** will be identifiable by a orange tabard with text Competitors Relations Officer.

The CROs will be present at the Administrative Checks, Qualifying Stage, Scrutineering, Opening Ceremony, Service Parks, Start/End of Leg 1 and 2, Regrouping areas and Finish.

Thursday 6.5.2021

- 16:30 – 19:00 Administrative checks
Place: ARBO, spol. s.r.o., Rozvojová zóna 530, Janovice nad Úhlavou
- 17:00 – 19:30 Scrutineering
Place: ARBO, spol. s.r.o., Rozvojová zóna 530, Janovice nad Úhlavou

Friday 7.5.2021

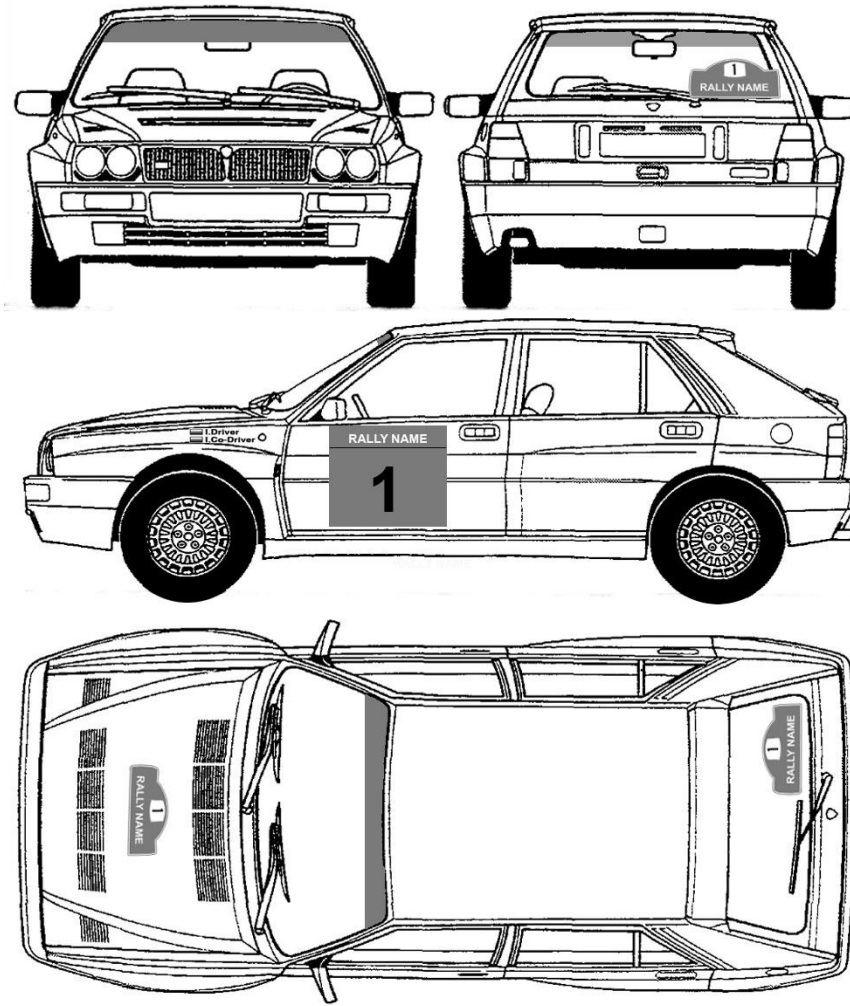
- 15:30 – 16:30 Start of the Rally (TC 0)
Place: square Míru, Klatovy
- 18:00 – 19:00 Regrouping (TC 3A)
Place: Service Area, Janovice nad Úhlavou
- 20:40 – 22:15 Parc Fermé IN (TC 5A)
Place: Service Area, Janovice nad Úhlavou

Saturday 8.5.2021

- 07:30 – 08:30 Start of the Leg 2 (TC 5D)
Place: Service area, Janovice nad Úhlavou
- 12:25 – 13:25 Regrouping (TC 9A)
Place: Service area, Janovice nad Úhlavou
- 17:10 – 18:20 Finish of the Rally (TC 12A)
Place: square Míru, Klatovy
- 19:30 – 20:00 Publication of the Provisional Final Classification
Place: Official Notice Board, HQ, Janovice nad Úhlavou, VNB



APPENDIX 4. COMPETITION NUMBERS AND ADVERTISING



All cars must comply with the Article 2.1.9 of Appendix K.

- **Competition Numbers**

1 – door panels (2 per car): 50 cm x 44 cm

2 – rally plate 45 cm x 23 cm

3 – rear windows 18 cm x 9 cm

- **Optional Advertising – space reserved for Organiser’s advertising**

- In door panels

- **Driver and Co-Driver Names**

The names of the crew plus their national flags must appear on both sides of the wings at the front of the car (max size 10cm x 40cm). Any car failing to comply with this rule shall be subject to a penalty.



APPENDIX 5. CHAPTER III DRIVERS' EQUIPMENT OF APPENDIX L 2021

Flame-Resistant Clothing / Head restraints / Helmets (FIA ISC, Appendix L, Chapter III, articles 1, 2 and 3)

• FLAME-RESISTANT CLOTHING

All drivers and co-drivers must wear overalls as well as gloves (optional for co-drivers), long underwear, a balaclava, socks and shoes homologated to the FIA 8856-2000 standard, (Technical List N°27) and FIA 8856-2018 standard (Technical List N°24).

Users must ensure that garments are not too tight, as this reduces the level of protection.

Embroidery sewn directly onto the overalls shall be stitched onto the outermost layer only, for better heat insulation. Backing material of badges and thread used for affixing them to the overalls must be flameproof (see Appendix 1 of the FIA 8856-2000 Standard for detailed requirements and instructions for use).

• FRONTAL HEAD RESTRAINT (FHR)

The use of frontal head restraints, homologated according to the FIA 8858-2010 or 8858-2002 standard is mandatory for all drivers / co-drivers of Categories 2 / 3 / 4 and recommended for drivers and co-drivers of Category 1. Homologated FHR systems are listed in the FIA Technical List N° 29.

Conditions of use

FHR systems must be worn only with FIA-approved items according to the following chart:

Helmet (2)	Tether system (tether, tether end fitting and helmet anchorage)
FIA 8860-2018 (Technical List N° 69) FIA 8860-2010 (Technical List N° 33) FIA 8858-2010 (Technical List N° 41) FIA 8859-2015 (Technical list N° 49)	FIA 8858 (Technical List N° 29)

(2) Mandatory wearing of helmets in each championship according to Appendix L, Chapter III, Article 1.1.

• HELMETS

All drivers must wear crash helmets that meet one of the standards in FIA Technical List N°25, but are also compatible with FHR system (FIA 8858-2010 or 8858-2002 standard) and are thus contained in FIA Technical Lists N°33 and 41. However, it is strongly recommended, that they wear helmets meeting the FIA 8860-2004 or 8860-2010 - Advanced Helmet Test Specification (FIA Technical List N°33) standard.

Clothing and equipment will be checked at Scrutineering and at any other time during the rally.

Drivers' clothing and equipment apply to the Shakedown, as well.



APPENDIX 6. UNIFORM GPS MONITORING SYSTEM ONI®

1. General provisions

All competition cars have to be obligatorily equipped with the ONI® tracking system. ONI® tracking system is owned by the Autoclub of the Czech Republic and will be rented to the competitors. Eventual destruction, non-return or damage of the unit has to be paid for by the competitor to the provider in accordance with the applicable price list. In case of non-returning GPS tracking system immediately after the event, the fine 150 euro will be imposed to the competitor.

2. Distribution of the ONI® tracking system

ONI® tracking system contains following parts:

- tracking unit with display
- tracking unit holder
- power supply cable
- combined antenna roof
- control panel containing:
 - OK button to cancel the alarm / confirm red flag
 - SOS switch for calling emergency



ONI® tracking system will be installed to every rally car before each event. Detailed information will be published no later than during roadbooks issuing.

After arrival to the scrutineering, device administrator will install the tracking unit, antenna and control panel. Antenna and power supply cables can be purchased by the crew for personal ownership.

At the end of the rally or after retirement, the tracking unit or complete tracking system must be returned to the device administrator. Usually the devices are collected in the last service area or before finish of the rally.

3. Installation of the unit in the car

3.1 To fit the tracking unit with display, antenna and control panel, it is necessary for the competitor to follow exactly the Installation guide, to keep the unit in good condition and to protect it against damage and fouling (especially the connectors) during the time.

3.2 Foreign and one time rally participants will receive a rental version of the set equipped with magnetic roof antenna.

3.3 Control panel with OK button and SOS switch is in one box for which the competitor has to choose a suitable place for fitting within the reach of both crew members. It is obliged to prepare everything for its installation prior to the scrutineering.



4. The unit operation during rally

To operate the unit, the crews have to meet all instructions as mentioned in the User's guide.

Operation during events on SS:

- **Accident (crash detection)**

- The unit evaluates the situation and sends info about accident to rally control. Crew cannot affect this message.
- The display shows message: **Are you OK?** Confirm.
- 10 s after this question, the siren wails for next 15 s
- If the crew pushes **OK** button, this information is sent to rally control and information about accident is not sent to the unit of following cars in the stage.

- **Stop in SS**

- When the car stops in SS, it is counted as an obstacle. Unit signals to the crew by sound siren and text, that they have stopped. This signal takes 15 s.
- If the crew doesn't push OK, warning message is sent to the rally control and also to other cars, which are currently in the stage arriving to the obstacle.
- With pushing the OK button the crew confirms that they are okay, on the display is shown message OK and information about obstacle is not send to the unit of next cars in the stage.

- **Request for help**

- Changing the switch is confirmed by SOS message on display, also the siren sounds.
- The siren sound can be cancelled by pushing OK button.

- **Red flag**

- When the rally control hangs out the red flag, the display shows big message RED FLAG (with red background) and the siren sounds.
- Crew has obligation to confirm receiving the red flag by pushing the OK button and to reduce the speed according to the sporting regulations.
- The siren sound can be cancelled by pushing OK button.
- The red flag on display can be cancelled only by rally control.

5. Speed checking during reconnaissance

During reconnaissance the crew is obliged to follow traffic rules of the Czech Republic. Not respecting this rules, especially exceeding the speed limits, will be monitored via ONI® tracking system. This checking doesn't exclude other checks, i.e. police controls according to their standard procedures.



ONI® tracking system for reconnaissance

Tracking system is checking the speed in every moment during the reconnaissance.

Every crew will pick up the ONI® recce tracking unit together with roadbook. Installation of the unit and its using during reconnaissance is obligatory for all crews during the whole schedule of reconnaissance according to the art. 3 Reconnaissance schedule. For speed checking during the reconnaissance, NCL 21 units are used.



NCL21 unit is started during roadbook issuing before starting of reconnaissance. For whole reconnaissance the unit is working on its own battery. It is not necessary to plug the unit to any power supply.

It is possible to place the unit on metal surfaces - magnets are implemented in the unit.

Not using the unit in a rally car during reconnaissance will be fined.

Every attempt to falsify, manipulate or infringe the unit for reconnaissance or any device, which will make impossible to collect data because of external interference will be reported to the stewards who can penalize the crew up to refusing the start.

Decision regarding seriousness of the offence and its repeating is in Clerk of the Course's authority. For exceeding the speed limit, sanctions can be given according to supplementary regulations or championship regulations.

6. Manuals and other informations: www.onisystem.cz/rally