



**KENYA MOTOR SPORTS CLUB**

**2022 KENYA NATIONAL RALLY CHAMPIONSHIP**  
**Round 1**

**Organised by: Kenya Motor Sports Club**  
**29<sup>TH</sup> & 30<sup>TH</sup> JANUARY 2022**

**SAFETY PLAN**

**!! CAUTION: PLEASE READ THIS DOCUMENT TOGETHER WITH  
THE EVENT ADDITIONAL SUPPLEMENTAY REGULATIONS AND  
THE ITINERARY!!**

Contents

1.1 Objective:.....3

1.2 Authority:.....3

1.3 Date of the Rally (also referred to as the event):.....3

1.4 Rally base / Headquarters:.....3

1.5 Emergency Services and Resources Available: .....3

1.6 Radio/ Communication Networks: .....4

2. EMERGENCY NUMBERS .....4

3. RALLY CONTROL.....4

3.1 Location .....4

3.2 Operational Hours .....4

4. OFFICIALS CONTACT DETAILS .....4

4.1 Organiser: .....4

4.2 Organising Committee: ..... Error! Bookmark not defined.

4.3 Stewards of the Meeting: .....5

4.4 Senior Officials of the Event: .....5

5. SAFETY SERVICES .....6

5.1 Medical Services along and around the Rally Route .....6

5.2 FIV Equipment .....6

5.3 Helicopter Services .....6

6.1 Guideline .....7

6.3 Emergency procedure .....8

    ? Essential Facts required in such a report are .....8

6.4 Communication during an Emergency .....9

6.5 Rally Control Emergency Contact Numbers .....9

6.6 Preventative Safety Measures .....9

6.7 Red Flag Procedure .....10

7. ROAD CLOSURE SCHEDULE .....11

7.1 Road Closure Authorities .....11

7.2 Safety cars Schedule.....11

7.3 Road Closure Schedule.....11

7.4 Mid-Point Monitoring (MPM).....11

8. SERVICE PARK .....12

9. REFUELLING ZONE (INCLUDES REMOTE REFUELLING ZONE).....14

10. RECONNAISSANCE .....15

11. SPECTATOR POINT .....15

11.1 Safety Point Briefing .....15

11.2 First Aid Tips .....17

## INTRODUCTION

### 1.1 Objective:

- To organise and run the **2022 Kajiado Rally** event in a safe and environmentally friendly atmosphere.
- To assess risks to drivers, organisers, officials and spectators and put in place mitigating measures to manage the risks.
- To put in place procedures to identify status of incidences and where necessary institute first medical intervention and/ or evacuation.
- To apply relevant recommendations from safety report for the previous events.
- To run the Event in conformity with GOK COVID-19 mitigation protocols.

### 1.2 Authority:

This document is prepared in accordance with Kenya Motorsport Federation (KMSF) 2022 National Competition Rules. It sets out the systems that are in place and specifies the processes to use in the event of any injury accident for competitors, officials and the public. The document does not take away the authority of managing the day-to-day running of motorsport events, vested upon KMSF by FIA.

### 1.3 Date of the Rally (also referred to as the event):

- Recce: Saturday 29<sup>th</sup> January 2022
- Rally: Sunday 30<sup>th</sup> January 2022

### 1.4 Rally base / Headquarters:

- KMSF Office - Documentation
- KMSC Club House- Scrutineering and 1<sup>st</sup> Steward's meeting
- Service Park – KUMPA

### 1.5 Emergency Services and Resources Available:

The following emergency resources are available throughout the event:

- One helicopter as supplied by KMSF.
- FIVE ambulances - one at the start of each competitive stage, one at service park.
- Technical Intervention Vehicles stationed at start of CS.
- Safety Delegate CAR running 60 minutes before 1<sup>st</sup> car
- Car 00 running 40 minutes before 1<sup>st</sup> car
- Car 0 Running 20 minutes before 1<sup>st</sup> Car

- 1x Sweeper car running 3 minutes behind last competing Car.
- One medical tent with a trauma technician and assistant at the Service Park/HQ.
- 20 contracted Marshalls who will have orange reflector jackets
- 5 first aid boxes from KMSF
- Safety net and safety tape at spectator safe zones

#### **1.6 Radio/ Communication Networks:**

- All controls equipped with Safaricom and Airtel mobile phone sets with adequate credit. Both networks carry adequate coverage in the area of the event for both voice and data.
- All HQ Based Senior official contacts are provided in the event of an emergency in this Safety Plan
- MIVs equipped with radios

## **2. EMERGENCY NUMBERS**

Rally emergency phone number:

- Clerk of Course Safaricom –0722 524120
- Event Director Safaricom – 0722 511378

#### **EMERGENCY SERVICES**

AMBULANCE:	<b>ST Johns Ambulances</b>
FIRE:	<b>KAJIADO/ KITENGELA COUNTY FIRE SERVICE</b>
POLICE:	<b>II Bisil POLICE STATION</b>
RESCUE HELICOPTER:	<b>KMSF</b>

## **3. RALLY CONTROL**

### **3.1 Location**

- Kenya Motor Sports Club – Club House South C Nairobi
- Service Park – KUMPA GPS: TBA

### **3.2 Operational Hours**

- Recce: 29th January 2022 (0800 – 1700 Hrs).
- Rally: 30th January 2022 (07:00hrs to 17:00hrs)
- HQ's & all related services: 11<sup>th</sup> and 30th January 2022

## **4. OFFICIALS CONTACT DETAILS**

### **4.1 Organiser:**

Kenya Motor Sports Club

#### 4.3 Stewards of the Meeting:

	Name	License no.	Phone Number
ASN Steward (Chairman):	Joan Nesbitt		
Club Steward	Ken Wamae		

#### 4.4 Senior Officials of the Event:

Designation	Name	Contact
<b>Chairman Organising Committee</b>	Jim Kahumbura	0722511378
<b>Event Director</b>	Jim Kahumbura	0722511378
<b>Clerk of Course</b>	John Kamau	0722524120
<b>Deputy Clerk of Course</b>	George Njoroge	0722228200
<b>Assistant Clerk of Course</b>	Jaswinder Chana	0722519554
<b>Club Steward</b>	Ken Wamae	0722056200
<b>Chief Safety Officer</b>	Abbas Murbe	0799008225
<b>Secretary of the Event</b>	Lucy Njuguna	0724170879
<b>Chief Medical Officer</b>	Dr. Karuri	0721247197
<b>Competitor Relation Officer</b>	Faith Wathome	0722410375
<b>Media Officer</b>	Samson Ateka	0721883631
<b>Sponsor Liaison Officer</b>	Sylvia King	0728270288
<b>Club Scrutineer</b>	Bruno Njuguna	0721534345
<b>ASN Safety Delegate</b>	Norris Ongalo	0724803000

## 5. SAFETY SERVICES

### 5.1 Medical Services along and around the Rally Route

Medical Services along and around the Rally Route:

- Nairobi Hospital  
Tel: +254202845000, 254703082000  
GPS Coordinates: 1.2955° S, 36.8051° E
- Karen Hospital  
Tel: +254 726 222 001/2/3 , +254 736 222 001/2/3  
GPS Coordinates: 1.3362° S, 36.7758° E
- Aga Khan Hospital - Accident and Emergency Department  
Telephone: +254 3740000 ext. 2020 / 2022  
Emergency No: 0711092000  
GPS Coordinates: 1.2612° S, 36.8242° E

### 5.2 TIV Equipment

As approved by the Chief Medical Officer,

- Airway management equipment
- Oxygen administration equipment
- Immobilisation equipment
- Monitoring equipment
- Intravenous access/administration equipment
- Medications
- Wound care / bandaging equipment
- Miscellaneous
- Safety and rescue equipment

### 5.3 Helicopter Services

- The helicopter service is provided for the Rally by **KMSF**. This service will consist of: -
  - One helicopter
  - A pilot
  - Medical Officer from HQ
  - 1 paramedic
  - Jaws of life equipment
- The helicopter is able to carry 1 stretchered casualty and up to 3 sitting casualties.
- The helicopter will be strictly for evacuation services **ONLY**.

- The helicopter crew will receive instruction from the Clerk of Course under the advice of the CMO. CoC and Stewards to decide on conduct of rally should the emergency helicopter be deployed for an evacuation where the rally is still running.
- It will be located at the service park.
- Rally Control will monitor all movements of the helicopter.
- During the hours of operations, the helicopter crew will remain on standby at all times and report every take-off and landing to the Rally Control/CoC.
- There are several helicopter landing sites available along the route.
- 75% of the route has several adjacent open grounds the pilot may use at discretion.
- Casualties, regardless of the nature of their injuries, which cannot be handled in the field by the medical crew present, will be taken to any one of the hospitals as previously listed. With the advice of the Chief Medical Officer, casualties transferred to hospital will either be by helicopter (for emergency cases only) and/ or ground ambulance. The Chief Medical Officer will advise the Clerk of Course on any evacuation decision taken in the event this has an impact on the safe running of the rally.

## 6. EMERGENCY RESPONSE

### 6.1 Guideline

Event	Action to be taken	Person Responsible
Any Accident or Systems Alert	Notify any/area officials ASAP. State exact location as far as possible, using stage number, roads book page number or GPS if available. State nature of accident and severity of injuries	Crews passing by. Public/Officials.
Initial Aid	Render basic first aid, preferably without moving patient from position found.	Crews passing by. Public/Officials
Primary Response	Nearest Stage Commander/Safety Crew responds immediately and assesses situation and commences management. Report to safety officer	Stage Commander, safety crew
Stage Closure	Stage Start Controller to suspend stage and not permit any further crews to enter the stage after instructions from CoC. Deploy all Safety Crew	Stage Commander
Information	Transmit information & any additional requirements to CMO, Safety & Security Officers. Ensure receipt of message	Stage Commander, safety Crew
Secondary Response	Mobilisation by the Medical, Safety &/or Security Officers, in co-ordination with the CoC ONLY. Must respond and enter only in the Rally Direction or designated alternate routes.	CMO, Safety Officer, Doctor, Ambulance & Helicopter – the last being the decision of the CMO with the CoC.
Transport	Stabilized Patients removed from stage and reassessed/ transfer patients to hospitals listed by appropriate transport	Doctor, Ambulance Crew/ Safety Crew/ Helicopter
Vehicle Recovery	Any obstruction or danger caused by the accident vehicle must be removed to a safe place, off the Rally Route, under the direction of the stage commander, safety officer or CoC	Safety Officer & CoC, Stage Commander & Service Crew
Hospitalization	Casualty admitted to appropriate Hospital. Medical Information/Insurance & Guarantee as previously arranged	CMO/ Doctor / Medic
Notification of Service Crew, Relatives	Necessary information relayed as soon as possible	CoC, CRO & CMO
Body Recovery	Body properly identified, tagged and removed to mortuary	Safety Crew/CRO
Accident Investigation	As per requirements, report issued & media briefing	CoC with CRO & Safety officer
Clearance & Reopening	Stage swiped and reopened if clear	CoC ONLY

## 6.2 Evacuation strategy

<b><i>Accident/ Occurrence</i></b>	<b><i>Time Estimates</i></b>
<i>Systems Alerted/Initial Aid</i>	<i>5– 15 Minutes</i>
<i>Primary response/Safety Crew on Scene</i>	<i>15 – 20 Minutes</i>
<i>Information Relayed Back</i>	<i>25 Minutes</i>
<i>Mobilization/ Secondary Response to the Scene</i>	<i>40 Minutes</i>
<i>Patient transfer to Hospital</i>	<i>90 Minutes (Earlier in Helicopter)</i>
<i>Patient Admission to Hospital</i>	<i>As per Hospital Trauma Team</i>

## 6.3 Emergency procedure

This procedure is entirely dependent on the initial reports of the accident. The report must include the following and be made according to the guidelines provided.

- Essential Facts required in such a report are:
  - Vehicle Rally Number Involved
  - Time of Accident
  - Location of Accident as per provided guidelines.
  - Source of Information – e.g. passing crew, public etc.
  - Reported Injuries and/or damage and actions taken so far.
- The information must be relayed immediately in the following Chain of Command
  - Source of Information to Stage Commander
  - Stage Commander to Stage Start & Mid-Point Safety Crew
  - Stage Commander to Medical/Safety/ Security officers & CoC.
- The Safety Crew at the start of the stage will immediately prepare and be ready for further orders & close the stage if so requested by the CoC.
- Safety and Medical Crew on standby will only proceed to assist the crew on the advice of the CMO &/or Safety Officer in conjunction with the CoC.
- Ambulance and Helicopter crew will be notified and put on standby.
- The CoC via the Stage Commander will suspend the stage and only permit authorized vehicles and personnel to enter the stage. All traffic entering the stage will be recorded by the stage commander or controller. The list will be used to check-out the vehicles from the stage once clearance is given.
- Under NO circumstances will any traffic be permitted into the section against Rally Traffic unless under the authorisation of the CoC. The stage commander will have to reconfirm with the CoC before allowing such traffic.
- On arrival at the scene, after the stabilization of the casualty/casualties, the crew MUST update the CMO/Safety Officers, and inform them about the nature and severity of injuries and on the basis of this information the CMO &/or Safety Officers will deploy either the ambulance or the helicopter.
- On successful evacuation and in the event hospitalisation is required, the CMO, the Ambulance crew or helicopter will inform the necessary hospital, and also relay this information to the Rally H.Q.



- After a successful evacuation and the stage is clear of all vehicles and personnel involved in the rescue, the stage will be reopened upon instruction from the CoC ONLY.
- Any rescue/breakdown vehicle going into the section will have to get permission from the Clerk Of Course.
  - No recovery vehicle will be allowed into the rally route while the stage is live.
  - Controllers are not to allow any non-rally into the stages.
  - Air evacuation, if necessary, can be done from the Service Park
- The Clerk of Course shall update the stewards of the event on the incident and a formal report shall be filed with KMSF giving details of the incident and action taken, and to be submitted with the other event documentation to KMSF.

#### **6.4 Communication during an Emergency**

In case of an emergency, Rally Control will be notified either by telephone or over the radio network. Officials and assistants are advised to try and use the telephone BEFORE using any radio network.

#### **6.5 Rally Control Emergency Contact Numbers**

In any emergency situation, the person making the telephone and the Rally Control officer responding to the telephone call should: -

- Identify themselves to the officer they are calling.
- Provide their location and alternative telephone number if any. They will give a brief assessment of the situation including the following information;
  - Nature of the emergency.
  - Number of casualties.
  - Nature of the injuries.
- Await further instructions from Rally Control.
- If it is controller filing the initial report, then he/she MUST designate another person to man their telephone at ALL TIMES.

#### **6.6 Preventative Safety Measures**

- Route opener car (, #00 and #0) plus the route sweeper car will be provided with pace notes from the organisers. They will have time cards stamped at the beginning and end of each stage.
- High risk points along the rally route to be identified and warning signs erected, and Safety marshals to be in high-visibility safety jackets. They will also have yellow flags and will only be raised and waved to drivers to slow them down in case of an incident that could be dangerous to them. They will also be equipped with whistles to be used to warn spectators of on-coming rally cars.
- Police coverage has been arranged along the route. They will be instructed to strictly keep pedestrians, spectators & non-rally traffic off the route. They will NOT drive into the stages.

- The rally is run on Public roads. A spectator zone has been setup to view the rally. A specific area in SS 2/4 will be set up for spectators. There will be additional marshalling and policing along the liaison sections. The organisers will enforce Covid-19 protocols in force and as issued by the Government of Kenya.
- Junctions will be taped where rally routes are likely to re-join.
- Marshalls will be positioned at junctions and at all MPM locations where FIV/Ambulance will be stationed.
- Mid-Point monitors & route marshals will be in place to enforce safety measure.
- Reconnaissance 24 hours prior to the event will create awareness to the public/ locals.
- Safety flyers in English and Swahili will be distributed along the open road stage a week prior to the event and during reconnaissance.
- The service park will be taped off and secured by Police, as well as the starts and finishes of each stage, allowing safe and easy passage of rally cars. Police will also be stationed at the spectator area along with the highly dense areas along the rally route.

## 6.7 Red Flag Procedure

### **Red Flags must only be prominently displayed (held out steady, NOT waved).**

- If you are a radio marshal at a mandatory (red flag) location and an incident occurs which requires the use of red flags and the **Clerk of Course has authorised** their use via the VHF radio the following actions shall then be taken:
  - No flag other than the red flag may be deployed in a Special Stage.
  - The red flag must not be shown to any competitor at any time other than when the Clerk of the Course gives the instruction via the radio controller.
  - Upon receiving the instruction to deploy a red flag the designated Red Flag Marshal (wearing a radio marshal's tabard) at all mandatory radio points preceding the incident must stand with the red flag in an appropriate location adjacent to the special stage.
  - The designated marshals should consider personal safety when choosing the best location to stand.
  - The red flag should be held stationary, ideally at arm's length, so as to be clearly seen by any passing vehicle.
  - Once deployed, the red flags should continue to be displayed until an instruction from the Clerk of the Course to withdraw the flags has been received by the Red Flag Marshal.
  - Throughout this process the designated flag marshal should ensure that his or her own safety is maintained.
  - Should a Sector Official/Marshal in charge of a Radio Point observe a competitor who has been shown a Red Flag not comply with the regulations and not reduce speed, then a written report recording the facts should be completed and handed to the Sweeper Car or photographed and WhatsApp messaged to the Chief Safety Officer and the Clerk of Course whichever will be quickest for further action.

- The initiating and stand down of a Red Flag situation is absolutely under the control of the Clerk of Course and his Chief Safety Officer - and only instructions relayed by them will be acted upon.
- The Sector/Radio Point marshal is expected to keep a Time log of the following:
  - 1) Time of the Red Flag deployment (following the report of an incident requiring a Red Flag)
  - 2) Car number/s affected by the Red Flag procedure as appropriate
  - 3) Time of either cancellation or reopening of the Stage
  - 4) Send a picture by WhatsApp or the sweeper to the C of C / Safety Officer of this Time Log.

## **7. ROAD CLOSURE SCHEDULE**

### **7.1 Road Closure Authorities**

Use stage controllers in conjunction with Traffic police to close and secure the route at least 1 hour before the first Safety Car.

Use local administration and local marshals as much as possible.

### **7.2 Safety cars Schedule**

Safety Delegate Car	60 Minutes before 1st Car
Car "00" - Route Opener	40 Minutes before 1st Car
Car "0" - Route Opener	20 Minutes before 1st Car
Route Sweeper	3 Minutes after last Car

### **7.3 Road Closure Schedule**

All competitive stages will be manned by police, stage commanders, marshals and radio points.

### **7.4 Mid-Point Monitoring (MPM)**


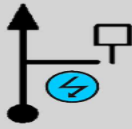



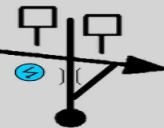



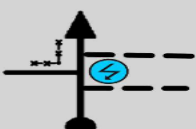
There are several MPM identified at each section and have been marked on the road book. These points shall serve as monitoring points as well as locations where FIV/ ambulance services may be stationed/ accessed if needed.

In the event of an accident, the emergency response procedure shall be enforced.


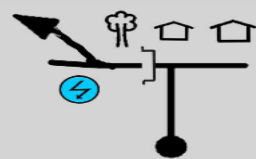



The Mid-Point Monitors (Radio Points) will be placed in strategic locations to safely man the in-let roads that lead onto the rally route.

These locations are depicted on the next page as per the road book diagrams:

### SS1/SS3 Radio Point Marshals

DISTANCE		DIRECTION	INFORMATION	DIST. REGR.		
TOTAL	PARTIAL					
		7.510	1.740		S. O.	-7.510
			19			
9.870	1.060		S. O. @ Blue Board	-9.870		
			24			
19.140	0.280		Culvert X 7	- 19.140		
			45			
25.950	0.580		S. O.	- 25.950		
			68			
31.160	0.350		S. O.	- 31.160		
			80			
34.490	0.410		<b>T. S. R. Ruff</b> Before Culvert Emurkeys Pry Sch	- 34.490		
			88			
36.660	0.190		M. L. Over Sandy	- 36.660		
			91			
40.360	0.120		M. R.	- 40.360		
			103			
44.930	0.200		S. O.	- 44.930		
			113			
52.090	0.280		S. O.	- 52.090		
			127			

## SS2/SS4 Radio Point Marshals

DISTANCE		DIRECTION	INFORMATION	DIST. REGR.
TOTAL	PARTIAL			
6.820	0.240	 178	M. L.	31.940
9.700	0.110	 189	T. S. L. Over Drift Into D. N. M. T. M. R.	29.060
13.330	0.410	 197	S. O.	25.430
13.780	0.450	 198	S. O.	24.980
14.570	0.280	 200	S. O.	24.190

## **8. SERVICE PARK**

This will be located at the KUMPA (GPS details to supplied by Bulletin). This area will be under the stewardship of the service park manager. KMSC will appoint a safety crew who will work with the service park manager to ensure safety compliance.

The service manager and safety crew will ensure that: -

- There are dedicated entry and exit for rally cars
- There are dedicated entry and exits for service crew and officials
- Speed limits within the park as per ASRs observed; with non-compliance cases reported to the CoC or Safety officer
- No unauthorised persons within the park, this includes children. The number of crew permitted per team in the Service Park will be communicated by Bulletin.
- No riding within the park
- No cooking or open flames within the park
- All service pits must have at least a total of 3(three) 9 kg powder-based fire extinguishers.
- All fire extinguishers must be easily accessible and placed within 3 metres of the service pit.
- Each service crew must be aware of where the fire extinguishers are.
- No fuel is allowed at the service pits. All fuel MUST be deposited/ stored at the designated fuelling zones
- When necessary as part of service, changing of fuel tank, changing of fuel pump, changing of fuel filter, changing of any other item of the fuel circuit or emptying of fuel is permitted in a service park provided that: -
  - The work is carried out with the knowledge and permission of the safety officer or the safety crew in charge of Service Park.
  - Fire extinguisher with operator on stand-by to be provided by the competitor.
  - No other work is carried out on the car while the fuel circuit is opened and/or during the emptying.
  - No emptying of fuel to the ground.
- There will be a dedicated “Medical Tent” to be used as a temporary holding for any injured or sick individuals. It can also be used by dehydrated crew. The CMO will be in charge of this tent.

## **9. REFUELLING ZONE (INCLUDES REMOTE REFUELLING ZONE)**

This area will be under the stewardship of the respective refuelling zone managers. The SUC appointed safety crew will also work with the service park refuelling zone manager to ensure safety compliance. Another safety crew will be appointed to work with the remote refuelling zone manager.

The refuelling zone managers and safety crew will ensure that: -

- The zone has no long dry grass. Where possible, have the refuelling zone with sand floor on a leak proof container.
- There are dedicated fire marshals during refuelling.
- There is a dedicated area for placement of the fuel containers.
- Access within the fuelling zone is restricted; access restricted to fuelling crew and officials only.
- Storage of fuel is in intrinsically safe ISO approved Fuel containers.
- Only metallic funnels are used at the fuelling zone
- The rally crew are fully dressed up and rally suits fully zipped up before entering the fuelling zone. The rally crews should not have their safety belts on.
- All other safety measures enforced as per 2022NCRs

## **10. RECONNAISSANCE**

- Speed limits shall be observed as per the traffic code.
- Recce Marshalls may be deployed on the rally route with or without speed guns to report cases of non-compliance.
- Only the Road Book containing tulip diagrams will be provided. Crews will onward make their own pace/gravel notes.
- Reconnaissance trackers fitted in the Recce Cars will relay speeds in 'real time' to Rally Control and any violation of the speed limits will be reported to the C of C. Speeding fines are financially punitive – (1000/- per Km/h over the stipulated speed limit) with repeat offences escalating the fine further as per the 2022 KMSF NCR's.

## **11. SPECTATOR POINT**

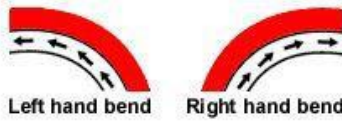
### **11.1 Safety Point Briefing**

- A spectator VIP point has been set up in stage two which will be fully manned.
- No spectators allowed to cook within the spectator stage.
- See below safety tips:

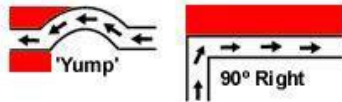
**SHADED AREAS ARE PROHIBITED**



**SAFETY TIPS**

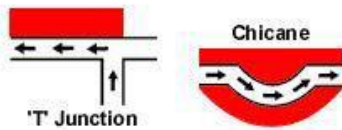


When you come to cheer us on, make sure that you don't stand in any of the following shaded areas, otherwise you could cause delays or even the cancellation of the stage.



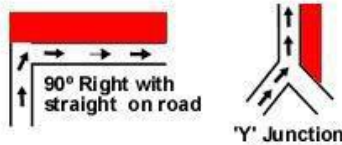
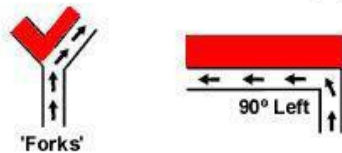
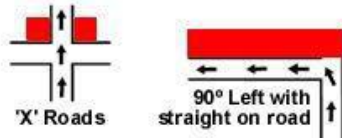
**DON'T**

- Stand on the road
- Stand below the level of the road
- Stand in front of arrows or signs
- Stand or sit on, or near, log piles, walls or fences
- Sit close to the edge of the track
- Block escape routes
- Be distracted
- Play games with your safety or that of the drivers
- Remove stage signs or arrows
- Be the one to stop the stage



**ALWAYS**

- Expect the unexpected
- Listen for approaching cars
- Remain alert
- Leave yourself room to move quickly
- Try to keep behind something solid
- Keep children under supervision
- Keep dogs on a lead
- Do as the marshals ask
- Help the marshals to run a safe stage



**SHADED AREAS ARE PROHIBITED**

**WARNING MOTORSPORT CAN BE DANGEROUS!  
DESPITE THE ORGANIZERS TAKING PRECAUTIONS, ACCIDENTS CAN HAPPEN. YOU ARE PRESENT AT YOUR OWN RISK.**



## 11.2 First Aid Tips

- Small cuts and wounds
  - Clean around the wound edges with an antiseptic e.g. Dettol
  - Pick out any visible debris, e.g. grass, gravel, glass with a forceps
  - Clean the wound with Hydrogen Peroxide or an antiseptic
  - If none of the above is available, use clean water
  - Cover with sterile gauze and tape (no cotton wool direct on wound)
  
- Large cuts and wounds
  - Apply same procedure as above and in addition
  - Debride wound carefully
  - Wash copiously
  - Pad wound with more gauze
  - Seek medical advise
  
- Burns and scalds
  - If first degree (reddening of skin only) , Dermazine ointment, leave open
  - If second degree (skin blistered) and not burst, Dermazine ointment, leave open. If not more than 15% needs IV fluids.
  - If second degree, circumferential, Dermazine ointment and bandage
  - If third degree, Dermazine ointment and bandage
  - For > 15% second and all third degree burns, SEEK medical advice.
  
- Sprains
  - Free affected part of all constrains e.g. clothing, shoes, etc
  - Apply analgesic ointment e.g. Bayrogel
  - Bandage the part with a firm crepe
  - If possible elevate the part
  
- Obvious fractures
  - Free affected part of all constrains e.g. clothing, shoes, etc
  - Bandage the part with a firm crepe over a straight and rigid splint
  - If possible elevate the part
  - SEEK medical advice

### **11.3 Spectator Guide**

#### **DON'TS**

- DO NOT stand too close to the road.
- DO NOT block escape routes. Rally cars may need the runoff room, and emergency vehicles need to have fast access to the road in case of an emergency.
- DO NOT stand on the road
- DO NOT stand below the level of the road
- DO NOT stand in front of arrows or signs
- DO NOT stand or sit on or near log piles, walls or fences
- DO NOT sit close to the edge of the track
- DO NOT be distracted
- DO NOT play games with your safety or the safety of the drivers
- DO NOT remove stage signs or arrows
- DO NOT be the one to stop the stage
- DO NOT jump out onto the road to take pictures; there could be another car right behind the first one
- DO NOT throw anything on the route - it could endanger the safety of passing competing crews. This behaviour is also handled in the Criminal Penal Code!

#### **DO'S**

- DO expect the unexpected
- DO listen for approaching cars
- DO remain alert
- DO leave yourself room to move quickly
- DO try to keep behind something solid
- DO keep children under supervision
- DO leave your pets at home
- DO as the marshals ask
- DO help the marshals run a safe stage
- DO try to keep behind something solid, such as a large tree or rock

Obey the Organizers' instructions. If people are asked by the Route marshals to leave dangerous place on the rally route, they should follow these instructions.