



Date:	05.05.2022	Time:	15:45
Datum:		Čas:	15:45
Subject:	Bulletin no. 2	Doc. no.:	1.2
Předmět:	Prováděcí ustanovení č. 2	Č. dokumentu:	
		Attachments:	4
		Přílohy:	

FIA EUROPEAN HISTORIC RALLY CHAMPIONSHIP 30. HISTORIC VLTAVA RALLYE 5. – 8. 5. 2022

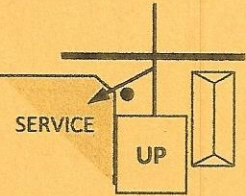

Due to current changes to the SUPPLEMENTARY REGULATIONS are made:

APPENDIX 1. ITINERARY

Itinerary – 2nd LEG - Change of designation of Refuelling Zones

Correction of the ROAD BOOK:

- 1st and 2nd LEG, Replace map with the map in Attachments 1 in this bulletin
- 1st LEG, Replace page No. 77 with the page in Attachments 2 in this bulletin
- 1st LEG, Replace page No. 93 with the page in Attachments 3 in this bulletin
- 1st LEG, Page 75, box 23 – change: TC / ČK 3B / 6€ 6B

-	0,15		 N 49°20.079' E 13°12.429'	-
		23	TC / ČK 3B / 6B JANOVICE - SERVICE IN	

- Map of the Refuelling zone 5/7 - Hlavňovice in Attachments 4 in this bulletin



TECHNICAL SCRUTINEERING INDIVIDUAL TIMETABLE:

Time:	Starting number:			
17:00:00	1	3	17	
17:10:00	2		42	
17:20:00	6	5	7	
17:30:00	8	9	10	11
17:40:00	12	14	15	16
17:50:00	18	19	20	
18:00:00	21	22	23	4
18:10:00	24	25	26	27
18:20:00	28	29	30	31
18:30:00	32	33	34	35
18:40:00	36	37	41	43
18:50:00	44	45	46	47
19:00:00	48	49	50	

Henrik Frank
Chairman of the stewards

Janis Krastins
Steward

Stanislav Minářik
Steward



APPENDIX 1. ITINERARY

30. HISTORIC VLTAVA RALLYE 2022

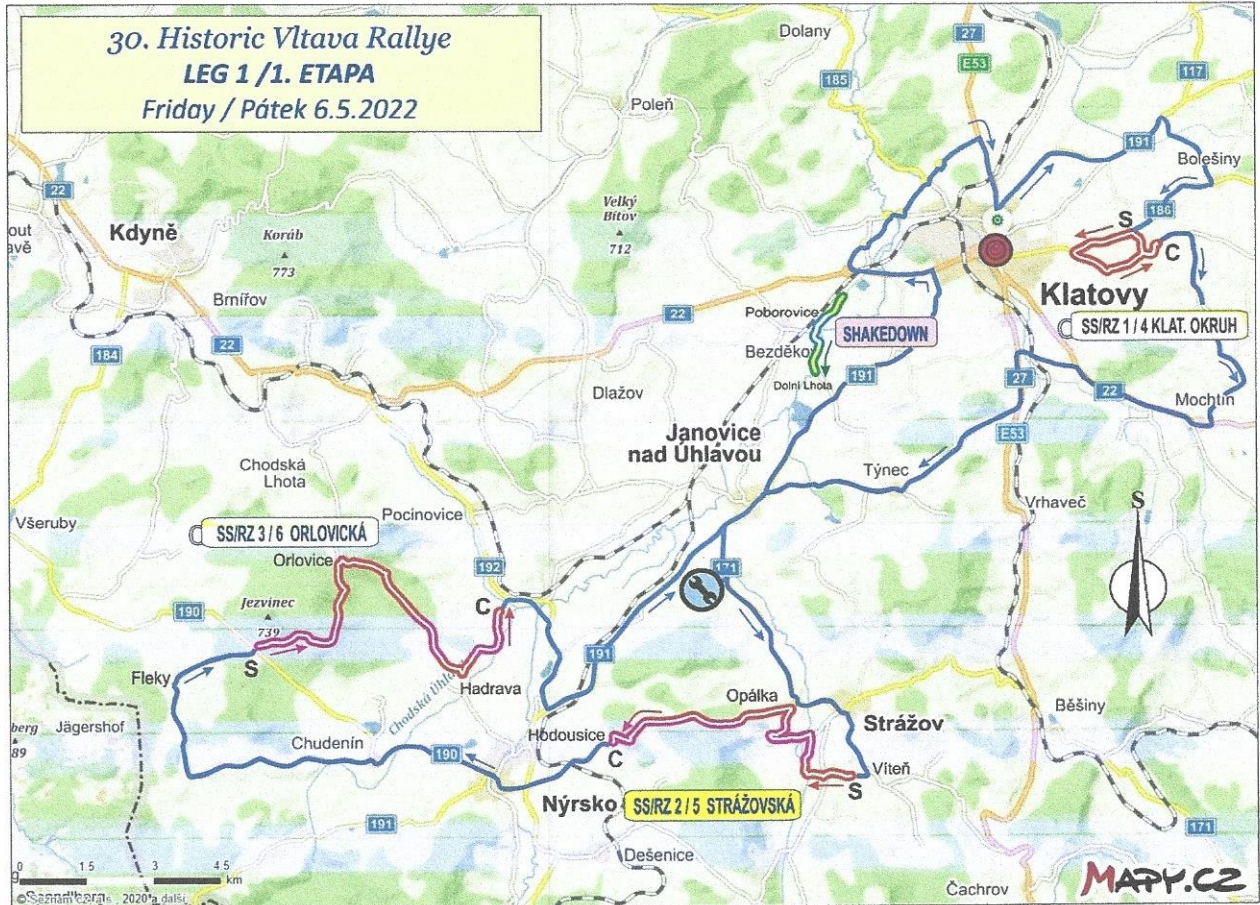
TIME SCHEDULE / ČASOVÝ HARMONOGRAM

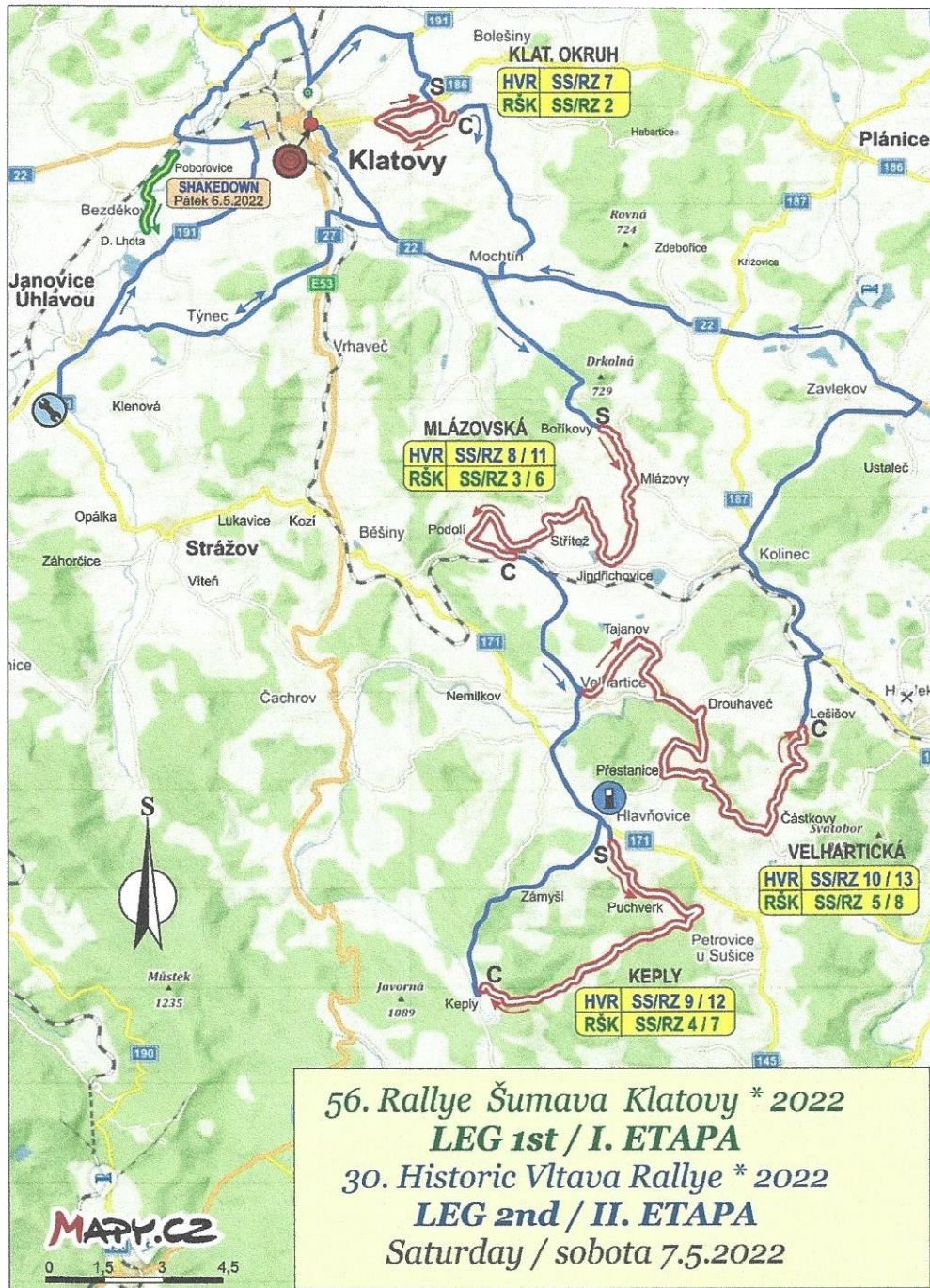
LEG 2 / 2. ETAPA		Saturday / sobota 7.5.2022				
SS/RZ TC/ČK	Location Místo	SS dist. RZ délka	Liaison dist. Trať bez RZ	Total dist. Spoj. úsek	Target time Jízdní doba	First car due Čas 1. jezdce
6D	Parc fermé-OUT - Janovice					7:40
6E	Service-IN	—	0,32	0,32	0:03	7:43
Service C (Janovice, Rozvojová zóna)		(0)	(0,32)	(0,32)	0:15	
6F	Service-OUT	—	—	—		7:58
RZ/TZ 4	Refuelling - tankovací zóna	(34,51)	(46,23)	(78,35)		
7	Slavošovice	—	22,05	22,05	0:35	8:33
SS/RZ 7	KLATOVSKÝ OKRUH	12,82	—	—	—	8:36
8	Bořikovy	—	11,76	24,58	0:34	9:10
SS/RZ 8	MLÁZOVSKÁ	11,70	—	—	—	9:13
RZ/TZ 5	Refuelling - tank.zóna Hlavňovice	(25,4)	(54,5)	(84)		
9	Hlavňovice	—	9,48	21,18	0:38	9:51
SS/RZ 9	KEPLY	9,99	—	—	—	9:54
10	Velhartice	—	9,62	19,61	0:28	10:22
SS/RZ 10	VELHARTICKÁ	15,41	—	—	—	10:25
10A	Regrouping-IN & Technical zone-IN	—	38,34	53,75	1:12	11:37
Regrouping (Janovice)					1:15	
10B	Regrouping-OUT - Service-IN	—	—	—		12:52
Service D (Janovice, Rozvojová zóna)		(49,92)	(91,57)	(141,49)	0:30	
10C	Service-OUT	—	—	—		13:22
RZ/TZ 6	Refuelling - tankovací zóna	(21,69)	(32,27)	(51,57)		
11	Bořikovy	—	19,85	19,85	0:34	13:56
SS/RZ 11	MLÁZOVSKÁ	11,70	—	—	—	13:59
RZ/TZ 7	Refuelling - tank. zóna Hlavňovice	(25,4)	(59,8)	(89,3)		
12	Hlavňovice	—	9,48	21,18	0:38	14:37
SS/RZ 12	KEPLY	9,99	—	—	—	14:40
13	Velhartice	—	9,62	19,61	0:28	15:08
SS/RZ 13	VELHARTICKÁ	15,41	—	—	—	15:11
13A	FINISH KLATOVY	—	30,74	46,15	1:02	16:13
Target ramp / Cílová rampa		Neutralization / Neutralizace				
13B	Klatovy, square					
13C	Janovice, Parc ferme / UP	—	12,9	12,9	17	

LEG 2 totals	87,02	161,26	248,28
---------------------	--------------	---------------	---------------

RALLY TOTALS					
LEG ETAPA	No. of SS Počet RZ	SS dist. RZ délka	Liaison dist. Trať bez RZ	Total. dist. Délka celk.	
1	6	59,50	149,52	209,02	28,47%
2	7	87,02	161,26	248,28	35,05%
Overall Totals	13	146,52	310,78	457,30	32,04%

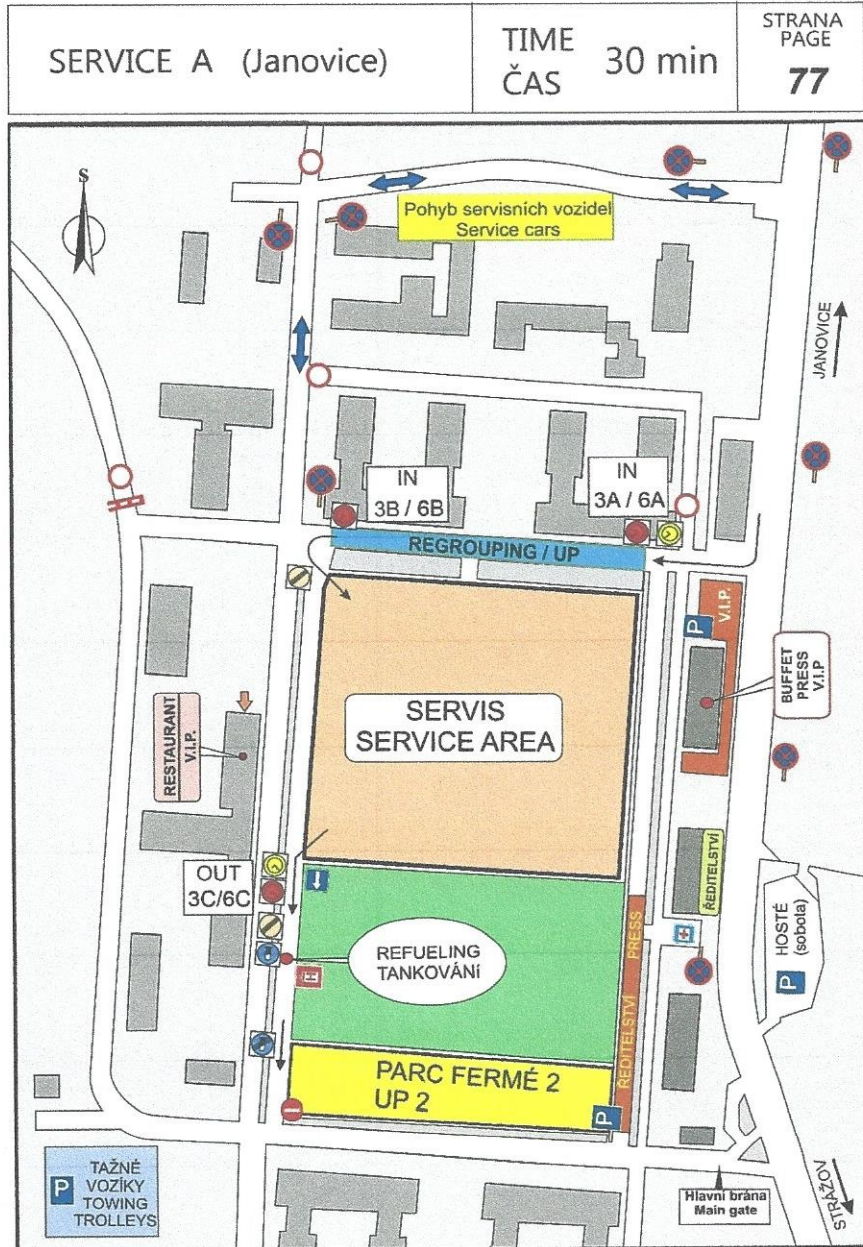
Attachments 1







Attachments 2



30. HISTORIC VLTAVA RALLYE * 2022



Attachments 3

ALTERNATIVE ROAD			ETAPA	I.	AVERAGE SPEED	PAGE
SS/RZ 1/4 KL. OKRUH - TC/ČK 2/5 VÍTEŇ			SEKCE	1./2.	32,54 km/h	93
SS/RZ	Special Stage/Rychlostní zkouška	PC/PK	DISTANCE		TIME	
		-	32,34 km		54 min.	
TOTAL	PART.	DIRECTIONS	INFORMATION			REGH.
0,00	0,00			START SS / RZ 1 / 4		32,34
		1	Začátek objezdové trasy. Beginning of alternative road.			
0,64	0,64					31,7
		2				
0,72	0,08					31,62
		3				
1,09	0,37			FINISH / CÍL SS / RZ 1 / 4		31,25
		4				
<p>Pokračujte dle itineráře str.48, údaj 26.</p> <p>Continue with the Road-Book page 48, box 26.</p>						
30. HISTORIC VLTAVA RALLYE * 2022						



Attachments 4

Map of the Refuelling zone 5/7 - Hlavňovice

