



الاتحاد السعودي للسيارات والدراجات النارية  
Saudi Automobile & Motorcycle Federation

## **INTERNATIONAL HAIL RALLY 2021**

# **BIKE / QUAD SUPPLEMENTARY REGULATIONS**

**06<sup>th</sup>–11<sup>th</sup> DECEMBER 2021**

*All Regulations concerning FIM Rallies can be found using the follows link:*

<http://www.fim-live.com/en/library/>

1. PUBLICATION .....	3
2. ACCESS .....	3
3. HONOUR COMMITTEE .....	3
4. ORGANISING COMMITTEE .....	3
5. ADDRESS OF THE SECRETARIAT .....	3
6. LIST OF OFFICIALS.....	4
7. EVENT PROGRAMME .....	4
8. COMPETITORS.....	6
9. PARTICULAR CONDITIONS OF VISITED COUNTRY .....	8
10. CATEGORIES AND CLASSES.....	8
11. IDENTIFICATION .....	8
12. ADVERTISING .....	9
13. STARTING ORDER.....	9
14. ROAD BOOK AND NAVIGATION .....	9
15. SERVICING AND REFUELLING .....	10
16. TRAFFIC.....	11
17. MARATHON STAGE .....	11
18. INSURANCE .....	11
19. ADMINISTRATIVE OBLIGATIONS .....	11
20. CLASSIFICATIONS .....	12
21. COMPULSORY EQUIPMENT RENTAL .....	12
22. ITINERARY .....	13
23. PARC FERMÉ .....	15
24. BRIEFING .....	15
25. SPEED CONTROL ZONES - DZ .....	15
26. SAFETY .....	15
27. MAXIMUM PERMITTED LATENESS .....	15
28. CRO .....	15
APPENDIX II – ROADBOOK SYMBOLS .....	17
APPENDIX III - EQUIPMENT.....	18
APPENDIX IV - ITINERARY .....	19
APPENDIX V – TRACKING SYSTEM .....	20
APPENDIX VI – GPS AND VEHICLE TO VEHICLE ALARM SYSTEM.....	21

## 1. PUBLICATION

The Saudi Automobile & Motorcycle Federation (SAMF) organizes a Cross-Country Rally named “Hail Rally 2021”, from December 06<sup>th</sup> to December 11<sup>th</sup>, 2021.

The rally will be run in compliance with the FIM International Sporting Code and its appendices, **the 2021 FIM Cross Country World Championship Regulations and its Appendices**, the National Sporting Regulations, and these Supplementary Regulations. The Rally is open to the participation of foreign riders. Modifications, amendments and/or changes to these Supplementary Regulations will be announced only by numbered and dated bulletins (issued by the organizer or the Jury). Additional information is available in the **Rally Guide**.

The event is approved by SAMF VISA No: SAMF 0007.

The event is approved by FIM IMN No: 890/11.

The Hail Rally 2021 will be twinned to a **Car Class** Rally, round of the 2021 FIA Cross Country Rallies World Cup.

### Titles for which the Event counts

- a. **2021 International Hail Rally**
- b. **2021 Saudi Arabia's National Championship for Rallies**

The FIM Cross Country Sporting Regulations can be found at <http://www.fim-live.com/en/library/>.

## 2. ACCESS

Nearest airport: HAIL INTERNATIONAL AIRPORT (HAS)

Nearest town: Hail - KSA

## 3. HONOUR COMMITTEE

N/A

## 4. ORGANISING COMMITTEE

Chairman	H.H. Prince Khaled Sultan AL FAYSAL
Members	Sattam AL HOZAMI ElieSEMAAN

## 5. ADDRESS OF THE SECRETARIAT

### 5.1 Permanent Secretariat

Saudi Automobile & Motorcycle Federation  
4627 Al Baji - Al Sharafiyah Dist. 4627 – Unit 2  
RIYADH 12724 - 7265  
Tel.: +966 011 880 4614  
Email: [info@samf.gov.sa](mailto:info@samf.gov.sa)

### 5.2 Secretariat during the Event

From December 05<sup>th</sup> at 10.00 h. to the closure of the event at:

**MILLENNIUM HOTEL HAIL**  
Al Khotta Road, North Hail

Tel.: +966 16 538 6111

Email: [saudirallies@samf.gov.sa](mailto:saudirallies@samf.gov.sa)

*HAIL RALLY 2021 – Supplementary Regulations*

## 6. LIST OF OFFICIALS

### Jury of the Meeting

	Name
Jury President	<b>Izak SANTEJ</b>
Jury Member	<b>Daniele COTTO</b>
ASN Jury Member	<b>Hasan ABDALI</b>

### Senior Officials

	Name
Rally Manager:	Elie SEMAAN
Clerk of the Course:	Marc Ducrocq
Deputy Clerk of the Course:	Tba
Chief Safety Officer:	Abdul Aziz AIKHULAIFI
Deputy Chief Safety Officer:	Saad GHANOUM
Deputy Chief Safety Officer:	Alain GROSMAN
Safety Officer:	Chadi ISSA
Chief Medical Officer (CMO):	TBA
Deputy Chief Medical Officer:	Dr. Amjad OBEID
Scrutineers (Chief Scrutineer):	Abdelrahman GHULOOM
Scrutineer:	Tba
Scrutineer:	Tba
Environmental Steward:	Tba
Chief Marshal:	Abdulrahman AL QAHTANI
Assistant Chief Marshal:	Abdullah Sulaiman AL FAHHAD
Competitors' Relations Officer (CRO):	Tba
Service Parc Coordinator:	Mansour AL JOWHAR
Timekeeping (Chief Timekeeper):	Tba
Media Relations Officer:	Firas NIMRI
Assistant Media Relations Officer:	Neil PERKINS
Logistics Officer:	Muslet AL SUBAI
Secretary of the Event:	Wael AL RIFAI

The list of Officials designated Judges of Facts will be published by bulletin.

## 7. EVENT PROGRAMME

September 30th 2021		
10:00h	Opening date for entries	Website / Permanent Office
November 26th 2021		
20:00h	Closing date for entries	Website / Permanent Office
November 30th 2021		
20:00h	Publication of entry list	Internet (DNB)
22:00h	Publication of Admin checks schedule	Internet (DNB)

<b>December 5th 2021</b>		
10:00h	Opening Service park	Service Park - Hail
10:00h -17:00h	Opening rally office	Rally HQ – Hail
11:00h -17:00h	Collection of rally safety and tracking system	Rally HQ – Hail
10:00h -17:00h	Opening Media Center	Rally HQ – Hail
10:00h -17:00h	Opening Media accreditation	Rally HQ - Hail
<b>December 6th 2021</b>		
07:00h – 20:00h	Opening rally office	Rally HQ
07:00h – 19:00h	Collection of rally safety and tracking system	Rally HQ – Hail
08:00h – 20:00h	Administrative checks (as per schedule publishehd on November 30th)	Rally HQ
09:30h – 21h30	Scrutineering - sealing and marking (as per schedule publishehd on November 30th)	Technical College Hail
09:00h	Opening Media Center	Rally HQ - Media Center
<b>December 7th 2021</b>		
08:00h	Opening rally office	Rally HQ - Hail
08:00h	Opening Media Center	Rally HQ - Hail
08:00h – 13:00h	Administrative checks (as per schedule publishehd on November 30th)	Rally HQ - Hail
09:30h – 15:00h	Scrutineering - sealing and marking (as per schedule publishehd on November 30th)	Technical College Hail
16:00h	Pre-Rally Press Conference	Rally HQ - Media Center
16:30h	Publication of list of riders eligible to Start and Start List for Ceremonial Start	NB / DNB
18:00h	Ceremonial Start	HAIL - Meghwat
19:00h	Publication of start list for Leg 1	NB / DNB
20:00h	Team Managers and Drivers’ Briefing	NB / DNB
<b>December 8th 2021</b>		
05:30h	Opening rally office	Rally HQ - Hail
From tbc	Issuing of road book Leg 1	Service Park - Rally HQ
tbc	Start of the Rally – Leg 1	Service Park
Tbc	Finish of Leg 1 (estimated time 1st Bike)	Service Park
18:30h	Publication of Start List Leg 2	NB / DNB
<b>December 9th 2021</b>		
05:30h	Opening rally office	Rally HQ - Hail
From tbc	Issuing of road book Leg 2	Service Park - Rally HQ
Tbc	Start of leg 2	Service Park
tbc	Finish of Leg 2 (estimated time 1st Bike)	Service Park
18:30h	Publication of Start List Leg 3	NB / DNB
<b>December 10th 2021</b>		
05:30h	Opening rally office	Rally HQ - Hail
From tbc	Issuing of road book Leg 3	Service Park - Rally HQ
Tbc	Start of leg 3	Service Park
tbc	Finish of Leg 3 (estimated time 1st Bike)	Service Park
18:30h	Publication of Start List Leg 4	NB / DNB
<b>December 11th 2021</b>		
05:30h	Opening rally office	Rally HQ - Hail
From tbc	Issuing of road book Leg 4	Service Park - Rally HQ
Tbc	Start of leg 4	Service Park

tbc	Finish of Leg 4 (estimated time 1st Bike)	Service Park – Parc Fermé
Immediately after arrival in the finish	Final Scrutineering (following the marshals' instructions)	Scrutineering Area
17:30h	Post-rally Press Conference	Press Set Podium
18:00h	Publication of Provisional Classification	NB / DNB
18:30h	Publication of Final Classification	NB / DNB
19:00h	Prize-giving Ceremony	Rally H.Q. - Hail
	Closure of the event	

### 7.1 Super Special Stage

There will be no super special stage.

### 7.2 Delivery of Road Book

Road Books will be distributed on the day of the Leg concerned.

The exact times and location will be given by means of a Bulletin.

### 7.3 Official Notice Board

There will be no physical Official Notice Board at the HQ of HAIL RALLY 2021.

The official Notice Board is the Sportity Application on mobile phones and tablets.

The Sportity App can be downloaded from Google Play or Appstore, and password **"HAIL21BIKE"** must be entered.

## 8. COMPETITORS

### 8.1 Entries

The maximum number of motorcycles that can be entered is **100**.

The Competitor enters the HAIL RALLY 2021 in full awareness of the risks that he/she may take by participating in this event.

He/she agrees to indemnify, protect and hold harmless the Organisers, the FMNR and the FIM and anyone acting on their behalf or under their authority, including but not limited to their representatives, employees, agents, officials and volunteers, from and against any and all liability, penal and/or civil, loss, expense or claims of whatsoever nature, including but not limited to third party claims, relating to injury to persons, including death, or loss or destruction of or damage to property arising in connection with his/her participation in the HAIL RALLY 2021.

#### 8.1.1

- Riders must present a competition licence valid for the event. Foreign riders must present authorization or non-objection letter from their ASN.
- Rider must present a valid driving license corresponding to the type and capacity of machine used.

#### 8.1.2

Riders will use an identification bracelet or badge. This bracelet or badge will be worn during the Document Checks and throughout the entire race or until the rider abandon the race or gets disqualified. The lack of bracelet or badge at any time during the race will result in disqualification.

### 8.2 Entry forms

All riders who wish to participate in the event, must register according to the program of this SR.

Entry Form is available on the website of the event. Competitors willing to participate in the event will have to fill it out and send it to the email address mentioned on the entry form.

Registration form must always be sent with payment or proof of payment.

The registration form must include, at least, the following elements:

- **Name and First Name, address, License Number, Driving LicenseNumber;**
- **Contact email in order to receive all official information during the race;**
- **Brand, model, cylinder capacity and license plate of the vehicle.**

### 8.3 Entry fees

Entry fee for each rider (includes fee, civil liability insurance, one plate for Assistance):

**With organiser's optional advertising:**

<b>KSA</b>	SAR	1500
<b>GCC</b>	SAR	1700
<b>OVERSEAS</b>	EUR	1500

**Without organiser's optional advertising:**

<b>KSA</b>	SAR	2400
<b>GCC</b>	SAR	2720
<b>OVERSEAS</b>	EUR	2500

**The compulsory safety equipment's rental fees (GPS Tracking and alarm "Vehicle to vehicle") are NOT INCLUDED in the Entry Fees.**

### 8.4 Security Deposit Cheque

N/A

### 8.5 Assistance Entry Fees

There will be no entry fees for assistance crews/vehicles.

### 8.6 Transport

N/A

### 8.7 Payment

All payments for entries must be made by means of bank transfer addressed to:

**Bank:** THE SAUDI INVESTMENT BANK  
**Account Holder:** SAUDI ARABIAN MOTOR FEDERATION  
**IBAN:** SA08 6500 0000 1014 5993 3001

### 8.8 Entry refusal – Withdrawal – No Show

Entry fees will be fully reimbursed to candidates whose entry has been refused.

The organizer will reimburse the entry fees, minus a variable retainer, to competitors who were unable to participate in the event for reasons of "forcemajeure", subject to the application reaching the organizers the request for cancellation by certified mail. The reimbursement will be:

- 50% of the entry fee for the requests received until 10 days before the start of administrative checks.
- Requests received after the closing date for entries are not entitled to reimbursement of any amount.

No reimbursement will be done in case of withdrawal.

### 8.9 Cancellation or rescheduling of the event

The organizer will reimburse the entry fees in case of cancellation or rescheduling of the event, for any reason. Under no circumstance will the competitors or participants be able to claim any compensation.

## 9. PARTICULAR CONDITIONS OF VISITED COUNTRY

**Visa:** Special Visa application must be sent by email to [saudirallies@samf.gov.sa](mailto:saudirallies@samf.gov.sa).

**Other:** Due to the public health situation resulting from the pandemic of the Covid-19, and its unpredictable evolution, mandatory measures or restrictions may be established, by the Saudi authorities, which impose changes to the present Regulation. Any modification, because of the aforementioned, will be communicated to the competitors by means of a Bulletin or by Communication from the Organiser.

## 10. CATEGORIES AND CLASSES

The vehicles shall be divided into the following categories and classes:

Categories and Classes	
<b>Category 1</b>	450cc (Up to 450cc single or twin cylinder, 2T or 4T)
<b>Category 2</b>	Quads (three-wheel vehicles are forbidden)
<b>Category 3</b>	motorcycles over 450 cc
<b>Class 1</b>	Women
<b>Class 2</b>	Junior
<b>Class 3</b>	Veteran

In this event, only registered and properly documented vehicles will be allowed to participate, including legal circulation insurance, and equipped according to the Road Traffic Laws. The fact of presenting the vehicle to scrutineering is considered as an implicit declaration of the compliance to Technical Rules of Rallies and with the Road Traffic Laws which, if not followed, is considered as a fraudulent act that could be subject to disciplinary sanctions beyond declassification of the Rally.

## 11. IDENTIFICATION

The Organizer will provide each competitor with a set of identification plates comprising 1 front plate and 2 side plates, called number plates. The Organizer will also provide one bib, bearing the race number which should be clearly worn on the competitor's back.

### 11.1 Race Numbers

To assign competition numbers, it will be considered:

- FIM Cross Country Classification
- CCG Baja Championship Classification
- National All Terrain Open Championship Classification
- Priority list of SAMF
- Payment date of registration.



## 12. ADVERTISING

12.1 Advertising can be posted on vehicles if:

- It is not contrary to legislation in force, nor to good customs;
- Do not bump into license plate, Rally plates or spaces reserved for the organization.

12.2 Reserved spaces for organizers for mandatory and non-negotiable collective advertising are:

- 3 Plates with 18 x 22 cm with competition numbers;
- 2 Plates with 5 x 12 cm with Rally logo.

12.3 Collective mandatory advertising is: **tbc**.

12.4 All riders must use organization's advertising. Missing of the advertising material provided by the organization, and/or competition numbers may lead to disqualification of the rider, as well as the cutting or misplacement of the same plates.

12.5 Any image capture, including photos and/or videos, must be previously authorized by the organization.

## 13. STARTING ORDER

- **Start of Leg 1** will be according to Organizer Order: ascendent Race Numbers. Departure gaps will be:
  - For the first 10 riders of **Moto/Quad** the departure gap will be of 2 minutes;
  - All other riders will have a departure gap of 1 minute between them.
  - Between **last bike** and **first quad** there will be NO GAP
- **Start of Legs 2** will be drawn up following of the classification of the SSS. The top 10 riders will start in reverse order 2 minutes by 2 minutes, then from 11 to the end 30 seconds by 30 seconds.
- **Start of Legs 3** will be according to the Standings of the previous stage. The departure gaps will be the same as for Leg 2.
- **Start of Leg 4** will be according to the Standings of the previous stage. The departure gaps will be the same as for Legs 2 & 3.

**The Clerk of the Course may change the provided order, for reason of force majeure.**

All the competitors are allowed to join the start of the selective sections by trailer under the following conditions:

- Competitors must follow the same route as it is described in the Road Book
- Competitors must take the start at the TC Road Section (Service Out) at their allocated time
- Competitors must switch on tracking and navigation (GPS) systems
- Competitors must respect the speed limits

## 14. ROAD BOOK AND NAVIGATION

The road book for the stage will be distributed to each rider every morning. The exact location and time will be announced

by means of a Bulletin.

The Road Book is produced and controlled by professionals. No claim can be made against information found in the Road Book.

The Organizer has established the use of Waypoints as defined by article 80.11 of the 2021 FIM Cross-Country Rallies World Championship Regulations.

Opening Radius, Validation Radius and Penalties for missed WP are as below:

	Waypoint	Rayon d'ouverture/Opening Radius	Rayon de validation en mètres/Validation Radius in metres	Pénalité pour WP manqué/Penalty for missed WP
Navigation WP	WPE	Prev (1000 m)	90	15 minutes
	WPN	800 m	200	60 minutes
	WPM	800 m	90	15 minutes
	WPS	1000 m	90	15 minutes
	WPC	none	200	15 minutes
	PC	Prev (1000 m)	90	15 minutes
Start/Finish Zone WPI/ WP Zone Départ/Arrivée	WPV	open	200	15 minutes
	DSS	Prev (1000 m)	200	Leg penalties/Pénalités d'Etape
	ASS	800 m	90	Leg penalties/Pénalités d'Etape
	SZ	1000 m (Prev)	90	15 minutes
	FZ	Prev (1000 m)	90	15 minutes
	SN	1000 m (Prev)	90	Leg penalties/Pénalités d'Etape
	FN	Prev (1000 m)	90	Leg penalties/Pénalités d'Etape

*Prev (1000 m)* = previous waypoint or within a radius of 1000 m if the previous waypoint was missed.  
= waypoint précédent ou dans un rayon de 1000 m si le waypoint précédent a été manqué.

*1000 m (Prev)* = within a radius of 1000 m or previous waypoint, whichever distance is shorter.  
= dans un rayon de 1000 m ou waypoint précédent selon la distance la plus courte.

## 15. SERVICING AND REFUELLING

According to 2021 FIM Cross-Country Rallies World Championship article 80.18.

Repairs on the Road Sections or Selective Sections of a machine still in the race can be done only by the rider himself or vehicles/persons officially entered in the race. All infractions will incur penalties up to and including disqualification from the race.

A rider is responsible for his assistance.

The location of Service Areas will be indicated during scrutineering. Machines must have sufficient fuel range to cover at least 125 kms (+ 10%). At the refueling point only the rider or his assistance can refuel. It's the responsibility of the rider to bring his fuel at the refuelling zone. No neutralisation at the refuelling.

Only vehicles and their crew identified as "Service" can enter this area and work on the motorcycle.

The maximum speed allowed in the Service Park is 30km/h.

The following are forbidden, on pain of penalties up to and including disqualification:

- The transport of parts and/or personal effects or assistance, transport or towing by a vehicle and/or a person other

than a car, motor bike, truck officially entered in and still in the race and their crew.

- All assistance in an enclosed place, closed or guarded, even if this place is situated within the area of the Service Park. A tent is not considered as an enclosed place.
- Driving in the opposite direction to the race in a Service Park is forbidden. If the rider goes beyond the location of his crew, he must go back with the vehicle turned off and pushed by hand. Failure to comply with this article will result in disqualification.

## 16. TRAFFIC

Throughout the Rally, riders must strictly observe the Road Traffic Code of the Country.

## 17. MARATHON STAGE

N/A

## 18. INSURANCE

**According to the Regulations of FIM Cross-Country Rallies World Cup.**

- Assistance vehicles, even with Rally ID, may under no circumstances be considered as event participant. Under these conditions, they will not be covered by the event insurance and will circulate under the full responsibility of its owner.
- Riders must own a personal accident insurance.
- **SAME AS WELL AS THE ORGANIZATION COMMITTEE OF THE EVENT, DISCLAIM ALL LIABILITY FOR ALL ACCIDENTS THAT MAY HAPPEN DURING THE EVENT.**

## 19. ADMINISTRATIVE OBLIGATIONS

**The Document Checks process will be only online. Riders must send copies of the required documents:**

- Competition License
- Passport or ID Card (for KSA Riders)
- Driving License
- Registration documents of the Machine
- Insurance Certificate

**After completing the entry form, all riders must send, in a single mail, all the mandatory documents with the email subject:**

**Hail Rally 2021 – Entry Rider XX (identify the Rider Name).**

At the Document Checks, all the original documents must be shown for their inspection.

It is mandatory to present to the Officials/Srutineers the helmet or helmets which must be FIM Homologated.

### **19.1 Location**

#### **Secretariat will be at:**

From December 5<sup>th</sup> at 10.00 h. to the closure of the event at: HAIL RALLY 2021 – Millenium Hotel Hail – Al Khotta Road, North Hail.

**Scrutineering will take place at:** Hail Technical College

## **20. CLASSIFICATIONS**

### **20.1 List of Prizes - Cups**

#### **Overall Standings**

<b>MOTO/QUAD</b>
1 <sup>o</sup> Classified
2 <sup>o</sup> Classified
3 <sup>o</sup> Classified

#### **All categories and classes (Moto; Quad; Women; Junior; Veteran)**

<b>ALL CATEGORY</b>
1 <sup>o</sup> Classified
2 <sup>o</sup> Classified
3 <sup>o</sup> Classified

### **20.2 Ceremony**

Trophy-giving will take place at 19.00 h. on Saturday, December 11<sup>th</sup> 2021, in tbc.

Riders that have won prizes and trophies who do not attend the Trophy-giving and Podium Ceremony will forfeit their right to.

## **21. COMPULSORY EQUIPMENT RENTAL**

### **21.1 GPS & Vehicle to Vehicle Alarm System**

GPS and Vehicle to Vehicle Alarm system will be provided by the company ERTF.

Competitors must contact directly ERTF for the rental application of this equipment:

Email: [competition@ertf.com](mailto:competition@ertf.com)

It is reminded that rental fees / guarantee deposit are not included in the event entry fees.

### **21.2 Tracking System**

All vehicles must only be fitted with the Safety Tracking System(s) provided by the company MARLINK.

The instruction for the use of the Tracking System is in the Appendix 5 of these Supplementary Regulations.

Competitors must contact directly MARLINK for the rental application of this equipment:

Email: [valentin.bourdon@marlink.com](mailto:valentin.bourdon@marlink.com)

It is reminded that rental fees / guarantee deposit are not included in the event entry fees.

**21.3** The misuse of any of these systems implies a penalty of 5minutes. Repeated mis use of the system (more than once) implies disqualification. Failure to use the GPS system implies disqualification.

## 22. ITINERARY

See Appendix IV for the detailed itinerary.

**Overall SS distance and total distance of the itinerary:**

SS distance:	tbc km.
Total distance:	tbc km.
Number of Legs:	4
Number of Selective Sections:	4

It is absolutely forbidden, under penalty of disqualification, to circulate out of the itinerary, except when it is blocked. In that case, riders should pass along the obstacle and return to track as soon as possible.

### 22.1 Departure Park

After Scrutineering, there will be no Parc Fermé.

### 22.2 Final Parc Fermé

Parc Fermé will be located in a specific area of the Service Park, at the Millenium Hotel. All vehicles will have to enter Parc Fermé at the end of the Leg 4.

### 22.3 Regrouping Park

Not applicable.

### 22.4 SS Start Procedure

System description:



Shows Race Number and last 15 seconds countdown



Shows Race Number and GO word – GO blinking during 3 seconds

## 22.5 Track Check / Passage Controls

Along the route there will be installed some track Checks / Passage Controls without the need to stop.  
The details of these points will be indicated by means of a Bulletin.

## 22.6 Maximum Stage Times

For each Selective Section a Maximum Time authorized and a Fixed Penalty for the respective Sections are specified as below:

	Leg 1	Leg 2	Leg 3	Leg 4
TIMES	SS1 HH:MM	SS2 HH:MM	SS3 HH:MM	SS4 HH:MM
Maximum time	Tbc	tbc	tbc	Tbc
Fixed Penalty	tbc	tbc	tbc	tbc

Maximum time allowed may be modified by the Jury upon the proposal of the Clerk of the Course in case of non-predictable circumstances (climate, modifications in section distance, etc.).

The times to be considered and added in the Selective Sections are specified below:

	December 8th	December 9th	December 10th	December 11th
TIMES TO BE ADJOINT IN THE SELECTIVE SECTIONS	SS1 HH:MM	SS2 HH:MM	SS3 HH:MM	SS4 HH:MM
Finish inside the Maximum Time	Time made	Time made	Time made	Time made
Taking the start but don't finish in the Maximum Time.	Maximum Time of the Selective Section.	Maximum Time of the Selective Section.	Maximum Time of the Selective Section.	Maximum Time of the Selective Section.
Taking the start but leaving the stage before the end.	Three (3) hours for having left the stage + Maximum Time of the Selective Section + the value of all unconfirmed waypoints.	Three (3) hours for having left the stage + Maximum Time of the Selective Section + the value of all unconfirmed waypoints.	Three (3) hours for having left the stage + Maximum Time of the Selective Section + the value of all unconfirmed	Three (3) hours for having left the stage + Maximum Time of the Selective Section + the value of all unconfirmed
Not taking the Start	Six (6) hours for not taking the start + Maximum Time of the Selective Section + the value of all the waypoints not validated.	Six (6) hours for not taking the start + Maximum Time of the Selective Section + the value of all the waypoints not validated.	Six (6) hours for not taking the start + Maximum Time of the Selective Section + the value of	Six (6) hours for not taking the start + Maximum Time of the Selective Section + the value of

## 23. PARC FERMÉ

23.1 The access to the Par Fermé is strictly prohibited to all persons except Jury Members, Technical Stewards, Race Director, Environmental Stewards, Parc Fermé Officers and riders. The riders only have access to Parc Fermé to place and remove the vehicles. The operation shall be carried out without delay, and the riders shall leave the Parc Fermé as soon as possible.

23.2 Vehicles will be removed from Parc Fermé **only with permission of the Race Director/Clerk of the Course**.

23.3 Vehicles placed in Parc Fermé, are not required to have their own side stand, but must be on top of an Environmental Mat (appropriate to the vehicle size), (according to art 6.1 FIM Code). They should remain outdoors without any type of cover.

## 24. BRIEFING

Regarding the “different” times in which we live, due to the global pandemic of COVID-19, the usual Briefing with the Race Director/Clerk of the Course will not take place. It will be delivered a document with the rest of the documentation. All requests for additional information must be made individually to the competitor's relation or to the clerk of the course.

## 25. SPEED CONTROL ZONES - DZ

25.1 GPS control System will check instant speed in all the liaison tracks and in the previously defined track in the SS, within the DZ.

25.2 The GPS equipment provided by the organization which must be fixed to the handlebar will warn the riders of the beginning and end of the DZ.

## 26. SAFETY

It is mandatory to place, in visible place, the sticker with the SOS phone number.  
The Emergency Number will be informed by means of a Bulletin.

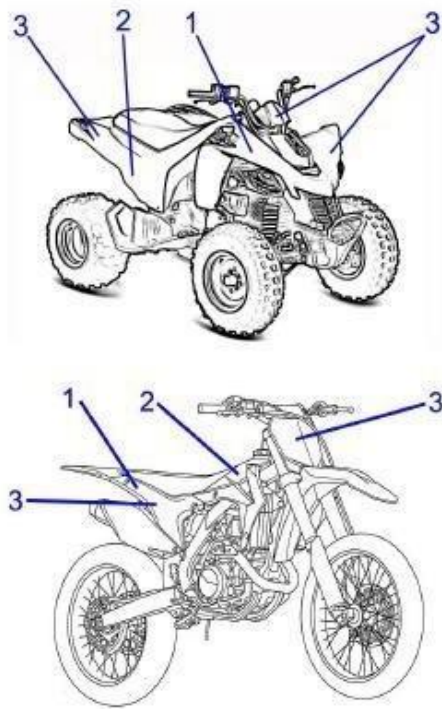
## 27. MAXIMUM PERMITTED LATENESS

During the Event, in all CP and Security Control Passage, a rider can be stopped for security reasons.

## 28. CRO

TBA

## APPENDIX I – ADVERTISING SPOTS



- i. Competition logos
- ii. Compulsory Advertising
- iii. Race numbers
- iv. SOS Number



## APPENDIX II – ROADBOOK SYMBOLS

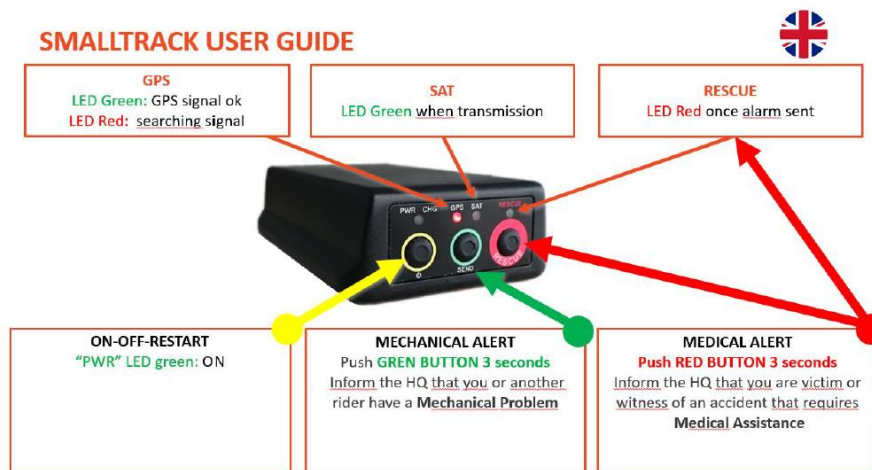
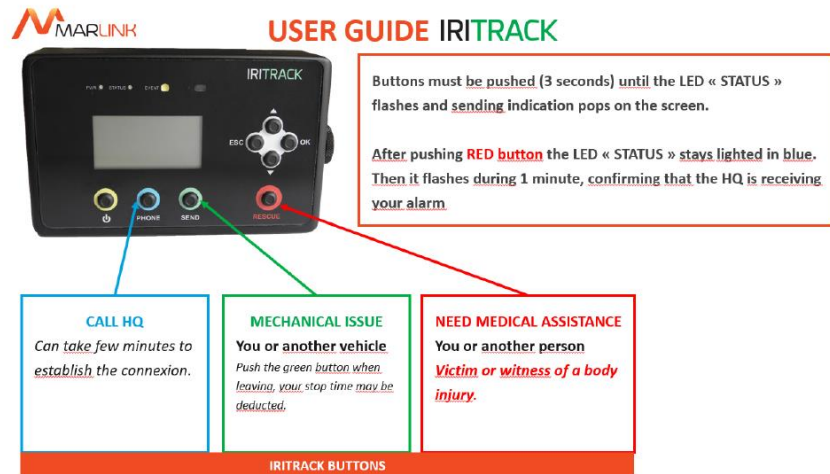
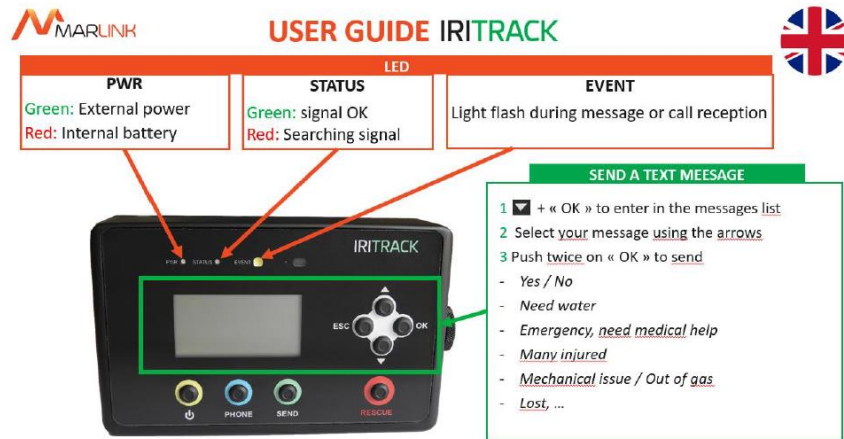
tbc

## APPENDIX III - EQUIPMENT

1. All riders must have:
  - a. FIM Homologated helmet; Competition Boots; Gloves; Googles
  - b. Protection wear of suitable resistant material and covering all members
  - c. Roadbook support
  - d. Camelbag

## APPENDIX IV - ITINERARY

## APPENDIX V – TRACKING SYSTEM



## APPENDIX VI – GPS AND VEHICLE TO VEHICLE ALARM SYSTEM

### MEMO GPS UNIK 2 RALLYE RAID – VERSION 2020

AUTO/CAMION

!!! The information will be valid only if there is no bell at the top of the screen !!!

#### GPS activation



Switch on/off

The bell 🛑 : Satellites reception indicator. Appears during a few seconds after switch on. If blinking or not disappears, check that the antenna and its cable are connected and not damaged.

The battery 🔋 : Must appear. If blinking, there is a bad connection to the power supply of the vehicle.

#### Odometer function ODO

Automatic adjusting at each waypoint (except WPC).



TOTAL direct adjusting in hundreds meters

PARTIAL reset to 0

Backward (Odometer decrementing)

#### Daily code

4 digits code given by organization.

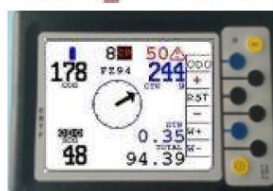
Unlock the stage of the day.



To enter the code:  
- Press COD from INI page  
- Press CD1  
- Enter the code using the arrows, + and -  
- Validate by ENT  
- Press INI to come back to the main screen

#### Speed limit

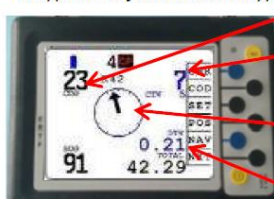
Symbol ⚠️ : When appears, the GPS checks the max speed



Symbol ⚠️ (DZ), the GPS:  
- check the speed in the zone (30, 50 or 90 km/h).  
- blinks, rings and registers if overspeed.  
It stops when the waypoint FZ is passed.

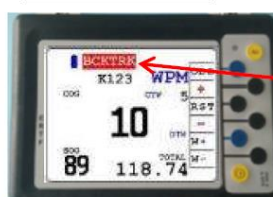
#### Navigation: Press INI to go to this page

Navigation information in the visibility radius of the target waypoint or for a visible waypoint:



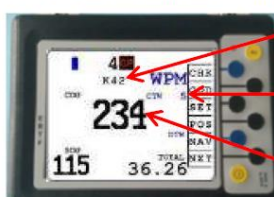
COG : Course followed by vehicle  
CTW : Direct course to the waypoint  
Arrow: indicates the direction to follow to the target waypoint  
DTW : Direct distance to waypoint in km

#### Backtrack (BCKTRK)



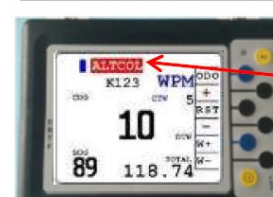
Warns the competitor that he returns to his track (+ the buzzer rings)

Navigation Information concerning WPM (masked waypoints) when outside unmasked radius:



Name of the target waypoint  
Number of the target waypoint  
COG : Course followed by vehicle

#### Collision warning (ALTCOL)



Warns the competitor that another vehicle arrives in the inverse direction unless 200m (+ the buzzer rings).

A waypoint is validates when the vehicle is in the radius defined for this waypoint (300m, 200m, 90m or 50m). The GPS switches automatically to the next waypoint.

#### Change a waypoint

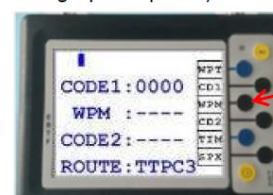
If a waypoint can't be reached or if you don't want to reach it, press NXT on the INI screen:



W+ : to go to the next waypoint  
W- : to come back to the previous waypoint  
Take more importance in the waypoint's name instead of its number.

#### Releasing code WPM

Given by organization (PC course).  
Using it pulls a penalty.



To turn hidden waypoints into visible waypoints and so to have all the navigation information.



!!! The information will be valid only if there is no bell at the top of the screen !!!

### Sentinel function

#### Overtaking

You want to overtake: press for a long time (more than 2s) on the push-button to send a signal to the vehicle ahead (less than 200m).



Somebody wants to overtake you: you hear  
**Beep beep beeeep – Beep beep beeeep**  
Get ready to let the vehicle pass a.s.a.p.



To inform the vehicle which wants to overtake that you have heard is signal and that you are going to let him pass a.s.a.p.  
Press briefly the push-button (less than 2s - which cuts the sound in the cockpit)

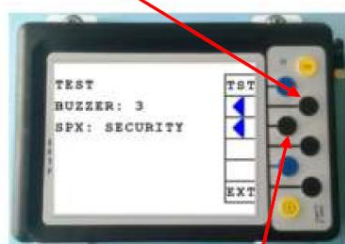
If you don't acknowledge receipt of the signal, an acknowledgement of receipt is automatically sent at the end of 6s.



#### Buzzer volume

From main navigation screen, press SET key and then SENTINEL key

3 positions: 1 / 2 / 3



« Speedox » function: sound indication in speed control area

From main navigation screen, press SET key and then SENTINEL key

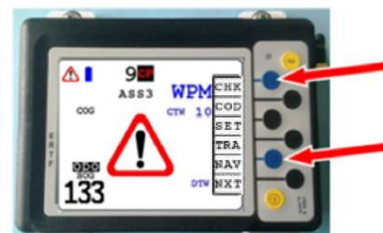
3 positions : SECURITY / PERFORMANCE / OFF

SECURITY mode		PERFORMANCE mode		OFF mode
2 beeps per second from the speed limit – 5 km/h	Continuous sound from the speed limit – 3 km/h	1 beep by minute from the speed limit – 4 km/h	Continuous sound from the speed limit – 2 km/h	No sound signal

#### Accident

If you breakdown or if you have a crash in a dangerous place (after a turn or a dune): press both blue keys simultaneously or red Alarm button, you will send a signal to the competitors maximum 250m around regarding the ground.

To stop it, press again both blue keys simultaneously or red Alarm button



There is an accident near by : you hear  
**Beeeeep – beeeep – beeeep**  
flash blinks and GPS shows:



Flash  
Optional

To stop the sound during (30 seconds) in the cockpit  
Press briefly the push-button (less than 2s)

