

---

**Date:** 14.7.2022 **Time:** 15:40 hrs

**Subject:** BULLETIN NO: 3 **Document No:** 1.3

---

**From:** The Stewards

**To:** All competitors / crew members  
Number of pages: 3 Attachments: 1 (4 pages)

---

## 1. 2022 FIA WRC Sporting Regulations

Following the decision of the WMSC meeting of 29 June 2022, the 2022 FIA WRC Sporting Regulations are changed as follows with immediate application:

### 55.1.1

The car of any FIA priority driver wishing to re-start must be serviced in the rally service park. After retirement, the vehicle must remain where it has retired until permission has been received from the Clerk of the Course to remove it directly to the parc fermé.

Cars of P1/P4 drivers may be brought directly to their service area and wait under Parc Fermé conditions until the FIA Technical Delegate gives authorisation to repair it or not.

Service of retired cars of any FIA priority driver must respect all the relevant conditions of these regulations. The car may be removed once for service at any time from the parc fermé for a maximum of 3 hours, **4 hours for P1 cars**, (including the 45' flexi-servicing and any maximum lateness allowed between two time controls). However, all cars must be returned to the parc fermé at least 4 hours before the start of the next section after an overnight regroup.

**For P1 cars, the 4-hour period can be split in 2 periods of time, the amount of time per period is at the discrepancy of the team.**

## APPENDIX XIV - HIGH VOLTAGE OPERATIONAL SAFETY

### 9 QUARANTINE AND RECOVERY

#### 9.1 Quarantine

If a Rally1 car is in an unsafe situation (**red light**, fire or a severe accident) so that the driver is unable to re-join the special stage, the recovery team shall intervene to transport the car to an isolated and safe place to enable technical teams and firefighters to work on the car.

Any Rally1 car in quarantine must not remain unattended and a fire truck must be nearby ~~because the status of a failed, damaged or burnt car can be unstable, even if the fire seems to be totally extinguished.~~

Once the car has been deemed officially "retired" by the Clerk of the Course, the team will be authorised by the FIA E-Safety Delegate to enter the quarantine zone to work on the car.

**Once in a quarantine state, the car will be handed over to the team under the supervision of the FIA E-Safety Delegate. The car safety state will be evaluated by the FIA E-Safety Delegate and the team-nominated person (see Article 4.4). Both will sign the FIA "handover form" to officially release the car (form available upon request from the FIA E-Safety Delegate).**

The requirements for the quarantine zone are listed in a dedicated FIA document. It is aimed at defining the organisation, setting up and equipment of the quarantine zone for the special stage and remains available upon request to the FIA.

The selection of the zone and the implementation of the quarantine shall be done under the supervision of the FIA E-Safety Delegate and Safety Delegate.

#### 9.2 Recovery supervision

**The recovery operations to take an unsafe car, or a car that has sustained a severe impact, to the quarantine zone, shall always be made under the supervision of the FIA E-Safety Delegate.**

**As an exception to the above, the FIA E-Safety Delegate with the support and agreement from the Clerk of the Course may place a car in a temporary quarantine at the location where the car has stopped. The car will be secured by local resources (marshals, TIV, etc.) and the FIA E-Safety Delegate will be able to move to the next stage. Once the HV safety nominated person (Article 4.4) is at the scene, he will sign the FIA handover form and take over responsibility for the car. The team will therefore be in charge of supervising the entire recovery operation from the car loading on to the truck, following the truck on the road, and up to the unloading process of the car. In such cases, the team can decide to bring the car to the quarantine zone or its service bay.**

**2. Amendments to the Supplementary Regulations of the rally**

**2.6 FIA Delegates**

Media Delegate

~~Mr. Richard Rodgers~~ Mr. Nick Garton

**2.7 Senior Officials**

Deputy Chief Medical Officer (DCMO)

~~dr. Annika Uue~~ dr. Maris Tustit

**3.2 Schedule during the rally week**

<b>Sunday 17 July</b>		
<b>6:20</b>	<b>6:18</b>	Start of Section 6
		Parc Ferme OUT

**12.13.8 Driving direction in Service Park**

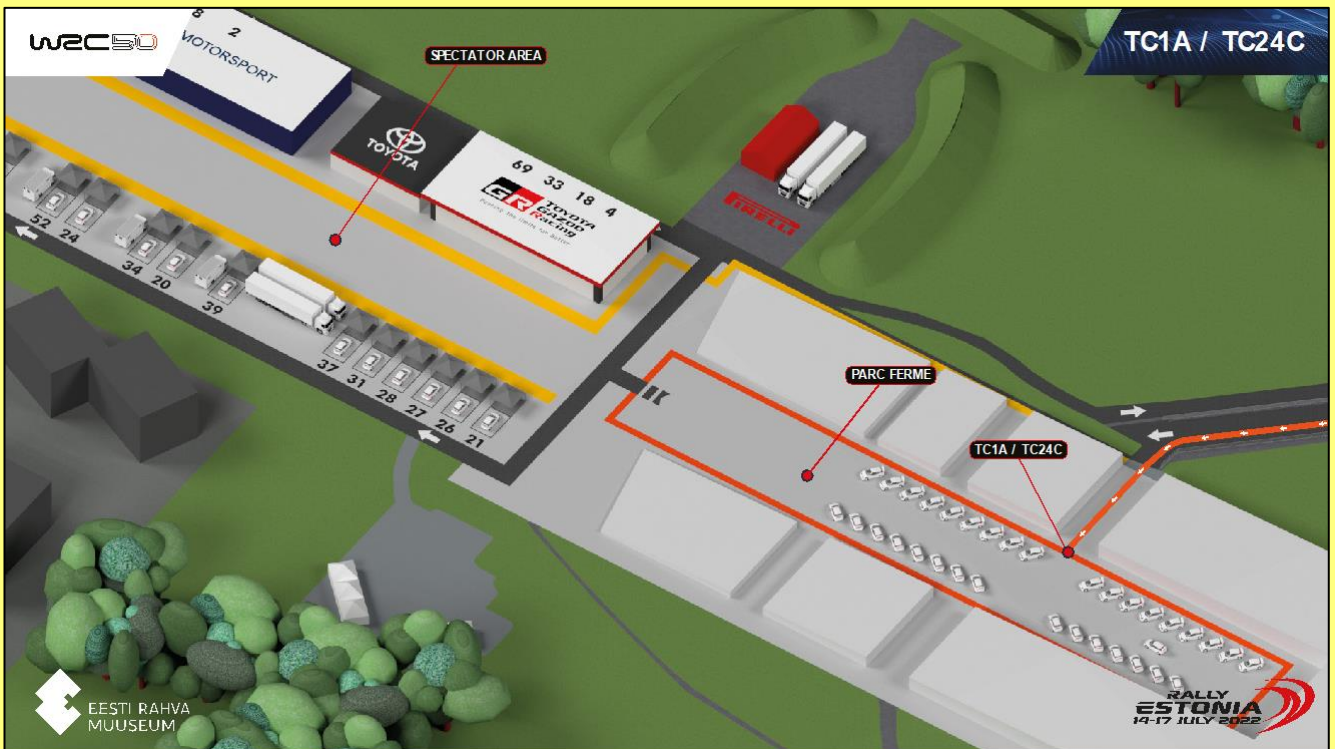
The driving direction in Service Park is clockwise.

**APPENDIX 1 - Itinerary**

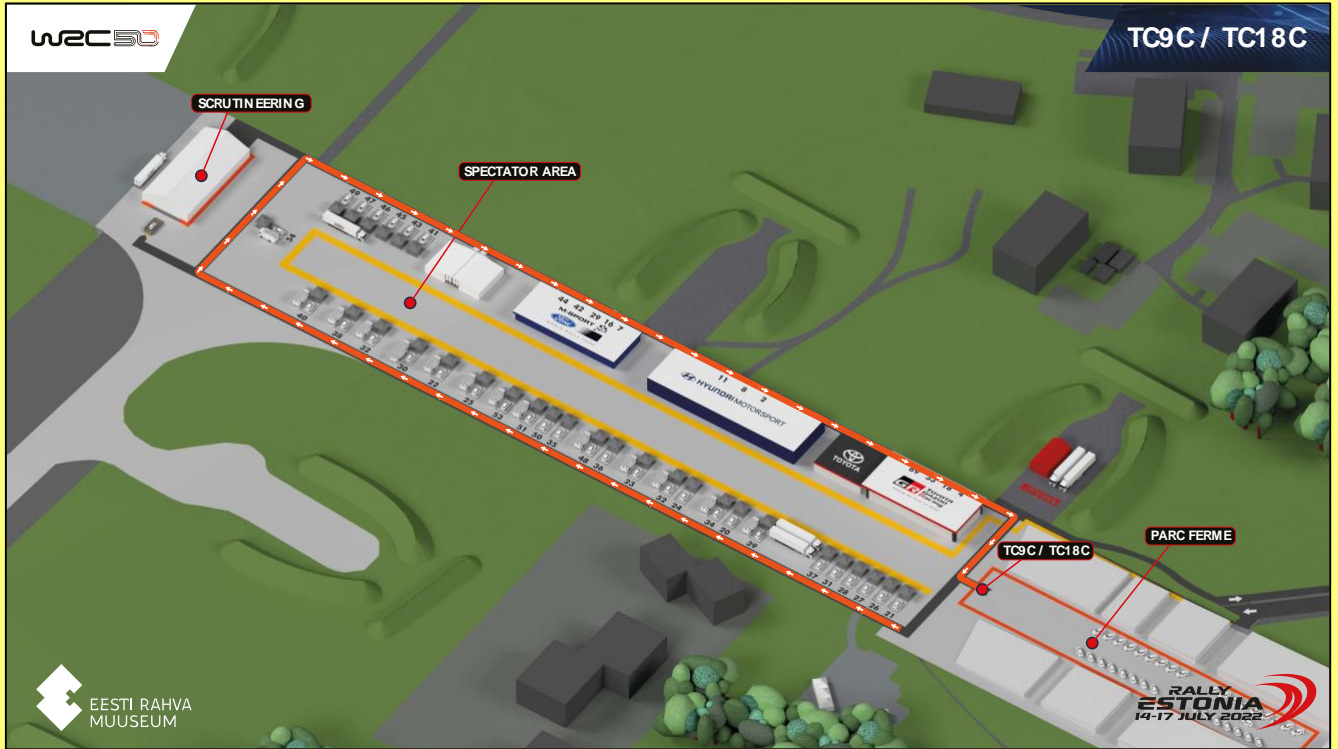
The Itinerary has been modified (new start time for Section 6, new target times for SS19 and 22, regroup before SS22 shortened by 2'). New Itinerary is in **Attachment 1**. The time cards are amended accordingly, new time cards are given to all competitors.

**3. Amendments to the Road Books**

- RB 1 page 99 box 20 and page 159 box 20: HEV sign to be added.
- RB 2 page 233 to be replaced by the following drawing:



- RB 1 page 180 and RB 2 the new page added by Bulletin 2 (between pages 130 and 131) to be replaced by the following drawings:



Edoardo Delleani  
The Stewards

François Dumont

Juhan Mänd

**Itinerary (Appendix 1 of the Supplementary Regulations)**

Rally Estonia 14-17 July 2022						
<b>SD</b>		<b>THURSDAY 14 JULY</b>		Sunrise	4:28	Version 2.5
				Sunset	22:09	13.7.2022
TC/SS	LOCATION	SS dist.	Liaison Dist.	Total dist.	Target time	First car due
Service Park OUT (Raadi)						
<b>RZ</b>	Refuel Raadi					
<b>SD</b>	Distance to next refuel	<b>(6,23)</b>	<b>(80,68)</b>	<b>(86,91)</b>		
TCSD	SD TC in / Technical Zone		42,45	42,45		8:56
<b>SD</b>	<b>SHAKEDOWN Abissaare</b>	<b>6,23</b>				<b>9:01</b>
		Service Park IN (Raadi)		38,23	44,46	
<b>SD TOTALS</b>		<b>6,23</b>	<b>80,68</b>	<b>86,91</b>		
<b>THURSDAY 14 JULY</b>		<b>START - Section 1</b>		Sunrise	4:28	Version 2.5
				Sunset	22:09	13.7.2022
TC/SS	LOCATION	SS dist.	Liaison Dist.	Total dist.	Target time	First car due
	Ceremonial Start - Podium (Tartu)					<b>18:30</b>
0	SP OUT ERM					<b>20:21</b>
<b>RZ</b>	Refuel Raadi					
<b>1</b>	Distance to next refuel	<b>(1,66)</b>	<b>(3,39)</b>	<b>(5,05)</b>		
1	ERM		1,46	1,46	0:12	20:33
<b>SSS1</b>	<b>Visit Estonia Tartu 1 (Live TV)</b>	<b>1,66</b>				<b>20:38</b>
1A	Parc Ferme IN (Early check-in permitted)		1,93	3,59	0:13	20:51
<b>THURSDAY TOTAL</b>		<b>1,66</b>	<b>3,39</b>	<b>5,05</b>		

**Bulletin 3, Attachment 1**

Rally Estonia 14-17 July 2022						
FRIDAY 15 JULY			Sunrise	4:30	Version 2.5	
Sections 2 and 3			Sunset	22:07	13.7.2022	
TC/SS	LOCATION	SS dist.	Liaison Dist.	Total dist.	Target time	First car due
1B	Parc Ferme OUT/Service A IN					<b>6:32</b>
<b>SERVICE A (Raadi)</b>		<b>(1,66)</b>	<b>(3,39)</b>	<b>(5,05)</b>	<b>0:15</b>	
1C	Service A OUT					6:47
<b>RZ</b>	<b>Refuel Raadi</b>					
<b>2</b>	<b>Distance to next refuel</b>	<b>(41,44)</b>	<b>(93,58)</b>	<b>(135,02)</b>		
2	Selgise		46,92	46,92	0:55	7:42
<b>SS2</b>	<b>Peipsiääre 1</b>	<b>24,35</b>				<b>7:45</b>
3	Kääpa		7,46	31,81	0:55	8:40
<b>SS3</b>	<b>Mustvee 1</b>	<b>17,09</b>				<b>8:43</b>
<b>RZ</b>	<b>Refuel Raadi</b>					
<b>3</b>	<b>Distance to next refuel</b>	<b>(28,15)</b>	<b>(146,85)</b>	<b>(175,00)</b>		
4	Raanitsa		77,26	94,35	1:40	10:23
<b>SS4</b>	<b>Raanitsa 1</b>	<b>21,45</b>				<b>10:26</b>
5	Vastsemõisa		34,72	56,17	1:00	11:26
<b>SS5</b>	<b>Vastsemõisa 1</b>	<b>6,70</b>				<b>11:29</b>
5A	Regroup & Technical Zone IN		74,07	80,77	1:29	12:58
5B	Regroup OUT & Flexi Service B IN				0:50	13:48
<b>FLEXI SERVICE B (Raadi)</b>		<b>(69,59)</b>	<b>(240,43)</b>	<b>(310,02)</b>	<b>0:30</b>	
5C	Service B OUT					14:18
<b>RZ</b>	<b>Refuel Raadi</b>					
<b>4</b>	<b>Distance to next refuel</b>	<b>(41,44)</b>	<b>(93,58)</b>	<b>(135,02)</b>		
6	Selgise		46,92	46,92	0:55	15:13
<b>SS6</b>	<b>Peipsiääre 2</b>	<b>24,35</b>				<b>15:16</b>
7	Kääpa		7,46	31,81	0:55	16:11
<b>SS7</b>	<b>Mustvee 2</b>	<b>17,09</b>				<b>16:14</b>
<b>RZ</b>	<b>Refuel Raadi</b>					
<b>5</b>	<b>Distance to next refuel</b>	<b>(28,15)</b>	<b>(146,85)</b>	<b>(175,00)</b>		
8	Raanitsa		77,26	94,35	1:40	17:54
<b>SS8</b>	<b>Raanitsa 2</b>	<b>21,45</b>				<b>17:57</b>
9	Vastsemõisa		34,72	56,17	1:00	18:57
<b>SS9</b>	<b>Vastsemõisa 2</b>	<b>6,70</b>				<b>19:00</b>
9A	Technical Zone IN		74,07	80,77	1:29	20:29
9B	Technical Zone OUT & Flexi Service C IN				0:10	20:39
<b>FLEXI SERVICE C (Raadi)</b>		<b>(69,59)</b>	<b>(240,43)</b>	<b>(310,02)</b>	<b>0:45</b>	
9C	Flexi service C OUT/ Parc Ferme IN (Early check-in permitted)					21:24
<b>All Cars (except re-starting crews) to be in Parc Ferme no later than</b>						<b>23:30</b>
<b>FRIDAY TOTAL</b>		<b>139,18</b>	<b>480,86</b>	<b>620,04</b>		

Section 2

Section 3

**Bulletin 3, Attachment 1**

Rally Estonia 14-17 July 2022						
SATURDAY 16 JULY			Sunrise	4:32	Version 2.5	
Sections 4 and 5			Sunset	22:06	13.7.2022	
TC/SS	LOCATION	SS dist.	Liaison Dist.	Total dist.	Target time	First car due
9D	Parc Ferme OUT/Service D IN					<b>8:00</b>
<b>SERVICE D (Raadi)</b>		<b>(0,00)</b>	<b>(0,00)</b>	<b>0:15</b>		
9E	Service D OUT					8:15
<b>RZ</b>	<b>Refuel Raadi</b>					
<b>6</b>	Distance to next refuel	<b>(22,00)</b>	<b>(93,62)</b>	<b>(115,62)</b>		
10	Metsalaane		38,34	38,34	0:45	9:00
<b>SS10</b>	<b>Elva 1</b>	<b>11,73</b>				<b>9:03</b>
11	Keeni		52,57	64,30	1:10	10:13
<b>SS11</b>	<b>Mäeküla 1</b>	<b>10,27</b>				<b>10:16</b>
<b>RZ</b>	<b>Remote Refuel Sihva</b>					
<b>7</b>	Distance to next refuel	<b>(24,68)</b>	<b>(85,15)</b>	<b>(109,83)</b>		
12	Rüa		10,51	20,78	0:45	11:01
<b>SS12</b>	<b>Otepää 1 (Live TV)</b>	<b>17,08</b>				<b>11:08</b>
13	Neeruti		29,23	46,31	0:51	11:59
<b>SS13</b>	<b>Neeruti 1</b>	<b>7,60</b>				<b>12:02</b>
13A	Regroup & Technical Zone IN		48,12	55,72	1:00	13:02
13B	Regroup OUT & Flexi Service E IN				0:48	13:50
<b>FLEXI SERVICE E (Raadi)</b>		<b>(46,68)</b>	<b>(178,77)</b>	<b>(225,45)</b>	<b>0:30</b>	
13C	Service E OUT					14:20
<b>RZ</b>	<b>Refuel Raadi</b>					
<b>8</b>	Distance to next refuel	<b>(22,00)</b>	<b>(93,62)</b>	<b>(115,62)</b>		
14	Metsalaane		38,34	38,34	0:45	15:05
<b>SS14</b>	<b>Elva 2</b>	<b>11,73</b>				<b>15:08</b>
15	Keeni		52,57	64,30	1:05	16:13
<b>SS15</b>	<b>Mäeküla 2</b>	<b>10,27</b>				<b>16:16</b>
<b>RZ</b>	<b>Remote Refuel Sihva</b>					
<b>9</b>	Distance to next refuel	<b>(26,34)</b>	<b>(88,00)</b>	<b>(114,34)</b>		
16	Rüa		10,51	20,78	0:45	17:01
<b>SS16</b>	<b>Otepää 2 (Live TV)</b>	<b>17,08</b>				<b>17:08</b>
17	Neeruti		29,23	46,31	0:51	17:59
<b>SS17</b>	<b>Neeruti 2</b>	<b>7,60</b>				<b>18:02</b>
18	ERM		49,04	56,64	1:01	19:03
<b>SSS18</b>	<b>Toyota Tartu 2</b>	<b>1,66</b>				<b>19:08</b>
18A	Technical Zone IN		1,93	3,59	0:12	19:20
18B	Technical Zone OUT & Flexi Service F IN				0:10	19:30
<b>FLEXI SERVICE F (Raadi)</b>		<b>(48,34)</b>	<b>(181,62)</b>	<b>(229,96)</b>	<b>0:45</b>	
18C	Flexi service F OUT/ Parc Ferme IN (Early check-in permitted)					20:15
<b>All Cars (except re-starting crews) to be in Parc Ferme no later than</b>						<b>23:00</b>
<b>SATURDAY TOTAL</b>		<b>95,02</b>	<b>360,39</b>	<b>455,41</b>		

Section 4

Section 5

**Bulletin 3, Attachment 1**

Rally Estonia 14-17 July 2022						
SUNDAY 17 JULY			Sunrise	4:33	Version 2.5	
Section 6, 7 and 8			Sunset	22:04	13.7.2022	
TC/SS	LOCATION	SS dist.	Liaison Dist.	Total dist.	Target time	First car due
18D	Parc Ferme OUT/Service G IN (Raadi)					<b>6:18</b>
<b>SERVICE G (Raadi)</b>		<b>0,00</b>	<b>0,00</b>	<b>0:15</b>		
18E	Service G OUT					6:33
<b>RZ</b>	Refuel Raadi					
<b>10</b>	Distance to next refuel	<b>(23,04)</b>	<b>(91,42)</b>	<b>(114,46)</b>		
19	ERM		1,46	1,46	0:12	6:45
<b>SS19</b>	<b>Tartu Vald 1</b>	<b>6,56</b>				<b>6:48</b>
20	Kaagvere		78,77	85,33	1:25	8:13
<b>SS20</b>	<b>Kanepi 1</b>	<b>16,48</b>				<b>8:16</b>
<b>RZ</b>	Refuel Sulaoja					
<b>11</b>	Distance to next refuel	<b>(15,95)</b>	<b>(70,04)</b>	<b>(85,99)</b>		
21	Maaritsa		17,86	34,34	0:45	9:01
<b>SS21</b>	<b>Kambja 1 (Live TV)</b>	<b>15,95</b>				<b>9:08</b>
21A	Regrouping IN		63,37	79,32	1:20	10:28
21B	Regrouping OUT				0:17	10:45
<b>RZ</b>	Refuel Raadi					
<b>12</b>	Distance to next refuel	<b>(23,04)</b>	<b>(91,34)</b>	<b>(114,38)</b>		
22	ERM		1,46	1,46	0:12	10:57
<b>SS22</b>	<b>Tartu vald 2</b>	<b>6,56</b>				<b>11:00</b>
23	Kaagvere		78,77	85,33	1:25	12:25
<b>SS23</b>	<b>Kanepi 2</b>	<b>16,48</b>				<b>12:28</b>
23A	Regrouping & Technical Zone Sulaoja IN		11,11	27,59	0:30	12:58
23B	Regrouping & Technical Zone Sulaoja OUT				0:58	13:56
<b>RZ</b>	Refuel Sulaoja					
<b>13</b>	Distance to next refuel	<b>(15,95)</b>	<b>(75,49)</b>	<b>(91,44)</b>		
24	Maaritsa		6,67	6,67	0:19	14:15
<b>SS24</b>	<b>Wolf Powerstage Kambja 2 (Live TV)</b>	<b>15,95</b>				<b>14:18</b>
24A	Podium Holding IN (Early check-in permitted)		65,60	81,55	2:22	16:40
	<b>Podium Tartu</b>					<b>17:00</b>
24B	Podium Holding OUT					
24C	Rally Finish – TZ & PF IN (Early check-in permitted)		3,22	3,22	0:15	
<b>SUNDAY TOTAL</b>		<b>77,98</b>	<b>328,29</b>	<b>406,27</b>		

TOTALS OF THE RALLY				
	SS	Liaison	Total	%
Thursday 14 July / Sections 1	1,66	3,39	5,05	32,9%
Friday 15 July / Sections 2, 3	139,18	480,86	620,04	22,4%
Saturday 16 July /Sections 4, 5	95,02	360,39	455,41	20,9%
Sunday 17 July /Sections 6, 7, 8	77,98	328,29	406,27	19,2%
<b>TOTAL - 24 SS</b>	<b>313,84</b>	<b>1172,93</b>	<b>1486,77</b>	<b>21,1%</b>