



FORD FIESTA SPRINT CUP



Welcome

FORD FIESTA
SPRINT CUP-NL
FORD FIESTA
SPRINT CUP-BE

Race Director Team:

Jaap Molmans
Bobbe Veldkamp
Max Braams
Annemieke Veldkamp

Stewards:

John Raven / Guy Dabie
John Timmers

Secretary of the meeting


Ria Waterreus

Team Relations:

Wim Cools
Koen Wijckmans

Promotor:

Renata Aartsen
Dick van Elk

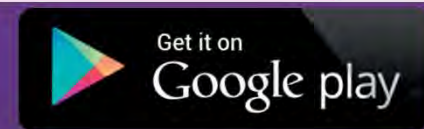
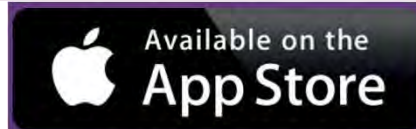


Sportity

For direct event information please download the Sportity app and insert this password:

FFSC2022
VRM2022

Time schedule V8



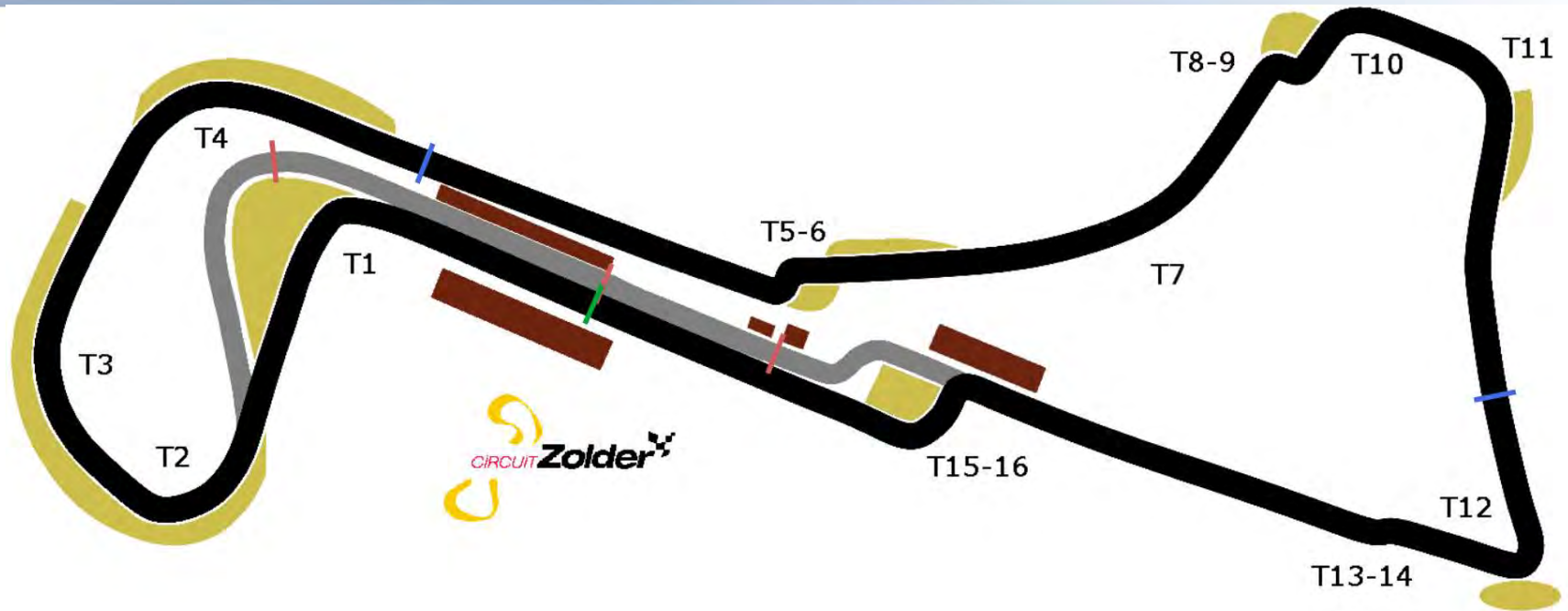
Review Zandvoort

FORD FIESTA
SPRINT CUP-NL
FORD FIESTA
SPRINT CUP-BE

- Speeding Full Course yellow during practices(3 times)
- Window net has to fixed at all times
- Compliments for the good races
- Feedback from your side?

The Circuit

FORD FIESTA
SPRINT CUP-NL
FORD FIESTA
SPRINT CUP-BE



Circuit Zolder

- Length: **4.000** meter
- Direction: **Clockwise**
- Start: **Standing start**
- Pole Position: **Left Side**
- Pit Exit: **Exit of Turn 1, track right**
- Penalty Area: **Underneath Podium,**
- Pitlane Speed: **60 KM/H**

No engine running

SATURDAY

BETWEEN 12.00H-13.00H

AFTER 18.00H

SUNDAY

BEFORE 10.00H

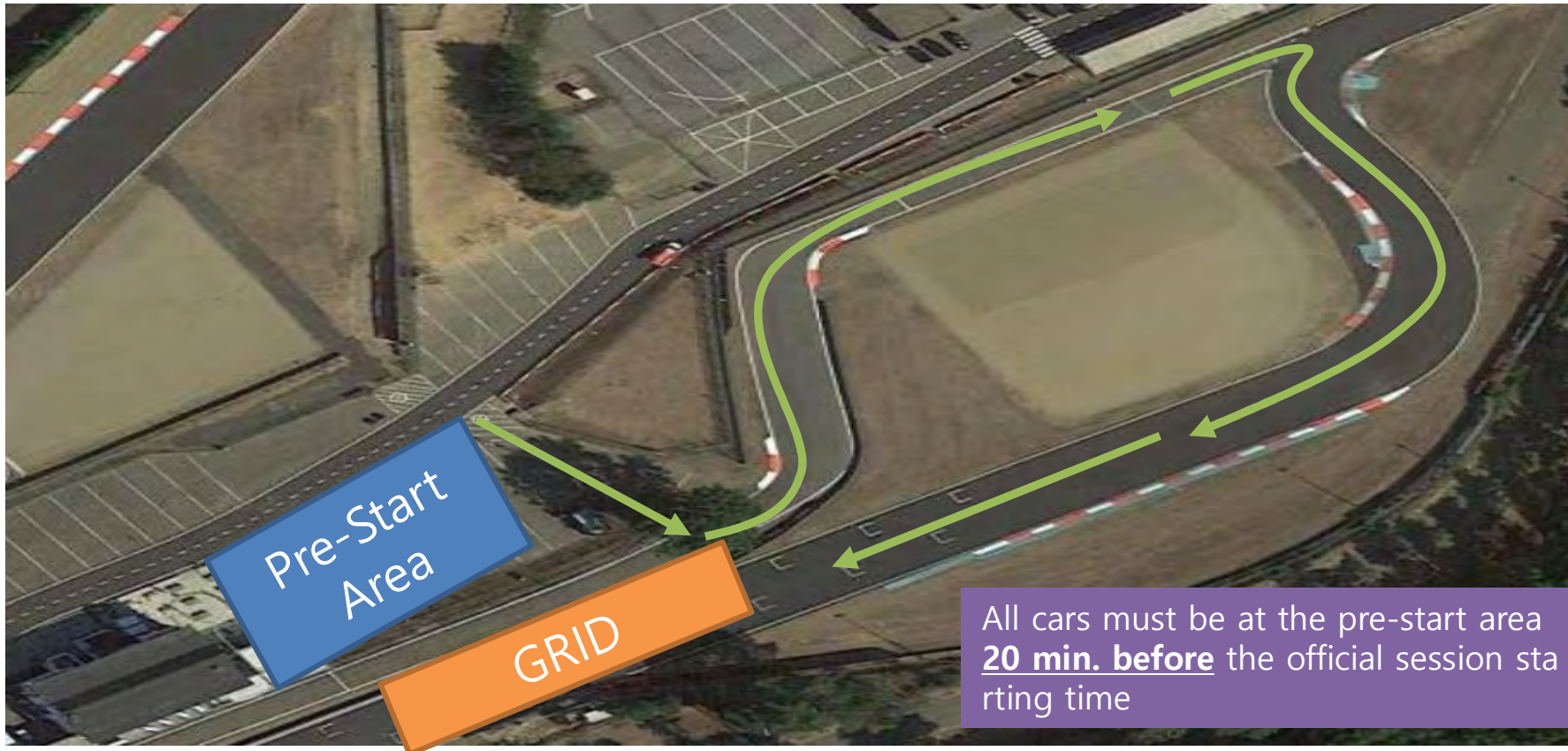
Logistics (Training)

FORD FIESTA
SPRINT CUP-NL
FORD FIESTA
SPRINT CUP-BE



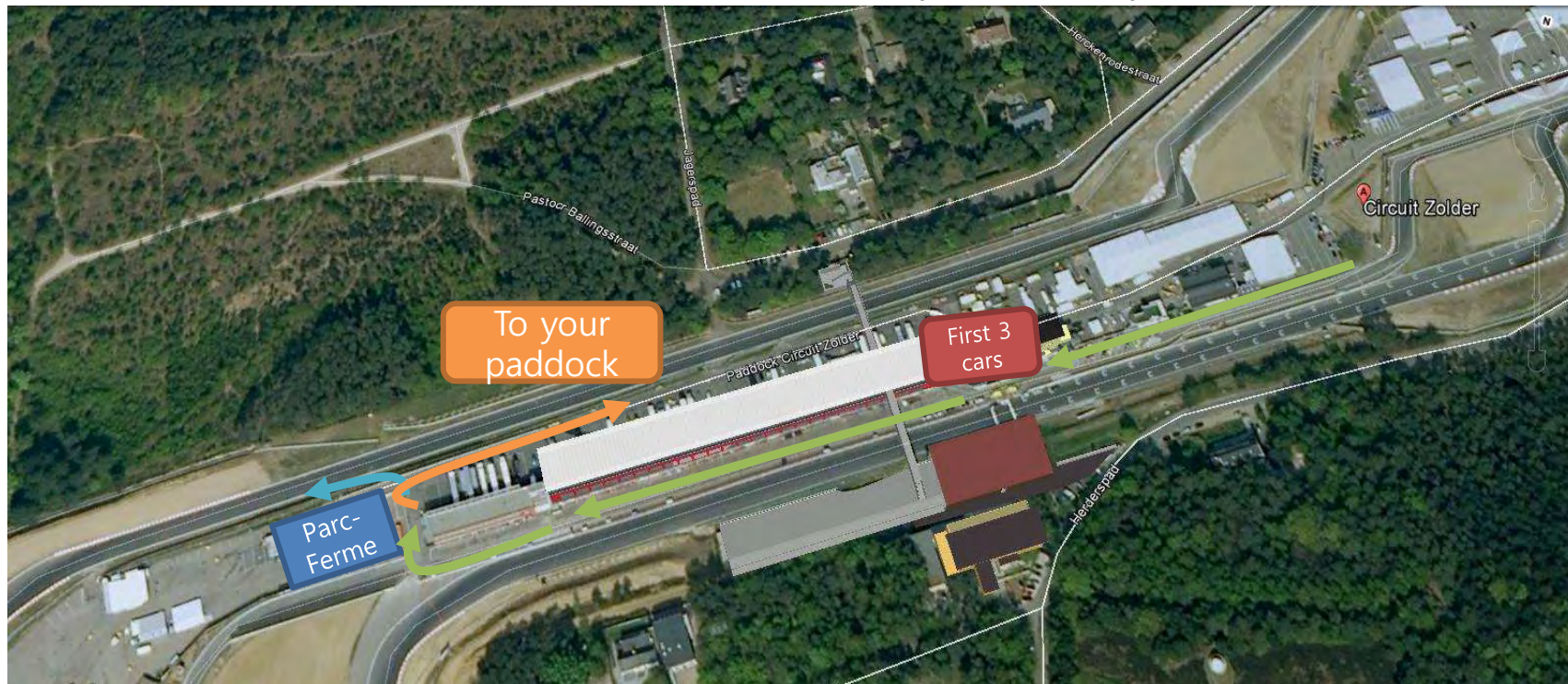
Logistics (RACE)

FORD FIESTA
SPRINT CUP-NL
FORD FIESTA
SPRINT CUP-BE



Off Track after session

- After the chequered flag → Full cooldown lap
- Qualification and races → go to Parc Ferme
- First 3 cars stop under the podium and must immediately be driven by a team member to Parc Ferme



Pitlane and Points of Interest

FORD FIESTA
SPRINT CUP-NL
FORD FIESTA
SPRINT CUP-BE



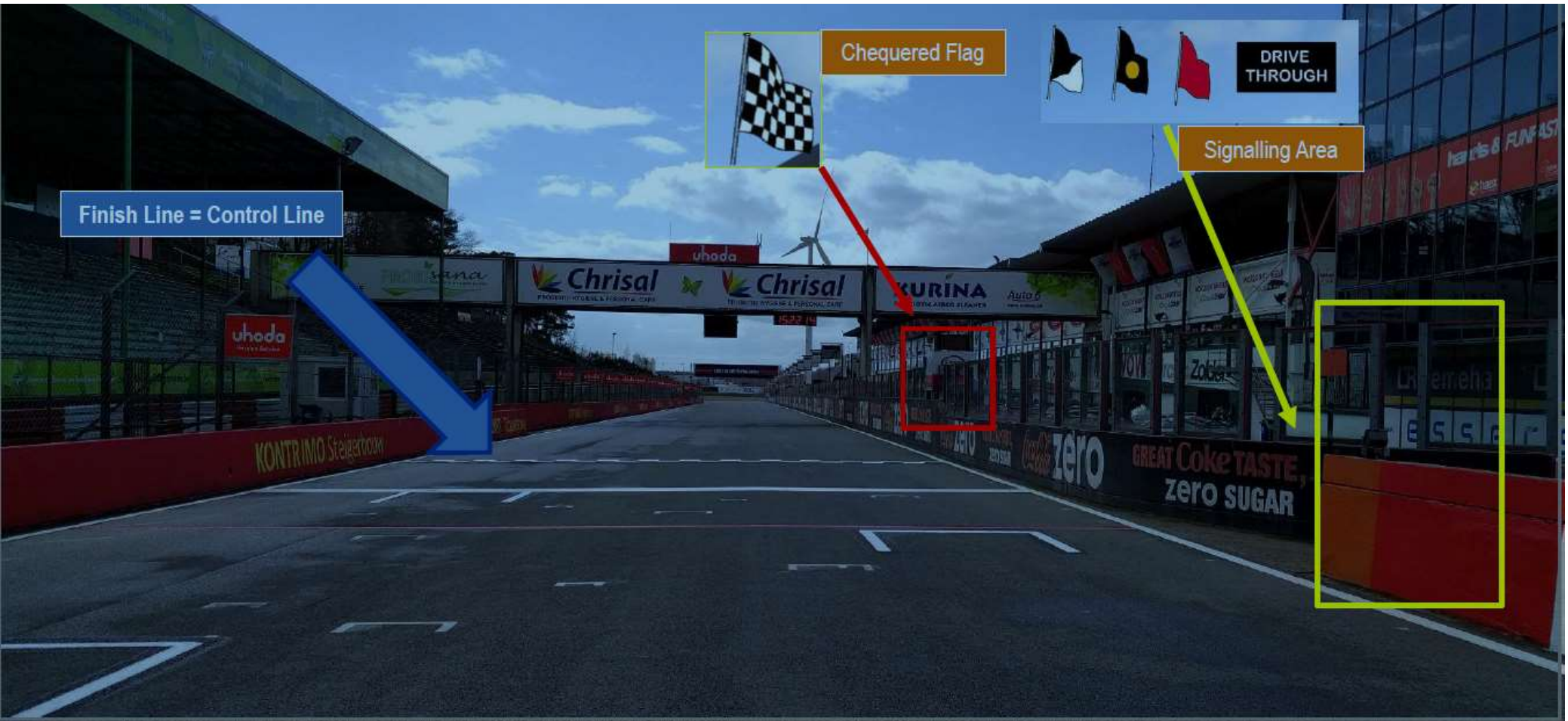
Pit In

end

start



Finish Control Line | Signalling Area



Penalty Box



- Technical Flag (Meatball)



- Black Flag



~~- Warning Flag~~

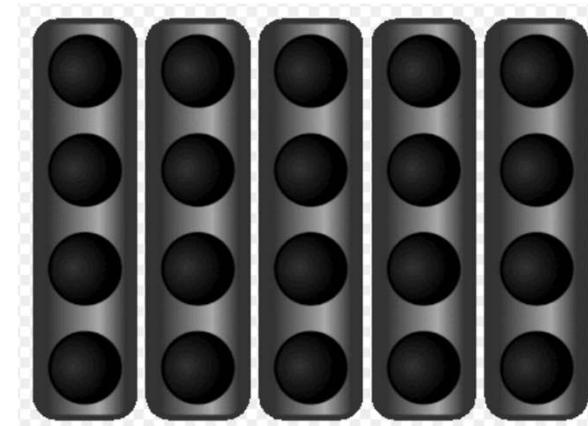
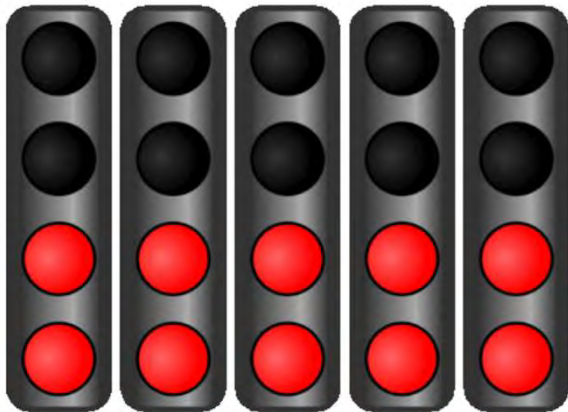
White Line Pit Lane Exit

FORD FIESTA
SPRINT CUP-NL
FORD FIESTA
SPRINT CUP-RE

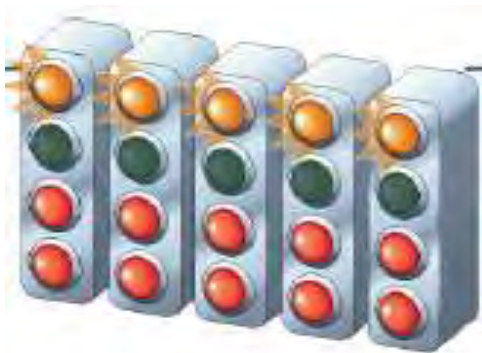


Basics – Starting Procedure

- Know your grid position
- No tyre trolleys on the grid
- Wait for the warm-up lap to start (green flag & green lights in gantry)
- 5 seconds signal – All Red lights on – All Red lights out = start race



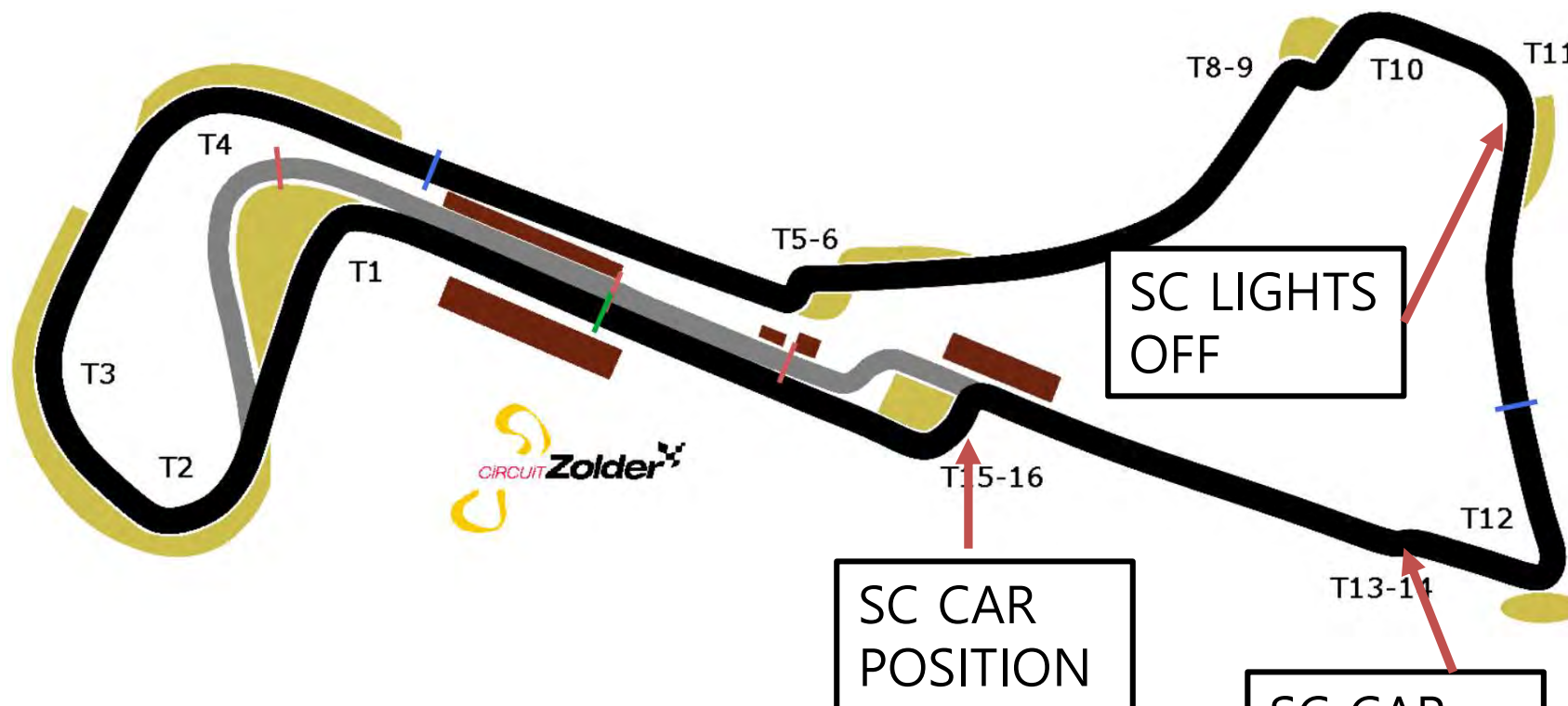
Start delayed



- In the occasion of problems on the grid or during the formation lap, the Race Director may decide not to start the race.
The start will be aborted.
- In this case, the red lights on the starting gantry remains red and orange lights will flash.
- The sign **Start Delayed** will be displayed
- A new formation lap will follow, when the green lights on the gantry have been activated (race time starts)

Safety car + FCY

FORD FIESTA
SPRINT CUP-NL
FORD FIESTA
SPRINT CUP-BE



SAFETY CAR PROCEDURE
YELLOW FLAGS + BOARDS "SC"
NO OVERTAKING
WATCH OUT FOR INTERVENTION VEHICLES

FCY PROCEDURE
YELLOW FLAGS + BOARDS "FCY"
NO OVERTAKING + 80 KPH
WATCH OUT FOR INTERVENTION VEHICLES

Safety car ending

FORD FIESTA
SPRINT CUP-NL
FORD FIESTA
SPRINT CUP-BE



NO OVERTAKING UNTILL THE CONTROL LINE WITH GREEN FLAG



Track Limits T5/T6

FORD FIESTA
SPRINT CUP-NL
FORD FIESTA
SPRINT CUP-BE



Track Limits T8/T9

FORD FIESTA
SPRINT CUP-NL
FORD FIESTA
SPRINT CUP-BE



Track Limits T15/T16

FORD FIESTA
SPRINT CUP-NL
FORD FIESTA
SPRINT CUP-BE



Hitting the cone during qualification
The actual lap + fastest lap time will be deleted

Safety – Stopping on Track

FORD FIESTA
SPRINT CUP-NL
FORD FIESTA
SPRINT CUP-BE



- An orange armco means an opening in the guardrail.
- It's a safe place to park your car after a technical defect

Flag Signals – Red Flag



- Reduce Speed. Be Prepared to Stop!
- Session is Suspended
- Follow Marshall's Instructions

Free Practice & Qualifying

All cars into pitlane

Race

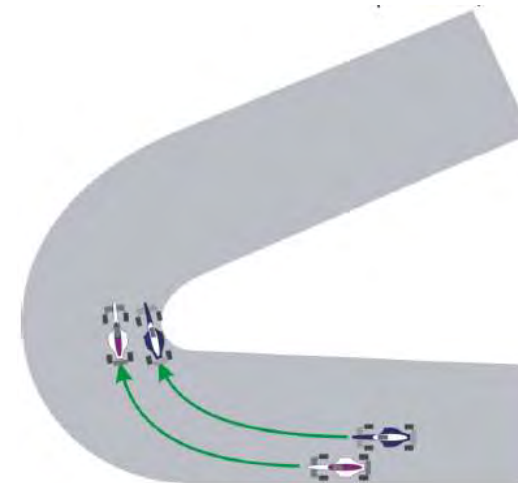
All cars in 1 line before the finish line

Driving Conduct

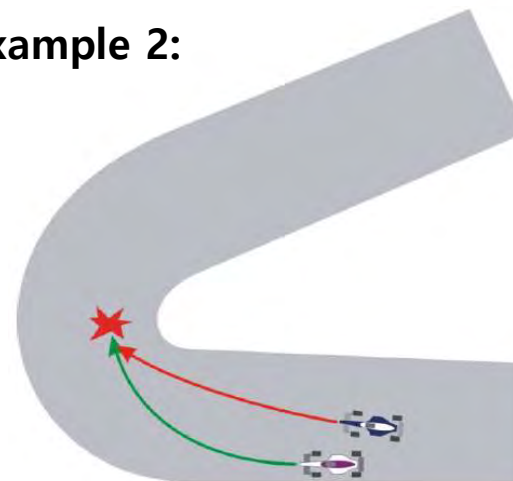
A penalty may be applied if (causing a collision)

- The inside car overshoots the corner and crashes in the outside car (goes too fast and causes a collision)(example 2)
- The outside car does not leave space for the inside car. The Outside Car must leave at least one car width space inside, allowing the attempt to pass
- (example 3)

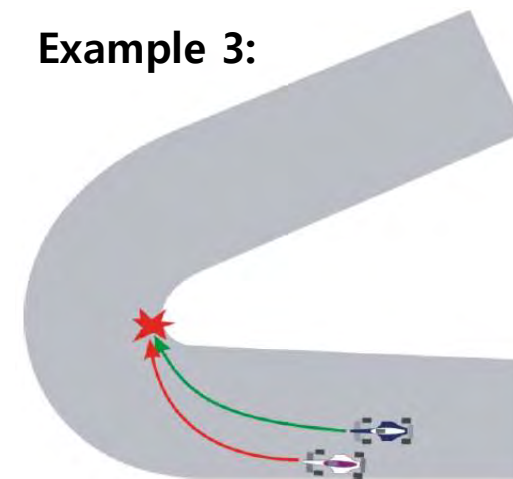
Example 1:



Example 2:



Example 3:



Driving Conduct

Examples

- Jumpstart
- Ignoring flag signals or Instructions from marshals
- Overtaking under yellow, red or after chequered flag
- Speeding under FCY, Pit lane, Yellow.
- Dangerous driving behaviour with or without contact
- Unsportsmanlike behaviour
- Change direction more than once
- Take advantage of an unclear situation
- Track limits

Driving Conduct

Penalties will be applied based on a fixed penalty list

- Deleting (fastest) lap time(s)
- Time penalty
- Position penalty
- Grid penalty
- Starting from pitlane
- Drive through
- Stop and Go
- Stewards decisions

Penalty can come with extra point(s) on your licence:

5 Points	drop of 3 places on the grid next race
8 Points	drop of 10 places on the grid next race
10 Points	Start from pit lane next race

QUESTIONS? MAKE IT A GREAT WEEKEND!

SAFETY – RESPECT - SPORTSMANSHIP

