



TechNet-21



**DEPLOYING AN ELECTRONIC LMIS:
MAKING THE RIGHT CHOICE**

Introducing Bileeta LMIS software and services

Presenters :

Dhanushka Kavindu, eLMIS Product Manager , Bileeta

Tichaona Mushambadope, e-LMIS Project Manager, Ministry of Health & Child Care, Zimbabwe

15:00 CET, September 23, 2021

INTRODUCTION



TechNet-21



bileeta



Entution Vesta eLMIS



About Bileeta



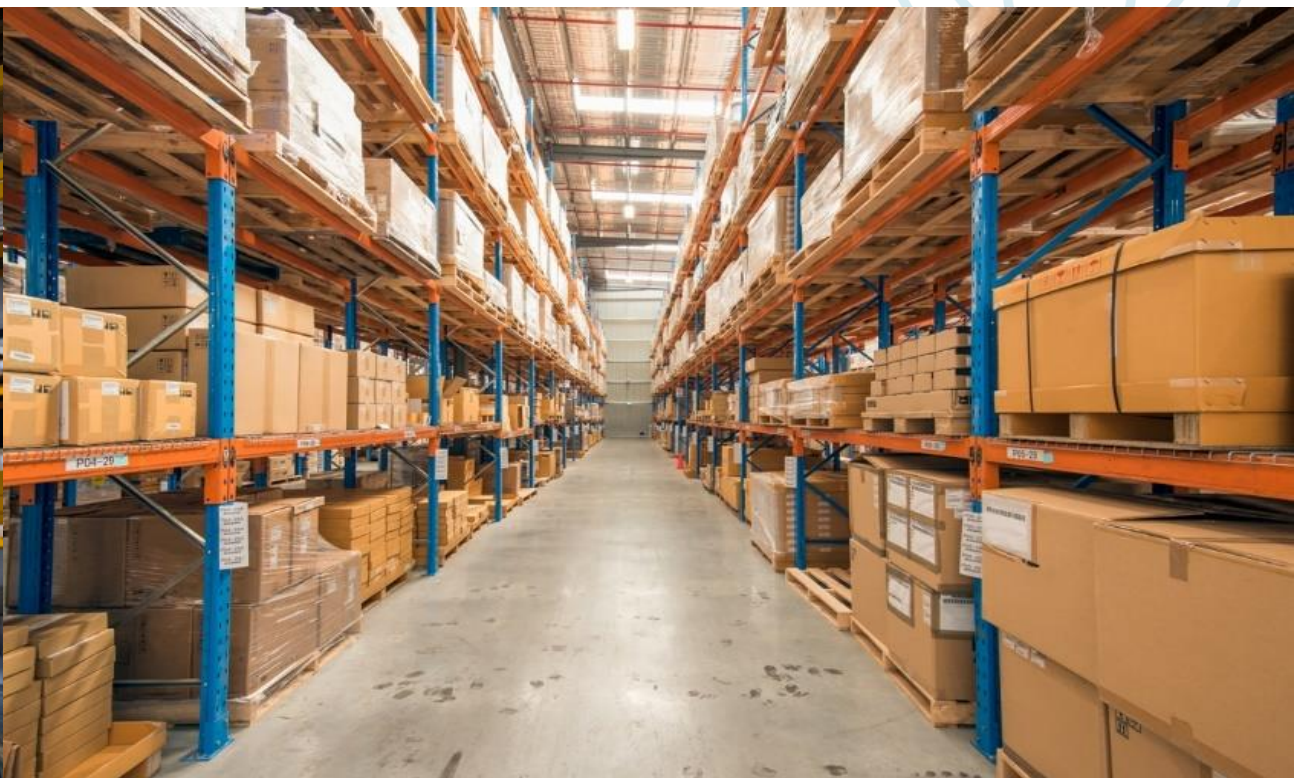
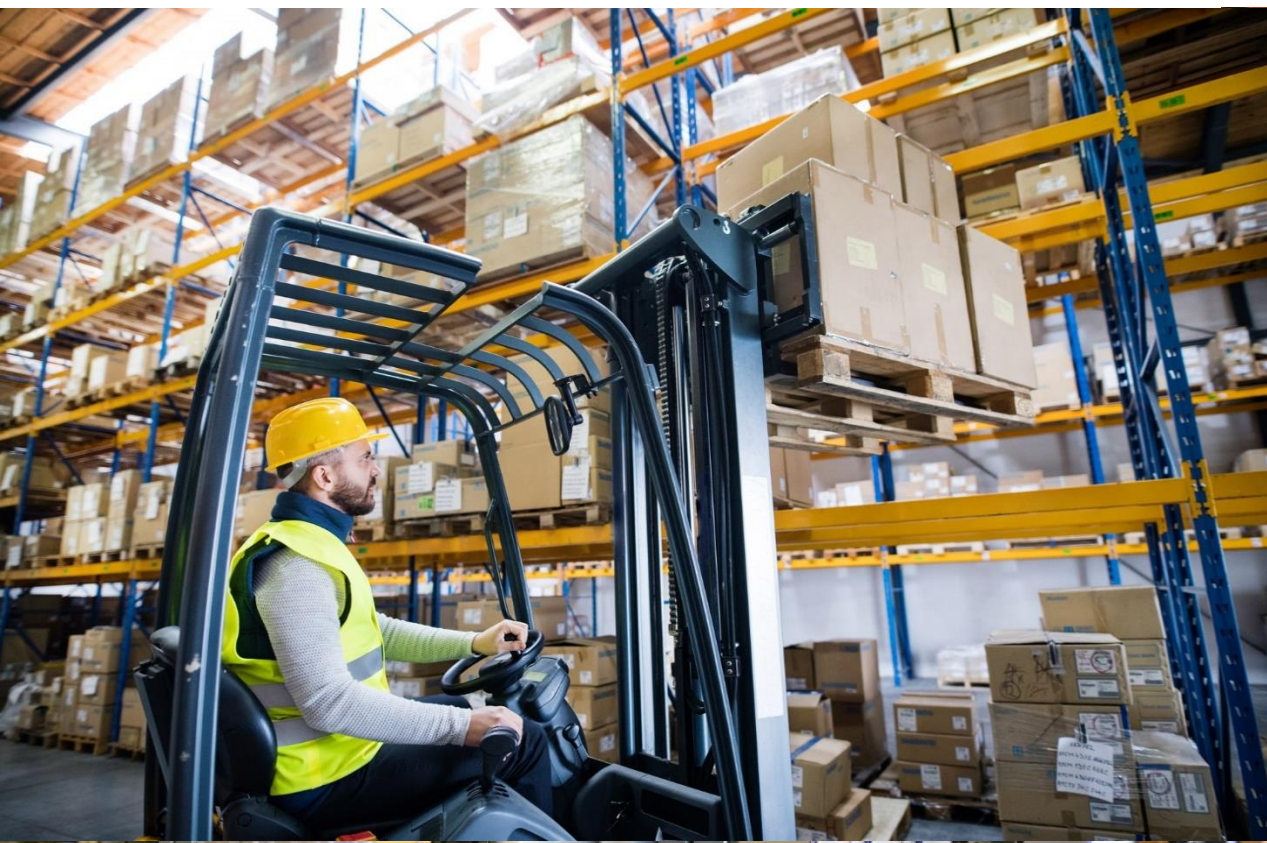
Bileeta is an award winning Enterprising solutions provider, established in 2010 and having a 100+ workforce.

We specialized in cloud and mobile based technologies to cater for:

- Supply Chain Management
- Pharmaceutical Management
- Health Informatics
- Business Intelligence

Launched **entution**
Platform in 2014

Expectation



Reality



Problems in Health Logistics Management Process

Problems

Well-functioning supply chains for medicines, vaccines, contraceptives and other products are key to reaching people in need of improving, maintaining or protecting their health.



Do we have **Right Products?**



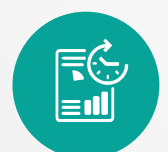
In the **Right Quantity?**



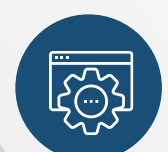
In the **Right Condition?**



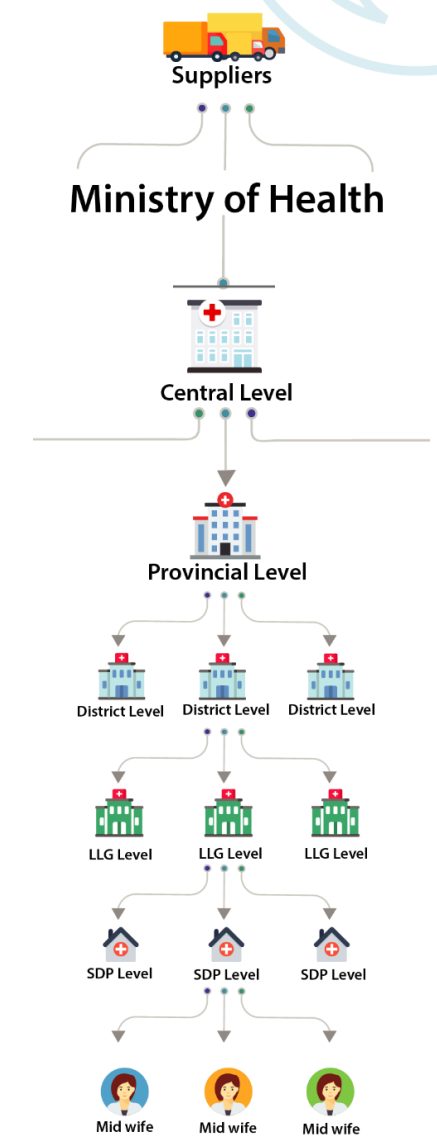
In the **Right Place?**



In the **Right Time?**



For the **Right Cost?**



Health Logistics Management & Monitoring Process

Introducing or enhancing a digital logistics management information system (LMIS) in a country's health supply chain improves the collection, analysis, communication and use of accurate data for effective decision-making.

Challenges



Pipeline Projections?

- Forecasting for health commodities at every level of the supply chain



Stock Management?

- Stocked & Stockout Locations
- Received vs Consumed
- Cold chain capacity management
- Expiry & Wastage management



Distribution Management?

- Distribution based on demand
- Managing different Health Program such as HIV, TB, Malaria, COVID-19, etc.



System integrations?

- Integration with other systems such as DHIS2, HIS, ERPs, etc.
- GS1 Barcode & IoT Device integrations



Real Time Data Visibility?

- Real time Dashboards, Reports & KPIs for decision makers
- Batch, Lot, VVM Stage, Expiry & Manufacturer Information Management



Infrastructure Constraints?

- Software implementation in different infrastructures such as interrupted electricity & internet.



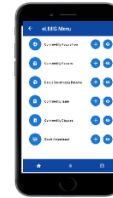
Online



Offline



Mobile

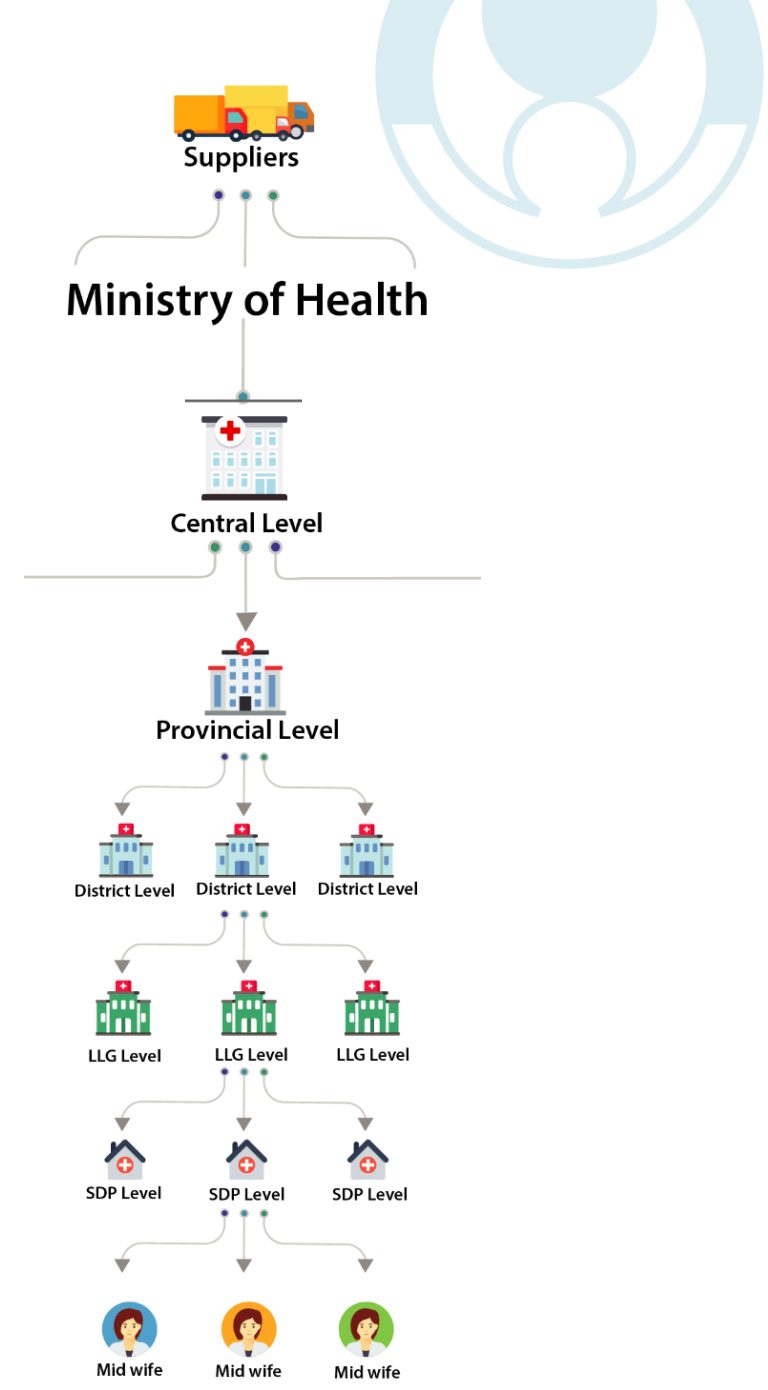
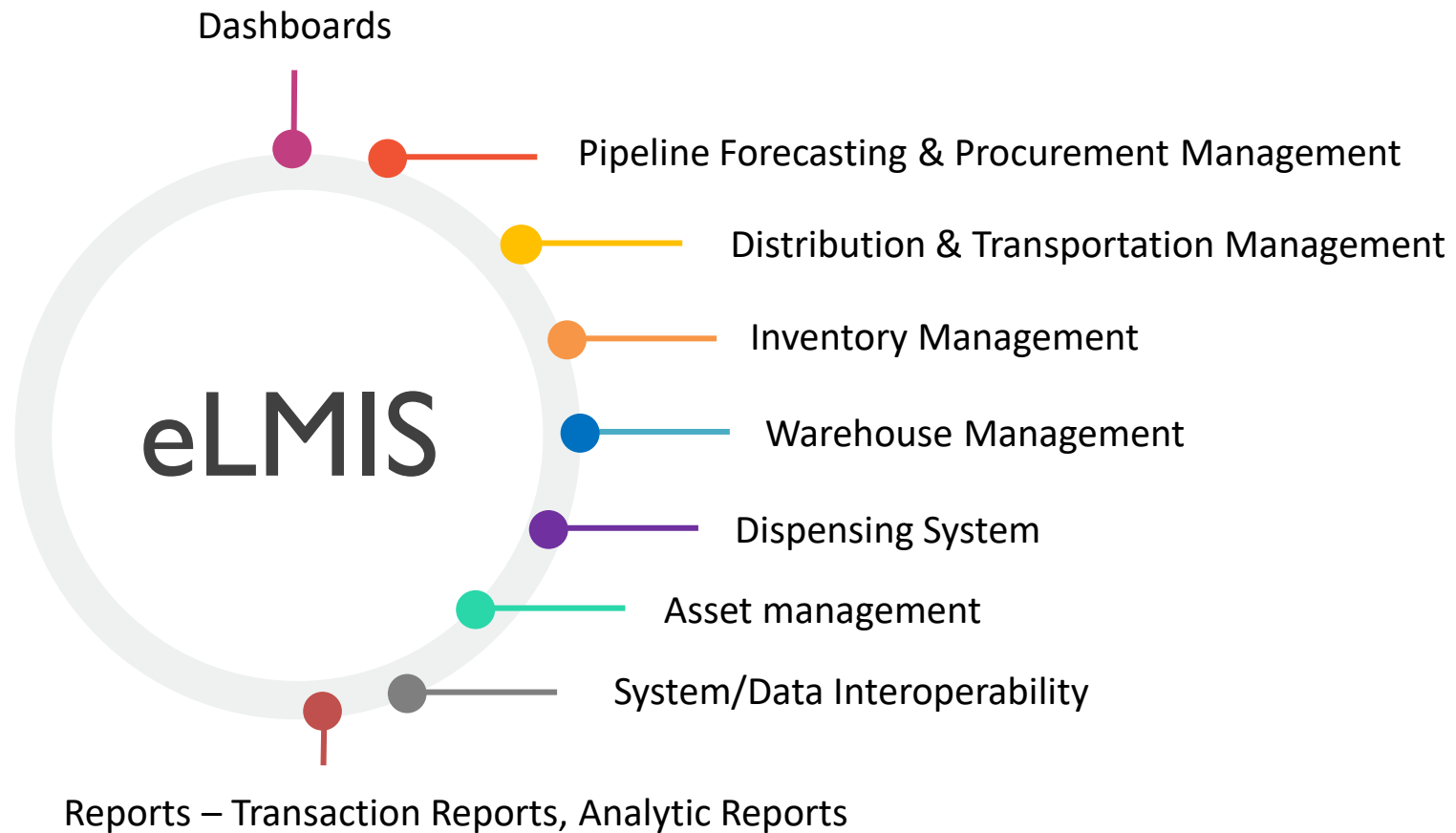


DSS



- ✓ Vesta is an extension of Entution platform focusing on Supply Chain Management of Health Commodities.
- ✓ Capable of handling online and offline data.
- ✓ Optimize the flow of health commodity supply chain through forecasting, quantification, procuring and distribution.
- ✓ It enables 360 view of the inventory status in the country/organization.

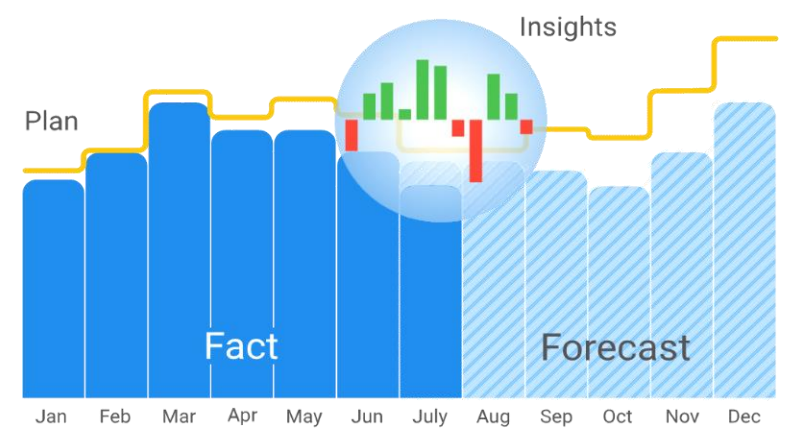
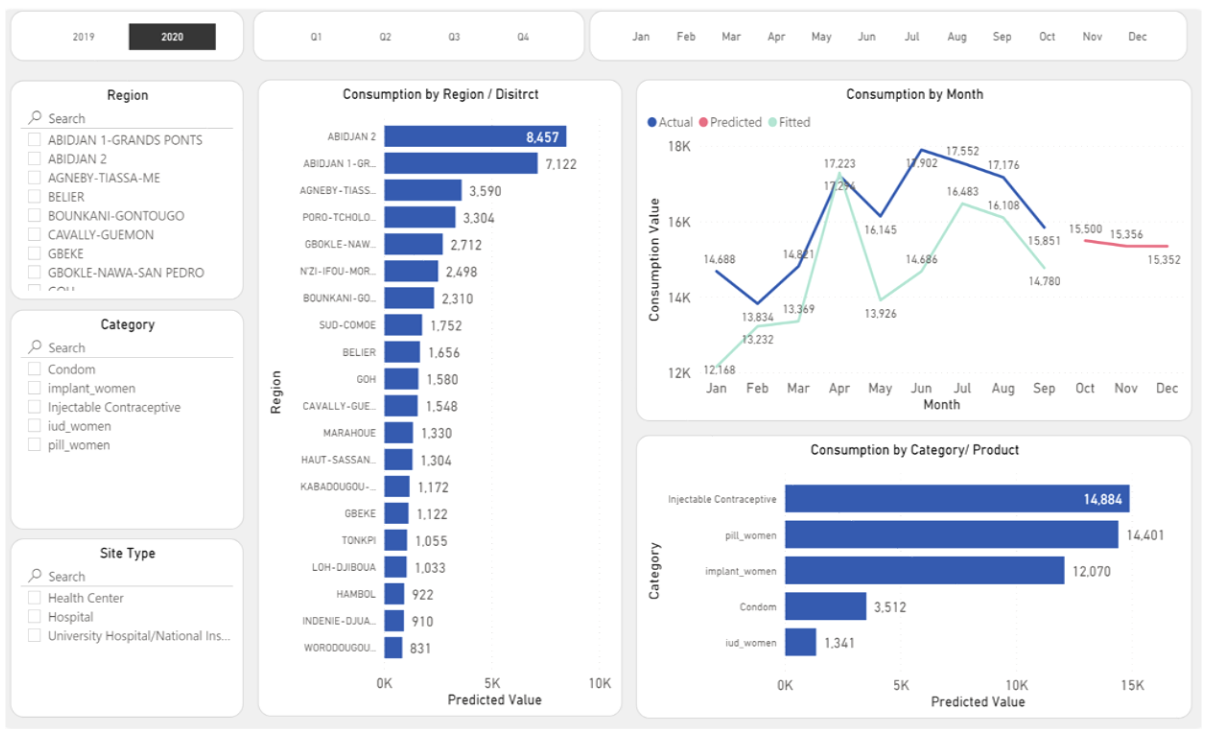
Main Features



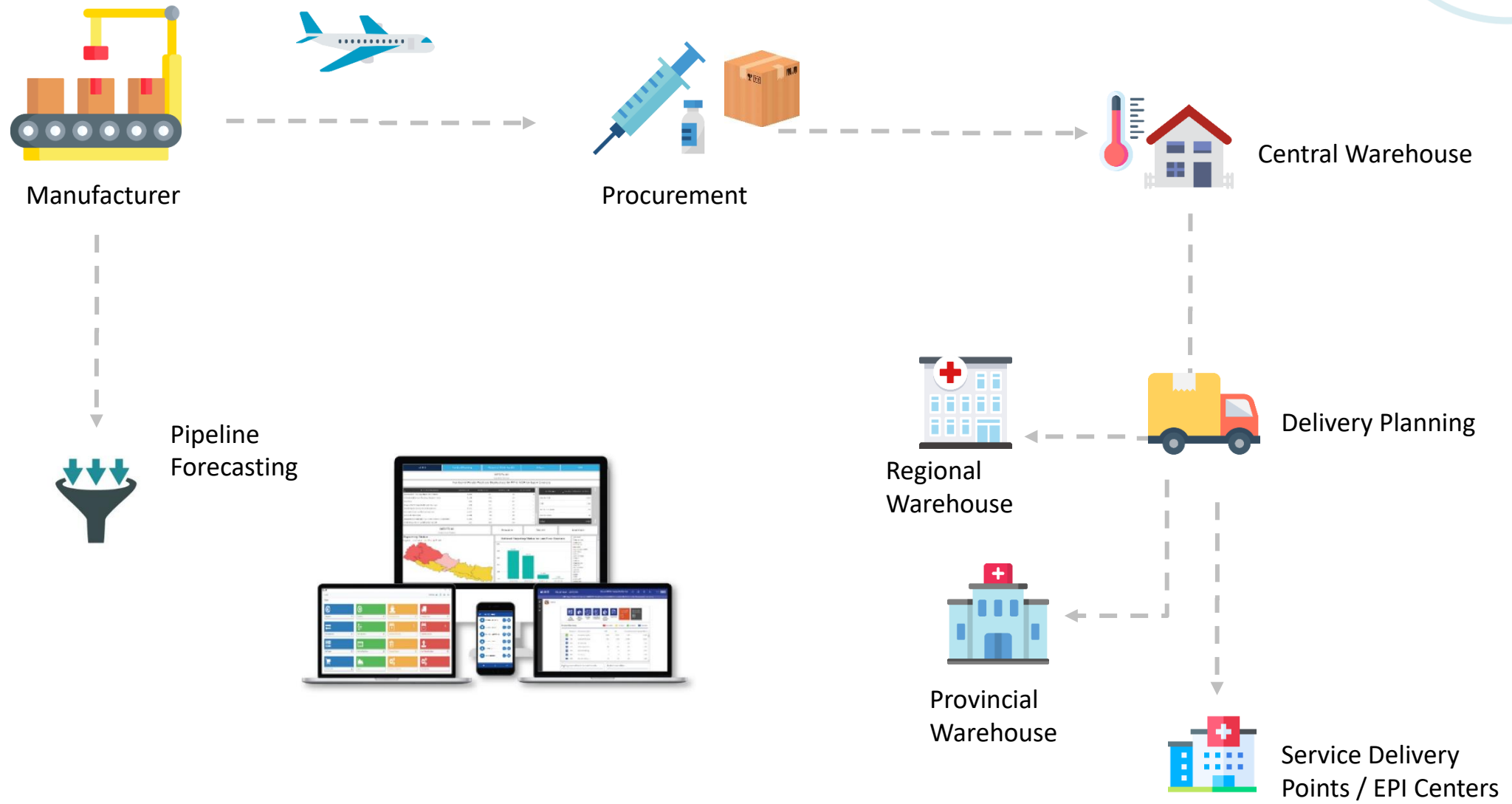
Pipeline Projection



- Suggest the Product wise & Health facility wise Reorder Levels
- Forecasts are Factored with, Future Procurement, Expired items, Near Expiry, VVM Stages, etc.
- Facility Wise, District wise, Province Wise and National Pipeline Creation
- In the process of incorporating AI powered Neural Network to forecast the consumption patterns



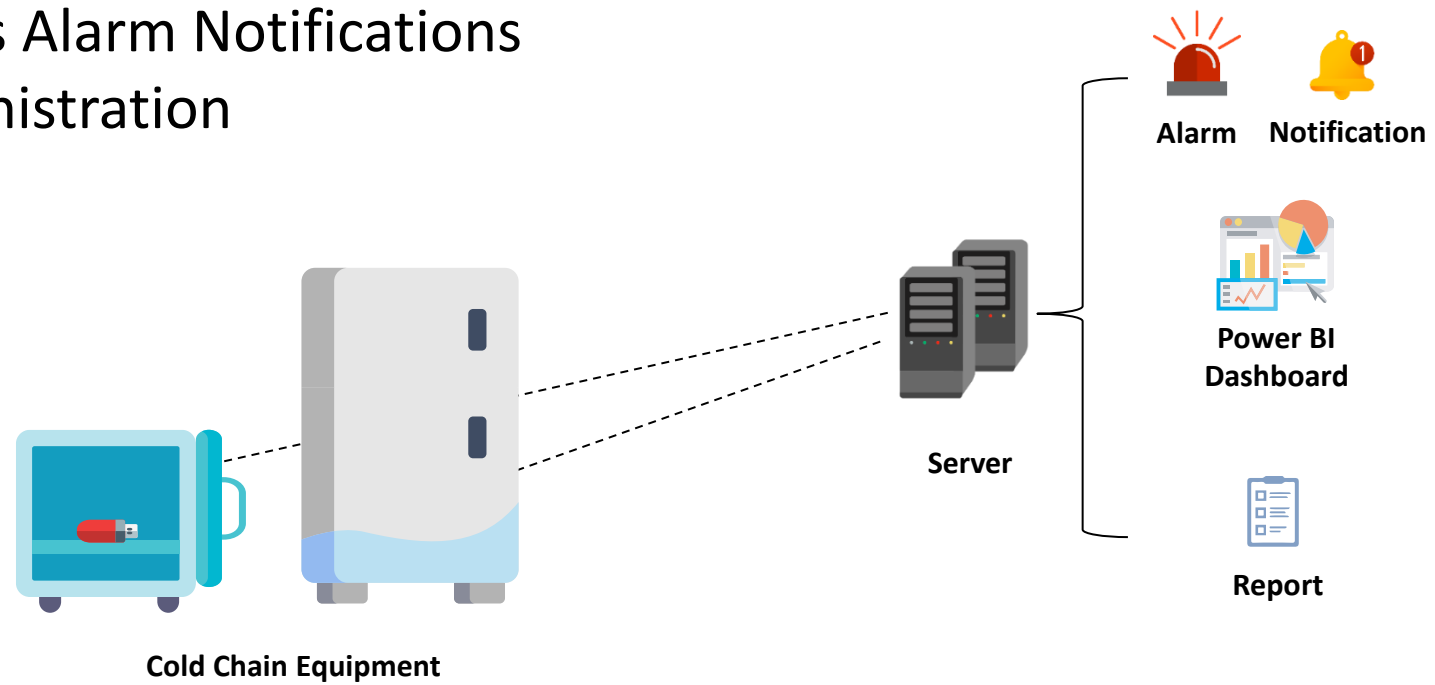
Logistics Management



Cold Chain Management



- VVM Stage Management
- Integration with RTM Devices
- Daily & Monthly Temperature Logs
- Temperatures Alarm Notifications
- Patient Administration

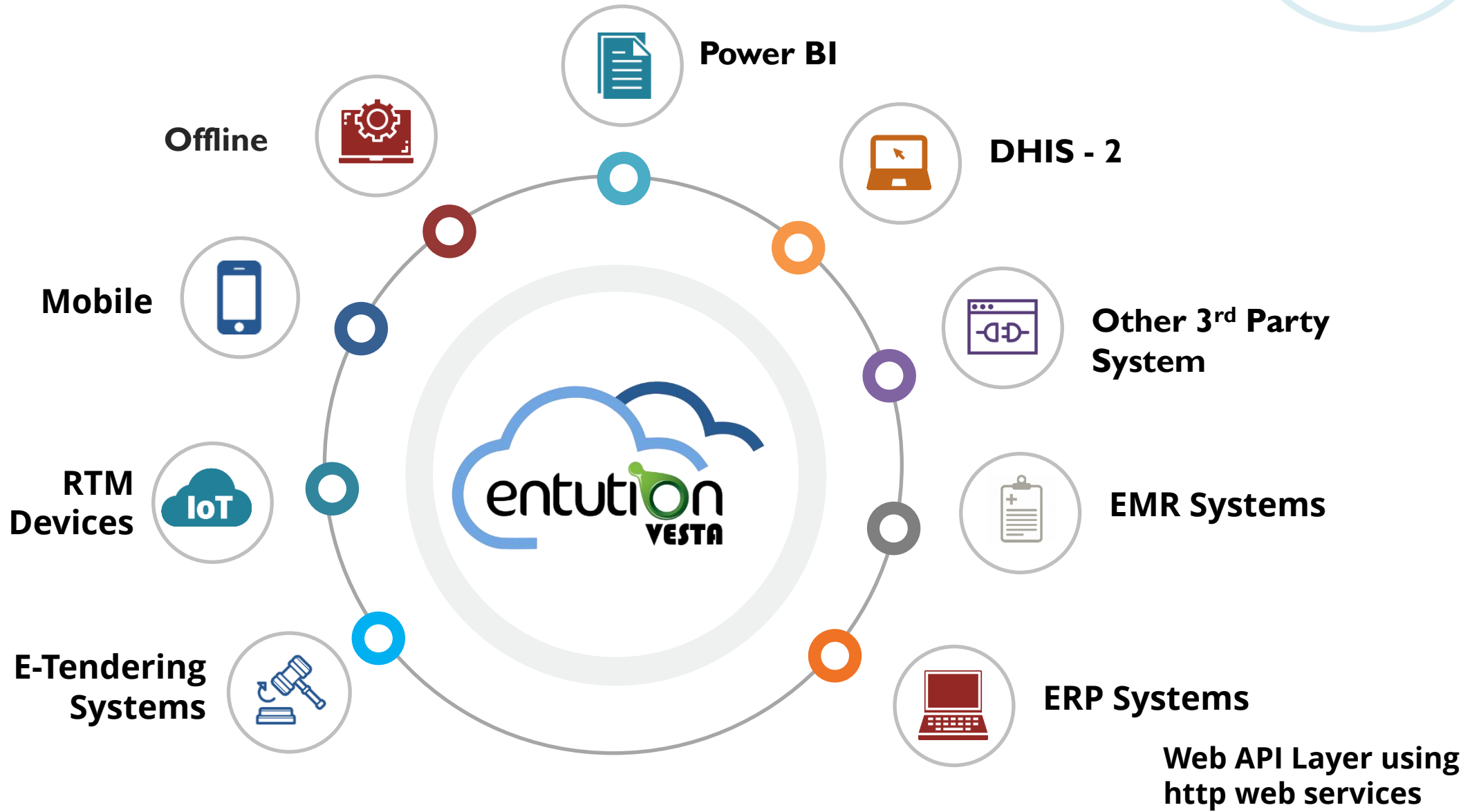


GS 1 Barcoding

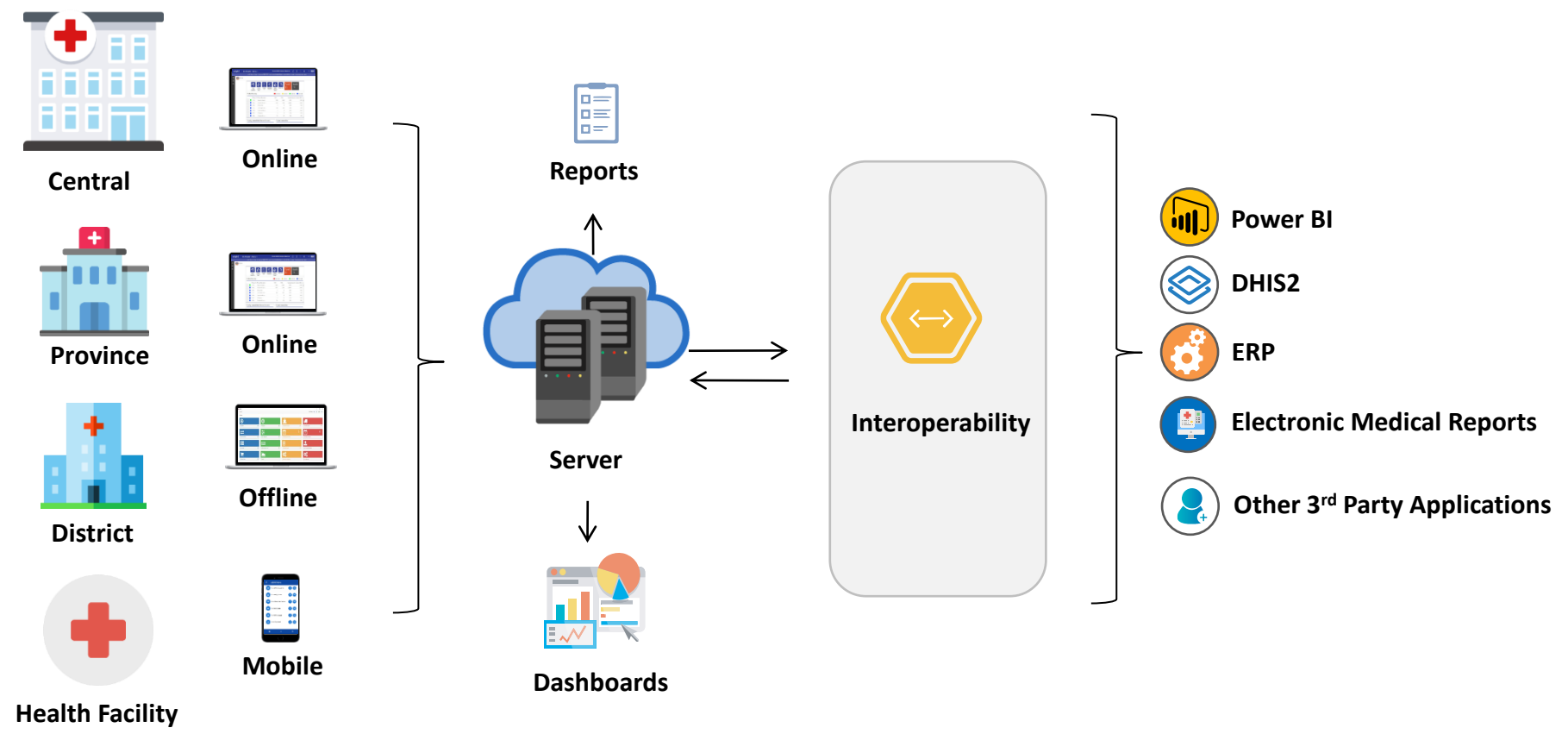


- Barcode Generation and Label Printing
- Compliance with GS1 Standards
- Ability to integrate with GTIN & GLN Portals
- Barcode Mobile Application

Interoperability



Solution Architecture



Dashboard & KPIs



GIS Maps

Reporting Status, Consumption, MOSOH, Stock Availability, Expiry & Loss Rate

Pie Charts

Local vs Foreign Procurement, Funding Sources, Stock out Rate, Offline/ Mobile Synchronisation Status, Dispense, Returns, Transfer Orders, Regular & Emergency Requisitions, Commodity Issues, Commodity Receives & OTIF

Tables

Number of Health Facilities Stocked Out, Stock Out Rate, Expiry & Near Expiry by Product and Warehouse



Graphs

Transaction History by Province, Order Fill Rate, Wastage Rate & Active Users

Bar Charts

Reporting Status for last 4 quarters, Consumption, MOSOH, Lead Time Days, Stock Availability, Synchronisation Status, Full Stock Availability, Stocked According to the Plan, OTIF & Remote Temperature Monitoring

Reports



Transaction Reports

Requisition, Purchase Order, Commodity Issue, Distribution, Dispose, Bin Transfer, Stock Adjustments, Commodity Receive, Physical inventory, LMIS Data entry, Dispense, Asset Related Reports, Temperature Logs, Stock Cards, etc.



Analytic Reports

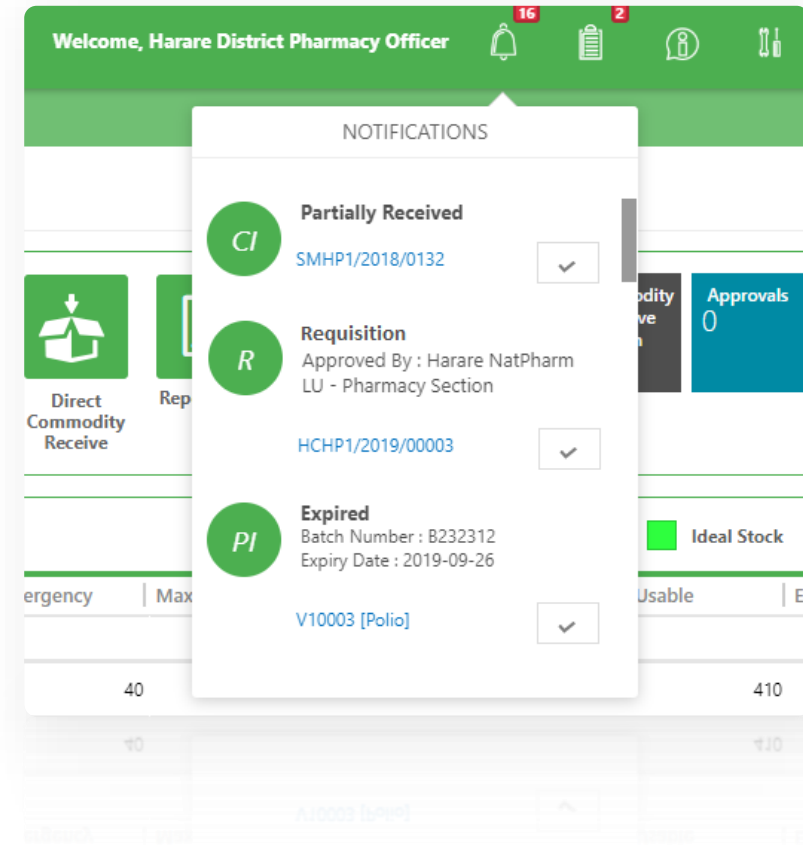
Pipeline Forecasting, Stock-outs, Stock-out Trends, Month of Stocks, Consumption, Consumption Trends, Reporting Status, Reporting Trends, Stock Summary & Detail, Batch Wise Statements, Expiry & Near Expiry Reports, VVM Stage Reports, Product Aging, Pending Commodity Receive, etc.

Reports can be extracted to “PDF”, “Excel”, “Excel Tables” and “Raw Data Excel”

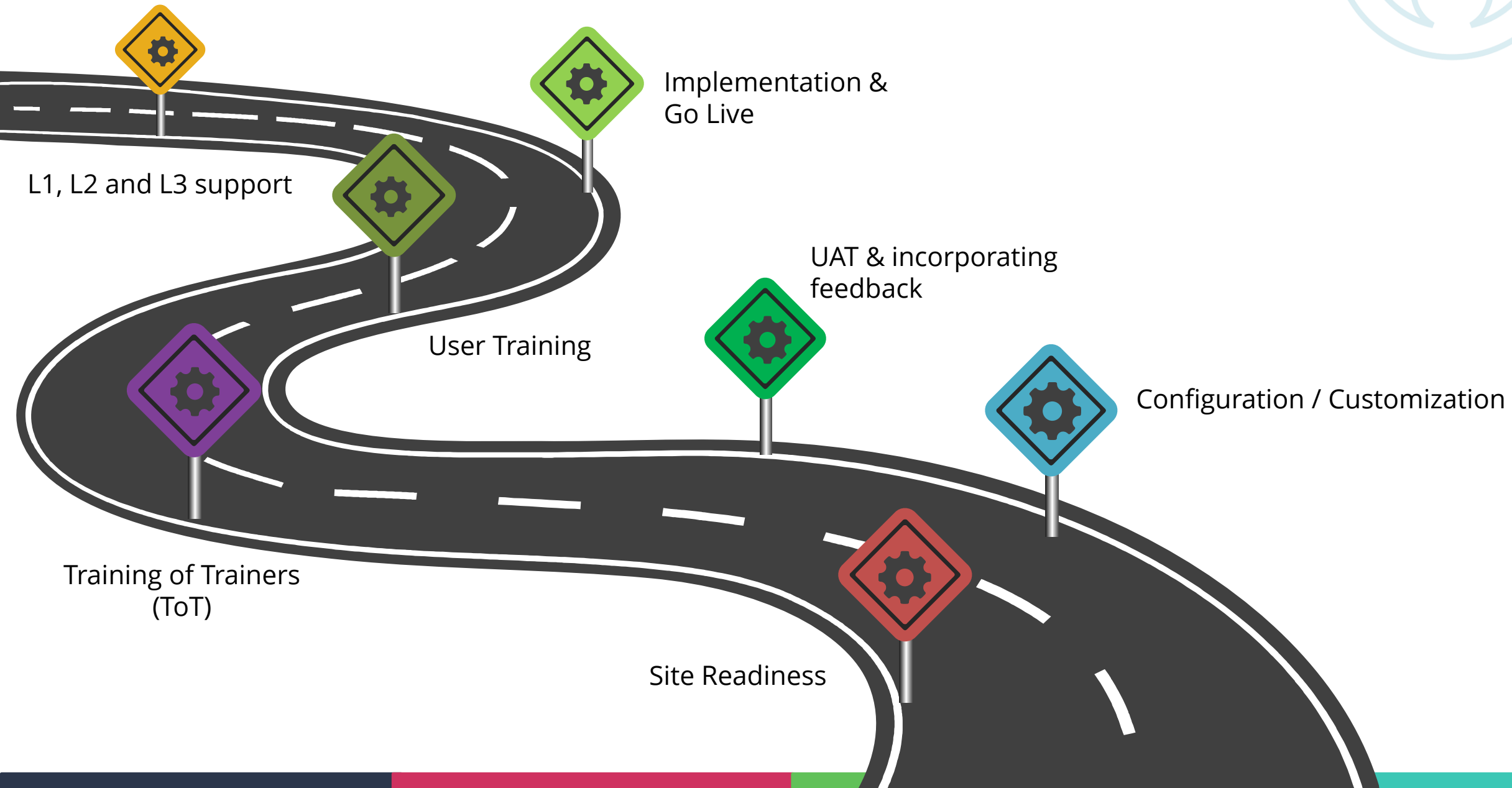
Actionable Data



- Near Stock Out Notifications
- Near Expiry Notification
- Shipment Notifications
- Reminder Facility
- Approval Notifications
- Reject Notifications
- Temperature Alarm Notifications



Implementation Methodology



Training Needs



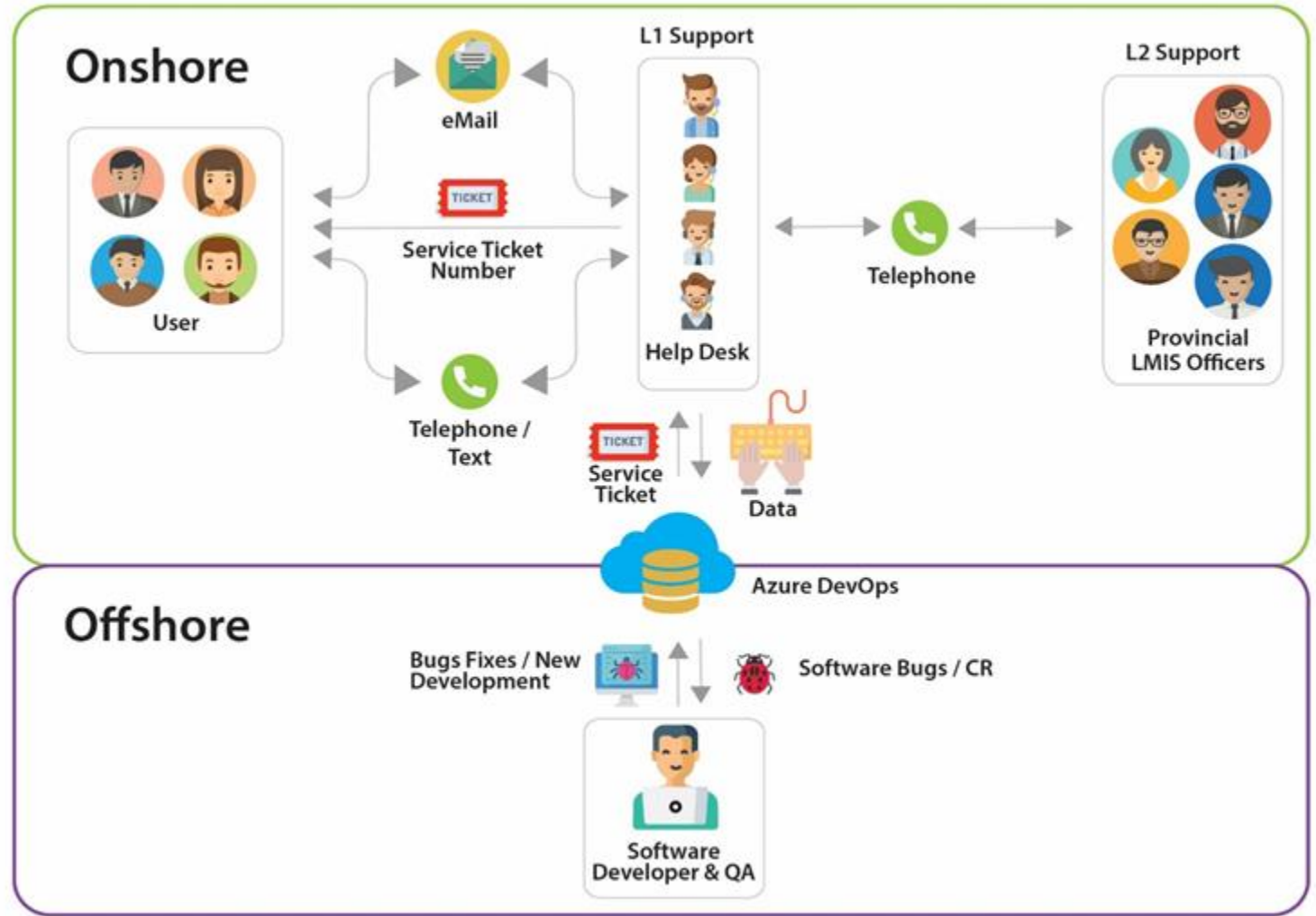
- TOT
- End User Training
- Refresher Training Sessions
- Self Phased Learning



Support & Sustainability



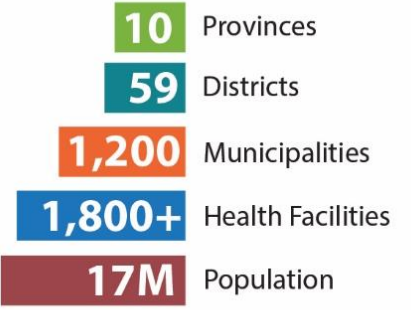
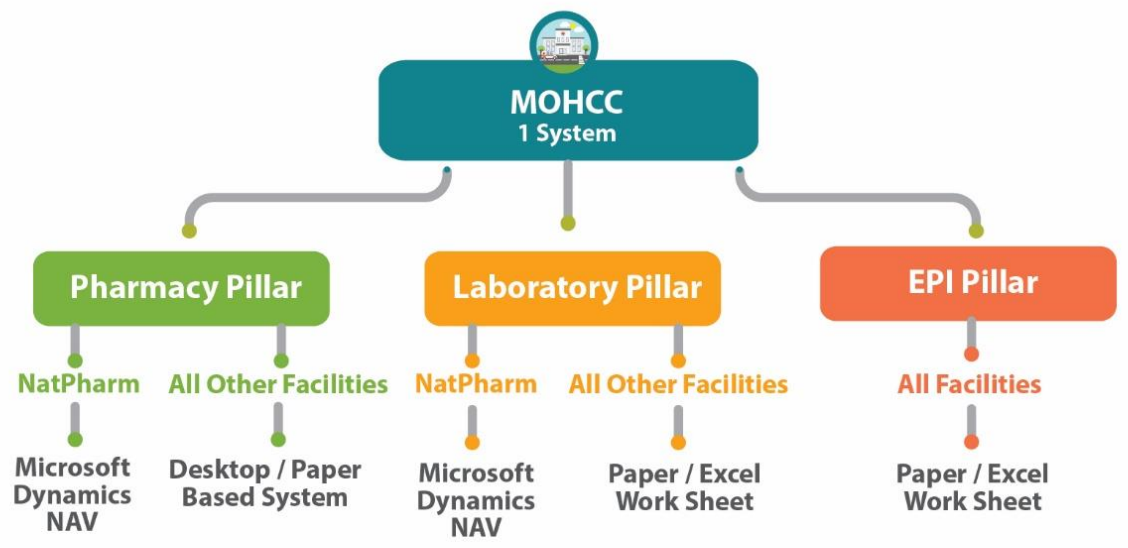
- SaaS Model
- Local Partnerships
- L1, L2 and L3 Support
- Software Warranty





Case Study Zimbabwe

Background & Objectives in eLMIS - Zimbabwe



MSD NAV was implemented only in 6 Central Warehouses. All other facilities are paper based. NatPharm logistics unit data entry operators enter paper based requisition data to a desktop app and those data are synced to MSD NAV.

MSD NAV was implemented only in 6 Central Warehouses. All other facilities are paper based. NatPharm logistics unit data entry operators enter paper based requisition data to a desktop app and those data are synced to MSD NAV.

Paper based facility data are communicated to district stores and then those data are communicated to the provincial and central levels using excel work sheets.

No
Quick Access to Dashboard and Reports.

Interrupted electricity and internet in Service Delivery Points

Objectives

- Provide end-to-end data visibility
- Tracking and inventory management across Zimbabwe including remote facilities
- Increase accountability for management of stock
- Reduction of expiries and stock outs at health facilities
- Integration with other existing applications

Expected Health Outcomes



Less Expiries, Management of FEFO & Improved Distribution



Improved Reporting Rates as Reporting is Decentralized



Less Stockouts



Accurate Pipeline Generation with Real-time and Historical Data



Quick Decision Making for Management Using Reports & BI Tools



Reduced Lead-time



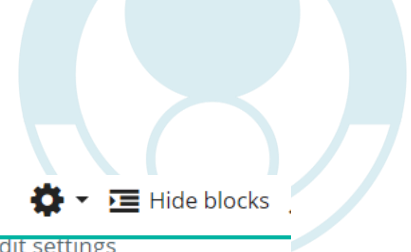
Improved Data Visibility and Communication



Data Warehouse



Rapid Responses for Outbreaks



ELMIS General Wiki

Content

- Configuration
- Stock Adjustment – Opening Balance
- Purchase Order
- Emergency Requisition - Pharmacy
- Emergency Requisition – Laboratory
- Transfer Order
- Return Shipment
- Direct Commodity Issue
- Dispense
- Direct Commodity Receive
- Physical Inventory
- Stock Adjustment
- Commodity Dispose
- Bin Transfer
- Product Conversion
- Reports

Support and Supervision

Course >

System Administration Setup

- Organization Hierarchy
- UI Customizer
- Messenger
- User Management
- Workflow Manager
- Parameters

Administration Training

Course >

ELMIS User Training

Course >

TOT - Train the Trainer

Course >

- Edit settings
 - > Users
 - Filters
 - > Reports
 - Backup
 - Restore
 - > Question bank
 - > Site administration
- Search in settings

bileeta

Thank You

For more info visit

www.bileeta.com

f in

 160/24, Level 1, Kirimandala Mawatha, Colombo 05, Sri Lanka.  +94 114 378 378