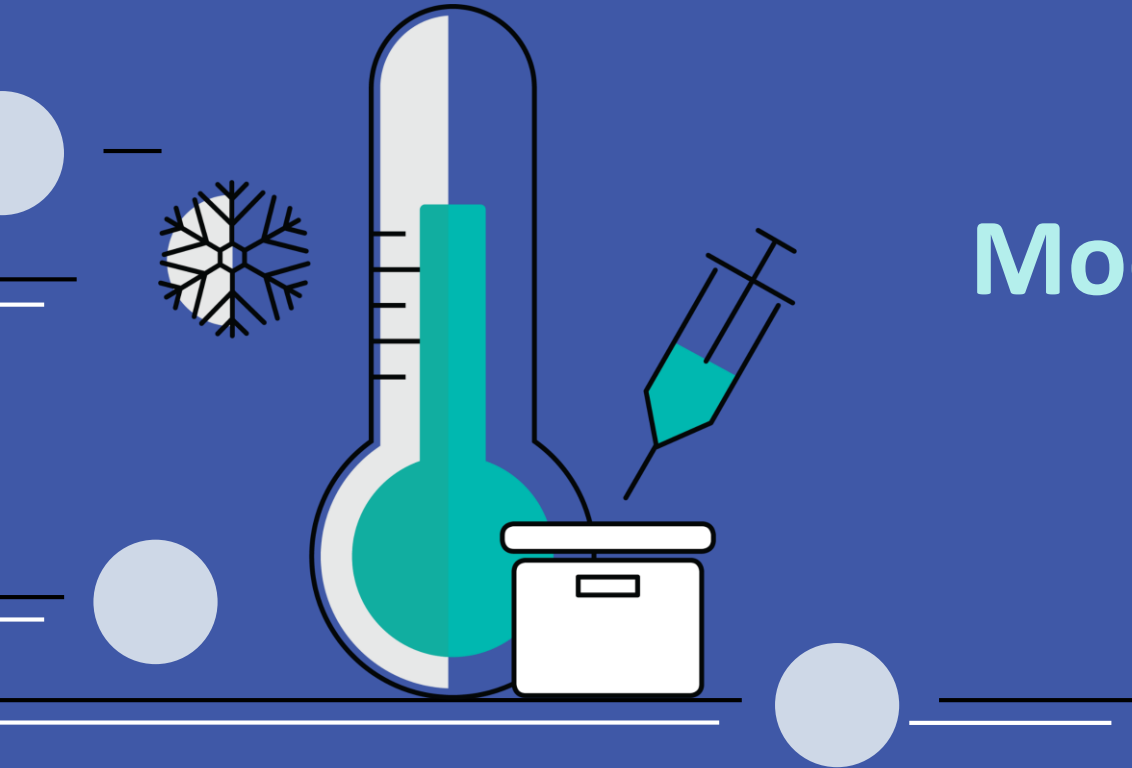


EVM TRAINING MODULES

Module 2: History of EVM



Agenda

1. The history of EVM1 and transition to EVM2
1. A closer look: [\[your country\]](#) embarks on EVM2
1. Country Q&A





1

The history of
EVM1 and
transition to
EVM2

2009: The launch of the EVM quality management tool

Over the past 11 years, EVM continues to evolve with new learnings and country experiences of EVM assessments supporting their immunization supply chain.

Index and instructions	
Data input sheets:	
Vaccine select	Data entry to generate vaccine volumes per Fully Immunized Child (FIC) or per Target Population
Facility table	Data entry to generate results for all facilities in tabular form
Nomo_data	Data entry to generate the Nomograms
Estimated weight of safe injection equipment per recipient	
Volume Inject	Estimated net storage volume of diluents and injection equipment per recipient
Weight Inject	Estimated weight of safe injection equipment per recipient
Nomogram_Positive_no_polio	Nomogram for +5°C vaccine storage at primary and sub-national where OPV is kept at -20°C
Nomogram_Negative_polio	Nomogram for -20°C vaccine storage at primary and sub-national levels
Nomogram_Positive_LD_SD	Nomogram for +5°C vaccine storage at lowest delivery and service delivery levels where all vaccines are kept together at +5°C
Nomogram_DrySt	Nomogram for dry storage capacity for diluents, syringes and safety boxes
Nomogram_Transport	Nomogram for transport capacity
Nomogram_Passive	Nomogram for passive container capacity (cold boxes, etc) during transport
Nomogram_Waterpacks	Nomogram for icepack freezing or cooling capacity
Sheets for manual data entry or automatic calculation:	
Worksheet A	Data entry and calculation sheet for shelving store net storage capacity assessment
Worksheet B	Data entry and calculation sheet for maximum and minimum stock level assessment
Worksheet C	Worksheet C: Vehicle capacity
Sheets with reference data:	
Vaccine database	Vaccine database
PQEquipment	PIS/PQS prequalified refrigerator and freezer database
Passive Containers	PIS/PQS prequalified cold box and vaccine carrier database
Icepacks	Icepack database

The history of EVM

**EVM data helps prioritise the
most important areas for
improvement**



80% of health facilities worldwide are equipped with non-functional or obsolete cold chain equipment.



In many places it is easier to procure cold chain equipment than have technicians keep equipment functioning properly.



A nurse has no motivation to complete temperature charts accurately when her calls to repair a faulty fridge remain unanswered.



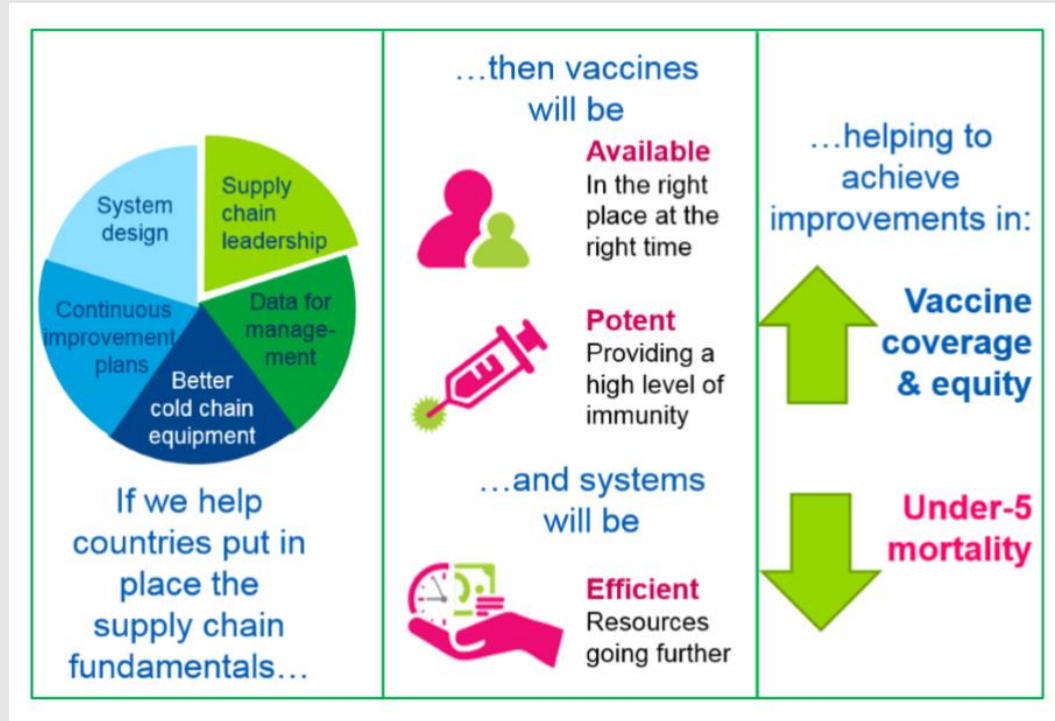
2015: The Gavi Alliance iSC Strategy set the standards for performance

The performance of the immunization supply chain is defined by:

- the **availability** of vaccines
- the **quality** of those vaccines
- the **efficiency** of the system



Supply Chain Strategy



Vaccines are available in the right place at the right time

Delivering on availability means that vaccines and dry goods are available where and when required.



availability

Vaccines are of the right quality to provide immunity

Delivering on quality means that damaged vaccines are never administered requires the ability to identify and remove damaged vaccines from the supply chain.



quality

Systems run efficiently — making resources go further

Delivering on efficiency means eliminating waste in the supply chain (e.g. close vials wastage, expired or damaged vaccines).



efficiency

2018: The EVM2 tool begins to change to a digital app

EVM2 begins development as a tablet application that makes the assessment easy to administer in both 5-year and more targeted/ frequent increments



How do we look at this tool as an entry point, and then really connect it to all of the pieces that the country will have?

- ANURADHA GUPTA, GAVI



2019: The rollout to build ownership

The EVM2 rollout begins to train assessors on the new application while focusing on both skill and community building.



In EVM2, initial country set-up is only done once

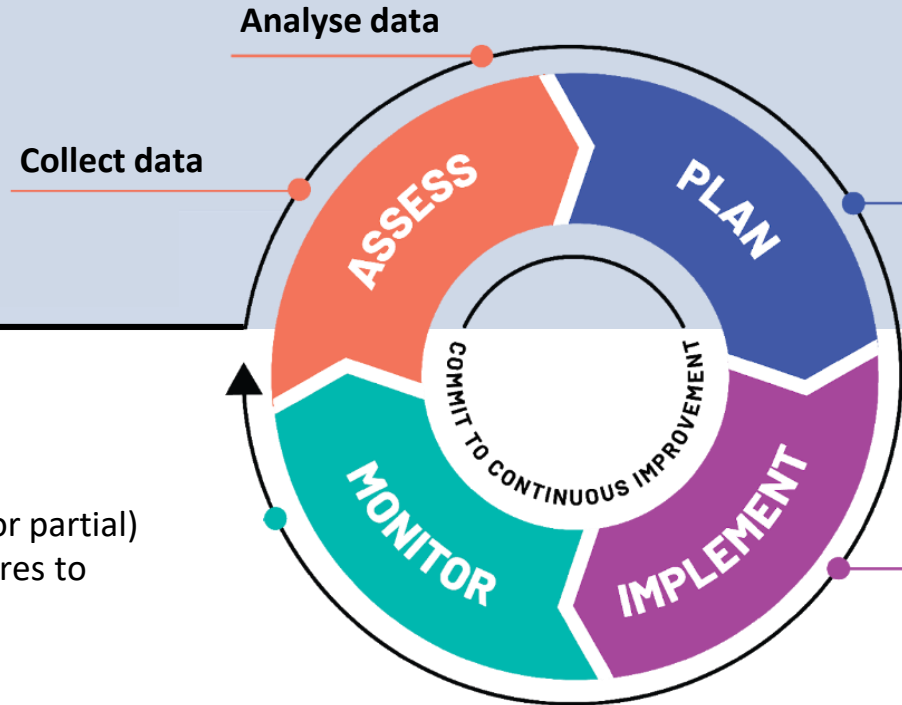
PREPARATION

Country set-up

- Country-specific data
- Administrative units
- Locations
- Immunization schedule
- Supply chain parameters
- Tracer products

Assessment creation

- Identify locations
- Define scope (full or partial)
- Assign questionnaires to assessors

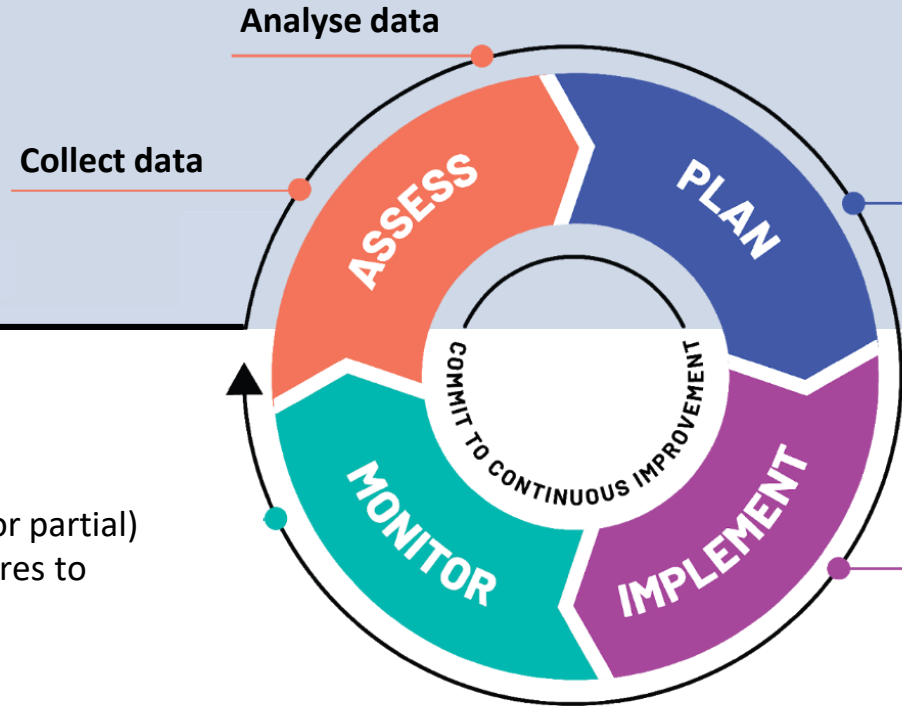


This makes additional **targeted** (specific sites) or **partial** (some criteria) assessments easy and available to countries.

PREPARATION

Assessment creation

- Identify locations
- Define scope (full or partial)
- Assign questionnaires to assessors



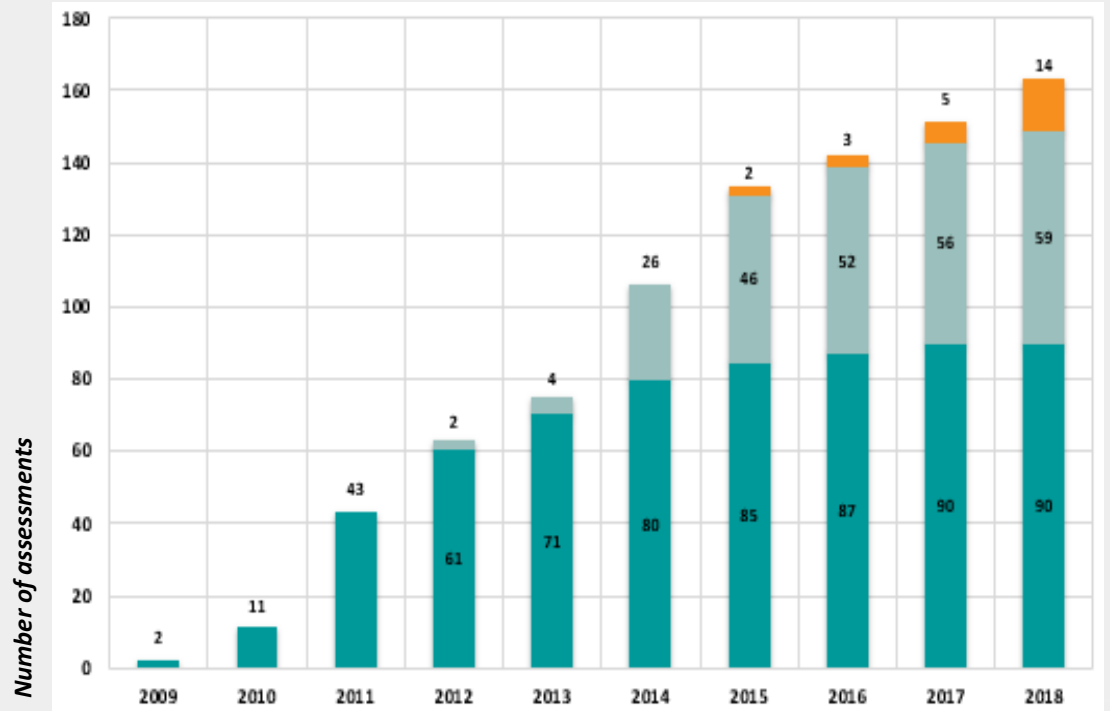
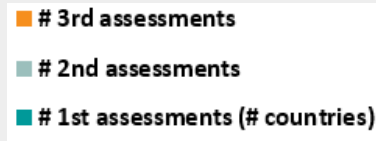
Beyond national assessments

**With the EVM App, anyone can
assess a health facility wherever
and whenever they want.**



From inception EVM has grown in popularity and practice

History of EVM



The implementation of EVM2 presents the opportunity to:



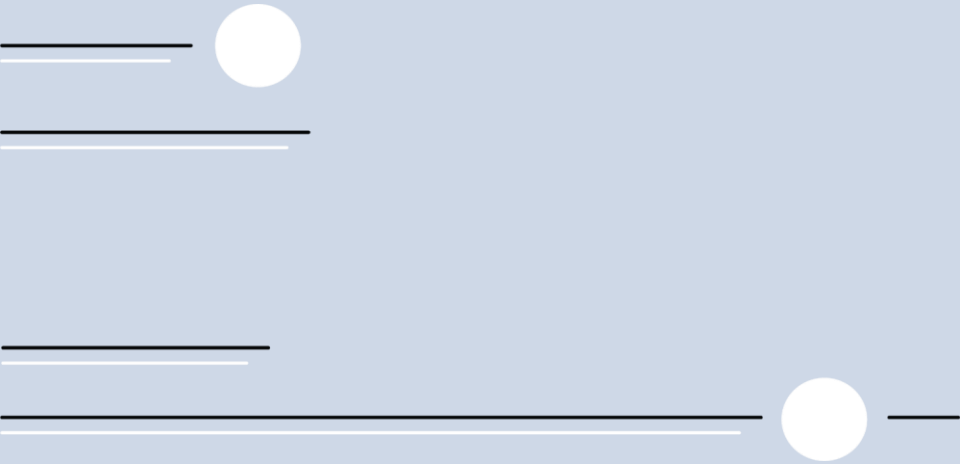
Focus on building local capacity



Create a data-use culture instead of focusing on final total score



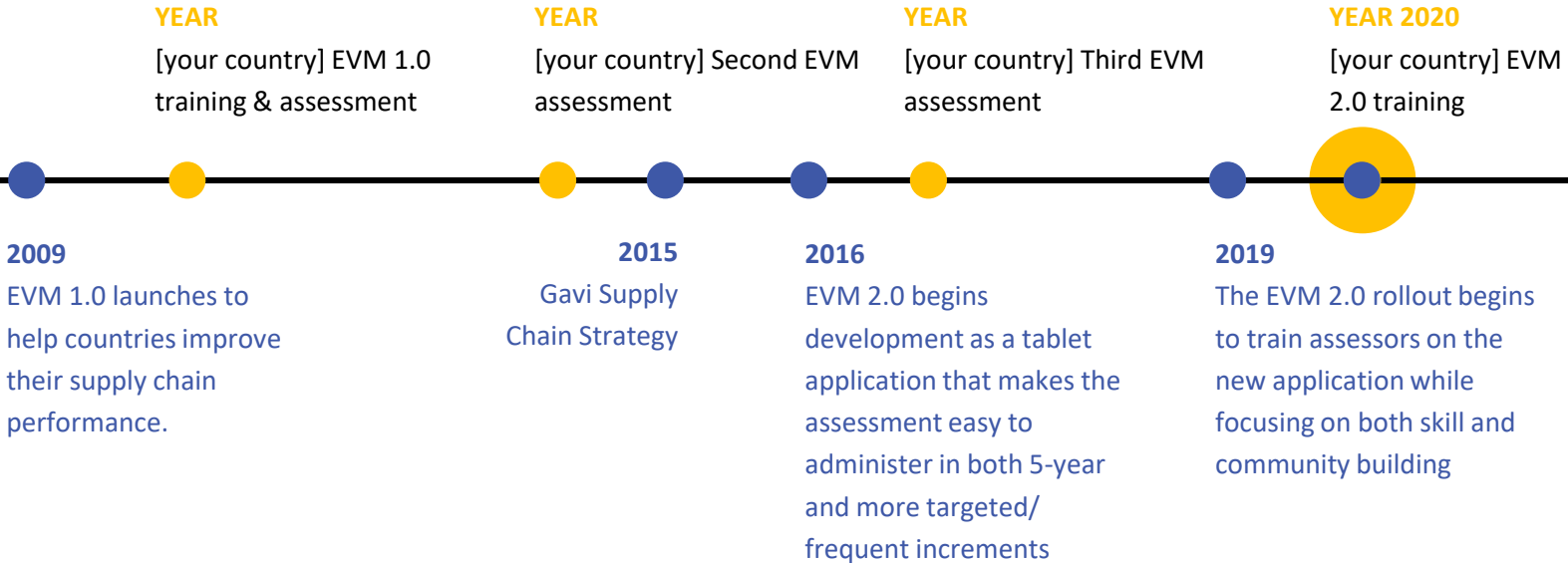
Build a process and share intelligence for continuous improvement



**A closer look:
[your country]
embarks on
EVM2**

EVM in [your country name]

Direction to countries: fill out the top half of the timeline with key milestones from your country. Add and remove milestones as applicable.



Our starting point: A closer look Summary of national results from [20xx]

Direction to countries: fill-in the scores in the right column with your most recent EVM results.

National level		
Criteria		Score
E1	Vaccine arrivals	
E2	Temperature management	
E3	Storage and transport capacity	
E4	Storage of vaccines and dry goods	
E5	Maintenance	
E6	Stock management	
E7	Distribution of vaccines and dry goods	
E8	Vaccine management	
E9	Waste management*	

Our starting point: A closer look Summary of primary level results from [20xx]

Direction to countries: fill-in the scores in the right column with your most recent EVM results.

Primary level		
Criteria		Score
E1	Vaccine arrivals	
E2	Temperature management	
E3	Storage and transport capacity	
E4	Storage of vaccines and dry goods	
E5	Maintenance	
E6	Stock management	
E7	Distribution of vaccines and dry goods	
E8	Vaccine management	
E9	Waste management*	

Our starting point: A closer look Summary of sub-national level results from [20xx]

Direction to countries: fill-in the scores in the right column with your most recent EVM results.

Sub-national level		
Criteria		Score
E1	Vaccine arrivals	
E2	Temperature management	
E3	Storage and transport capacity	
E4	Storage of vaccines and dry goods	
E5	Maintenance	
E6	Stock management	
E7	Distribution of vaccines and dry goods	
E8	Vaccine management	
E9	Waste management*	

Our starting point: Summary of lowest distribution (LD) level results from [20xx]

A closer look

Direction to countries: fill-in the scores in the right column with your most recent EVM results.

Lowest distribution (LD) level		
Criteria		Score
E1	Vaccine arrivals	
E2	Temperature management	
E3	Storage and transport capacity	
E4	Storage of vaccines and dry goods	
E5	Maintenance	
E6	Stock management	
E7	Distribution of vaccines and dry goods	
E8	Vaccine management	
E9	Waste management*	

Our starting point: Summary of A closer look Service-point (SP) level results from [20xx]

Direction to countries: fill-in the scores in the right column with your most recent EVM results.

Service-point (SP) level		
Criteria		Score
E1	Vaccine arrivals	
E2	Temperature management	
E3	Storage and transport capacity	
E4	Storage of vaccines and dry goods	
E5	Maintenance	
E6	Stock management	
E7	Distribution of vaccines and dry goods	
E8	Vaccine management	
E9	Waste management*	

Writing your own country's story



Iss

Exam

Im

av

Direction to countries: *List 3+ main challenges you found from past cIP or assessments. This does not need to be comprehensive. It is an overview of how assessment data was useful in identifying issues in the past.*

On the left, add a photograph to demonstrate this.

Resilience Challenges

Direction to countries: List 3+ opportunities from your last improvement plan. This does not need to be comprehensive, but demonstrate how data is used to drive improvements.

On the left, add a photograph to demonstrate this.

Examples:

- 1. Conduct a mapping study on all cold rooms NSCS to identify hot/cold spots**
- 2. Bi-annual update of the cold chain inventory**
- 3. iSC human resources assessments and gap analyses**



YOU have control over what the children in **[add country]** receive.



Q&A – The
history of EVM
in [country]

**Ask your
facilitator
anything!**



In just over 10 years since initiating the EVM process, countries including [fill in the blank] have conducted over 160 assessments to improve the supply chain, ensuring vaccines are available where and when they are needed to save lives.





**Congratulations on
completing module 2!**
You are now ready to dive deep
into the EVM framework.