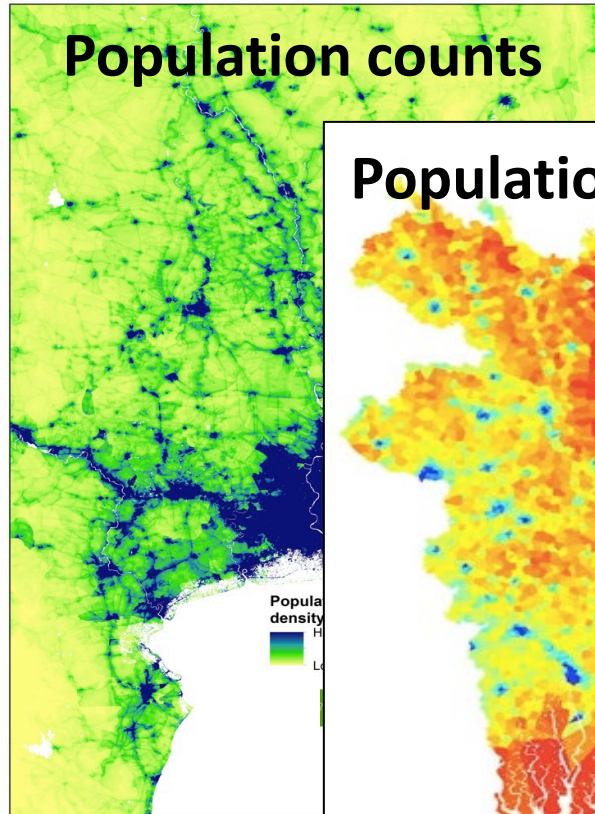


# Mapping the distribution of zero-dose children and their characteristics in low- and middle-income countries

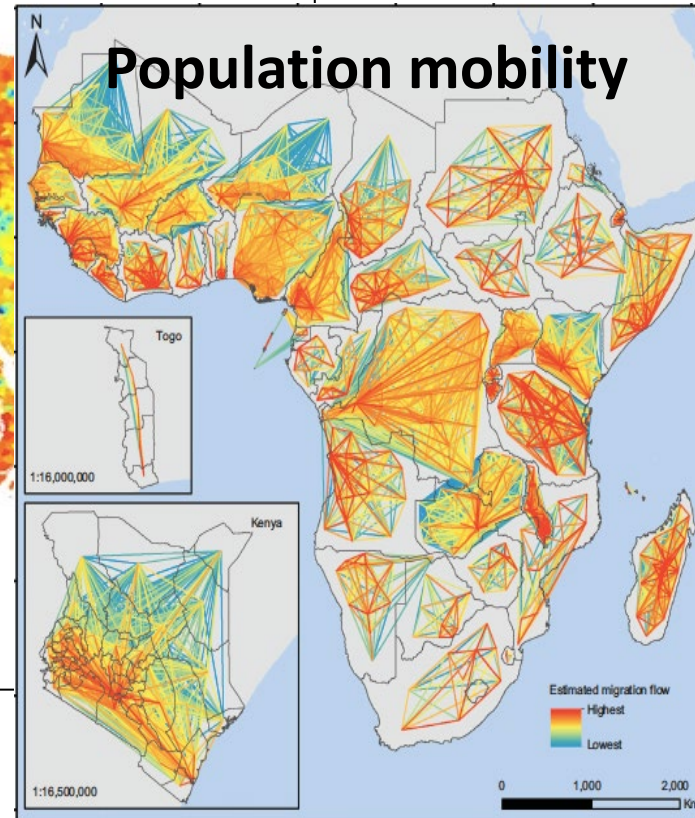
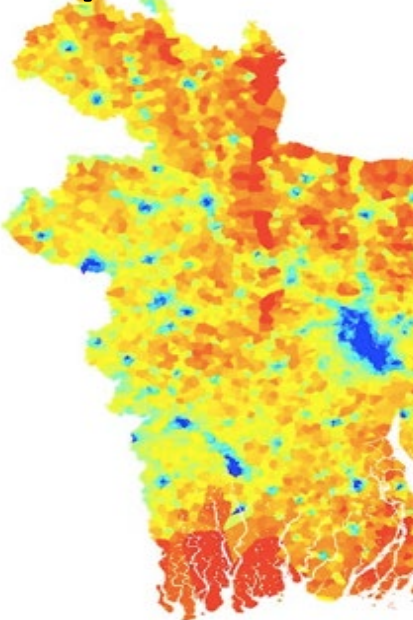
**C. Edson Utazi**  
*(and other WorldPop colleagues)*

*Global Vaccine and Immunization Research Forum 2023  
Incheon, Republic of Korea*

28-30 March, 2023



### Population characteristics



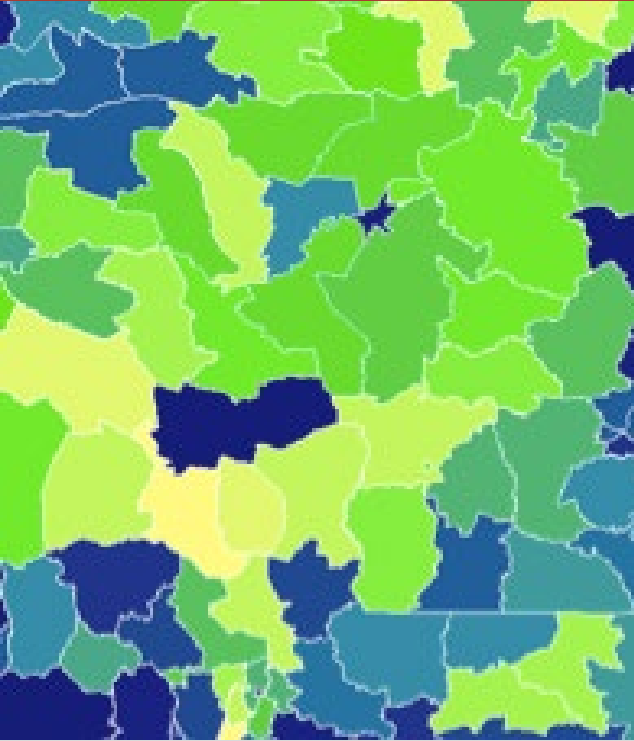
Applied research group

Mapping small area  
demographics of low and middle  
income countries

Open data, open peer-reviewed  
statistical methods, user  
engagement

Applications in epidemiology,  
maternal/newborn health,  
childhood vaccination

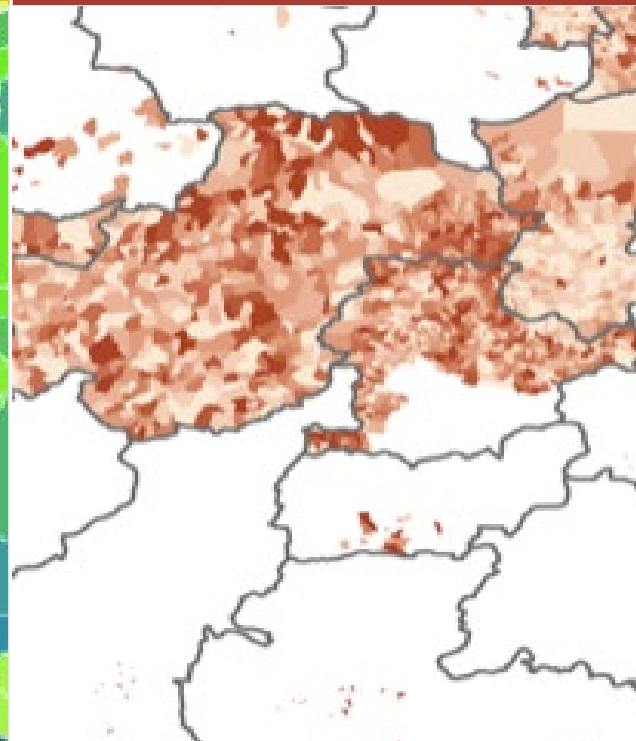
Coarse resolution



Outdated



Incomplete



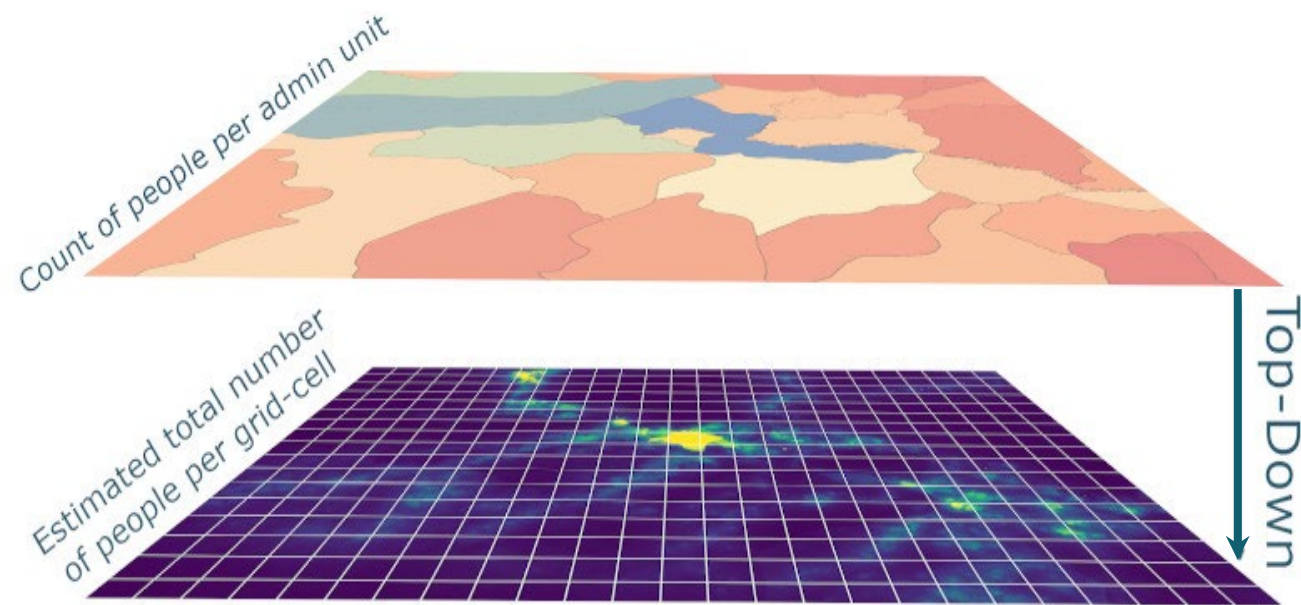
Inaccuracies, missing populations



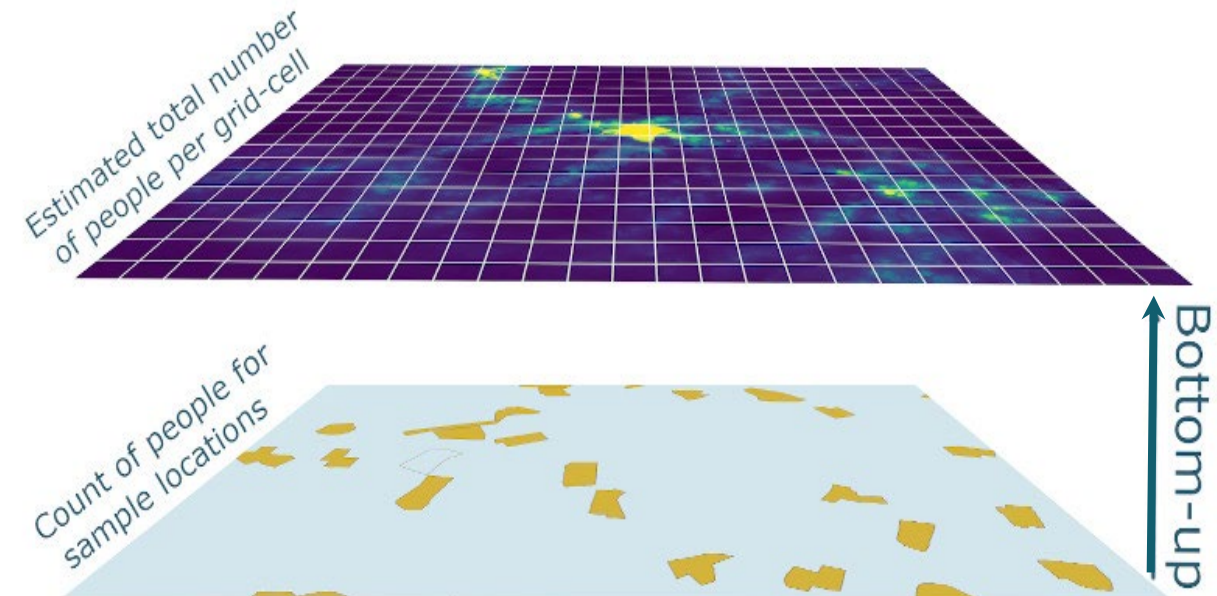
Demographic data challenges

# Approaches for creating gridded population datasets

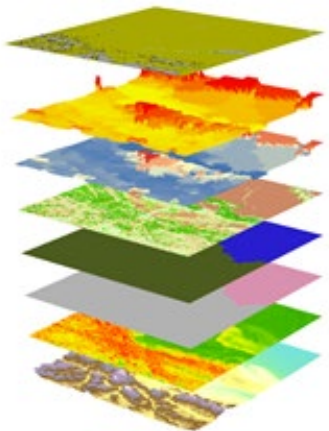
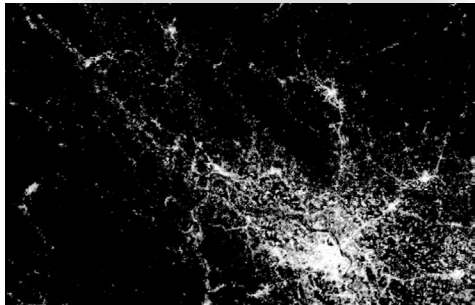
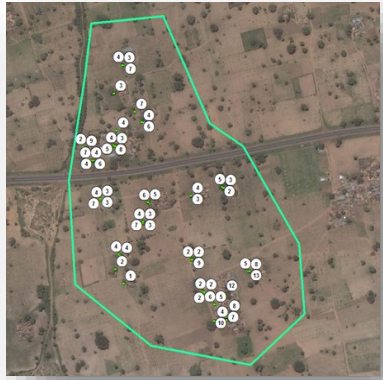
“Top down”  
modelling approach



“Bottom-up”  
modelling approach



# Approaches for creating gridded population datasets



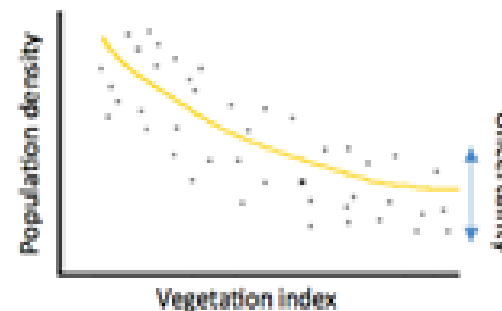
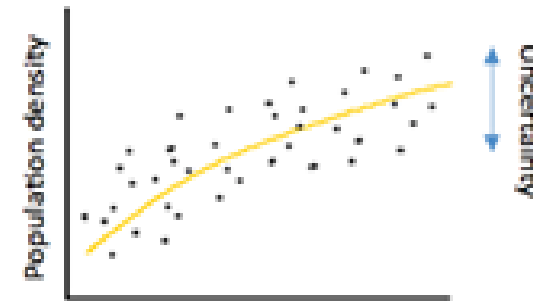
Population Data

Settlement

Geospatial covariates

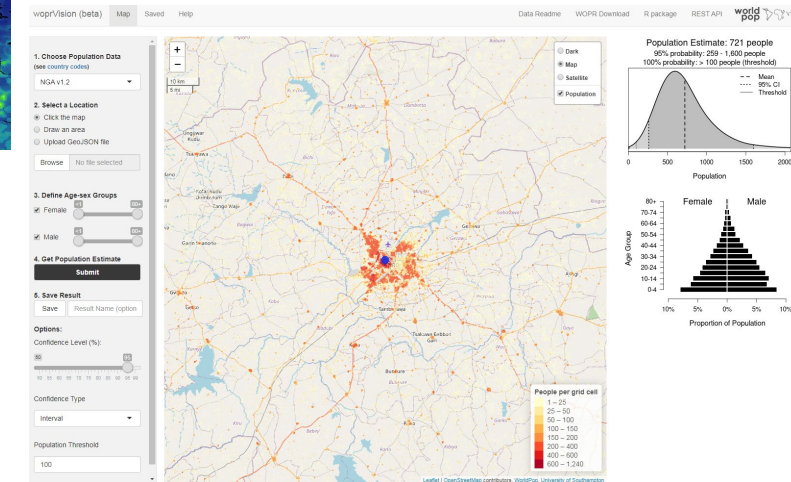
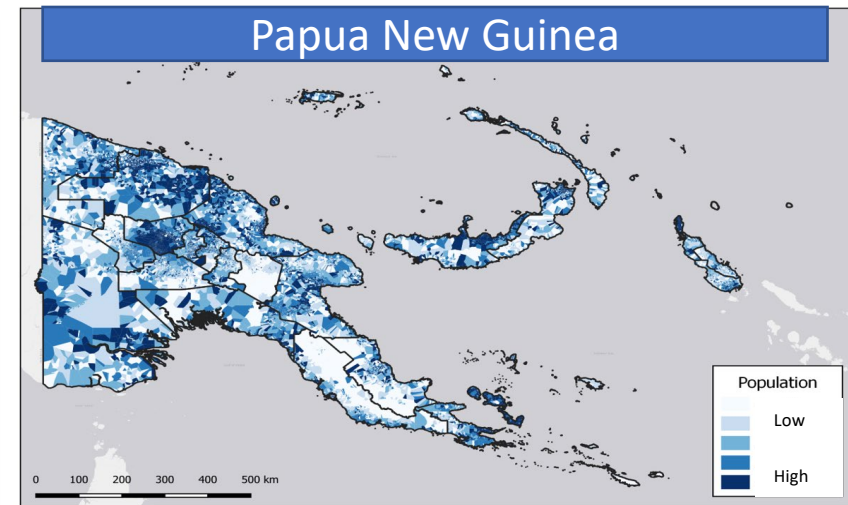
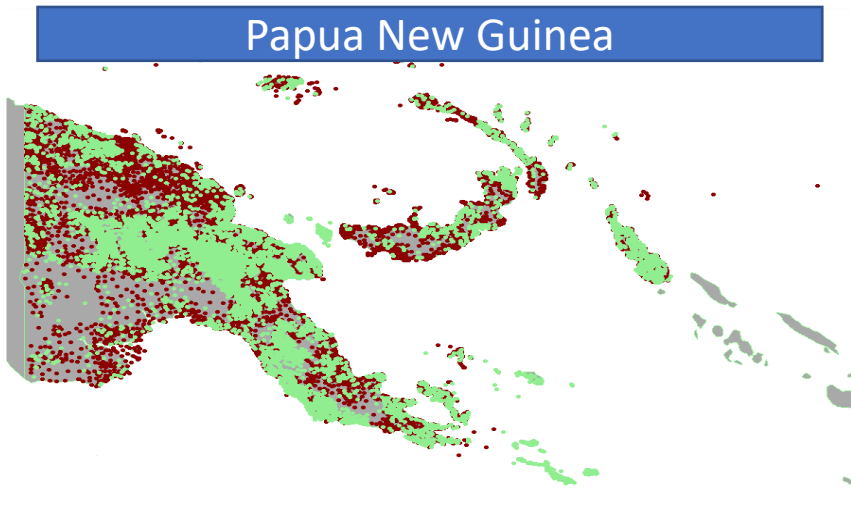
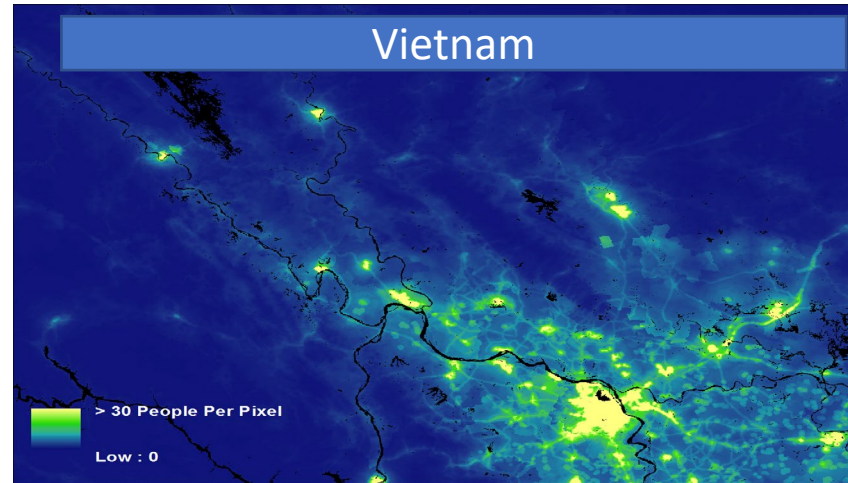
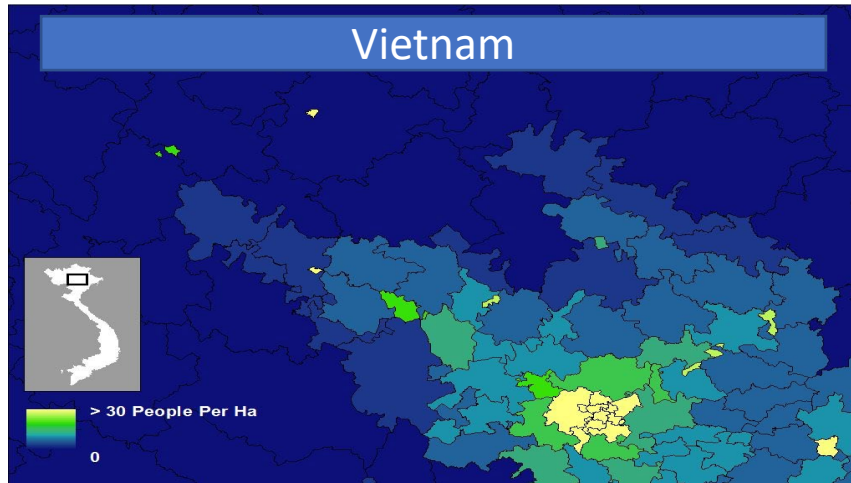
Spatial statistical model

Population estimates (ideally with uncertainty)

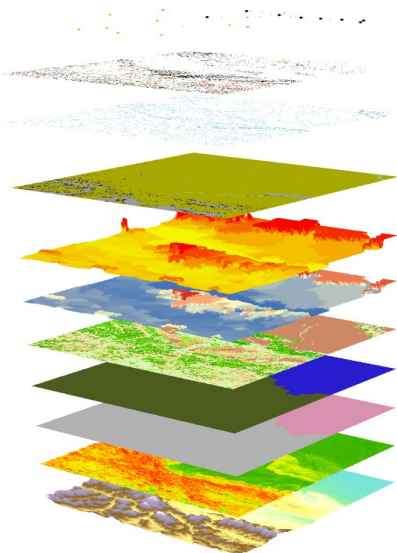
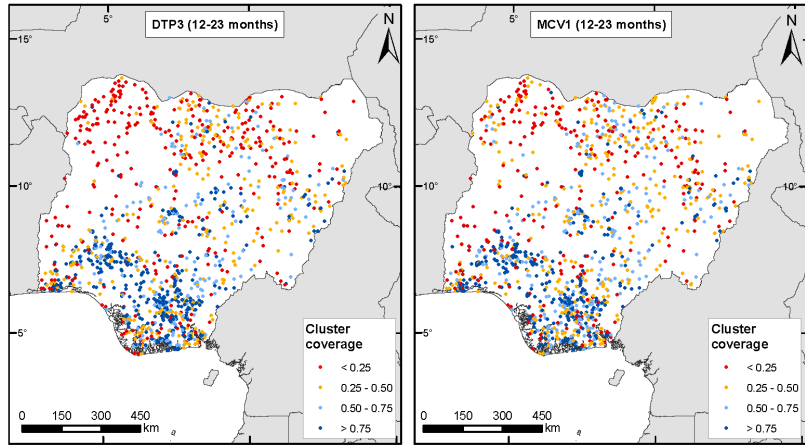


1	1	1	2	2	3	2	2	1	1	1	1	1	1
1	1	1	2	4	4	4	1	1	1	1	1	1	1
2	1	4	5	5	5	4	1	2	1	2	1	1	1
3	2	4	6	6	5	3	3	3	4	4	1	1	1
3	3	2	5	6	5	4	3	2	2	4	2	2	2
1	3	4	3	4	5	5	4	3	1	1	1	2	2
1	2	1	1	2	4	4	3	1	1	1	1	1	1
1	2	2	1	1	2	2	2	1	1	1	1	1	1
1	1	1	1	1	1	2		1	1	1	1	1	1

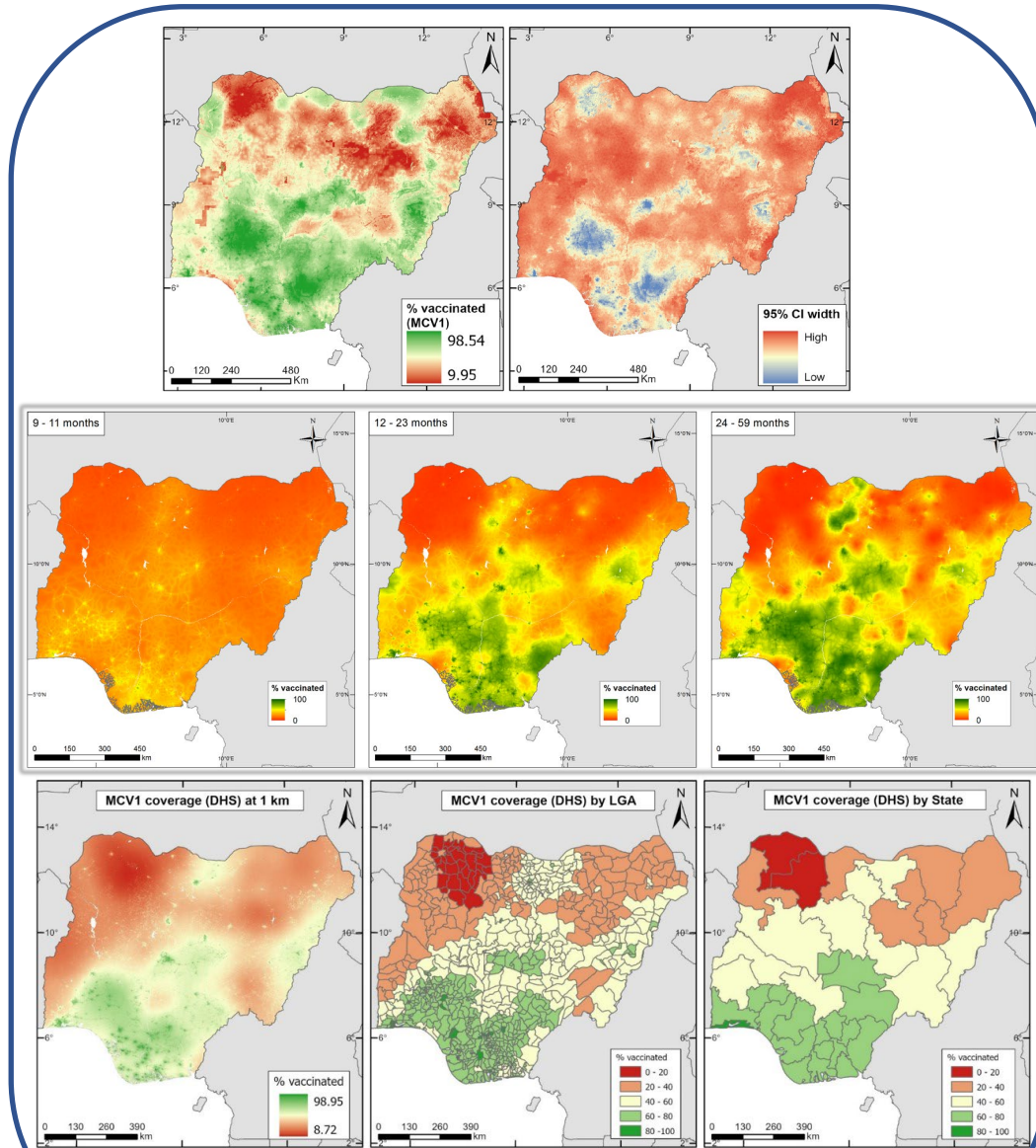
# Gridded population estimates



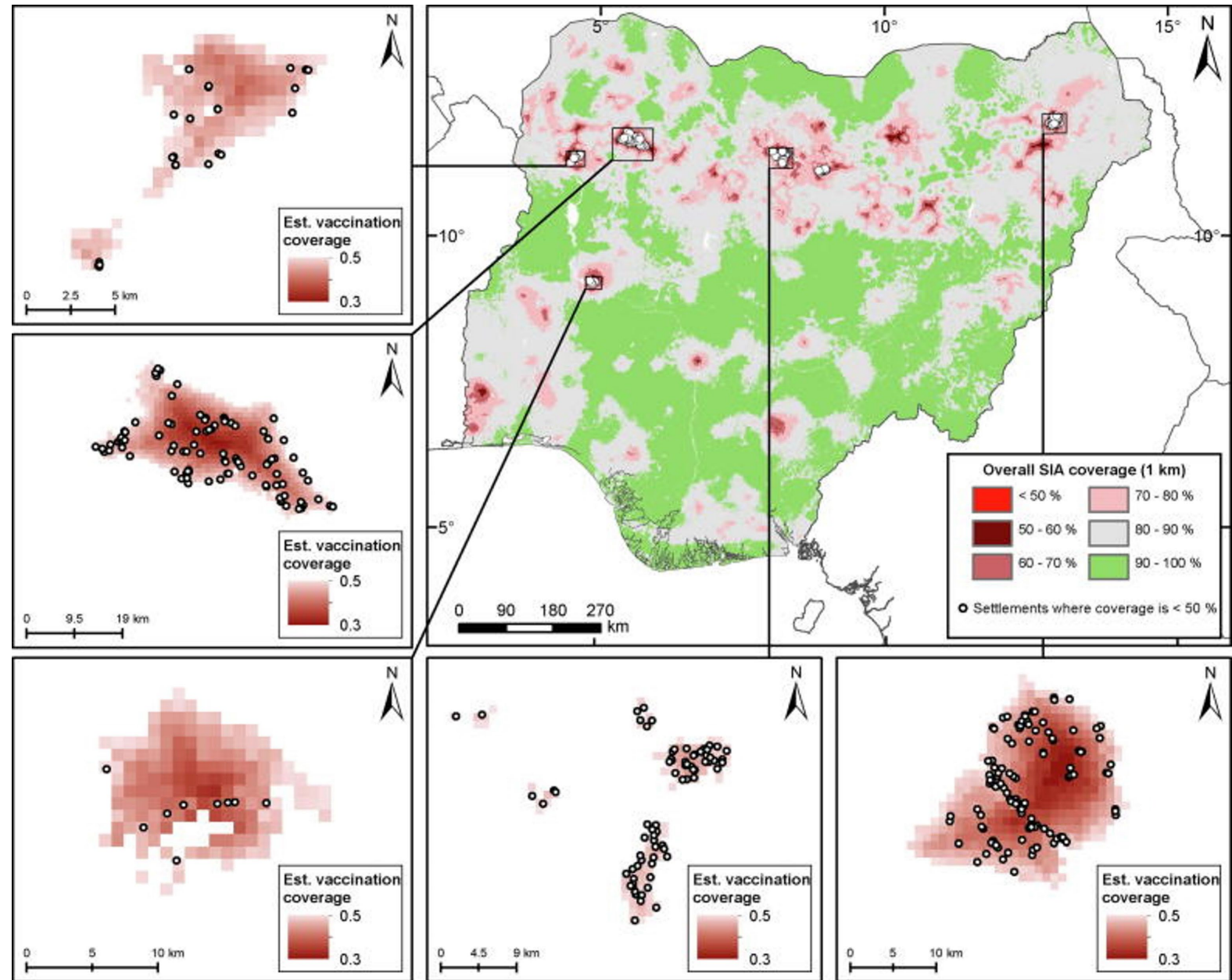
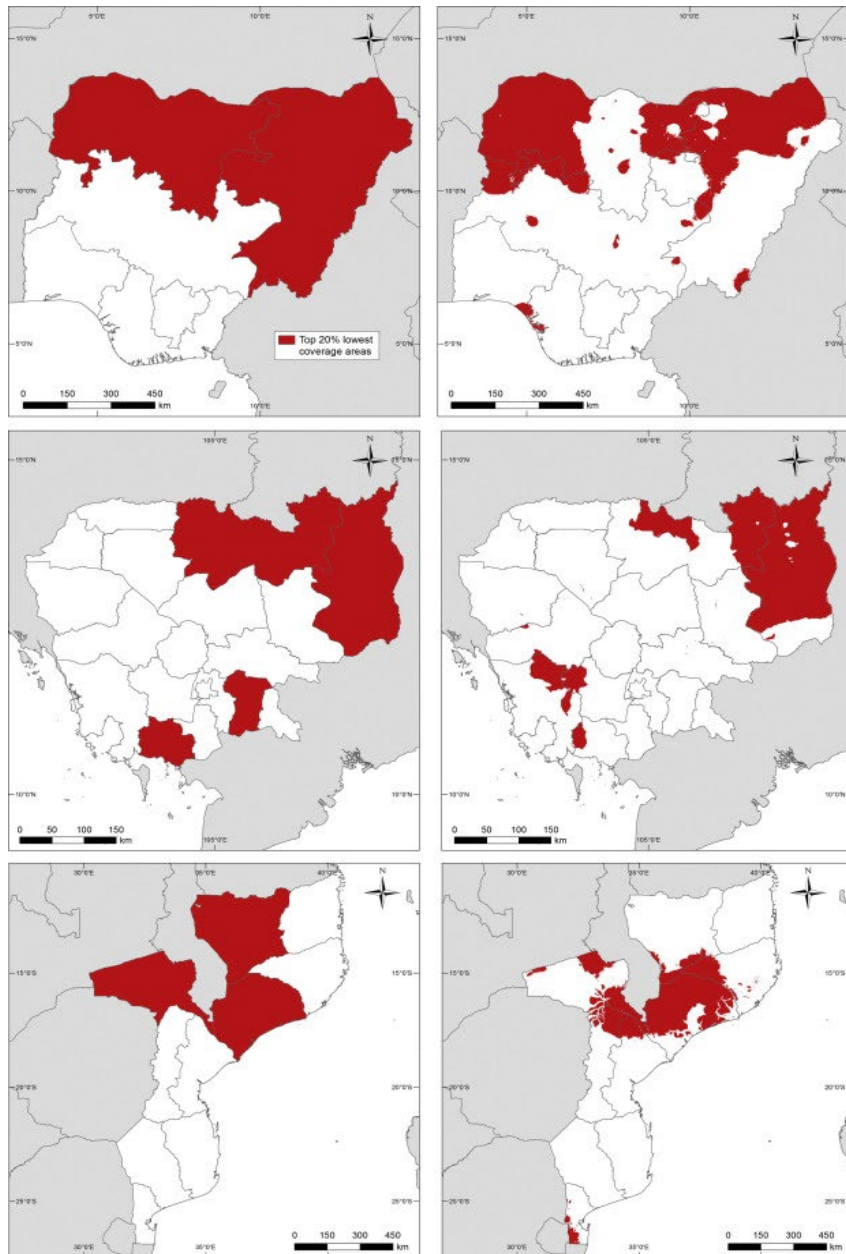
# Geospatial analysis of vaccination coverage



Spatial  
statistical  
model

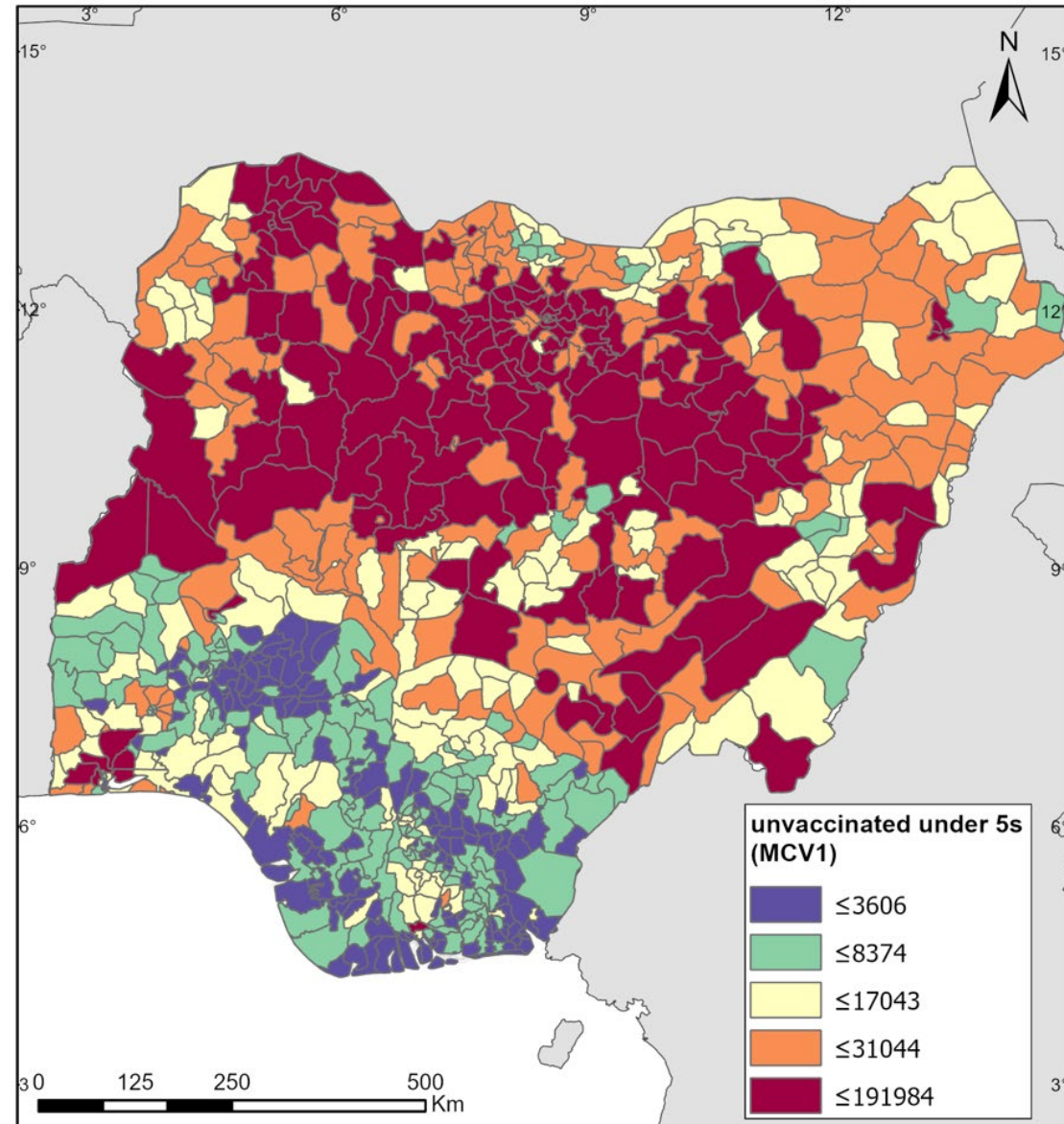
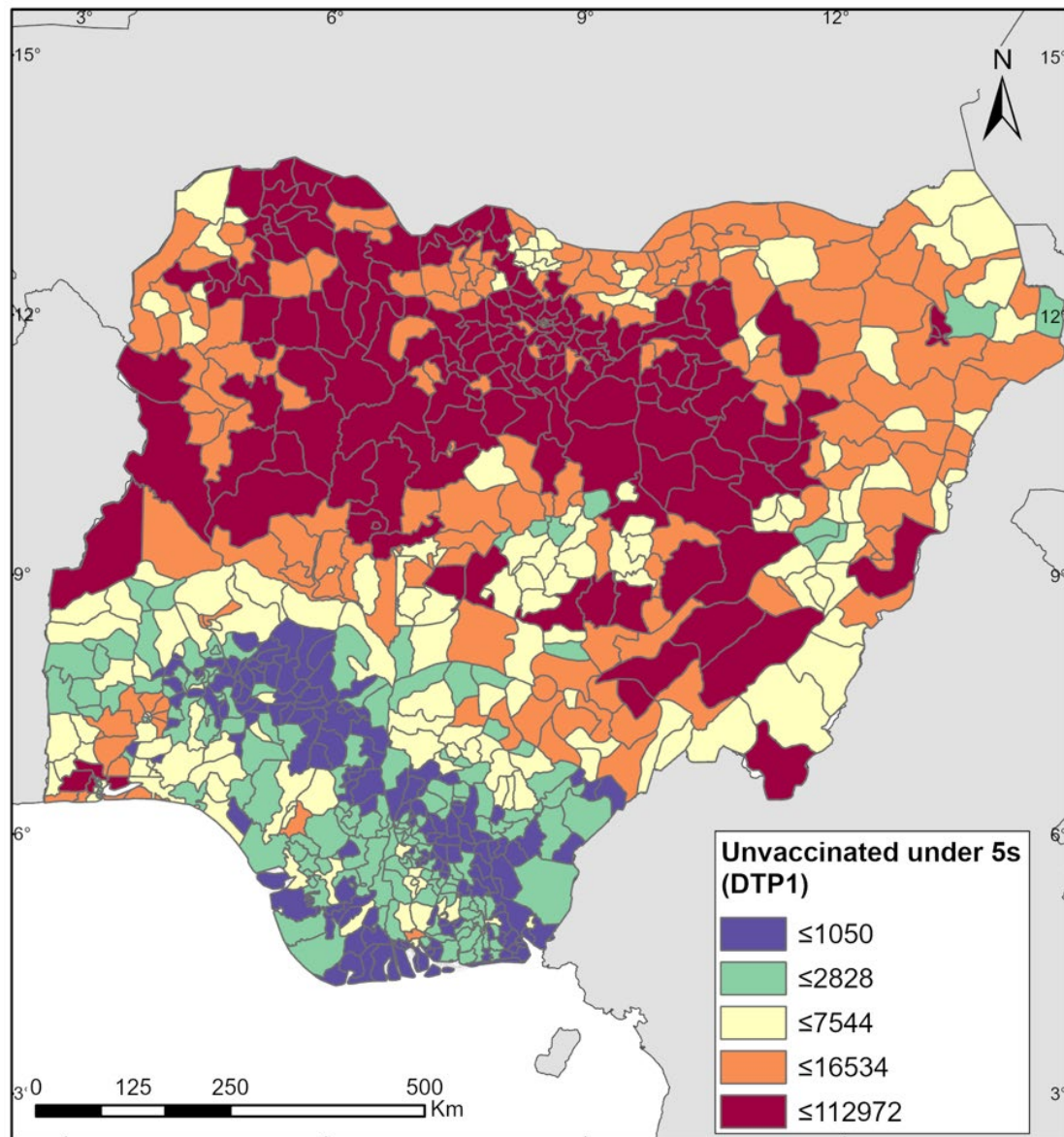


# Finding zero-dose children in low coverage areas

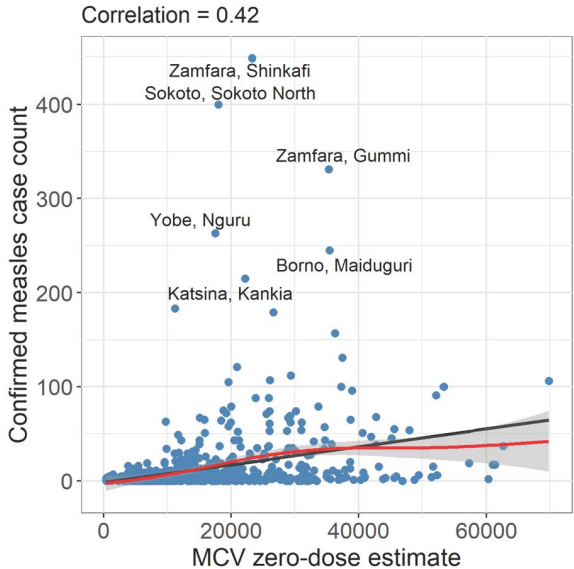
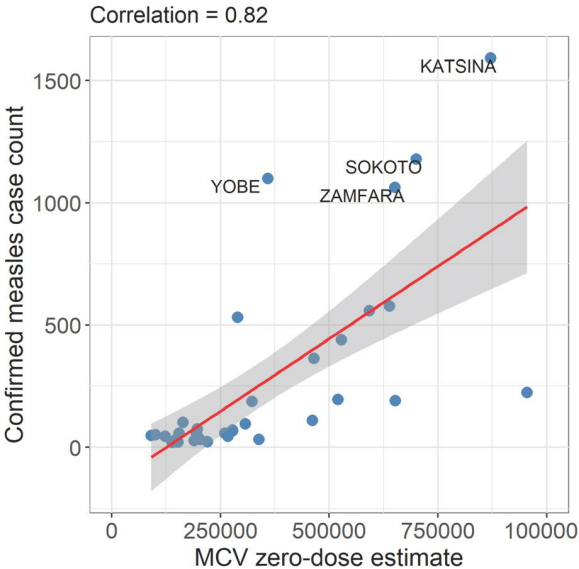
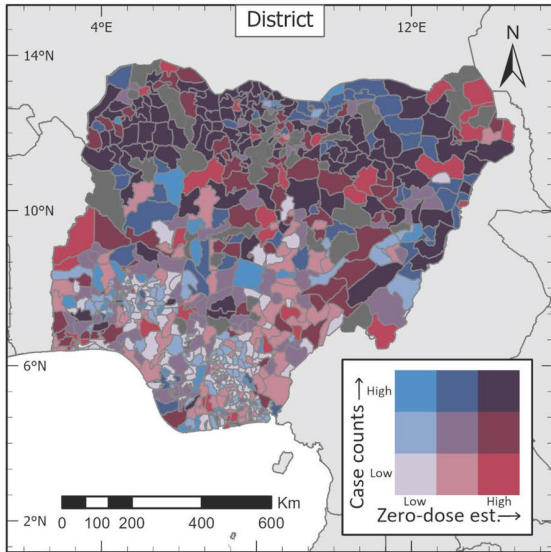
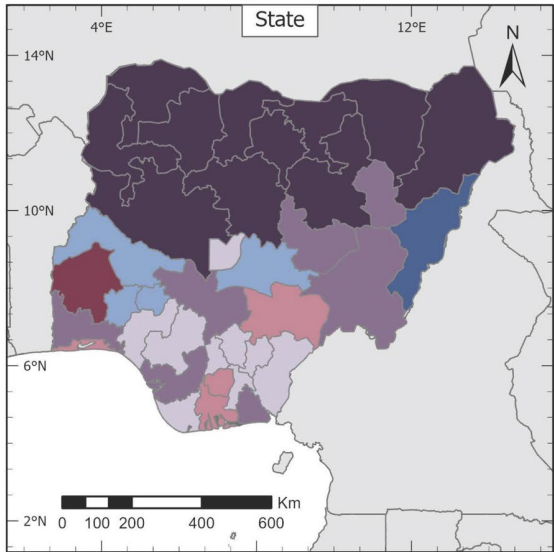
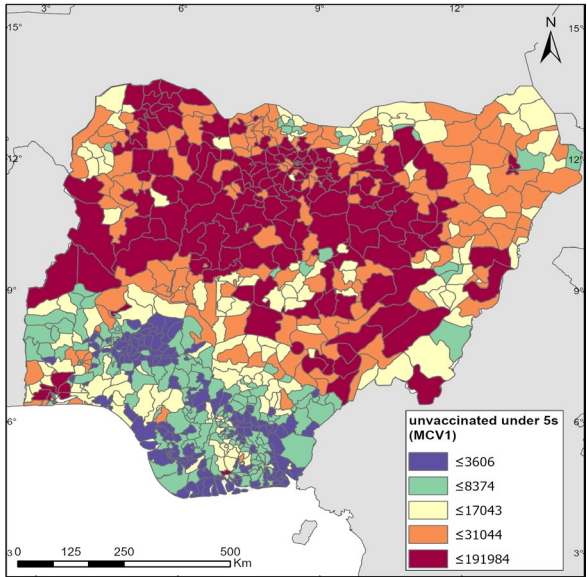
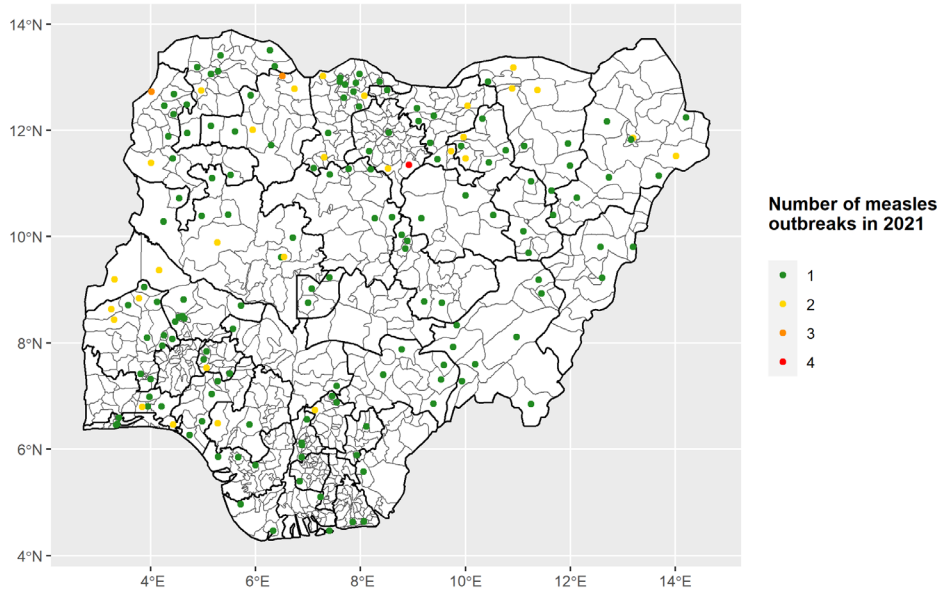




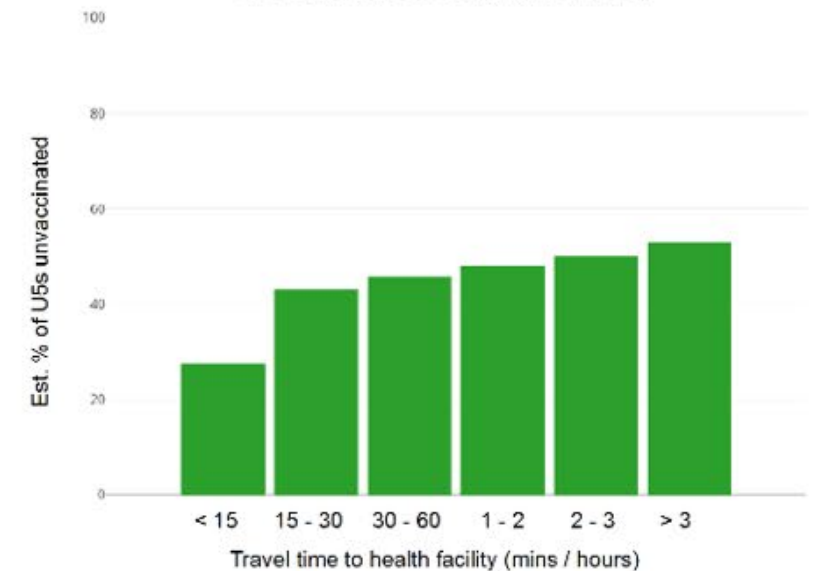
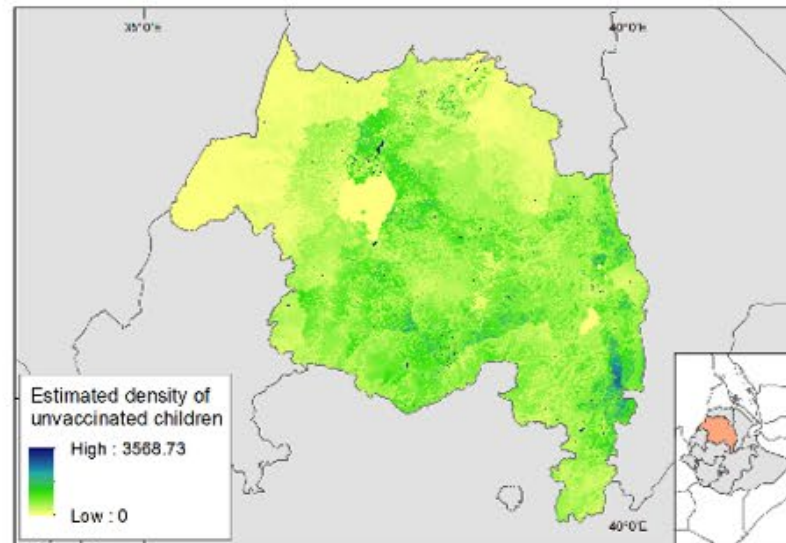
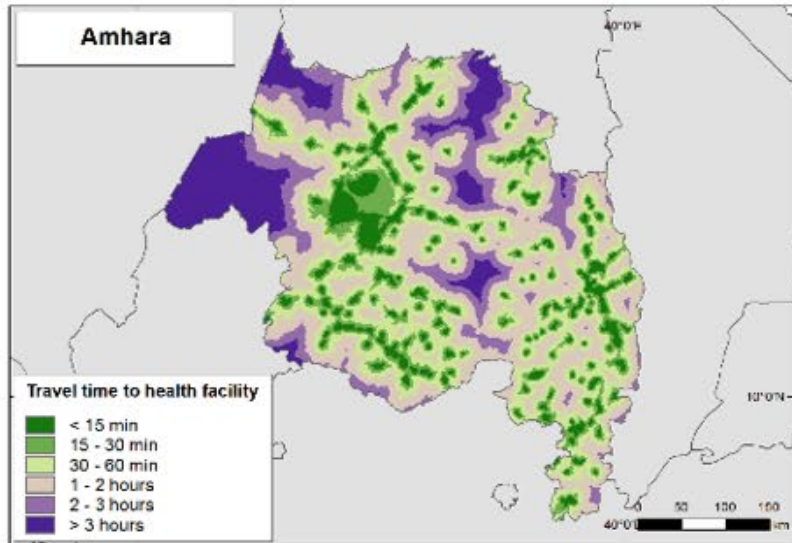
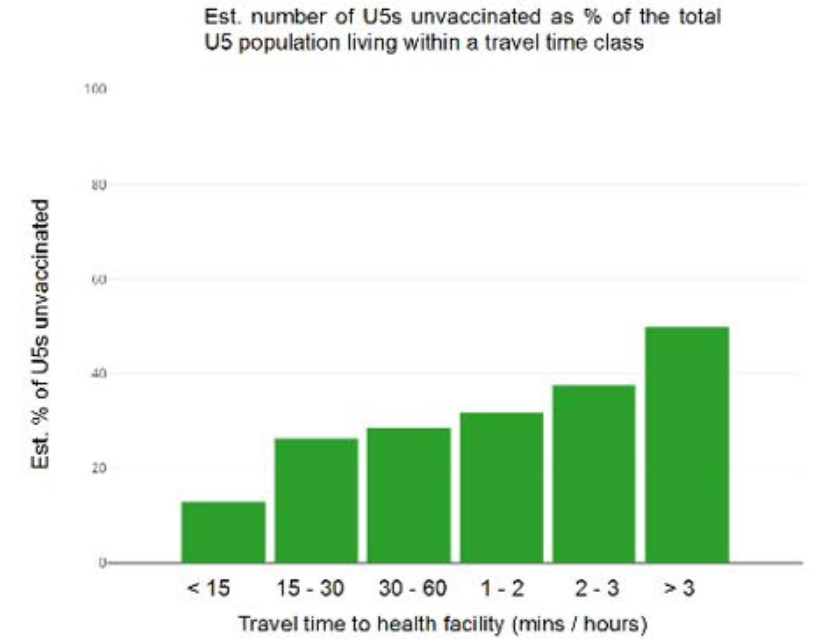
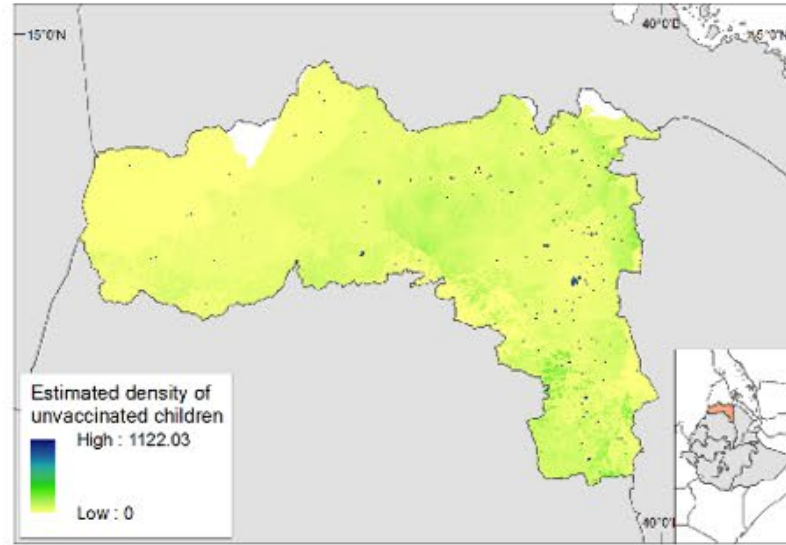
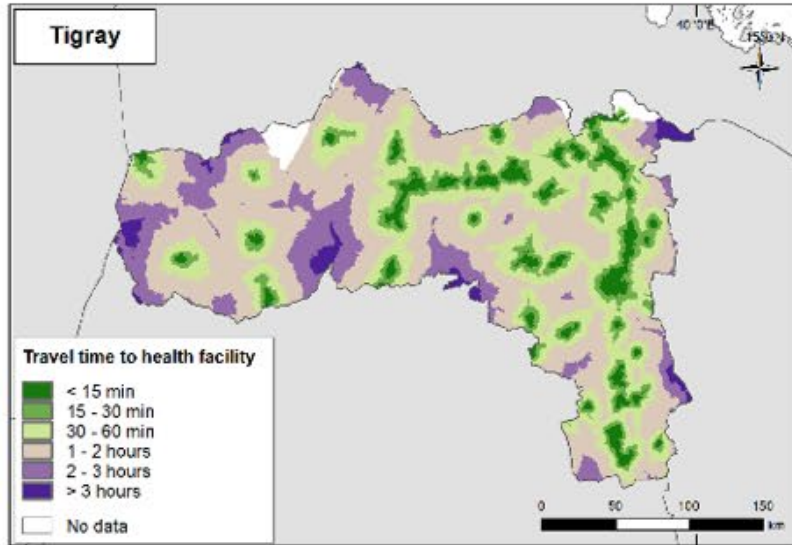
# Distribution of zero-dose children at the district level



# Zero-dose estimates vs disease incidence



# Remoteness vs the distribution of zero-dose children



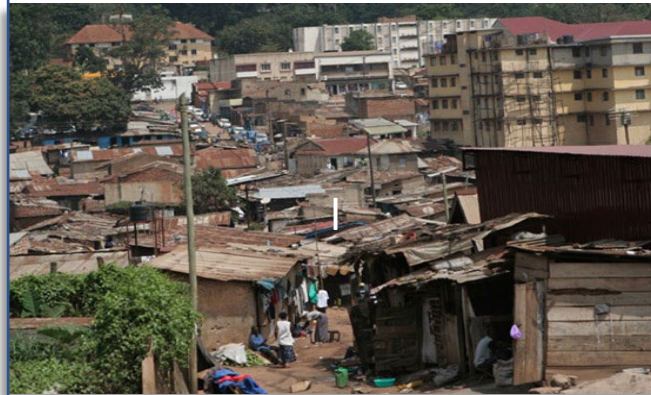
# Distribution of zero-dose children among special populations

- Communities at risk of non- and under-vaccination are often characterized by poverty, lack of access to health care and other basic services, civil/political unrest, poor sanitation practices, overcrowding, etc
- In 2017, the Equity Reference Group (ERG) for immunization identified these to be remote-rural, urban slums and conflict-affected areas

**Remote-rural**



**Urban slums**

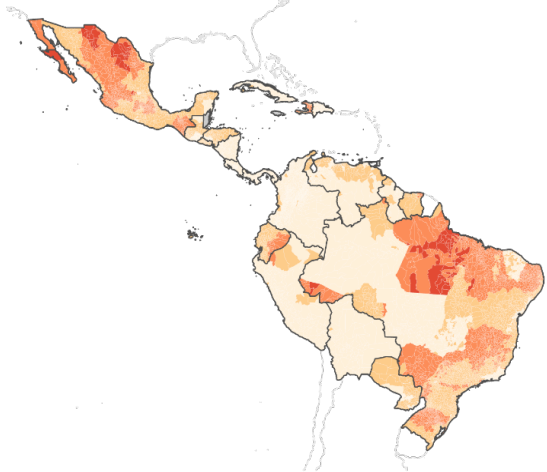


**Conflict areas**

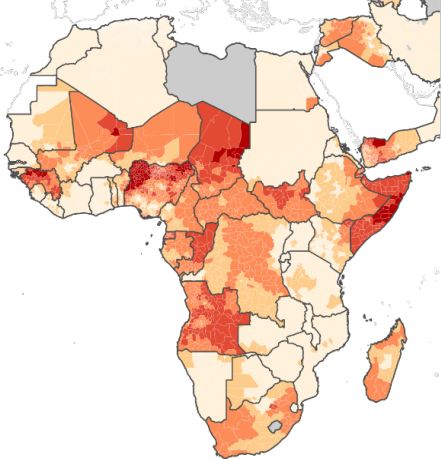


# Distribution of zero-dose children among special populations

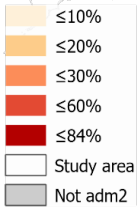
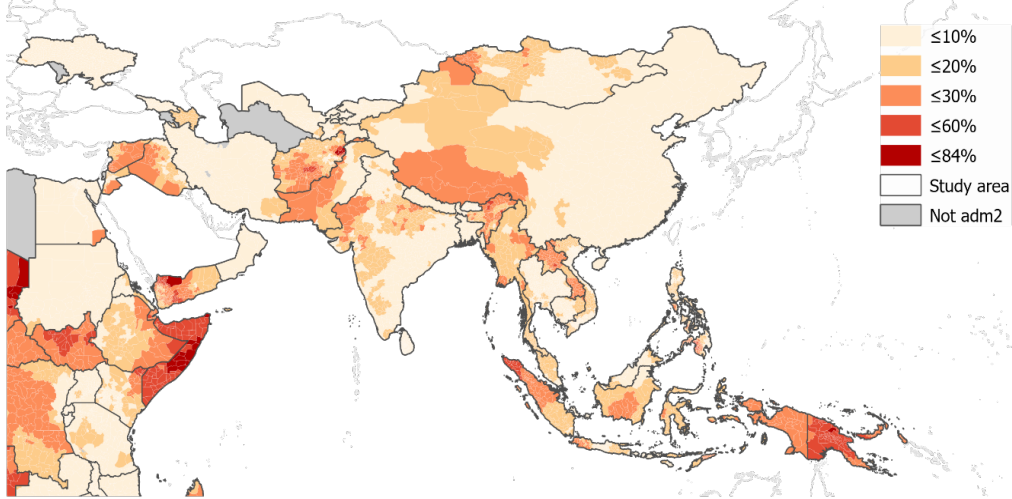
A. Latin America



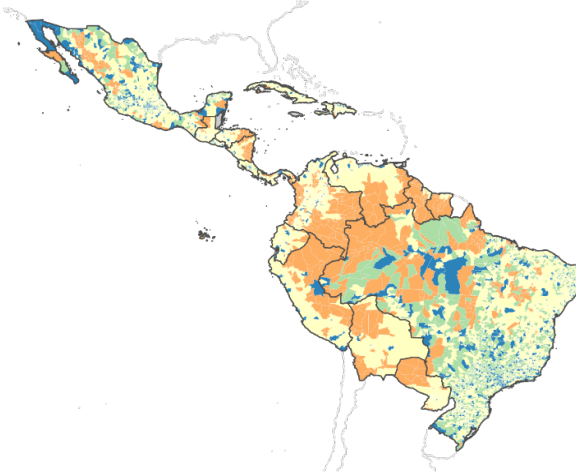
B. Africa



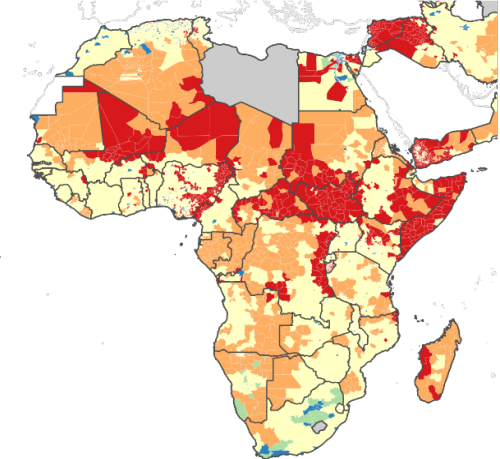
C. Asia



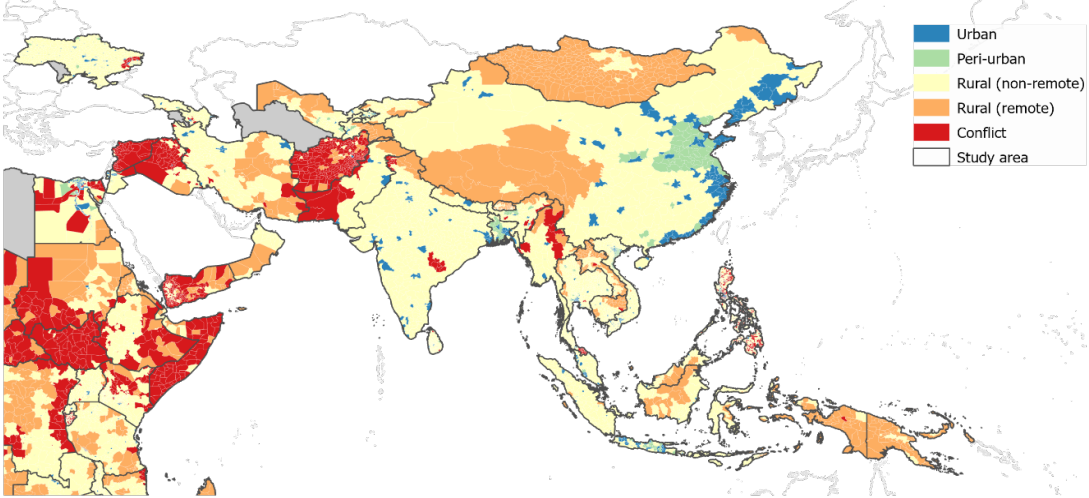
A. Latin America



B. Africa



C. Asia



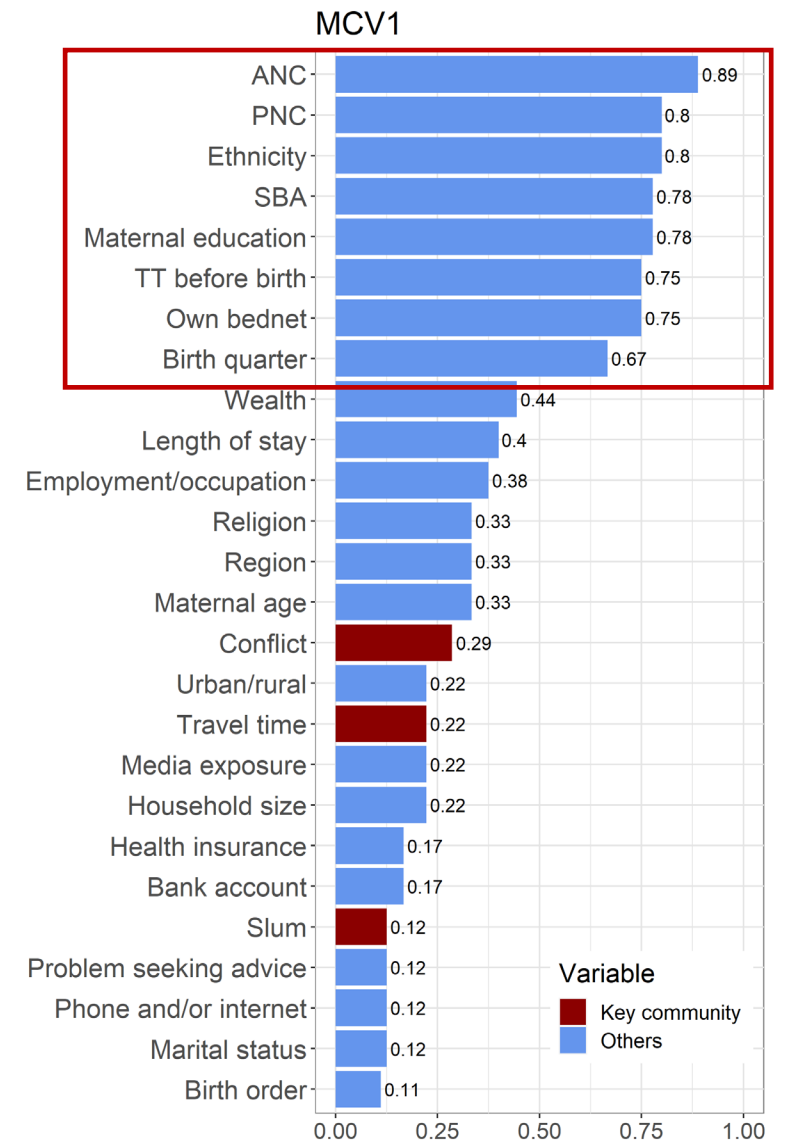
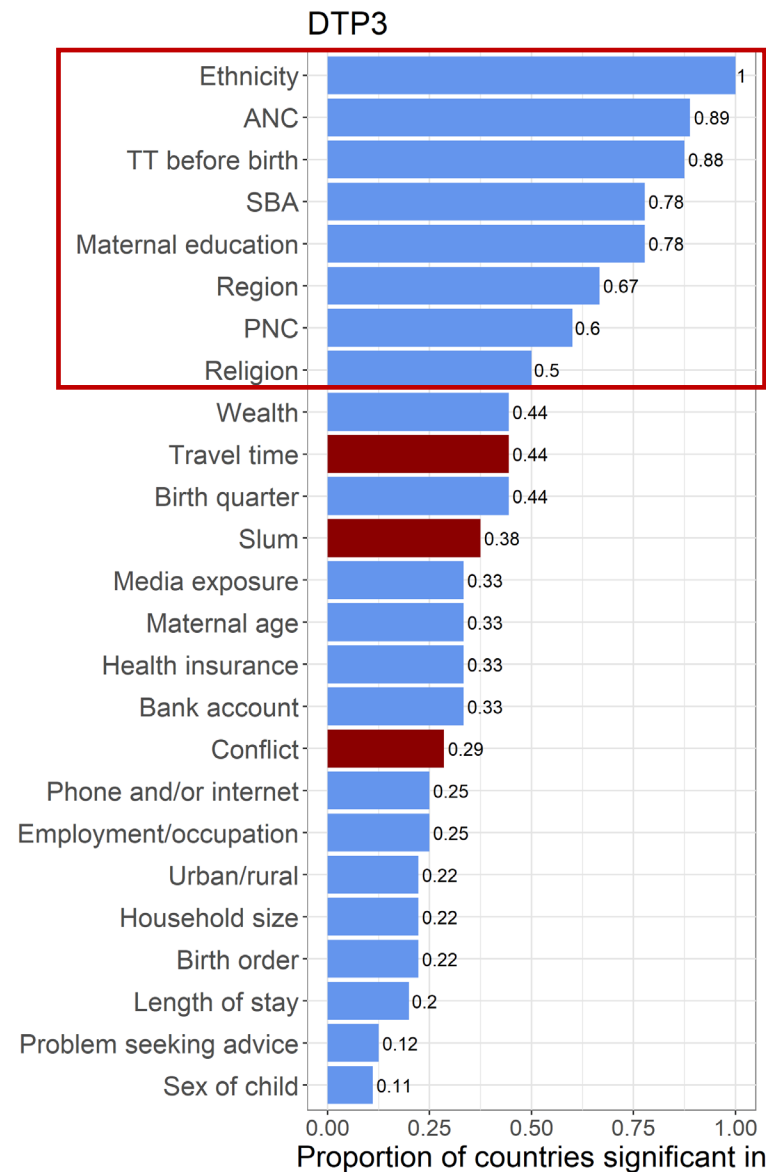
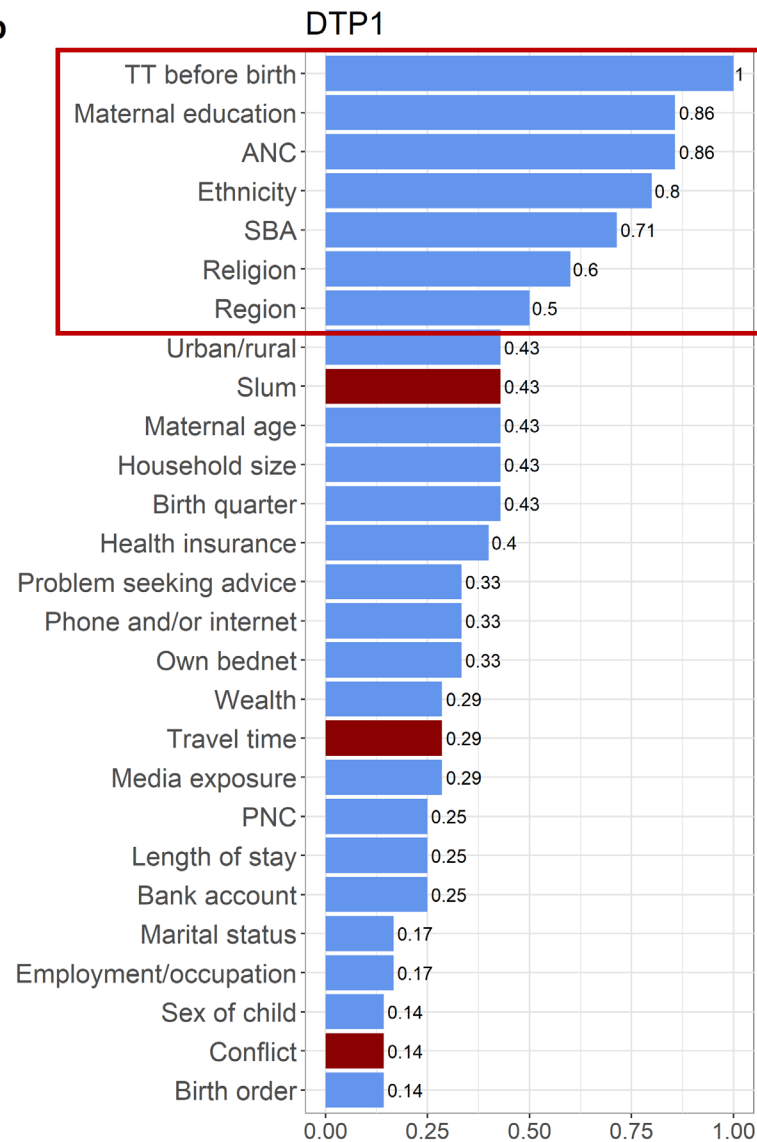
*Proportion of under 1s estimated to have not received the first dose of the DTP vaccine in 2019 at ADM2*

Geographical setting with the most unvaccinated under 1s in 2019 at ADM2



# Characteristics of zero-dose children in LMICs

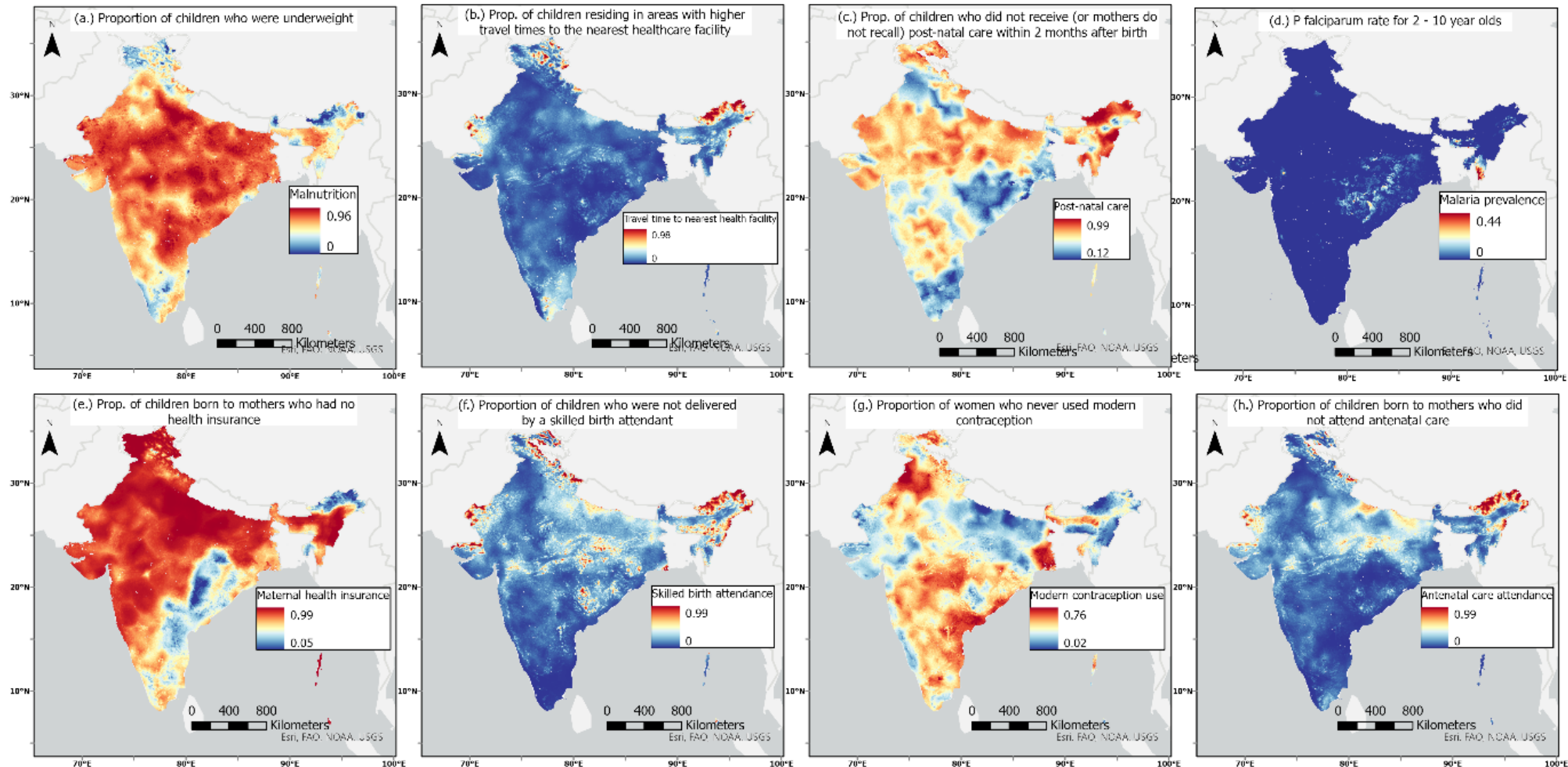
b



**Variable**  
■ Key community  
■ Others

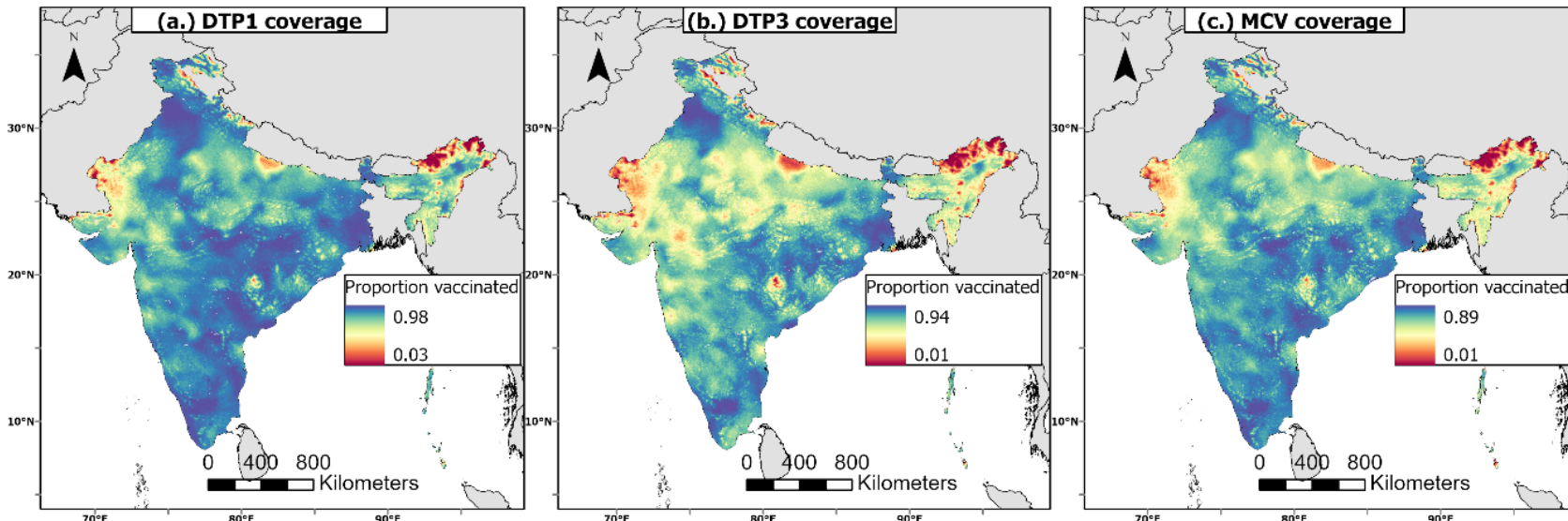
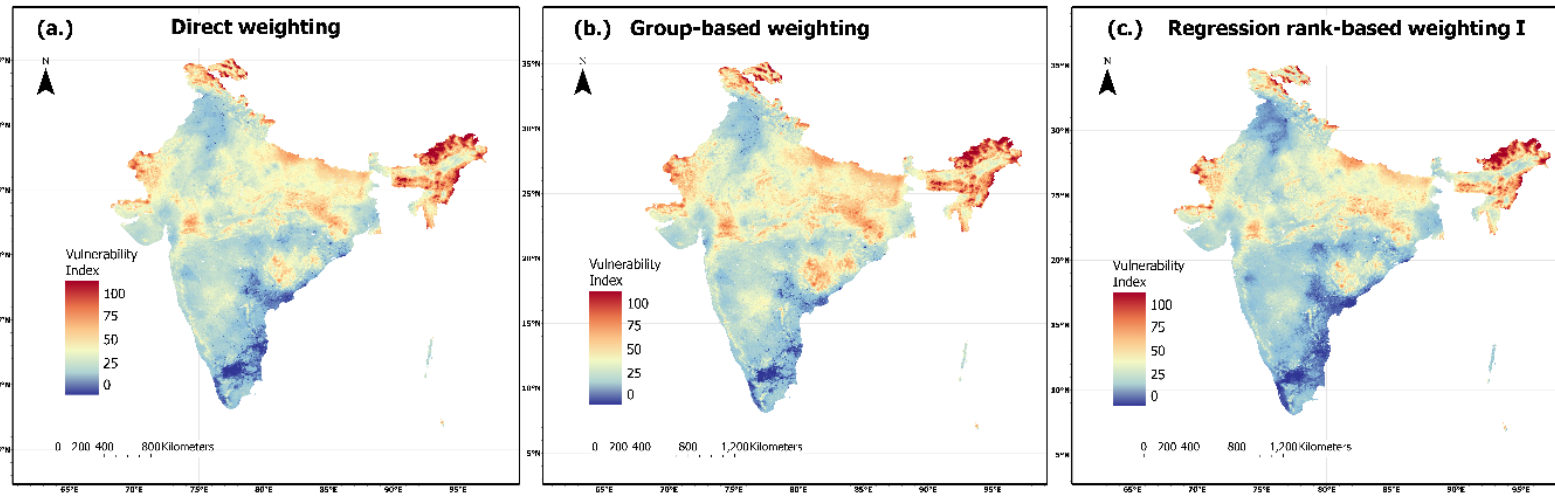
# Creating a zero-dose vulnerability index

Can we identify zero-dose children whether or not information on vaccination coverage is available?



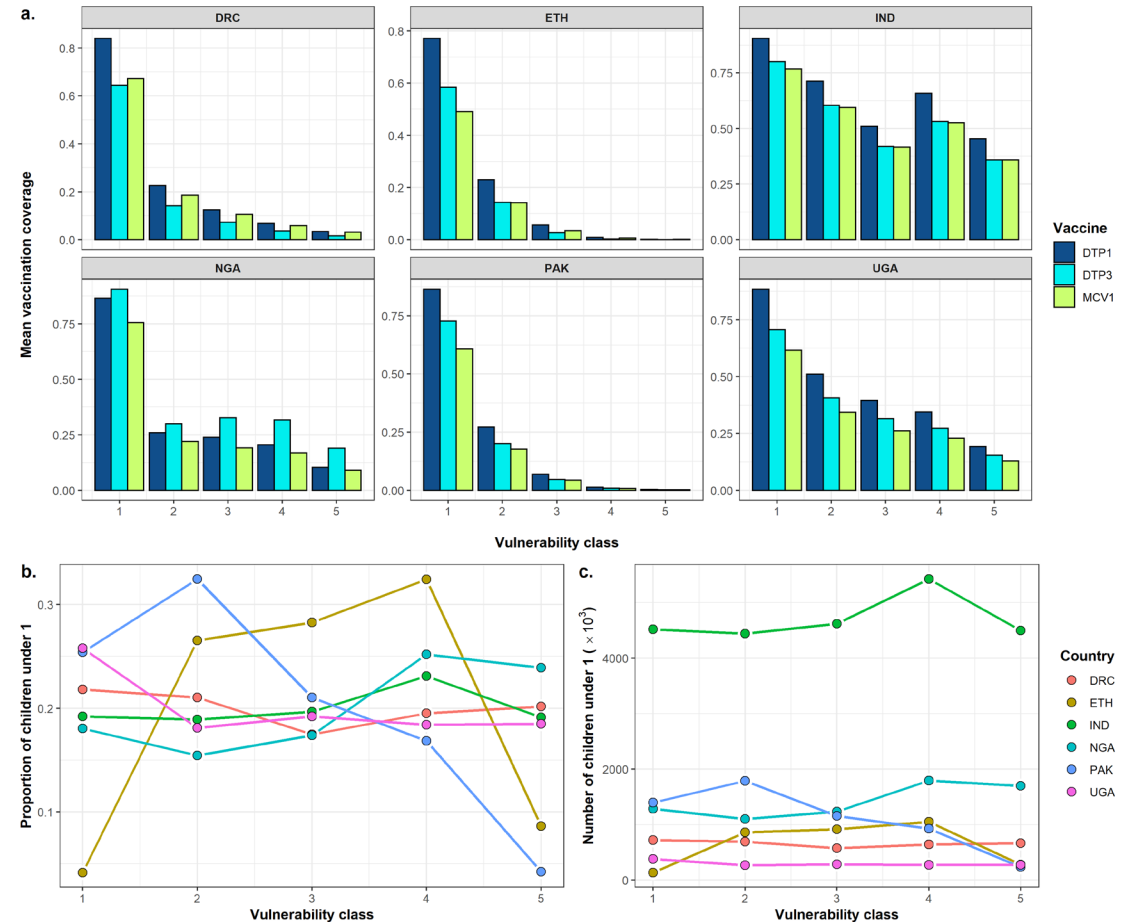
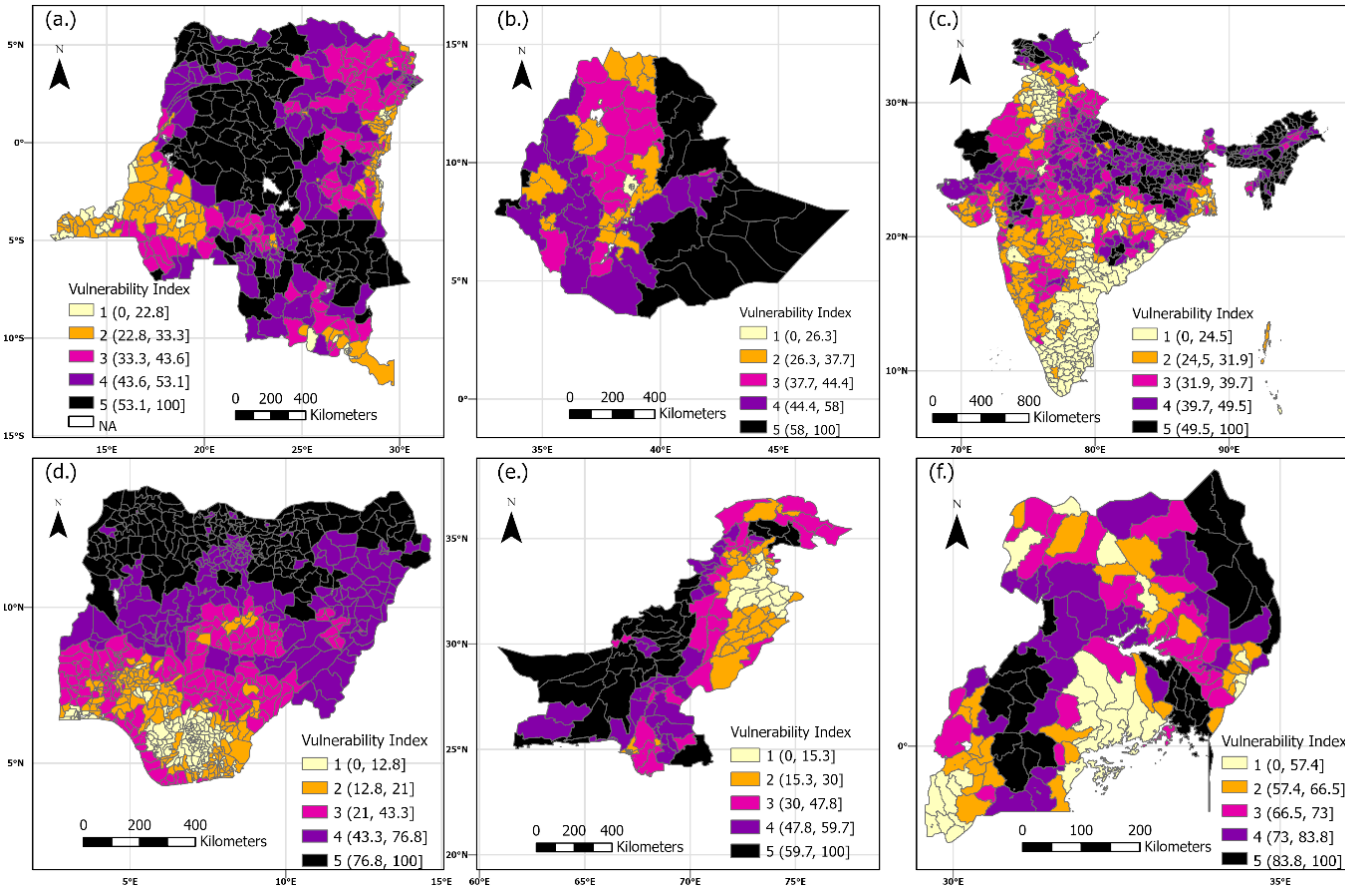


# Creating a zero-dose vulnerability index



The similarities among these methods for producing the index demonstrate that the index can be created with limited information and without data on vaccination coverage.

# Vulnerability index, vaccination coverage and population sizes within index classes





[www.worldpop.org](http://www.worldpop.org);  [@WorldPopProject](https://twitter.com/WorldPopProject)  
Email: [c.e.utazi@soton.ac.uk](mailto:c.e.utazi@soton.ac.uk);  [@chigedson](https://twitter.com/chigedson)



#### Some references:

<https://www.sciencedirect.com/science/article/pii/S0264410X18301944?via%3Dihub>  
<https://www.nature.com/articles/s41467-019-09611-1>  
<https://www.medrxiv.org/content/10.1101/2022.10.10.22280894v1>  
<https://onlinelibrary.wiley.com/doi/full/10.1002/sim.9586>  
<https://journals.plos.org/globalpublichealth/article?id=10.1371/journal.pgph.0000244>  
<https://journals.sagepub.com/doi/full/10.1177/0962280218797362>  
<https://www.ncbi.nlm.nih.gov/pmc/articles/PMC8211249/>  
<https://bmchealthservres.biomedcentral.com/articles/10.1186/s12913-021-06370-y>