

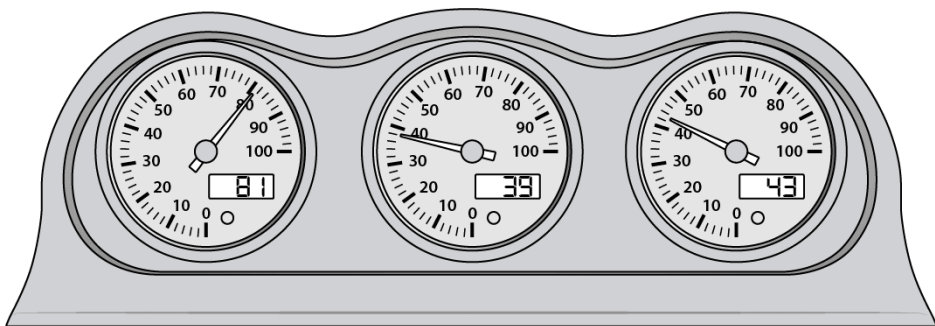


Lumen Dash

PC HARDWARE MONITORING SYSTEM

Lumen Dash

User's Manual



For Your Safety

To prevent damage to your Lumen Dash or injury to yourself or others, read the following safety precautions in full before using the product. Keep this page accessible for anyone who may use the device.

The following warnings are intended to help you use Lumen Dash safely and responsibly:



This icon marks warnings. To prevent possible injury, read all warnings before using this Lumen Labs product.

■ WARNINGS

Use only the included 12V power adapter

Substituting an unapproved power source could result in overheating or permanent damage.

Do not open or disassemble the device

There are no user-serviceable parts inside. Tampering with the product may void your warranty or create a fire hazard.

Avoid contact with liquids

Lumen Dash is not water-resistant. Exposure to moisture may cause malfunction or electric shock.

Do not operate near flammable gases

Using electronics near volatile gases could result in fire or explosion.

Disconnect if you smell smoke or burning

If you detect unusual heat, odor, or behavior from the device or power supply, unplug it immediately and contact support.

Keep cables free of tension and sharp bends

Avoid sharp bends or tension on the cords.

Do not operate Lumen Dash without proper ventilation

Prolonged use in small enclosed or high-temperature environments may affect performance.

Secure the unit on a stable, flat surface

Prevent the unit from falling or being knocked over during use.

Lumen Dash



Getting Started

1

What's in the Box.....	1
Understanding the Gauges.....	1
Installing the Software.....	2
Connecting the Device.....	2



Using Lumen Dash

3

Overview of the Interface.....	3
Selecting a Gauge.....	3
Hardware → Sensor Type → Sensor.....	4
Saving and Loading Presets.....	4



App Features & Settings

5

Adjusting Gauge Scaling.....	5
Systems Options Menu.....	6
System Tray Menu Functions.....	6



Troubleshooting & Support

7

Common Issues.....	7
Software Updates.....	8
Getting Support.....	8



Technical Reference

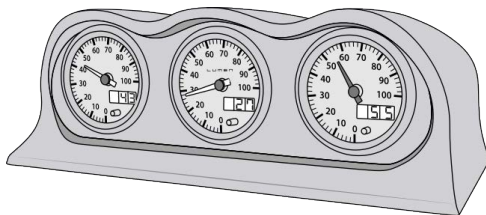
9

Power Requirements.....	9
Care and Maintenance.....	9
Specifications.....	10
Warranty Information.....	10

Getting Started

What's in the Box

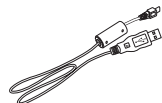
Confirm that the package contains the following items:



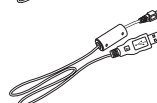
☐ LD100 Lumen Dash

☐ User's Manual (*this booklet*)

☐ Quick Start Guide



☐ Power supply

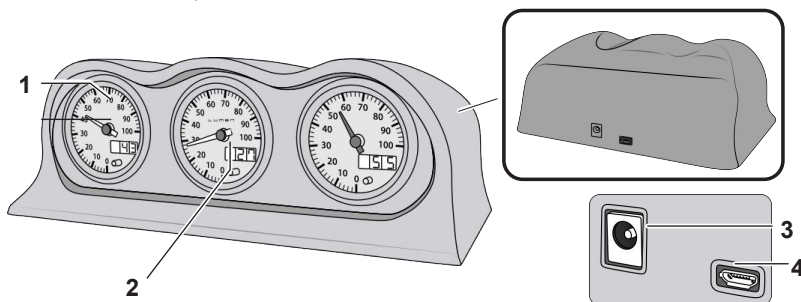


☐ USB cable

Understanding the Gauges

Before diving into the rest of the guide, spend a few minutes getting to know the layout and features of your Lumen Dash. It'll make the setup process smoother, and you can always jump back to this section if you need a refresher later.

Device Layout



1 Gauge displays

2 Color control button

3 Power Supply input

4 USB input

i The Color Control Button Press the button to cycle between 7 colors, two modes, and off.

Installing the Software

Follow the steps below to install the software

- 1 Visit our official site:**
www.lumenlabs.app/download
- 2 Download the installer and run the setup file.**
- 3 Follow the on-screen prompts to complete installation.**

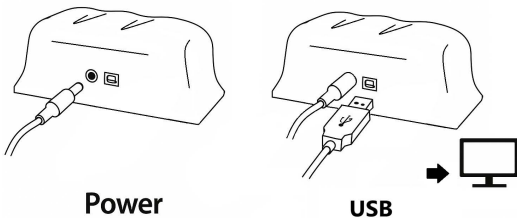
Connecting the Device

Follow the instructions below to connect the device:

1 Connect the provided power supply.

☒ **Use only the included 12V power adapter**
Read and follow the warnings and cautions on page ii of this manual.
Use only the included 12V power adapter. Substituting an unapproved power source may results in overheating, malfunction, or permanent damage.

2 Connect the Lumen Dash to your PC.



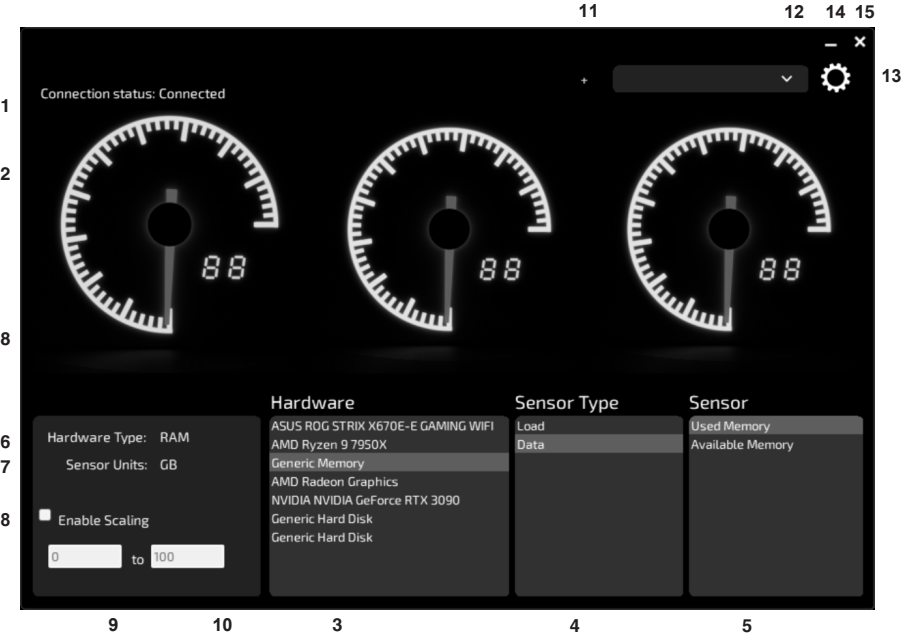
With the desktop software running on the computer, the gauges will light up and perform a sweep, and the desktop client will indicate that the device is connected. If this is your first time setting up, the gauges will read zero. Continue to the next chapter to begin displaying real-time system data.

Disconnecting the Device

To disconnect the device, first unplug the USB. Wait for the gauges to return to zero and power off, then unplug the power adapter.

Using Lumen Dash

Overview of the Interface



- | | | |
|--------------------------------|----------------------------------|---------------------------------|
| 1 Connection status | 6 Hardware type indicator | 11 Add new preset button |
| 2 Gauge selection | 7 Sensor unit indicator | 12 Preset selection |
| 3 Hardware selection | 8 Enable scaling button | 13 Settings menu button |
| 4 Sensor type selection | 9 Scaling minimum value | 14 Minimize |
| 5 Sensor selection | 10 Scaling minimum value | 15 Close window |

Selecting a Gauge

The three gauges displayed in the desktop app directly match the physical gauges on your Lumen Dash. Click any gauge to select it — it will highlight in yellow to show it's active. The settings located in the lower section, now apply to the currently selected gauge.

Hardware → Sensor Type → Sensor

With a gauge selected, use the three boxes to configure the data source:

Hardware — Choose the component you want to monitor (e.g., CPU, GPU, RAM)

Sensor Type — Select the type of metric (e.g., Temperature, Clock, Load)

Sensor — Choose the specific reading (e.g., Core 1 Clock, CPU Package Temp)

Once selected, the gauge will begin displaying that sensor's data in real time. The hardware type and units are displayed in the box to the left.

Saving and Loading Presets

Once you've configured your gauges, you can save the setup as a preset for quick access later.

To save a new preset:

- 1 Configure the gauges how you want them in the preset.**
- 2 Click the "+" icon next to the preset drop-down.**
- 3 Enter a name for your preset.**
- 4 Press Enter to save.**

Presets store:

- Gauge assignment (left, middle, right)
- The chosen hardware, sensor type, and sensor
- Any scaling values you've applied

You can switch between presets at any time using:

- The drop-down located in the main layout
- The system tray menu

Presets are ideal for swapping between different monitoring modes, such as:

- A gaming preset with GPU temp, CPU usage, and fan speed
- A bench-marking preset with clock speed, voltage, and temperature scaling

To delete a preset, open the Settings menu and select the preset from the drop-down.

App Features & Settings

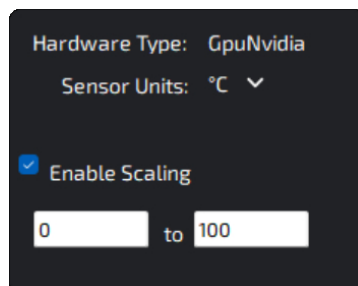
Adjusting Gauge Scaling

Many sensor values such as temperatures and percentages fall between 0 and 100, but some sensor values — like clock speed or fan RPM — can exceed the gauge's default range of 0 to 100. You can customize the scale to match the data you're monitoring, which is helpful when monitoring hardware metrics that have a wide range or when focusing on a specific performance window.

- For high-range values (e.g., clock speeds up to 10,000 MHz), you might use a scale like **0 to 10,000**
- To focus on a specific range — say, **100 to 200** — you can enter those values to “zoom in” on that window, making subtle differences more visible on the gauge

To display these properly, you can enable scaling for each gauge:

- The **scaling toggle** is located to the left of the Hardware selection box.
- Once enabled, the user is able to adjust the **minimum** and **maximum** values for that gauge.
- By default, gauges are scaled from **0 to 100**.



Lumen Dash automatically maps incoming values to a percentage of your chosen scale, ensuring the needle reflects your custom range. For example:

- With a 0–10,000 scale, a value of 5,500 reads 55
- With a 100–200 scale, a value of 180 reads 80

This gives you full control over how the gauges respond — whether you want a full-range overview or a zoomed-in look at fine changes in a narrow band.

System Options Menu

The **System Options** menu allows you to configure global settings that affect how the Lumen Dash behaves across all gauges. These options are accessible via the gear icon in the upper-right corner of the desktop application.

Available Settings

Option	Description
Gauges on Startup	Select the default preset to load on startup or select Most Recent to display the gauges that were last displayed.
Delete Preset	Select a preset from the list to delete it.
Default Temperature Unit	Choose between Celsius and Fahrenheit as the default unit for temperature displays. This setting applies globally, but each gauge can override it individually. To change a specific gauge’s unit, use the drop-down menu above the scaling options in the main layout.
Hide Hardware With No Sensors	With this enabled, hardware with no available sensors is automatically hidden from the available hardware list.

System Tray Menu Functions

When running, the Lumen Dash application appears in the system tray at the bottom-right corner of your screen. This icon confirms the application is active, even when the dashboard is minimized or closed.

Available Options

Option	Description
Open the Dashboard	Double-click the Lumen Dash icon in the system tray to reopen the main dashboard interface. Alternatively, right-click the icon and select Open Dashboard.
Select a Preset	Choose from your presets to instantly apply a different configuration.
Exit the Application	To fully close the application, right-click the tray icon and select Exit. This will disconnect the gauges and power down the device.

Troubleshooting & Support

Common Issues

Follow the steps below to take photographs in live view.

Device Not Powering On	<ul style="list-style-type: none">• Check the App's Connection Status: If it says Connecting/Connected but the unit stays off, see <i>Gauges Not Showing Data</i>.• Check the Power Adapter: Ensure you are using the included 12V power adapter. Substituting another power source may prevent the unit from powering on or cause damage.• Inspect the Cable Connections: Verify the power and USB cables are securely connected. Look for any visible damage to the cables or connectors.• Disconnect Power and USB: Unplug both power and USB cables from the device. Reconnect and try again. Restart the computer if necessary.
Gauges Not Showing Data	<ul style="list-style-type: none">• Confirm the Application is Running: Make sure the application is running in the System Tray and that there is only one instance. Confirm the application connection status is "Connected".• Check Anti-virus Software: Make sure anti-virus software has not blocked any functions of the desktop software.• Disconnect Other Devices: Disconnect other USB devices from the computer and restart the system.
App Not Launching	<ul style="list-style-type: none">• Check Anti-virus Software: Make sure anti-virus software has not prevented the desktop application from opening.• Ensure It's Not Already Running: Check the System Tray to see if the application is already running. Double click the system tray icon to open the main interface. Check the Task Manager to see if the software is already running.• Reinstall the Latest Version: Download and install the latest version of the desktop application from https://lumenlabs.app/download.

Software Updates

The desktop application automatically checks for updates while running. If an update is available, a yellow "!" will appear inside the Settings icon.

Installing an Update

Click on the Settings icon and select the Install Update button to install the update. The application will automatically restart when the update is complete.



Download the Latest Version Anytime

Download and install the latest version of the desktop application from our website at:

<https://lumenlabs.app/download>

Getting Support

For help with your Lumen Dash, visit our website for the latest resources, troubleshooting tips, and setup guides. Most common issues can be resolved through the information available online.

Start here:

<https://lumenlabs.app/support>

Still need help?

If you can't find what you're looking for, use our contact form or reach out via email:

Contact Form:

Fill out the form at lumenlabs.app/support and a representative will get back to you.

Email Support:

Product Support — support@lumenlabs.app

Be sure to include your order number and serial number if available.

Technical Reference

Power Requirements

The Lumen Dash requires a stable 12V DC power supply to operate reliably. Use only the included AC-to-DC power adapter. The power source specifications are listed below:

- Voltage: 12V DC
- Current Draw: 1A max
- Connector Type: 5.5mm x 2.1mm barrel plug, center-positive

Using an unapproved or incorrect power source may result in:

- Inaccurate gauge readings
- Display flickering or shutdowns
- Overheating or permanent hardware damage

△ Important: Powering Lumen Dash from an automotive or variable voltage supply is not supported unless regulated to exactly 12V DC.

To ensure proper function, when connecting the device, always plug in power before connecting to USB.

When disconnecting the device, first disconnect the USB, wait for the gauges to read zero and the device to be turned off, then disconnect the power.

Care and Maintenance

The Lumen Dash requires minimal maintenance. If cleaning is needed, gently wipe with a dry or lightly damp microfiber cloth. Do not use harsh chemicals or expose the unit to moisture.

Inspect power and USB cables regularly for damage. Discontinue use if any parts appear damaged or worn.

Specifications

Lumen Dash

Electrical	
Power Input	12V DC (regulated), 1A minimum
Power Connector	Barrel Jack (5.5mm outer, 2.1mm inner)
USB Interface	Micro USB Type-B (2.0)
Display	
Display Type	Analog-style digital gauges with RGB backlighting
Gauge Illumination	Individually controlled RGB LEDs
Gauge Range	Configurable: 0-100 (default), scalable
Digit Display	3-digit 7-segment numeric indicators
Data & Sensors	
Supported Metrics	Temperature, Clock Speed, Load, Fan RPM, Voltage, etc..
Data Source	Lumen Dash Desktop Client
Sensor Compatibility	Software-based, supports most system sensors via PC
Software and Compatibility	
System Requirements	Windows 10 or later
Software Requirements	Lumen Dash Desktop Client
Installation	Driverless (plug and play)
Physical	
Dimensions	234mm x 80mm x 134mm (W x H x D)
Weight	???g (??.? oz)
Enclosure Material	Injection-molded ABS plastic
Mounting Options	Desktop surface placement
Environmental	
Operating Temp	10°C to 35°C (50°F to 95°F)
Storage Temp	0°C to 40°C (32°F to 104°F)
Humidity	30% to 65% (non-condensing)

Warranty Information

Limited Warranty

Your Lumen Dash device is covered by a 1-year limited warranty from the date of purchase. This warranty covers defects in materials and workmanship under normal use. It does not cover damage resulting from misuse, modification, or unauthorized repair.

To Submit a Warranty Claim:

Visit <https://lumenlabs.app/support> and fill out the support request form. Be sure to include your order number and serial number, if available.

Warranty Exclusions:

- Cosmetic damage or normal wear and tear
- Damage caused by improper installation or use
- Third-party modifications or repairs
- Power supply damage from unsupported adapters

Notices

- No part of this manual may be reproduced, distributed, or transmitted in any form or by any means, including photocopying, recording, or other electronic or mechanical methods, without prior written permission from Lumen Labs, LLC.
- Lumen Labs reserves the right to update or change product specifications, firmware, or software at any time without prior notice.
- While we strive to ensure this manual is accurate and complete, Lumen Labs is not liable for incidental or consequential damages arising from use of this product. If you notice any errors in this manual, please contact us at support@lumendash.com.

Notices for Customers in the U.S.A.

Federal Communications Commission (FCC) Radio Frequency Interference Statement

This equipment has been tested and found to comply with the limits for a Class B digital device, pursuant to Part 15 of the FCC rules. These limits are designed to provide reasonable protection against harmful interference in a residential installation. This equipment generates, uses, and can radiate radio frequency energy and, if not installed and used in accordance with the instructions, may cause harmful interference to radio communications. However, there is no guarantee that interference will not occur in a particular installation. If this equipment does cause harmful interference to radio or television reception, which can be determined by turning the equipment off and on, the user is encouraged to try to correct the interference by one or more of the following measures:

- Reorient or relocate the receiving antenna.
- Increase the separation between the equipment and receiver.
- Connect the equipment into an outlet on a circuit different from that to which the receiver is connected.
- Consult the dealer or an experienced radio/television technician for help.



CAUTIONS

Modifications

The FCC requires the user be notified that any changes or modifications made to this device that are not expressly approved by Lumen Labs, LLC may void the user's authority to operate the equipment.

Interface Cables

Use the interface cables sold or provided by Lumen Labs for your equipment. Using other interface cables may exceed the limits of Class B Part 15 of the FCC rules.

Notice for Customers in the State of California

WARNING: Handling this product may expose you to lead, a chemical known to the State of California to cause birth defects or other reproductive harm. *Wash hands after handling.*

Lumen Labs, LLC
U.S.A.
<https://www.lumenlabs.app>

Notice for Customers in Canada

CAUTION

This Class B digital apparatus complies with Canadian ICES-003.

ATTENTION

Cet appareil numérique de la classe B est conforme à la norme NMB-003 du Canada.

Notices for Customers in Europe

CAUTION

THIS PRODUCT IS MARKED WITH THE WEEE SYMBOL AND MUST BE COLLECTED SEPARATELY FROM HOUSEHOLD WASTE. PLEASE DISPOSE OF ELECTRONIC DEVICES RESPONSIBLY THROUGH APPROPRIATE COLLECTION PROGRAMS.

This symbol indicates that this product is to be collected separately.



The following apply only to users in European countries:

- This product is designated for separate collection at an appropriate collection point. Do not dispose of as household waste.
- For more information, contact the retailer or the local authorities in charge of waste management.

Data Handling

If you choose to dispose of your Lumen Dash device or transfer ownership, no reset of the device is necessary. The settings are stored within the desktop application and remain on your computer.

Lumen Dash does not store any sensitive personal data on the hardware itself.

Licensing

Lumen Dash software and firmware are licensed for use with Lumen Dash products only. Redistribution or modification without written consent is prohibited.

Contact Directory

For inquiries beyond product support, please reach out to the appropriate department below:

Support

support@lumenlabs.app

General Inquiries

info@lumenlabs.app

Press & Media

media@lumenlabs.app

Business & Wholesale

partnerships@lumenlabs.app

If you're unsure where to direct your message, reach out to info@lumenlabs.app and we'll route your request accordingly.



No reproduction in any form of this manual, in whole or in part (except for brief quotation in critical articles or reviews), may be made without written authorization from LUMEN LABS, LLC.



LUMEN LABS, LLC

Printed in ?????