

What
do
your
Dreams
sound
like?

WHY DREAM?

Every Dream Cymbal is hand-made and hand-hammered, painstakingly crafted from fire and base metal to create an individual masterpiece. Each Dream Cymbal and Gong starts out as copper, tin, and other elements to cast the bronze disks. When sufficiently aged, each disk is repeatedly heated and forged by hammer into the shape of a cymbal. After careful tempering, the instruments are again aged until it is time to give them their voice.

Skillful hammering by a dedicated team of smiths results in a raw, dark-coloured cymbal that is battered and scarred from countless precise blows. The final stage is lathing the metal surface. With every pass of the lathe worker's knife, the visual and aural identity of each cymbal is revealed. An instrument with a fine new voice is born of bronze, fire, hammer and knife.

Dream Cymbal founder Andrew Morris began developing cymbals in 2005. Andy spent many of his 25+ years as a professional percussionist getting very intimate with the sounds and instruments of the renowned ensemble NEXUS. This created a bit of an obsession to bring a new palette of sound creations to other drummers everywhere. Over the years the Dream Team has grown to include 5 more in-demand drummers and percussionists, all of whom still work and are constantly LISTENING and obsessed with their SOUND.

"At Dream we are determined to bring our sound obsession to drummers everywhere. We constantly challenge industry norms whether it is our exceptionally friendly sound pricing strategy, our recycling program, our innovative dealer support or the fantastic team of musicians that is our endorsement family, our commitment is to make the experience of exploring and owning a Dream Cymbal one you will never regret."



Andy Morris

WHO IS DREAM?



ANDY MORRIS – President

A professional freelance percussionist in Toronto's music scene, Andy started Dream because of his quest for exciting, musical sounds and instruments. His collection (obsession?) ranges in the hundreds... When not doing Dreamy stuff, he can be found playing gigs and advocating for musicians.



CRAIG SNOWDEN – Head of Canadian Sales, Warehouse Manager, Artist Relations

Craig began playing the drums at age 11 and continued his studies through high school, university and post-graduate programs in Ontario. He regularly performs with symphony orchestras, new music ensembles, choirs and musical theatre throughout the region in a variety of settings.



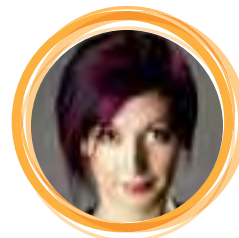
BRIAN LA RUE – Head of US Sales

Brian runs the US Operations for Dream. He grew up working in a pro drum shop and since moving to the MI side has worked with electronic percussion, acoustic drums, and acoustic cymbals extensively. He likes zombies, Quidditch, and hanging out with his kids...not necessarily at the same time.



ED SQUIRES – Social Media and Marketing

Ed Squires is an in demand Orchestral, Chamber and Modern Dance musician based in Toronto, Canada. At Dream he spends his days endlessly creating content, refining the Dream brand, working with advertising partners and helping our amazing customers find their Dream sound through our social media channels!



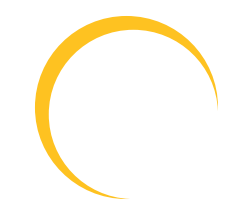
JULIA CLEVELAND – Assistant to the President

Drummer, percussionist, composer and educator, Julia runs her own jazz quintet, directs a Japanese taiko drumming ensemble and freelances with a wide range of musical groups. Julia is the executive assistant keeping the wheels turning around Dream HQ.



RAY DILLARD – Creative Development

Ray brings a great deal of experience in many facets of the world of music to play in every sandbox he finds himself in. Hopelessly exuberant and perpetually curious sums up most of his waking hours. Sound, quite simply, is a key driving force behind most of what Ray has spent the last four decades of his life contemplating and playing with.



HEAD OFFICE:

616R St. Clarens Avenue
Toronto, Ontario M6H 3W9
Sales Tel: 416.588.5532
Fax: 416.900.0376
Toll free: 1 877.933.7629
info@dreamcymbals.com | dreamcymbals.com

Why Dream?	inside cover
Who is Dream?	1
CYMBAL LINES	
Bliss	2-3
Vintage Bliss	4-5
Contact	6-7
Energy	8-9
Dark Matter	10-11
CYMBAL PACKS	
TriHats	12
Ignition	13
EFFECTS	
Recycling & RE-FX	16-17
Sound Effects – Bender Gongs, Finger Cymbals, Lion & Han	18
Pang	19
BAND / ORCHESTRA / MARCHING	
Hand Cymbals – Contact & Energy	20
Orchestral Gongs	21
Crotales	22-23
Tuned Gongs & Bell Plates	24-25
Accessories	26-27
Problem Solved	28-29
Sizing Chart	back cover

Ancient techniques create today's cymbal sound.

Each Bliss cymbal is an individual work of art, painstakingly hand-forged, and hand-hammered.

They have a warmth that seduces at low volume and thunders with a froth of dark undertones at more extreme volumes. These cymbals come alive, shimmering and wobbling as if the mere touch of human hands excites the cymbal and it can't wait to get its voice out there and sing. The undertones are warm, rich, dark with an edge of dragon's breath. Each one is a unique, complex voice that will excite your imagination.

Splashes - 8", 10" and 12"
BSP08, BSP10, BSP12

Crashes - 14", 16" and 17"
BCR14, BCR16, BCR17

Paper Thin - 14"— 20" and 22"
BPT14, BPT15, BPT16, BPT17, BPT18, BPT19, BPT20,
BPT22

Crash Rides - 18", 19", 20" and 22"
BCRRI18, BCRRI19, BCRRI20, BCRRI22

Rides - 20", 22" and 22" Gorilla Ride
BRI20, BRI22, BGORI22

Small Bell Flat Ride 24"
BSBF24

Hi Hats 12", 13", 14" and 15"
BHH12, BHH13, BHH14, BHH15

Jeremy Clemons
says:

“There is no other cymbal or cymbal maker that gives me the satisfaction that I get from playing and hearing Dream Cymbals. Being a drummer, producer, and engineer, it enables me to hear and love the cymbals from more than a behind-the-kit perspective.”



Dream
Cymbals and Gongs

Our very first Bliss prototypes were a unique micro-lathed hand-hammered cymbal with our signature soft edge, low profile bell and gradual taper.

Overnight these exceptional cymbals became collector's items. The demand for this special sound grew to the point we had to release them as their own line: Vintage Bliss.

Their unique shape and weight produce an oceanic wave of complex wash, while maintaining a rich, warm stick sound. Responsive, full-bodied with a rapid decay, these make truly functional crash rides. The crashes are full and punchy supported by just the right amount of wash.

Crash Rides - 17", 18", 19", 20" and 22"
VBCRRI17, VBCRRI18, VBCRRI19, VBCRRI20, VBCRRI22



Photo: Jacob Nifong



Nick Baglio says:
“In a time where so many players have bronze that ring the same tone, Dream answers the call with a refreshing sound that separates and rises above the rest. I knew from the minute I played my first Vintage Bliss, that Dream was where I wanted to be.”



The Contact line combines a traditional sound concept with complex sonic characteristics.

Beautifully bright and bold, the Contact series feature a more traditionally shaped bow and slightly deeper profile with a relatively larger bell. The deep wide lathing gives the stick a lively feel - higher pitched but still rich and warm. These are medium to medium-thin cymbals that come alive very easily. Speaking faster and louder, these plates also have depth and complexity in the undertones and a shimmering wash. Heavy rides are available in this series as well as a 24" Small Bell Flat Ride.

Splashes - 8", 10" and 12"
C-SP08, C-SP10, C-SP12

Crashes - 14", 16" and 17"
C-CR14, C-CR16, C-CR17

Crash Rides - 18", 19", 20" and 22"
C-CRRI18, C-CRRI19, C-CRRI20, C-CRRI22

Rides and Heavy Rides - 20" and 22"
C-RI20, C-RI22, C-RI20H, C-RI22H

Small Bell Flat Ride - 24"
C-SBF24

Hi Hats - 13", 14", 15", 16"
C-HH13, C-HH14, C-HH15, C-HH16

Aubrey Dayle says:
"Dream's Contact series fit my desire for bright cymbals with response and control perfectly!"



Powell Randolph says:
“Dream cymbals have a wide range of dynamics! Even with the lightest touch, these cymbals come to life, yet can also deliver for high volume situations.”



Energy Series: The Name says it all.

A bolt of sonic lightning in each handcrafted cymbal, our Energy line delivers exactly as advertised. These cymbals are explosive. Made with the same care and craftsmanship as all our cymbals and gongs, the Energy series are exceptionally responsive with longer decays and a broader dynamic range. With a signature unfinished bell and considerably heavier weight, they do not sacrifice warmth or tone for volume.

Splashes - 8" and 10"
ESP08
ESP10

Crashes - 16", 17", 18" and 19"
ECR16
ECR17
ECR18
ECR19

Crash Rides - 20", 21" and 22"
ECRRI20
ECRRI21
ECRRI22

Rides - 20", 21" and 22"
ERI20
ERI21
ERI22

Hi Hats - 13", 14", 15" and 16"
EHH13
EHH14
EHH15
EHH16

Livia Ranalli says :
 “I love the friendly approach of Dream Cymbals - both to the environment and their artists. They truly care about what they do, and the passion they put into their work pours out in the unique sound of their cymbals. It really feels like home.”

Dream
 Cymbal/Earth Gong



Eclipse Ride



Crashes - 16" and 18"
 DMECR16, DMECR18

Energy Rides - 20" and 22"
 DMER20, DMER22

Flat Earth Rides - 20" and 22"
 DMFE20, DMFE22

Moon Rides - 20" and 22"
 DMMR20, DMMR22

Eclipse Ride - 21"
 DMECLP21

Hi Hats - 14" and 15"
 DMHH14, DMHH15

Dark Matter Series: Re-imagine what a cymbal is.

Created out of our unrelenting need to explore sound, the Dark Matter line was released in 2010 and quickly sent the industry into a tailspin trying to catch up - Beware of imitations! Dark Matter is created from our proprietary process where the cymbals are fired repeatedly. The extreme stresses from this action create changes to the cymbals on a molecular level, taking months of aging to mature and evolve. These cymbals continue to grow as they are broken in and played upon, becoming part of your own unique musical voice.

Dream offers four styles of Dark Matter: Energy, Flat Earth, Moon and Eclipse.

Dark Matter Energy

Featuring the unique charred finish of the Dark Matter Series, the Dark Matter Energy Crashes explode beautifully and then disappear into the mist. The rides sizzle with a powerful combination of dry gritty undertone and total clarity of definition.

Dark Matter Flat Earth Rides

These are a stunning combination of two signature Dream sounds. The Small Bell Flat and the Dark Matter combine to create a sound that is salty, gritty and dry without losing the life of a fine hand hammered ride. The bells are borrowed from our famous Small Bell Flat Rides with the bow of the cymbal is nearly flat. The Dark Matter re-firing process harnesses the wash and adds a unique layer of complexity to a true dark horse. Can you tame it?

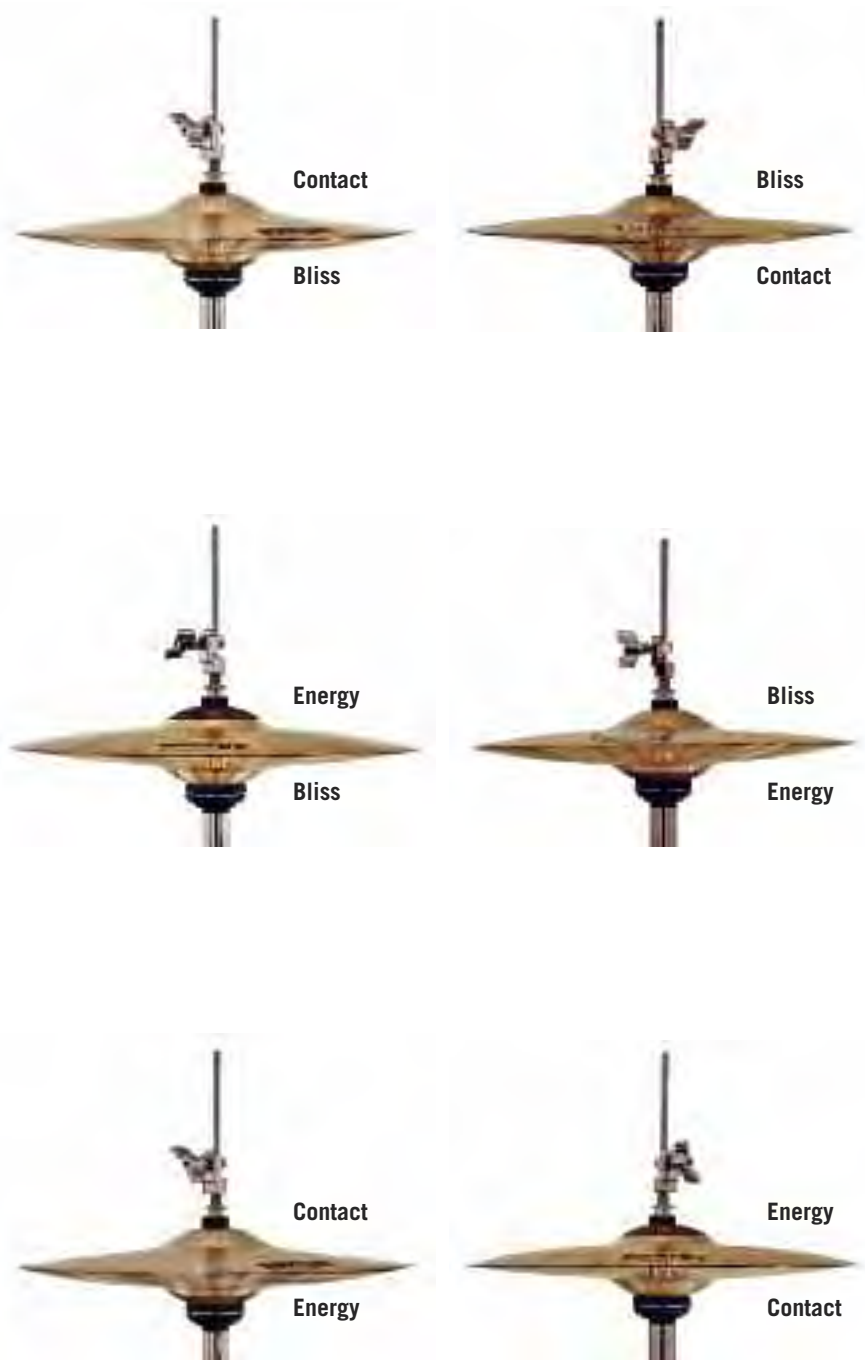
Dark Matter Moon Rides

The granddaddy of the Dark Matter series. These are completely unlathed cymbals. Quite heavy and unapologetic, dry and cutting. Not for the faint of heart.

Dark Matter Eclipse Ride

A unique hybrid of the unlathed Moon Ride center surrounded by a wide swath of warm rich Energy cymbal. This newest addition to the family, the Eclipse Ride provides a dry, articulate center zone with an outer area that has darker undertone and a broad solid wash.

Drummer Math: 1 + 1 + 1 = 6!



At Dream we generally think rules are made to be challenged so we put our heads together and set out to redefine the hi-hat. We have set aside the need to conform to the traditional top hat or bottom hat designation and carefully selected 3 hi-hat cymbals that created the most dynamic mix of hi hat sounds available.

Since any of the three can be a top or bottom, each pack creates 6 sound combinations. By adding an extra clutch, quick changes during a set are a piece of cake.

Each TriHat pack includes a Bliss, Contact and Energy hi hat cymbal, an extra hi hat clutch and a streamlined bag to carry it all in. Even better, suggested retail is just a bit less than the cost of 1 and a half of our regular hats.

Tri Hat Elements Set
TRIHAT14E
Bliss bottom, Contact top, Energy top comes with a bag and extra clutch.

Tri Hat Diversity Set
TRIHAT14D
Bliss top, Contact bottom, Energy bottom comes with a bag and extra clutch.

3 Cymbals
6 Combinations
1 Extra Clutch
1 Streamlined Bag

1 Total Hi Hat Solution

We are committed to the idea that your first cymbals should be great cymbals and, to us, that means cast cymbals for their superior tone and performance.

Ignition Series cymbals are hand hammered from cast bronze discs, making for professional quality cymbals at entry level prices. The 3-piece pack includes 14" Hi-Hats, 16" Crash, 20" Ride and a 20" bag to help protect these instruments for a lifetime of use. The sound is a hybrid of the Bliss and Contact families. *Without a doubt the best way to turn first time drummers into lifetime drummers is to make sure they have the best, professional quality instruments at hand.*



Ignition 3-Piece Pack
IGNCP3
14" Hi Hats, 16" Crash and a 20" Crash Ride. Comes with a 20" nylon cymbal bag.

Ignition 3-Piece Pack Plus- with Super-Sized Crash and Crash Ride!
IGNCP3+
14" Hi Hats, 18" Crash Ride and upgraded 22" Contact Crash Ride. Comes with a 22" nylon cymbal bag.

Ignition 4-Piece Pack
IGNCP4
14" Hi Hats, 16" Thin Crash, 18" Medium Crash and 22" Contact Crash Ride. Comes with a 22" nylon cymbal bag.

Ignition 18" Crash
IGNCR18
Available as an add on to the IGNC3

Louise Bartle says:
"When I play other cymbals they can feel a bit too heavy, but these Dream Cymbals are just perfect, they feel like they've been custom made for me!"





JEAN MARTIN



KRISTEN KLEHR



TIM SHIA



RYAN PEEL



MATT SOBB



NOEL WEBB



ARTHUR VINT



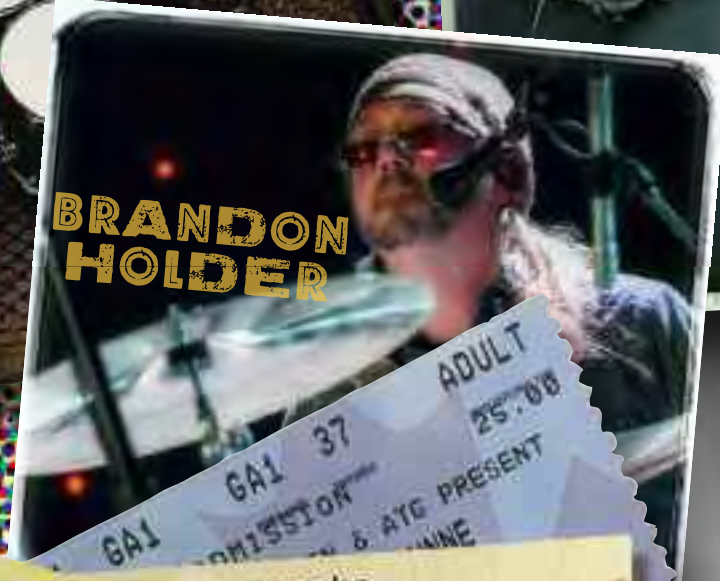
DAVID KEITH



FABIAN EGGER



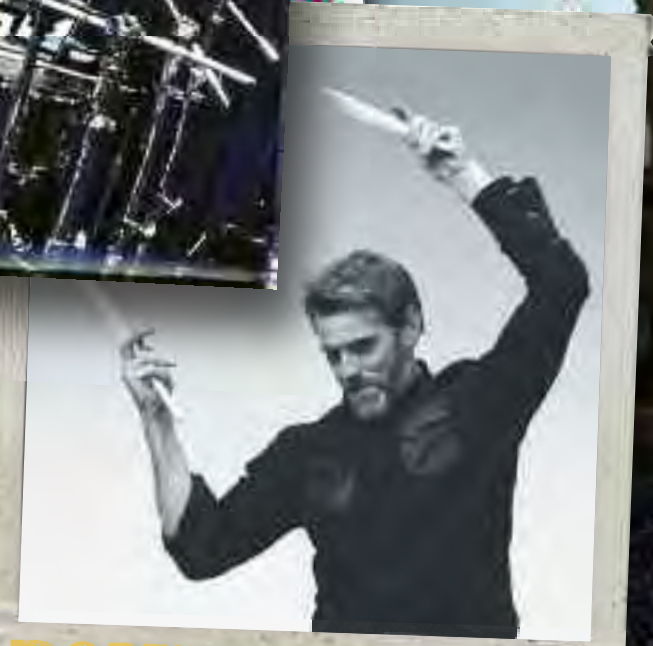
AUSTIN WRINKLE



BRANDON HOLDER



KENT ABERLE



DOMINIC GREENSMITH



DION PARSON



“The Dream Recycling Program stands alone in the industry. It’s not only a way to turn spent cymbals into new DREAM sounds, it’s a way of serving our environment. ‘Cash’ in for new sounds by making a positive impact on the Earth, your finances, and, on your new Dream Cymbal, a very beautiful sounding impact indeed.”

– Andrew Barkau
The Trading Musician Drum Shop, Seattle, WA



At Dream we believe we can make cymbals and contribute to protecting our environment at the same time.

At Dream we believe we can make cymbals and contribute to protecting our environment at the same time. Bring any broken B20 or B8 style cymbal into your nearest Dream Cymbals dealer and receive \$1 per diameter inch in a rebate towards a new Dream cymbal purchased at that store. Dealers pass on the rebate to the customer and call us to collect the broken cymbals. Broken cymbals are re-manufactured into new sounds, castings and effects such as the cool Re-FX series.



SCOTT PELLEGRAM

**14" Scott Pellegrom Crop Circle
REFX-CC14**

Use it on a snare, tom, ride or anywhere to create a whole new sound palette to your playing.

**10" Scott Pellegrom Crop Circle
REFX-CC10**

The smaller 10" version of the crop circle, this can adapt to smaller snares or over your hi hats. Let your imagination guide you.

REFX-Bell

Bells only for a clear bell effect. A must own for percussionists.

REFX-HAN10

Thick bell with a thin edge. A versatile solid bell sound with a bit of tangyness on the edge.

REFX-NC14

The Naughty Saucer, another Scott Pellegrom creation, a double-wide crop circle without jingles, it can hang on your drum or cymbals for an instant stack effect. Toss one in your cymbal bag and get creative.

REFX-CC14



REFX-CC10



REFX-Bell



REFX-HAN10



As a drummer or percussionist, you are always on a quest for new sounds to enrich and define your voice. Our effects cymbals give you a wide range of alternative sound options.



Han Cymbal
HAN10, HAN11, HAN12
With a beefy bell and thin edge, the Han cymbal creates a truly unique sound. Sizes range from 10-12 inches.



Bender Gongs
Tiger (Bend Down) and Jin Ban (Bend Up)
TIGER12, TIGER13, TIGER14,
JINHI, JINMED, JINLO
Pitch bends when struck sharply in the centre. Sizes range from 7 to 14 inches.



Lion/China Series
CH12, CH14, CH16, CH18, CH20, CH22, CH24
Commonly called China cymbals, they have a distinctive sharp bell and turned up edges. Available from 12-24 inches, they can explode with fiery bursts of energy or contribute simmering roars of fire.



Timsha Finger Cymbals
TFC-S, TFC-M, TFC-L, TFC-XL
These clear and weighted finger cymbals are carefully tuned so that each note is slightly out of tune with its partner, the resulting cluster creates a magical shimmer that soars over top of whatever they are played against. Comes in 4 sizes.



Pang Series – Once in a while a new cymbal comes along that is a must-have, and redefines a generation of drummers.

Neither a china, nor a ride nor a swish, the Pang Series combines elements of all of these to create a whole new colour in cymbal sounds. The unique inverted bell, combined with its radical shape, creates an extremely fast crash with a sound palette that is entirely new. Loud, brash, but not strident.

Pang Series - 10", 16", 18" and 20"
PANG10, PANG16, PANG18 and PANG20

Pang Stacker Combo - 10" and 14"
STACK10, STACK14

Developed with extraordinary Boston drummer Libor Hadrava, this product combines a splash and a pang for a unique user customizable stack effect. Comes in 10" and 14" sizes.

Libor Hadrava says:
"All Dream Cymbals have a full, unique and rich soul that allows me to bring to life all my musical ideas, emotions and feelings.



Using their voices I can now truly express myself. Dream Cymbals are sonic Heaven on Earth."



energy
#2 16" HAND CYMBALS

Energy A2E

Full-bodied warm sound. Well balanced harmonics. Easy to execute extremely soft passages. Capable of full Fortissimo, exceptional blend.

Straps included. Deluxe Straps with extra padding available.

	ENERGY A2E	CONTACT A2C
16"	●	●
17"	●	
18"	●	●
19"	●	
20"	●	●
21"	●	
22"	●	●

Contact A2C

Brighter timbre and higher pitch centre. Cuts over top of orchestra sound. Glassy softs and shattering fortes.

contact
#2 16" HAND CYMBALS

Feng Gong

Available from 6" to 60"+ and each comes with a mallet. Stand sold separately.

Gordon Stout says:
"Dream Cymbals are the only cymbals I actually enjoy playing. The orchestral crash and suspended cymbals have the most even spread of overtones. They are easy to play and feel very natural. Dream Cymbals and Gongs possess many unique and fascinating qualities of sound for a reasonable cost."

Chau Gong

Available from 6" to 60"+ and each comes with a mallet. Stand sold separately.

Dream
Cymbals and Gongs
28"



Bigger, brighter, beautifully in tune, the Dream Crotales set the bar for what crotales can and should be.

Cast in the USA from melted cymbals acquired from our recycling program, this instrument is finished and assembled in Canada. These crotales are the realization of a dream born from years of frustration with available products. They are significantly heavier and larger in diameter than any other crotales on the market, providing a larger dynamic range, longer sustain, purer sound, impeccable tuning, done by master tuner Warren Hyer, and a durability that will take them from the orchestra stage to the field. This is the crotales sound you have been searching for.

While we offer our octaves in the standard C5-C7 range, we also sell individual notes and stock extended range notes down to A4 - including the two extra pitches required for Toru Takemitsu's classic "Rain Tree" for percussion trio.



Standard Frame

Each octave comes mounted on a standard frame, ready to play. Our exclusive anti-rotation technology prevents the crotales from spinning while being bowed.



Hyer Stand

The Hyer Stand holds both octaves on a lightweight, yet sturdy rolling stand. Its innovative adjustable sliding rails allow the performer to bow between the octaves and move the position of any note. Perfect for school, university or orchestra settings. The Hyer Stand is a separate add on.

Tuned MBao Gongs are an exclusive Dream design, made to meet the call for tuned nipple-gongs around the world.

Available from C2 to C6, a four octave range, they are carefully tuned and selected for balance, sustain and blend. A focused pitch and energetic volumes are their hallmark. Currently in use from New York to Los Angeles, Amsterdam to Toronto. Your search for reliable tuned gongs ends here. Lifetime tuning warranty included.

Dan Savell of L.A. Percussion Rentals says:
“We have used Dream Cymbals’ tuned gongs for countless touring orchestras, percussionists, and music festivals for several years now. They’re just what we need to service our most discriminating clients and their demanding repertoire.”



Tuned Bell Plates

Dream is proud to offer their tuned bell plates in a 4 octave range from C1-C5. Years of research and development have gone into creating wonderfully expressive bell sounds from flat plates. Carefully tuned, they are exceptionally durable and can be played with a range of beaters from soft to extremely hard. The largest are close to 24" x 36" and the smallest less

than 6" x 9". They come with a simple but ingenious cord mount that keeps the cord off the face of the instrument while allowing maximum mounting and transport flexibility. Used in major symphony orchestras across Canada, they are now available worldwide. Custom gong stands are also available for mounting in virtually any configuration.

Made in Canada.

- Material:** Aluminum Plate alloy
- Range:** C1- C5 or 4 complete octaves.
- Tuning:** A=440. Others available on request.
- Mounting:** Cord mounted from 2 points.



TorQ says:
“In the world of contemporary percussion, composers are constantly challenging TorQ to bring new and exotic sounds to the concert stage. Dream Cymbals and Gongs are able to exceed these challenges by providing superior tuned gongs that ring true to their pitch.”



Dream T-Shirts

Wear your Dreams! Made from top grade cotton and manufactured in North America, they come in men's and women's styles in a variety of colours.

**Gong Stand
GSTAND**

Finally, a production gong stand that is light, extremely sturdy, doesn't rattle, sets up in a snap and has an available bag. Did we mention it is an exceptional value and capable of integrating with any standard round drum rack hardware. Standard size will fit up to a 36" gong. Other sizes by special order. Comes with a 2 year warranty.

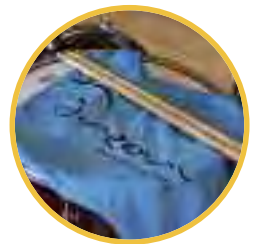


**Hardware Bag
BAGHW**

Technically a Gong stand bag, this durable nylon bag is about 40 inches long and 6 inches square and is therefore perfect for a few pieces of hardware, rainsticks, logdrums, posters, baroque timpani stands or anything that you think of. Extremely versatile and great value.

**Simple Cymbal Bag
BAG20S, 22S, BAG24S**

Simple straightforward cymbal bags with a shoulder strap or extendable handles. These are designed for 4-6 cymbals and quick, efficient use. The 24 inch bag will hold the famous small bell flat 24" cymbals in our Bliss and Contact series.



**Sticks 5A
STKS5A**

5A size, branded stick. Made from maple and features a ball tip.

**Deluxe Cymbal Bag
BAG22D**

The deluxe Dream cymbal bag is for serious players. Featuring a rubber bottom, multiple dividers and an outboard hi hat small cymbal pocket. Sturdy handles and back pack straps mean this can meet your most rugged needs.



**Simple Stick Bag
BAGSTICK2**

A simple economical stick bag. Nylon construction and durable zippers.



**Deluxe Stick Bag
BAGSTICKD**

This large stick bag has lots of room for the percussionist or drummer. Includes durable handles, elasticated cord for mounting on your floor tom and two large pockets big enough for sheet music.





The Caballeros Drum and Bugle Corps says:

“The 2016 Caballeros Percussion section was able to create a sound pallet never heard in the drum corps activity before.

The sounds we were able to create using Dream Cymbals made us unique. The dark sound of the Bliss series and the more aggressive sound of the Energy series allowed us to create back and forth musical conversations just with the use of our cymbal timbres.

We supplemented this with effectual sounds from Dark Matter cymbals and various splashes, bells and stacks.

The china cymbals gave us an edgy hiss and crash that cut like a knife through the soundscape, and the sound quality of the gongs and crotales is unparalleled. Dream Cymbals are a drum corps’ dream come true!”

Band Directors, Music Teachers, Orchestra Conductors!

We understand how frustrating it can be to try to find the professional quality, exceptionally musical sounds that you need at a price that fits into your budget.

Everyone at Dream is a working musician so we understand the challenges from our personal experience. In fact, we vowed never to create low-cost products that sound like low-cost products.

From trading in your old broken cymbals through our recycling program, putting together custom tuned gong sets, or creating a specific cymbal set up that we know will work with your ensemble, we love the challenge of creating custom solutions.

Visit dreamcymbals.com/problemsolved and get your personal cymbal assistant. By bringing together our network of exceptional dealers and our in-house customer service team, we can provide a custom solution tailored to your needs, for free.

Reach out today at www.dreamcymbals.com/problemsolved

Escape Ten Percussion Duo Andrea Venet & Annie Stevens say:
“Dream M-Bao gongs and Crotales have a full, clear, luscious sound that we love. Integrating these instruments into our creative musical projects is exciting for us and the composers we work with.

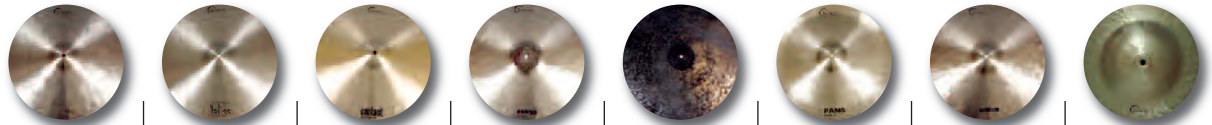
Another plus – the Dream products appear very chic on stage!”



SIZING CHART

DREAM 2017

30



BLISS

VINTAGE
BLISS

CONTACT

ENERGY

DARK
MATTER

PANG

IGNITION

CHINA

8 splash	●		●	●				
10 splash	●		●	●		●		
12 splash	●		●					●
14 crash	●		●					●
16 crash	●		●	●	●	●	●	●
17 crash	●		●	●				
18 crash				●	●	●	●	●
19 crash				●				
20 crash						●		●
22 crash						●		●
24 crash								●
28 crash								●
17 crash-ride		●						
18 crash-ride	●	●	●					
19 crash-ride	●	●	●					
20 crash-ride	●	●	●	●			●	
21 crash-ride				●				
22 crash-ride	●	●	●	●			●	
14 paper-thin	●							
15 paper-thin	●							
16 paper-thin	●							
17 paper-thin	●							
18 paper-thin	●							
19 paper-thin	●							
20 paper-thin	●							
21 paper-thin	●							
22 paper-thin	●							
20 ride	●		●	●	●			
21 ride				●				
22 ride	●		●	●	●			
20 heavy ride			●					
22 heavy ride			●					
22 gorilla ride	●							
20 flat earth ride					●			
22 flat earth ride					●			
21 eclipse ride					●			
20 moon ride					●			
22 moon ride					●			
24 small bell flat ride	●		●					
12 hi hat	●							
13 hi hat	●		●	●				
14 hi hat	●		●	●	●		●	
15 hi hat	●		●	●	●			
16 hi hat			●	●				