



**DRUMS**  
**AND**  
**HARDWARE**  
**A**  
**SOUND**  
**CHOICE**

# Dixon Conviction

Dixon Drums is a full-line acoustic drum and hardware brand with over 35 years of manufacturing experience. Committed to quality and innovation, we embrace both sound and function to advance the art of drumming through the craft of fine drum making.

A drummer-centric approach is at the core of everything we do, resonating throughout each one of our product lines. We have established a reputation for durability and reliability, while remaining nimble enough to respond to industry trends and player needs quickly and creatively.

In this catalog, you will see a dynamic blend of time-tested, industry-standard configurations mixed with innovations in shell materials, cutting-edge hardware designs, and world-class signature artist models. Our ability to serve all styles of music (ranging from Jazz to Metal), deliver at all levels of playing (beginner to pro), and offer full customization of each aspect of the instrument (see our flagship Artisan Series), has made Dixon a rising star in today's drum market.

Join the Dixon family, and be a part of drum history in the making.



# Committed to Quality Driven by Sound

06 / ARTISAN Series

18 / BLAZE Series

20 / FUSE Series

22 / SPARK Series

24 / JET SET Series

26 / SNARE Drums

36 / HARDWARE

53 / INVENTOR Series



# ARTISAN

## Features

Dixon understands that every drummer reaches a point when it all comes together and refined skills culminate in optimum results. We refer to this achievement as ARTISAN. Our flagship series delivers the very best our craftsmen have to offer, along with choices to personalize your instrument. ARTISAN delivers the creative control necessary to capture your signature look and sound.



1 A wide variety of lacquer finishes to choose from



2 Our uniquely-shaped A-Frame brackets give Artisan drums an added dimension of sophistication and character that complement any finish



3 Fully-adjustable single ball and L-Rod tom adaptors put your toms wherever you need them to be



4 V-Mount suspension provides combination of stability and shell resonance



5 Die-cast hoops for a consistent, focused sound that will last



6 Dixon's 45-degree bearing edge establishes a precise point-of-contact with the top and bottom drum heads, providing an unrestricted transfer of vibration from stick, to head, to shell



7 Evans USA Level 360 G2 batter and Evans USA Level 360 G1 resonant heads



8 18" bass drum comes with bass drum lift

# Choose your **Look & Sound**

STEP 1 Shell Construction

STEP 2 Shell Finish

STEP 3 Hardware Color



STEP

1

## Shell Construction

Artisan Series drum shells are made from hand-selected, grade "A" hardwoods. Each ply is cut to exact specifications and laminated using our exclusive high pressure molding process. Dixon's master drum makers have spent years refining the traditional shell-making method to ensure that every Artisan drum delivers optimum tuning range and tone.

### Artisan Maple

- 7-ply North American maple
- Shell thickness: 6.2mm TT and FT / 7.4mm SD and BD
- Bearing edge: 45 degrees
- Toms, floor toms and snare drums equipped with die-cast hoops

Dixon knows quality maple drums are the benchmark of great drum brands. So in order to earn the Artisan badge, our 100% maple series couldn't be anything less than a superior instrument. The result is our 7-ply North American maple shell which exceeds the industry standard and delivers that familiar warmth and control of classic maple drums to stages and studios across the globe.



### Artisan Limited

- Exotic hardwood options and limited production runs
- Bearing edge: 45 degrees
- Toms, floor toms and snare drums equipped with die-cast hoops

Dixon Artisan Limited was established to encourage innovation and the advancement of the art of shell making. Artisan Limited challenges our craftsmen on a daily basis through special orders and the special purchase of limited hardwoods to combine design, resources and craftsmanship to produce some of the finest drum outfits the drum world has seen and heard.



### Artisan Maple / Bubinga

- 8-ply hybrid shell: 2-ply North American maple, 6-ply African bubinga
- Shell thickness: 6.4mm TT and FT / 7.2mm SD and BD
- Bearing edge: 45 degrees
- Toms, floor toms and snare drums equipped with die-cast hoops

To offer an exciting alternative to the traditional maple sound, Dixon craftsmen combine the best of two worlds to create the ultimate hybrid drum shell; the result is our 8-ply bubinga / maple shell, a special blend of 6-ply African bubinga and 2-ply North American maple. The bubinga / maple effect is a darker fundamental with a surprising increase in projection, providing endless possibilities for today's innovative drummer.

### Artisan Limited Ultra Maple

- Ultra-thin North American maple
- Shell thickness: 4mm all drums w/o reinforcement ring. Bass drums ordered w/ mounted tom holder equipped w/ 4.8mm reinforcement rings.
- Bearing edge: 45 degrees
- Toms, floor toms and snare drums equipped with 2.3mm triple flanged hoops

Inspired by world-class drummer Gregg Bissonette's passion for maple drums and his quest for a big live sound, Ultra Maple combines the legendary warmth of maple with the projection of thin shell construction. In Gregg's own words, the Artisan Limited Ultra Maple sound is "full, beefy, cutting, stylistically versatile and most of all - AWESOME!"

STEP 2

# Shell Finish

See page 54 for full selection.



Matrix Green (MXG)



Matrix Gold (MXGD)



Matrix Copper (MXC)



Matrix Red (MXR)



Star Dust Gray (SDG)



Star Dust Black (SDB)



Star Dust Blue (SDBL)



Star Dust Red (SDR)



\*Division Piano Black (DVPB)



\*Division Retro Yellow (DVRV)



\*Division Snow White (DVSW)



\*Division Ocean Blue (DVOB)

\*Division finishes consist of half satin shell / satin hardware (batter) and half gloss shell / chrome hardware (resonant).

STEP 3

# Hardware Color



Chrome



Black Chrome



Satin Chrome



ARTISAN MAPLE /  
BUBINGA  
Chrome Hardware  
Blue Lagoon (BLG)

AM-418-01-BLG-CR

Bass Drum 16 X 18"

Tom Tom 8 X 12"

Floor Tom 14 X 14"

Snare Drum 5.5 X 14"

ARTISAN LIMITED ULTRA  
MAPLE  
Chrome Hardware  
Lucite Green Stripe (LGS)

AS-622-07-LGS-CR

Bass Drum 18 X 22"

Tom Tom 8 X 10"

Tom Tom 10 X 12"

Floor Tom 12 X 14"

Floor Tom 14 X 16"

Snare Drum 6.5 X 14"





**ARTISAN LIMITED**  
 American Red Gum  
 Over Maple  
 Chrome Hardware  
 Satin Natural (SN)

AS-522-03-ARG-SN-CR

Bass Drum 18 X 22"

Tom Tom 8 X 10"

Tom Tom 9 X 12"

Floor Tom 14 X 16"

Snare Drum 5.5 X 14"

**ARTISAN LIMITED**  
 100% Tamo Ash  
 Chrome Hardware  
 Mystic River (MRB)

AS-522-07-MRB-CR

Bass Drum 18 X 22"

Tom Tom 9 X 10"

Tom Tom 10 X 12"

Floor Tom 12 X 14"

Snare Drum 7 X 13"

Also available in :



Mystic Crimson (MRR) Mystic Jade (MRG)

Available only on 100% tamo ash





ARTISAN LIMITED ULTRA MAPLE

## Gregg Bissonette's Tour Kit

In Gregg's Signature Sea Foam Green Sparkle  
Finish with Chrome Hardware

AS-424-02-GR2-CR

Bass Drum 18 X 24"

Tom Tom 10 X 12"

Floor Tom 16 X 16"

Snare Drum 6.5 X 14"



Gregg Bissonette

Ringo Starr and His All-Starr Band





# BLAZE

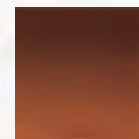


Satin See-Through Red Burst (SSTRB)

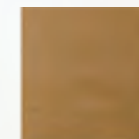
Dixon believes there is nothing more satisfying than expecting more from something and actually getting it! For drummers, the BLAZE series is an example of just such a thing - more of what a professional expects from an instrument with a price tag that is lower than most sets in its class. BLAZE is crafted from North American maple and red silkwood for a solid sonic foundation that can then be infinitely shaped and shaded by the multitude of drumhead options available today.

- 7-ply hybrid shell ( 2-ply North American maple + 5-ply red silkwood )
- Quality parts and metal plating
- Fully adjustable single ball & L-Rod tom adaptors
- New vibra-hoop suspension
- Low-mass lugs
- Optional Evans USA Level 360 G2 batter heads
- Optional hardware and cymbals

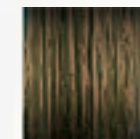
#### Finishes:



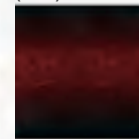
Antique Amber Fade (AAF)



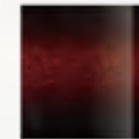
Natural (N)



Green Forest (GF)



Satin See-Through Red Burst (SSTRB)



See-Through Red Burst (STRB)



Emerald Fade (EF)



Metallic Blue (MTB)



Metallic Blue (MTB)

#### BZ-522

|            |           |
|------------|-----------|
| Bass Drum  | 18 X 22"  |
| Tom Tom    | 8 X 10"   |
| Tom Tom    | 9 X 12"   |
| Floor Tom  | 14 X 16"  |
| Snare Drum | 6.5 X 14" |

Green Forest (GF)  
Special Edition

#### BZ-520

|            |           |
|------------|-----------|
| Bass Drum  | 18 X 20"  |
| Tom Tom    | 8 X 10"   |
| Tom Tom    | 9 X 12"   |
| Floor Tom  | 13 X 14"  |
| Snare Drum | 5.5 X 14" |



# FUSE

As drummers, Dixon appreciates how you prepare and the expectations you're under to develop an image and find your sound. So, we developed the FUSE series to outfit drummers of all styles and levels with high-end features inside and out at a working musician's price point. FUSE are performance-class drums for the ambitious first time buyer, upgrade candidate, or performer in need of one more kit. Available in two shell profiles: maple and cherry

- 6-ply hybrid shell ( 3-ply maple or cherry + 3-ply mahogany )
- Various high-quality drum finishes with gloss chrome / satin silver hardware
- Ball & L-Rod tom holder
- Low-mass lugs
- Optional hardware and cymbals



Green Ice Fade (GIF)

Finishes:



Amber (AM) Brown Burst (BB) Black Burst (BKB) Gloss Candy Red Fade (CRF) Natural Black Fade (NBF) Green Ice Fade (GIF)

## Profile Maple

A traditional shell and finish combination for a conventional look and sound. On the inside, Profile Maple's 6-ply shell combines both maple and mahogany hardwoods for a warm, controlled sound with a mid-to-low fundamental and great versatility, while the outside features stunning gloss finishes applied by hand; highlighted by chrome lugs, brackets, mounts and hoops.

## Profile Cherry

A contemporary shell and finish combination for a progressive look and sound. On the inside, Profile Cherry's 6-ply shell combines both cherry and mahogany hardwoods for a full, punchy sound with a mid-fundamental and great projection, while the outside features rich satin finishes applied by hand; highlighted by satin silver lugs, brackets, mounts and hoops.

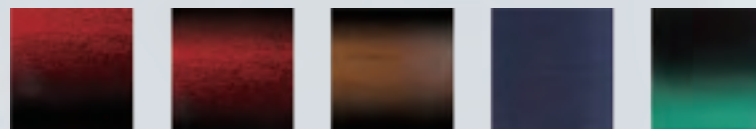


Satin Midnight Blue (SMB)



Sea Foam Green Sparkle (SFG)

Finishes:



Satin Candy Red Fade (SCRF) Satin Candy Red Burst (SCRB) Satin Natural Cherry to Black Burst (SBB) Satin Midnight Blue (SMB) Satin Green Ice Fade (SGIF)

FS-418

Bass Drum 16 X 18"  
Tom Tom 9 X 12"  
Floor Tom 13 X 14"  
Snare Drum 5.5 X 14"

FS-520

Bass Drum 18 X 20"  
Tom Tom 8 X 10"  
Tom Tom 9 X 12"  
Floor Tom 13 X 14"  
Snare Drum 5.5 X 14"

FS-522

Bass Drum 18 X 22"  
Tom Tom 8 X 10"  
Tom Tom 9 X 12"  
Floor Tom 14 X 16"  
Snare Drum 6.5 X 14"



Inspired by Gregg Bissonette's Tour Configuration

FS424AMCRSFG

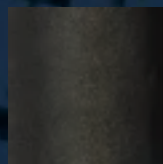
Bass Drum 18 X 24"  
Tom Tom 10 X 12"  
Floor Tom 16 X 16"  
Snare Drum 6.5 X 14"

- FUSE Profile Maple and Profile Cherry are available in the above configurations.



Misty Black (MBK)

## Colors:



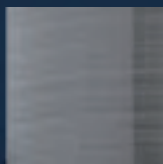
Misty Black (MBK)



Cyclone Blue (CBL)



Cyclone Red (CRD)



Cyclone Silver (CSV)

For most drummers, the inspiration to play drums originates from the sights and sounds of a live performance while visualizing yourself on stage, in the drivers set with the audience at your feet. No matter when this inspiration hits you, we want you to look great, sound awesome and feel like a pro. Dixon SPARK delivers the features that ignite all three. SPARK are starter-class drums designed for the first-time drum set buyer searching for a complete outfit and the basic gear to perform. Quality components and a choice of four unique finishes make SPARK a sound choice.

- 6-ply poplar shell
- Medium, double-braced hardware
- Pro-style bass drum spurs
- Deluxe throne
- Ball & L-Rod tom holder
- Deluxe brass cymbal set
- 14" hi-hats, 16" crash and 18" crash/ride

## SK-520

|            |           |
|------------|-----------|
| Bass Drum  | 16 X 20"  |
| Tom Tom    | 8 X 10"   |
| Tom Tom    | 9 X 12"   |
| Floor Tom  | 14 X 14"  |
| Snare Drum | 5.5 X 14" |

## SK-522

|            |           |
|------------|-----------|
| Bass Drum  | 16 X 22"  |
| Tom Tom    | 9 X 12"   |
| Tom Tom    | 10 X 13"  |
| Floor Tom  | 16 X 16"  |
| Snare Drum | 5.5 X 14" |

## SK-522R

|            |           |
|------------|-----------|
| Bass Drum  | 16 X 22"  |
| Tom Tom    | 8 X 10"   |
| Tom Tom    | 9 X 12"   |
| Floor Tom  | 14 X 14"  |
| Snare Drum | 5.5 X 14" |

## SK-522E

|            |           |
|------------|-----------|
| Bass Drum  | 16 X 22"  |
| Tom Tom    | 8 X 10"   |
| Tom Tom    | 9 X 12"   |
| Floor Tom  | 16 X 16"  |
| Snare Drum | 5.5 X 14" |

# SPARK



Cyclone Blue (CBL)

# Jet Set

Jet Set is Dixon's compact drum set solution for tight conditions and travel limitations. Small enough for a child but strong enough for an adult, Jet Set serves a variety of needs when standard configurations are just too much. All of Jet Set's drums mount from the 16" bass drum supported by two pair of spurs, providing a solid set up, slight lift and small footprint.

- 6-ply / 6.2mm poplar shell
- Single-headed toms
- Fully-adjustable mounted double tom holder, snare drum holder and floor tom holder
- Optional hardware and cymbals
- Optional rolling bag (PCB-DK)



PCB-DK  
Including:  
Drumset rolling bag (L:84 x W:43 x H: 44 cm)  
Hardware carrying bag (L:94 x W:16 x H: 16 cm)

Colors:



Black (BK)

Dark Blue (DB)

Gun Metal (GM)

Wine Red (WR)

White (WT)



Wine Red (WR)

**JSP-516**

Bass Drum 12 X 16"

Tom Tom 6 X 8"

Tom Tom 6 X 10"

Floor Tom 7 X 12"

Snare Drum 4.5 X 12"

# Jet Set Plus

Dixon Jet Set Plus is the ultimate all-in-one travel drum kit. Sitting or standing, for gigging or quiet practice, this latest Dixon innovation adapts to all styles, stages and applications. Simply reconfigure Jet Set Plus to play as a conventional or cocktail set-up and then choose from the plastic batter side of each drum to play at full volume or the mesh resonant side for little-to-no sound. Quality construction, unique colors and extreme versatility will surely make Jet Set Plus your new go-to drum kit.

- 9-ply mahogany shell
- Mesh drumhead on resonant side
- Fully-adjustable mounted double tom holder, snare drum holder and floor tom holder
- 3 drum kits in 1: a stand-up cocktail kit, a silent practice kit and an acoustic kit
- Optional hardware and cymbals
- Optional rolling bag (PCB-DK)



Orange Sparkle (OS)


**JSP-516**

Bass Drum 12 X 16"

Tom Tom 6 X 8"

Tom Tom 6 X 10"

Floor Tom 10 X 12"

Snare Drum 4.5 X 12"

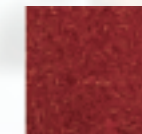
Colors:



Deep Blue Sparkle (DBS)



Orange Sparkle (OS)



Red Sparkle (RS)



# SNARE DRUMS

Our snare drum collection features both remarkable construction and state-of-the-art design. Each drum is crafted with a particular sound, style and character in mind.

## SIGNATURE



*Gregg Bissonette*

**Gregg Bissonette**  
Ringo Starr and his all-star band



**SG654UT-GB1-CR**

Steel Shell

|              |                             |
|--------------|-----------------------------|
| Parts        | Chrome                      |
| Material     | Steel shell                 |
| Shell Finish | Black nickel                |
| Hoops        | Triple flanged              |
| Heads        | Remo UT                     |
| Size         | 6.5 x 14"                   |
|              | • Adjustable snare butt-end |



**SG654CS-GB-CR**

Hammered Brass Shell

|              |                             |
|--------------|-----------------------------|
| Parts        | Chrome                      |
| Material     | Hammered brass shell        |
| Shell Finish | Black nickel                |
| Hoops        | Triple flanged              |
| Heads        | Remo USA                    |
| Size         | 6.5 x 14"                   |
|              | • Adjustable snare butt-end |



**SG604UT-MG-CR**

Zebra / North American Maple

|              |                              |
|--------------|------------------------------|
| Parts        | Chrome                       |
| Material     | Zebra / North American maple |
| Shell Finish | Natural gloss                |
| Hoops        | Die-cast                     |
| Heads        | Remo UT                      |
| Size         | 6 x 14"                      |



*Mel Gaynor*

**Mel Gaynor**  
Simple minds

# ARTISAN Chris Brady



As with Dixon's Artisan series drum sets, our Artisan snares use a host of finely-selected woods that produce a dynamic range of sound options to choose from, and all the standard metal shell materials that drummers require are also represented in the Artisan line, as well. Additionally, our passionate drum designers develop creative, non-traditional combinations of materials, such as those in Equator.

Our snares are tested daily to meet exacting standards of factory quality, and our dedicated studio staff frequently record and analyze the sound of each model to ensure the integrity of our designs. Each design is field-tested by professional drummers and modified according to their valuable feedback before it is introduced onto the market. These steps are just another part of Dixon's dedication to quality and innovation.



Brady Drums, Founder



## Designed by Chris Brady

Iconic drum builder Chris Brady has partnered with Dixon to produce a very special Australian rose gum snare drum in different sizes. Rose gum is harder than most exotic woods for a more pronounced woody tone. Each snare delivers outstanding acoustical properties which go beyond traditional maple and birch shells.

- 9-ply Australian rose gum
- Chrome parts
- Evans G1 coated / Evans SS clear heads
- Dunnett throw-off



① 9603CBRG 6 X 13"  
Reverse vintage burst

② 9554CBRG 5.5 X 14"  
Natural

③ 9654CBRG 6.5 X 14"  
Vintage burst

Zinc die-cast hoops



9554CBRG-S-WDH 5.5 X 14"  
Satin natural  
Vintage maple hoops



9603CBRG-WDH 6 X 13"  
Reverse vintage burst  
Maple hoops



9554CBRG-STH 5.5 X 14"  
Natural  
Triple flanged hoops



9502CBRG-STH 5 X 12"  
Reverse vintage burst  
Triple flanged hoops



9654CBRG-WDH 6.5 X 14"  
Vintage burst  
Maple hoops

# ARTISAN Wood



AR454NMDW

**N. American Maple + Maple Reinforcement Ring**

|              |   |
|--------------|---|
| Parts        | Chrome  |
| Material     | 10-ply N. American maple + 4-ply maple reinforcement ring |
| Shell Finish | Dark walnut   |
| Hoops        | Triple flanged  |
| Heads        | Evans G1 coated / Evans SS clear                          |
| Size         | 4.5 X 14"   |



AR512N

**N. America Maple + Cordia**

|              |  |
|--------------|--|
| Parts        | Chrome   |
| Material     | 5-ply N. America maple + 3-ply cordia outer veneer |
| Shell Finish | Natural  |
| Hoops        | Zinc die-cast                                      |
| Heads        | Evans G1 coated / Evans G1 clear                   |
| Size         | 5 X 12"  |



AR554-BLOCK-02

**Maple Block**

|              |                                       |
|--------------|---------------------------------------|
| Parts        | Chrome                                |
| Material     | 15mm North American maple block shell |
| Shell Finish | Satin natural                         |
| Hoops        | Triple flanged                        |
| Heads        | Evans G1 coated / Evans SS clear      |
| Size         | 5.5 X 14"                             |



AR554BSSZ

**Beech + Zebrawood**

|              |   |
|--------------|---|
| Parts        | Chrome                                  |
| Material     | Beech + zebrawood, 20mm shell thickness |
| Shell Finish | Semi-satin natural                      |
| Hoops        | Triple flanged                          |
| Heads        | Evans G1 coated / Evans SS clear        |
| Size         | 5.5 X 14"                               |



AR554BSSZ1-WDH

**Zebrawood + Beech + Zebrawood**

|              |   |
|--------------|---|
| Parts        | Chrome  |
| Material     | Zebrawood + beech + zebrawood, 20mm shell thickness |
| Shell Finish | Semi-satin natural                                  |
| Hoops        | Maple   |
| Heads        | Evans G1 coated / Evans SS clear                    |
| Size         | 5.5 X 14"   |



AR653BSSZ1-WDH / AR754BSSZ1-WDH

**Zebrawood + Beech + Zebrawood**

|              |   |
|--------------|---|
| Parts        | Chrome  |
| Material     | Zebrawood + beech + zebrawood, 20mm shell thickness |
| Shell Finish | Semi-satin natural                                  |
| Hoops        | Maple   |
| Heads        | Evans G1 coated / Evans SS clear                    |
| Size         | 6.5 X 13" / 7.5 X 14"                               |



AR754CPSSM-WDH

**Maple + Camphor**

|              |                                       |
|--------------|---------------------------------------|
| Parts        | Chrome                                |
| Material     | Maple + camphor, 20mm shell thickness |
| Shell Finish | Semi-satin natural                    |
| Hoops        | Maple                                 |
| Heads        | Evans G1 coated / Evans SS clear      |
| Size         | 7.5 X 14"                             |



AR653MBSSB-WDH

**Beech + Maple Burl**

|              |  |
|--------------|--|
| Parts        | Chrome                                   |
| Material     | Beech + maple burl, 13mm shell thickness |
| Shell Finish | Semi-satin natural                       |
| Hoops        | Maple                                    |
| Heads        | Evans G1 coated / Evans SS clear         |
| Size         | 6.5 X 13"                                |



AR654BSSBE

**Beech + Birds Eye Maple**

|              |  |
|--------------|--|
| Parts        | Chrome                                       |
| Material     | Beech + birdseye maple, 20mm shell thickness |
| Shell Finish | Semi satin natural                           |
| Hoops        | Triple flanged                               |
| Heads        | Evans G1 coated / Evans SS clear             |
| Size         | 6.5 X 14"                                    |



AR613RW-WDH

**Rosewood**

|              |                                  |
|--------------|----------------------------------|
| Parts        | Chrome                           |
| Material     | 9-ply rosewood                   |
| Shell Finish | Natural                          |
| Hoops        | Maple                            |
| Heads        | Evans G1 coated / Evans SS clear |
| Size         | 6 X 13"                          |



AR613RW-BG

**Rosewood**

|              |                                  |
|--------------|----------------------------------|
| Parts        | Chrome                           |
| Material     | 9-ply rosewood                   |
| Shell Finish | Natural                          |
| Hoops        | Triple flanged                   |
| Heads        | Evans G1 coated / Evans SS clear |
| Size         | 6 X 13"                          |

- Dunnett throw-off & butt plate
- Padded bag included



AR713TARBS

**Tamo Ash Wood**

|              |                                  |
|--------------|----------------------------------|
| Parts        | Chrome                           |
| Material     | Tamo ash wood                    |
| Shell Finish | Black reverse grain              |
| Hoops        | Triple flanged                   |
| Heads        | Evans G1 coated / Evans SS clear |
| Size         | 7 X 13"                          |



# ARTISAN Metal

# EQUATOR



9554PST / 9654PST

### Steel

|              |                                  |
|--------------|----------------------------------|
| Parts        | Chrome                           |
| Material     | Steel                            |
| Shell Finish | Chrome                           |
| Hoops        | Triple flanged                   |
| Heads        | Evans G1 coated / Evans SS clear |
| Size         | 5.5 X 14" / 6.5 X 14"            |



9554PST-BN / 9654PST-BN

### Steel

|              |                                  |
|--------------|----------------------------------|
| Parts        | Chrome                           |
| Material     | Steel                            |
| Shell Finish | Black Nickel                     |
| Hoops        | Triple flanged                   |
| Heads        | Evans G1 coated / Evans SS clear |
| Size         | 5.5 X 14" / 6.5 X 14"            |



9654PST-BN3

### Steel

|              |                                  |
|--------------|----------------------------------|
| Parts        | Black nickel                     |
| Material     | Steel                            |
| Shell Finish | Black nickel                     |
| Hoops        | Triple flanged                   |
| Heads        | Evans G1 coated / Evans SS clear |
| Size         | 6.5 X 14"                        |

Progressive sounds call for progressive measures, and the Dixon Equator series achieves just that with a dual-material concept in each of two unique models: Oak + Steel and Maple + Carbon Fiber. Together, they produce an exciting range of distinctive tones to set your sound apart from the rest.



AR554HB-1

### Oak Shell + Steel Ring

|              |  |
|--------------|--|
| Parts        | Chrome   |
| Material     | Oak shell + steel ring                                 |
| Shell Finish | Gloss see-through black + steel-like PVC strap         |
| Hoops        | Zinc die-cast hoops                                    |
| Heads        | Evans power center reverse dot coated / Evans SS clear |
| Size         | 5.5 X 14"  |



AR554HB-2

### Maple Shell + Carbon Fiber

|              |  |
|--------------|--|
| Parts        | Chrome   |
| Material     | Maple shell + carbon fiber                             |
| Shell Finish | Gloss white + carbon fiber-like sticker strap          |
| Hoops        | Zinc die-cast hoops                                    |
| Heads        | Evans power center reverse dot coated / Evans SS clear |
| Size         | 5.5 X 14"  |



9654PAL

### Aluminum

|              |                                  |
|--------------|----------------------------------|
| Parts        | Chrome                           |
| Material     | Aluminum                         |
| Shell Finish | Satin aluminum                   |
| Hoops        | Triple flanged                   |
| Heads        | Evans G1 coated / Evans SS clear |
| Size         | 6.5 X 14"                        |



9654BR-H

### Hammered Brass

|              |                                  |
|--------------|----------------------------------|
| Parts        | Chrome                           |
| Material     | Hammered brass                   |
| Shell Finish | Brass                            |
| Hoops        | Triple flanged                   |
| Heads        | Evans G1 coated / Evans SS clear |
| Size         | 6.5 X 14"                        |



9654BR-H3

### Hammered Bronze

|              |                                  |
|--------------|----------------------------------|
| Parts        | Black nickel                     |
| Material     | Hammered bronze                  |
| Shell Finish | Bronze                           |
| Hoops        | Triple flanged                   |
| Heads        | Evans G1 coated / Evans SS clear |
| Size         | 6.5 X 14"                        |

# CLASSIC Metal



The snare drum provides the essential foundation for a drum set and the rhythms which come from it, so Dixon developed Classic Series to serve the fundamental needs of drummers of all styles and levels with quality and versatility. The Classic Series snare drums are composed of traditionally-used materials for snare drums. The design of the badge coincides pleasantly with the appearance of the drum, creating that "classic" look.



CS554ST / CS654ST

Steel

|              |  |
|--------------|--|
| Parts        | Chrome   |
| Material     | Steel  |
| Shell Finish | Chrome   |
| Hoops        | 1.6mm regular hoops  |
| Heads        | Premium Taiwan-made head coated / premium Taiwan-made head clear |
| Size         | 5.5 X 14" / 6.5 X 14"  |



CS510ST / CS512ST

Steel

|              |  |
|--------------|--|
| Parts        | Chrome   |
| Material     | Steel  |
| Shell Finish | Chrome   |
| Hoops        | 1.6mm regular hoops  |
| Heads        | Premium Taiwan-made head coated / premium Taiwan-made head clear |
| Size         | 5 X 10" / 5 X 12"<br>• With mounting bracket                     |

# CLASSIC Wood



CS354N / CS413N

6-ply Maple

|              |   |
|--------------|---|
| Parts        | Chrome  |
| Material     | 6-ply maple                                       |
| Shell Finish | Natural   |
| Hoops        | Triple flanged                                    |
| Heads        | Evans Uno coated / premium Taiwan-made head clear |
| Size         | 3.5 X 14" / 4 X 13"                               |



CS610N

6-ply Maple

|              |  |
|--------------|--|
| Parts        | Chrome   |
| Material     | 6-ply maple                                      |
| Shell Finish | Natural  |
| Hoops        | Triple flanged                                   |
| Heads        | Evans G1 coated / premium Taiwan-made head clear |
| Size         | 6 X 10"  |



CS713N

6-ply Maple

|              |  |
|--------------|--|
| Parts        | Chrome   |
| Material     | 6-ply maple                                      |
| Shell Finish | Natural  |
| Hoops        | Triple flanged                                   |
| Heads        | Evans G1 coated / premium Taiwan-made head clear |
| Size         | 7 X 13"  |



CS554N

6-ply Maple

|              |  |
|--------------|--|
| Parts        | Chrome   |
| Material     | 6-ply maple                                      |
| Shell Finish | Natural  |
| Hoops        | Triple flanged                                   |
| Heads        | Evans G1 coated / premium Taiwan-made head clear |
| Size         | 5.5 X 14"  |



CS554BB-BK / CS612BB-BK / CS713BB-BK / CS654BB-BK / CS814BB-BK

6-ply Maple

|              |   |
|--------------|---|
| Parts        | Black   |
| Material     | 6-ply maple   |
| Shell Finish | Natural to black burst                              |
| Hoops        | Triple flanged                                      |
| Heads        | Evans G1 coated / premium Taiwan-made head clear    |
| Size         | 5.5 X 14" / 6 X 12" / 7 X 13" / 6.5 X 14" / 8 X 14" |



CS512WB-SN / CS654WB-SN / CS713WB-SN

Walnut + Cherry Wood

|              |  |
|--------------|--|
| Parts        | Chrome   |
| Material     | Walnut + cherry wood                             |
| Shell Finish | Satin natural                                    |
| Hoops        | Triple flanged                                   |
| Heads        | Evans G1 coated / premium Taiwan-made head clear |
| Size         | 5 X 12" / 6.5 X 14" / 7 X 13"                    |

# HARDWARE

Dixon hardware has been known for its quality and value for decades. Simple and functional designs have made it a reliable favorite for drummers worldwide. From retro to modern, lightweight to heavy-duty, Dixon offers a wide range of stands, pedals and thrones for all applications.

## CAJON HARDWARE PACK

Dixon Cajon Hardware Packs enable you to expand the rhythms and convenience of your cajon. With two kit configurations for either sticks or hands, you can easily turn your box drum into a rhythmic playground for the gig or at home. Each pack comes complete with basic stands and adaptors ready to mount your favorite percussion and effects to create your unique set-up. A padded carrying bag is included.

### P-CPCJ3

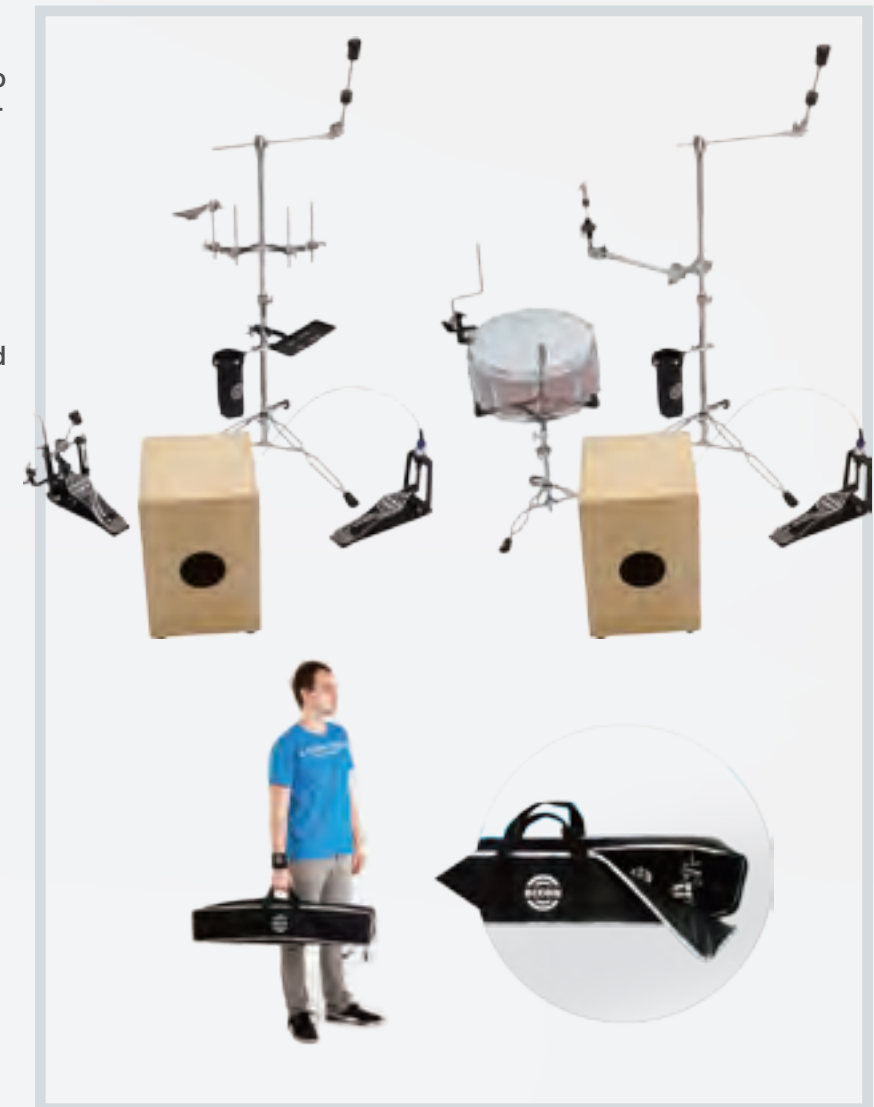
#### Hand Percussion Setup includes:

- Double-braced boom stand
- Cymbal stacker
- Cowbell slapper
- Adjustable tray table
- Stick bag
- Percussion mount w/ 4-piece post
- Percussion pedal mount
- Carrying bag (PCB-DKS)

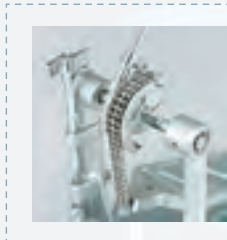
### P-CPCJ4

#### Drum Kit Setup includes:

- Double-braced boom stand
- Double-braced snare stand
- Cymbal stacker
- Auxiliary hi-hat w/ mount
- Stick bag
- Snare hoop percussion mount
- Carrying bag (PCB-DKS)



# K-Series



## PP-K900-KS

### Single Pedal

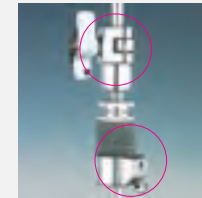
- Double-chain, pro sprocket drive cam
- Easy-reach toe clamp adjustment
- Adjustable rocker hub and glider bearing
- Nylon carrying bag (PCB-SB)



## PP-K900D-KS

### Double Pedal

- Double-chain, pro sprocket drive cam
- Easy-reach toe clamp adjustments
- Adjustable rocker hubs and glider bearings
- Dual U-joint adjustable connecting bar
- Nylon carrying bag (PCB-DB)



US PAT. NO. 6,011,209  
US PAT. NO. 5,808,217  
Patented clutch design to eliminate slipping



Patented drawbridge pedal plate for solid play and portability

## PSH-K900-KS

### Hi-Hat Stand

- Patented drawbridge pedal plate for easy transport and tilted positioning
- Versa-spur for increased stability and set up options
- Five position tension adjustment
- Uni-lever pull-system for elevated feel and action
- A-frame joint castings with precision memory locks and nylon tube inserts for rattle-free performance
- Rotating tripod with cast collar and captive threaded insert
- Heavy gauge tubing, and double-braced base
- Adjustable up to 42"



Dixon EZ Cymbal Set  
PAWN-IVEZ-HP  
Patent pending

- Replacing cymbal stand wing nut for quick set-up
- Standard on all K-Series cymbal stands

## PSY-K900-KS

### Cymbal Stand

- Rotating toothless tilter for infinite one-step adjustments
- Dixon EZ cymbal set wing nut alternative included
- A-frame joint castings with precision memory locks and nylon tube inserts for rattle-free performance
- Cast tripod collar with captive threaded insert
- Road worthy conscience design featuring heavy gauge tubing, sturdy double-braced base and double chrome plating
- Adjustable up to 66"



## PSY-CW-KS

Optional boom counter weight for PSY-K900I

## PSY-K900I-KS

### Cymbal Boom Stand

- Rotating toothless tilter for infinite one-step adjustments
- Dixon EZ cymbal set wing nut alternative included
- Hideaway boom arm with memory lock
- A-frame joint castings with precision memory locks and nylon tube inserts for rattle-free performance
- Cast tripod collar with captive threaded insert
- Road worthy conscience design featuring heavy gauge tubing, sturdy double-braced base and double chrome plating
- Adjustable up to 75"

# K-Series



360-degree adjustment  
TW PAT.NO.060407  
CHINA PAT.NO.74863



**PSS-K900-KS**  
Snare Stand

- Detachable 360-degree poly ball basket adjustment
- A-frame joint castings with memory locks and nylon tube inserts
- Cast tripod collar with captive threaded insert
- Heavy gauge tubing, sturdy double-braced base
- Adjustable up to 26"



**PST-K952T-KS**  
Double Tom Stand

- Tri-mount platform with two poly ball arms
- A-frame joint castings with memory locks and nylon tube inserts
- Cast tripod collar with captive threaded insert
- Heavy gauge tubing, sturdy double-braced base
- Adjustable up to 49"



**PST-K953T-KS**  
Combination Cymbal / Tom Stand

- Tri-mount platform with one poly ball arm and one ratcheting hide away boom arm
- Rotating toothless tilter for infinite one-step adjustments
- Dixon EZ cymbal set included
- A-frame joint castings with memory locks and nylon tube inserts
- Cast tripod collar with captive threaded insert
- Heavy gauge tubing, sturdy double-braced base
- Adjustable up to 50"



**PSN-K902HBW-KS**  
15" Drum Throne

- Three-colored seat with memory lock height adjustment



**PSN-K902TBW-KS**  
15" Drum Throne

- Blue and white seat with memory lock height adjustment



**PSN-K900-KS**  
15" Drum Throne

- Cordura / Vinyl seat with memory lock height adjustment



**PSN-K904-KS**  
17" Drum Throne

- Cordura / Vinyl oversize seat with memory lock height adjustment



**PSN-K906-KS**  
17" Drum Throne

- Black cordovan / Gel oversize seat with memory lock height adjustment

# K-Series

## DISPLAY RACK



**PSN-K900HM-KS**  
15" Drum Throne

- Motorcycle seat with hydraulic height adjustment



**PSN-K800SFT-KS**  
13" Drum Throne

- Super soft seat with memory lock height adjustment



**PSN-K900MB-KS**  
16" Drum Throne

- Motorcycle seat with adjustable backrest and memory lock height adjustment



PAKL-RMC-CR and  
PAKL-RML-CR



PAKL-RMC-CR and  
PAKL-RML-CR



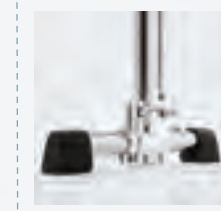
PAKL-RMC-CR and  
PAKL-RML-CR



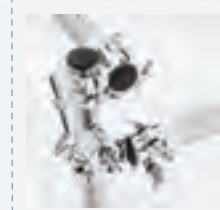
**PSO-900ES-CR**  
Display Rack

Extra-sturdy / Collapsible Rack  
Chrome finish

PSOB-43B X 3 (43" horizontal bar)  
PSOB-36B X 4 (36" vertical bar)  
PAKL-CRC-CR X 4 (Right angle clamp)  
PAKL-RMC-CR X 6 (Multi clamp)  
PAKL-RRR-CR X 2 (Right angle clamp)  
PAKL-RML-CR X 6 (Hinged memory clamp)  
PAKL1841-CR X 18 (Anti-rolling clamp)  
PSO-EMTLA X 4 (Mini T-leg w/ extra-sturdy T-leg clamp PAKL-RTC)



PAKL-RTC-CR



PAKL-RRR-CR and  
PAKL-CRC-CR

# 9290 SERIES HEAVY DOUBLE-BRACED



## PSS-9290

### Snare Stand

- Gearless tilter
- Hinged height adjustment
- Memory lock
- Double-braced legs
- Adjustable up to 26"

## PSH-9290

### Hi-Hat Stand

- Direct pull system
- Tension adjustment
- Rotating base
- Memory lock
- Hinged height adjustment
- Double-braced legs
- Adjustable up to 42"

## PSY-9298 **Upgraded**

### Cymbal Stand

- Upgraded tilter
- 8mm universal tilter
- Hinged height adjustment
- Memory locks
- Double-braced legs
- Adjustable up to 66"

## PSY-9298I **Upgraded**

### Cymbal Boom Stand

- Upgraded tilter
- 8mm universal tilter
- Hinged height adjustment
- Memory locks
- Double-braced legs
- Hideaway boom arm
- Dual boom arm adjustment
- 15" solid boom arm
- Adjustable up to 75"

## PSH-9290C

### Cable Hi-Hat Stand

- Direct pull system
- Tension adjustment
- Rotating base
- Clamp not included
- Cymbal boom stand and mount not included



## PP-9290

### Single Pedal

- Double chain cam driven system
- Stabilizer platform with built-in spurs
- Dual surface beater
- Beater angle adjustment



## PP-9290D

### Double Pedal

- Double chain cam driven system
- Stabilizer platform with built-in spurs on both pedals
- Beater angle adjustment



Heavy cast "sure-grip" spindle height adjustment with memory lock

## PSN-9290

### Drum Throne

- Thick cushion
- Cast spindle adjustment
- Memory lock
- Double-braced legs
- Adjustable up to 19.5" - 23.5"

# 9280 SERIES MEDIUM DOUBLE-BRACED



## PSS-9280

### Snare Stand

- Geared tilter
- Hinged height adjustment
- Double-braced legs
- Adjustable up to 26"

## PSH-9280

### Hi-Hat Stand

- Direct pull system
- Tension adjustment
- Rotating base
- Memory lock
- Double-braced legs
- Adjustable up to 42"

## PSY-9288 Upgraded

### Cymbal Stand

- Upgraded tilter
- 8mm deluxe geared tilter
- Hinged height adjustment
- Double-braced legs
- Adjustable up to 67"

## PSY-9288I Upgraded

### Cymbal Boom Stand

- 8mm deluxe geared tilter
- Hinged height adjustment
- Double-braced legs
- Hideaway boom arm
- Dual boom arm adjustment
- 13" solid boom arm
- Adjustable up to 59"
- Also available in PSY-9285I-3 (3-section version)

## PP-9280

### Single Pedal

- Single chain sprocket/cam drive system
- Stabilizer platform with built-in spurs
- Beater angle adjustment

## PP-9280D

### Double Pedal

- Single chain cam drive system
- Stabilizer platform on slave side pedal
- Beater angle adjustment

## PSN-9280

### Drum Throne

- Thick cushion
- Sliding adjustment
- Memory lock
- Double-braced legs
- Adjustable up to 19" - 28"



# 9270 SERIES LIGHT DOUBLE-BRACED



## PSS-9270

### Snare Stand

- Geared tilter
- Hinged height adjustment
- Double-braced legs
- Adjustable up to 26"

## PSH-9270

### Hi-Hat Stand

- Direct pull system
- Hinged height adjustment
- Double-braced legs
- Adjustable up to 42"

## PSY-9270

### Cymbal Stand

- 8mm geared tilter
- Hinged height adjustment
- Double-braced legs
- Adjustable up to 47"

## PSY-9270I

### Cymbal Boom Stand

- 8mm geared tilter
- Hinged height adjustment
- Double-braced legs
- Hideaway boom arm
- Dual boom arm adjustment
- 13" solid boom arm
- Adjustable up to 26"

## PP-9270

### Single Pedal

- Single chain sprocket/cam drive system
- Stabilizer platform with built-in spurs

## PP-9270D

### Double Pedal

- Single chain cam drive system
- Stabilizer platform on slave side pedal

## PSN-9270

### Drum Throne

- Thick cushion
- Incremental adjustment
- Double-braced legs
- Adjustable up to 21"- 27"



## 9260 SERIES STANDARD SINGLE-BRACED

## 9290S SERIES HEAVY SINGLE-BRACED

The same features as our 9290 double-braced stands, only more compact for a lighter load and tighter set up.



PP-9260  
Single Pedal



PSS-9260  
Snare Stand



PSH-9260  
Hi-Hat Stand



PSY-9260  
Cymbal Stand



PSY-92601  
Cymbal Boom Stand



PSN-9260  
Drum Throne



PSY-9290S  
Cymbal Stand

PSS-9290S  
Snare Stand

PSY-92981S **Upgraded**  
Cymbal Boom Stand

PSH-9290S  
Hi-Hat Stand

# CAJON PEDAL PLUS

## PP9290CP

Multifunctional cajon pedal that makes mounting quick, easy and obstruction-free. It can also be mounted to most hardware diameters in striking distance of auxiliary percussion and effects.



## Multi-Functional Remote Pedal



# INVENTOR SERIES

## BRITE KEY



## PAKE-IVBR-BP

Multifunctional drum key with bottle opener and LED flashlight



## EZ CYMBAL SET







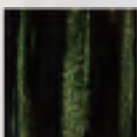
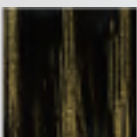




## PAWN-IVEZ-HP, 1PC/PK PAWN-IVEZ/2-HP, 2PCS/PK

A quick-release alternative to wing nuts at the top of the cymbal tilter for faster setup time

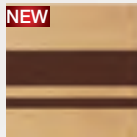
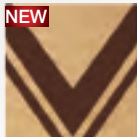





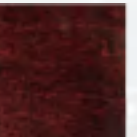
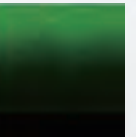
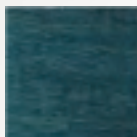





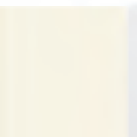
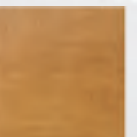


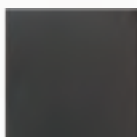
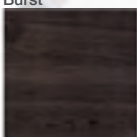
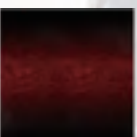

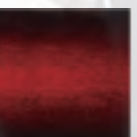
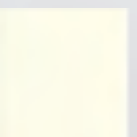
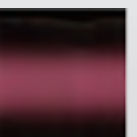
# ARTISAN Premium Lacquer

\*Mystic River, Mystic Crimson and Mystic Jade are only applicable to Artisan Limited Series Tamo Ash Wood.


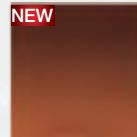
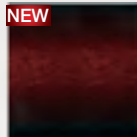



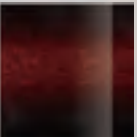
|  |  |  |  |   |   |  |   |   |
|--|--|--|--|---|---|--|---|---|
| <br><b>BLG</b><br>Blue Lagoon    | <br><b>LGS</b><br>Lucite Green Stripe | <br><b>*MRB</b><br>Mystic River       | <br><b>*MRR</b><br>Mystic Crimson | <br><b>*MRG</b><br>Mystic Jade   | <br><b>DVOB</b><br>Division Ocean Blue | <br><b>DVPB</b><br>Division Piano Black     | <br><b>DVRV</b><br>Division Retro Yellow | <br><b>DVSW</b><br>Division Snow White |
| <br><b>MXC</b><br>Matrix Copper  | <br><b>MXG</b><br>Matrix Green        | <br><b>MXGD</b><br>Matrix Gold        | <br><b>MXR</b><br>Matrix Red      | <br><b>MXSL</b><br>Matrix Silver | <br><b>PPS</b><br>Purple Sparkle       | <br><b>RCBS</b><br>Red Copper Burst Sparkle | <br><b>SDB</b><br>Star Dust Black        | <br><b>SDBL</b><br>Star Dust Blue      |
| <br><b>SDG</b><br>Star Dust Gray | <br><b>SDR</b><br>Star Dust Red       | <br><b>BLBS</b><br>Blue Burst Sparkle |  |   |   |  |   |   |

# ARTISAN Lacquer

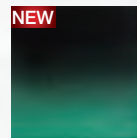
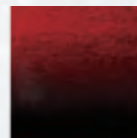
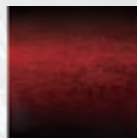
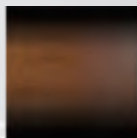
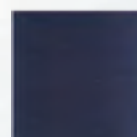
\*Brown Stripe and Brown V Stripe are exclusively for Artisan Limited Ultra Maple.

|   |   |  |   |   |  |   |   |   |
|---|---|--|---|---|--|---|---|---|
| <br><b>*BSP</b><br>Brown Stripe                   | <br><b>*BVSP</b><br>Brown V Stripe       | <br><b>AAB</b><br>Antique Amber Burst         | <br><b>AR</b><br>Candy Apple Red           | <br><b>BB</b><br>Brown Burst               | <br><b>BC</b><br>Black Cherry         | <br><b>CG</b><br>Cool Gray       | <br><b>DW</b><br>Dark Walnut       | <br><b>EF</b><br>Emerald Fade    |
| <br><b>MB</b><br>Mystic Blue                    | <br><b>MBB</b><br>Midnight Black Burst | <br><b>MCPB</b><br>Midnight Champagne Burst | <br><b>N</b><br>Natural                  | <br><b>NBB</b><br>Natural to Black Burst | <br><b>PB</b><br>Piano Black        | <br><b>PLW</b><br>Pearl White  | <br><b>SB</b><br>Satin Blonde    | <br><b>SN</b><br>Satin Natural |
| <br><b>SNBB</b><br>Satin Natural to Black Burst | <br><b>ST</b><br>Satin Titanium        | <br><b>STB</b><br>See-Through Black Burst   | <br><b>STRB</b><br>See-Through Red Burst | <br><b>SW</b><br>Snow White              | <br><b>VRB</b><br>Vintage Red Burst | <br><b>VW</b><br>Vintage White | <br><b>WRB</b><br>Wine Red Burst |   |


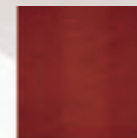
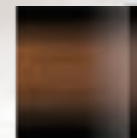
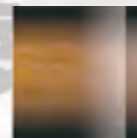

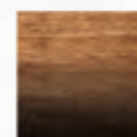
# BLAZE Lacquer

|  |   |  |  |  |  |   |
|--|---|--|--|--|--|---|
| <br><b>MTB</b><br>Metallic Blue | <br><b>AAF</b><br>Antique Amber Fade | <br><b>SSTRB</b><br>Satin See-Through Red Burst | <br><b>GF</b><br>Green Forest | <br><b>EF</b><br>Emerald Fade | <br><b>N</b><br>Natural | <br><b>STRB</b><br>See-Through Red Burst |
|--|---|--|--|--|--|---|

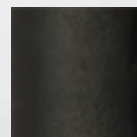

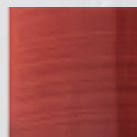
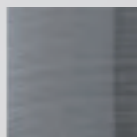
# FUSE Profile Cherry Satin Stain

|  |   |   |  |
|--|---|---|--|
| <br><b>SGIF</b><br>Satin Green Ice Fade | <br><b>SCRFB</b><br>Satin Candy Red Fade | <br><b>SCRB</b><br>Satin Candy Red Burst | <br><b>SBB</b><br>Satin Natural Cherry to Black Burst |
| <br><b>SMB</b><br>Satin Midnight Blue   |   |   |  |






# FUSE Profile Maple Gloss Stain

|   |  |   |  |
|---|--|---|--|
| <br><b>GIF</b><br>Green Ice Fade       | <br><b>AM</b><br>Amber                  | <br><b>BB</b><br>Brown Burst | <br><b>BKB</b><br>Black Burst |
| <br><b>CRF</b><br>Gloss Candy Red Fade | <br><b>NBF</b><br>Natural to Black Fade |   |  |



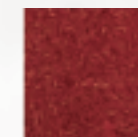
# SPARK Deluxe Wrap

|   |  |   |  |
|---|--|---|--|
| <br><b>MBK</b><br>Misty Black | <br><b>CBL</b><br>Cyclone Blue | <br><b>CRD</b><br>Cyclone Red | <br><b>CSV</b><br>Cyclone Silver |
|---|--|---|--|

# Jet Set Wrap

|   |   |   |  |   |
|---|---|---|--|---|
| <br><b>BK</b><br>Black | <br><b>DB</b><br>Dark Blue | <br><b>GM</b><br>Gum Metal | <br><b>WR</b><br>Wine Red | <br><b>WT</b><br>White |
|---|---|---|--|---|

# Jet Set Plus Deluxe Wrap

|  |  |   |
|--|--|---|
| <br><b>DBS</b><br>Deep Blue Sparkle | <br><b>OS</b><br>Orange Sparkle | <br><b>RS</b><br>Red Sparkle |
|--|--|---|

# DRUMS AND HARDWARE A SOUND CHOICE

**Dixon (International)**

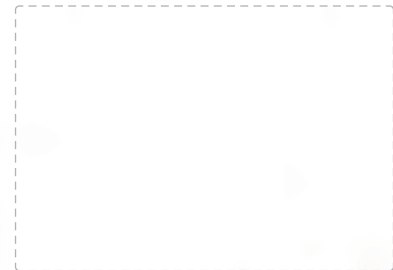
✉ [contact@playdixon.com](mailto:contact@playdixon.com)

🌐 [playDIXON.com](http://playDIXON.com)

**St. Louis Music / Dixon U.S.A.**

✉ [dixon@stlouismusic.com](mailto:dixon@stlouismusic.com)

🌐 [playDIXON.com](http://playDIXON.com)



DP-01-2016

Due to limitations in photography, illustrated color may vary slightly from actual color. Product specifications described herein are subject to change without notice.