

# Avante Vetrec PDM

## Patient Data Management System

### All-in-one wireless central station monitor

The Vetrec PDM helps track vital signs and manage patient data from pre-op through discharge!

- Wirelessly monitor vital signs of up to six patients throughout your facility from a single location.
- The Vetrec PDM has a large, color touchscreen that is easy to use and provides immediate operation.
- The compact Vetrec PDM is about the size of a 15" computer monitor and doesn't require a separate telemetry receiver.
- Operates on highly customizable, easy-to-use software.
- Features auto charting; full disclosure (96 hours); auto generation of alarm events; manual recording—ECG analysis; trends, charts and strips for arrhythmia; detection of ECG data; and color waveforms (20 colors). You can also schedule the printing of reports and connect the Vetrec PDM to your network.
- Automatically compiles and archives user-selected discharge reports. On networked systems, discharge reports can be sent in PDF format to hospital management systems and emailed to veterinarians.



### Seamless integration with up to six Waveline Pro or Waveline Touch patient monitors

The Vetrec PDM monitors, displays and stores information sent from up to six Avante-brand vital signs monitors in real time. A wireless transmitter that attaches to the back of the monitor provides a direct link to the central station. This makes the patient monitor portable through pre-op, surgery and post-op.

2515-2021-12-20

*With select Avante Waveline monitors, you can monitor up to six patients from the Vetrec PDM!*



### Avante Waveline Pro

- » Displays as many as eight colorful waveforms
- » Lightweight, portable and measures multiple parameters, including ECG (3 or 5 leads) with ST segment monitoring, SpO<sub>2</sub>, NIBP, resp., and dual temp.
- » Configurations are available that measure capnography, dual channel IBP, and anesthetic agents (five agents, N<sub>2</sub>O, FiO<sub>2</sub>, EtCO<sub>2</sub>)
- » Available with a built-in thermal printer

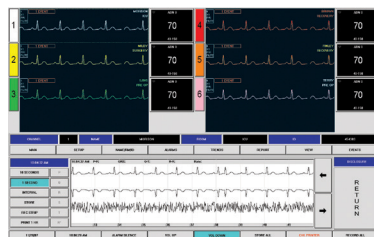


The Vetrec PDM software can be customized to meet the needs of your facility. The software provides:

- » Auto charting of patient vital signs
- » Full disclosure (96 hours)
- » Auto-stop generation of alarm events
- » Manual or automatic strip recording with ECG analysis
- » Ability to schedule the printing of reports
- » Trends charts and strips with arrhythmia detection of ECG data

### Avante Waveline Touch

- » 12.1" color TFT display with a touch-screen interface
- » Measures ECG, SpO<sub>2</sub>, NIBP (Suntech technology), heart rate, resp., and temp.
- » Available with dual invasive blood pressures and EtCO<sub>2</sub>
- » Built-in thermal recorder and built-in battery (optional)
- » Compact design convenient for mobile monitoring



### Easy-to-use touchscreen interface

The compact Vetrec PDM's touchscreen allows you to review, edit and enter patient information while you observe all patients in the system.