

Recessed Puritan Bennett Style Quick Connect Outlets

Submittal Data Sheet

Project Information

Project Number _____ Approval _____

Features

- ETL Listed to UL 1331 and CSA Z9170-1.
- Conforms to NFPA 99 and CGA standards
- Accepts Puritan Bennett gas specific compatible male adaptors
- Compensates for variation in wall thicknesses from ½" to 1 ¼"
- Gas specific indexing
- Modular design
- 5" centers
- All outlets are 100% tested for flow and leaks
- Nameplate color coding per NFPA 99
- 360° swivel inlet tube
- Made in the U.S.A.



Specification

The medical gas wall outlets shall be quick connect medical gas outlets. The outlets shall be modular singles, and shall incorporate nameplate color-coding in accordance with NFPA 99. The single modular outlets shall be of a design that provides for ganging of rough-in plates in the field to form multiples. The gas services shall be sequentially arranged and located as shown on the plans with a minimum centerline spacing of 5" inches (12.5 cm) between outlets.

The medical gas outlets shall be designed so that the primary check valve can be removed for service without shutting off the gas supply to the outlet, the secondary check valve shall operate automatically to stop the free flow of the positive pressure gas services. There shall be no secondary check for Medical Vacuum or WAGD services. The seal between the nameplate and the rough-in shall be a double O-ring which is serviceable without shutting off the gas service and is capable of supporting 10 pounds @ 2" from the nameplate without leaking.

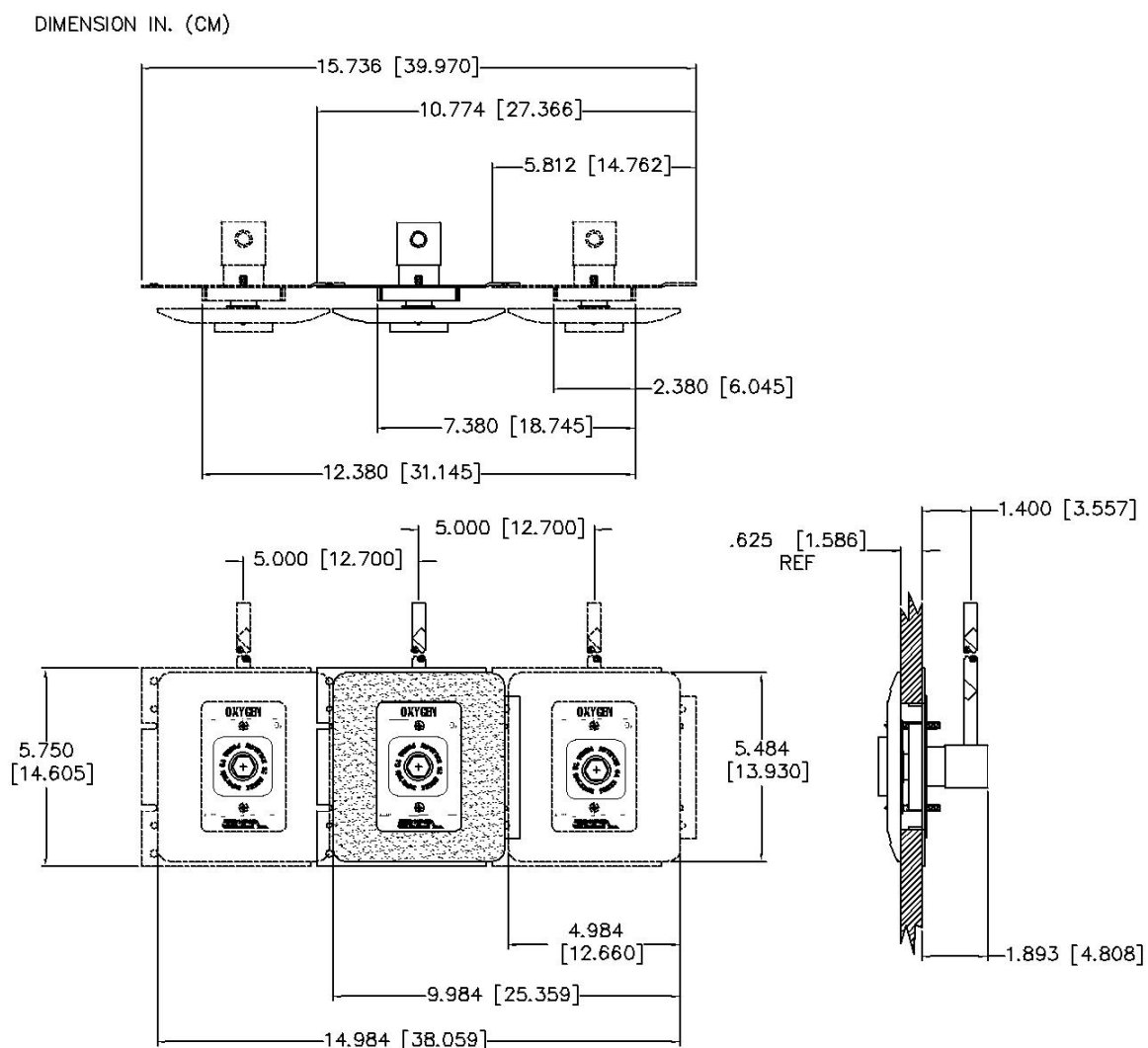
The outlet nameplate shall be permanently color coded with a durable, scratch resistant and protective label. The outlet trim plate shall be durable plastic, attached with the nameplate to the rough-in assembly, and provide automatic plaster adjustment from 1/2 to 1 1/4

of an inch (1.3 cm to 3 cm). The name of the gas service shall be permanently marked on the outlet bracket and the outlet. The outlet's rough-in supply tube shall be a 7 inch (18 cm) length of 1/2 O.D. copper Type K for all gas services and labeled with the name of the gas service.

Medical gas outlets shall be cleaned for oxygen service in accordance with the current Compressed Gas Association (CGA) Pamphlet G-4.1, capped and placed in a protective container for shipment. The outlets shall be installed in strict accordance with manufacturer's instructions, and tested before use in conformance with local and federal codes.



Layout



Ordering Information – Standard Recessed Outlets - Complete

Gas Service	Medical Air	Nitrous Oxide	Oxygen	Medical Vacuum	WAGD	Slide
Part # Recessed Wall	XP1116	XP1104	XP1124	XP1122	XP1132	XF1144