

Puritan Style Console & Headwall Outlets

Submittal Data Sheet

Project Information

Project Number _____ Approval _____

Features

- ETL Listed to UL 1331 and CSA Z9170-1.
- Conforms to NFPA 99 and CGA standards
- Accepts Puritan gas specific compatible male adaptors
- Gas specific indexing
- Removable front assembly
- All outlets are 100% tested for flow and leaks
- Nameplate color coding per NFPA 99
- 360° swivel inlet tube
- Metal back and nameplate
- Strength of connections provides support for dispensing equipment without the use of additional brackets.
- Made in the U.S.A.

Specification

The medical gas console and headwall outlets shall be Puritan compatible quick connect medical gas outlets. The outlets shall be modular singles, and shall incorporate nameplate color-coding in accordance with NFPA 99.

The medical gas outlets shall be designed so that upon removal of the nameplate assembly, the secondary check valve shall operate automatically to stop the free flow of the positive pressure gas services. There shall be no secondary check for Medical Vacuum or WAGD services. The seal between the nameplate and the rough-in shall be a double O-ring which is serviceable without shutting off the gas service and is capable of supporting 10 pounds @ 2" from the nameplate without leaking.



The outlet nameplate shall be permanently color coded with a durable, scratch resistant and protective label. The outlet trim plate part # XC1000-10 (optional – shown below) shall be durable plastic, scratch resistant, attached with the nameplate to the rough-in assembly. The name of the gas service shall be permanently marked on the outlet bracket and the outlet. The outlet's rough-in supply tube shall be a 7 inch (18 cm) length of 1/2 O.D.copper Type K for all gas services and labeled with the name of the gas service.

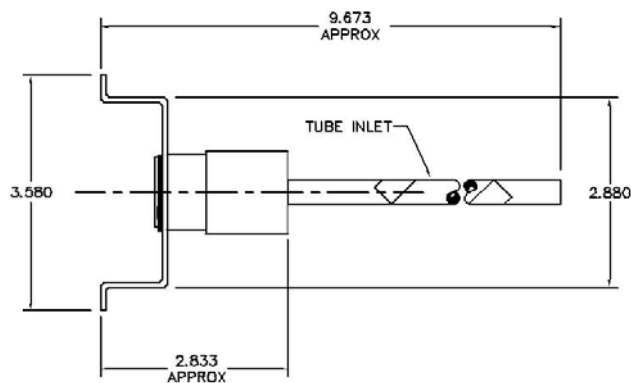
Medical gas outlets shall be cleaned for oxygen service in accordance with the current Compressed Gas Association (CGA) Pamphlet G-4.1, capped and placed in a protective container for shipment. The outlets shall be installed in strict accordance with manufacturer's instructions, and tested before use in conformance with NFPA 99, local and state codes.



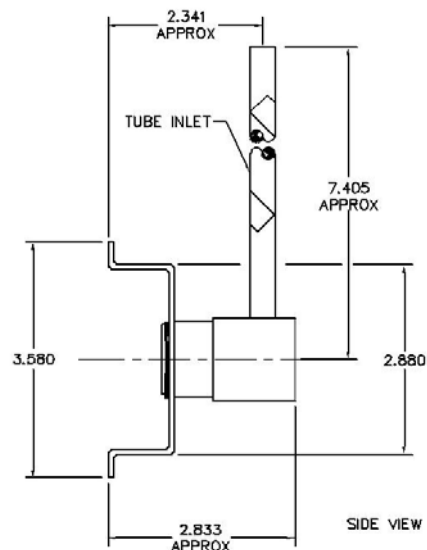
XP5724 with XC1000-10 trim plate

Puritan Style Console & Headwall Outlets

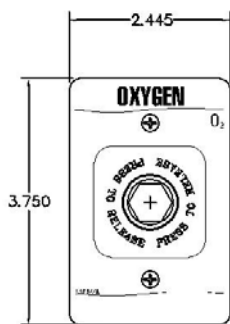
Layout



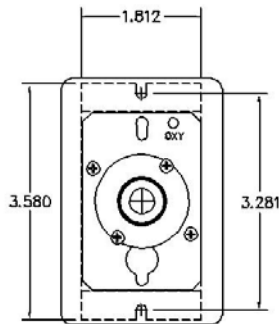
XP56 SERIES



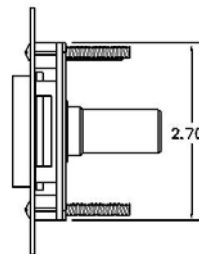
XP57 SERIES



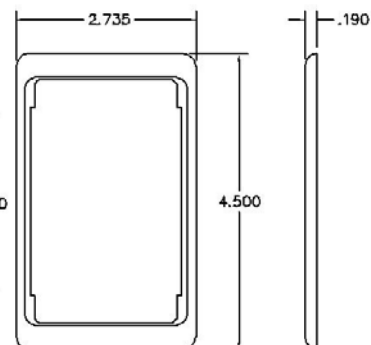
FRONT VIEW
FRONT
ASSEMBLY



BACK VIEW
FRONT
ASSEMBLY



SIDE VIEW
FRONT
ASSEMBLY



OPTIONAL TRIM PLATE
XC1000-10

Ordering Information

Gas Service	Nitrous Oxide	Medical Air	Medical Vacuum	Oxygen	WAGD
Part Number	XP5604	XP5616	XP5622	XP5624	XP5632
Tube Size	1/2 OD				

Gas Service	Nitrous Oxide	Medical Air	Medical Vacuum	Oxygen	WAGD
Part Number	XP5704	XP5716	XP5722	XP5724	XP5732
Tube Size	1/2 OD				