



ESO Operational Transparency Forum

29th July 2020

Introduction

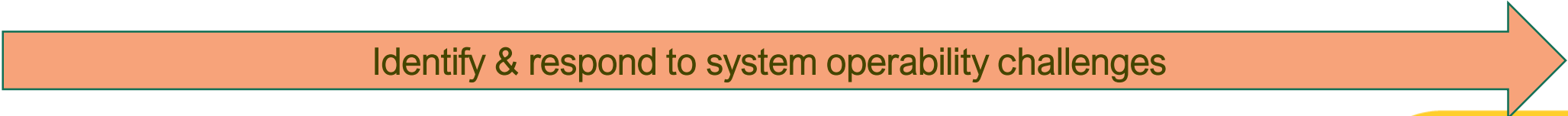
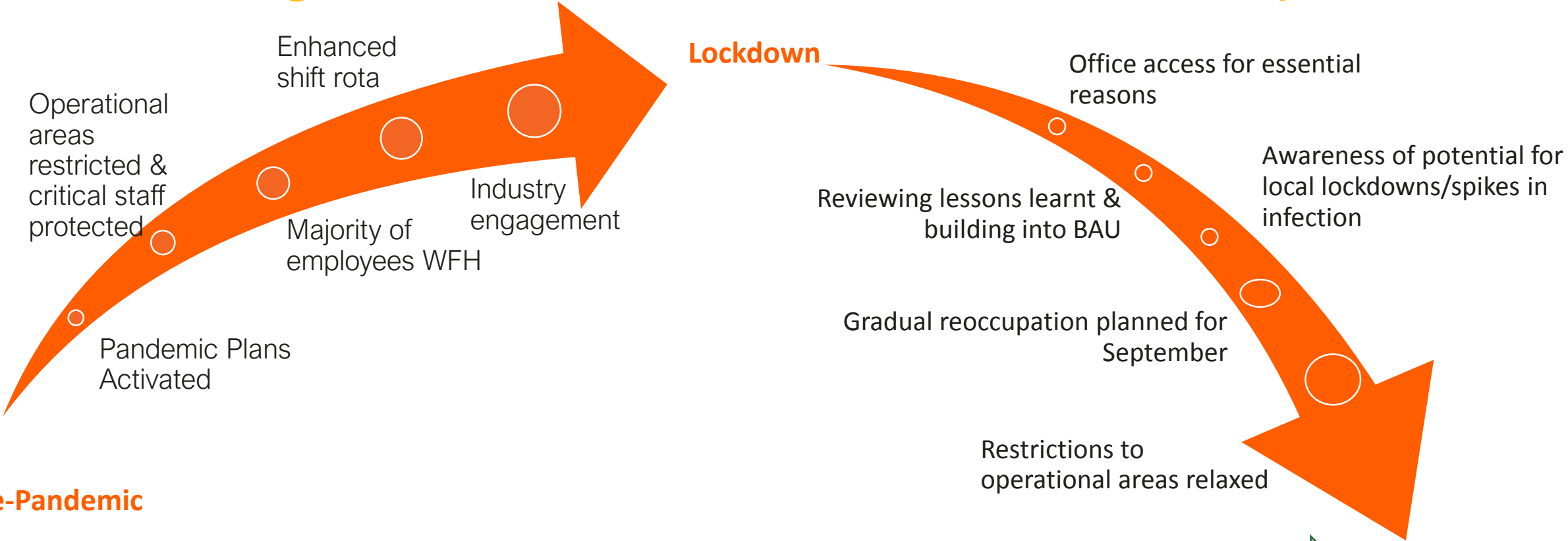
Please ask any questions via the Q&A section in Webex and we will pick them all up at the end of the session and answer those now which we can. We may have to take away some questions and provide feedback from our expert colleagues in these areas.

These slides, event recordings and further information about the webinars can be found at the following location:
data.nationalgrideso.com/plans-reports-analysis/covid-19-preparedness-materials

Key topics for this week:

- Review of demands
- ESO actions over the weekend
- Issue of localised NRAPM
- Transparency – visibility of despatch decisions

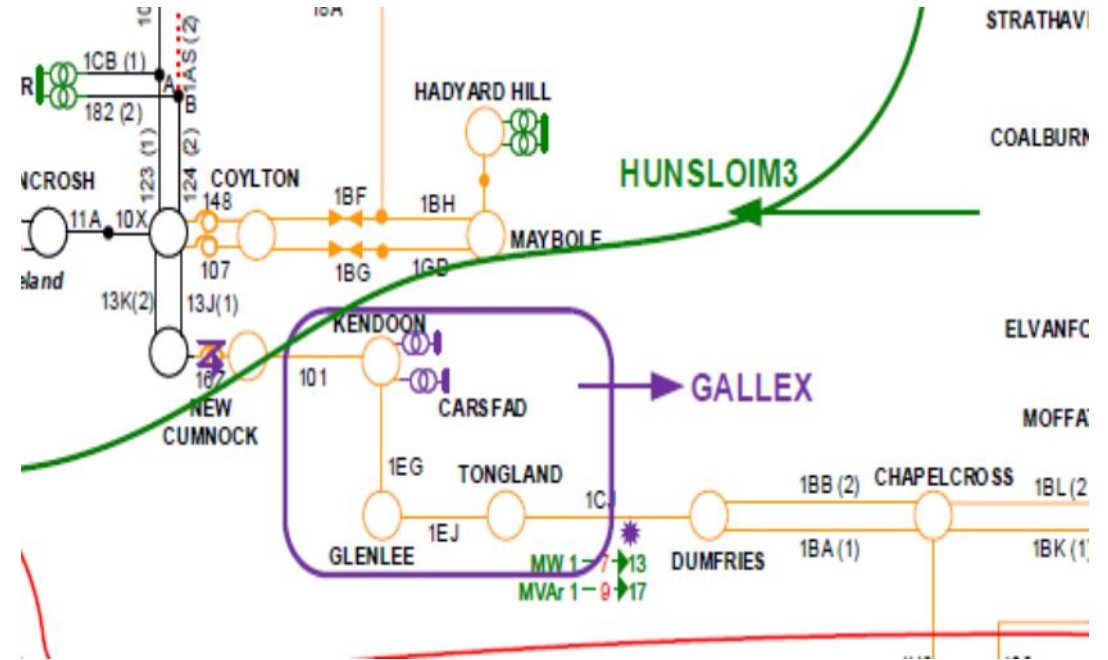
Protecting Critical Staff to maintain Critical Operations



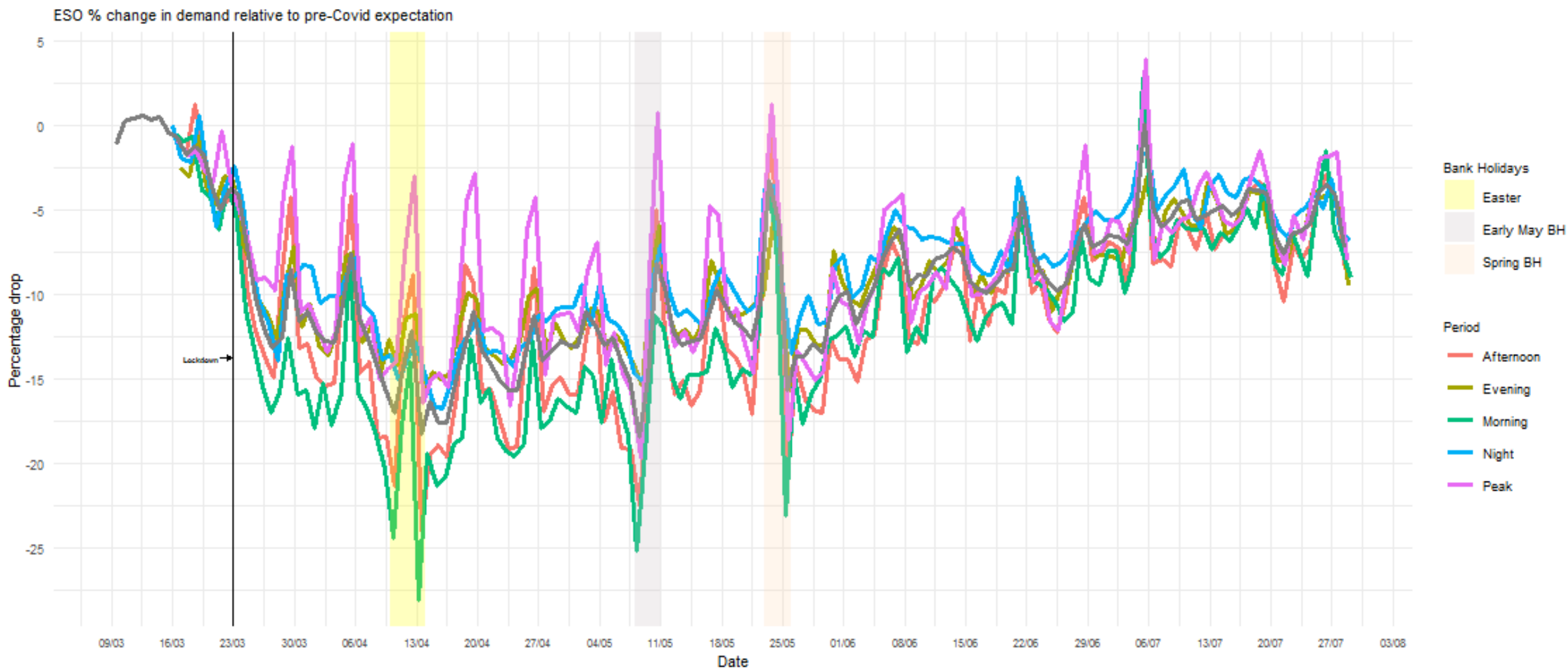
Transparency | Issue of localised NRAPM

Gallex constraint

- Load management scheme (LMS) installed
- Large volumes of embedded DER—only some visible
- No active BM units
- Forecast flow normally managed via trades and LMS
- In real time EI only way of instructing visible embedded units



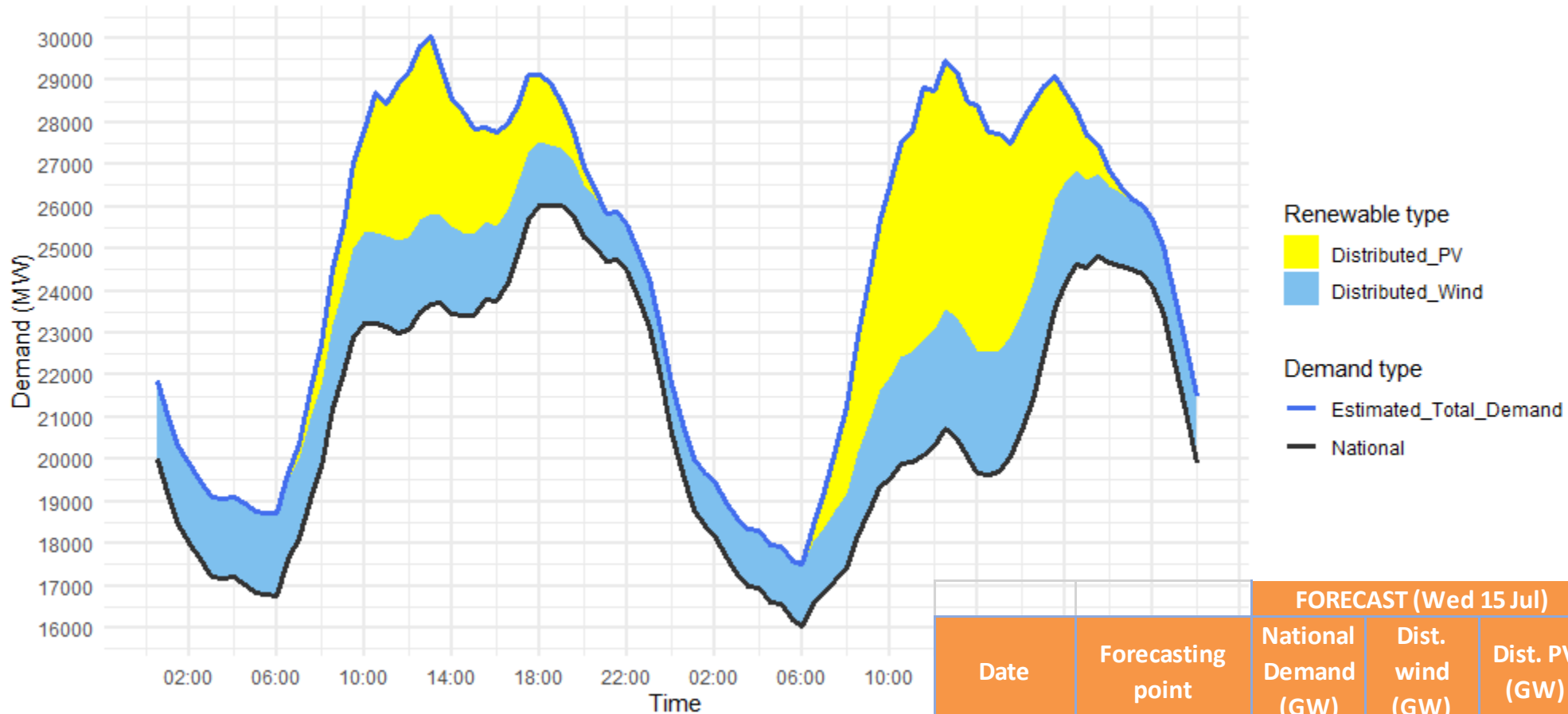
ESO % change in demand relative to pre COVID expectations



In the **last 7 days** rolling average overall demand has been **5.6%** lower than expected
Last week & two weeks ago it was 5.1%, at the end of June it was 8.4%

Demand | Last Weekend Outturn

ESO National Demand outturn 25th & 26th July 2020

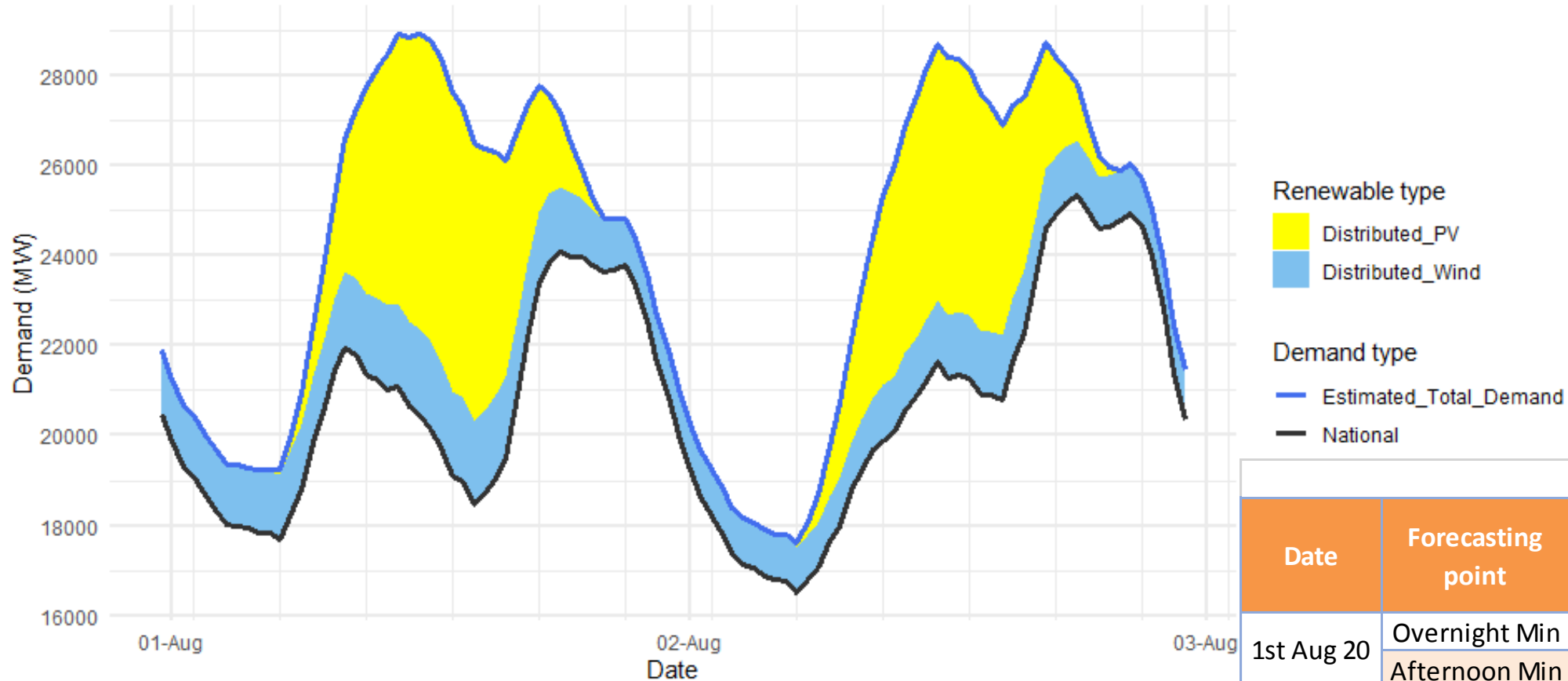


Date	Forecasting point	FORECAST (Wed 15 Jul)			OUTTURN		
		National Demand (GW)	Dist. wind (GW)	Dist. PV (GW)	National Demand (GW)	Dist. wind (GW)	Dist. PV (GW)
25 July 2020	Overnight Min	16.8	1.0	0.1	16.8	1.9	0.0
	Afternoon Min	19.9	1.6	5.1	23.4	2.0	2.9
26 July 2020	Overnight Min	16.5	0.8	0.3	16.0	1.4	0.1
	Afternoon Min	20.4	1.2	6.0	19.6	2.9	5.2

Demand | Forecast for this Weekend

ESO Demand forecast 1st & 2nd August 2020

based on the current government policies in relation to the pandemic and on the latest weather forecast

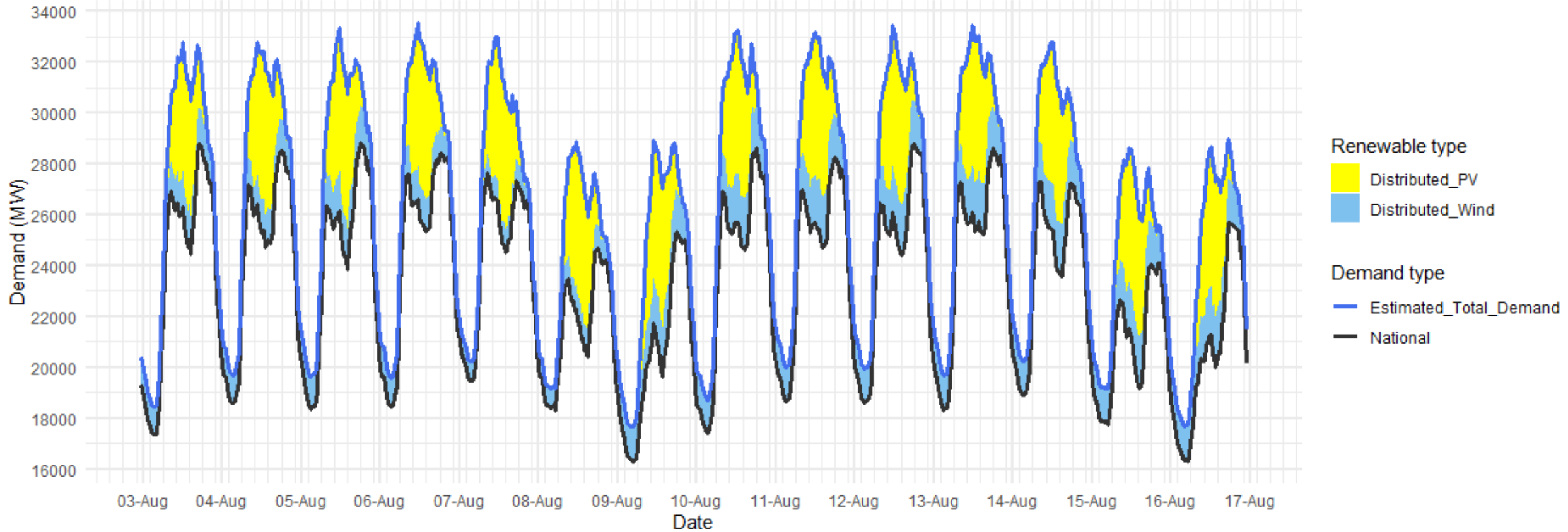


		FORECAST (Wed 29 Jul)		
Date	Forecasting point	National Demand (GW)	Dist. wind (GW)	Dist. PV (GW)
1st Aug 20	Overnight Min	17.7	1.4	0.1
	Afternoon Min	18.5	1.9	6.1
2nd Aug 20	Overnight Min	16.5	1.0	0.1
	Afternoon Min	20.8	1.4	4.7

Demand | Longer Term Forecast

ESO Demand forecast 3rd to 16th August 2020

based on the current government policies in relation to the pandemic
and on the latest weather forecast

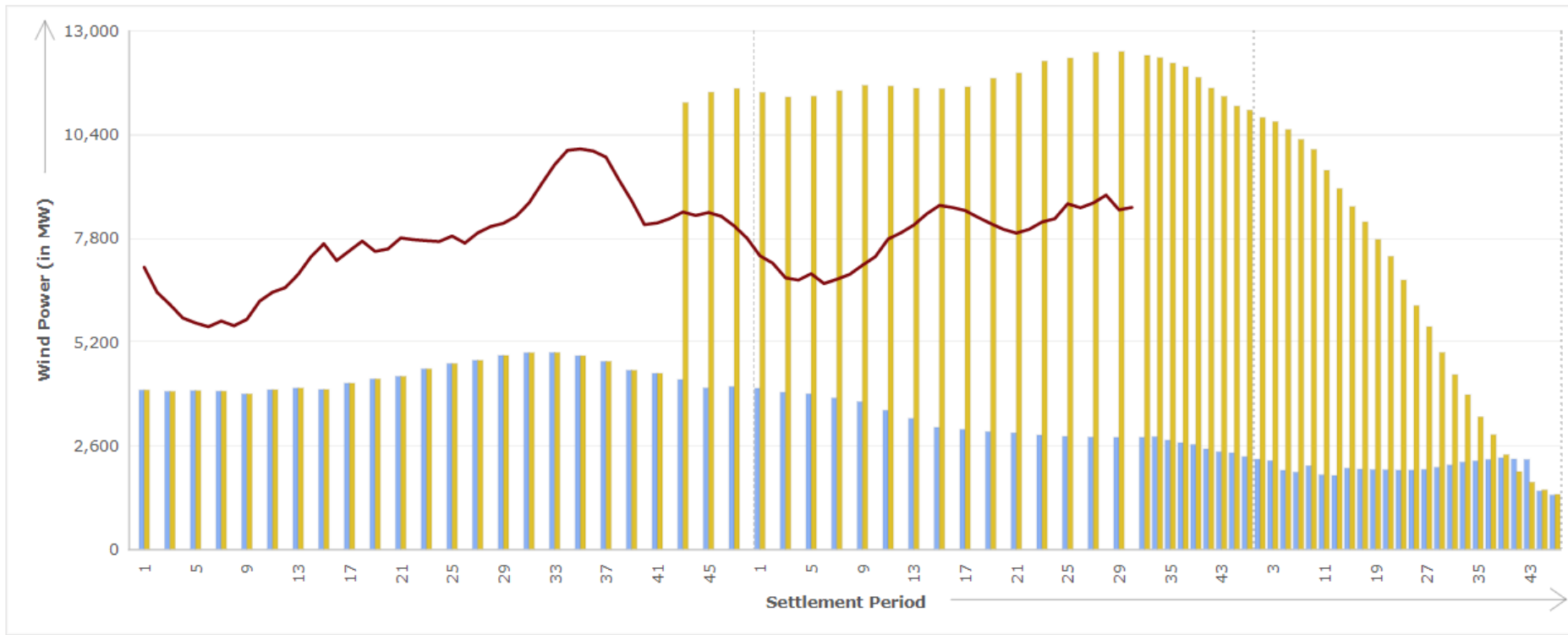


Transparency : Wind Power Forecasts | BM Reports

Home Generation Wind Forecast Out-turn

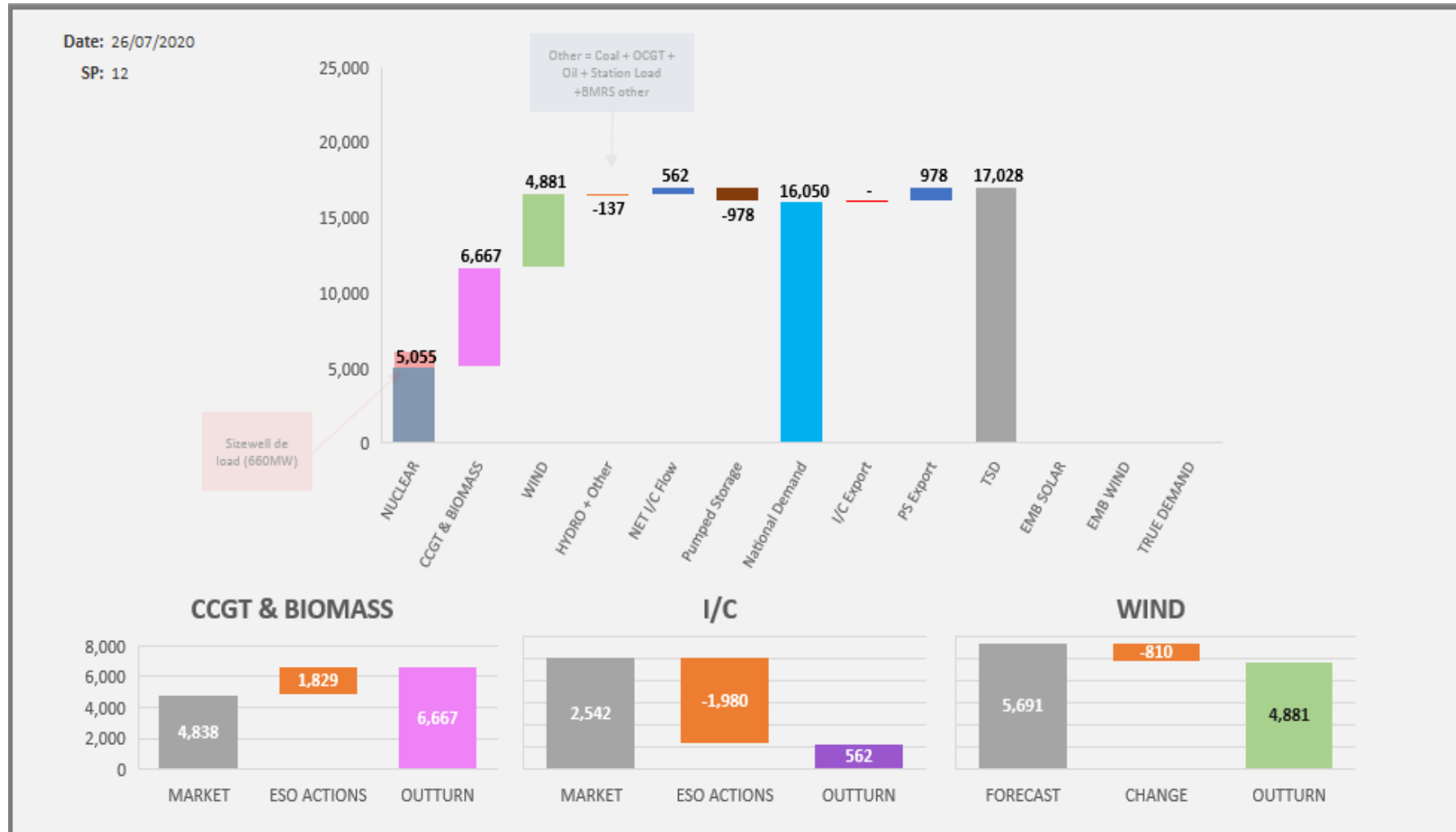
Wind Forecast Out-turn

Data referring to : 2020-07-27, 2020-07-28, 2020-07-29



Initial Forecast Value Latest Forecast Value Out-turn Forecast Value

ESO Actions | 26th June overnight minimum



Transparency | Dispatch efficiency

- We intend to start publishing skip rate data and a supporting methodology under our Forward Plan deliverable “Data to support better understanding our dispatch decisions”.
- Our plan is to publish this information by the end of Q4 20/21, but in advance of this, we will be engaging with industry about the format of the published data and methodology.
- The skip rate publication will provide details on the reasons actions were taken out of price merit, which will therefore support understanding system needs and how the market operates.
- We can discuss this further at future webinars

Q&A

After the webinar, you will receive a link to a survey. We welcome feedback to understand what we are doing well and how we can improve the event ongoing.

Please ask any questions via the Q&A section in Webex and we will try to answer as many as possible now

Please continue to use your normal communication channels with ESO

If you have any questions after the event, please contact the following email address:

box.NC.Customer@nationalgrid.com

