



# ESO Operational Transparency Forum

11 August 2021

You have been joined in listen only mode,  
please ensure your cameras are turned off

## Introduction | Sli.do code #OTF

**Please visit [www.sli.do](http://www.sli.do) and enter the code #OTF to ask questions & provide us with post event feedback.**

We will answer as many questions as possible at the end of the session. We may have to take away some questions and provide feedback from our expert colleagues in these areas during a future forum.

Please continue to use your normal communication methods with the ESO including the below:

For future market developments: [box.futureofbalancingservices@nationalgrideso.com](mailto:box.futureofbalancingservices@nationalgrideso.com)

For pathfinders: [box.networkdevelopment.roadmap@nationalgrideso.com](mailto:box.networkdevelopment.roadmap@nationalgrideso.com)

These slides, event recordings and further information about the webinars can be found at the following location:

<https://data.nationalgrideso.com/plans-reports-analysis/covid-19-preparedness-materials>

### Regular Topics

- Questions from last week
- Business continuity
- Demand review and outlook
- Costs for last week
- Constraints

### Additional Topics

- Energy Trading – Data Transparency update

## Questions outstanding from last week

*A number of questions asked last week have been passed to the team who will be hosting the DC webinar.*

**Q: Any news on the opening date for stability Pathfinder 3? Will it be this year?**

A: This will begin this year and we hope to release more information on time frames very soon. Once more information is available we will bring an update to this forum

**Q: Why have black start costs spiked so high in the last reported month?**

A: These are capital contributions agreed for new providers of Black Start services awarded as part of the tenders for the South West, Midlands and Northern Regions. These can come in at anytime and when they appear is based on when they are receipted and processed. This results in the situation where some months the cost is zero and in other months multiple millions.

**Q: On 29th July, the system inertia was consistently lower than 140 GVA.s between SP 2-13. FRCR sets 140 as the minimum inertia level, it seems the recommendations are not binding? What are the implications if the inertia outturns below 140?**

A: Thank you for raising this with us. We are looking into this and have identified that there is a data discrepancy between the information available to the control room in real time and that published on the data portal. We can confirm that the inertia level is visible to the control room and they will take action to secure in real time.

**Q: 125MW being unavailable out of 800MW of DC contracted during the event seems a high amount. Is this typically observed, or was this a particularly unlikely time for the frequency event?**

A: Providers have the option to bid into a range of ancillary services as well as the wholesale market. The DC volumes are affected by the system prices which may occasionally lead to more withdrawals from the DC market. This does not affect the system risk under current frequency management policy.

## Future forum topics

**While we want to remain flexible to provide insight on operational challenges when they happen, we appreciate you want to know when we will cover topics.**

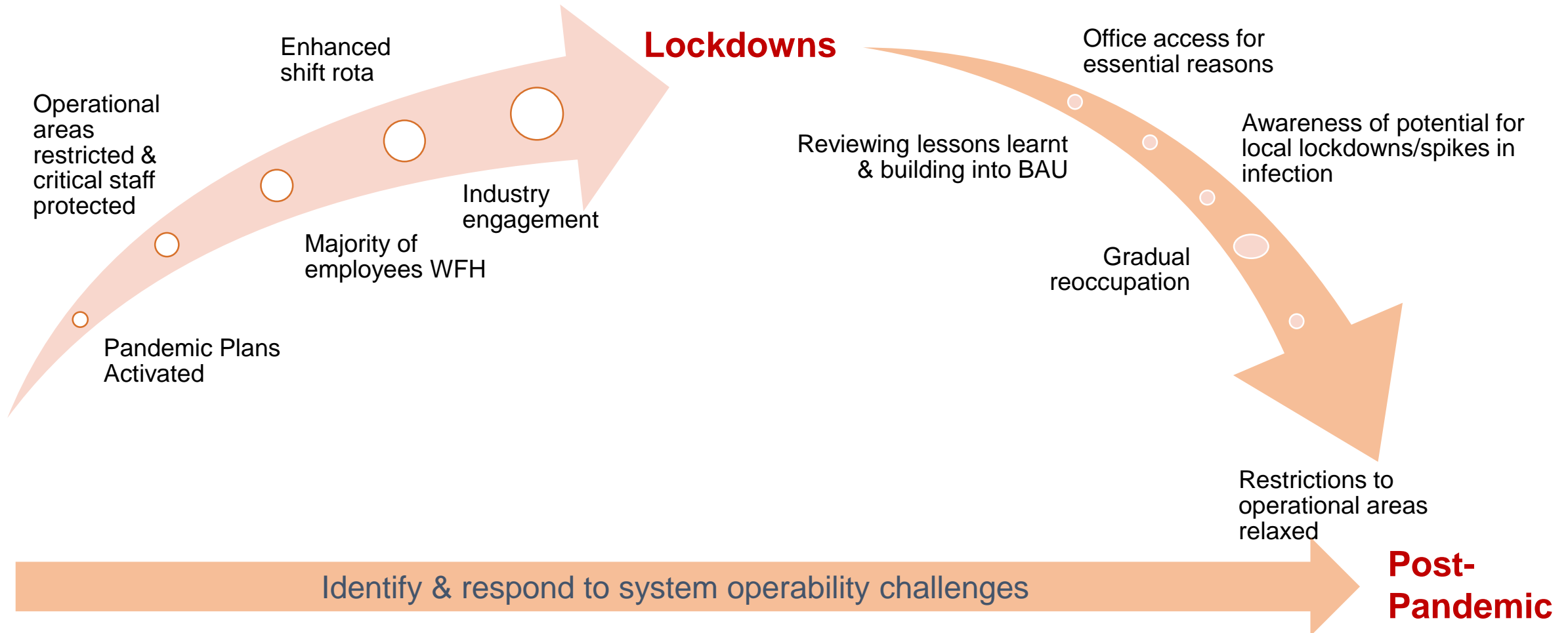
**In response to questions and asks from previous weeks, we have the following deep dives planned in:**

Thermal Constraint costs and Network Options Assessment (NOA) deep dive 18 Aug

**You have also requested the following:**

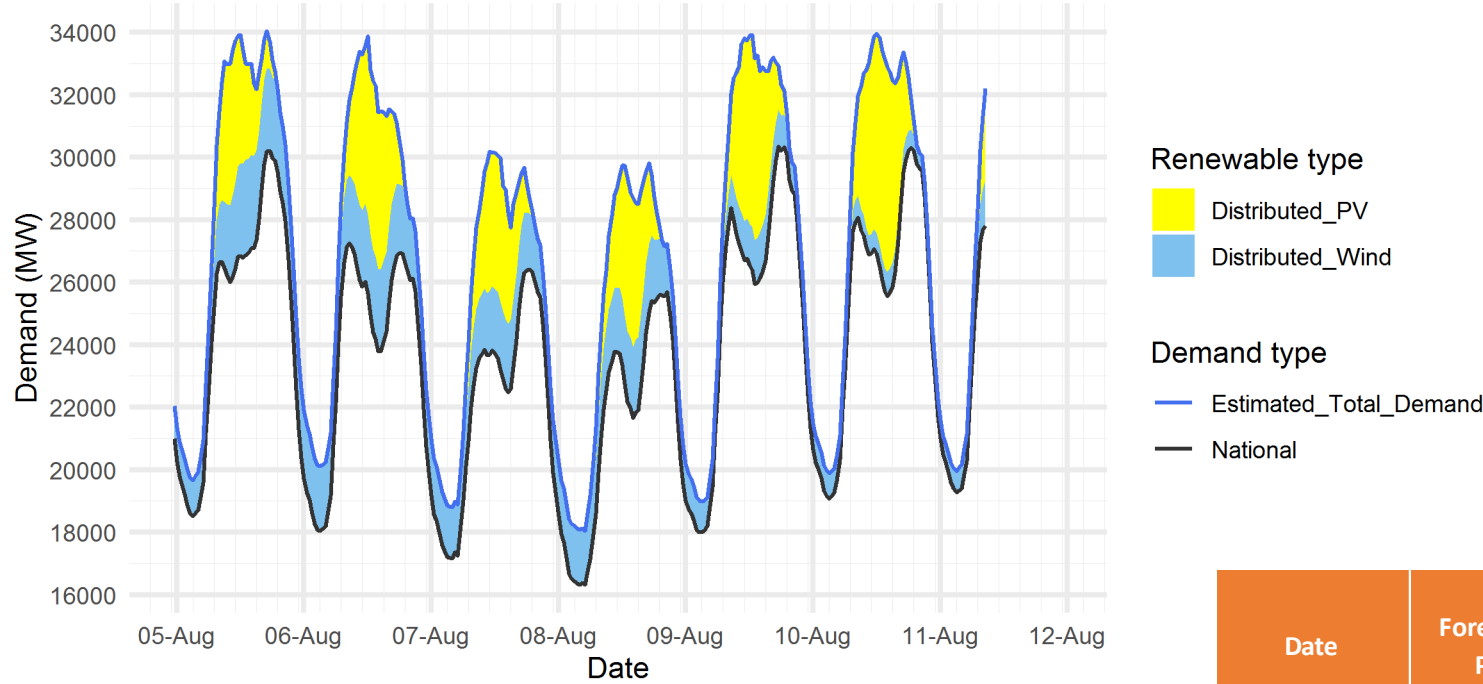
Dynamic Containment including utilization and contracting which will be covered through the DC webinar  
Stability pathfinder update

# Protecting critical staff to maintain critical operations



# Demand | Last 7 days outturn

ESO National Demand outturn 05-11 August 2021



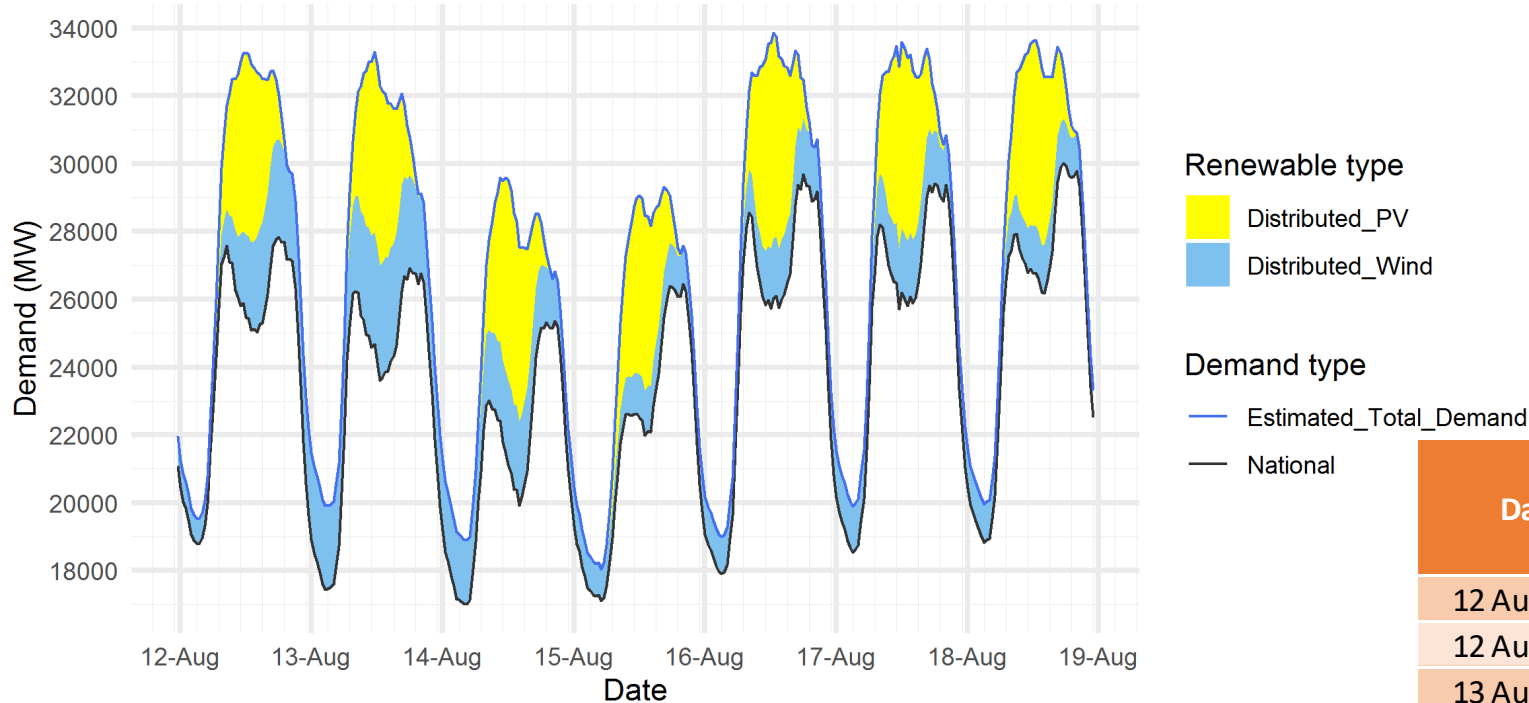
The black line (National Demand) is the measure of portion of total GB customer demand that is supplied by the transmission network.

Blue line serves as a proxy for total GB customer demand. It includes demand supplied by the distributed wind and solar sources, but it does not include demand supplied by non-weather driven sources at the distributed network for which ESO has no real time data.

| Date        | Forecasting Point | FORECAST (Wed 04 Aug) |                 |               | OUTTURN              |                 |               |
|-------------|-------------------|-----------------------|-----------------|---------------|----------------------|-----------------|---------------|
|             |                   | National Demand (GW)  | Dist. wind (GW) | Dist. PV (GW) | National Demand (GW) | Dist. wind (GW) | Dist. PV (GW) |
| 04 Aug 2021 | Afternoon Min     | 24.9                  | 0.8             | 7.1           | 25.1                 | 0.8             | 7.1           |
| 05 Aug 2021 | Overnight Min     | 18.3                  | 1.0             | 0.0           | 18.5                 | 1.1             | 0.0           |
| 05 Aug 2021 | Afternoon Min     | 27.5                  | 2.3             | 3.0           | 26.8                 | 3.0             | 3.6           |
| 06 Aug 2021 | Overnight Min     | 18.0                  | 1.9             | 0.0           | 18.1                 | 2.1             | 0.0           |
| 06 Aug 2021 | Afternoon Min     | 24.0                  | 2.4             | 5.6           | 23.8                 | 2.7             | 5.0           |
| 07 Aug 2021 | Overnight Min     | 17.3                  | 1.5             | 0.0           | 17.2                 | 1.6             | 0.0           |
| 07 Aug 2021 | Afternoon Min     | 20.6                  | 2.0             | 5.5           | 22.5                 | 2.2             | 3.6           |
| 08 Aug 2021 | Overnight Min     | 16.2                  | 1.5             | 0.1           | 16.3                 | 1.7             | 0.0           |
| 08 Aug 2021 | Afternoon Min     | 20.7                  | 2.1             | 5.0           | 21.6                 | 2.3             | 4.8           |
| 09 Aug 2021 | Overnight Min     | 17.6                  | 1.1             | 0.0           | 18.0                 | 1.0             | 0.0           |
| 09 Aug 2021 | Afternoon Min     | 26.1                  | 1.2             | 5.4           | 25.9                 | 1.4             | 5.3           |
| 10 Aug 2021 | Overnight Min     | 18.8                  | 0.9             | 0.0           | 19.1                 | 0.8             | 0.0           |

# Demand | Week Ahead

ESO Demand forecast for 12-18 August 2021



The black line (National Demand) is the measure of portion of total GB customer demand that is supplied by the transmission network.

Blue line serves as a proxy for total GB customer demand. It includes demand supplied by the distributed wind and solar sources, but it does not include demand supplied by non-weather driven sources at the distributed network for which ESO has no real time data.

|             |                   | FORECAST (Wed 11 Aug) |                 |               |
|-------------|-------------------|-----------------------|-----------------|---------------|
| Date        | Forecasting Point | National Demand (GW)  | Dist. wind (GW) | Dist. PV (GW) |
| 12 Aug 2021 | Overnight Min     | 18.8                  | 0.7             | 0.0           |
| 12 Aug 2021 | Afternoon Min     | 25.0                  | 2.8             | 4.8           |
| 13 Aug 2021 | Overnight Min     | 17.4                  | 2.5             | 0.0           |
| 13 Aug 2021 | Afternoon Min     | 23.6                  | 3.4             | 5.3           |
| 14 Aug 2021 | Overnight Min     | 17.0                  | 1.9             | 0.0           |
| 14 Aug 2021 | Afternoon Min     | 19.9                  | 2.5             | 5.2           |
| 15 Aug 2021 | Overnight Min     | 17.1                  | 0.9             | 0.0           |
| 15 Aug 2021 | Afternoon Min     | 22.0                  | 1.3             | 5.2           |
| 16 Aug 2021 | Overnight Min     | 17.9                  | 1.1             | 0.0           |
| 16 Aug 2021 | Afternoon Min     | 25.7                  | 1.8             | 5.7           |
| 17 Aug 2021 | Overnight Min     | 18.5                  | 1.4             | 0.0           |
| 17 Aug 2021 | Afternoon Min     | 25.8                  | 1.9             | 5.4           |
| 18 Aug 2021 | Overnight Min     | 18.8                  | 1.1             | 0.0           |
| 18 Aug 2021 | Afternoon Min     | 26.2                  | 1.4             | 5.0           |

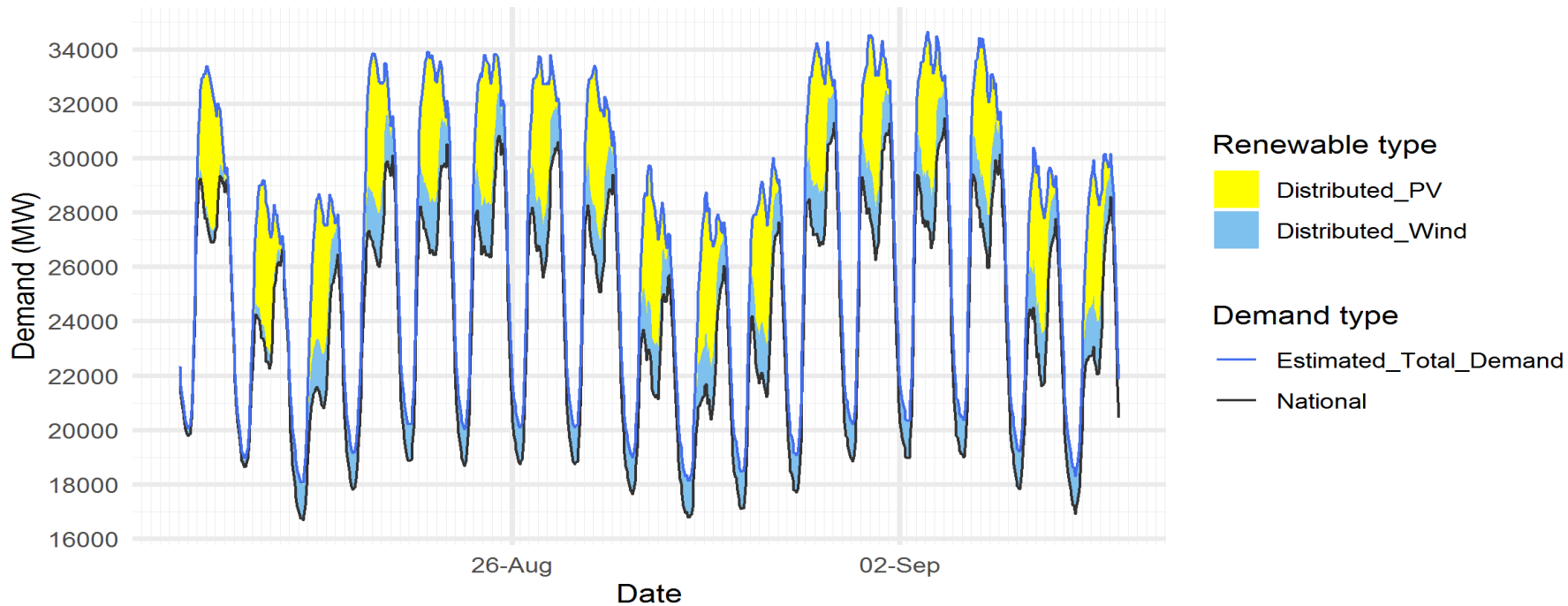
# Demand | Forecast up to Sunday 5<sup>th</sup> September

## At this stage forecast uses seasonal average weather

The black line (National Demand) is the measure of portion of total GB customer demand that is supplied by the transmission network.

Blue line serves as a proxy for total GB customer demand. It includes demand supplied by the distributed wind and solar sources, but it does not include demand supplied by non-weather driven sources at the distributed network for which ESO has no real time data.

ESO Demand forecast for 20 August-05 September 2021



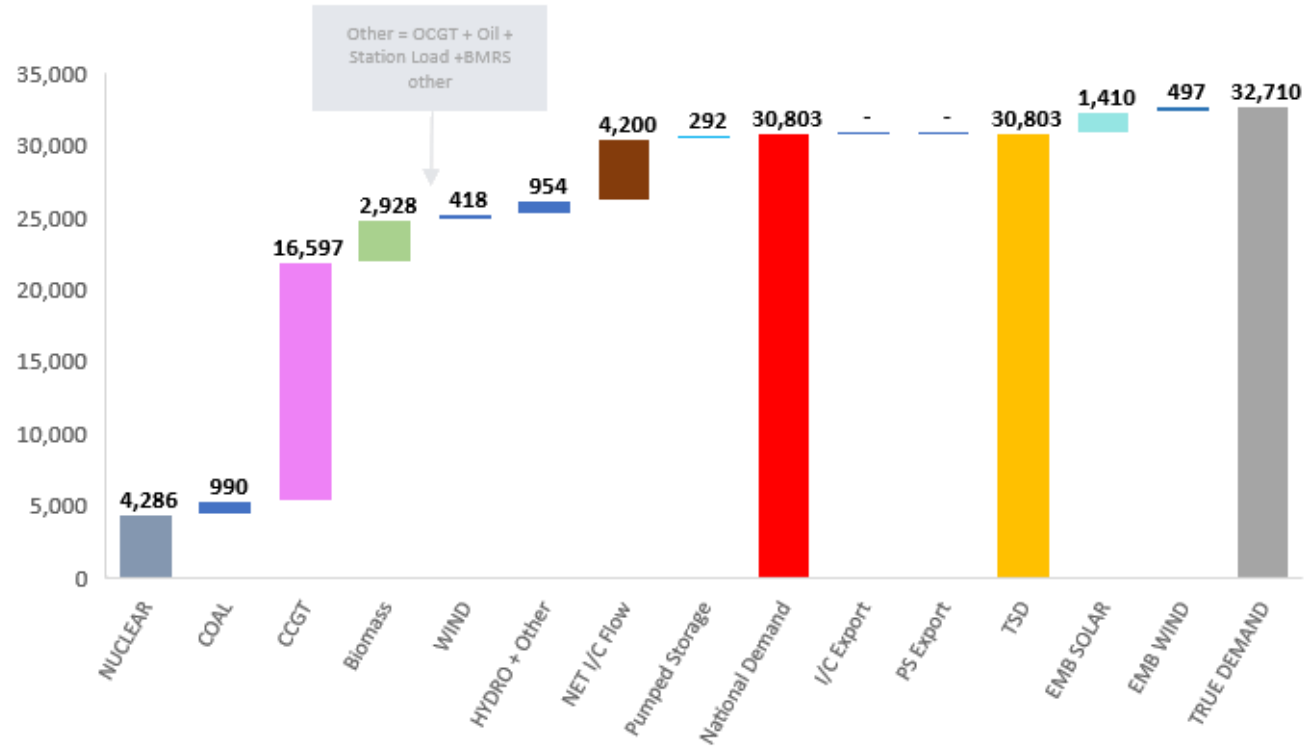
| Date        | Forecasting Point | National Demand (GW) |
|-------------|-------------------|----------------------|
| 20 Aug 2021 | Overnight Min     | 19.8                 |
| 20 Aug 2021 | Afternoon Min     | 26.9                 |
| 21 Aug 2021 | Overnight Min     | 18.7                 |
| 21 Aug 2021 | Afternoon Min     | 22.3                 |
| 22 Aug 2021 | Overnight Min     | 16.7                 |
| 22 Aug 2021 | Afternoon Min     | 20.8                 |
| 23 Aug 2021 | Overnight Min     | 17.8                 |
| 23 Aug 2021 | Afternoon Min     | 26.0                 |
| 24 Aug 2021 | Overnight Min     | 18.9                 |
| 24 Aug 2021 | Afternoon Min     | 26.4                 |
| 25 Aug 2021 | Overnight Min     | 18.7                 |
| 25 Aug 2021 | Afternoon Min     | 26.4                 |
| 26 Aug 2021 | Overnight Min     | 18.8                 |
| 26 Aug 2021 | Afternoon Min     | 25.6                 |
| 27 Aug 2021 | Overnight Min     | 18.8                 |
| 27 Aug 2021 | Afternoon Min     | 25.1                 |
| 28 Aug 2021 | Overnight Min     | 17.6                 |
| 28 Aug 2021 | Afternoon Min     | 21.1                 |
| 29 Aug 2021 | Overnight Min     | 16.8                 |
| 29 Aug 2021 | Afternoon Min     | 20.4                 |
| 30 Aug 2021 | Overnight Min     | 17.1                 |
| 30 Aug 2021 | Afternoon Min     | 21.2                 |
| 31 Aug 2021 | Overnight Min     | 17.7                 |
| 31 Aug 2021 | Afternoon Min     | 26.8                 |
| 01 Sep 2021 | Overnight Min     | 18.9                 |
| 01 Sep 2021 | Afternoon Min     | 26.3                 |
| 02 Sep 2021 | Overnight Min     | 19.0                 |
| 02 Sep 2021 | Afternoon Min     | 26.7                 |
| 03 Sep 2021 | Overnight Min     | 19.0                 |
| 03 Sep 2021 | Afternoon Min     | 26.0                 |
| 04 Sep 2021 | Overnight Min     | 17.8                 |
| 04 Sep 2021 | Afternoon Min     | 21.6                 |
| 05 Sep 2021 | Overnight Min     | 16.9                 |
| 05 Sep 2021 | Afternoon Min     | 22.0                 |



# ESO Actions | Monday 2 August Peak

Date: 02/08/2021

SP: 37

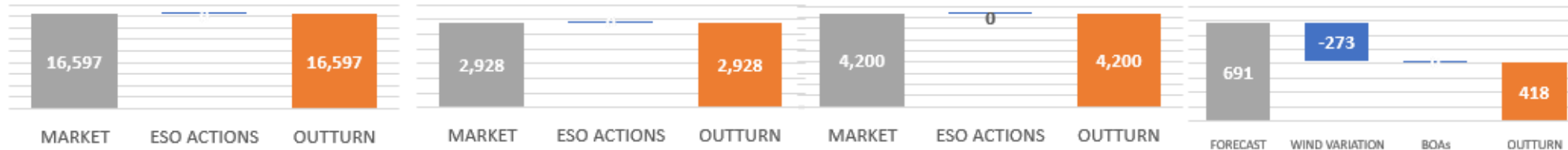


CCGT

Biomass

I/C

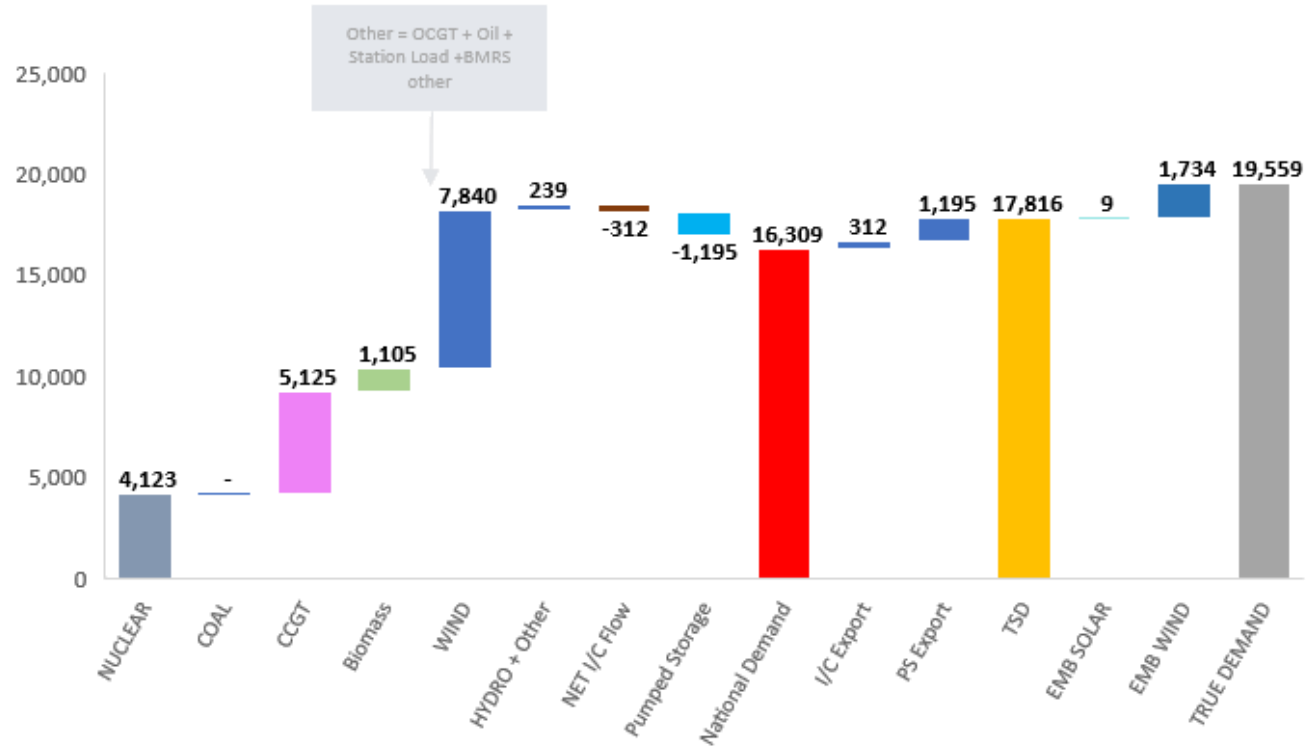
WIND



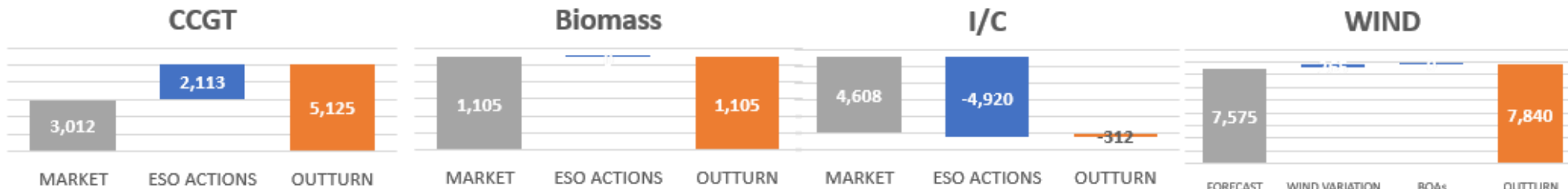
# ESO Actions | Sunday 8 August Minimum

Date: 08/08/2021

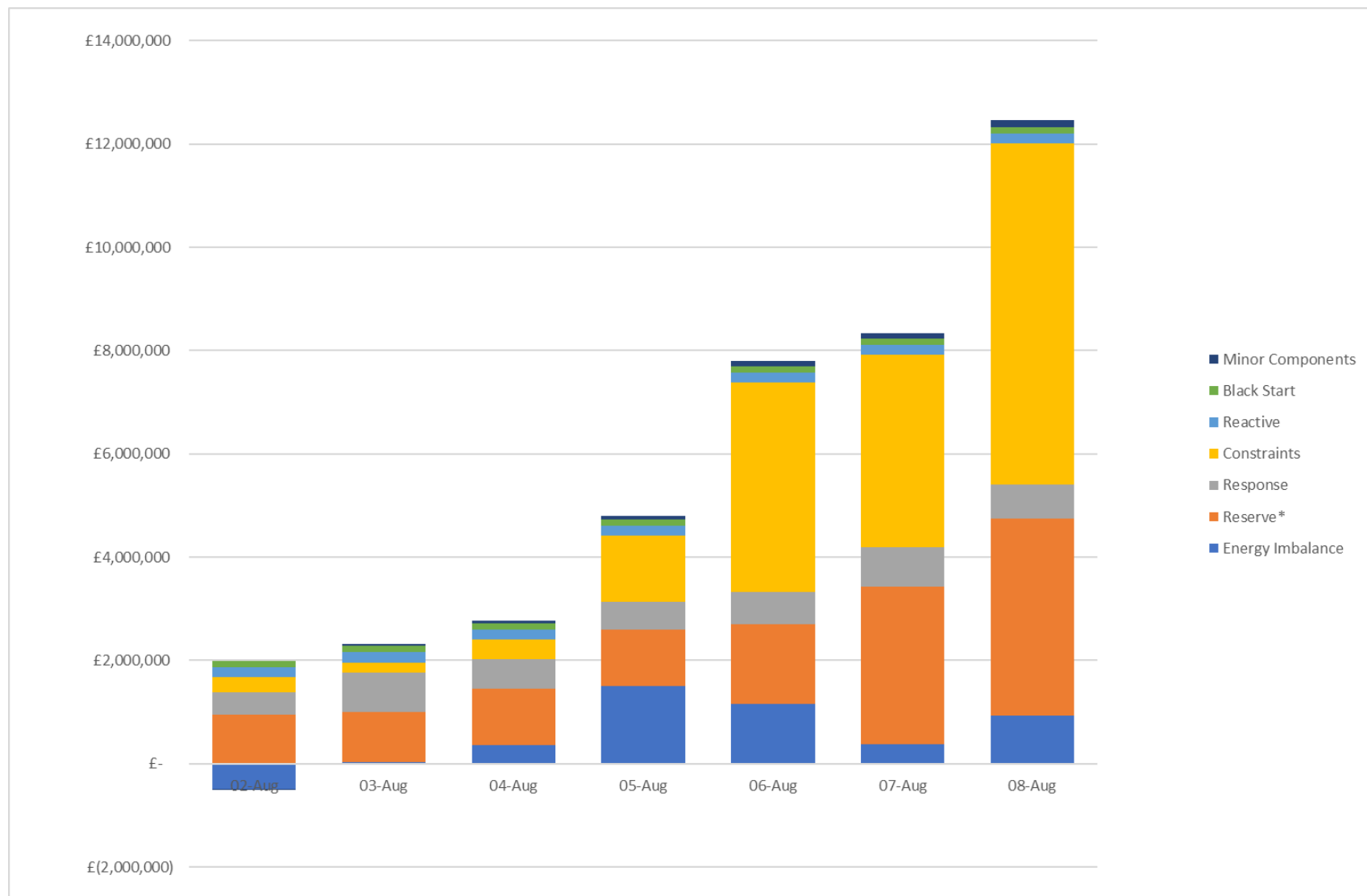
SP: 12



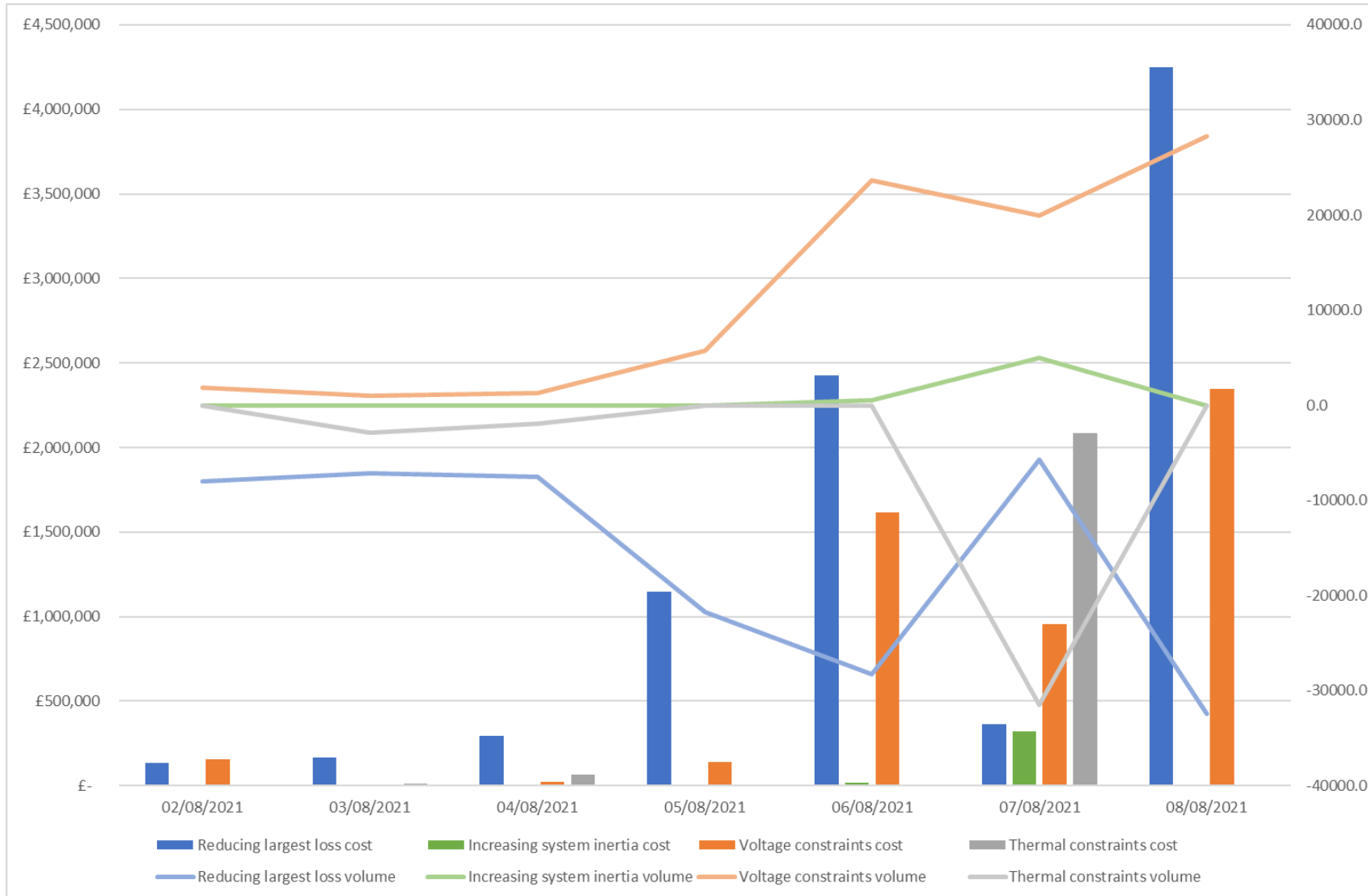
Other = OCGT + Oil + Station Load + BMRS other



## Transparency | Costs for the last week



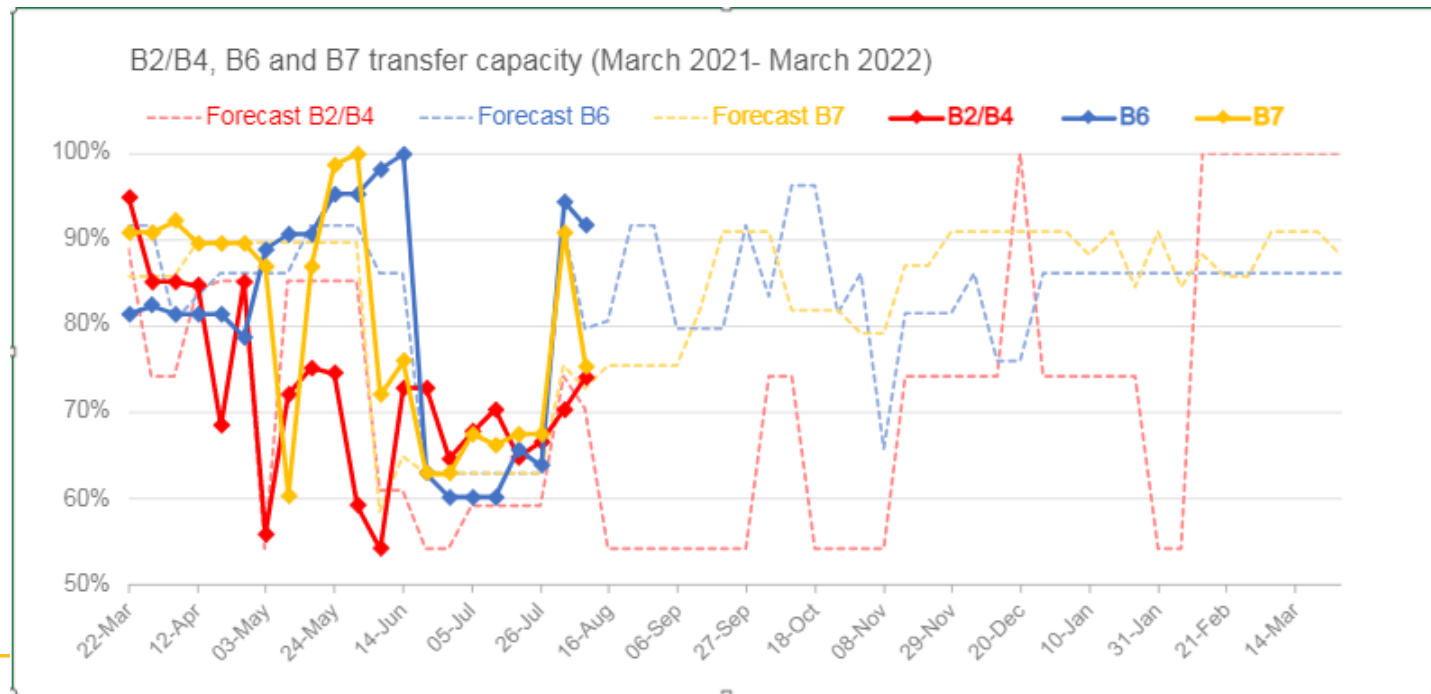
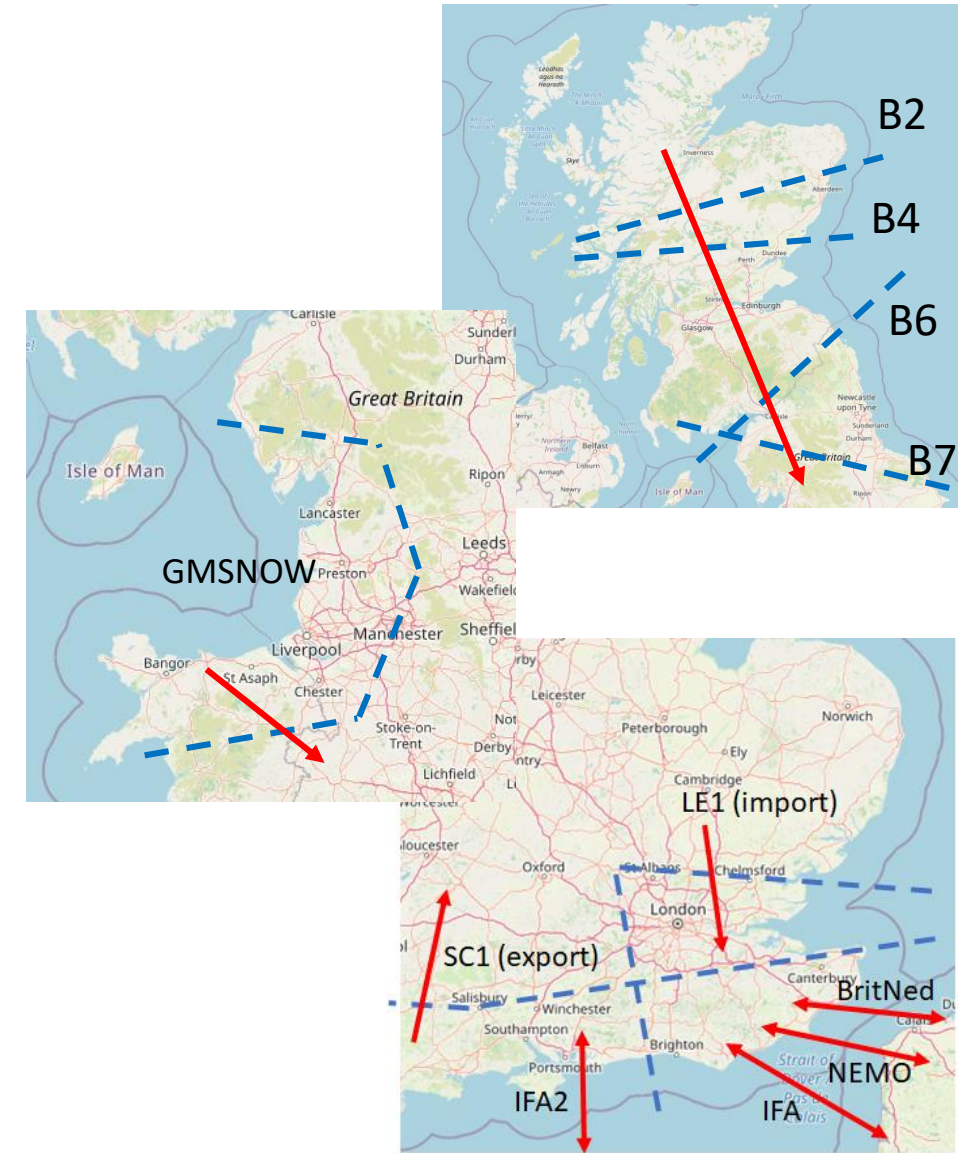
# Transparency | Constraint cost breakdown



<https://data.nationalgrideso.com/balancing/constraint-breakdown>

# Transparency | Constraint Capacity

|                                   | 26-Jul | 2-Aug | 9-Aug | 16-Aug | 23-Aug | 30-Aug | 6-Sep | 13-Sep | 20-Sept | 27-Sep |
|-----------------------------------|--------|-------|-------|--------|--------|--------|-------|--------|---------|--------|
| Scotland<br>B6 (SCOTEX)           | Blue   | Blue  | Blue  | Blue   | Blue   | Blue   | Blue  | Blue   | Blue    | Blue   |
| B2/B4 (SSE SP2)                   | Blue   | Blue  | Blue  | Blue   | Blue   | Blue   | Blue  | Blue   | Blue    | Blue   |
| England and Wales<br>B7 (SSHARN3) | Blue   | Blue  | Blue  | Blue   | Blue   | Blue   | Blue  | Blue   | Blue    | Blue   |
| (GM SNOW)                         | Blue   | Blue  | Blue  | Blue   | Blue   | Blue   | Blue  | Blue   | Blue    | Blue   |
| SC1 (SCOAST3EX)                   | Blue   | Blue  | Blue  | Blue   | Blue   | Blue   | Blue  | Blue   | Blue    | Blue   |
| Long term view                    | Blue   | Blue  | Blue  | Blue   | Blue   | Blue   | Blue  | Blue   | Blue    | Blue   |



# Energy Trading – Data Transparency

## Trading Data Transparency Survey

Data transparency survey is now live - [https://nationalgrideso.fra1.qualtrics.com/jfe/form/SV\\_5vx5DW4sjB5MtMi](https://nationalgrideso.fra1.qualtrics.com/jfe/form/SV_5vx5DW4sjB5MtMi)

The survey feedback will support our ambition to continuously improve the data in which we are providing to industry to ensure all our actions are transparent to the market. The survey may also provide you with insight into further information that we are publishing. We encourage you to complete the survey as soon as possible and please forward onto any teams within your business who would like to provide feedback.

## Decommissioning of existing trade reporting website

Due to the work that has been completed on the NGESO data portal the upcoming trades weblink <https://trades.nationalgrideso.com/> will be decommissioned in October. This information can now be found on the NGESO data portal with a whole host of other data sets.

**Data Portal** <https://data.nationalgrideso.com/>.

# Dynamic Containment – Procurement changes

## Mock auction review webinar

We received a number of questions on the September Market Information Report published recently on the Data Portal and shared at the OTF last week. We have listened to the feedback and agree that a longer transition to more granular requirements is necessary. We will therefore continue to procure within the ranges specified in the August MIR whilst we develop a transition plan.

Therefore, the remit of the webinar has been expanded to cover DC volume requirements as well as reviewing the mock auction and details regarding the onboarding process.

Please feel free to send any questions prior to the webinar that you may have to [box.futureofbalancingservices@nationalgrideso.com](mailto:box.futureofbalancingservices@nationalgrideso.com) with the email titled **DC procurement changes - mock auction question**.

If you have any general questions regarding Dynamic Containment, please contact your account manager or the team at: [box.futureofbalancingservices@nationalgrideso.com](mailto:box.futureofbalancingservices@nationalgrideso.com)

**Tuesday 17 August | 11:00am**

Join on your computer or mobile app

[Click here to join the meeting](#)

**Or call in (audio only)**

[+44 20 3443 6278](tel:+442034436278) United Kingdom, London

Phone Conference ID: 363 702 204#

This information was communicated by email on 6 August.  
To ensure you stay informed of any future of balancing services updates please sign up:  
<https://www.nationalgrideso.com/industry-information/balancing-services/frequency-response-services/dynamic-containment>

## Q&A

**After the webinar, you will receive a link to a survey. We welcome feedback to understand what we are doing well and how we can improve the event ongoing.**

Please ask any questions via Slido (code #OTF) and we will try to answer as many as possible now. If we are unable to answer your question today, then we will take it away and answer it at a later webinar.

Please continue to use your normal communication channels with ESO.

If you have any questions after the event, please contact the following email address:  
[box.NC.Customer@nationalgrideso.com](mailto:box.NC.Customer@nationalgrideso.com)



slido

# Audience Q&A Session

 Start presenting to display the audience questions on this slide.

## Q&A

**Please remember to use the feedback poll after the event. We welcome feedback to understand what we are doing well and how we can improve the event ongoing.**

If you have any questions after the event, please contact the following email address or your normal communication method with the ESO: [box.NC.Customer@nationalgrideso.com](mailto:box.NC.Customer@nationalgrideso.com)

