



# ESO Coronavirus Preparedness

22<sup>nd</sup> July 2020

nationalgrid**ESO**

# Introduction

Please ask any questions via the Q&A section in Webex and we will pick them all up at the end of the session and answer those now which we can. We may have to take away some questions and provide feedback from our expert colleagues in these areas.

These slides, event recordings and further information about the webinars can be found at the following location:

[data.nationalgrideso.com/plans-reports-analysis/covid-19-preparedness-materials](https://data.nationalgrideso.com/plans-reports-analysis/covid-19-preparedness-materials)

## Transparency

On the ODFM, is the ABSVD provided by NGENSO to the electricity supplier?

We send ABSVD data to Elexon, if there are any specific concerns, please send them to the usual .box

Brexit

Arenko Trial has started this morning

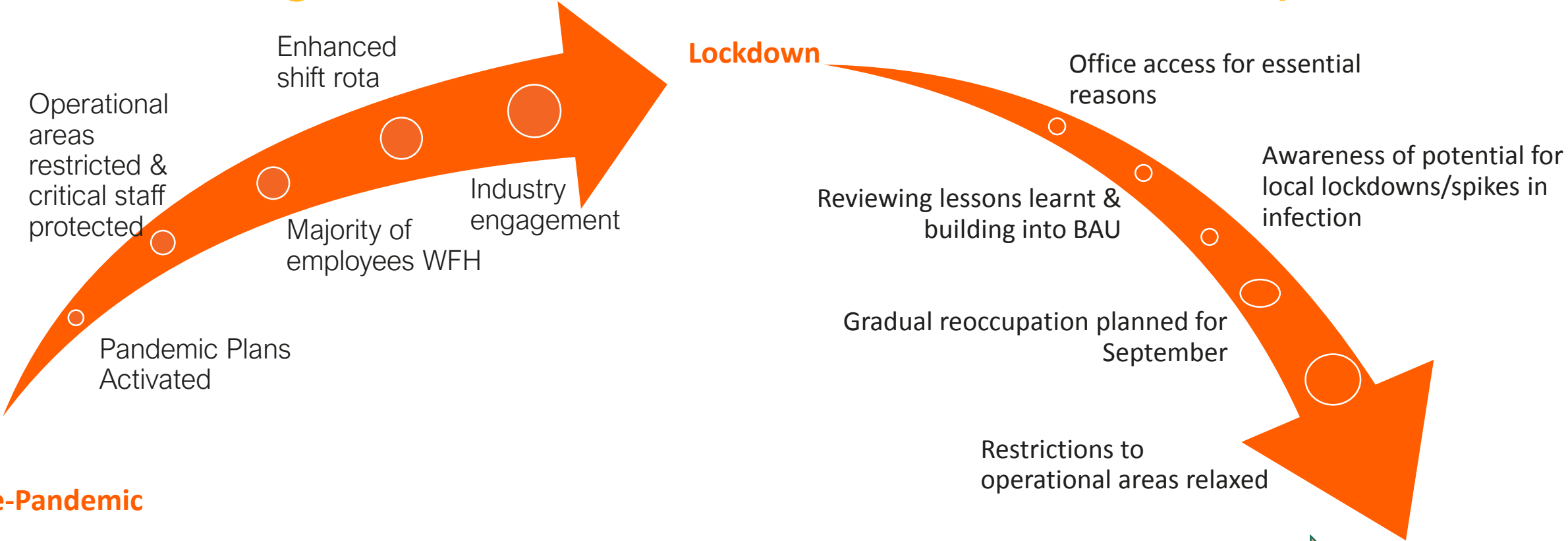
## Key topics for this week:

Relative demand change since lockdown

National Electricity Demand outturn and forecast

Forward Plan Update

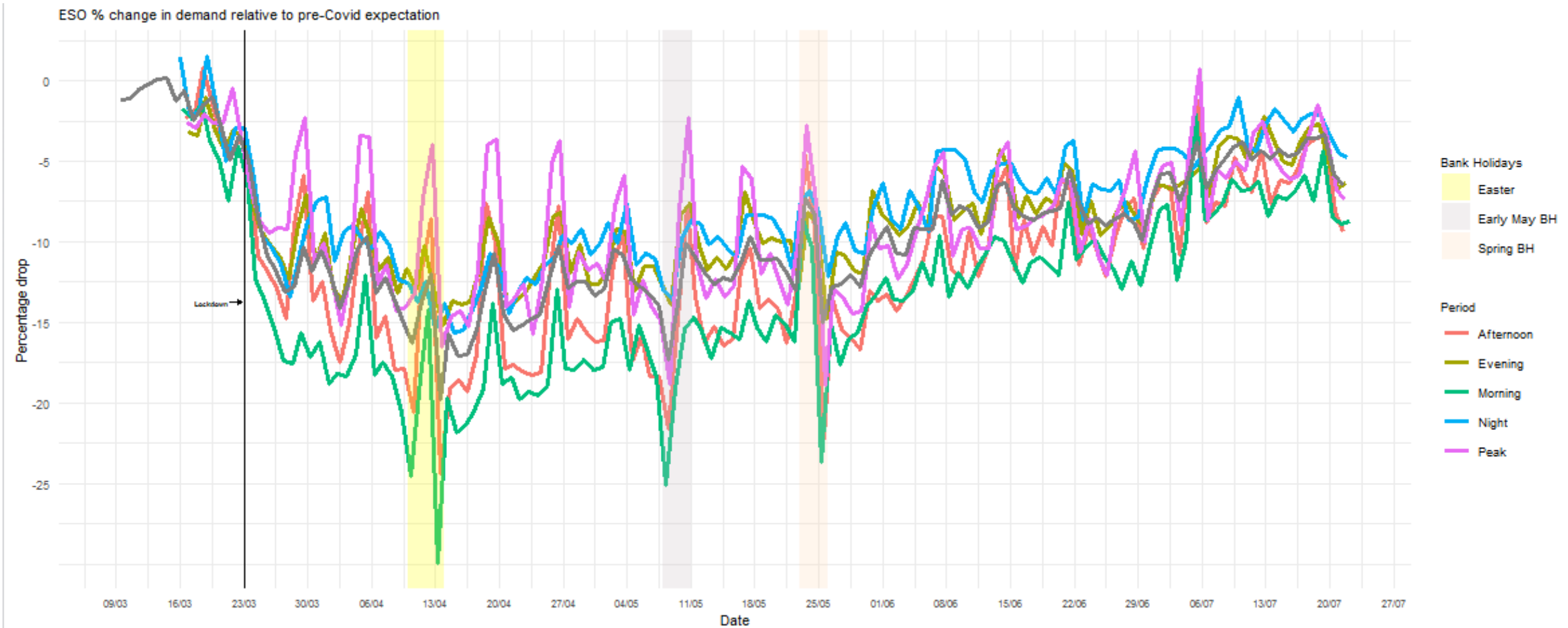
# Protecting Critical Staff to maintain Critical Operations



Identify & respond to system operability challenges



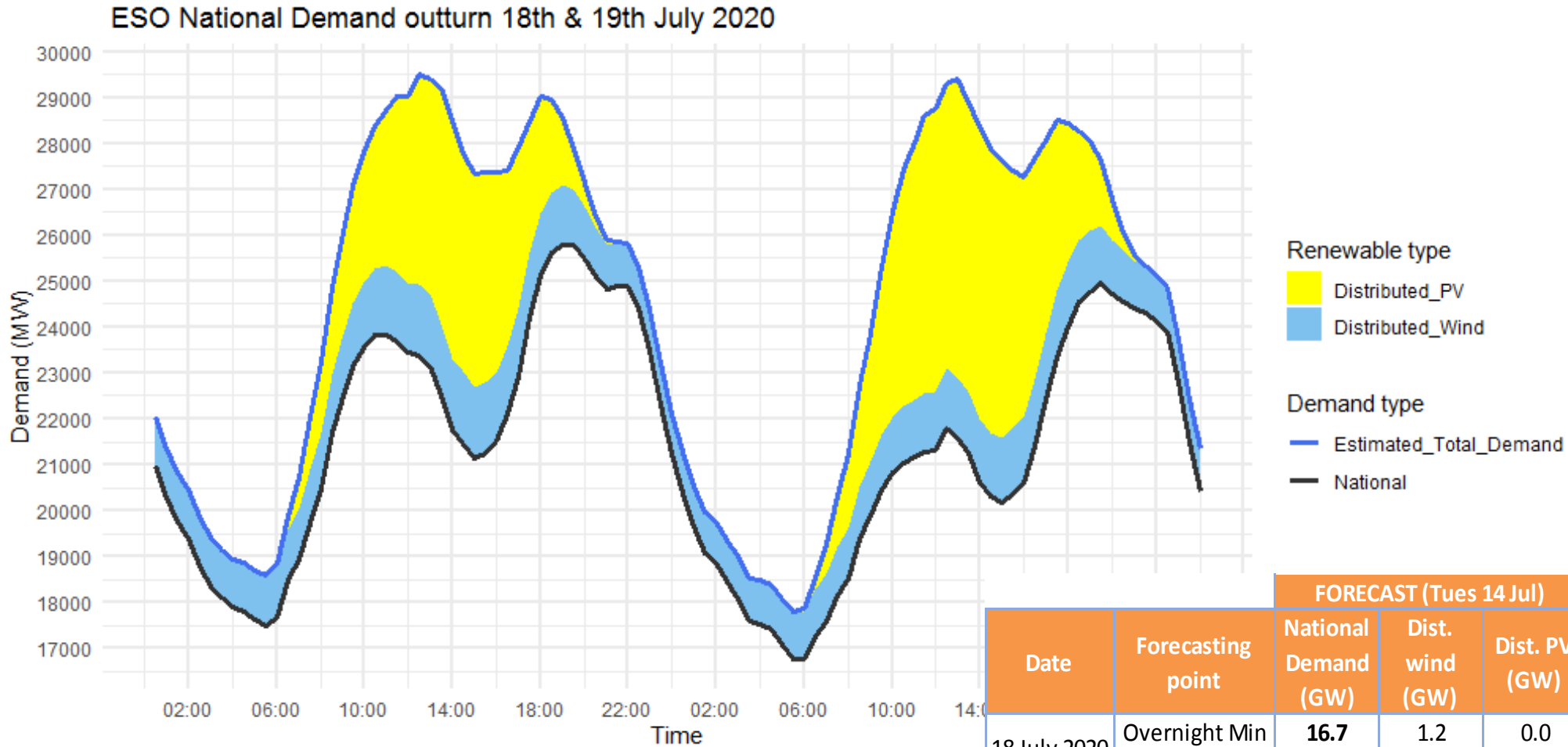
# ESO % change in demand relative to pre COVID



The 7-day rolling overall demand reduction is **5.1%**

Compared to last week: **5.1%**, two weeks ago: **6.2%** and the middle of June: **8.6%**

# Demand | Last Weekend Outturn

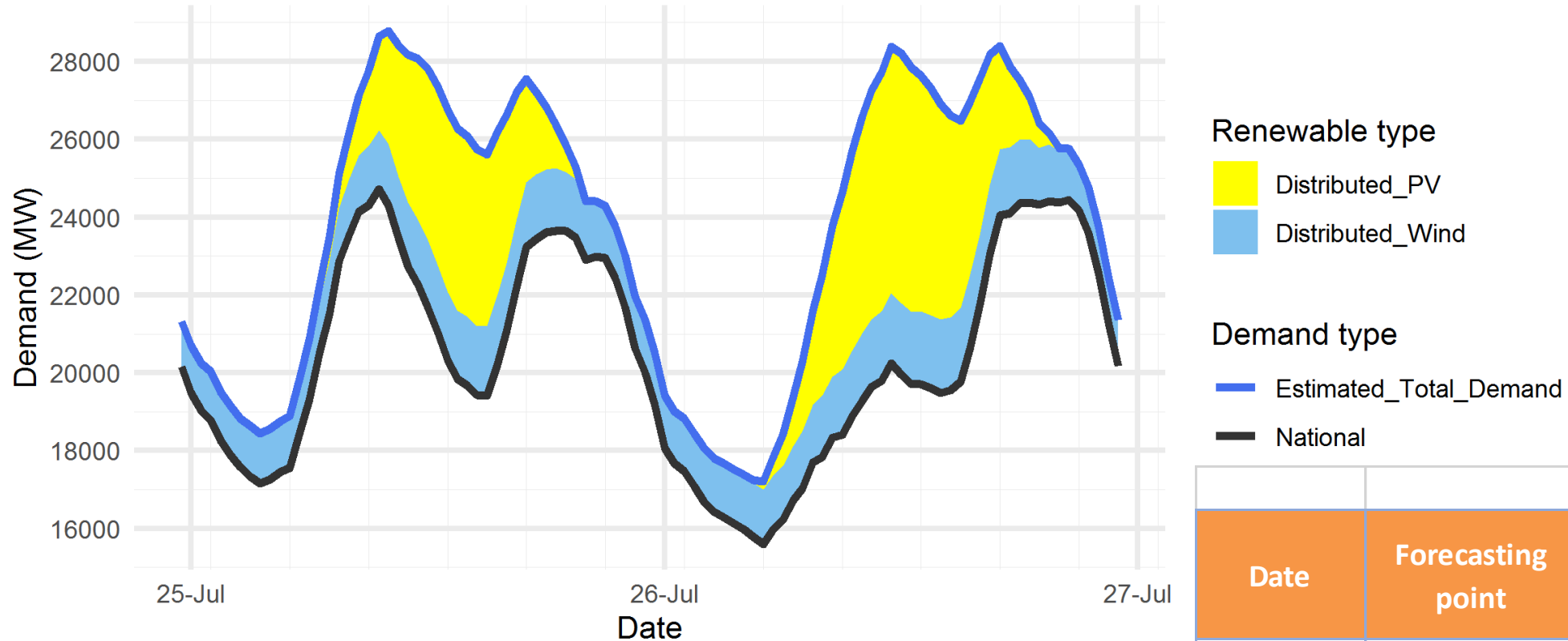


Date	Forecasting point	FORECAST (Tues 14 Jul)			OUTTURN		
		National Demand (GW)	Dist. wind (GW)	Dist. PV (GW)	National Demand (GW)	Dist. wind (GW)	Dist. PV (GW)
18 July 2020	Overnight Min	<b>16.7</b>	1.2	0.0	<b>17.5</b>	1.1	0.0
	Afternoon Min	<b>19.4</b>	1.7	5.4	<b>21.1</b>	1.6	4.7
19 July 2020	Overnight Min	<b>16.4</b>	0.9	0.3	<b>16.8</b>	1.0	0.0
	Afternoon Min	<b>20.1</b>	1.1	6.3	<b>20.2</b>	1.4	6.1

# Demand | Forecast for this Weekend

ESO Demand forecast 25th & 26th July 2020

based on the current government policies in relation to the pandemic and on the latest weather forecast



Renewable type

- Distributed\_PV
- Distributed\_Wind

Demand type

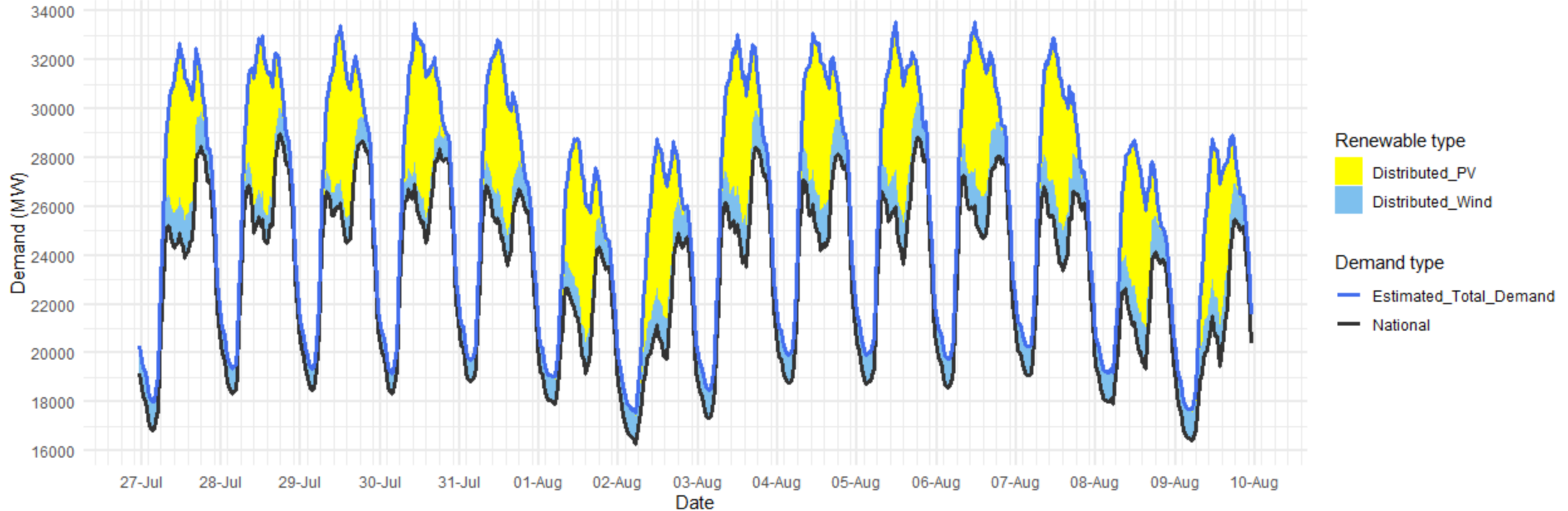
- Estimated\_Total\_Demand
- National

		FORECAST (Wed 22 Jul)		
Date	Forecasting point	National Demand (GW)	Dist. wind (GW)	Dist. PV (GW)
25 July 2020	Overnight Min	<b>17.2</b>	1.3	0.0
	Afternoon Min	<b>19.4</b>	1.8	4.4
26 July 2020	Overnight Min	<b>15.6</b>	1.4	0.2
	Afternoon Min	<b>19.5</b>	1.9	5.5

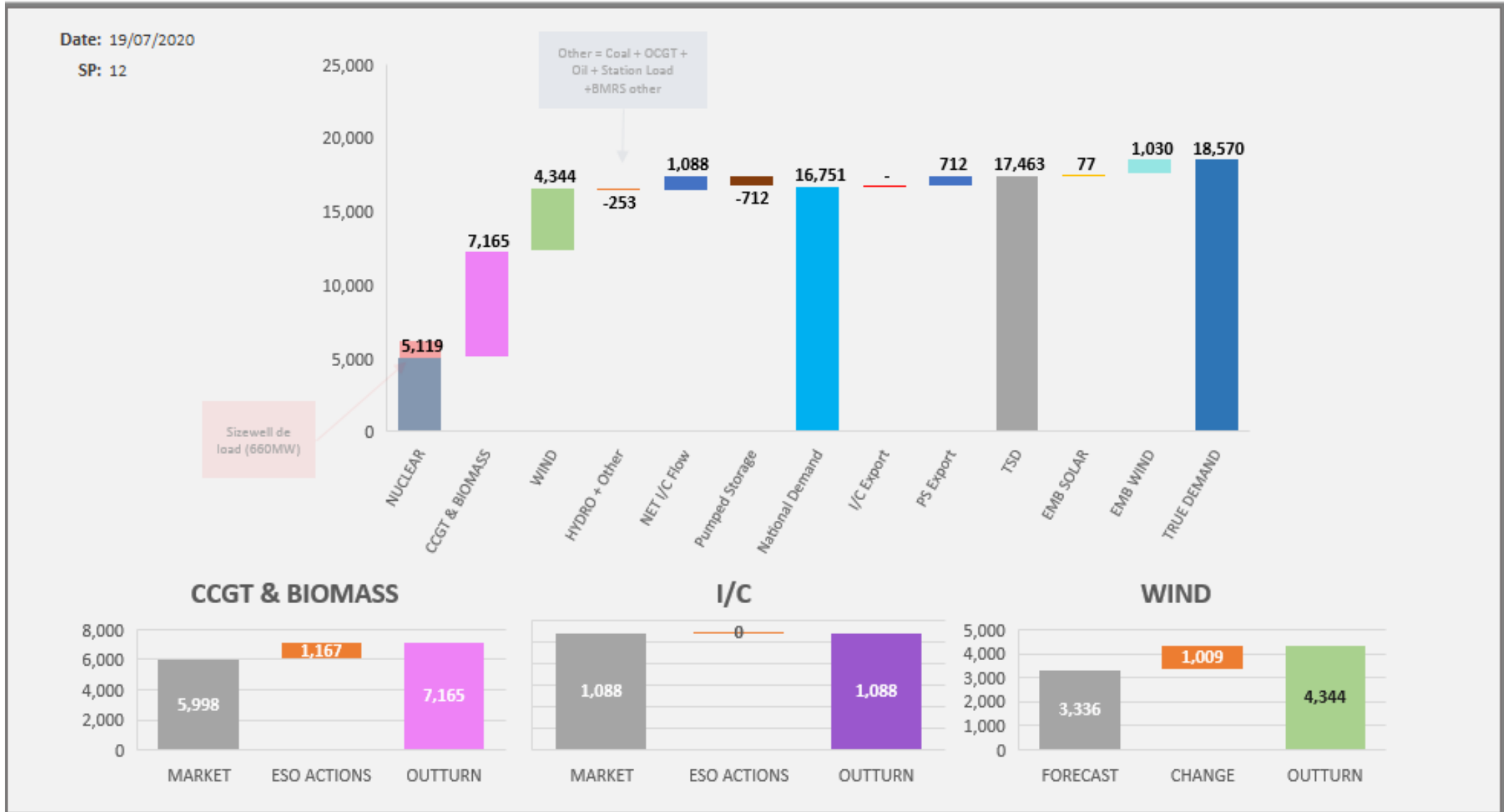
# Demand | Longer-term Forecast

ESO Demand forecast 27th July to 9th August 2020

based on the current government policies in relation to the pandemic and on the latest weather forecast



# ESO Actions | 19<sup>th</sup> July





# Transparency | ESO Forward Plan

NGESO have published an addendum to the Forward Plan to take account of the impact of Covid-19, see below:

<https://www.nationalgrideso.com/document/173131/download>

Following this, we have published the first Quarterly Report for The ESO 2020-21 Forward Plan

Please see the following link:

<https://www.nationalgrideso.com/our-strategy/forward-plan/how-were-performing>

# Q&A

**After the webinar, you will receive a link to a survey. We welcome feedback to understand what we are doing well and how we can improve the event ongoing.**

Please ask any questions via the Q&A section in Webex and we will try to answer as many as possible now

Please continue to use your normal communication channels with ESO

If you have any questions after the event, please contact the following email address:

**[box.NC.Customer@nationalgrid.com](mailto:box.NC.Customer@nationalgrid.com)**

