

Geospatial Datasets on York Open Data – Maps

York Open Data (YOD - www.yorkopendata.org) contains 100+ geospatial datasets which are published through a live API link to City of York Council's internal GIS (Geographic Information Systems) server. Any changes made to the internal master copy of the data will be immediately reflected in the resources within the GIS datasets on YOD*.

Most of the GIS datasets on YOD are published under 4 different file formats: CSV, KML, GeoJSON and Shapefile

The screenshot shows the 'Brownfield Land Register' dataset page on the York Open Data website. On the left, there is a 'Topics' sidebar with icons for Environment, Housing, Planning, and Transparency. Below this is a 'Licence' section for OGL-UK-3.0. The main content area features a 'Description' section with text explaining that in 2017, the Secretary of State introduced requirements for local planning authorities to maintain registers of brownfield land. It also lists planning permissions for Part 1 sites and suitability for Part 2 sites. A note mentions that the data is a live API link to the City of York Council's GIS server. The 'Resources' section at the bottom offers four download options: CSV Spreadsheet, KML XML, GeoJSON, and Shapefile, each with a red 'EXPLORE' button.

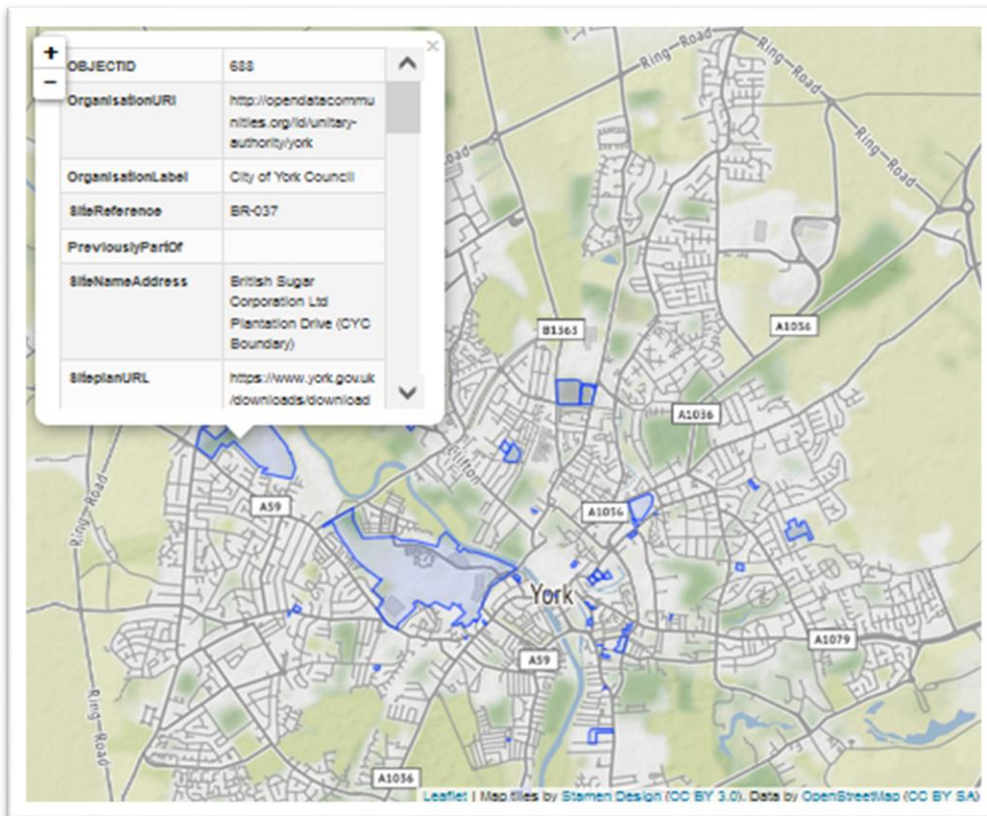
Example of <https://data.yorkopendata.org/dataset/brownfield-land-register>

All the file formats are available for **downloading** by clicking on the red “EXPLORE” button > “DOWLOAD”

- **CSV:** a spreadsheet-like document **suitable for most users** that allows to browse and filter the data. Usually opened with an office-type software (Microsoft Office, OpenOffice etc) If opening this file format with the mentioned tools the data won't be displayed on a map.
- **KML, GeoJSON, Shapefile:** geospatial file formats oriented at **more advanced users**. In order to use these file formats some GIS software is required (ArcGIS, QGIS etc)

It is possible to **preview** CSV, KML and GeoJSON formats for most datasets on YOD by clicking the red “EXPLORE” button > “PREVIEW”. Previewing KMLs and GeoJSONs in YOD will offer a **map view**.

**The date shown in the "Last Updated" field of each GIS resource reflects when the data was first published, and not when it was last updated as it is a live link.*



Example of GeoJSON map view for Brownfield Land Register

Please note that the content of some of the GIS resources is too big to be previewed efficiently within YOD and thus a working map won't be displayed. Please also be aware that these data are very demanding and, as such, the content may take a while to load when previewing it.

The whole list of geospatial datasets published on York Open Data can be found at https://data.yorkopendata.org/dataset?res_format=KML

For questions about GIS datasets on YOD or any other YOD related query, please email info@yorkopendata.org