

Topic: 2011 Census Briefing

Period: Census 2011 (1st Release July 16th 2012)

Introduction

This briefing provides headlines of the first release from the 2011 Census of population for England and Wales conducted by the Office for National Statistics (ONS). It provides a snapshot of the usually resident population as at Census Day, 27 March 2011 and various comparators used in the quality assurance process.

Information is provided on the usually resident population at national, regional, county and constituent Local Authority District and Unitary Authority level, by age and sex. The census population estimates are provided by five year age band below national level. Data contained within the pack are rounded to the nearest 100. There may be inconsistencies with comparator data published elsewhere because of rounding, disclosure control and processing to ensure consistency with census definitions.

Headlines for 2011 Census

Overall

- York's population for 2011 was **198,000**
- York's Household population for 2011 was **83,600**.
- In 2011 York has 16,700 (9.2%) more people than in 2001 when our last census took place which showed the population as 181,300. It is also 2.2% lower than previous predictions (mid year 2010).
- 20-24 year olds have increase the most since 2001 (by 5,500, 38.5%). Other significant increases are:
 - 60-64 (by 2,800, 31.5%) and 85+ (by 1,200, 32.4%)
- 30-34 and 35-39 year olds has decreased the most since 2001 (by 1,300 each, 9.4%). Other significant decreases are:
 - 10-14 (by 900, -8.5%) and 5-9 (by 400, -4.1%)

Male and Females

- York's male population for 2011 was **96,300** which is 10.4% more than 2001.
- York's female population for 2011 was **101,800** which was 8.2% more than 2001
- Male 85 and over age range has increased by 60% compared to only 18.5% with females.

Regional and National Comparisons

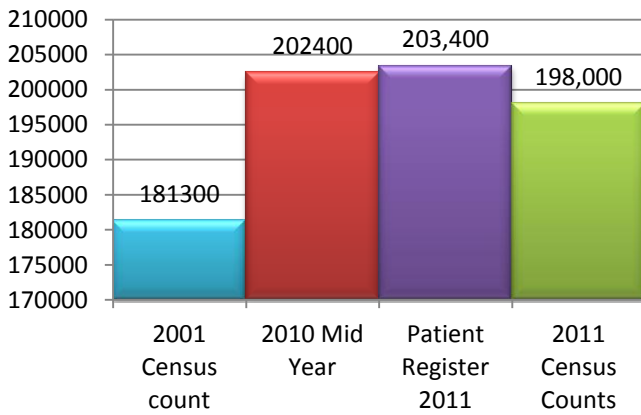
- York's population grew more than the Yorkshire and Humber and England. (9.2% compared to 6.2% and 7.2%)
- York's 20-24 year olds vary significantly from both the regional and national proportions at 10% compared to 7.2% and 6.8% respectively. It has also grown by 38% compared to 25% and 20%.
- Decrease in York's 5-14 age range is similar to the regional and national drop.
- The 85 and over age range has grown more than region and nationally at 38% compared to 20% and 23%.

Topic: 2011 Census Briefing

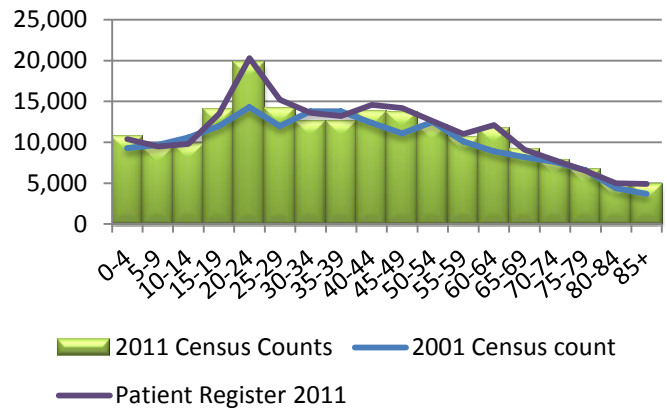
Period: Census 2011 (1st Release July 16th 2012)

Data and Graphs

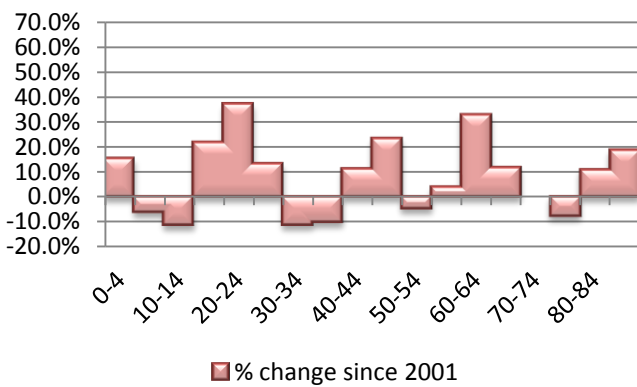
Census 2011 - Change since 2001



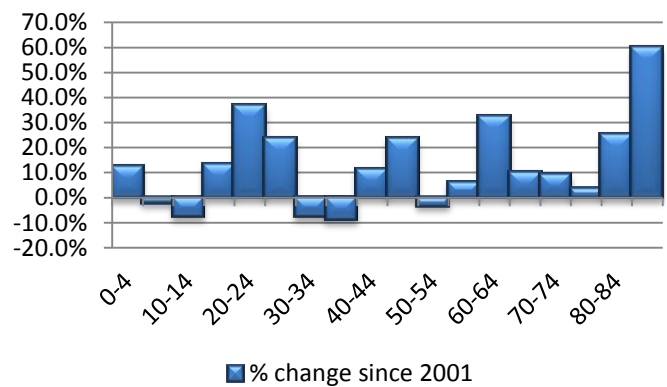
Census 2011 - Across Age Ranges



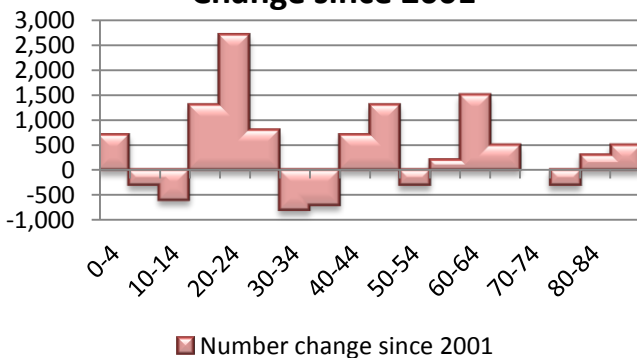
Census 2011 - Female % Change since 2001



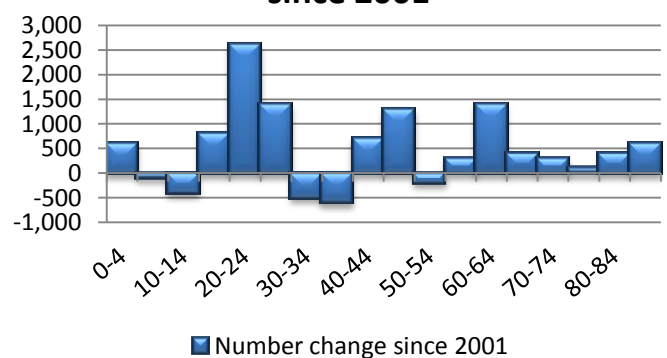
Census 2011 - Male % Change since 2001



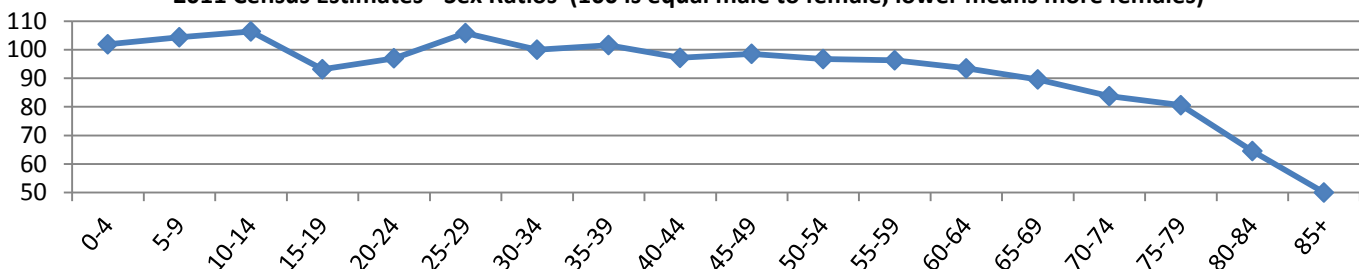
Census 2011 - Female Count Change since 2001



Census 2011 - Male Count Change since 2001



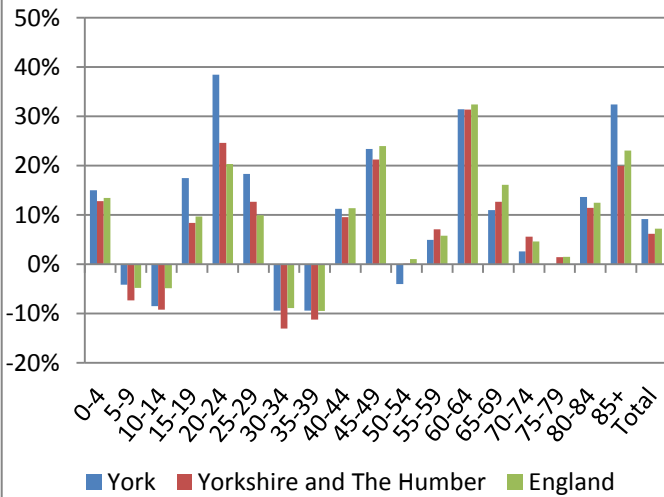
2011 Census Estimates - Sex Ratios (100 is equal male to female, lower means more females)



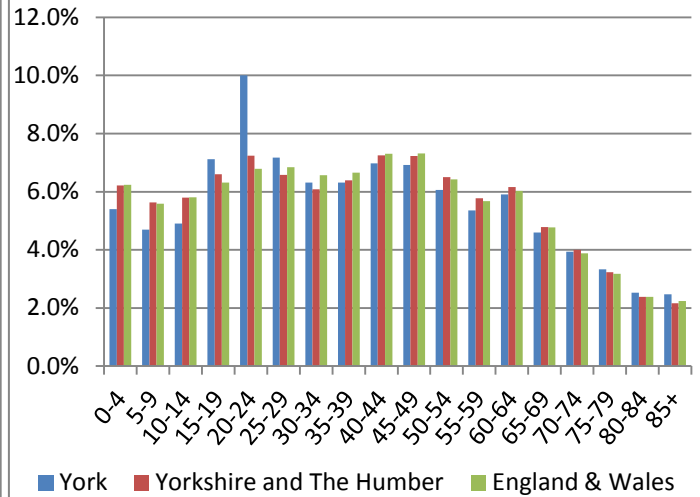
Topic: 2011 Census Briefing

Period: Census 2011 (1st Release July 16th 2012)

2011 Census - Region and National Change since 2001



2011 Census - Region and National Comparison



Census 2011 count across age bands and gender

Age Bands	Total	Total Change since 2001	Female	Female Change since 2001	Male	Male Change since 2001
0-4	10700	15.1%	5300	15.2%	5400	12.5%
5-9	9300	-4.1%	4600	-6.1%	4800	-2.0%
10-14	9700	-8.5%	4700	-11.3%	5000	-7.4%
15-19	14100	17.5%	7300	21.7%	6800	13.3%
20-24	19800	38.5%	10000	37.0%	9700	36.6%
25-29	14200	18.3%	6900	13.1%	7300	23.7%
30-34	12500	-9.4%	6300	-11.3%	6300	-7.4%
35-39	12500	-9.4%	6200	-10.1%	6300	-8.7%
40-44	13800	11.3%	7000	11.1%	6800	11.5%
45-49	13700	23.4%	6900	23.2%	6800	23.6%
50-54	12000	-4.0%	6100	-4.7%	5900	-3.3%
55-59	10600	5.0%	5400	3.8%	5200	6.1%
60-64	11700	31.5%	6100	32.6%	5700	32.6%
65-69	9100	11.0%	4800	11.6%	4300	10.3%
70-74	7800	2.6%	4300	0.0%	3600	9.1%
75-79	6600	0.0%	3600	-7.7%	2900	3.6%
80-84	5000	13.6%	3100	10.7%	2000	25.0%
85+	4900	32.4%	3200	18.5%	1600	60.0%
Total	198000	9.2%	101800	8.2%	96300	10.4%

Topic: 2011 Census Briefing

Period: Census 2011 (1st Release July 16th 2012)

Impact of Census Count 2011

The census 2011 count is lower for York than previously predicted. Much of this is across certain age groups. Services will have to review the impact of the Census 2011 on service planning.

The main 2 age bands affected are between 20-24 and 25-29. These are 4,600 lower than the 2010 mid year predictions mainly as a result of changes to the way migration is calculated.

Other areas affected include the 0-4 year olds which is 4.9% higher than the 2010 predictions and the 65-69 year olds which is 4.6% higher. This may impact on future school pupil numbers forecast and increasing demands on adult social care which may have a knock on effect for housing plans.

Although the 5-14 age range has decreased since 2001 it's not as low as previously predicted.

Further Information

- Data Source: <http://www.ons.gov.uk/ons/index.html>