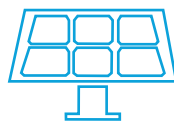
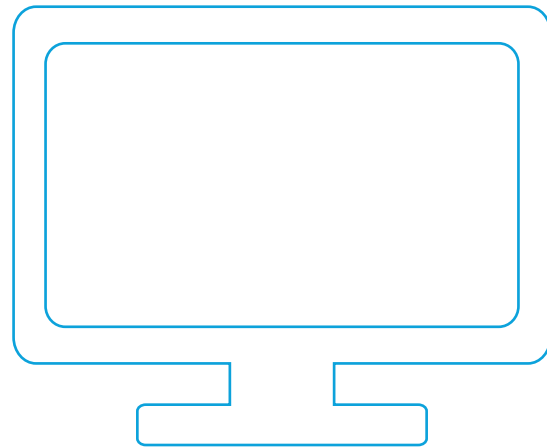
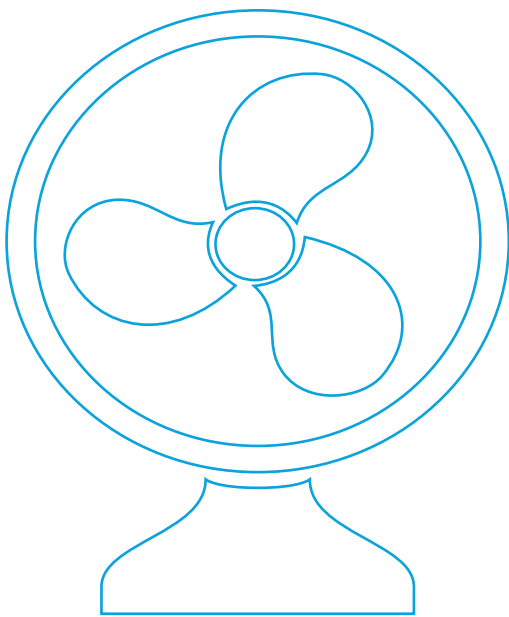


# Global LEAP Awards

## 2017 Buyer's Guide for Off-Grid Fans and Televisions



# Contents

---

## 1 The Importance of Off-Grid Appliance Quality Assurance

## 2 Explanation of Product Specifications

---



5	<b>NIWA Solar ELED TV 15.6"</b>	WINNER: Small Television
5	<b>M-KOPA Solar TV STY 1015</b>	FINALIST: Small Television
6	<b>d.light design SV19</b>	WINNER: Medium Television
6	<b>MAKS 22M1A</b>	FINALIST: Medium Television
7	<b>MAKS 19M1A</b>	FINALIST: Medium Television
7	<b>Mobisol Solar Home TV 22"</b>	FINALIST: Medium Television
8	<b>Rahimafrooz Powerview 22"</b>	FINALIST: Medium Television
9	<b>NIWA Solar LED TV 23.6"</b>	WINNER: Large Television
9	<b>BBOXX AC0032</b>	FINALIST: Large Television
10	<b>fosera DCTV 240</b>	FINALIST: Large Television
10	<b>Mobisol MSDV2335Y-34635</b>	FINALIST: Large Television
11	<b>Rahimafrooz Powerview 24"</b>	FINALIST: Large Television
11	<b>SolarNow E236ET8C</b>	FINALIST: Large Television
12	<b>NIWA Solar LED TV 32"</b>	WINNER: Extra Large Television
12	<b>Mobisol MSDV 3235Y-34635</b>	FINALIST: Extra Large Television

---



14	<b>Versa Drives SUPER E11</b>	WINNER: Small Ceiling Fan
14	<b>Basil iBreeze Small Ceiling Fan</b>	FINALIST: Small Ceiling Fan
15	<b>Metropolitan ME-203-42IN</b>	FINALIST: Small Ceiling Fan
15	<b>Metropolitan ME-301</b>	FINALIST: Small Ceiling Fan
16	<b>Versa Drives SUPER E1</b>	FINALIST: Small Ceiling Fan
17	<b>Metropolitan ME-701</b>	WINNER: Large Ceiling Fan
17	<b>Metropolitan ME-203-48IN</b>	FINALIST: Large Ceiling Fan
18	<b>Super Star DC-12V56A1</b>	FINALIST: Large Ceiling Fan
19	<b>Metropolitan MEUC16S</b>	WINNER: Pedestal Fan
19	<b>NIWA ECO Air 16" UP</b>	FINALIST: Pedestal Fan
20	<b>Rahimafrooz Powerwing 16" UP</b>	FINALIST: Pedestal Fan
20	<b>Shenzhen Power-Solution FS-7422</b>	FINALIST: Pedestal Fan
21	<b>Metropolitan MEB-10FD</b>	WINNER: Small Table Fan
21	<b>Metropolitan ME6606-VP</b>	FINALIST: Small Table Fan
22	<b>Shenzhen Power-Solution FT-703</b>	FINALIST: Small Table Fan
23	<b>Super Star FT35-DC02A</b>	WINNER: Large Table Fan
23	<b>Metropolitan MEU12DCT</b>	FINALIST: Large Table Fan

## The Global LEAP Awards Buyer's Guide

The Global LEAP Awards Buyer's Guide is a catalog of the world's best off-grid appliances. The 2017 edition contains information about off-grid fans and televisions that were named Winners and Finalists in the 2016-17 Global LEAP Awards. It is designed to serve as a procurement tool for use by off-grid solar companies and other distributors, and to provide general market intelligence to other interested stakeholders. It includes rated product specifications, performance metrics based on laboratory testing, and sales contact information.

The Global LEAP Awards identify one Winner as the best overall product nominated for each category, with other high-quality products in that category identified as Finalists. The 2017 Buyer's Guide lists these products, and contains a total of 17 off-grid fans and 15 off-grid televisions.

The 2017 Global LEAP Awards Buyer's Guide is published by Global Lighting and Energy Access Partnership (Global LEAP), an initiative of the Clean Energy Ministerial (CEM) with support from Power Africa's Beyond the Grid Initiative.

## The Global LEAP Awards

### **An international competition that identifies and promotes the world's best, most energy-efficient off-grid appliances**

High-quality, energy-efficient appliances ensure that un- and under-electrified households and businesses can make the most out of off-grid energy. They are also essential to the growth of off-grid energy markets—they create demand for off-grid energy while reducing energy costs.

The Global LEAP Awards – a program within the framework of the Clean Energy Ministerial (CEM) and led by the U.S. Department of Energy – are intended to help accelerate the global off-grid clean energy market. They incentivize innovation and send the off-grid market clear and actionable signals about appliance quality, energy efficiency, and appropriateness of design and functionality.

All Global LEAP Awards Winners and Finalists have been tested in accredited laboratories for their energy performance, quality, and reliability, and have been evaluated by a panel of off-grid market experts. The products recognized by the Global LEAP Awards offer a strong balance of price, energy efficiency, performance, and reliability.

Off-grid market actors – from manufacturers to distributors, from investors to policymakers – are strongly encouraged to use the Buyer's Guide as a resource in their exploration of the off-grid appliance market, and to contact the manufacturers of Global LEAP Awards Winners and Finalists about the products listed here.

Global LEAP Awards Winners and Finalists are eligible to participate in an affiliated Global LEAP procurement incentives program. This program is designed to drive large-scale procurement and distribution of best-in-class off-grid appliances in key off-grid markets. Further details about this program are available at [www.globalleap.org/incentives](http://www.globalleap.org/incentives).

## Acknowledgements

Global LEAP extends its thanks to the companies that participated in the 2016-17 Global LEAP Awards. Global LEAP would also like to extend a special thanks to the off-grid market and technical experts who served as Expert Judges for the competition, including: Steven Hunt (UK Department for International Development), Dr. Arne Jacobson (Schatz Energy Research Center, Humboldt State University), John Keane (GOGLA), Dr. Rezwan Khan (United International University), Charles Muchunku (former Chairman, Kenya Renewable Energy Association), Arthur Itotia Njagi (IFC Lighting Africa) Clare Boland Ross (Rockefeller Foundation), and Kate Steel (USAID/Power Africa).

## The Importance of Off-Grid Appliance Quality Assurance

Confidence in product quality is essential to the development of the off-grid market. As the off-grid market grows, the threat of low-quality, inefficient products eroding confidence in the market grows with it. Experiences with inferior products are quickly spread by word of mouth in off-grid communities, leading consumers to distrust the products. Decreased consumer confidence poses significant challenges to off-grid business models and undermines efforts to build self-sustaining, robust commercial markets.

More importantly, off-grid populations are typically among the world's poorest people. A small off-grid energy system and the appliances it powers represent big improvements in an off-grid household's quality of life, but require a large investment of very limited income. It's important that the products work as promised.

## The Importance of Off-Grid Appliance Super-Efficiency

By enhancing and enabling off-grid consumer demand for energy services, off-grid appliance super-efficiency is also essential to the growth of clean energy access markets.

Super-efficient off-grid appliances offer greater service. A 40Wp solar module and a 70Ah battery can power a 25W incandescent bulb for 5 hours each day, but the same system can power a super-efficient 21" flat panel TV, two high-quality LED lights, a super-efficient fan, mobile phone charger, and radio. This expanded service enhances consumer demand.

Super-efficiency can also enable sales by reducing system cost. Most of the cost of off-grid energy is attributable to energy supply-related equipment like solar PV and batteries. Super-efficient off-grid appliances radically reduce the need for energy supply investment, lowering prices and opening up vast new markets of consumers who could otherwise not afford off-grid energy services. A recent analysis by experts at Lawrence Berkeley National Laboratory, Humboldt State University, and the University of California found that super-efficient appliances can reduce the total cost of providing off-grid electricity services by as much as 50%. This reduction in price greatly expands the market of consumers that can afford off-grid energy systems.

In other words, by providing greater service and greater cost-effectiveness, super-efficient appliances help off-grid clean energy companies serve more customers.

### DISCLAIMER

The Clean Energy Ministerial, Global LEAP, and associated partners and agents make no claims about the quality, energy performance, or off-grid appropriateness of any product not listed here. The inclusion in this Guide of a manufacturer's product should not be construed as an endorsement of that manufacturer or of its entire product line.

Global LEAP made every effort to provide transparent and accurate testing results for the product performance metrics included in the Buyer's Guide. The performance data included here is the result of testing randomly selected product samples at ISO/IEC-accredited test laboratories. Product performance may vary based on different product configuration, test environments or other factors.

Products were tested in "as shipped" mode. Television luminance was measured, but this value was not incorporated into products' quantitative evaluation. Fans were tested at maximum speed, and their tested power consumption was compared against the rated power input on the product's nameplate.

Data used in the Buyer's Guide should only serve as an indication of product performance. Bulk purchasers considering appliance products are strongly encouraged to request detailed test results from manufacturers and/or conduct independent testing. For guidance on how to interpret the data included here, or on identifying appropriate test laboratories and test methods, please contact Global LEAP.

## Explanation of Product Specifications

To help readers understand the information included for each product in the Buyer's Guide, this page provides explanations of the product details, rated specifications, and laboratory test results for both televisions and fans.



### OFF-GRID TELEVISION PRODUCT SPECIFICATIONS

<b>Product Model Number</b>	Identifies the specific product model
<b>Viewable Screen Size (cm<sup>2</sup>)</b>	Surface area of screen
<b>Aspect Ratio</b>	Ratio of screen width to height (e.g., 16:9)
<b>Safe Operating Voltage (V)</b>	Voltage range within which the television can operate safely as stated by the manufacturer
<b>Rated On Mode Power Consumption (W)</b>	Power consumption as stated by the manufacturer
<b>Tested On Mode Power Consumption (W)</b>	Power consumption in as-shipped setting, based on laboratory testing
<b>Tested Maximum On Mode Power Consumption (W)</b>	Power consumption with volume and brightness settings at their maximums, based on laboratory testing
<b>Tested Standby Mode Power Consumption (W)</b>	Power consumption in standby mode, based on laboratory testing
<b>Tested Luminance in As-Shipped Setting (Cd/m<sup>2</sup>)</b>	Brightness of the television, based on laboratory testing (larger values are better)
<b>Viewing Angle (Horizontal/ Vertical)</b>	Angle at which point the luminance (brightness) drops to 1/3 of its maximum
<b>Power Supply as Shipped</b>	Whether the product operates with AC or DC power, or both
<b>Customizable Power Supply (AC/DC)</b>	Whether the product can be customized to operate with a different power supply



### OFF-GRID FAN PRODUCT SPECIFICATIONS

<b>Product Model Number</b>	Identifies the specific product model
<b>Fan Size (diameter, mm)</b>	Distance between the tips of the fan blades
<b>Number of Regulated Speeds</b>	Number of speeds
<b>Safe Operating Voltage (V)</b>	Voltage range within which the fan can operate safely as stated by the manufacturer
<b>Rated Power Input (W)</b>	Power consumption as stated on the product's nameplate
<b>Tested Power Input (W, at Max Speed)</b>	Power consumption when set at the maximum speed, based on laboratory testing
<b>Tested Air Delivery (m<sup>3</sup>/min)</b>	Amount of air delivered by the fan when set at maximum speed, based on laboratory testing
<b>Motor Type</b>	Indicates whether the fan motor is brushed or brushless
<b>Power Supply as Shipped</b>	Whether the product operates with AC or DC power, or both
<b>Customizable Power Supply (AC/DC)</b>	Whether the product can be customized to operate with a different power supply

# Off-Grid Television Competition Winners & Finalists



Small Televisions



Medium Televisions



Large Televisions



Extra Large Televisions

# Category: Small Televisions

## Niwa



Manufacturer NIWA - Next Energy Products Ltd.  
 Sales Contact Rea Yip  
 Phone +852-2110-4955  
 Email sales@niwasolar.com  
 Website www.niwasolar.com



### SPECIFICATIONS

Product Model Number	Solar ELED TV 15.6"
Viewable Screen Size (cm <sup>2</sup> )	664
Aspect Ratio	16:9
Safe Operating Voltage (V)	10-30
Rated On Mode Power Consumption (W)	8
Tested On Mode Power Consumption (W)	9.81
Tested Maximum On Mode Power Consumption (W)	11.35
Tested Standby Mode Power Consumption (W)	0.171
Tested Luminance in As-Shipped Setting (Cd/m <sup>2</sup> )	53
Viewing Angle (horizontal/ vertical)	66/64
Power Supply as Shipped	DC
Customizable Power Supply (AC/DC)	Yes

## M-KOPA SOLAR



Manufacturer M-KOPA Solar  
 Sales Contact Carl Thielk  
 Phone +254-718-631-739  
 Email Carl.thielk@m-kopa.com  
 Website www.m-kopa.com



### SPECIFICATIONS

Product Model Number	Solar TV STY 1015
Viewable Screen Size (cm <sup>2</sup> )	660
Aspect Ratio	4:3
Safe Operating Voltage (V)	11-12.8
Rated On Mode Power Consumption (W)	5.9
Tested On Mode Power Consumption (W)	6.54
Tested Maximum On Mode Power Consumption (W)	8.66
Tested Standby Mode Power Consumption (W)	0.076
Tested Luminance in As-Shipped Setting (Cd/m <sup>2</sup> )	160
Viewing Angle (horizontal/ vertical)	58/56
Power Supply as Shipped	DC
Customizable Power Supply (AC/DC)	Yes

# Category: Medium Televisions



Manufacturer d.light design  
 Sales Contact Stephen Mutahi  
 Anne Ngige  
 Phone +254 703-896-996  
 Email sales@dlight.com  
 Website www.dlight.com



## SPECIFICATIONS

Product Model Number	SV19
Viewable Screen Size (cm <sup>2</sup> )	1132
Aspect Ratio	4:3
Safe Operating Voltage (V)	10~15
Rated On Mode Power Consumption (W)	9.5
Tested On Mode Power Consumption (W)	9.48
Tested Maximum On Mode Power Consumption (W)	10.8
Tested Standby Mode Power Consumption (W)	0.172
Tested Luminance in As-Shipped Setting (Cd/m <sup>2</sup> )	36
Viewing Angle (horizontal/ vertical)	94/86
Power Supply as Shipped	DC
Customizable Power Supply (AC/DC)	No



Manufacturer MAKS Powertech Ltd  
 Sales Contact Nessar Khan  
 Phone +880-255-042-097  
 Email nessar65@gmail.com  
 Website www.maksgroupbd.com



## SPECIFICATIONS

Product Model Number	22M1A
Viewable Screen Size (cm <sup>2</sup> )	1276
Aspect Ratio	16:9
Safe Operating Voltage (V)	8~18
Rated On Mode Power Consumption (W)	21
Tested On Mode Power Consumption (W)	22.13
Tested Maximum On Mode Power Consumption (W)	26.63
Tested Standby Mode Power Consumption (W)	0.27
Tested Luminance in As-Shipped Setting (Cd/m <sup>2</sup> )	249
Viewing Angle (horizontal/ vertical)	98/89
Power Supply as Shipped	DC
Customizable Power Supply (AC/DC)	Yes



# Category: Medium Televisions



Manufacturer MAKS Powertech Ltd  
 Sales Contact Nessar Khan  
 Phone +880-255-042-097  
 Email nessar65@gmail.com  
 Website www.maksgroupbd.com



## SPECIFICATIONS

Product Model Number	19M1A
Viewable Screen Size (cm <sup>2</sup> )	943
Aspect Ratio	16:9
Safe Operating Voltage (V)	8~18
Rated On Mode Power Consumption (W)	18
Tested On Mode Power Consumption (W)	20.97
Tested Maximum On Mode Power Consumption (W)	25.56
Tested Standby Mode Power Consumption (W)	0.27
Tested Luminance in As-Shipped Setting (Cd/m <sup>2</sup> )	190
Viewing Angle (horizontal/ vertical)	114/100
Power Supply as Shipped	DC
Customizable Power Supply (AC/DC)	Yes



Manufacturer Mobisol GmbH  
 Sales Contact Klaus Maier  
 Phone +49-307-2621-7444  
 Email partnerships@  
 plugintheworld.com  
 Website www.plugintheworld.com



## SPECIFICATIONS

Product Model Number	Solar Home TV - 22"
Viewable Screen Size (cm <sup>2</sup> )	1278
Aspect Ratio	16:9
Safe Operating Voltage (V)	9-16
Rated On Mode Power Consumption (W)	25
Tested On Mode Power Consumption (W)	8.59
Tested Maximum On Mode Power Consumption (W)	13.55
Tested Standby Mode Power Consumption (W)	0.178
Tested Luminance in As-Shipped Setting (Cd/m <sup>2</sup> )	18
Viewing Angle (horizontal/ vertical)	90/85
Power Supply as Shipped	DC
Customizable Power Supply (AC/DC)	Yes

# Category: Medium Televisions



Manufacturer Rahimafrooz Renewable Energy Ltd.  
Sales Contact Fahim Mahmud  
Phone +880-175-001-0475  
Email fahim.mahmud@rahimafrooz.com  
Website www.rahimafrooz-solar.com

## SPECIFICATIONS

Product Model Number	Powerview 22"
Viewable Screen Size (cm <sup>2</sup> )	1276
Aspect Ratio	16:9
Safe Operating Voltage (V)	11-23
Rated On Mode Power Consumption (W)	14
Tested On Mode Power Consumption (W)	16.51
Tested Maximum On Mode Power Consumption (W)	19.44
Tested Standby Mode Power Consumption (W)	0.31
Tested Luminance in As-Shipped Setting (Cd/m <sup>2</sup> )	105
Viewing Angle (horizontal/ vertical)	109/104
Power Supply as Shipped	DC
Customizable Power Supply (AC/DC)	Yes

# Category: Large Televisions

## Niwa



Manufacturer NIWA - Next Energy Products Ltd.  
Sales Contact Rea Yip  
Phone +852-2110-4955  
Email sales@niwasolar.com  
Website www.niwasolar.com



### SPECIFICATIONS

Product Model Number	Solar LED TV 23.6"
Viewable Screen Size (cm <sup>2</sup> )	1527
Aspect Ratio	16:9
Safe Operating Voltage (V)	10-30
Rated On Mode Power Consumption (W)	13
Tested On Mode Power Consumption (W)	11.7
Tested Maximum On Mode Power Consumption (W)	18.46
Tested Standby Mode Power Consumption (W)	0.269
Tested Luminance in As-Shipped Setting (Cd/m <sup>2</sup> )	63
Viewing Angle (horizontal/ vertical)	106/103
Power Supply as Shipped	DC
Customizable Power Supply (AC/DC)	Yes



Manufacturer BBOXX  
Sales Contact Anshul Patel  
Phone +44-741-928-2428  
Email a.patel@bboxx.co.uk  
Website www.bboxx.co.uk



### SPECIFICATIONS

Product Model Number	AC0032
Viewable Screen Size (cm <sup>2</sup> )	1521
Aspect Ratio	16:9
Safe Operating Voltage (V)	11.4-14
Rated On Mode Power Consumption (W)	14
Tested On Mode Power Consumption (W)	12.11
Tested Maximum On Mode Power Consumption (W)	13.38
Tested Standby Mode Power Consumption (W)	0.14
Tested Luminance in As-Shipped Setting (Cd/m <sup>2</sup> )	65
Viewing Angle (horizontal/ vertical)	129/126
Power Supply as Shipped	DC
Customizable Power Supply (AC/DC)	Yes



Manufacturer fosera Group  
 Sales Contact Guzman Zotes  
 Phone +249-734-6924-6973  
 Email guzman.zotes@fosera.com  
 Website www.fosera.com



## SPECIFICATIONS

Product Model Number	DCTV 240
Viewable Screen Size (cm <sup>2</sup> )	1521
Aspect Ratio	16:9
Safe Operating Voltage (V)	12V +/-3V
Rated On Mode Power Consumption (W)	12
Tested On Mode Power Consumption (W)	14.4
Tested Maximum On Mode Power Consumption (W)	18.19
Tested Standby Mode Power Consumption (W)	0.1
Tested Luminance in As-Shipped Setting (Cd/m <sup>2</sup> )	79
Viewing Angle (horizontal/ vertical)	107/101
Power Supply as Shipped	DC
Customizable Power Supply (AC/DC)	No



Manufacturer Mobisol GmbH  
 Sales Contact Klaus Maier  
 Phone +49-307-2621-7444  
 Email partnerships@  
 plugintheworld.com  
 Website www.plugintheworld.com



## SPECIFICATIONS

Product Model Number	MSD- V2335Y-34635
Viewable Screen Size (cm <sup>2</sup> )	1521
Aspect Ratio	16:9
Safe Operating Voltage (V)	10-15
Rated On Mode Power Consumption (W)	35
Tested On Mode Power Consumption (W)	14.67
Tested Maximum On Mode Power Consumption (W)	17.43
Tested Standby Mode Power Consumption (W)	0.394
Tested Luminance in As-Shipped Setting (Cd/m <sup>2</sup> )	109
Viewing Angle (horizontal/ vertical)	113/79
Power Supply as Shipped	DC
Customizable Power Supply (AC/DC)	Yes

# Category: Large Televisions



**Manufacturer** Rahimafrooz Renewable Energy Ltd.  
**Sales Contact** Fahim Mahmud  
**Phone** +880-175-001-0475  
**Email** fahim.mahmud@rahimafrooz.com  
**Website** www.rahimafrooz-solar.com



## SPECIFICATIONS

Product Model Number	Powerview 24"
Viewable Screen Size (cm <sup>2</sup> )	1527
Aspect Ratio	16:9
Safe Operating Voltage (V)	11-23
Rated On Mode Power Consumption (W)	15
Tested On Mode Power Consumption (W)	16.67
Tested Maximum On Mode Power Consumption (W)	19.94
Tested Standby Mode Power Consumption (W)	0.28
Tested Luminance in As-Shipped Setting (Cd/m <sup>2</sup> )	139
Viewing Angle (horizontal/ vertical)	127/112
Power Supply as Shipped	DC
Customizable Power Supply (AC/DC)	Yes



**Manufacturer** SolarNow  
**Sales Contact** Rose Atkinson  
**Phone** +256-788-916-648  
**Email** rose@solarnow.eu  
**Website** www.solarnow.eu



## SPECIFICATIONS

Product Model Number	E236ET8C
Viewable Screen Size (cm <sup>2</sup> )	1527
Aspect Ratio	16:9
Safe Operating Voltage (V)	11-15
Rated On Mode Power Consumption (W)	40
Tested On Mode Power Consumption (W)	23.41
Tested Maximum On Mode Power Consumption (W)	27.1
Tested Standby Mode Power Consumption (W)	0.203
Tested Luminance in As-Shipped Setting (Cd/m <sup>2</sup> )	242
Viewing Angle (horizontal/ vertical)	90/86
Power Supply as Shipped	DC
Customizable Power Supply (AC/DC)	Yes

# Category: Extra Large Televisions

## Niwa



Manufacturer NIWA - Next Energy Products Ltd.  
 Sales Contact Rea Yip  
 Phone +852 2110 4955  
 Email sales@niwasolar.com  
 Website www.niwasolar.com



### SPECIFICATIONS

Product Model Number	Solar LED TV 32"
Viewable Screen Size (cm <sup>2</sup> )	2725
Aspect Ratio	16:9
Safe Operating Voltage (V)	10-30
Rated On Mode Power Consumption (W)	30
Tested On Mode Power Consumption (W)	13.64
Tested Maximum On Mode Power Consumption (W)	23.22
Tested Standby Mode Power Consumption (W)	0.192
Tested Luminance in As-Shipped Setting (Cd/m <sup>2</sup> )	67
Viewing Angle (horizontal/ vertical)	84/79
Power Supply as Shipped	DC
Customizable Power Supply (AC/DC)	Yes

## mobisol



Manufacturer Mobisol GmbH  
 Sales Contact Klaus Maier  
 Phone +49-307-2621-7444  
 Email partnerships@plugintheworld.com  
 Website www.plugintheworld.com



### SPECIFICATIONS

Product Model Number	MSDV 3235Y-34635
Viewable Screen Size (cm <sup>2</sup> )	2725
Aspect Ratio	16:9
Safe Operating Voltage (V)	10-15
Rated On Mode Power Consumption (W)	40
Tested On Mode Power Consumption (W)	21.88
Tested Maximum On Mode Power Consumption (W)	26.97
Tested Standby Mode Power Consumption (W)	0.393
Tested Luminance in As-Shipped Setting (Cd/m <sup>2</sup> )	148
Viewing Angle (horizontal/ vertical)	112/77
Power Supply as Shipped	DC
Customizable Power Supply (AC/DC)	Yes

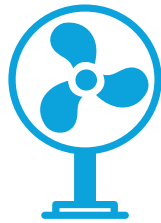
# Off-Grid Fans Competition Winners & Finalists



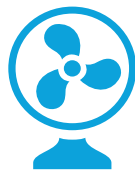
Small Ceiling Fans



Large Ceiling Fans



Pedestal Fans



Large Table Fans



Small Table Fans

# Category: Small Ceiling Fans



**Manufacturer** Versa Drives Private Limited  
**Sales Contact** Sundar Muruganandhan  
**Phone** +91 94425 27999  
**Email** sundar@versadrives.com  
**Website** www.superfan.in



## SPECIFICATIONS

Product Model Number	SUPER E11
Fan Size (diameter, mm)	1196
Number of Regulated Speeds	5
Safe Operating Voltage (V)	9-15
Rated Power Input (W)	25
Tested Power Input (W, at Max Speed)	22.6
Tested Air Delivery (m <sup>3</sup> /min)	147.85
Motor Type	Brushless
Power Supply as Shipped	DC
Customizable Power Supply (AC/DC)	Yes



Control the Future, Invent it



**Manufacturer** Basil Energetics Private Limited  
**Sales Contact** Dr R Ramarathnam  
**Phone** + 91 -928-21 7-0292  
**Email** Irramarathnam@basilenergetics.com  
**Website** www.basilenergetics.com



## SPECIFICATIONS

Product Model Number	iBreez Small Ceiling Fan
Fan Size (diameter, mm)	1160
Number of Regulated Speeds	4
Safe Operating Voltage (V)	140 -375
Rated Power Input (W)	20
Tested Power Input (W, at Max Speed)	20.47
Tested Air Delivery (m <sup>3</sup> /min)	140.31
Motor Type	Brushless
Power Supply as Shipped	DC
Customizable Power Supply (AC/DC)	Yes



# Category: Small Ceiling Fans



Manufacturer Metropolitan Electrical Appliance Mfg Co. Ltd  
 Sales Contact Lotis Lau  
 Phone +86-139-2491-7846  
 Email lotis@metropolitanfan.com  
 Website www.metropolitanfan.com



## SPECIFICATIONS

Product Model Number	ME-203-42IN
Fan Size (diameter, mm)	1050
Number of Regulated Speeds	5
Safe Operating Voltage (V)	24
Rated Power Input (W)	26
Tested Power Input (W, at Max Speed)	28.94
Tested Air Delivery (m <sup>3</sup> /min)	152.24
Motor Type	Brushless
Power Supply as Shipped	DC
Customizable Power Supply (AC/DC)	Yes



Manufacturer Metropolitan Electrical Appliance Mfg Co. Ltd  
 Sales Contact Lotis Lau  
 Phone +86 139 2491 7846  
 Email lotis@metropolitanfan.com  
 Website www.metropolitanfan.com



## SPECIFICATIONS

Product Model Number	ME-301
Fan Size (diameter, mm)	1040
Number of Regulated Speeds	5
Safe Operating Voltage (V)	24
Rated Power Input (W)	27
Tested Power Input (W, at Max Speed)	27.62
Tested Air Delivery (m <sup>3</sup> /min)	142.46
Motor Type	Brushless
Power Supply as Shipped	DC
Customizable Power Supply (AC/DC)	Yes



Manufacturer Versa Drives Private Limited  
Sales Contact Sundar Muruganandhan  
Phone +91 94425 27999  
Email [sundar@versadrives.com](mailto:sundar@versadrives.com)  
Website [www.superfan.in](http://www.superfan.in)



## SPECIFICATIONS

Product Model Number	SUPER E1
Fan Size (diameter, mm)	1196
Number of Regulated Speeds	5
Safe Operating Voltage (V)	160-265
Rated Power Input (W)	35
Tested Power Input (W, at Max Speed)	34.15
Tested Air Delivery (m <sup>3</sup> /min)	189.35
Motor Type	Brushless
Power Supply as Shipped	AC
Customizable Power Supply (AC/DC)	Yes

# Category: Large Ceiling Fans



Manufacturer Metropolitan Electrical Appliance Mfg Co. Ltd  
 Sales Contact Lotis Lau  
 Phone +86 139 2491 7846  
 Email lotis@metropolitanfan.com  
 Website www.metropolitanfan.com



Product Model Number	ME-701
Fan Size (diameter, mm)	1410
Number of Regulated Speeds	4
Safe Operating Voltage (V)	12
Rated Power Input (W)	25
Tested Power Input (W, at Max Speed)	29.19
Tested Air Delivery (m <sup>3</sup> /min)	193.43
Motor Type	Brushless
Power Supply as Shipped	DC
Customizable Power Supply (AC/DC)	Yes



Manufacturer Metropolitan Electrical Appliance Mfg Co. Ltd  
 Sales Contact Lotis Lau  
 Phone +86 139 2491 7846  
 Email lotis@metropolitanfan.com  
 Website www.metropolitanfan.com



## SPECIFICATIONS

Product Model Number	ME-203-48IN
Fan Size (diameter, mm)	1210
Number of Regulated Speeds	5
Safe Operating Voltage (V)	220
Rated Power Input (W)	34
Tested Power Input (W, at Max Speed)	32.42
Tested Air Delivery (m <sup>3</sup> /min)	169.39
Motor Type	Brushless
Power Supply as Shipped	DC
Customizable Power Supply (AC/DC)	Yes

# Category: Large Ceiling Fans



**SUPER STAR**  
**SOLAR**



**Global  
LEAP  
Awards**  
**Finalist**



Manufacturer Super Star Renewable Energy Ltd  
Sales Contact Tofael Ahmed  
Phone +880-175-563-3924  
Email tofael@ssgbd.com  
Website www.ssgbd.com

## SPECIFICATIONS

Product Model Number	DC-12V56A1
Fan Size (diameter, mm)	1400
Number of Regulated Speeds	5
Safe Operating Voltage (V)	10-16
Rated Power Input (W)	36
Tested Power Input (W, at Max Speed)	34.07
Tested Air Delivery (m <sup>3</sup> /min)	199.75
Motor Type	Brushless
Power Supply as Shipped	DC
Customizable Power Supply (AC/DC)	Yes

# Category: Pedestal Fans



**Manufacturer** Metropolitan Electrical Appliance Mfg Co. Ltd  
**Sales Contact** Lotis Lau  
**Phone** +86 139 2491 7846  
**Email** lotis@metropolitanfan.com  
**Website** www.metropolitanfan.com



## SPECIFICATIONS

Product Model Number	MEUC16S
Fan Size (diameter, mm)	375
Number of Regulated Speeds	3
Safe Operating Voltage (V)	12
Rated Power Input (W)	19
Tested Power Input (W, at Max Speed)	6.89
Tested Air Delivery (m <sup>3</sup> /min)	27.12
Motor Type	Brushless
Power Supply as Shipped	DC
Customizable Power Supply (AC/DC)	Yes

# Niwa



**Manufacturer** NIWA - Next Energy Products Ltd.  
**Sales Contact** Rea Yip  
**Phone** +852 2110 4955  
**Email** sales@niwasolar.com  
**Website** www.niwasolar.com



## SPECIFICATIONS

Product Model Number	ECO Air 16" UP
Fan Size (diameter, mm)	385
Number of Regulated Speeds	3
Safe Operating Voltage (V)	10-15
Rated Power Input (W)	9
Tested Power Input (W, at Max Speed)	9.86
Tested Air Delivery (m <sup>3</sup> /min)	34.09
Motor Type	Brushless
Power Supply as Shipped	DC
Customizable Power Supply (AC/DC)	Yes

# Category: Pedestal Fans



Manufacturer Rahimafrooz Renewable Energy Ltd.  
 Sales Contact Fahim Mahmud  
 Phone +880-175-001-0475  
 Email fahim.mahmud@rahimafrooz.com  
 Website www.rahimafrooz-solar.com



## SPECIFICATIONS

Product Model Number	Powerwing 16" UP
Fan Size (diameter, mm)	380
Number of Regulated Speeds	3
Safe Operating Voltage (V)	9-16
Rated Power Input (W)	10.5
Tested Power Input (W, at Max Speed)	9.87
Tested Air Delivery (m <sup>3</sup> /min)	28.26
Motor Type	Brushed
Power Supply as Shipped	DC
Customizable Power Supply (AC/DC)	Yes



## POWER-SOLUTION



Manufacturer Shenzhen Power-Solution Ind. Co., Ltd  
 Sales Contact Susan Lee  
 Phone +86-135-0285-6753  
 Email susan@power-solution.net.cn  
 Website www.power-solution.net.cn



## SPECIFICATIONS

Product Model Number	FS-7422
Fan Size (diameter, mm)	352
Number of Regulated Speeds	0
Safe Operating Voltage (V)	11-13
Rated Power Input (W)	30
Tested Power Input (W, at Max Speed)	21.75
Tested Air Delivery (m <sup>3</sup> /min)	41.58
Motor Type	Brushless
Power Supply as Shipped	DC
Customizable Power Supply (AC/DC)	Yes

# Category: Small Table Fans



**Manufacturer** Metropolitan Electrical Appliance Mfg Co. Ltd  
**Sales Contact** Lotis Lau  
**Phone** +86 139 2491 7846  
**Email** lotis@metropolitanfan.com  
**Website** www.metropolitanfan.com



## SPECIFICATIONS

Product Model Number	MEB-10FD
Fan Size (diameter, mm)	245
Number of Regulated Speeds	2
Safe Operating Voltage (V)	12
Rated Power Input (W)	3
Tested Power Input (W, at Max Speed)	4.74
Tested Air Delivery (m <sup>3</sup> /min)	12.93
Motor Type	Brushless
Power Supply as Shipped	DC
Customizable Power Supply (AC/DC)	Yes

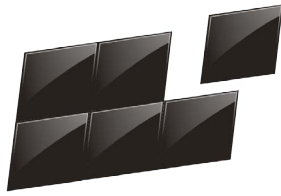


**Manufacturer** Metropolitan Electrical Appliance Mfg Co. Ltd  
**Sales Contact** Lotis Lau  
**Phone** +86 139 2491 7846  
**Email** lotis@metropolitanfan.com  
**Website** www.metropolitanfan.com



## SPECIFICATIONS

Product Model Number	ME6606-VP
Fan Size (diameter, mm)	140
Number of Regulated Speeds	2
Safe Operating Voltage (V)	5
Rated Power Input (W)	3
Tested Power Input (W, at Max Speed)	8.11
Tested Air Delivery (m <sup>3</sup> /min)	7.07
Motor Type	Brushless
Power Supply as Shipped	DC
Customizable Power Supply (AC/DC)	Yes



## POWER-SOLUTION



Manufacturer Shenzhen Power-Solution  
Ind. Co., Ltd  
Sales Contact Susan Lee  
Phone +86-135-0285-6753  
Email susan@power-solution.  
net.cn  
Website www.power-solution.net.cn



### SPECIFICATIONS

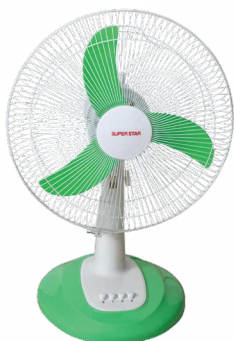
Product Model Number	FT-703
Fan Size (diameter, mm)	180
Number of Regulated Speeds	3
Safe Operating Voltage (V)	11-13
Rated Power Input (W)	16
Tested Power Input (W, at Max Speed)	9
Tested Air Delivery (m <sup>3</sup> /min)	9.9
Motor Type	Brushless
Power Supply as Shipped	DC
Customizable Power Supply (AC/DC)	Yes



# Category: Large Table Fans



**SUPER STAR  
SOLAR**



Manufacturer Super Star Renewable Energy Ltd  
Sales Contact Tofael Ahmed  
Phone +880-175-563-3924  
Email tofael@ssgbd.com  
Website www.ssgbd.com



**Global  
LEAP  
Awards**  
Winner

## SPECIFICATIONS

Product Model Number	FT35-DC02A
Fan Size (diameter, mm)	350
Number of Regulated Speeds	3
Safe Operating Voltage (V)	10-16
Rated Power Input (W)	12
Tested Power Input (W, at Max Speed)	10.47
Tested Air Delivery (m <sup>3</sup> /min)	35.56
Motor Type	Brushed
Power Supply as Shipped	DC
Customizable Power Supply (AC/DC)	Yes



Manufacturer Metropolitan Electrical Appliance Mfg Co. Ltd  
Sales Contact Lotis Lau  
Phone +86 139 2491 7846  
Email lotis@metropolitanfan.com  
Website www.metropolitanfan.com



**Global  
LEAP  
Awards**  
Finalist

## SPECIFICATIONS

Product Model Number	MEU12DCT
Fan Size (diameter, mm)	286
Number of Regulated Speeds	3
Safe Operating Voltage (V)	34
Rated Power Input (W)	19
Tested Power Input (W, at Max Speed)	9.62
Tested Air Delivery (m <sup>3</sup> /min)	30.72
Motor Type	Brushless
Power Supply as Shipped	DC
Customizable Power Supply (AC/DC)	Yes



© Daniel Azocar / iStock Photo



[GlobalLEAP.org](https://GlobalLEAP.org)



[info@GlobalLEAP.org](mailto:info@GlobalLEAP.org)



[@GlobalLEAPaward](https://twitter.com/GlobalLEAPaward)



CLASP serves as Administrator of the Global LEAP Awards and other Global LEAP initiatives.