

## Series 1500 Portable Anechoic Chambers

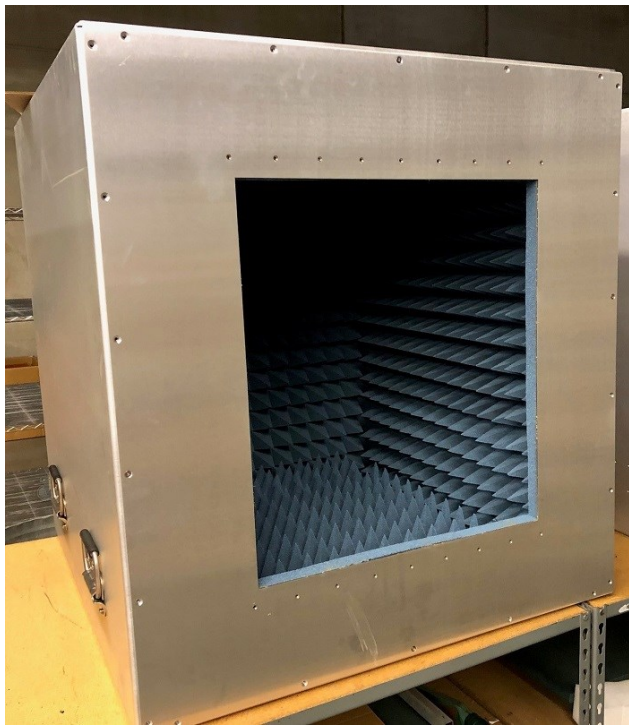
---

*Bringing the Test Range to Your Test Bench*

### Product Summary

#### Introduction

The Eastern OptX Series 1500 are portable anechoic chambers for RF and Microwave Test Applications. These chambers are available in a variety of frequency bands with built-in antennas and cabling, as well as access panels for modifications and expansion.



#### Standard System

##### Features

- Single and double ended systems
- Up to 40 GHz
- Swappable Antenna windows
- Easy antenna replacement
- Expandable
- Lightweight aluminum construction
- Movable Gimbal Options with remote control capability
- On site assembly and installation

**Eastern OptX, Inc. A USA Small Business**

401 Bordentown Hedding Rd., Suite A Bordentown NJ 80505 877 670 6789

[www.eastern-optx.com](http://www.eastern-optx.com) · [sales@eastern-optx.com](mailto:sales@eastern-optx.com) · CAGE Code 56N13

## Series 1500 Portable Anechoic Chambers

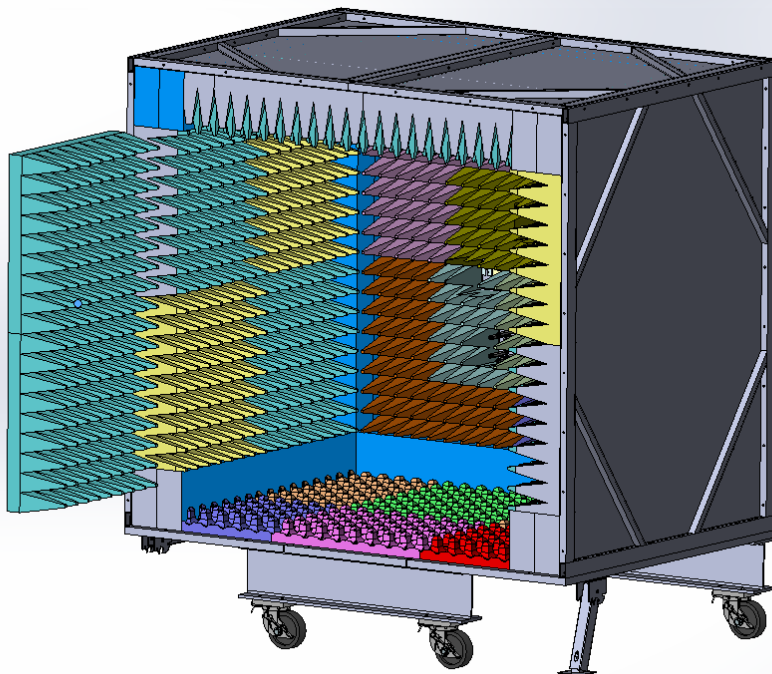
---

*Bringing the Test Range to Your Test Bench*

### Product Summary

#### Standard System

#### Features



- RF Hat Style (One open end, removable window from the antenna mount end. Shown with wheel base.

**Eastern OptX, Inc. A USA Small Business**

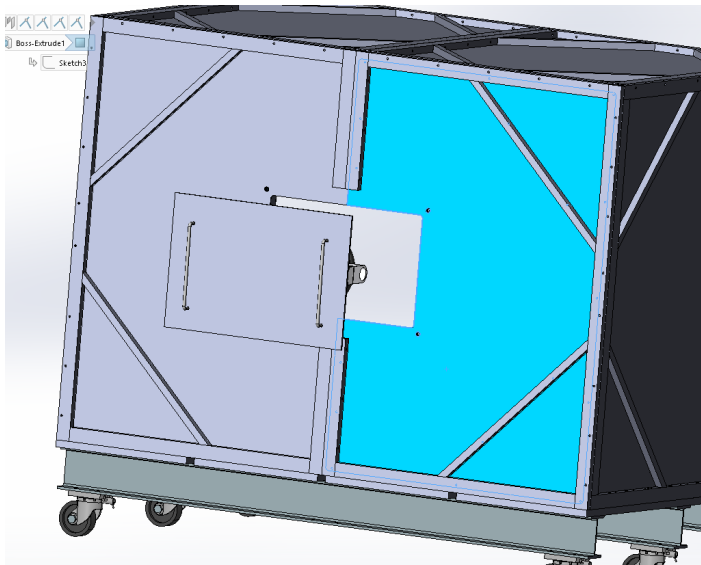
401 Bordentown Hedding Rd., Suite A Bordentown NJ 80505 877 670 6789

[www.eastern-optx.com](http://www.eastern-optx.com) · [sales@eastern-optx.com](mailto:sales@eastern-optx.com) · CAGE Code 56N13

## Series 1500 Portable Anechoic Chambers

*Bringing the Test Range to Your Test Bench*

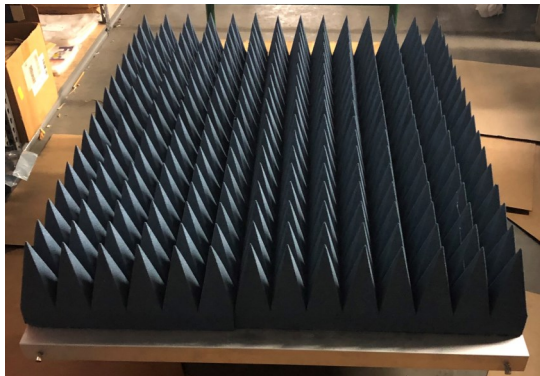
### Product Summary



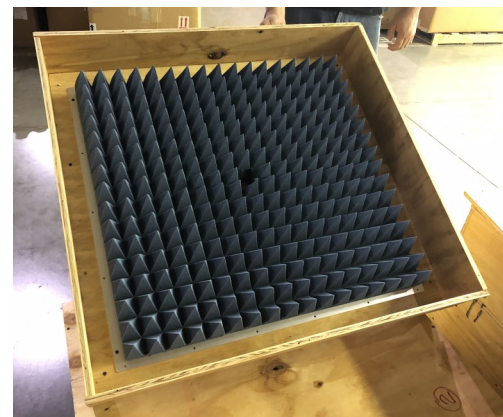
### Standard System

#### Features

- Removable RF Antenna Window. The window may be one of several, easily swappable antenna mounts for simple and rapid system re-configuration.
- Table top or wheel base options.
- Removable Floor



**Removable Floor**



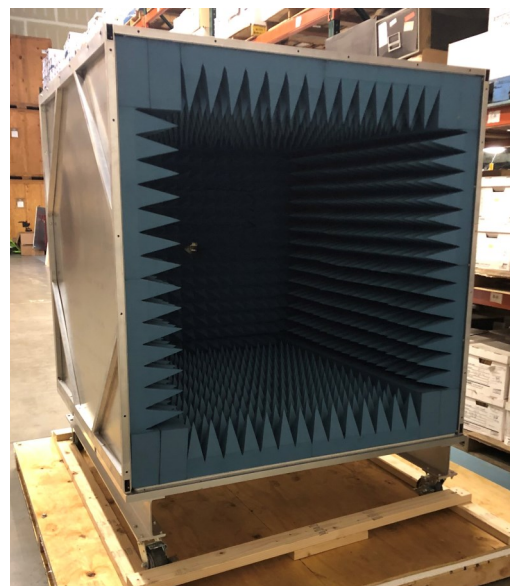
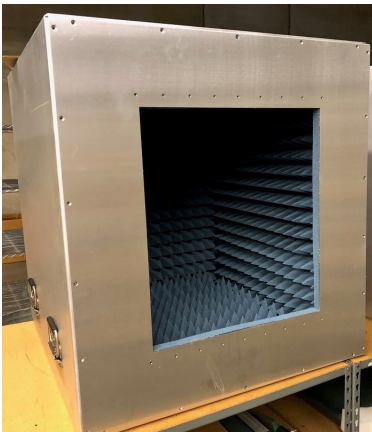
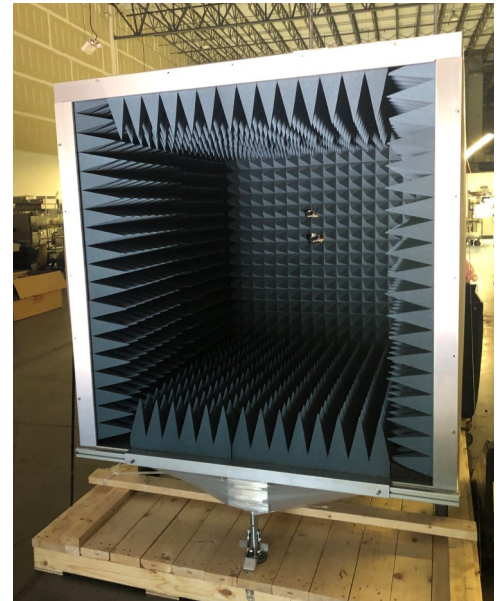
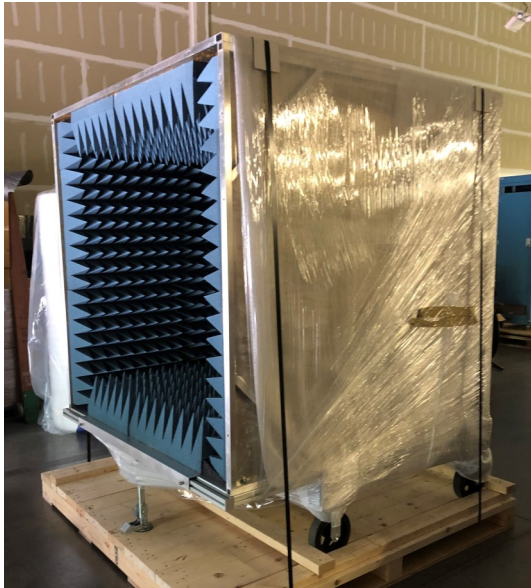
**Antenna Mount Window**



## Series 1500 Portable Anechoic Chambers

*Bringing the Test Range to Your Test Bench*

### Configurations



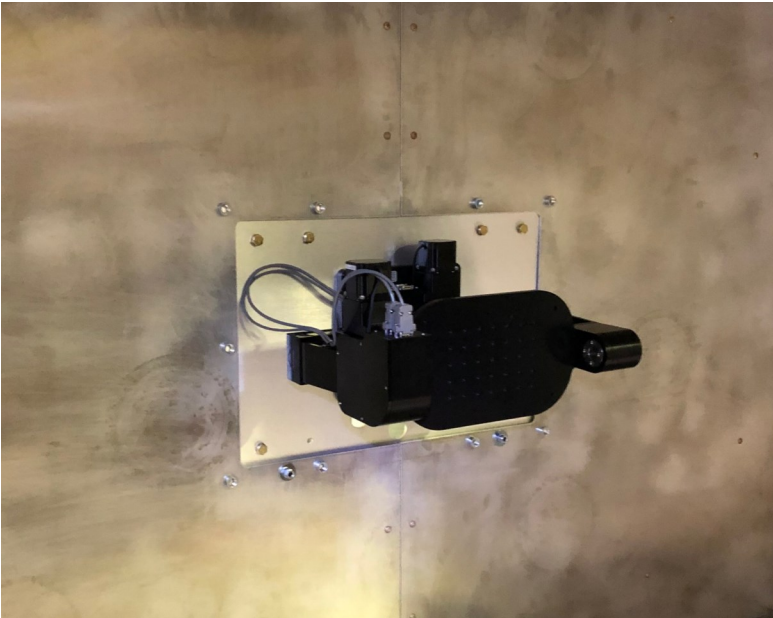
**Eastern OptX, Inc. A USA Small Business**

401 Bordentown Hedding Rd., Suite A Bordentown NJ 80505 877 670 6789

[www.eastern-optx.com](http://www.eastern-optx.com) · [sales@eastern-optx.com](mailto:sales@eastern-optx.com) · CAGE Code 56N13

## Series 1500 Portable Anechoic Chambers

*Bringing the Test Range to Your Test Bench*



**Eastern OptX, Inc. A USA Small Business**

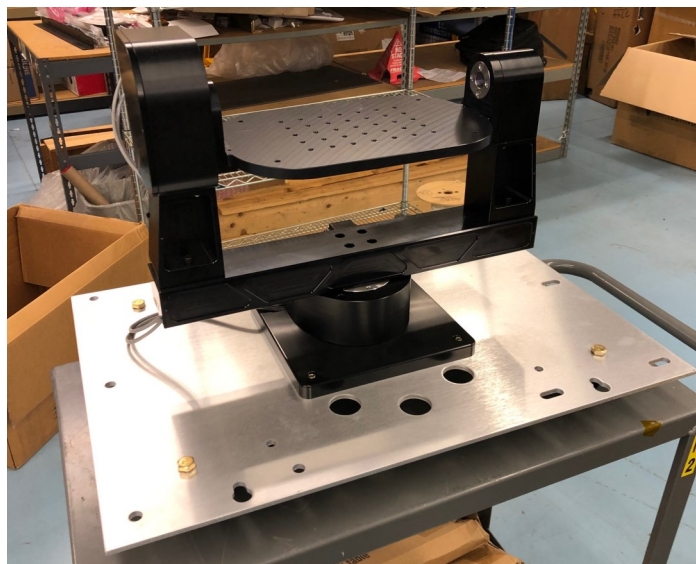
401 Bordentown Hedding Rd., Suite A Bordentown NJ 80505 877 670 6789

[www.eastern-optx.com](http://www.eastern-optx.com) · [sales@eastern-optx.com](mailto:sales@eastern-optx.com) · CAGE Code 56N13



## Series 1500 Portable Anechoic Chambers

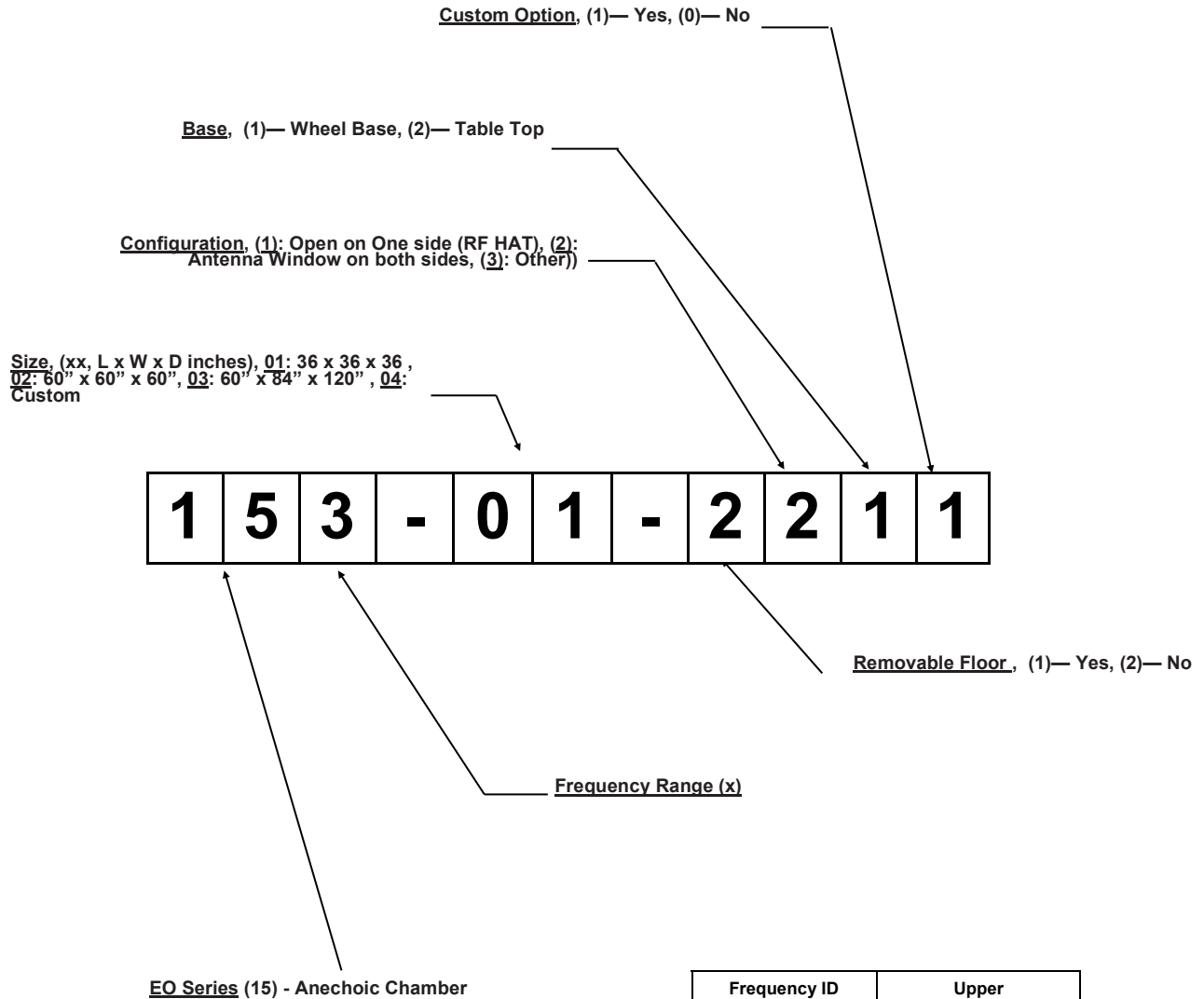
*Bringing the Test Range to Your Test Bench*



**Eastern OptX, Inc. A USA Small Business**

401 Bordentown Hedding Rd., Suite A Bordentown NJ 80505 877 670 6789

[www.eastern-optx.com](http://www.eastern-optx.com) · [sales@eastern-optx.com](mailto:sales@eastern-optx.com) · CAGE Code 56N13



Frequency ID	Upper Frequency (GHz)
0	3
1	6
2	10
3	15
4	30
5	40

**Eastern OptX, Inc. A USA Small Business**

401 Bordentown Hedding Rd., Suite A Bordentown NJ 80505 877 670 6789

[www.eastern-optx.com](http://www.eastern-optx.com) · [sales@eastern-optx.com](mailto:sales@eastern-optx.com) · CAGE Code 56N13