



easyBI

Advanced Training

Raimonds Simanovskis & Zane Baranovska



**Berlin,
16.02.2018**

Raimonds Simanovskis

“Probably the first eazyBI user”





Zane Baranovska

”Start simple and then dig deeper.”

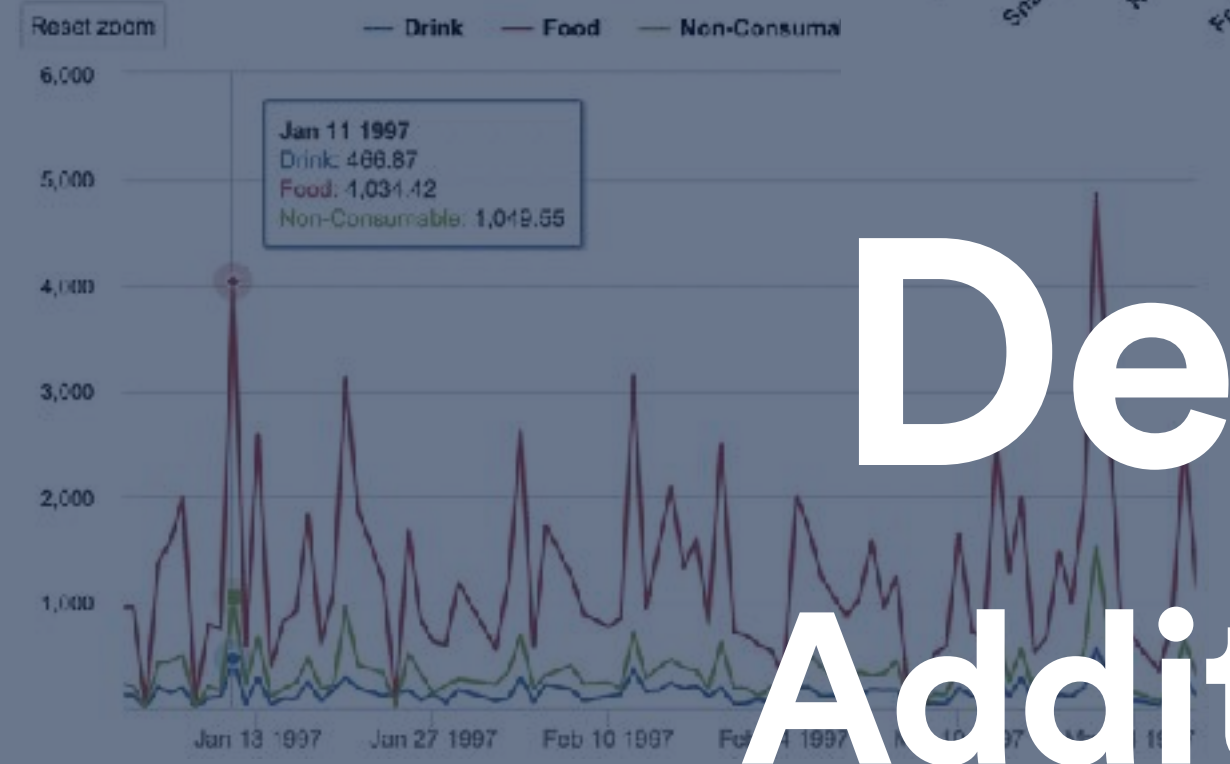
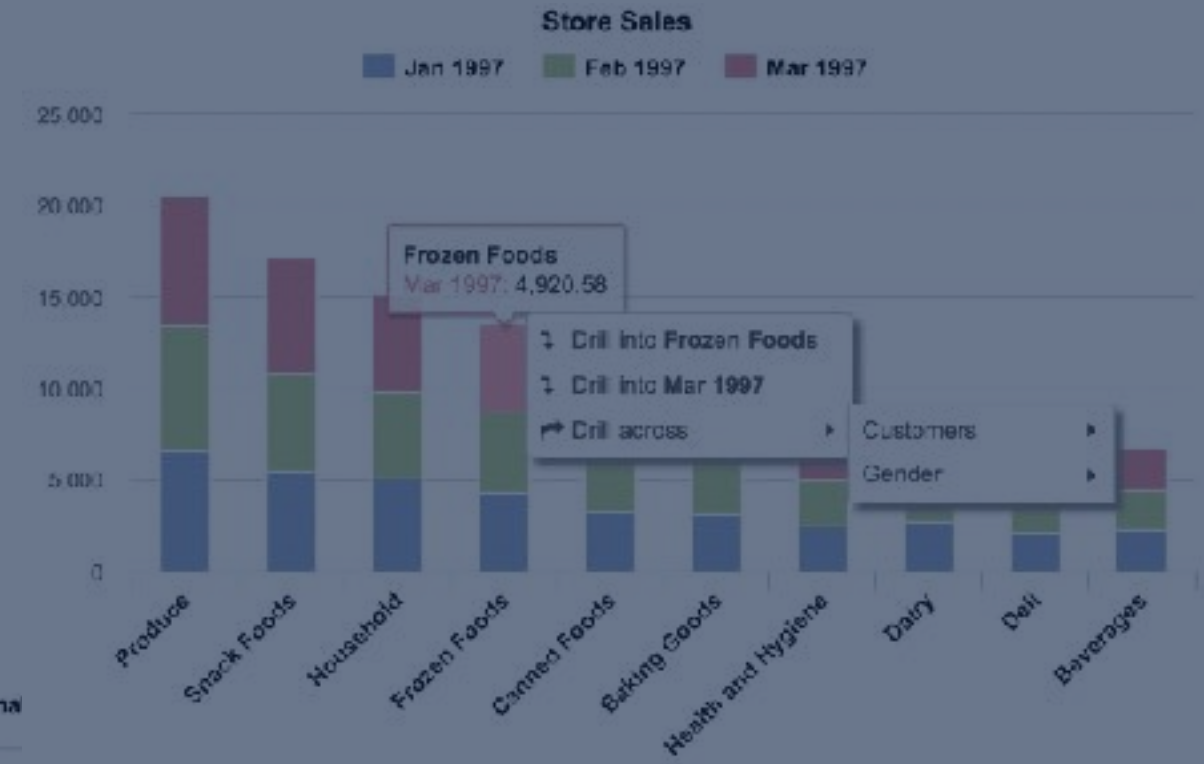
Agenda (13:00 - 16:00)

- **Advanced settings for additional custom field types**
- **Import from other data sources**
- **Calculated member formulas (MDX)**

	Store Sales	Store Cost	Unit	Average
- All Customers	130,626.35	55,752.240		
- USA	130,626.35	55,752.240		
+ CA	36,175.20	14,431.085		
- OR	40,170.29	16,081.073		
+ Albany	4,491.26	1,782.817		
+ Beaverton	2,407.97	950.359		
+ Corvallis	5,695.13	2,281.248		
+ Lake Oswego	2,262.68	907.8483	1,102	6.41
+ Lebanon	5,934.62	2,390.0872	2,825	6.49
+ Milwaukie	2,802.32	1,155.6925	1,345	6.02
+ Oregon City	2,024.02	929.0752	1,113	6.55
+ Portland	2,122.12	847.5187	1,001	6.65
+ Salem	4,251.81	1,697.8039	2,104	6.28
+ W. Linn	2,181.81	871.0418	1,041	6.59

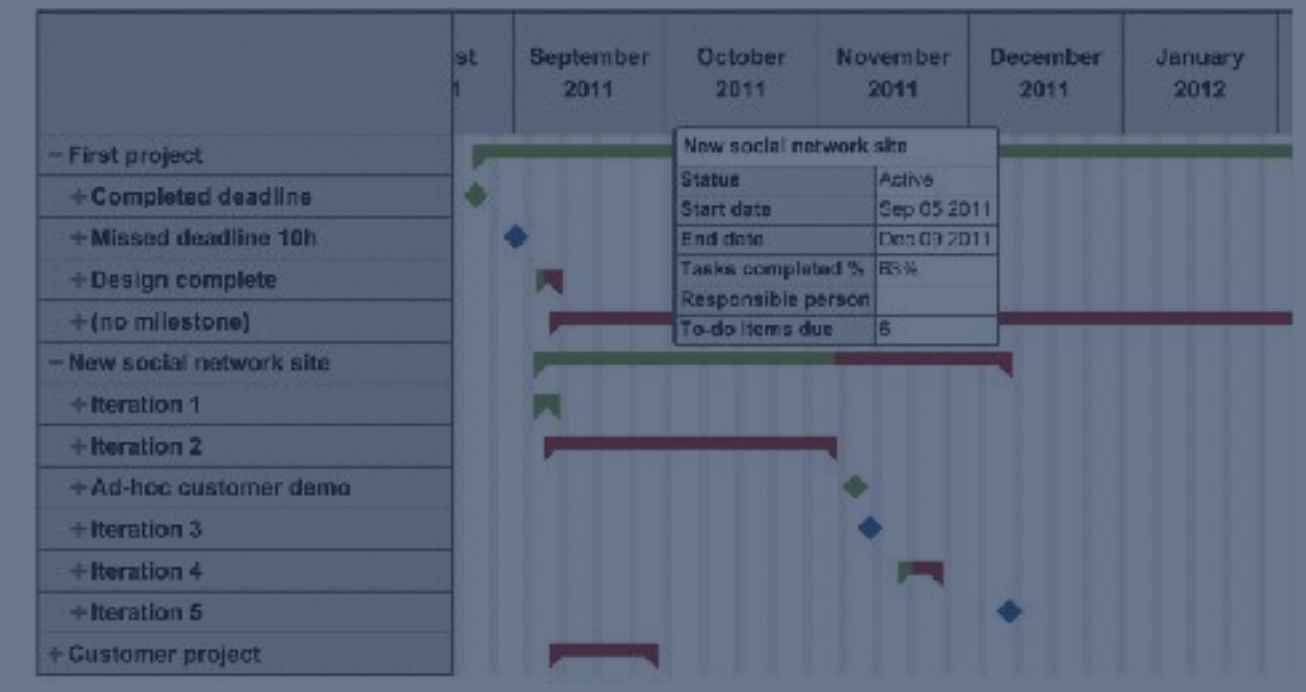
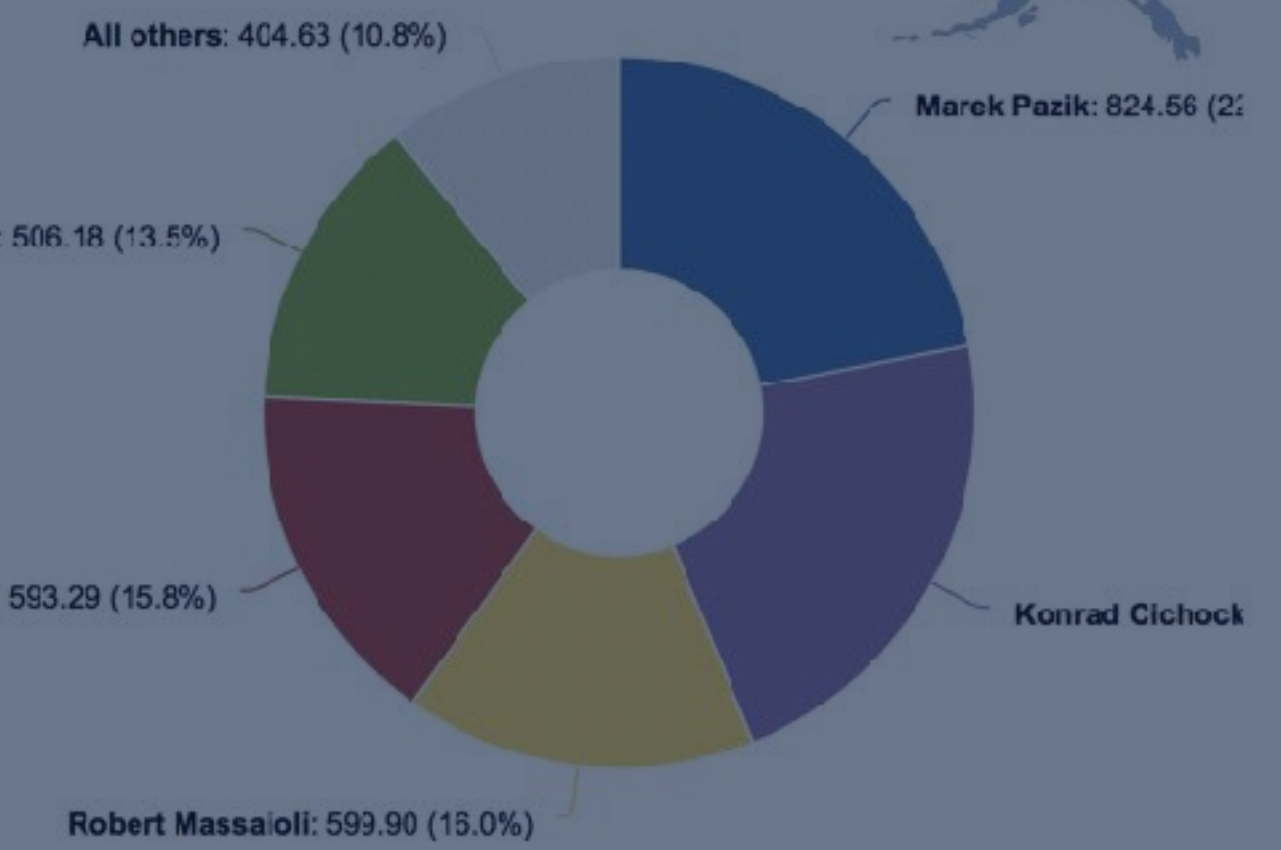
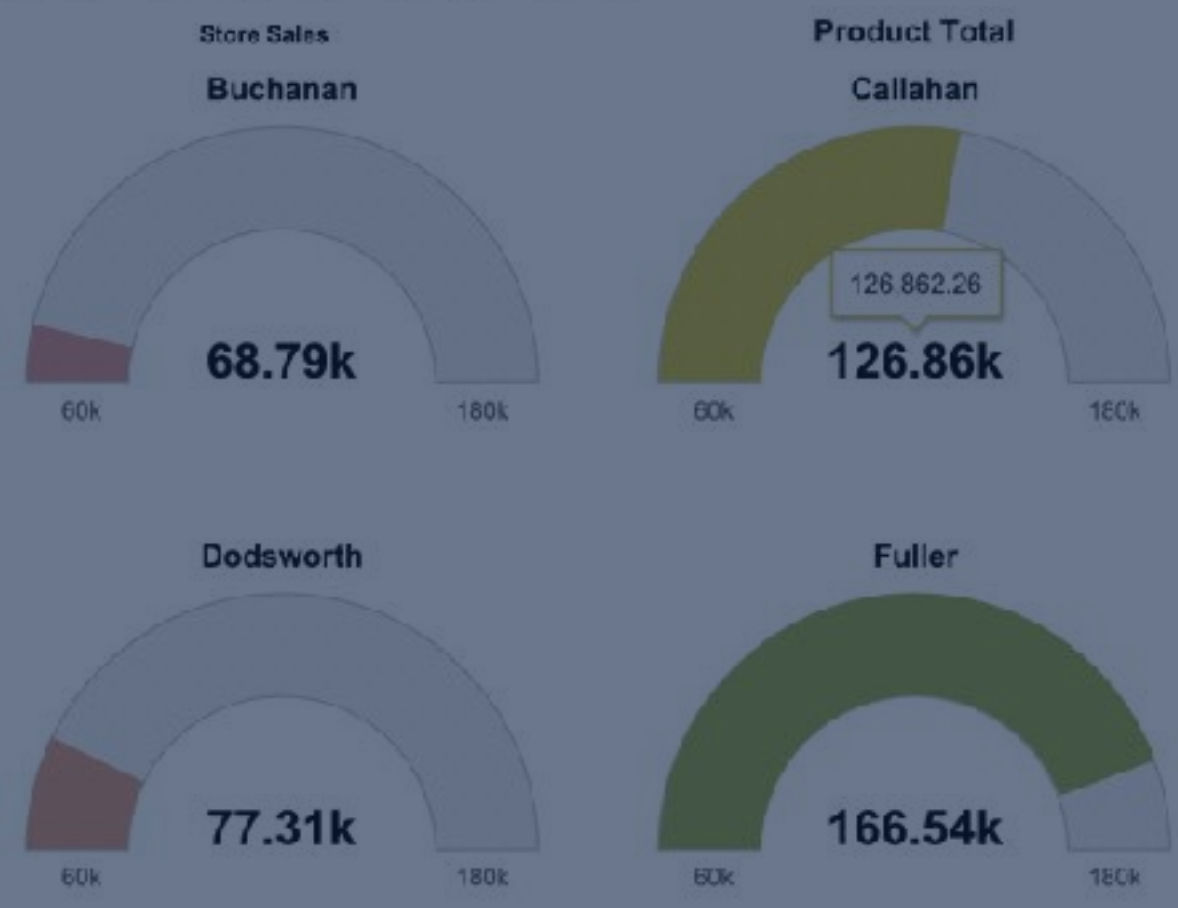
- Drill across
- Select this
- Remove
- Order by
- Top rows
- Bottom rows
- Filter rows
- Call formatting

- Time
 - Year
 - Quarter
 - Month
 - Day
 - Weekly
 - Year
 - Week
 - Day
 - Fiscal
 - Year
 - Quarter
 - Month
 - Day



Demonstration

Additional custom fields



Custom
fields

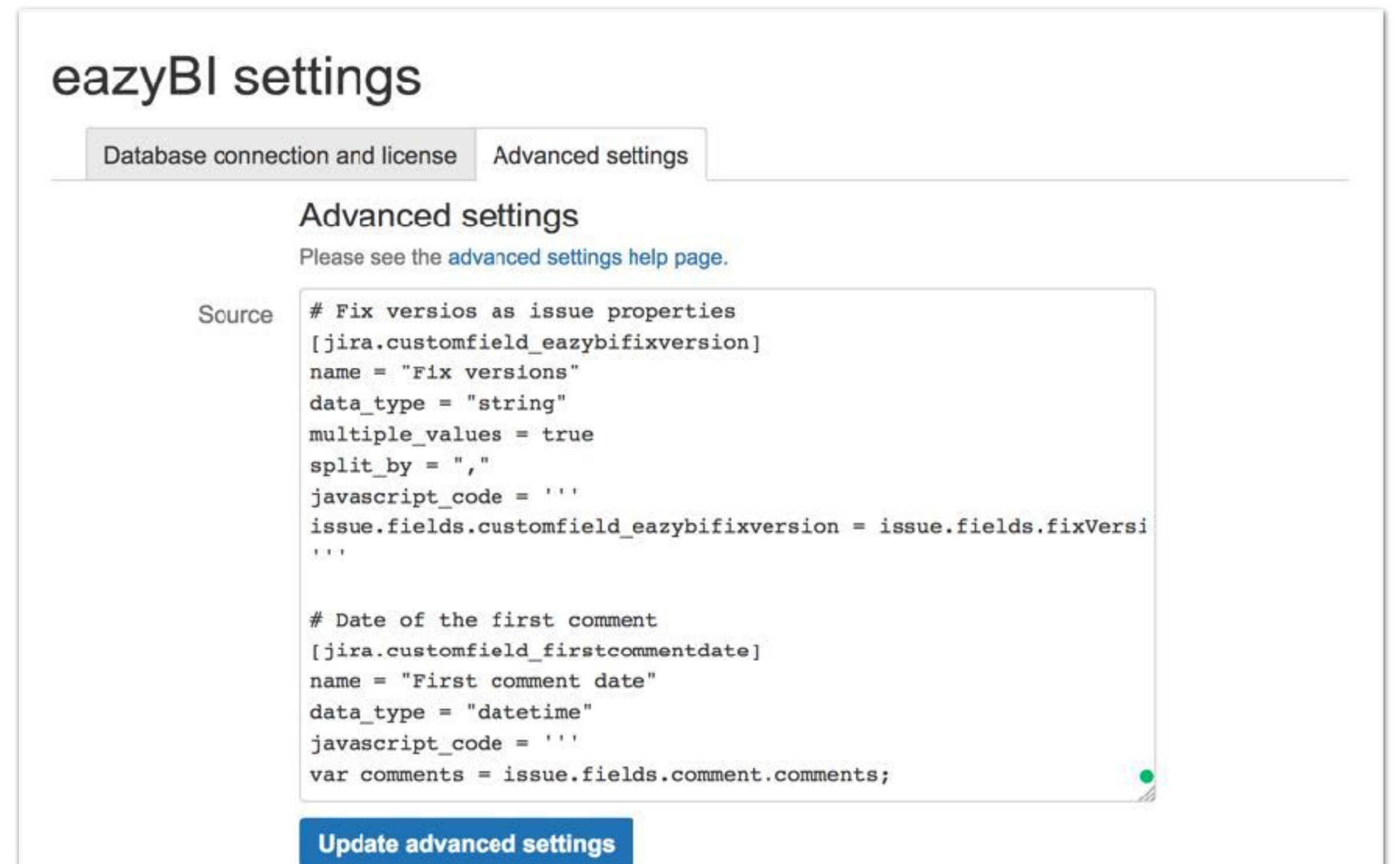
Settings

Jira Misc

JavaScript

Advanced settings for custom fields

[https://docs.eazybi.com/display/EAZYBIJIRA/
Advanced+settings+for+custom+fields](https://docs.eazybi.com/display/EAZYBIJIRA/Advanced+settings+for+custom+fields)



The screenshot shows the 'eazyBI settings' interface. At the top, there are two tabs: 'Database connection and license' and 'Advanced settings', with the latter being selected. Below the tabs, the title 'Advanced settings' is displayed, followed by a note: 'Please see the [advanced settings help page](#).' A 'Source' label is positioned to the left of a large text area containing the following code:

```
# Fix versios as issue properties  
[jira.customfield_eazybifixversion]  
name = "Fix versions"  
data_type = "string"  
multiple_values = true  
split_by = ","  
javascript_code = '''  
issue.fields.customfield_eazybifixversion = issue.fields.fixVersi  
'''  
  
# Date of the first comment  
[jira.customfield_firstcommentdate]  
name = "First comment date"  
data_type = "datetime"  
javascript_code = '''  
var comments = issue.fields.comment.comments;
```

At the bottom of the text area, there is a blue button labeled 'Update advanced settings'.

Custom
fields

Settings

Jira Misc

JavaScript

Jira Misc calculated custom fields

[https://docs.eazybi.com/display/EAZYBIJIRA/
JIRA+Misc+Custom+Fields](https://docs.eazybi.com/display/EAZYBIJIRA/JIRA+Misc+Custom+Fields)

Edit Custom Field Details

If the search template is changed, manual reindexing must follow

Field Name Department

Description

```
<!-- @@Formula:
import com.atlassian.jira.component.ComponentAccessor;
import com.atlassian.jira.user.UserPropertyManager;

if (issue.get("assignee") != null) {
    userPropManager = ComponentAccessor.getUserPropertyManager();
    assignee = issue.getIssueObject().getAssignee();
    userproperties = userPropManager.getPropertySet(assignee);
}
```

A description of this particular custom field.

You can include HTML, make sure to close all your tags.

Search Template Free Text Searcher

Note that changing a custom field searcher may require a [re-index](#).

Custom
fields

Settings

Jira Misc

JavaScript

JavaScript calculated custom fields

[https://docs.eazybi.com/display/EAZYBIJIRA/
JavaScript+calculated+custom+fields](https://docs.eazybi.com/display/EAZYBIJIRA/JavaScript+calculated+custom+fields)

eazyBI settings

Database connection and license

Advanced settings

Advanced settings

Please see the [advanced settings help page](#).

Source

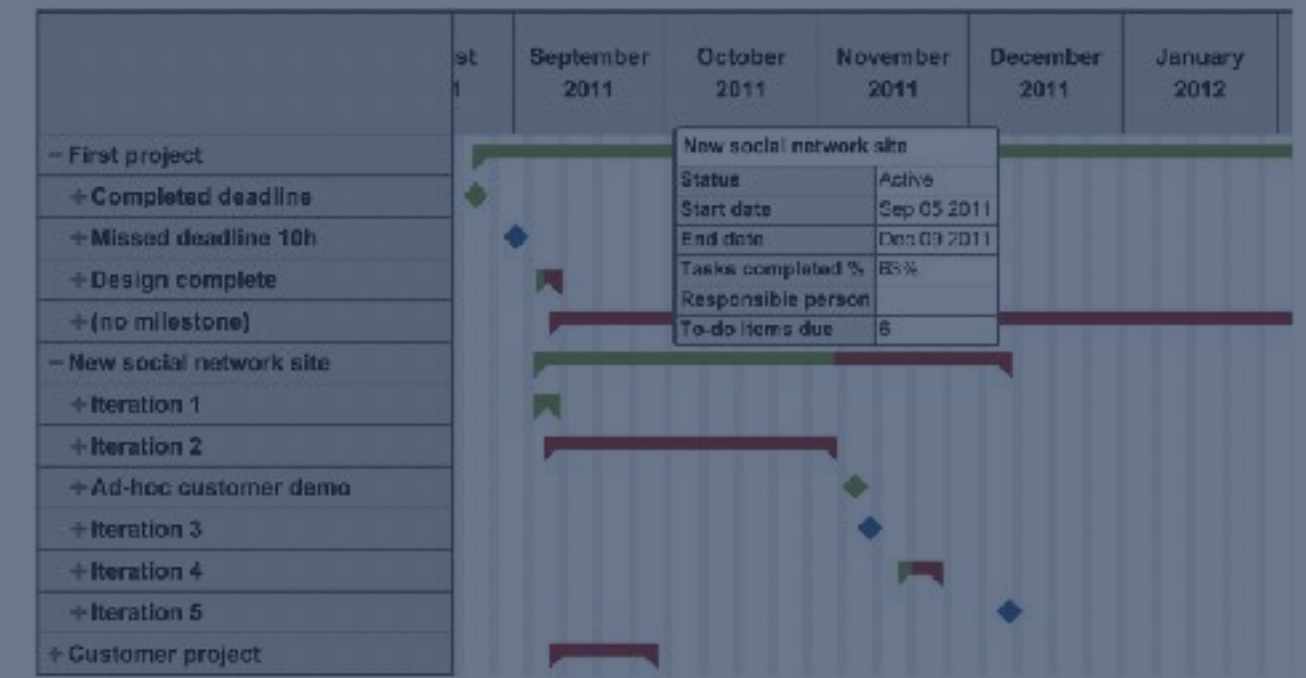
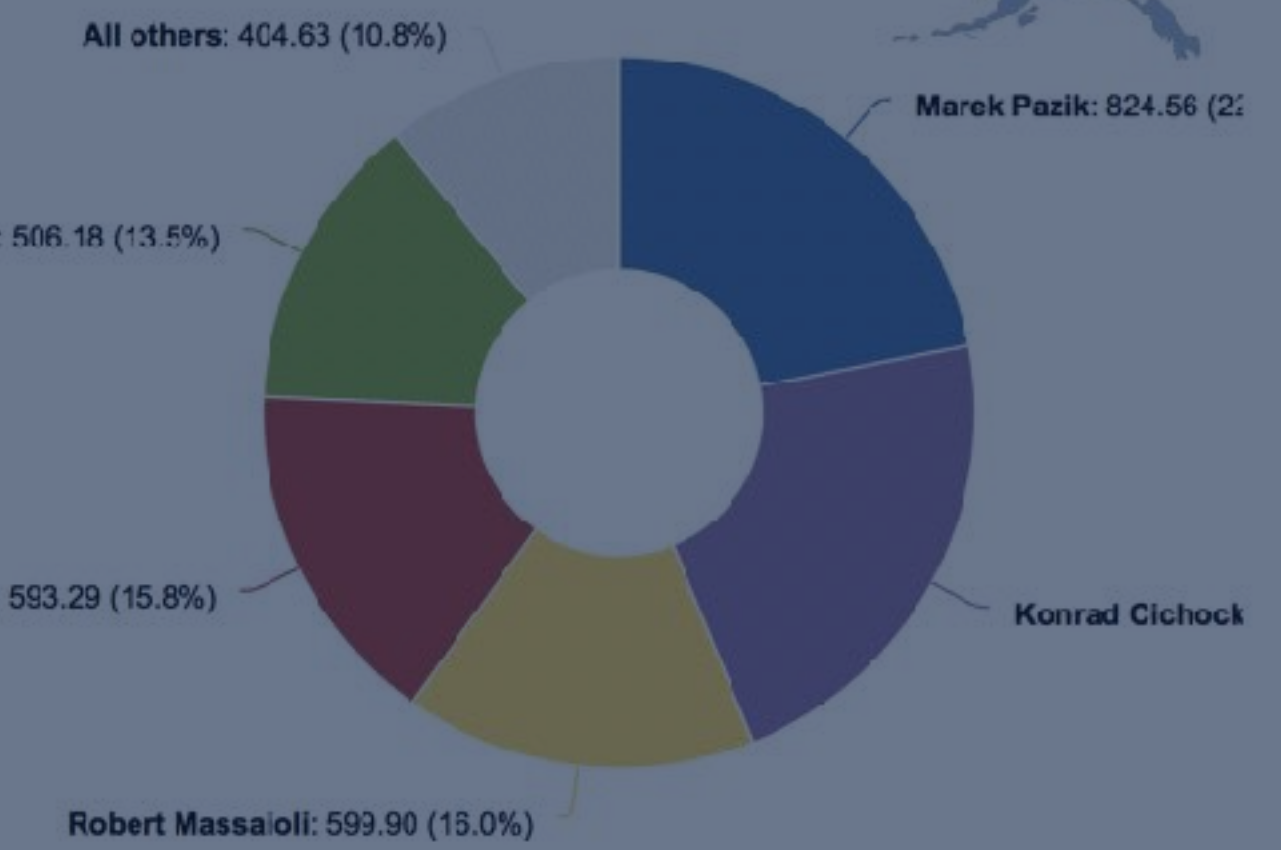
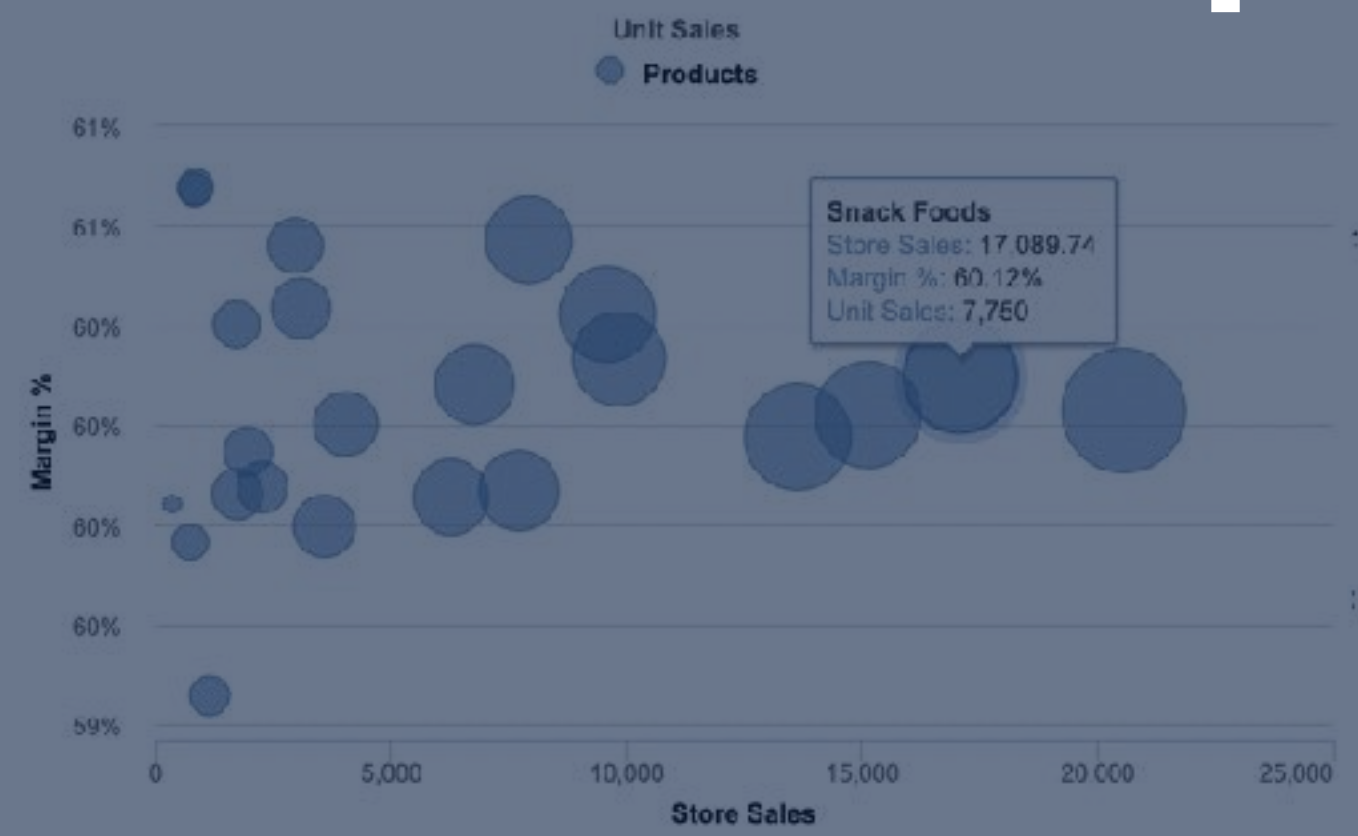
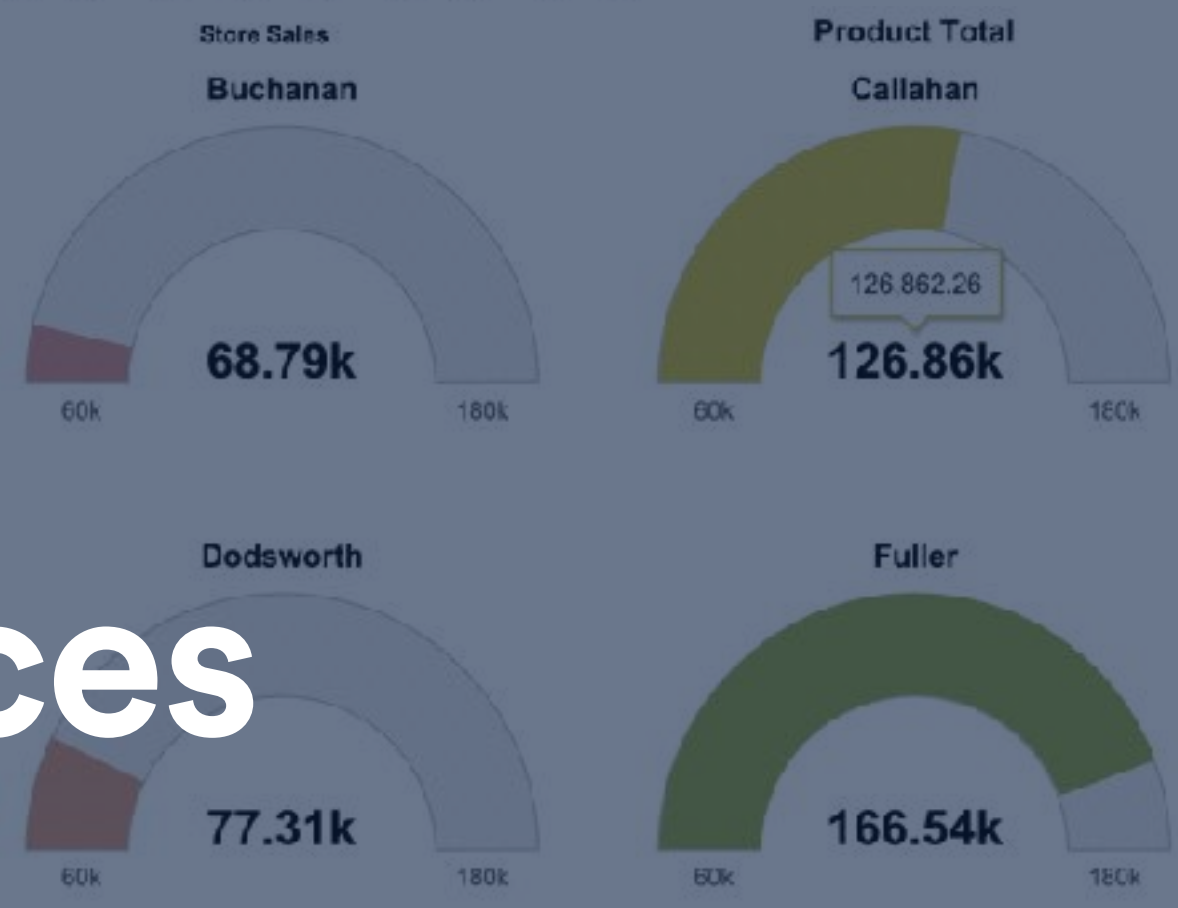
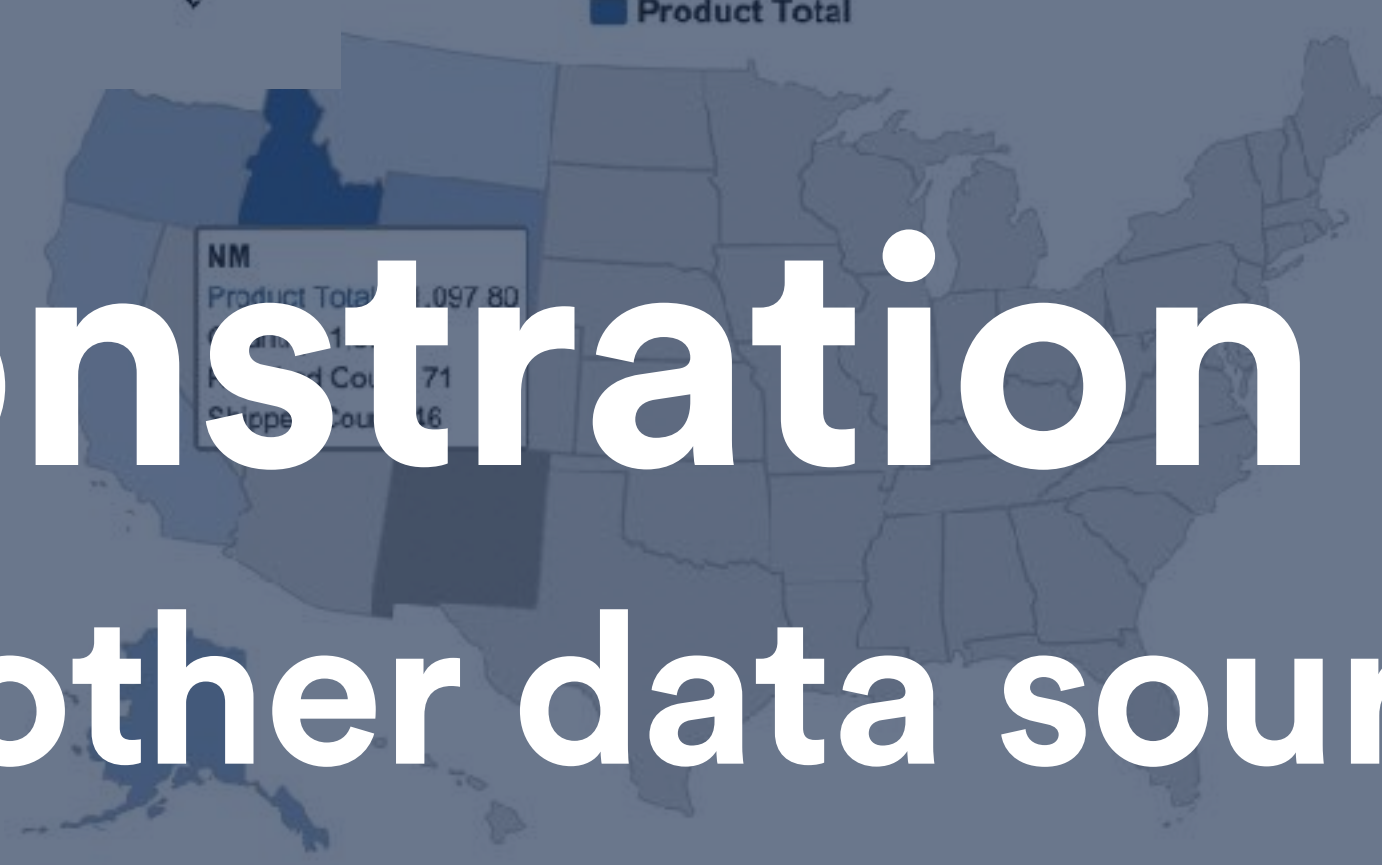
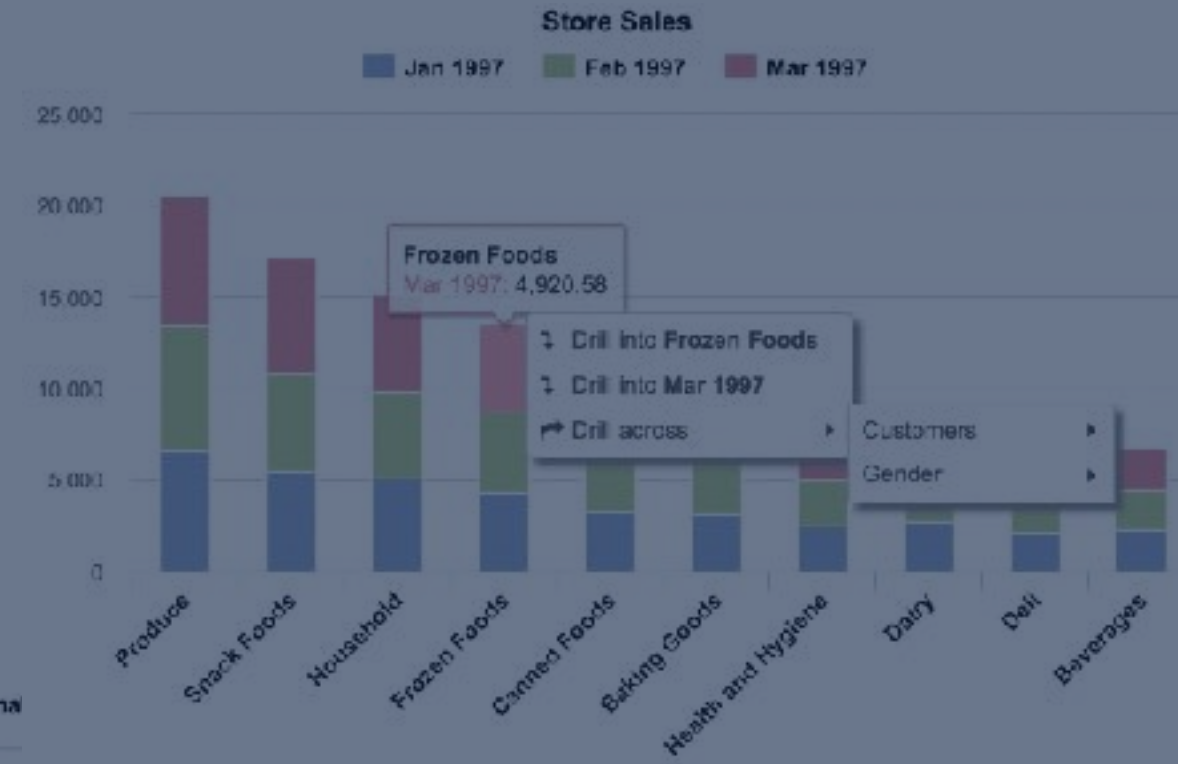
```
[jira.customfield_overdue]
name = "Issues overdue"
data_type = "integer"
measure = true
javascript_code = '''
if (issue.fields.duedate) {
  var resolutionOrCurrentTimestamp = issue.fields.resolutiondate
    Date.parse(issue.fields.resolutiondate) : (new Date).getTime()
  if (Date.parse(issue.fields.duedate) < resolutionOrCurrentTimes
    issue.fields.customfield_overdue = 1;
  }
}
'''
```

Update advanced settings

	Store Sales	Store Cost	Unit	Average
- All Customers	130,626.35	55,752.240		
- USA	130,626.35	55,752.240		
+ CA	26,175.20	14,431.085		
- OR	40,170.29	16,081.073		
+ Albany	4,491.26	1,782.817		
+ Beaverton	2,407.97	950.359		
+ Corvallis	5,695.13	2,281.248		
+ Lake Oswego	2,262.68	907.8483	1,102	6.41
+ Lebanon	5,934.62	2,390.0872	2,825	6.49
+ Milwaukie	2,802.32	1,155.6925	1,345	6.02
+ Oregon City	2,024.02	929.0752	1,113	6.55
+ Portland	2,122.12	847.5187	1,001	6.65
+ Salem	4,251.81	1,697.8039	2,104	6.28
+ W. Linn	2,181.81	871.0418	1,041	6.59

- Drill across
- Select this
- Remove
- Order by
- Top rows
- Bottom rows
- Filter rows
- Call formatting

- Time
 - Year
 - Quarter
 - Month
 - Day
 - Weekly
 - Year
 - Week
 - Day
 - Fiscal
 - Year
 - Quarter
 - Month
 - Day



Demonstration

Import from other data sources

Additional data import

Source data

Mapping

Properties

Measures

Source data for additional data import into Jira cube

<https://docs.eazybi.com/display/EAZYBIJIRA/Additional+data+import+into+Jira+Issues+cube>



SQL



Google Sheets



Excel

Additional data import


Source data

Mapping

Properties

Measures

Mapping to existing Dimensions

User_rates.xlsx  Cube: **Issues** Start Import Back to list

Please read [source files upload tutorial](#). Select at first cube (or write new name) where to import data. Then for each column review (or change) data type and enter dimension which corresponds to this column. If several columns are mapped to the same dimension several hierarchy levels then specify level name in *Level or Measure* field. For measures specify *Measures* in *Dimension* field and measure name in *Level or Measure* field. If you want column to be ignored by import then leave dimension field blank.

Header rows **1** Generate default names Hide unmapped columns < >

Field name:	User name	Rate
Data type:	string	decimal
Dimension:	Logged by	Logged by
Level or Measure:	User	User
Advanced options:	Name column Skip missing edit	Property name Rate Scale 2 edit
	Adelaida Doucette	95.00
	Ciera Oldham	65.75
	Janeth Jamieson	105.00
	Kasha Bonetti	80.00
	Levi Casebolt	110.00
	Rupert Lunde	105.00
	Anna Greenwood	95.00

Additional data import

Source data

Mapping

Properties

Measures

Import data as Properties

Field name:	project_key	total_budget
Data type:	string	integer
Dimension:	Project	Project
Level or Measure:	Project	Project
Advanced options:	Key column Skip missing edit	Property name Project Budget edit
	BDMI	10,000
	FOUI	20,000

Additional data import

Source data

Mapping

Properties

Measures

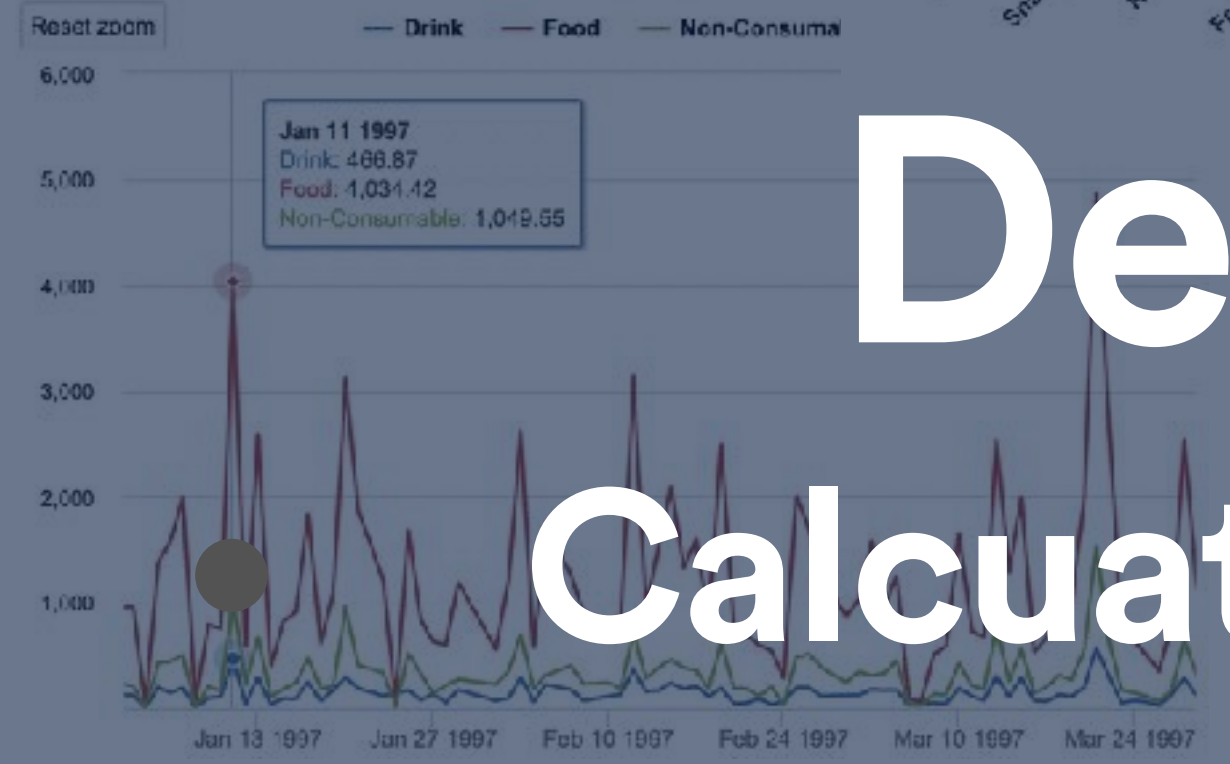
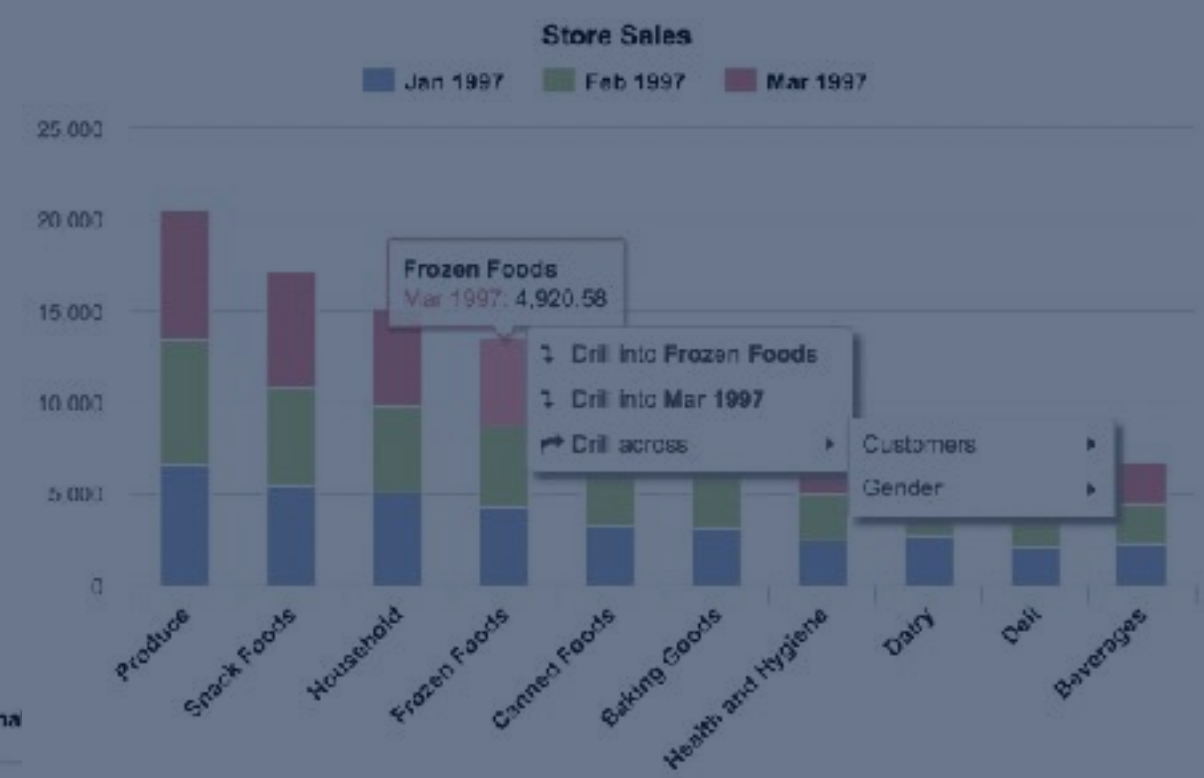
Import data as Measures

Field name:	project_key	period	monthly_budget
Data type:	string	date	decimal
Dimension:	Project	Time	Measures
Level or Measure:	Project		Monthly Budget
Advanced options:	Key column Skip missing edit		edit
	BDMI	Jan 01 2014	3,000.00
	BDMI	Feb 01 2014	4,000.00
	BDMI	Mar 01 2014	3,000.00
	FOUI	Jan 01 2014	6,000.00
	FOUI	Feb 01 2014	6,000.00
	FOUI	Mar 01 2014	6,500.00

	Store Sales	Store Cost	Unit	Average
- All Customers	130,626.35	55,752.240		
- USA	130,626.35	55,752.240		
+ CA	36,175.20	14,431.085		
- OR	40,170.28	16,081.073		
+ Albany	4,491.26	1,782.817		
+ Beaverton	2,407.97	950.359		
+ Corvallis	5,695.13	2,281.248		
+ Lake Oswego	2,262.68	907.8483	1,102	6.41
+ Lebanon	5,934.62	2,390.0872	2,825	6.49
+ Milwaukie	2,802.32	1,155.6925	1,345	6.02
+ Oregon City	2,024.02	929.0752	1,113	6.55
+ Portland	2,122.12	847.5187	1,001	6.65
+ Salem	4,251.81	1,697.8039	2,104	6.28
+ W. Linn	2,181.81	871.0418	1,041	6.59

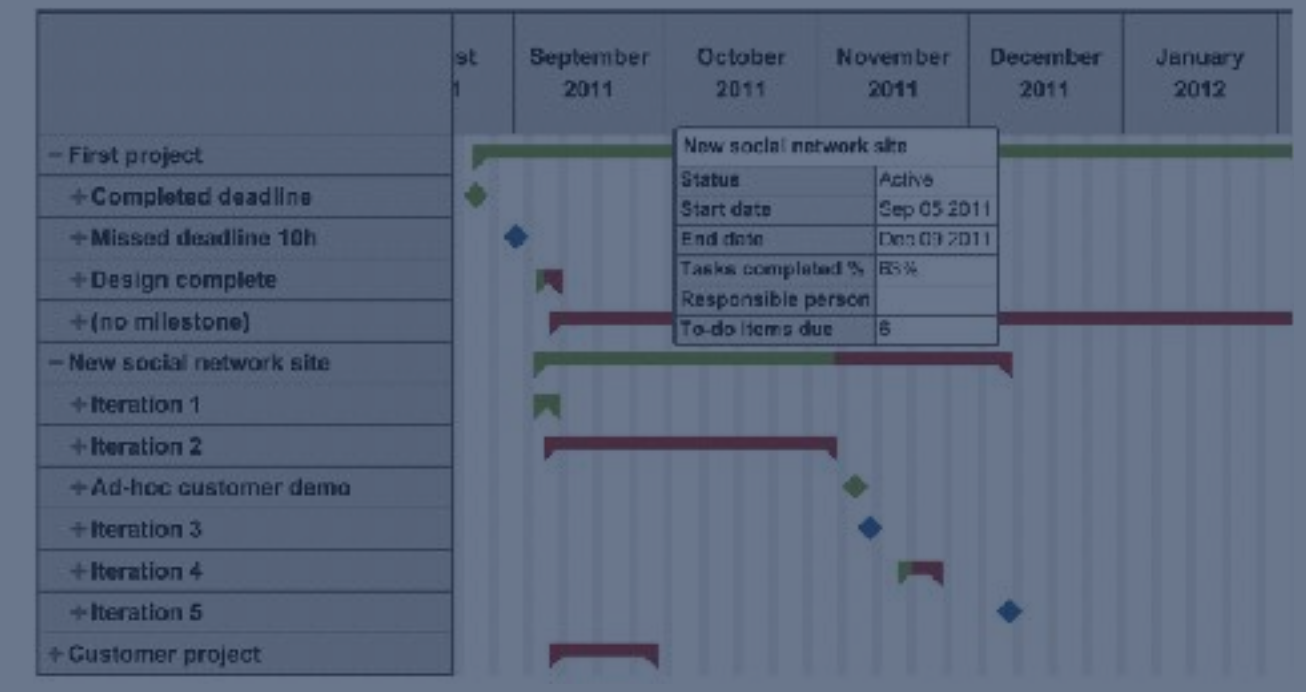
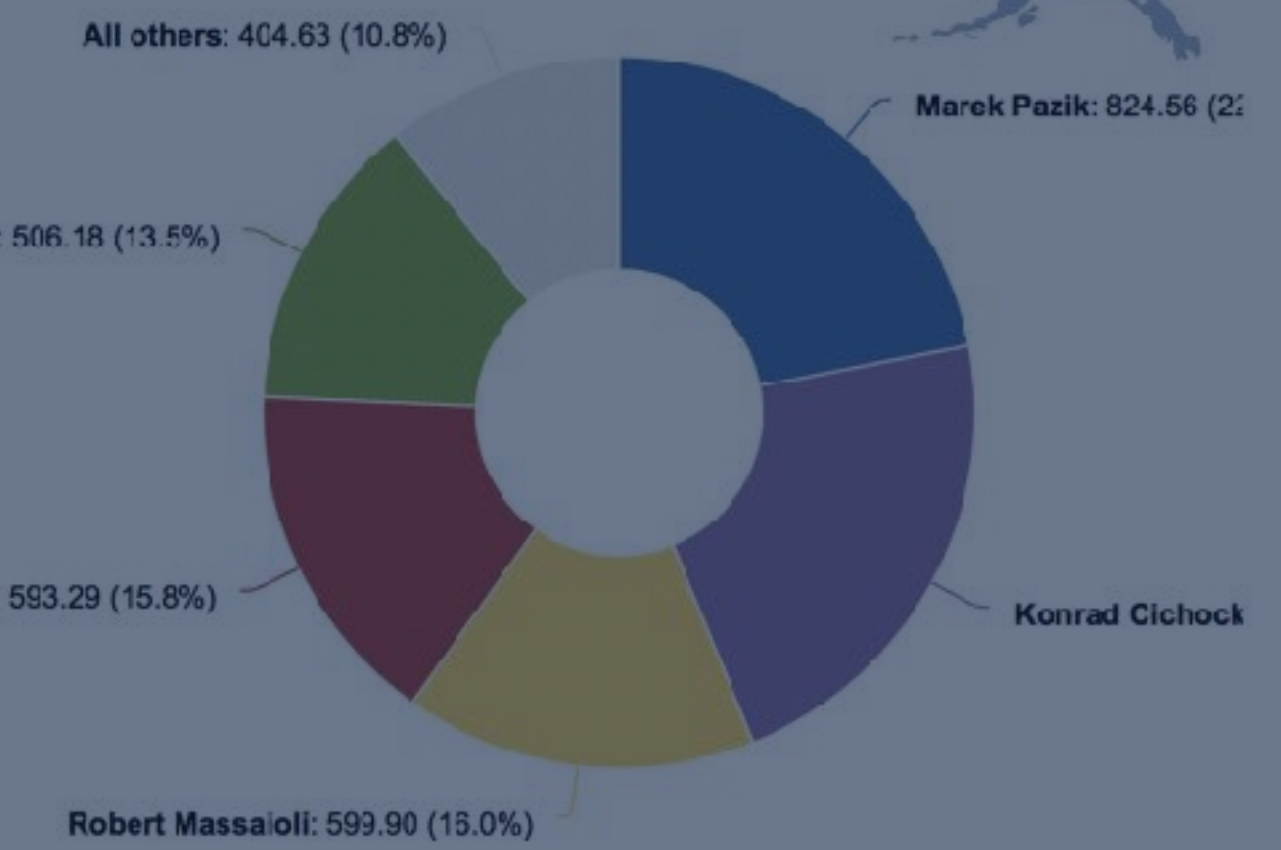
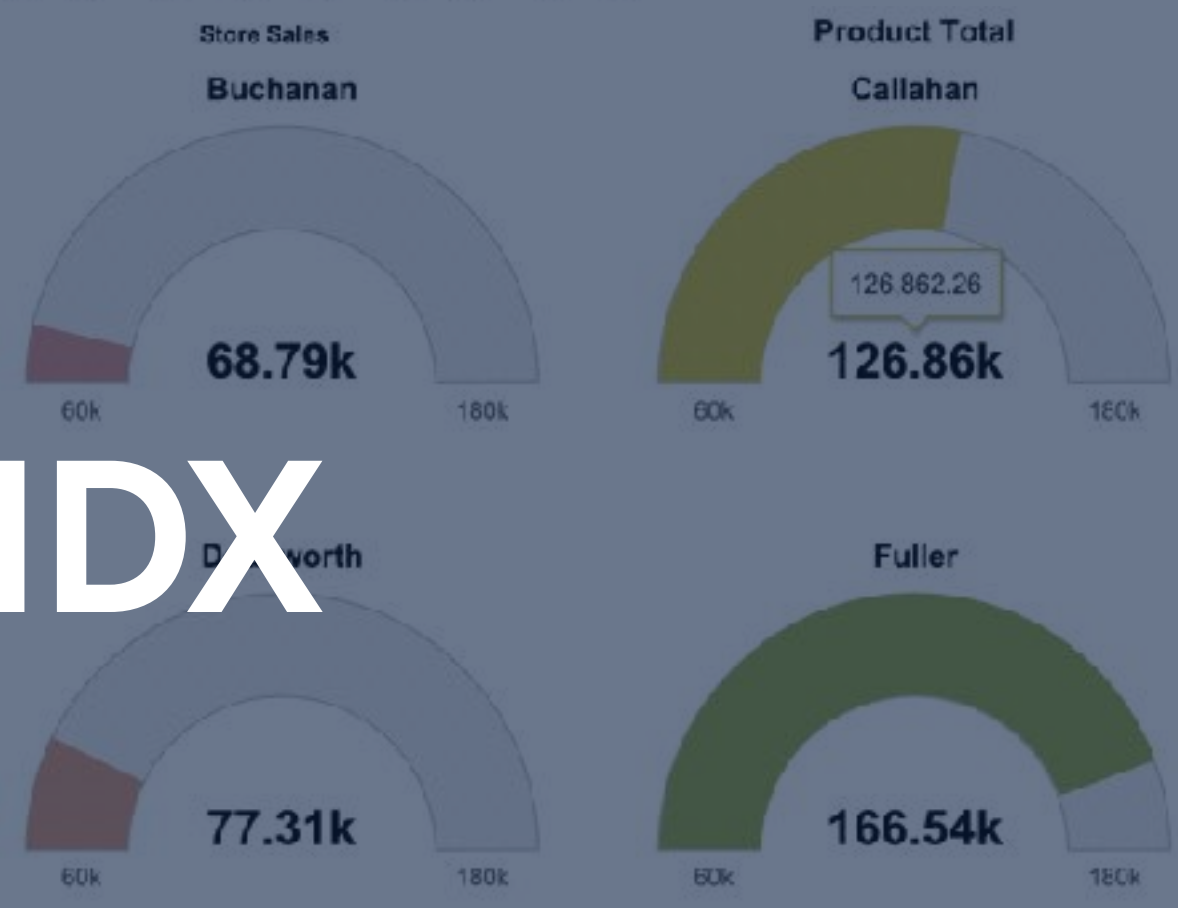
- Drill across
- Select this
- Remove
- Order by
- Top rows
- Bottom rows
- Filter rows
- Call formatting

- Time
 - Year
 - Quarter
 - Month
 - Day
 - Weekly
 - Year
 - Week
 - Day
 - Fiscal
 - Year
 - Quarter
 - Month
 - Day



Demonstration

Calculated members with MDX



**Calculated
members**

MDX

In Measures

In Dimensions

MDX language

Introduction to calculated members

[https://docs.eazybi.com/display/EAZYBI/
Calculated+members](https://docs.eazybi.com/display/EAZYBI/Calculated+members)

MDX function references

[https://docs.eazybi.com/display/EAZYBI/
MDX+Function+Reference](https://docs.eazybi.com/display/EAZYBI/MDX+Function+Reference)

eazyBI Demo account

<https://eazybi.com/accounts/1000/cubes>

**Calculated
members**

MDX

In Measures

In Dimensions

Issues change

[Measures].[Issues created]

-

[Measures].[Issues resolved]

**Calculated
members**

MDX

In Measures

In Dimensions

Issues created from total %

[Measures].[Issues created]

/

([Measures].[Issues created],

[Time].CurrentHierarchy.DefaultMember)

**Calculated
members**

MDX

In Measures

In Dimensions

Issues created from parent %

```
CASE WHEN [Time].CurrentHierarchyMember IS  
  [Time].CurrentHierarchy.DefaultMember  
THEN 1  
ELSE  
  [Measures].[Issues created] /  
  ( [Measures].[Issues created],  
    [Time].CurrentHierarchyMember.Parent )  
END
```

**Calculated
members**

MDX

In Measures

In Dimensions

Bugs created

([Measures].[Issues created],
[Issue Type].[Bug])

**Calculated
members**

MDX

In Measures

In Dimensions

Bugs created %

[Measures].[Bugs created]
/
[Measures].[Issues created]

**Calculated
members**

MDX

In Measures

In Dimensions

**Issues created in previous
period**

([Measures].[Issues created],
[Time].CurrentHierarchyMember.PrevMember)

**Calculated
members**

MDX

In Measures

In Dimensions

Issues created change %

```
CASE WHEN
  [Measures].[Issues created in previous period] > 0
THEN
  ( [Measures].[Issues created] -
    [Measures].[Issues created in previous period] )
  /
  [Measures].[Issues created in previous period]
END
```

**Calculated
members**

MDX

In Measures

In Dimensions

Cumulative issues created

```
Sum(  
  {  
    PreviousPeriods([Time].CurrentHierarchyMember),  
    [Time].CurrentHierarchyMember  
  },  
  [Measures].[Issues created]  
)
```


**Calculated
members**

MDX

In Measures

In Dimensions

Cumulative issues resolved

```
CASE WHEN
  [Measures].[Issues resolved] > 0
THEN
  Sum(
    { PreviousPeriods([Time].CurrentHierarchyMember),
      [Time].CurrentHierarchyMember },
    [Measures].[Issues resolved]
  )
END
```

Calculated
members

MDX

In Measures

In Dimensions

Cumulative issues resolved trend

```
LinRegPoint(  
  -- output x  
  DateToTimestamp([Time].CurrentHierarchyMember.StartDate),  
  -- input period  
  Filter(  
    [Time].CurrentHierarchyMember.Level.Members,  
    DateBetween([Time].CurrentHierarchyMember.StartDate,  
      '3 months ago','today')  
  ),  
  -- input y  
  [Measures].[Cumulative issues resolved],  
  -- input x  
  DateToTimestamp([Time].CurrentHierarchyMember.StartDate)  
)
```

**Calculated
members**

MDX

In Measures

In Dimensions

Average issues created in last 3 months

```
Avg(  
  LastPeriods(3, [Time].CurrentHierarchyMember),  
  [Measures].[Issues created]  
)
```

**Calculated
members**

MDX

In Measures

In Dimensions

Hours cost

```
Sum(  
  Descendants(  
    [Logged by].CurrentMember, [Logged by].[User]),  
  [Measures].[Hours spent] *  
  [Logged by].CurrentMember.get('Rate')  
)
```

**Calculated
members**

MDX

In Measures

In Dimensions

Status Open or In Progress

```
Aggregate({  
  [Transition Status].[Open],  
  [Transition Status].[In Progress]  
})
```

Calculated members

MDX

In Measures

In Dimensions

Reverted transition statuses

```
Aggregate(  
  Filter(  
    [Transition Status].[Transition Status].Members,  
    [Transition Status].CurrentMember.Name  
    MATCHES 'Re.*'  
  )  
)
```

Calculated members

MDX

In Measures

In Dimensions

Not Reverted transition statuses

```
Aggregate(  
  Filter(  
    [Transition Status].[Transition Status].Members,  
    NOT [Transition Status].CurrentMember.Name  
      MATCHES 'Re.*'  
  )  
)
```

Calculated
members

MDX

In Measures

In Dimensions

All transition statuses except Canceled

```
Aggregate({  
  Except(  
    [Transition Status].[Transition Status].Members,  
    -- set of exceptions  
    { [Transition Status].[Canceled] }  
  )  
})
```




Thank you!

Questions?



community.eazybi.com

support@eazybi.com