



# Our Global Dimension

[www.yourschoolwebsite.com](http://www.yourschoolwebsite.com)



**1540** Society Of Jesus Formed



Almost 500 Years of Jesuit Education, Tradition and Innovation



**2019 - 2029**

The Next 10 Years

Universal Apostolic Preferences



Showing The Way To God



Walking With The Excluded



Journeying With Youth



Caring For Our Common Home

## 1 Global Community

**6 Regions**  
Latin America  
North America  
Europe, South Asia  
Asia Pacific, Africa

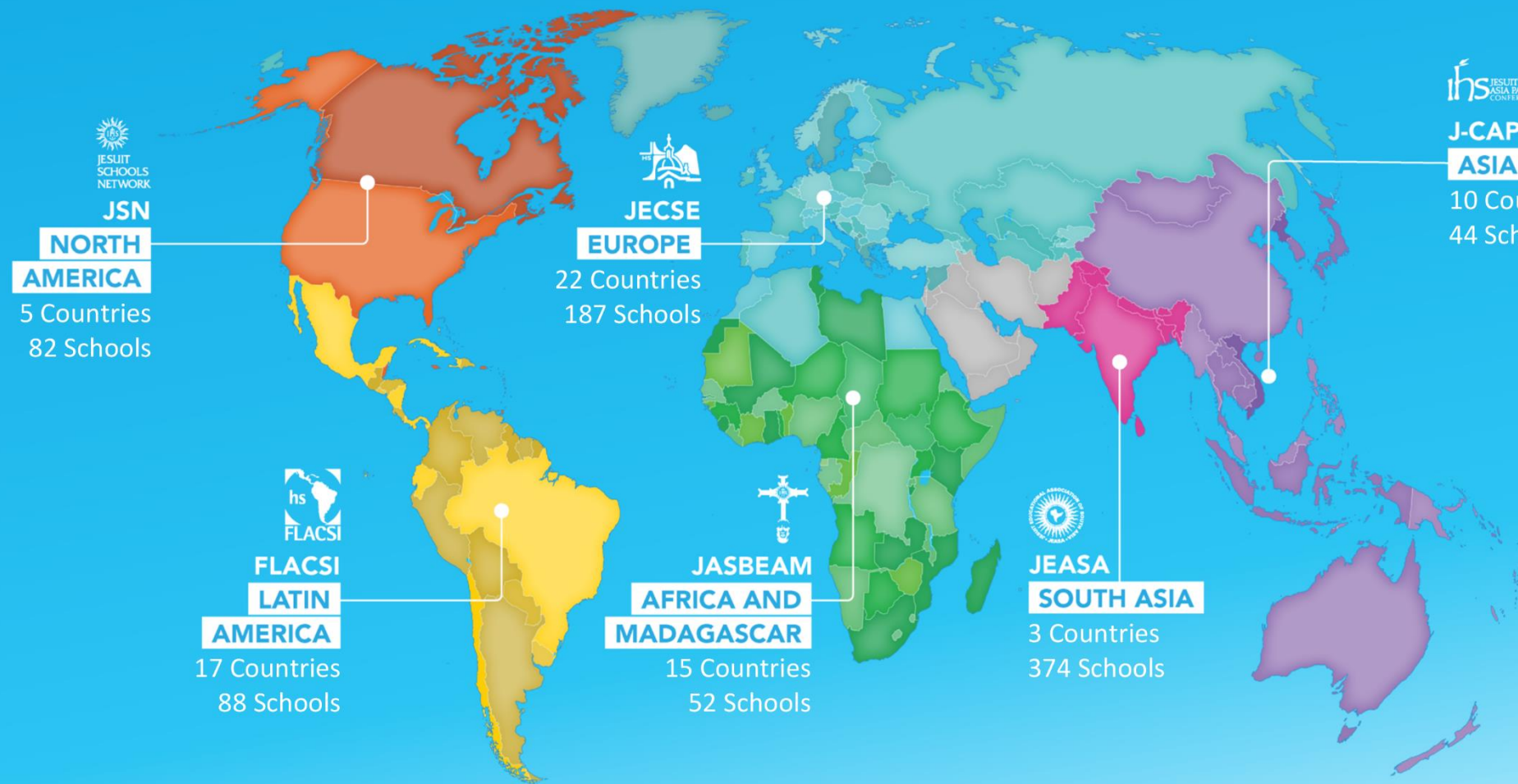
**70 Countries**



**827 Jesuit Schools**

**890,971 Students**

**82 Schools in North America** JESUIT SCHOOLS NETWORK



**FE Y ALEGRÍA**

1,613 School & Education Projects

**JRS**

**JRS**

61 School & Education Projects

## Opening Our Students' Eyes And Hearts To The World Around Them!



Global Social Justice projects



Global Connected Classrooms



Global Exchange Programme



Global Citizenship



**educate magis**

Collaborating, Empowering, Transforming.

Educate Magis is the global community of educators from Jesuit and Ignatian schools

