

LeaderKAM

KAMMPROFILE GASKETS

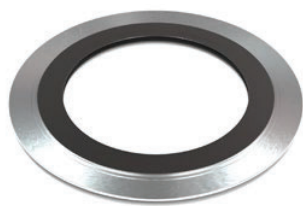
The use of kammprofile gaskets has increased enormously in recent decades – not only for the sealing of standard flanges, but also of equipment components, such as heat exchangers and containers.

LeaderKAM kammprofile gaskets with soft material layers are characterised on the one hand by a very low minimum surface pressure which is determined by the material of the support. On the other hand, the maximum permissible surface pressure is very high as this is determined by the value of the metal carrier material.

This gives the grooved gaskets with layers a very wide range of application. They are therefore almost universally applicable. The bolt force to be applied when using grooved gaskets is determined by the characteristic data of the screws.

Applications

- Flanged pipes (DIN/ANSI)
- TA-Luft
- Grooved flanges
- Heat exchanger
- Equipment
- Boilers
- High pressure



SURFACE PRESSURE LIMITS			
STYLE	TEMP. °C	min. MPa	max. MPa
KV, KV9, KB9- Steel / Stainless steel carrier			
Graphite Facing	20	20	500
	300	20	400
PTFE Facing	20	25	300
	200	25	120

Latest version of productdatasheet available on www.leadertg.com



Properties

Metal Core

- Thickness: 1,5-10 mm
- Stainless steel/steel in various grades
- Depending on the thickness of the layers, the carrier material contains the precisely defined comb-like grooves

Soft material layer

- Thickness: 0.5 mm or 1 mm
- Graphite
- PTFE
- Leadertherm NXT 1010
- Silver

Pressure

- Max. 200 bar, depending on the installation and surface pressure

Types (forms)

- Round, oval, rectangular
- With seam gaps according to drawing

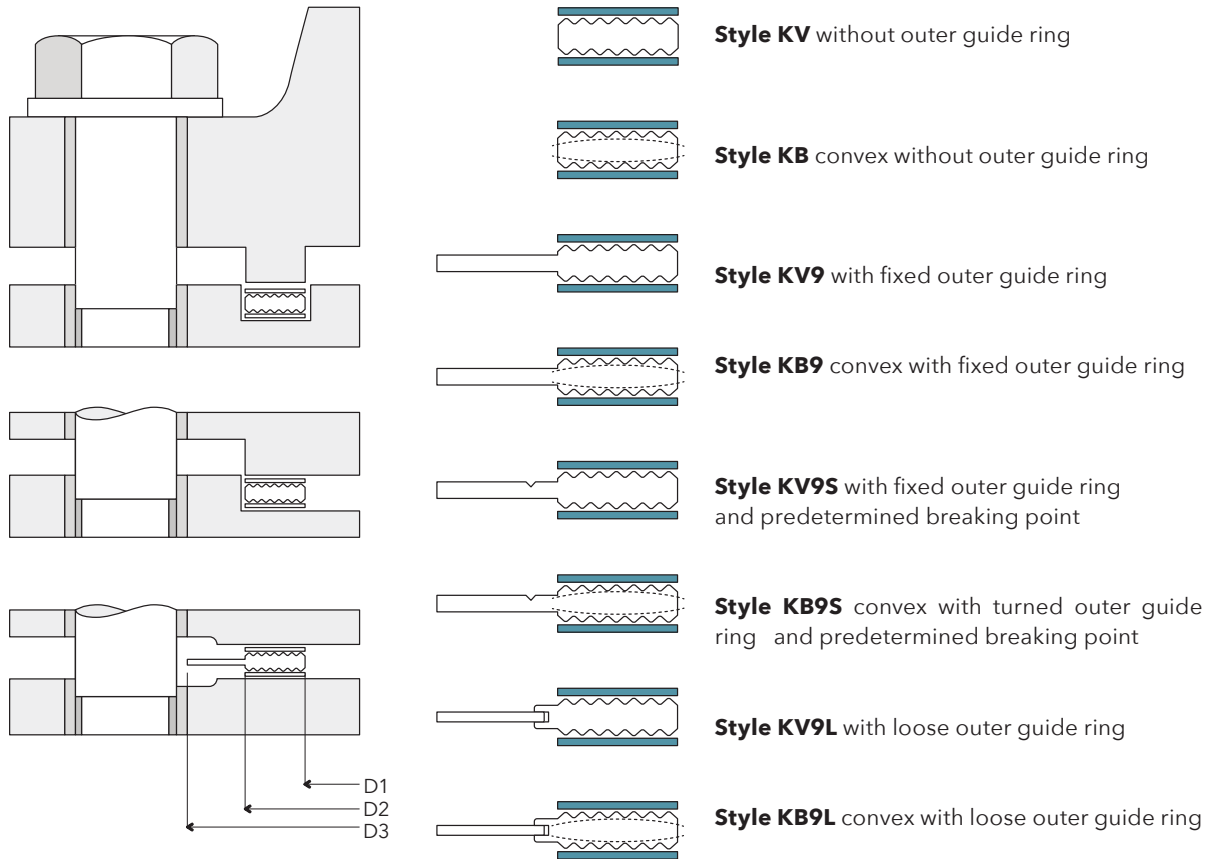
Total thickness

- Standard: 4 or 5 mm

Approvals



STYLES OF LEADERKAM KAMMPROFILE GASKET



NON-METALLIC LAYER - ASME B16.20						
Material	Minimum		Maximum		Abbreviation	Guide Ring Color Code
	°F	°C	°F	°C		
Ceramic	-350	-212	2000	1090	CER	Light Green
Flexible graphite	-350	-212	950	510	F.G.	Gray
PTFE	-400	-240	500	260	PTFE	White
LeaderTHERM NXT 1010	-350	-212	1800	1000	LT	Light Blue

COLOR CODE CHART - ASME B16.20						
Material	Minimum		Maximum		Abbreviation	Guide Ring Color Code
	°F	°C	°F	°C		
304 Stainless Steel	-320	-195	1400	760	304	Yellow
316L Stainless Steel	-328	-200	1600	870	316L	Green
317L Stainless Steel	-150	-100	1600	870	317L	Maroon
321 Stainless Steel	-320	-195	1600	870	321	Turquoise
347 Stainless Steel	-320	-195	1600	870	347	Blue
Carbon Steel	-40	-40	1000	540	CRS	Silver
20Cb-3 (Alloy 20)	-300	-185	1400	760	A-20	Black
HASTELLOY® B 2	-300	-185	2000	1090	HAST B	Brown
HASTELLOY® C 276	-300	-185	2000	1090	HAST C	Beige
INCOLOY® 800	-150	-100	1600	870	IN 800	White
INCONEL® 600	-150	-100	2000	1090	INC 600	Gold
INCONEL® X750	-328	-200	1500	820	INX	No Color
MONEL® 400	-200	-130	1500	820	MON	Orange
Nickel 200	-320	-195	1400	760	NI	Red
Titanium	-320	-195	2000	1090	TI	Purple

Other materials available on request
 * the information listed here is not claimed to be exhaustive and serves only as a guide; despite careful content control we assume no liability or guarantee for the topicality, correctness and completeness of the information provided
 ** (to 1000 °F only after consultation)