

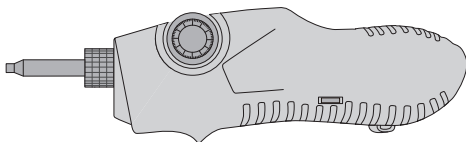
FFOI-603

400X FIBER OPTIC INSPECTION PROBE MICROSCOPE

Quick Start Guide **V1.1**

Introduction

FFOI-603 Probe Microscope offers digital function to connect the laptop directly without additional power supply. With specific driver and software, end face image can be video/captured/stored real-time. USB 2.0 supports XP, Win7, Vista system.



FFOI-603

Accessories



FC-PC-F Adapter x1



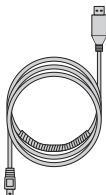
LC-PC-F Adapter x1



SC-PC-F Adapter x1



2.5PC-M Adapter x1

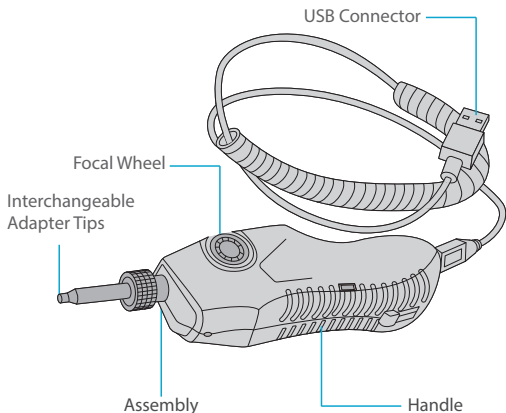


USB x1

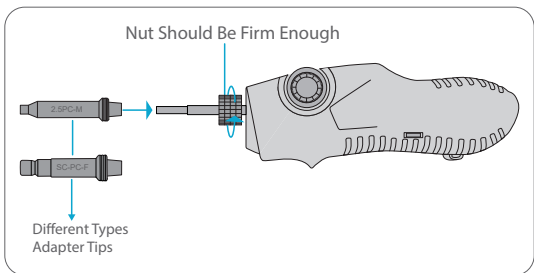
FFOI-603 fiber optic inspection can be matched with different types adapter tips. When using the adapter tip, make sure the connection between barrel assembly and adapter tip is firm enough. The table below shows each type of FFOI-603 adapter tip.

Type	Adapter Tip
2.5PC-M	Detecting optical male end face of SC FC ST and 2.5mm diameter connectors
1.25PC-M	Detecting optical male PC end face LC MU and 1.25mm diameter connectors
SC-PC-F	Detecting optical PC female end face of SC
FC-PC-F	Detecting optical PC female end face of FC
LC-PC-F	Detecting optical PC female end face of LC
SC-PC-F120	Detecting optical PC female end face of PC/APC of SC/FC LSH/LC 120 angle
MU-PC-F	Detecting optical female PC end face of MU
MT-PC-F	Detecting optical female PC end face of MT
ST-PC-F	Detecting optical female PC end face of ST
LSH-APC-F	Detecting optical female PC adapter of LSH
MPO-PC\APC-F	Detecting MPO cables connectors of PC/APC
FC-APC-F	Detecting optical female PC end face of FC
2.5APC-M	Detecting optical male APC end face LC MU and 2.5mm diameter connectors
1.25APC-M	Detecting optical male APC end face LC MU and 1.25mm diameter connectors
SC-APC-F	Detecting APC end face of SC
LC-APC-F	Detecting APC end face of LC

Function Introductions



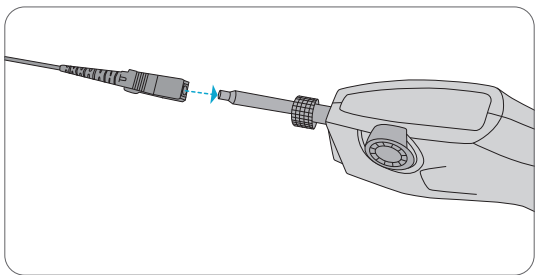
Installing



1. Hold the handle and insert the adapter tip into the lens cavity along the axial direction of lens-bar, use nut fasten it.

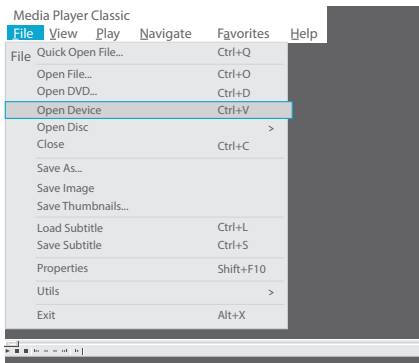


NOTE: Never crush the lens-bar during the installation. Please ensure the letter on the adapter tip right above.



2. Inserting FC Cables.

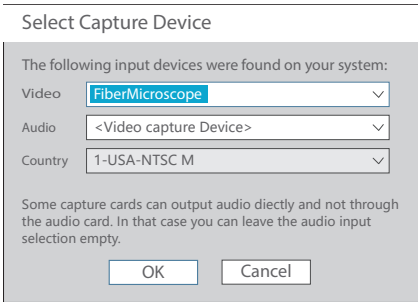
Operation Instructions



Step 1. Connect FFOI-603 fiber optic inspection to PC display and install the adapter tip that need to be tested.

Step 2. Once the blue light turns on, it means the FFOI-603 fiber optic inspection regular works.

Step 3. Put the drive disk into the computer and choose drive folder. Double-click "mplayerc. exe". If you want to collect images or dynamic documents, click "File" and "Open Device (Ctrl+V)".



Step 4. Choose "FiberMicro-scope" as video option. No need to change audio option.

Step 5. Click "OK", end the installation. You can observe the status of the inspection.

Maintenance

- (1) Keep using one type of adapter to avoid excess loss from different adapters.
- (2) Choose the correct fiber connector before testing.
- (3) Take out the batteries when not in use.

Online Resources

- Download <https://www.fs.com/download.html>
- Help Center https://www.fs.com/service/help_center.html
- Contact Us https://www.fs.com/contact_us.html

Product Warranty

FS ensures our customers that any damage or faulty items due to our workmanship, we will offer a free return within 30 Days from the day you receive your goods.



Warranty: All Fiber Optic Inspections enjoy 1 year limited warranty against defect in materials or workmanship. For more details about warranty, please check at <https://www.fs.com/policies/warranty.html>



Return: If you want to return item(s), information on how to return can be found at https://www.fs.com/policies/day_return_policy.html

Q.C. PASSED