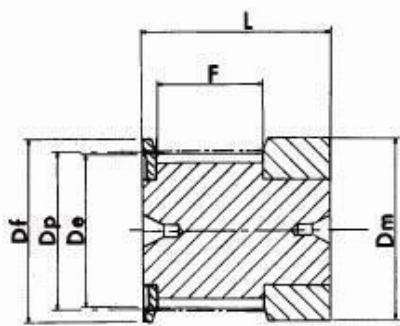
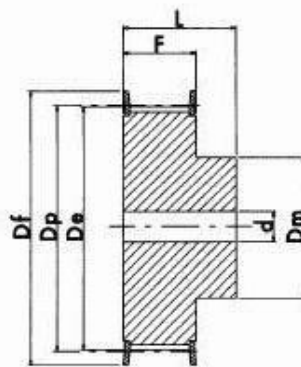


# Synchroflex Timing Pulleys T2.5

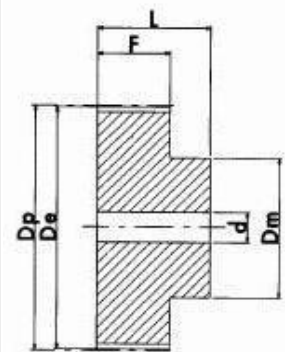
for 6mm wide belt  
Centre drilled or Pilot Bore  
in Aluminium with Zinc plated Steel Flanges



EXECUTION 0F



EXECUTION 1F



EXECUTION 2

### Dimensions

Please note : All dimensions subject to change.  
Pulleys may be Bored or Unbored.

If a dimension is critical to your application please contact our sales department for confirmation.  
for special pulleys or reworked pulleys please contact our manufacturing department

Code	Type	No. Teeth	Dp	De	Df	Dm	F	L	Pilot Bore	No. Flanges
16T2.5/10-2	0F	10	7.96	7.45	10	10	9	16	3	2
16T2.5/12-2	0F	12	9.55	9.00	12	12	9	16	3	2
16T2.5/14-2	0F	14	11.14	10.60	14	14	9	16	3	2
16T2.5/15-2	0F	15	11.94	11.40	15	15	9	16	3	2
16T2.5/16-2	0F	16	12.73	12.20	16	16	9	16	4	2
16T2.5/18-2	1F	18	14.32	13.80	17	10	10	16	4	2
16T2.5/19-2	1F	19	15.12	14.60	18	10	10	16	4	2
16T2.5/20-2	1F	20	15.92	15.40	19	12	10	16	4	2
16T2.5/22-2	1F	22	17.51	17.00	20	14	10	16	4	2
16T2.5/24-2	1F	24	19.10	18.55	22	14	10	16	4	2
16T2.5/25-2	1F	25	19.89	19.35	23	14	10	16	4	2
16T2.5/28-2	1F	28	22.28	20.15	25	14	10	16	4	2
16T2.5/30-2	1F	30	23.87	21.75	27	16	10	16	6	2
16T2.5/32-2	1F	32	25.46	23.35	28	16	10	16	6	2
16T2.5/36-2	1F	36	28.65	24.95	31	20	10	16	6	2
16T2.5/40-2	1F	40	31.83	28.15	35	22	10	16	6	2
16T2.5/48-0	2	48	37.70	37.70	-	26	10	16	6	0
16T2.5/60-0	2	60	47.75	47.25	-	34	10	16	8	0