

## FEATURES

- Rated currents up to 10A
- Quick connect(6.3\*0.8mm)
- There are a variety of parts and combinations to meet different customer's EMC tests
- Customized products according to customer's requirements

## RS PRO EMI FILTER

RS Stock No.: 237-8659,237-8660



RS Professionally Approved Products bring to you professional quality parts across all product categories. Our product range has been tested by engineers and provides a comparable quality to the leading brands without paying a premium price.

### Product Description

- **Portable electrical and electronic equipment**
- **Single-phase power supply , switch-mode power supply**
- **Medical equipment**
- **Small and medium-sized machines and household equipment etc**

### General Specifications

**Available with fuse holder for two (5\*20mm) fuses**  
 (R5) types comply with the requirements of IEC/EN60601-1 for safety clearance, leakagecurrent and hipot testing. There are a variety of parts and combinations to meet different customer's EMC tests. Customized products according to customer's requirements

### Mechanical Specifications

size	60X28X32.5mm (L X W X H)
weight	0.052kgs

### Electrical Specifications

Rated Voltage Max.	115/250VAC
Operating frequency	50/60Hz
Rated currents	2A
Hipot Rating	L-N 500VDC, L/N-G 2250VDC

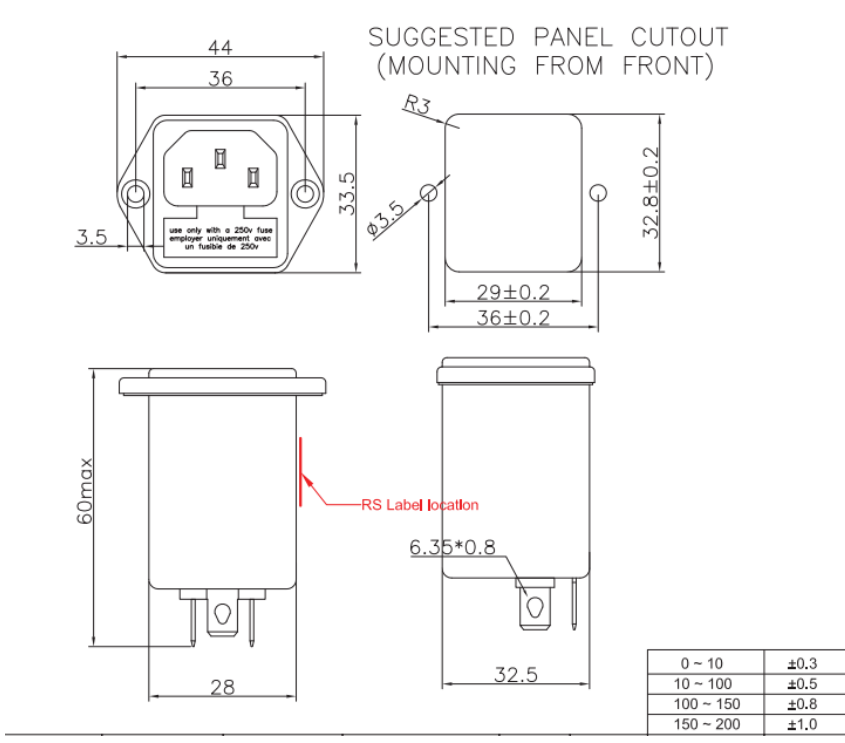
### Protection Category

**according to IEC 60529 IP40**

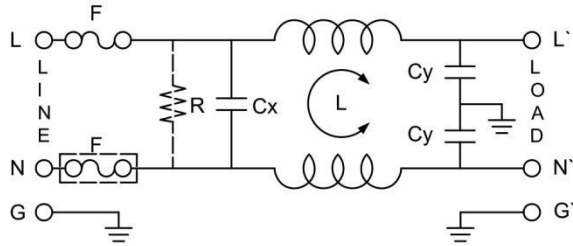
**Approvals**

<i>Declarations</i>	UL;TUV;CE;CQC;
<i>Standards Met</i>	UL1283, CSA C22.2 No.8; IEC/EN 60939; CQC GB 15288/GB 15287-2008

**Physical Dimensions:**



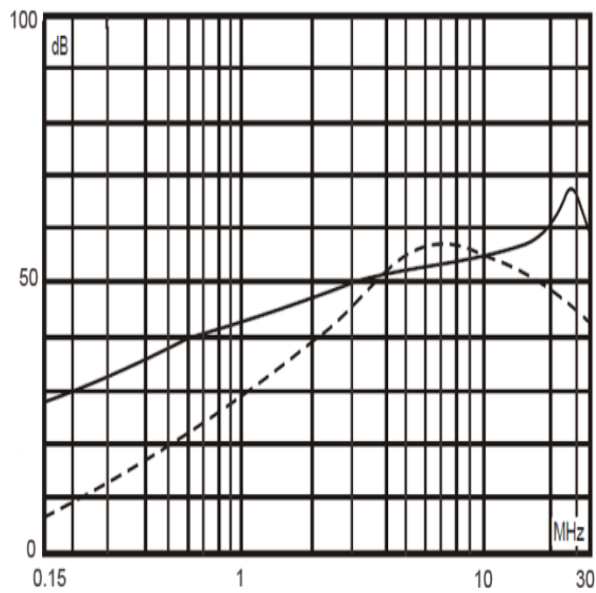
**Electrical Schematic:**



Insertion loss table(In 50ohm system according IEC/CISPR No.17)

———— Common mode      - - - - - Differential mode

2A



# Power Line Filters

packaging

