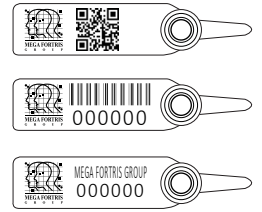
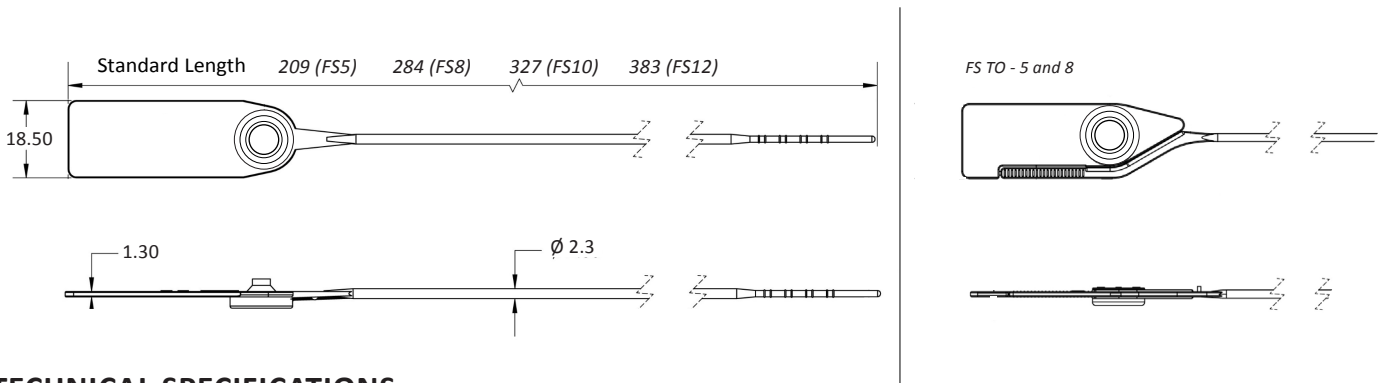


LASER MARKING OPTION



- 1** The Fast Seal is moulded with Polypropylene (PP) or high-impact Nylon (NY) material with encapsulated metal lock for greater security and clear tamper-evidence.
- 2** One-way locking mechanism is embedded for fast and easy application.
- 3** Irreversible identifiers such as name, logo, barcode, serial number and QR code are laser-marked on the flap.
- 4** Biodegradable additives for plastic material are available.
- 5** Different strap lengths are available to cater to different applications.
- 6** Tear-off (TO) variation available in 5" and 8" for easy removal.



TECHNICAL SPECIFICATIONS

PRODUCT - FAST SEAL (FS)

Code	Material	Locking Length	Locking Size	Tensile Strength	Marking Area	Max Marking Digits
<b>FS5</b>	<b>Plastic :</b> Polypropylene (PP) Temperature Range: -5°C to 80°C High-impact Nylon (NY) Temperature Range: -5°C to 80°C	128 mm (5 in)	Ø 2.3 mm (0.1 in)	<b>PP:</b> ≥15 kgf (≥33.1 lbf) <b>NY:</b> ≥18 kgf (≥39.7 lbf)	14 x 34 mm (0.6 x 1.3 in)	<b>Serial no : 13</b> <b>Barcode : 12</b>
<b>FS8</b>		203 mm (8 in)				
<b>FS10</b>		245 mm (10 in)				
<b>FS12</b>		301 mm (12 in)				
	<b>Metal Jaw :</b> Stainless Steel (SUS 304)					

PACKAGING

Carton	Quantity	Dimensions (mm)	Gross Weight (kg)	Volume (m <sup>3</sup> )	Standard Pastel / Solid Colours
<b>FS5</b> Inner	1000	279 x 225 x 190 (11.0 x 8.9 x 7.5 in)	2.3 - 2.65 (5.1 - 5.8 lb)	0.012 (0.4 cu.ft.)	<b>Polypropylene :</b> Body : <span>WH</span> <span>PSYL</span> <span>PSOR</span> <span>PSRD</span> <span>PSBL</span> <span>PSGN</span> Cap : <span>TRNS</span> <span>WH</span> <span>MILKY (BIO)</span> <b>Nylon :</b> Body : <span>WH</span> <span>B</span> <span>YL</span> <span>G</span> <span>RD</span> Cap : <span>TRNS</span> <span>WH</span> <span>MILKY (BIO)</span> For colour customisations, kindly contact us for further information.
<b>FS8</b> Inner		2.68 - 3.01 (5.91 - 6.64 lb)	0.014 (0.5 cu.ft.)		
<b>FS10</b> Inner		2.61 - 3.17 (5.75 - 6.99 lb)			
<b>FS12</b> Inner		3.14 - 3.25 (6.92 - 7.17 lb)			