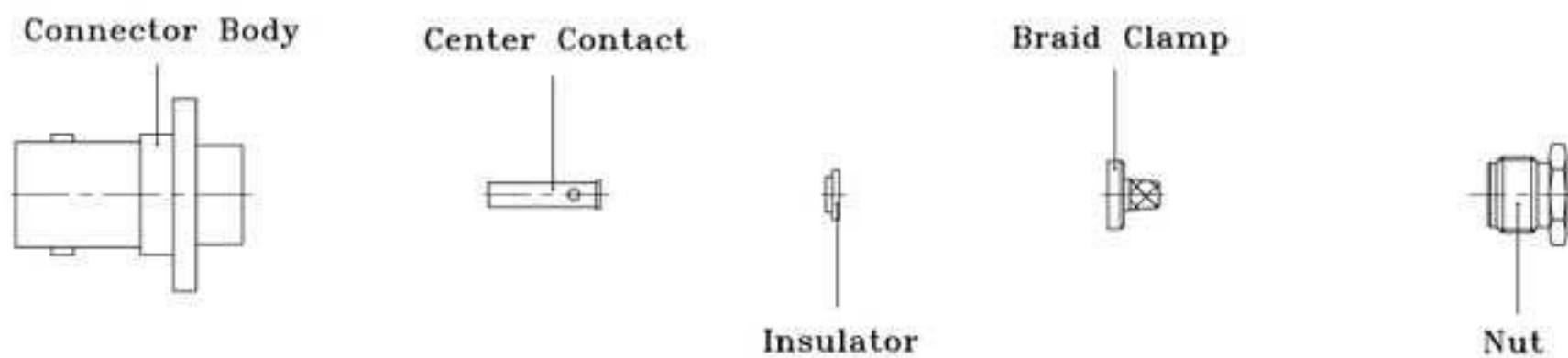


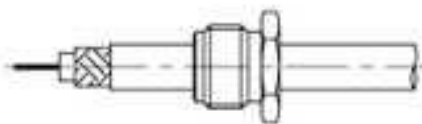


# CABLE MOUNTING INSTRUCTIONS

## ■ CM-16 for Straight Clamp Type Connectors (4)



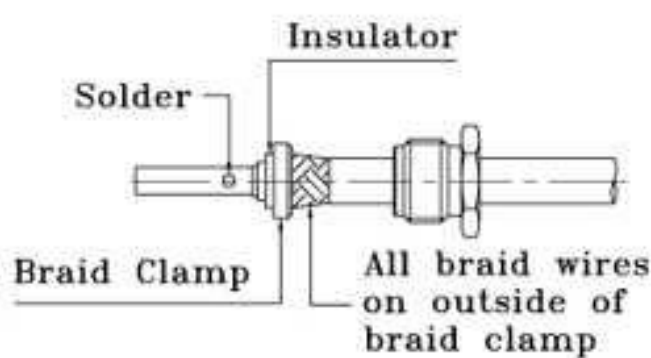
1.



### 1. Preparation of Cable

- (1) Slide nut onto cable
- (2) Strip cable to recommended dimensions shown in catalogue

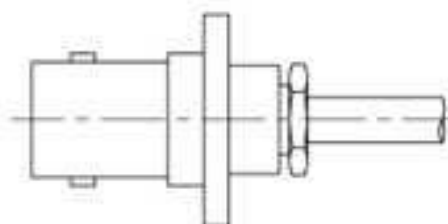
2.



### 2. Soldering of Center Contact

- (1) Flare slightly end of cable braid to facilitate insertion of braid clamp
- (2) Slide braid clamp onto cable until edge of braid clamp seat against cable jacket with all braid wires on outside of braid clamp
- (3) Slide the insulator onto cable inner conductor until seat against braid clamp
- (4) Insert cable center conductor into center contact then solder

3.



### 3. Final Assembly

- (1) Insert cable assembly and hardware into rear of connector body
- (2) Screw and tighten nut on