

## FEATURES

- Thermoplastic handles
- Zinc plated steel or stainless steel studs
- Matte black finish
- Can short term withstand +170°C
- Resistant to most chemicals, UV light and water absorption (1.5% max)
- Working temperature range of -30°C to +110°C

## RS PRO Black Multiple Lobes Clamping Knob, M12

RS Stock No.: 702-7623



RS Professionally Approved Products bring to you professional quality parts across all product categories. Our product range has been tested by engineers and provides a comparable quality to the leading brands without paying a premium price.

## Product Description

Knobs are used in a wide variety of applications in our day-to-day lives and perform many functions, from being used as fixed handles to being used to tighten, loosen, adjust and push other components or pieces of equipment. They are used in various applications, from industrial and construction machinery to audio and visual equipment.

**Female Knobs:** Zinc-plated steel: M6 x 9 (RS [7027594](#)), M8 x 12 (RS [7027598](#)), M10 x 15 (RS [7027601](#)), M10 x 15 (RS [7027605](#)), M8 x 12 (RS [7027608](#)), M12 x 8 (RS [7027614](#)). Stainless steel: M6 x 9 (RS [7027651](#)), M8 x 12 (RS [7027655](#)), M10 x 15 (RS [7027661](#)), M10 x 15 (RS [7027667](#)), M12 x 18 (RS [7027670](#)).

**Male Knobs:** Zinc-plated steel: M6 x 20mm (RS [7027579](#)), M6 x 25mm (RS [7027572](#)), M8 x 20mm (RS [7027576](#)), M8 x 30mm (RS [7027585](#)), M8 x 25mm (RS [7027588](#)), M10 x 25mm (RS [7027582](#)), M12 x 30mm (RS [7027591](#)). Stainless steel: M6 x 15mm (RS [7027627](#)), M6 x 20mm (RS [7027636](#)), M6 x 25mm (RS [7027639](#)), M8 x 20mm (RS [7027633](#)), M8 x 30mm (RS [7027642](#)), M8 x 25mm (RS [7027645](#)), M10 x 25mm (RS [7027649](#)), M12 x 30mm (RS [7027658](#)).

**Through-Thread Knobs:** Zinc-plated steel: M8 x 12 (RS [7027611](#)), M6 x 9 (RS [7027617](#)), M10 x 15 (RS [7027620](#)), M12 x 18 (RS [7027623](#)). Stainless steel: M8 x 12 (RS [7027664](#)), M6 x 9 (RS [7027673](#)), M8 x 15 (RS [7027677](#)), M12 x 18 (RS [7027683](#)), M8 x 12 (RS [7027686](#)), M10 x 15 (RS [7027689](#)).

## General Specifications

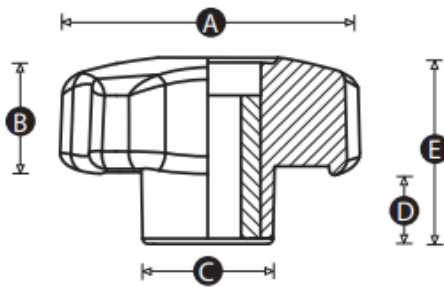
<b>Thread</b>	M12
<b>Knob Shape</b>	Multiple Lobes
<b>Mounting Type</b>	Threaded Through Hole
<b>Body Material</b>	High impact resistant thermoplastic
<b>Insert Material</b>	Steel
<b>Colour</b>	Black
<b>Finish</b>	Matt
<b>Application</b>	Access doors, Drawers & panels (domestic and industrial), Clamps and fixtures, Industrial machinery, Food preparation machinery, Medical furniture

## Mechanical Specifications

<b>Thread Diameter</b>	12mm
<b>Thread Length</b>	18mm
<b>Knob Diameter</b>	60mm
<b>Hole Diameter</b>	12mm
<b>Hole Length</b>	31mm

## Approvals

<b>Compliance/Certifications</b>	EN 61340
----------------------------------	----------



Part No.	A	B	C	D	E	Thread size	Material	Insert material
7027617	28	16	14	9	25	M6	Polypropylene	Zinc plated steel
7027673	28	16	14	9	25	M6	Polypropylene	Stainless steel
7027611	40	17	18	12	29	M8	Polypropylene	Zinc plated steel
7027677	40	17	18	12	29	M8	Polypropylene	Stainless steel
7027686	50	19	21	12	31	M8	Polypropylene	Stainless steel
7027620	50	19	21	12	31	M10	Polypropylene	Zinc plated steel
7027689	50	19	21	12	31	M10	Polypropylene	Stainless steel
7027623	60	21	12	13	34	M12	Polypropylene	Zinc plated steel
7027683	60	21	12	13	34	M12	Polypropylene	Stainless steel