

Manage your circuits from anywhere with **Indication Auxiliaries**

Indication Auxiliaries for Acti9 **NEW**

For basic and advanced applications



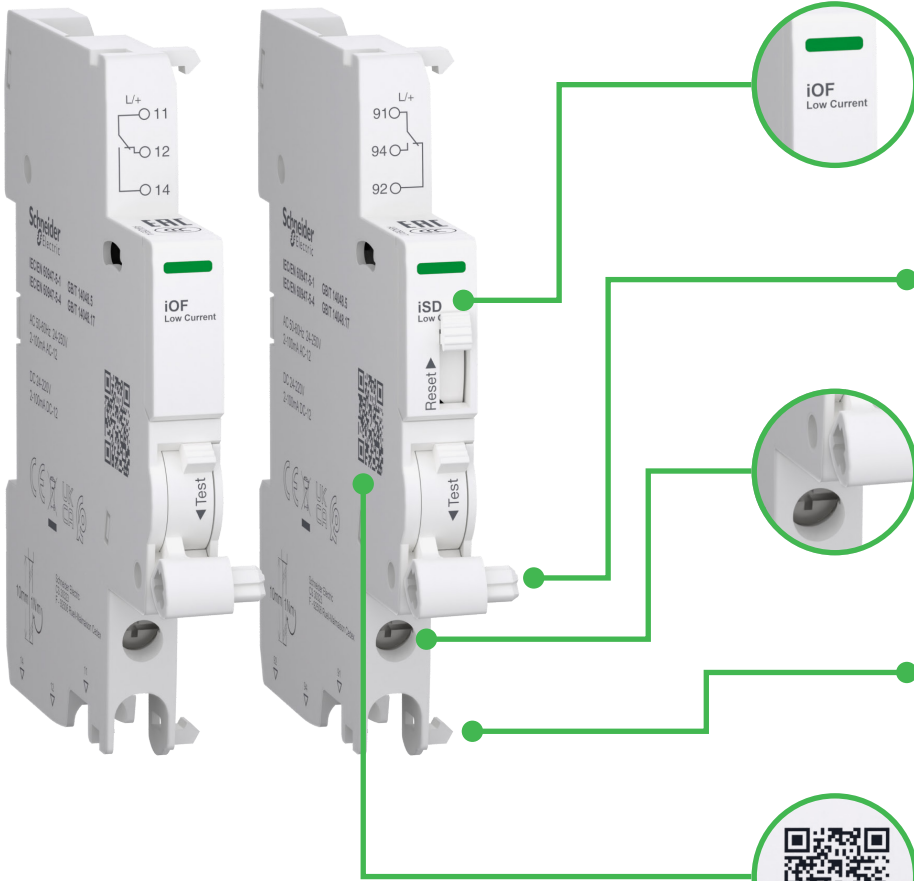
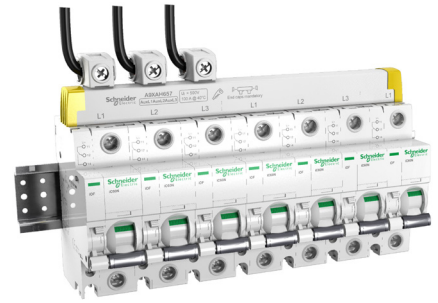
www.se.com

Life Is On

Schneider
Electric

Simplify electrical maintenance

Auxiliaries give you better monitoring of your circuits. They provide the status of a Acti9 miniature circuit breaker, using a low current version within a PLC network or a basic version when the current ≥ 100 mA.



Low current: 2 mA to 100 mA
24-220 VDC and 24-250 VAC

Compliant in harsh environment
for low current auxiliaries



Screw clamp terminal

Monitoring up to 100 protective
devices (permanently close)
under daisy chain with
low current auxiliaries



Scan the QR code to access
the technical documentation



Ability to connect from top
or bottom



How to choose the right auxiliary for your projects

Follow the steps

- 1 Your Current**
 - 2 mA to 100 mA
 - 100 mA to 6A
- 3 Type of auxiliary**
 - iOF
 - iSD
 - iSD+OF
 - iOF
 - SD
 - OF/SD+OF
- 5 Finally, choose your suitable product from the list below**

- 2 Your Range**
 - Acti9 iC60/iC40
 - Acti9 C120/C60H-DC
- 4 Position of the connection**
 - Top wiring
 - Bottom wiring
 - Top/bottom wiring

Current: 2 mA to 100 mA

NEW

In Acti9 iC60/iC40 range:

iOF	bottom wiring	A9A26914
	top wiring	A9A26915
iSD	bottom wiring	A9A26917
	top wiring	A9A26916
iSD+OF		A9A26919

In Acti9 C120/C60H-DC range:

OF	bottom wiring	A9N26914
SD	bottom wiring	A9N26917
OF/SD+OF		A9N26914 +A9N26917

Current: 100 mA to 6A

NEW

In Acti9 iC60/iC40 range:

iOF	bottom wiring	A9A26904
	top wiring	A9A26905
iSD	bottom wiring	A9A26907
	top wiring	A9A26906
iSD+OF		A9A26909

In Acti9 C120/C60H-DC range:

iOF	bottom wiring	A9N26904
SD	bottom wiring	A9N26907
OF/SD+OF		A9N26909

Refer the product images on the next page

The range of auxiliaries for your project?

Current: 2 mA to 100 mA

In Acti9 iC60/iC40 range:



A9A26914 A9A26915 A9A26916 A9A26917 A9A26919

In Acti9 C120/C60H-DC range:



A9N26914 A9N26917

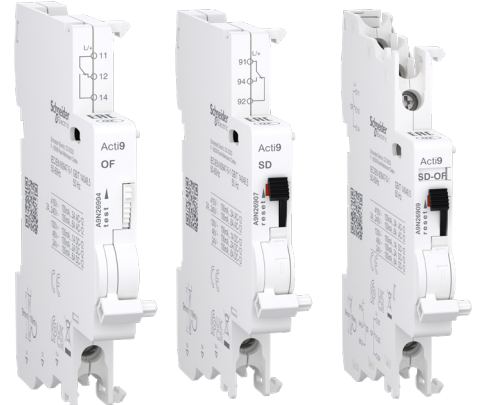
Current: 100 mA to 6A

In Acti9 iC60/iC40 range:



A9A26904 A9A26905 A9A26906 A9A26907 A9A26909

In Acti9 C120/C60H-DC range:



A9N26904 A9N26907 A9N26909

Easy integration of low current auxiliaries with

- PLC network (when I/O module need a current < 100 mA)
- EcoStruxure™ solutions for Building, Power, and Plant & Machines

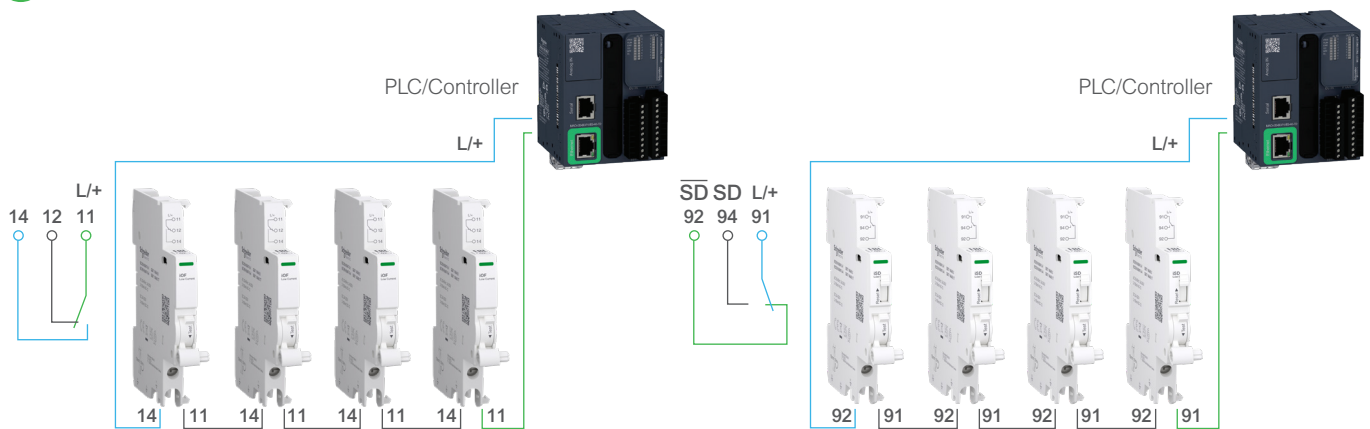
Map your circuit breaks instantly

When used with Acti9, our low current auxiliaries save time and give you peace of mind. Spot the problem immediately whenever there is a break in the circuit in your critical and industrial buildings, data centers and infrastructure.

Low current auxiliaries in daisy chain

Optimize your wiring (less wires and wiring time) inside a panel with the daisy chain architecture.

1 100 auxiliaries (OF only or SD only) are connected in series to form a daisy chain



OF model

Open/Close auxiliary contact

- Changeover contact indicates “open” or “closed” position of the device
- Remote indication of the position of the associated device

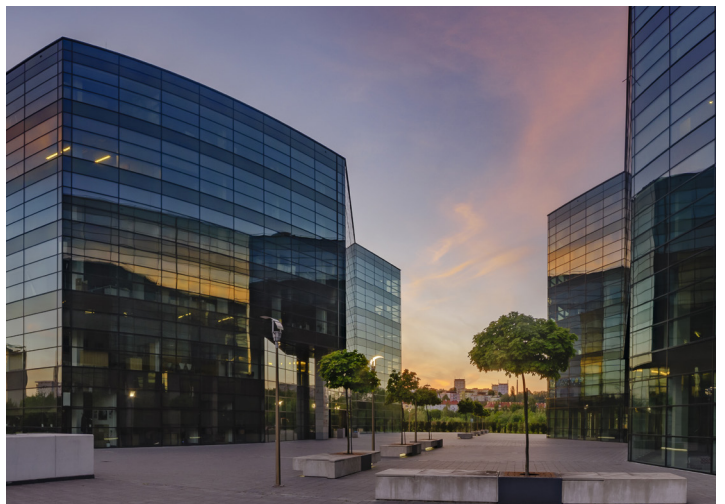
SD model

Fault indicating contact

- Changeover contact indicates the position of the device upon:
 - Electrical fault
 - Action on tripping auxiliary
- Remote indication of tripping upon a fault of the associated device

2 Any SD or OF signal opens the daisy chain

3 Once detected, status information is immediately reported to PLC or a Controller



Life Is On



www.se.com

Schneider Electric Industries SAS

35, rue Joseph Monier
CS 30323
92506 Rueil Malmaison Cedex
France

RCS Nanterre 954 503 439
Capital social 896 313 776 €
www.se.com

998-22104668_LCAA9_GMA_brochure.pdf