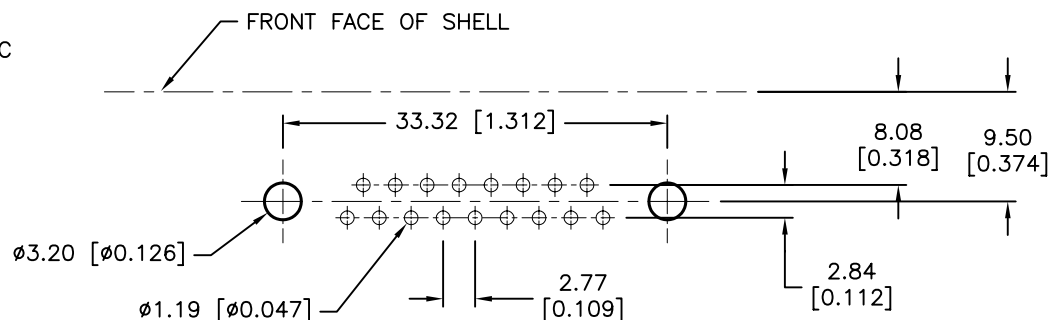
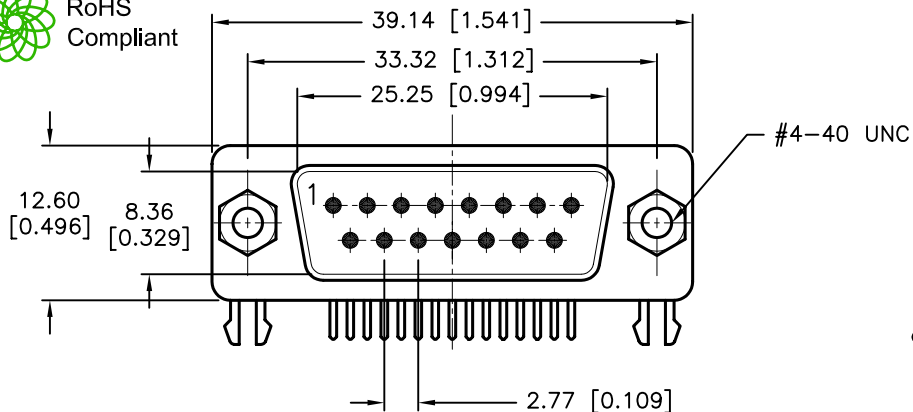


REVISIONS

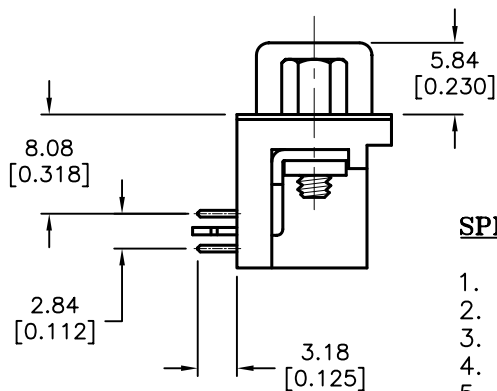
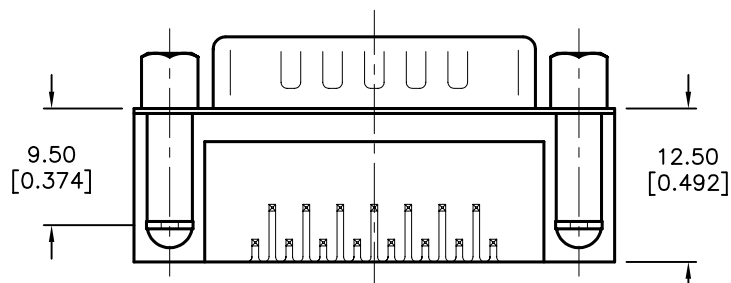
| DCP # | REV | DESCRIPTION | DRAWN | DATE | CHECKD | DATE | APPRVD | DATE |
|-------|-----|-------------|-------|----------|--------|----------|--------|----------|
| 1876 | A | RELEASED | EO | 07/25/06 | SA | 07/25/06 | HO | 07/25/06 |



RoHS Compliant



P.C.B. LAYOUT



SPECIFICATIONS:

1. Shell: Steel, Tin-Plated
2. Contact: Brass, Stamped Pin Gold-Plated
3. Insulator: PBT & Fiber-Glass Reinforced
4. Current Rating: 5 Amps
5. Dielectric Strength: 1000 V for One Minute
6. Insulator Resistance: 1000 Megohms Min. at 500V DC
7. Temperature: -50°C to +105°C

DISCLAIMER:
ALL STATEMENTS AND TECHNICAL INFORMATION CONTAINED HEREIN ARE BASED UPON INFORMATION AND/OR TESTS WE BELIEVE TO BE ACCURATE AND RELIABLE. SINCE CONDITIONS OF USE ARE BEYOND OUR CONTROL, THE USER SHALL DETERMINE THE SUITABILITY OF THE PRODUCT FOR THE INTENDED USE AND ASSUME ALL RISK AND LIABILITY WHATSOEVER IN CONNECTION THEREWITH.

TOLERANCES:

Unless Otherwise Specified
.X ±0.35 [0.014]
.XX ±0.25 [0.010]

| | |
|--------------|----------|
| DRAWN BY: | DATE: |
| EKLAS ODISH | 07/25/06 |
| CHECKED BY: | DATE: |
| SAMI ALNADI | 07/25/06 |
| APPROVED BY: | DATE: |
| HISHAM ODISH | 07/25/06 |

| | |
|---|-----------------------------|
| DRAWING TITLE: 15 Pin D-Sub R/A PCB Mount Plug 0.318" Footprint | |
| SIZE A | DWG. NO. SPC15215 |
| ELECTRONIC FILE 79K4816.DWG | REV A |
| SCALE: NTS | U.O.M.: mm [INCHES] |
| SHEET: 1 OF 1 | |