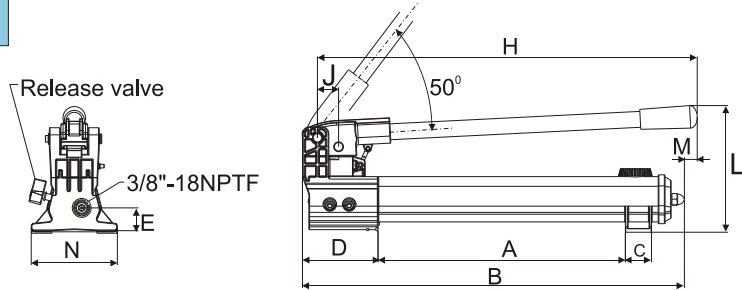


DP-392 Light Weight, Two-Speed Hand Pump

- Internal pressure relief valve for overload protection.
- Durable glass-filled nylon reservoir and nylon encapsulated aluminum pump baser for maximum corrosion resistance.
- Two speed operation reduces handle strokes by as much as 78% over single speed pumps.
- Lower handle effort to minimize operator fatigue.
- Handle lock and lightweight construction for easy carrying.
- Non-conductive fiberglass handle for operator safety.



DP-392



DP-392

DP Series Manual Pump

Light Weight / Steel hand pump

Reservoir Capacity:
400-7,400 cm³

Flow at Rated Pressure:
1.25-4.75 cm³

Maximum Operating Pressure:
700 bar



Optional Features

To add optional features to your pump, add the follow suffixes to the end of the model number.

4 ways control Valve : Model D

Example :

DPH-2000 with 4 ways control valve, order: DPH-2000D. Technical specifications for these features are available from DURAJACK.

DP Steel Hand Pump

- Internal pressure relief valve for overload protection.
- Large oil capacity, suitable for wide application.
- Two speed auto-switch reduces manpower and increase efficiency.



DP-4



DP-30



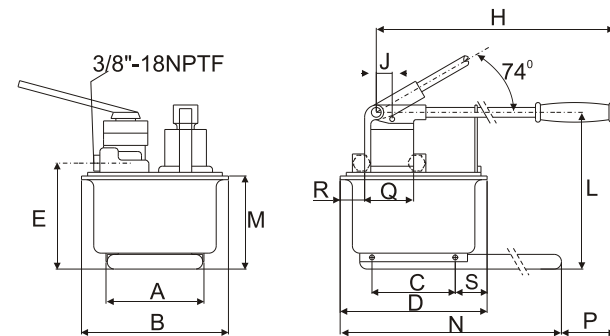
DP-20



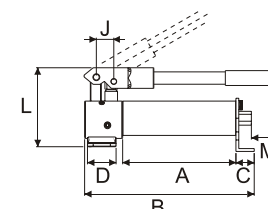
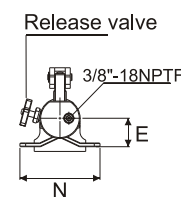
DP-464

DP-46 Steel, Two-Speed Hand Pump

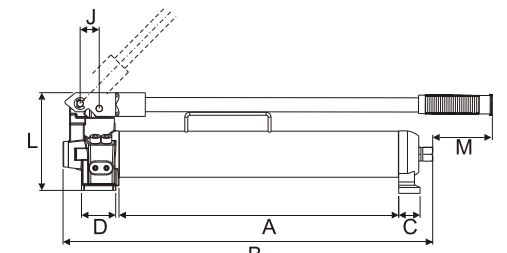
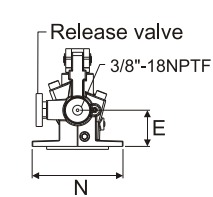
- Internal pressure relief valve for overload protection.
- 4-Way valving on the DP-464 for operation of double-acting cylinder.
- Large oil capacity to power a wide range of cylinders or tools.



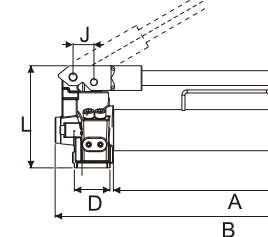
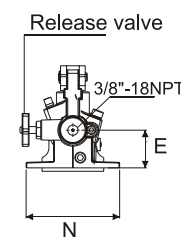
DP-462 / DP-464



DP-4

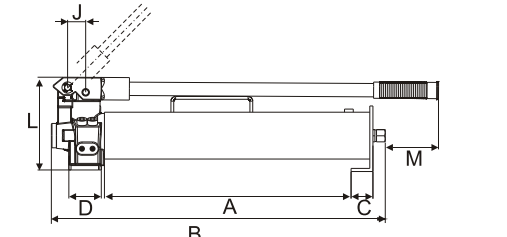
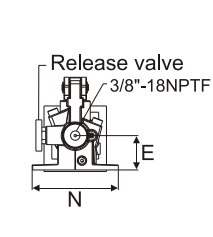


DP-12



DP-9

DP-20



DP-30

Model Number	Pump Type	Usable Oil Capacity (cm ³)	Pressure Rating		Oil Displacement per Stroke (cm ³)		Max. Handle Effort (kg)	Piston Stroke (mm)	Dimensions(mm)		
			1 st stage	2 nd stage	1 st stage	2 nd stage			A	B	C
			(bar)		(cm ³)						
DP-392	Two-Speed	901	13	700	11.26	2.47	42.2	25.4	344	533	36
DP-462		7423	14	700	126.20	4.75	50.0	38.1	210	308	163
DP-464		7423	14	700	126.20	4.75	50.0	38.1	210	308	163

Model Number	Dimensions(mm)											Weight (kg)
	D	E	H	J	L	M	N	P	Q	R	S	
DP-392	99	33	522	30	177	16	120	—	—	—	—	4.1
DP-462	320	195	671	25	270	175	650	92	—	—	80	27.7
DP-464	320	195	671	25	270	175	650	92	89	68	80	27.7

Model Number	Pump Type	Usable Oil Capacity (cm ³)	Pressure Rating		Oil Displacement per Stroke (cm ³)		Piston Stroke (mm)	Dimensions(mm)								Weight (include oil) (kg)	
			1 st stage	2 nd stage	1 st stage	2 nd stage		A	B	C	D	E	J	L	M		N
			(bar)		(cm ³)												
DP-4	S/S	400	—	700	—	1.25	22	200	296	32.0	50	50	29	142	45	140	5.0
DP-9	Two-speed	900	14	700	12.5	2.8	21	410	510	32.5	45	55	29	150	60	136	7.5
DP-12		1200	14	700	12.5	2.8	19	425	536	32.5	48	55	29	150	65	137	9.0
DP-20		2200	14	700	14.5	2.8	21	425	536	32.5	45	55	29	150	60	136	10.5
DP-30		3000	14	700	14.5	2.8	21	425	562	45.0	48	55	29	150	65	137	13.6