

Datasheet

Super Fast Acting Ceramic Tube Fuse, 1-30A, 6x30mm

RS Pro



Specifications:

Materials

Tube (Body): Non-Transparent ceramic tube fuse. No breaking or deformation is allowed.

Two brass end caps: Made of brass of good conductivity.

Coating of brass caps: Plating the surface with nickel. If the indication is added with "S", it needs to be plated with silver.

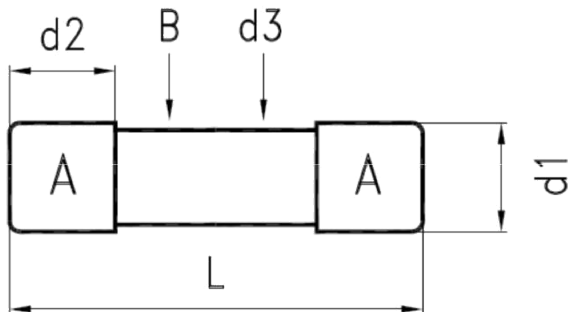
Interrupting Ratings

1A~20A: 200 amperes at 500V AC/DC

20.1A~30A: 100 amperes at 500V AC/DC

Operating Temperature

-55°C to +125°C

Drawing (mm):


NO.	Part Name	Volume
A	Brass Cap - Nickel Plating	2
B	Ceramic Tube - Non-Transparent Ceramic Tube	1
d1	Dia. of Cap - 6.35±0.1mm	
d2	Height of Cap - 6.45±0.1mm	
d3	Dia. of Ceramic - 5.72±0.2mm	
L	Body of Fuse - 31.75±0.75mm	

Electrical Characteristic:

Rating	100% Rating		135% Rating		250% Rating	
	Min.	Max.	Min.	Max.	Min.	Max.
1A~15A	4 Hrs			120 sec		0.2 sec
15.1A~30A	4 Hrs			300 sec		3 sec

Mark Approvals	Nominal Resistance Cold Ohms	Nominal Melting I ² t A ² Sec
1 A	0.1679~0.3119	1.1952
1.6 A	0.0805~0.1494	2.3454
2 A	0.0588~0.1092	3.8160
5 A	0.0352~0.0654	12.667
6.3 A	0.0236~0.0438	31.910
10 A	0.0137~0.0254	98.280
12 A	0.0093~0.0173	164.20
15 A	0.0075~0.0140	253.53
20 A	0.0047~0.0087	464.40
25 A	0.0029~0.0054	1512.0
30 A	0.0025~0.0047	1986.1



ENGLISH

Reference:

Stock No	Rating amperes
1748012	1.25A 500V
1748013	2A 500V
1748014	3.15A 500V
1748015	6.3A 500V
1748016	10A 500V
1748017	12A 500V
1748018	15A 500V
1748019	20A 500V
1748020	25A 500V
1748021	30A 500V