



ESS 10 (-Li)
 ESS 12 (-Li)
 ESS 15 (-Li)

Electric Stacker 1.0/1.2/1.5T

■ Li-ion Battery Option



Electric Stacker

Electric Stacker 1.0/1.2/1.5T

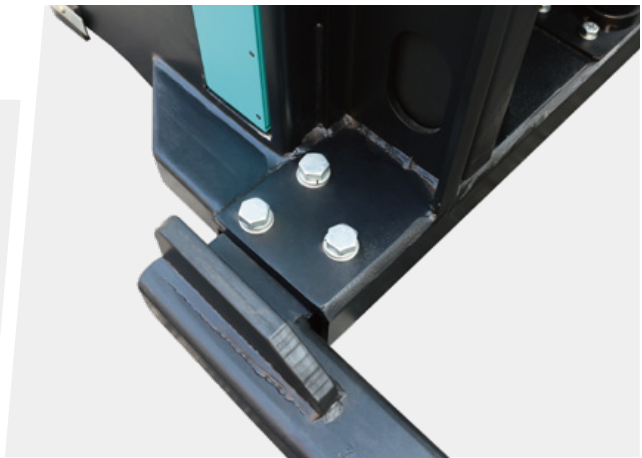
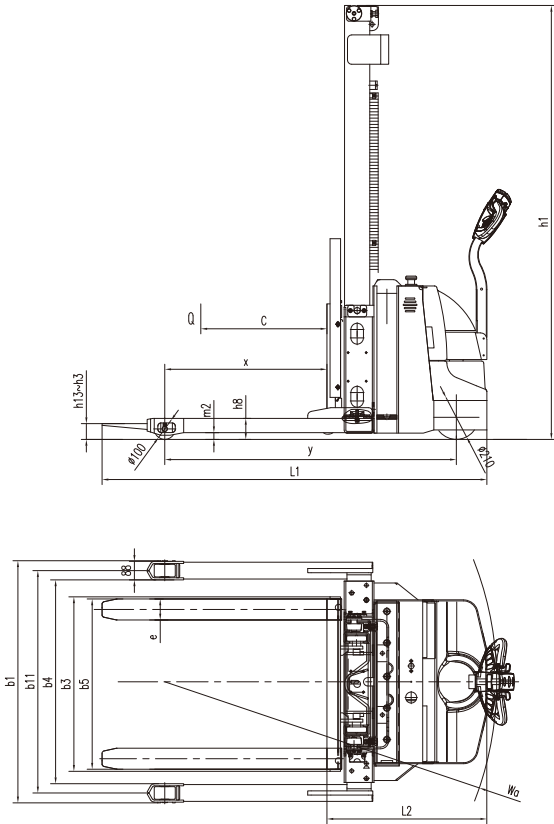
ESS10(-Li)/ESS12(-Li)/ESS15(-Li)

Distinguishing Mark								
1.1	Manufacturer		REDDOT					
1.2	Model		ESS10	ESS12	ESS15	ESS10-Li	ESS12-Li	ESS15-Li
1.3	Driving type		electric	electric	electric	electric	electric	electric
1.4	Operating type		pedestrian	pedestrian	pedestrian	pedestrian	pedestrian	pedestrian
1.5	Rated capacity	q kg	1000	1200	1500	1000	1200	1500
1.6	Load center	c mm	600	600	600	600	600	600
1.8	Load distance	x mm	770	770	770	770	770	770
1.9	Wheelbase	y mm	1230	1230	1230	1388	1388	1388
Tyres,Chassis								
3.1	Wheel Material		PU	PU	PU	PU	PU	PU
3.2	Tyre size, Driving wheels (diameter×width)		Ø210x75	Ø210x75	Ø210x75	Ø210x75	Ø210x75	Ø210x75
3.3	Tyre size, Loading wheels (diameter×width)		Ø100x60	Ø100x60	Ø100x60	Ø100x60	Ø100x60	Ø100x60
3.5	Number of wheels, driving, caster/loading		1, 0/2	1, 0/2	1, 0/2	1, 0/2	1, 0/2	1, 0/2
3.6	Track width, front, driving side	b10 mm	--	--	--	--	--	--
3.7	Track width, rear, loading side	b11 mm	1060/1200/1340	1060/1200/1340	1060/1200/1340	1060/1200/1340	1060/1200/1340	1060/1200/1340
Dimensions								
4.2	Height, mast lowered ③	h1 mm	2065	2015	2015	2065	2015	2015
4.3	Free lift ④	h2 mm	--	--	--	--	--	--
4.4	Lift height ⑤	h3 mm	3000	3000	3000	3000	3000	3000
4.5	Height, mast extended	h4 mm	3880	3880	3880	3880	3880	3880
4.15	Lowered height	h13 mm	70	70	70	70	70	70
4.19	Overall Length	l1 mm	1720	1740	1740	1831	1831	1841
4.20	Length to face of forks	l2 mm	650	670	670	761	761	771
4.21	Overall width	b1 mm	1150/1290/1430	1150/1290/1430	1150/1290/1430	1150/1290/1430	1150/1290/1430	1150/1290/1430
4.22	Fork dimensions	s/e/l mm	30/100/1070	30/100/1070	30/100/1070	30/100/1070	30/100/1070	30/100/1070
4.24	Fork carriage width	b3 mm	830	830	830	830	830	830
4.25	Outside width of the forks	b5 mm	200-800	200-800	200-800	200-800	200-800	200-800
4.32	Ground clearance,center of wheelbase	m2 mm	30	30	30	30	30	30
4.34	Aisle width for pallets 800*1200 lengthways	Ast mm	2200	2220	2220	2129	2129	2139
4.34	Aisle width for pallets 1000*1200 crossways	Ast mm	2275	2295	2295	2200	2200	2210
4.35	Turning radius	Wa mm	1425	1445	1445	1546	1546	1556
Performance								
5.1	Travel speed, laden/unladen	km/h	4.5/4.7	4.5/4.7	4.5/4.7	4.6/4.7	4.6/4.7	4.6/4.7
5.2	Lifting speed, laden/unladen	mm/s	115/160	115/160	80/110	115/160	115/160	75/110
5.3	Lowering speed, laden/unladen	mm/s	170/130	170/130	145/80	170/130	170/130	145/100
5.8	Max. gradeability, laden/unladen	%	5/7	5/7	5/7	5/7	5/7	5/7
5.10	Service brake type		Electromagnetic	Electromagnetic	Electromagnetic	Electromagnetic	Electromagnetic	Electromagnetic
Electric-engine								
6.1	Driving motor rating S2 60 min	kW	AC0.75	AC0.75	AC0.75	AC0.75	AC0.75	AC0.75
6.2	Lifting motor rating S3 7.5%	kW	DC2.2	DC2.2	DC2.2	DC2.2	DC2.2	DC2.2
6.3	Battery dimension (L×W×H)	V/Ah	(262*172*170)*2	(262*172*170)*2	(262*172*170)*2	760x90x570	760x90x570	760x90x570
6.4	Battery voltage/nominal capacity K20	mm	(24V/75Ah)*2	(24V/75Ah)*2	(24V/100Ah)*2	24V/75Ah	24V/75Ah	24V/100Ah
Addition data								
8.1	Type of drive unit		DC	DC	DC	DC	DC	DC
10.5	Steering type		Mechanical					
10.7	Sound pressure level at the driver' s ear	dB(A)	74					

1.The parameters in the table are of the standard model.For more information,please contact us.
2.The parameters are subject to change without notice.

ESS10/12/15(-Li)

Product Show



Lithium Battery Option



ESS10/12/15(-Li)

Mast Option

ESS10(-Li)/ESS12(-Li)

Lift Height h3(mm) ^⑤	Mast type	Free lift h2(mm)	Lowered Mast Height h1(mm) ^③	Extended Mast Height h4(mm) ^④
ESS10(-Li)/ESS12(-Li)				
1600	1W	--	2145	2480
1900		--	2445	2780
2500		--	1815	3380
3000	2W	--	2065	3880
3300		--	2215	4180
3500		--	2315	4380
4000		--	2565	4880
2500	2F	1280	1765	3380
3000		1530	2015	3880
3300		1680	2165	4180
3500		1780	2265	4380

ESS15(Li)

Lift Height h3(mm) ^⑤	Mast type	Free lift h2(mm)	Lowered Mast Height h1(mm) ^③	Extended Mast Height h4(mm) ^④
ESS15(-Li)				
1600	1W	--	2105	2480
1900		--	2405	2780
2500		--	1765	3380
3000	2W	--	2015	3880
3300		--	2165	4180
3500		--	2265	4380
4000		--	2515	4880
2500	2F	1280	1765	3380
3000		1530	2015	3880
3300		1680	2165	4180
3500		1780	2265	4380

1.The parameters in the table are of the standard model.For more information,please contact us.
2.The parameters are subject to change without notice.

