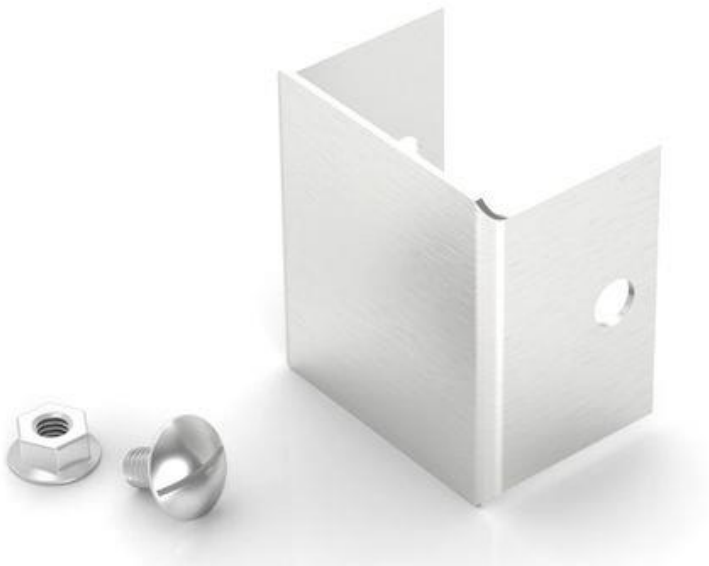




ENGLISH

Datasheet

RS Pro UL Approved 304 Stainless Steel 75 x 75mm Cable Trunking End Cap



Product Details

Stainless Steel

Cable management return edge trunking and fittings manufactured from 304 stainless steel with a brushed finish. Ideal for applications in the food, brewing, dairy, pharmaceutical and chemical industries. Their aesthetically pleasing finishes also lend towards architectural applications.



Specifications



Stop End

W (mm)	H (mm)	Model No.
75	75	AL-S18 75-75
100	100	AL-S18 100-100
150	100	AL-S18 150-100
150	150	AL-S18 150-150

Trunking Accessory Type	Stop End
Material	304 Stainless Steel
Standards Met	UL