

# Datasheet

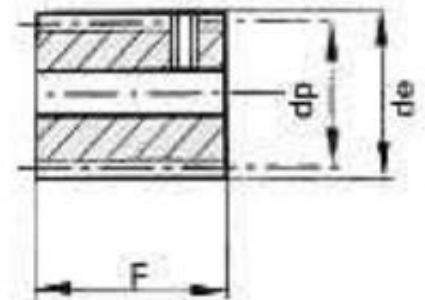
## Metric Worms 0.8 Mod - 1 Mod



### Specifications:

- Material: En8 or equivalent
- Single (1R) & Double (2R) Start
- Right Hand
- 20 degree p.a.
- Bore tolerance H7

TYPE D



All dimensions in mm  
 Standard tolerances, unless otherwise stated + - 0.25mm  
 All worms are supplied with black oxide finish  
 They are supplied with a M4 G/S fitted (5mm from one end)  
 1R=Single Start  
 2R=Double Start

RS Article Number	Code	Pitch Module	dp	de	Bore	F	Type
5218559	SWB08/1R	0.8	14	15.6	6	30	D
5216812	SWB08/2R	0.8	14	15.6	6	30	D
5216890	SWB10/1R	1	16	18	6	32	D
5216907	SWB10/2R	1	16	18	6	32	D