

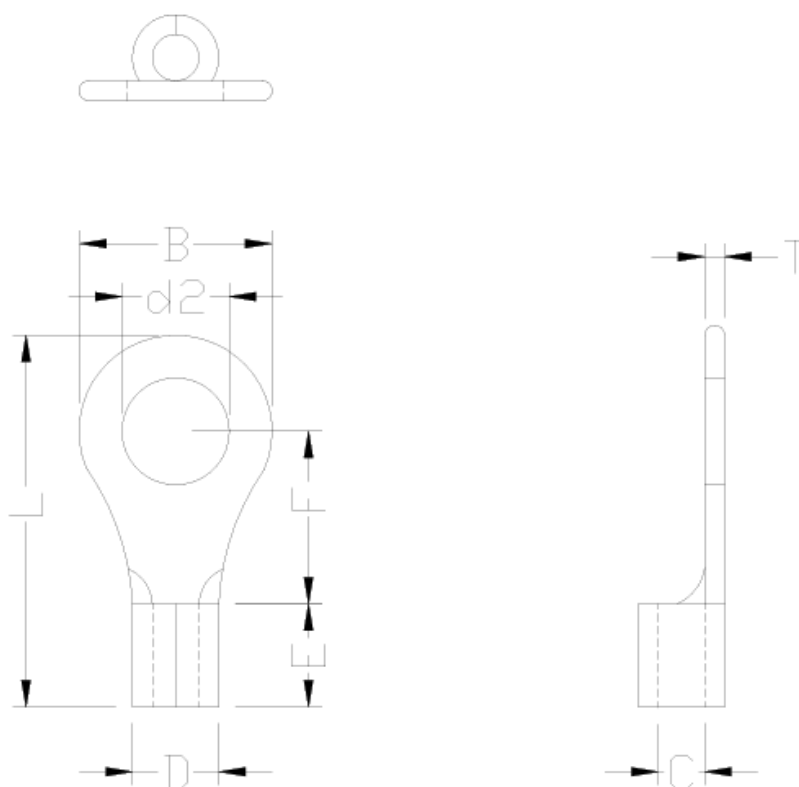


ENGLISH

Product Datasheet

M5 uninsulated eyelet terminal

1-2.5 sq.mm



mm			
B:9.5±0.3	L:16.0±1.0	F:7.0±0.3	E:5.5±0.3
D:2.3±0.3	C:1.8 ^{+0.3} _{-0.2}	T:0.8±0.03	d2:5.3±0.15

PART NO: (2082616)

RAW-MATERIAL:COPPER

INSULATION:

STUD SIZE: # 10

WIRE RANGE: 16-14AWG

ELECTRIC CURRENT: 600 VOLTS MAX

PACKING QTY:1000PCS

PLATING: MATT-TIN